

RQ04-011
FORD
APRIL 26, 2005
REQUEST 8
PART 1 OF 6
BOOKS 35 OF 43

PERFORM RECALL ##X## INSPECTION ONLY
INSPECT SEAT BELT PER RECALL 01S21 OK
INSPECTION OK PER RECALL 01S21
CK BUCKLES OK
CHECK SEAT BELT BUCKLES AS PER RECALL CHECK OK
INSPECT SEAT BUCKLES, OK
INSPECT NO NEED FOR REPAIR
1 PERFORMED RECALL PASS
RECALL 01S21 A INSPECTED SEATBELTS PASSED

INSPECT SEAT BELT BUCKELS,ALL OKAY.
18768 PERFORMED RECALL 01S21 ALL BELTS PASSED
CHECK SEAT BELT PER RECALL OK AT THIS TIME

INSPECTED SEAT BELTS FOR RETENSION AS PER RECALL 01S21
NO NEED FOR REPLACEMENT
PERFORM RECALL 01S21
RECALL PERFORM RECALL
13 PERFORM RECALL INSPECTION 01S21 JH

PERFORM RECALL
PERFORM RECALL INSPECT BUCKLES OK
TESTED BOTH FRONT SEAT BELTS PASSED TEST

W INSPECT PER RECALL
01S21 RECALL COMPLETE INSPECTED SEAT BELT BUCKLES
AND ALL IS NORMAL AT THIS TIME
TEST SEAT BELT BUCKLES BOTH OK AT THIS TIME PER 01S21
RECALL 01S21 INSPECTED AS PER SERVICE CAMPAGIN.

TESTED SEAT BELT BUCKLES, ALL OKAY.

01S21 RECALL INSPECTION

5771 COMPLETED RECALL, SEAT BELT BUCKLE OK.

PERFORMED THE RECALL

PERFORM RECALL 01S21 SEATBELT

INSPECTED FRONT SEAT BELT BUCKLE AS PER RECALL 01S21.
NO REPAIRS NEEDED.

1 INSPECTED SEAT BELTS RECALL 01S21 OK 1

PERFORM AS PER RECALL

01S21 01S21

01S21 01S21 SEAT BELT

COMPLETED FORD RECALL

18801 RECALL 01S21 RECALL 01S21 PERFORMED BOTH SEAT
BELT BUCKLES OK

INSPECT SEAT BELTS COMPLETE, BOTH PASS,

INSPECT SEAT BELTS OK

INSPECT SEAT BELT BUCKLES OK

XXXX INSPECTED FOR RECALL

REPAIR PER RECALL

RECALL 01S21

1 1 INSP SEAT BELTS CK OK

PERFORM RECALL 01S21 MILE 10692 INSPECTION SEAT
BELTS,PASS INSPECTION

1 TESTED BUCKLES PER PROGRAM BOTH PASSED THE TEST
INSPECTED PER RECALL

14044 RECALL 01S21 CHECK BOTH FRONT SEAT BELTS OK

16010 RECALL WARR PERFORMED RECALL 01S21 INSPECTED
ALL OK

DO RECALL AS PER SPECS

01S21 INSPECTION COMPLETED

1 PERFORM RECALL 01S21 SEAT BELT BUCKLE CHECKS OK

7747 01S21C .7 .1ADMIN INSTALL SEAT BELT PER RECALL

PERFORMED RECALL

REPLACED DRIVERS SIDE SEAT BELT BELT LOCK
RECALL COMPLETED

2 01S21C 0.7 3458 INSPECT & REPLACE 1 BUCKLE
PERFORMED 01S21 RECALL

REMOVED PASSANGER SIDE SEAT REPLACED BELT LATCH PER
RECALL

PERFORMED RECALL

INSPECT FRONT SEAT BELT BUCKLES BOTH PASSED
INSPECT, PASS

INSPECT. NO REPLACEMENT REQUIRED.

01S21,INSPECT SEATBELTS,OK

INSPECTED SEAT BELT BUCKLES ONLY NO REPLACEMENTS
NECESSARY

6516 RECALL WARR COMPLETED PASSED INSPECTION.

1 INSPECT ONLY (NO BUCKLE REPLACEMENT REQUIRED)

LABOR OP:01S21A LABOR HRS:0.3 ADMIN:0.1

1 INSPECT SEAT BELT BUCKLES PER RECALL 01S21

1 INSPECTION OK, NO SEAT BUCKLE REPLACEMENT NEEDED.

PERFORMED SAFETY RECALL

INSPECTED SEAT BELT BUCKLES AS PER RECALL BOTH
PASSED

POSSIBLE DEFECT IN ASSEMBLY INSPECTED OUTBOARD
DRIVER AND PASSENGER FRONT SEAT BELT ASSEMBLIES,NO
REPLACEMENT IS REQUIRED.

REPAIR PER RECALL 01S21 SEAT BELT BUCKLE RETENTION
TEST FRONT SEAT BELT BUCKLE PER RECALL BOTH PASSED
TEST NO REPAIRS REQUIRED 01S21A .3

PERFORMED SAFETY RECALL

MO 9669 TESTED SEAT BELT BUCKLES WITH REQUIRED
TOOL.PASSED.NO ACTION REQUIRED.

INSPECT BUCKLE O.K.

INSPECTED ALL SEAT BELTS ALL OKAY

11776 TESTED SEAT BELTS NO NEED FOR REPLACEMENT AT
THIS TIME

PERFORM INSPECTION PER 01S21 OK

CHECKED THE SEATBELT BUCKLE RETENTION & FOUND
REPLACEMENT WAS NOT REQUIRED AS PER FORD

01S21 RECALL PERFORMED 01S21 RECALL PERFORMED

DID RECALL INSPECTION PER FORD

PERFORMED SAFETY RECALL

01S21 01S21

PERFORMED 01S21 AS PER FORD MOTOR CO.

PERFORM RECALL

PERFORMED RECALL 01S21 INSPECTED SEAT BELT OK

01S21 INSPECTION COMPLETED

REPLACED PS FORNT BUCKLE

RECALL CAMP. 01S21 SEAT BELT BUCKLE

RECALL 01S21 SEAT BELT

01S21 SEAT BELT

RECALL 01S21

RECALL 01S21

RECALL 01S21.

RECALL 01S21

01S21 SEAT BELT BUCKLE

01S21

N99 SEAT BELT BUCKLE RECALL

N99 01S21 SEAT BELT INPSECTION

INSPECT SEAT BELT NO REPLACEMENT NEEDED AT THIS TIME

RECALL 01S21: 2001 CRN VIC, EXCURSION, EXPEDITION,
F150,F250 F550,RANGER,WINDSTAR,TWN CAR, NAV, GRD MARQ.
SEAT BELT BUCKLE RETENSION.

01S21 RECALL

PERFORM RECALL 01S21 SEAT BELT

01S21 SEAT BELT BUCKLE

PERFORM RECALL 01S21

RECALL 01S21

01S21 RECALL SEATBELT BUCKLES

SEAT BELT RECALL 01S21

RECALL 01S21 SEAT BELT

RECALL 01S21

RECALL 01S21 SEAT BUCKLE.

F C 01S21 SEAT BELT BUCKLE

901 USA 123008 01S21 USA

252 USA 121027 01S21 USA

949 USA 171098 01S21 USA

330 USA 147718 01S21 USA

509 USA 174522 01S21 USA

863 USA 121488 01S21 USA

301 USA 127650 01S21 USA

770 USA 121122 01S21 USA

919 USA 121027 01S21 USA

651 USA 158103 01S21 USA

317 USA 147034 01S21 USA

440 USA 147718 01S21 USA

402 USA 141283 01S21 USA

703 USA 127042 01S21 USA

828 USA 171037 01S21 USA

305 USA 124081 01S21 USA

864 USA 121288 01S21 USA

512 USA 152792 01S21 USA

410 USA 127650 01S21 USA

847 USA 141086 01S21 USA

563 USA 141701 01S21 USA

714 USA 171034 01S21 USA

512 USA 152148 01S21 USA

317 USA 147723 01S21 USA

806 USA 152251 01S21 USA

V00 FB SXX @

V00 FB SXX @

V00 FB SXX @

V00 FB SXX @

V00 FB SXX @

V00 FB SXX @

V00 FB SXX @

V00 FB SXX @

V00 FB SXX @

V00 FB SXX @

V00 FB SXX @

V00 FB SXX @

V00 FB SXX @

V00 FB SXX @

V00 FB SXX @

V00 FB SXX @

V00 FB SXX @

V00 FB SXX @

V00 FB SXX @

V00 FB SXX @

V00 FB SXX @

V00 FB SXX @

V00 FB SXX @

V00 FB SXX @

V00 FB SXX @

RECALL 01S21
CUSTOMER REQUESTS PERFORM RECALL #01S21

503 USA 174472 01S21 USA
860 USA 113212 01S21 USA

V00 FB SXX @
V00 FB SXX @

SEATBELT BUCKLE RETENTION

320 USA 158103 01S21 USA

V00 FB SXX @

RECALL 01S21 DUE
PERFORM RECALL 01S21 SEAT BELT
RECALL 01S21, SEAT BELT

* USA 171816 01S21 USA
540 USA 127077 01S21 USA
570 USA 113551 01S21 USA

V00 FB SXX @
V00 FB SXX @
V00 FB SXX @

810 USA 148515 01S21 USA

V00 FB SXX @

RECALL #01S21
RECALL 01S21
01S21 SEATBELT
SAFETY RECALL 01S21A

216 USA 147718 01S21 USA
702 USA 171170 01S21 USA
770 USA 121018 01S21 USA
* USA 171816 01S21 USA

V00 FB SXX @
V00 FB SXX @
V00 FB SXX @
V00 FB SXX @

RECALL 01S21
OWNER NOTIFICATION, RECALL 01S21, SEAT BELTS
01S21 SEAT BELT BUCKLE A99
RECALL 01S21 SEAT BELT BUCKLE RECALL
PERFORM RECALL 01S21 SEAT BELT BUCKLE

757 USA 127054 01S21 USA
970 USA 158493 01S21 USA
847 USA 141895 01S21 USA
419 USA 147718 01S21 USA
809 USA 116010 01S21 USA

V00 FB SXX @
V00 FB SXX @
V00 FB SXX @
V00 FB SXX @
V00 FB SXX @

OPEN CAMPAIGN # 01S21 SOP.
PERFORM RECALL 01S21

903 USA 153076 01S21 USA
518 USA 113551 01S21 USA

V00 FB SXX @
V00 FB SXX @

THE FRONT SEAT BELTS MAY NOT LATCH PROPERLY. INSPECT
AND TEST USING SPECIAL TOOL.

N99 RECALL 01S21 SEART BELT BUCKLE

RECALL 01S21 SEAT BELT BUCKLE

01S21 SEAT BELT

RECALL 01S21

RECALL 01S21 SEAT BELT BUCKLE RECALL

RECALL FOR SEATBELT

RECALL 01S21

CUSTOMER STATES PERFORM SAFETY RECALL 01S21 SEAT BELT
BUCKLE

RECALL 01S22

01S21 RECALL

RECALL 01S21

RECALL 01S21,SOP

RECALL 01S21 SEAT BELT BUCKLE

PERFORM RECALL 01S21

RECALL 01S21 SEAT BELT BUCKLE

01S21 SEAT BELT

RECALL 01S21 SEAT BELT BUCKEL

RECALL# 01S21

01S21 RECALL

01S21 SEATBELT BUCKLE RECALL

01S21 SEAT BELT RECALL

318 USA 123038 01S21 USA

214 USA 162792 01S21 USA

615 USA 153031 01S21 USA

941 USA 124081 01S21 USA

847 USA 141895 01S21 USA

604 USA 124770 01S21 USA

716 USA 113661 01S21 USA

806 USA 171816 01S21 USA

317 USA 147723 01S21 USA

517 USA 148516 01S21 USA

651 USA 158007 01S21 USA

864 USA 121795 01S21 USA

940 USA 162792 01S21 USA

781 USA 111025 01S21 USA

785 USA 153400 01S21 USA

330 USA 144014 01S21 USA

618 USA 148515 01S21 USA

320 USA 158103 01S21 USA

972 USA 162020 01S21 USA

760 USA 171416 01S21 USA

931 USA 123348 01S21 USA

573 USA 153339 01S21 USA

740 USA 144521 01S21 USA

V00 FB SXX @

V00 FB SXX @

V00 FB SXX @

V00 FB SXX @

V00 FB SXX @

V00 FB SXX @

V00 FB SXX @

V00 FB SXX @

V00 FB SXX @

V00 FB SXX @

V00 FB SXX @

V00 FB SXX @

V00 FB SXX @

V00 FB SXX @

V00 FB SXX @

V00 FB SXX @

V00 FB SXX @

V00 FB SXX @

V00 FB SXX @

V00 FB SXX @

V00 FB SXX @

V00 FB SXX @

V00 FB SXX @

SAFETY RECALL 01S21: CERTAIN 2001 CROWN VICTORIA AND TOWN CAR VEHICLES SEAT BELT BUCKLE RETENTION. 01S21 SEAT BELT BUCKLE RETENSION

CUSTOMER RECEIVED SAFETY RECALL 01S21.

RECALL 01S21 SEAT BELT BUCKLE
CUSTOMER REQUESTS SAFETY RECALL# 01S21, SEAT BELT BUCKLE RETENTION.

RECALL 01S21 DUE

RECALL 01S21

RECALL 01S21 SEAT BELT BUCKLE RETENSION.

REPAIR PER RECALL 01S21, FRONT SEAT BELT BUCKLE RETENTION CERTAIN 2001 FORD AND MERCURY AND LINCOLN

FORD RECALL 01S21

RECALL 01S21 SEAT BUCKLE

INSPECT ONLY NO BUCKLE REPLACEMENT
INSPECT ALL SEAT BELTS PER RECALL

RECALL 01S21 SEAT BELT BUCKLE

CERTAIN 2001 MODEL YEAR CROWN VICTORIA, EXCURSION, F150, F250 THROUGH F350, GRAND MARQUIS, NAVIGATOR, RANGER, TOWN CAR AND WINDSTAR SEAT BELT BUCKLE RETENTION

RECALL 01S21

RECALL 01S21 SEAT BELT BUCKLE

PERFORM RECALL PER FORD
FORD RECALL 01S21
RECALL 01S21

810	USA	144004	01S21	USA	V00	FB	SXX	@
410	USA	127030	01S21	USA	V00	FB	SXX	@
541	USA	174021	01S21	USA	V00	FB	SXX	@
512	USA	152792	01S21	USA	V00	FB	SXX	@
881	USA	171439	01S21	USA	V00	FB	SXX	@
*	USA	148713	01S21	USA	V00	FB	SXX	@
409	USA	152131	01S21	USA	V00	FB	SXX	@
912	USA	124462	01S21	USA	V00	FB	SXX	@
414	USA	141380	01S21	USA	V00	FB	SXX	@
*	USA	124804	01S21	USA	V00	FB	SXX	@
214	USA	152020	01S21	USA	V00	FB	SXX	@
516	USA	113083	01S21	USA	V00	FB	SXX	@
610	USA	144004	01S21	USA	V00	FB	SXX	@
*	USA	147723	01S21	USA	V00	FB	SXX	@
734	USA	148525	01S21	USA	V00	FB	SXX	@
925	USA	172022	01S21	USA	V00	FB	SXX	@
360	USA	174522	01S21	USA	V00	FB	SXX	@
337	USA	123271	01S21	USA	V00	FB	SXX	@
860	USA	111405	01S21	USA	V00	FB	SXX	@
*	USA	124804	01S21	USA	V00	FB	SXX	@
702	USA	171170	01S21	USA	V00	FB	SXX	@

PERFORM RECALL 01S21

732 USA 113584 01S21 USA

V00 FB SXX @

PERFORM RECALL 01S21 SEAT BELTS

305 USA 124003 01S21 USA

V00 FB SXX @

ADD*RECALL 01S21 SEAT BELT BUCKLE

214 USA 124770 01S21 USA

V00 FB SXX @

CUST STATES OPEN CAMPAIGN 01S21 SEAT BELT BUCKLE

228 USA 123071 01S21 USA

V00 FB SXX @

RECALL 01S21

805 USA 171816 01S21 USA

V00 FB SXX @

FIELD SERVICE ACTION

302 USA 116023 01S21 USA

V00 FB SXX @

2FAFP74WX1X	C/FB C/F C/FC C/AI C/B C/VN C/DU AW	12/22/2000	7/14/2001
2FAFP71WX1X	C/FB C/F C/FC C/AB C/B C/VN C/DU AW	2/18/2001	3/2/2001
2FAFP74W21X	C/FB C/F C/FC C/AI C/B C/VN C/DU AW	10/16/2000	11/2/2000
2FAFP71W01X	C/FB C/F C/FC C/AB C/B C/VN C/DU AW	4/26/2001	10/2/2001
2FAFP71W11X	C/FB C/F C/FC C/AB C/B C/VN C/DU AW	5/2/2001	6/4/2001
2FAFP71WX1X	C/FB C/F C/FC C/AB C/B C/VN C/DU AW	11/27/2000	3/8/2001
2FAFP71W81X	C/FB C/F C/FC C/AB C/B C/VN C/DU AW	2/5/2001	2/22/2001
2FAFP71W41X	C/FB C/F C/FC C/AB C/B C/VN C/DU AW	5/10/2001	1/28/2002
2FAFP71WX1X	C/FB C/F C/FC C/AB C/B C/VN C/DU AW	2/22/2001	3/12/2001
2FAFP71W01X	C/FB C/F C/FC C/AB C/B C/VN C/DU AW	4/9/2001	4/20/2001
2FAFP71W71X	C/FB C/F C/FC C/AB C/B C/VN C/DU AW	1/12/2001	1/29/2001
2FAFP71W51X	C/FB C/F C/FC C/AB C/B C/VN C/DU AW	3/6/2001	3/21/2001
2FAFP74W91X	C/FB C/F C/FC C/AI C/B C/VN C/D6 AW	3/13/2001	3/28/2001
2FAFP74W61X	C/FB C/F C/FC C/AI C/B C/VN C/DU AW	5/2/2001	6/19/2001
2FAFP74W11X	C/FB C/F C/FC C/AI C/B C/VN C/DU AW	8/14/2000	11/7/2000
2FAFP71W31X	C/FB C/F C/FC C/AB C/B C/VN C/DU AW	4/8/2001	4/23/2001
2FAFP73WX1X	C/FB C/F C/FC C/AB C/B C/VN C/D6 AW	12/20/2000	8/8/2001
2FAFP71W71X	C/FB C/F C/FC C/AB C/B C/VN C/DU AW	2/7/2001	6/30/2001
2FAFP71W31X	C/FB C/F C/FC C/AB C/B C/VN C/DU AW	4/30/2001	5/23/2001
2FAFP73W41X	C/FB C/F C/FC C/AB C/B C/VN C/D6 AW	10/16/2000	1/5/2001
2FAFP71W61X	C/FB C/F C/FC C/AB C/B C/VN C/DU AW	5/8/2001	7/2/2001
2FAFP73W41X	C/FB C/F C/FC C/AB C/B C/VN C/D6 AW	8/17/2000	10/14/2000
2FAFP74W11X	C/FB C/F C/FC C/AI C/B C/VN C/DU AW	8/14/2000	12/16/2000
2FAFP71W91X	C/FB C/F C/FC C/AB C/B C/VN C/DU AW	3/14/2001	3/22/2001
2FAFP71W31X	C/FB C/F C/FC C/AB C/B C/VN C/DU AW	2/21/2001	7/5/2001

2FAFP74W71X	[REDACTED]	C/FB C/F C/FC C/AI C/B CMN C/DU AW 3/8/2001	3/22/2001
2FAFP71W91X	[REDACTED]	C/FB C/F C/FC C/AB C/B CMN C/DU AW 1/31/2001	3/13/2001
2FAFP71W21X	[REDACTED]	C/FB C/F C/FC C/AB C/B CMN C/DU AW 4/3/2001	4/16/2001
2FAFP74W01X	[REDACTED]	C/FB C/F C/FC C/AI C/B CMN C/DU AW 1/10/2001	1/25/2001
2FAFP71W81X	[REDACTED]	C/FB C/F C/FC C/AB C/B CMN C/DU AW 2/5/2001	2/23/2001
2FAFP71W11X	[REDACTED]	C/FB C/F C/FC C/AB C/B CMN C/DU AW 5/29/2001	6/28/2001
2FAFP71W11X	[REDACTED]	C/FB C/F C/FC C/AB C/B CMN C/DU AW 3/27/2001	4/10/2001
2FAFP71W81X	[REDACTED]	C/FB C/F C/FC C/AB C/B CMN C/DU AW 3/9/2001	3/21/2001
2FAFP71W21X	[REDACTED]	C/FB C/F C/FC C/AB C/B CMN C/DU AW 4/3/2001	7/31/2001
2FAFP74W41X	[REDACTED]	C/FB C/F C/FC C/AI C/B CMN C/DU AW 12/20/2000	4/20/2001
2FAFP74W31X	[REDACTED]	C/FB C/F C/FC C/AI C/B CMN C/DU AW 1/10/2001	1/31/2001
2FAFP71W51X	[REDACTED]	C/FB C/F C/FC C/AB C/B CMN C/DU AW 11/28/2000	1/22/2001
2FAFP71W71X	[REDACTED]	C/FB C/F C/FC C/AB C/B CMN C/DU AW 2/27/2001	3/13/2001
2FAFP71W01X	[REDACTED]	C/FB C/F C/FC C/AB C/B CMN C/DU AW 2/12/2001	3/15/2001
2FAFP71W91X	[REDACTED]	C/FB C/F C/FC C/AB C/B CMN C/DU AW 3/27/2001	4/23/2001
2FAFP71W81X	[REDACTED]	C/FB C/F C/FC C/AB C/B CMN C/DU AW 5/17/2001	10/19/2001
2FAFP73W21X	[REDACTED]	C/FB C/F C/FC C/AB C/B CMN C/D6 AW 5/7/2001	5/30/2001
2FAFP71W21X	[REDACTED]	C/FB C/F C/FC C/AB C/B CMN C/DU AW 5/1/2001	9/14/2001

2FAFP71W81X	C/FB C/F C/FC C/IAB C/B C/VN C/DU AW	3/29/2001	4/12/2001
2FAFP71W81X	C/FB C/F C/FC C/IAB C/B C/VN C/DU AW	2/22/2001	4/3/2001
2FAFP73W51X	C/FB C/F C/FC C/IAB C/B C/VN C/D8 AW	12/13/2000	7/10/2001
2FAFP71W81X	C/FB C/F C/FC C/IAB C/B C/VN C/DU AW	1/11/2001	1/29/2001
2FAFP71WX1X	C/FB C/F C/FC C/IAB C/B C/VN C/DU AW	4/9/2001	5/3/2001
2FAFP74W31X	C/FB C/F C/FC C/IAI C/B C/VN C/DU AW	2/14/2001	3/2/2001
2FAFP71W81X	C/FB C/F C/FC C/IAB C/B C/VN C/DU AW	4/18/2001	5/14/2001
2FAFP74W21X	C/FB C/F C/FC C/IAI C/B C/VN C/DU AW	1/12/2001	1/31/2001
2FAFP71W11X	C/FB C/F C/FC C/IAB C/B C/VN C/DU AW	10/27/2000	11/15/2000
2FAFP71W31X	C/FB C/F C/FC C/IAB C/B C/VN C/DU AW	4/11/2001	4/21/2001
2FAFP73W31X	C/FB C/F C/FC C/IAB C/B C/VN C/D8 AW	5/24/2001	10/5/2001
2FAFP74W01X	C/FB C/F C/FC C/IAI C/B C/VN C/DU AW	4/24/2001	6/22/2001
2FAFP71W31X	C/FB C/F C/FC C/IAB C/B C/VN C/DU AW	1/12/2001	2/12/2001
2FAFP73W21X	C/FB C/F C/FC C/IAB C/B C/VN C/D8 AW	5/25/2001	7/20/2001
2FAFP71WX1X	C/FB C/F C/FC C/IAB C/B C/VN C/DU AW	3/30/2001	4/20/2001
2FAFP71W81X	C/FB C/F C/FC C/IAB C/B C/VN C/DU AW	3/6/2001	5/9/2001
2FAFP71W81X	C/FB C/F C/FC C/IAB C/B C/VN C/DU AW	4/10/2001	4/20/2001
2FAFP71W31X	C/FB C/F C/FC C/IAB C/B C/VN C/DU AW	4/20/2001	6/4/2001
2FAFP71W01X	C/FB C/F C/FC C/IAB C/B C/VN C/DU AW	1/31/2001	3/7/2001
2FAFP74W71X	C/FB C/F C/FC C/IAI C/B C/VN C/DU AW	10/10/2000	2/26/2001
2FAFP74W61X	C/FB C/F C/FC C/IAI C/B C/VN C/DU AW	5/16/2001	1/29/2002
2FAFP74W61X	C/FB C/F C/FC C/IAI C/B C/VN C/DU AW	3/6/2001	3/22/2001
2FAFP73W21X	C/FB C/F C/FC C/IAB C/B C/VN C/D8 AW	11/13/2000	12/28/2000

2FAFP71W31X	C/FB C/F C/FC C/AB C/B C/VN C/DU AW	4/3/2001	4/17/2001
2FAFP74W11X	C/FB C/F C/FC C/AI C/B C/VN C/DU AW	11/2/2000	4/17/2001
2FAFP71W61X	C/FB C/F C/FC C/AB C/B C/VN C/DU AW	4/2/2001	4/19/2001
2FAFP71W01X	C/FB C/F C/FC C/AB C/B C/VN C/DU AW	5/3/2001	11/9/2001
2FAFP71W91X	C/FB C/F C/FC C/AB C/B C/VN C/DU AW	1/15/2001	4/18/2001
2FAFP74W81X	C/FB C/F C/FC C/AI C/B C/VN C/DU AW	1/31/2001	2/15/2001
2FAFP73W51X	C/FB C/F C/FC C/AB C/B C/VN C/D6 AW	3/28/2001	10/30/2001
2FAFP73W71X	C/FB C/F C/FC C/AB C/B C/VN C/D6 AW	4/5/2001	5/15/2001
2FAFP71W91X	C/FB C/F C/FC C/AB C/B C/VN C/DU AW	5/17/2001	6/4/2001
2FAFP74W31X	C/FB C/F C/FC C/AI C/B C/VN C/DU AW	1/31/2001	2/15/2001
2FAFP71W51X	C/FB C/F C/FC C/AB C/B C/VN C/DU AW	4/9/2001	5/15/2001
2FAFP74W21X	C/FB C/F C/FC C/AI C/B C/VN C/DU AW	4/9/2001	5/1/2001
2FAFP71W11X	C/FB C/F C/FC C/AB C/B C/VN C/DU AW	2/5/2001	3/27/2001
2FAFP71W51X	C/FB C/F C/FC C/AB C/B C/VN C/DU AW	3/14/2001	3/22/2001
2FAFP71W81X	C/FB C/F C/FC C/AB C/B C/VN C/DU AW	4/12/2001	4/18/2001
2FAFP74W41X	C/FB C/F C/FC C/AI C/B C/VN C/DU AW	12/13/2000	7/17/2001
2FAFP71W91X	C/FB C/F C/FC C/AB C/B C/VN C/DU AW	3/5/2001	3/29/2001
2FAFP73W41X	C/FB C/F C/FC C/AB C/B C/VN C/D6 AW	4/20/2001	5/3/2001
2FAFP74W11X	C/FB C/F C/FC C/AI C/B C/VN C/DU AW	8/18/2000	1/26/2001
2FAFP74W31X	C/FB C/F C/FC C/AI C/B C/VN C/DU AW	1/31/2001	2/15/2001
2FAFP71W01X	C/FB C/F C/FC C/AB C/B C/VN C/DU AW	4/3/2001	8/23/2001

2FAFP74W01X	[REDACTED]	C/FB	C/F	C/FC	C/AI	C/B	C/VN	C/DU	AW	4/25/2001	7/13/2001
2FAFP74W71X	[REDACTED]	C/FB	C/F	C/FC	C/AI	C/B	C/VN	C/DU	AW	8/24/2000	2/15/2002
2FAFP74W81X	[REDACTED]	C/FB	C/F	C/FC	C/AI	C/B	C/VN	C/D6	AW	3/12/2001	3/27/2001
2FAFP71W61X	[REDACTED]	C/FB	C/F	C/FC	C/AB	C/B	C/VN	C/DU	AW	12/21/2000	1/10/2001
2FAFP74W21X	[REDACTED]	C/FB	C/F	C/FC	C/AI	C/B	C/VN	C/DU	AW	1/12/2001	1/31/2001
2FAFP74W21X	[REDACTED]	C/FB	C/F	C/FC	C/AI	C/B	C/VN	C/DU	AW	4/3/2001	5/25/2001

DOBBS FORD AT WOLFCHASE	7365151	3825555	* * *	3	2001	11	AAC	S26	1	4/2/2002	9	7836601	8421
BILL CLOUGH FORD INC	2532351	7944178	* * *	49	2001	394	AAC	S28	42	4/8/2002	14	8016584	22570
CAPISTRANO FORD	20294002	2407000	* * *	18	2001	112	AAC	S40	42	10/24/2001	12	4768228	8807
COLUMBIANA FORD-MERCURY	017318C	4823831	* * *	124	2001	768	AAD	S25	41	5/10/2002	8	8555743	17187
DISCOVERY FORD LINCOLN MERCURY	8131601	7654551	* * *	115	2001	721	AAB	S26	42	4/18/2002	11	9059811	16235
OKEECHOBEE MOTOR COMPANY	48907402	7832121	* * *	51	2001	400	*	S40	89	9/19/2001	7	3888646	4852
KOONS COLLEGE PARK FORD	1435651	4745100	* * *	85	2001	553	AAB	S26	89	3/6/2002	13	7281793	13524
JACKY JONES LINCOLN-MERCURY	4458101	5368875	* * *	93	2001	809	AAD	S26	89	6/23/2002	4	8805218	8004
CAPITAL FORD INC	2901752	7904800	* * *	50	2001	395	AAD	S26	42	4/30/2002	14	8582651	1912
TOUSLEY FORD, INC.	416282A	4847231	* * *	126	2001	780	AAD	S40	42	1/7/2002	9	6155422	19532
DON HINDS FORD INC	147200A	8499000	* * *	78	2001	518	AAD	S40	41	1/28/2002	13	6576451	20802
LIBERTY FORD SOLON, INC.	040445A	2481550	* * *	89	2001	587	AAD	S40	42	10/1/2001	7	4071397	6638
JOHN MARKEL, INC.	249702A	3939700	* * *	4	2001	15	AAC	S26	42	4/4/2002	13	7816280	10541
TED BRITT FORD SALES, INC.	29218001	5918484	* * *	7	2001	47	AAC	S25	42	4/2/2002	10	7803021	4715
PASADENA FORD, INC.	2957251	9933673	* * *	20	2001	128	AAC	S40	42	1/14/2002	15	8370545	10344
FT LAUDERDALE L-M INC	228497A	7792000	* * *	100	2001	646	AAC	S40	42	9/17/2001	5	3582409	2439
EDWARDS AUTO SALES CO INC	3488802	6383631	* * *	25	2001	144	AAC	S26	42	3/28/2002	8	7622268	3533
H. A. WILSON MOTOR COMPANY	3339701	3653232	* * *	77	2001	516	AAD	S26	7	2/28/2002	9	7586963	2801
PITTSVILLE MOTORS INC	054139B	8358338	* * *	96	2001	638	AAD	S25	89	8/12/2002	13	9189740	32050
GOLF MILL FORD, INC.	187675A	4709800	* * *	27	2001	184	AAE	S26	42	4/18/2002	18	8274321	10218
J.M. JONES & SONS, INC.	3295304	9272630	* * *	81	2001	536	AAB	S40	1	11/2/2001	6	4993360	11642
SUNSET FORD	3099752	8980744	* * *	28	2001	185	AAB	S40	42	2/14/2002	17	6949294	8572
DRAEGER MOTOR COMPANY, INC.	139234A	9303673	* * *	21	2001	128	AAB	S40	42	12/17/2001	13	6757763	12609
FAMILY LINCOLN-MERCURY, LLC	35031402	3538081	* * *	56	2001	432	AAD	S40	42	2/8/2002	11	7178972	8300
RON CLARK FORD, INC.	9887002	6223400	* * *	102	2001	656	AAD	S40	42	10/19/2001	4	4858062	12013

RAY SCHULTENS FORD INC	058065A	2966191	* * * 5	2001	37	AAD	S26	42	1/14/2002	10	6323453	6393
MARK FORD-MERCURY INC	4637949	3542226	* * * 58	2001	440	AAD	S25	42	1/2/2002	10	6016645	18625
TENVOORDE FORD, INC.	165580A	2510540	* * * 109	2001	688	AAC	S40	42	11/19/2001	B	5286309	11570
HERTZ RAC - SACRAMENTO	32738201	*	* * * 24	2001	136	AAB	S40	42	12/4/2001	11	5646020	20324
SHENANDOAH FORD, INC.	112173A	6362901	* * * 73	2001	480	AAD	S40	42	11/28/2001	10	5429967	22461
SUNBURY MOTOR CO	079950A	2867748	* * * 114	2001	717	AAD	S25	1	1/21/2002	5	6756315	12999
PREMIER FORD, INC.	5681601	6953000	* * * 117	2001	735	AAD	S40	1	1/9/2002	10	6268365	8701
JOHN M. LANCE FORD, LLC	080806D	8718800	* * * 67	2001	471	AAB	S40	42	4/25/2002	14	8312045	41814
DESERT LINCOLN-MERCURY	7810751	8761922	* * * 108	2001	687	AAC	S40	41	11/30/2001	5	5494001	10711
PEACHTREE FORD	2858954	4557673	* * * 12	2001	82	AAB	S40	42	12/17/2001	9	5772212	13400
HERTZ RAC - SAN DIEGO	35577001	*	* * * 14	2001	94	AAB	S40	42	11/15/2001	10	5402164	21643
BEACH FORD, INC.	415283A	4862717	* * * 90	2001	596	AAD	S40	42	12/4/2001	11	6519548	25127
COLUMBINE FORD, INC.	019503B	6251680	* * * 76	2001	514	AAB	S26	42	2/20/2002	12	6996231	19194
LIBERTYVILLE L-M SALES INC	32243801	3671700	* * * 127	2001	793	AAD	S40	41	11/29/2001	9	5442994	24489
TRI MOTOR SALES INC	027615A	8882931	* * * 57	2001	433	AAB	S26	42	2/14/2002	10	7020046	15942
WINNER FORD	4034152	4284000	* * * 63	2001	455	AAD	S40	42	4/12/2002	6	8117824	16244
PARIS FORD LINCOLN MERCURY, IN	7952701	7842566	* * * 30	2001	185	AAC	S26	42	3/7/2002	10	7288754	23437
TRI-LAKES FORD/MERCURY, INC.	074871A	8915560	* * * 107	2001	685	AAD	S40	42	1/28/2002	5	6596274	15512

CHAMPION FORD, LLC	44664502	7983673	* * *	66	2001	468	AAD	S40	42	12/11/2001	9	5673695	23794
GRAND PRAIRIE FORD, INC.	5866702	6411334	* * *	71	2001	476	AAD	S39	1	1/11/2002	10	6311199	26570
DEWEY FORD, INC.	22852602	2822828	* * *	26	2001	177	AAC	S40	42	5/9/2002	11	8567653	19528
JENKINS LINCOLN-MERCURY	12226503	6826151	* * *	74	2001	484	AAC	S26	42	5/7/2002	16	8574234	34282
WOODFIELD FORD	096602A	6050600	* * *	46	2001	387	AAD	S25	42	3/6/2002	11	7311395	31259
LAMARQUE FORD INC	173791A	4432500	* * *	13	2001	89	AAE	S26	42	3/22/2002	13	7661592	33321
HOWELL MOTORS INC	2162001	4331800	* * *	82	2001	543	AAD	S25	1	12/13/2001	8	5803326	27224
JIM BURKE FORD	6521351	3283800	* * *	18	2001	105	AAB	S40	41	3/6/2002	14	7341923	25131
PAUL HARVEY FORD SALES, INC.	7264501	2988814	* * *	119	2001	748	AAB	S26	42	5/15/2002	18	8719893	31944
JACKSON FORD, INC.	138512A	7878500	* * *	99	2001	645	AAD	S25	1	11/5/2001	7	4940391	9282
HASTINGS AUTOMOTIVE INC	139371A	4974030	* * *	29	2001	188	AAB	S39	68	3/4/2002	6	7426481	4181
D & D MOTORS, INC.	163039A	8770711	* * *	22	2001	131	AAD	S40	42	11/30/2001	6	5543349	7380
BILL UTTER FORD, INC.	7366051	3217400	* * *	105	2001	682	AAD	S40	33	9/28/2001	8	4542237	7130
SENTRY FORD, INC.	122909A	3956400	* * *	31	2001	198	AAB	S25	42	11/21/2001	5	6073635	7254
LAIRD NOLLER AUTOMOTIVE, INC.	145476B	8433500	* * *	47	2001	388	AAD	S40	42	10/24/2001	7	4654811	15733
GRAND FORD, INC.	2393901	3866120	* * *	68	2001	472	AAD	S40	41	12/18/2001	8	5871358	21091
DIAMOND FORD, INC.	7919701	4452405	* * *	55	2001	427	AAB	S40	42	1/18/2002	10	6710959	21143
MOLL FORD, INC.	4269301	6320770	* * *	98	2001	642	AAC	S26	42	3/21/2002	11	7543368	23055
PRESTIGE FORD	20721703	8643673	* * *	128	2001	795	AAE	S28	28	3/1/2002	12	7285885	21085
YUCCA VALLEY FORD CENTER	8331801	9652353	* * *	131	2001	44	AAB	S40	42	3/1/2002	13	7287639	8733
HERITAGE FORD LINCOLN MERCURY.	1639802	5263325	* * *	133	2001	49	AAB	S28	42	4/29/2002	4	8288071	1050
WEST BROTHERS FORD, INC.	4433501	4684100	* * *	132	2001	48	AAD	S40	42	10/10/2001	7	4556537	8588
FAMILY FORD LINCOLN-MERCURY	9255402	3733431	* * *	136	2001	200	AAC	S40	1	11/19/2001	11	5453983	7819

MATTHEWS SALES CO	17646103	6444700	* * *	143	2001	647	AAB	S40	42	9/27/2001	6	3986471	7923
BOB BELL FORD	274402C	7663600	* * *	135	2001	123	AAD	S40	42	4/11/2002	12	7939539	12687
KENDALL FORD	29816702	3422151	* * *	137	2001	550	AAD	S40	42	11/5/2001	7	5016351	7689
LEIF JOHNSON FORD	51588702	4543711	* * *	145	2001	788	AAC	S40	42	4/1/2002	5	8247354	18757
KIEFFE & SONS FORD	1115902	8242477	* * *	220	2001	442	AAB	S40	42	2/11/2002	10	8848476	24418
HERTZ RAC - WEST PALM BEACH	40584401	*	* * *	148	2001	31	AAB	S40	42	10/19/2001	9	5237360	19996
DON THOMPSON FORD-MERCURY	4123402	8492351	* * *	160	2001	176	AAD	S26	42	4/16/2002	6	8989560	2566
KINGS COLONIAL FORD, INC.	7539302	2648400	* * *	159	2001	164	AAC	S26	42	3/26/2002	11	7630601	5389
SOERENS FORD, INC.	33432401	7819800	* * *	217	2001	417	AAB	S26	42	5/13/2002	12	8750389	12301
HERTZ RAC - FT MYERS	37747201	*	* * *	152	2001	92	AAC	S40	42	1/15/2002	12	6261215	11009
GRAND PRAIRIE FORD, INC.	5631702	6411334	* * *	225	2001	584	AAD	S25	42	9/26/2001	5	4238755	12618
TOWER FORD INC	143234A	4688400	* * *	154	2001	100	AAD	S26	41	5/14/2002	13	8616902	11605
SLOAN MOTORS INC	051843C	3632870	* * *	230	2001	742	AAD	S40	1	11/21/2001	8	5295624	11240
CENTRAL EQUIP MGT DI	6290501	*	* * *	226	2001	586	AAD	S25	42	4/3/2002	13	8930379	24368
JACK DEMMER FORD, INC.	271531A	7212600	* * *	221	2001	465	AAD	S40	41	5/21/2002	14	8883082	16455
WALNUT CREEK FORD	325616A	8322900	* * *	151	2001	83	AAC	S40	42	11/29/2001	5	5438348	5210
SKAGIT RIVER FORD, INC.	9754801	7572000	* * *	219	2001	434	AAB	S40	1	12/6/2001	9	6616210	16420
HUB CITY FORD, INC.	5381152	2334500	* * *	161	2001	181	AAD	S40	42	4/5/2002	12	7841654	11408
WINNER FORD, INC.	026113C	3764434	* * *	156	2001	127	AAC	S25	42	10/24/2001	10	5424898	22051
HERTZ RAC - FT MYERS	37747201	*	* * *	153	2001	93	AAC	S26	42	6/10/2002	17	9068368	18113
DESERT LINCOLN-MERCURY	7529652	8761922	* * *	232	2001	784	AAC	S26	42	5/14/2002	9	8629636	12307

LARSON FORD, INC.

026431B -848 * * * 157 2001 130 AAB S26 33 4/2/2002 9 776682 3093

METRO FORD INC

5035701 7519711 * * * 149 2001 45 AAC S26 42 5/22/2002 4 9068891 4582

SKYLINE FORD SALES, INC.

118985A 3274500 * * * 233 2001 27 AAD S26 1 4/12/2002 13 8307258 29846

ESTABROOK MOTOR CO., INC.

18685902 7622641 * * * 236 2001 556 AAD S26 42 3/6/2002 15 9124671 25630

JIM BURKE FORD

6521361 3283600 * * * 235 2001 106 AAB S25 42 1/14/2002 12 6484356 21176

UNION PARK FORD, INC.

35606901 6587245 * * * 234 2001 102 AAB S26 42 3/6/2002 10 7305543 5347

4357 * NA TN 11001
6614 * NA NC 11001
712 * NA CA 11001
2212 * NA OH 11001
1170 * NA WA 11001
4988 * NA FL 11001
10 * NA MD 11001
10103 * NA GA 11001
978 * NA NC 11001
9372 * NA MN 11001
4716 * NA IN 11001
2319 * NA OH 11001
7232 * NA NE 11001
48 * NA VA 11001
4223 * NA CA 11001
4889 * NA FL 11001
1180 * NA SC 11001
11491 * NA TX 11001
2611 * NA MD 11001
1591 * NA IL 11001
20280 * NA IA 11001
5517 * NA CA 11001
7670 * NA TX 11001
49149 * NA IN 11001
6863 * NA TX 11001

8765 * NA OR 11001

3882 * NA CT 11001

9473 * NA MN 11001

8533 * NA WA 11001

3803 * NA VA 11001

1428 * NA PA 11001

9671 * NA MI 11001

2284 * NA OH 11001

3915 * NA NV 11001

374 * NA GA 11001

5428 * NA CA 11001

6727 * NA VA 11001

3218 * NA CO 11001


10519 * NA IL 11001

2897 * NA OH 11001

1248 * NA NJ 11001

3881 * NA TX 11001

866 * NA NY 11001



8450 * NA LA 11001
2406 * NA TX 11001
7188 * NA IA 11001
11640 * NA FL 11001
3077 * NA IL 11001
6422 * NA MS 11001
690 * NA NY 11001
4434 * NA TX 11001
4746 * NA IN 11001
115 * NA MI 11001
9578 * NA MN 11001
976 * NA SC 11001
2483 * NA TX 11001
8888 * NA MA 11001
5140 * NA KS 11001
7417 * NA OH 11001
2813 * NA MI 11001
1842 * NA MN 11001
2415 * NA TX 11001
3072 * NA CA 11001
5845 * NA TN 11001
7024 * NA MO 11001
1058 * NA OH 11001

1359 * NA PA 11001
68 * NA MD 11001
8568 * NA OR 11001
2629 * NA TX 11001
5503 * NA CA 11001
46300 * NA FL 11001
1135 * NA TX 11001
4847 * NA GA 11001
8361 * NA WI 11001
4984 * NA FL 11001
2406 * NA TX 11001
3654 * NA NY 11001
1209 * NA PA 11001
49149 * NA IN 11001
2771 * NA MI 11001
7820 * NA CA 11001
8571 * NA WA 11001
6481 * NA LA 11001
1764 * NA CT 11001
4984 * NA FL 11001
11825 * NA NV 11001



20589 * NA NJ 11001

4871 * NA FL 11001

543 * NA TX 11001

6534 * NA MS 11001

4434 * NA TX 11001

771 * NA DE 11001

REPLACE SEATBELT BUCKLE REPLACE SEATBELT BUCKLE
VERIFY CONCERN, D S SEAT BELT BUCKLE NOT LATCHING CORRECTLY, REMOVE SEAT INSTALLED
NEW BUCKLE, CHECK OPERATION OK
REPLACED LEFT FRONT BUCKLE
STICKS WONT LATCH CORRECTLY REPLACE
CHECKED FOR CUSTOMERS CONCERN AND FOUND THE BUCLE FAULTY REPLACED AND RECHECKED
ALL OK
INSPECT SEAT BELT BUCKLE. OK.
SEAT BELT BUCKLE JAMMED INSPECT AND REPLACE SEATBELT BUCKLE
REPLACED LEFT AND RIGHT FRONT SEAT BELT BUCKLES
INOP REPL FR 2 SEATBELT ASSYS SEATBELT ASSEMBLY FRONT REPLACE
FOUND BOTH FRONT BUCKLES NOT LATCHING PROPERLY. RPELACED BOTH FRONT SEAT BELT
BUCKLES.
20802 REPLACE DRIVER SEAT BELT NOT LATCHING AL THE TIME
REMOVE SEAT REPLACE SEAT BELT ASSY

VERIFIED SEATBELT WILL NOT LATCH, R AND R DRIVERSIDE SEATBELT ASSY

REPLACE DRIVERS SEAT BELT LATCH WARR
LT/FT SEAT BELT BUCKLE IS ON ORDER SEAT WONT MOVE FOWARD
FOUND DRIVERS SEAT BELT BUCKLE BROKEN INTERNAL REPLACE BUCKLE
REPLACED RIGHT FRONT SEAT BELT BUCKLE WOULD NOT LATCH
NEC REPLACE WITH NEW PART.
REMOVED BOTH FRONT SEATS TO REPLACE BOTH SEATBELT BUCKLE ASSEMBLIES
DOES NOT LATCH RELACE RF SEAT BELT ASSY
CHECKED AND REPLACED DRIVERS SEAT BELT ASSEMBLY

W REMOVE AND REPLACE DRIVER SEAT BELT BUCKLE

VERIFIED CUSTOMER COMPLAINT FOUND INOP R AND ISEAT R AND R SEATBELT BUCKLE

CHECKED OUT FOUND BOTH FRONT BELTS WERE NOT OPERATING PROPERLY AND REPLACED BOTH
RF SEAT BUCKLE INOP TO ACCESS HAD TO REMOVE ROLL CAGE RADIO THEN REMOVE SEAT TO RPL
BUCKLE TO CORRECT

REPLACED LF SEATBELT BUCKLE

SEAT BELT ASSEMBLY REAR RIGHT OR LEFT REPLACE

11570 VERIFIED CUSTOMER COMPLAON ON VEHICLE CHKE THE SEAT BELT CLIP THE PART THAT GOES IN TO THGE BUCKLE AND SEEMS TO BE OKAY AND PROBLEM SEEMS TO INERNAL IN THE LF HAND BUCKLE NOT HOLDINT HE CLIP

INTO PLACE FULLY AT ALL TOOK USED THE SPECIAL TOOL THAT IS USED FOR THE RECALL AND IT FAILED THE TEST, INSTALLED NEW DRIVES SIDE BUCKLE ON LF SIDE DRIVES SEAT, VEHCOIEL IS A SQUAD CAR AND HAD

INSPECTED AND CONFIRMED THAT BUCKLE IS INOP REM OVED RT FRONT SEATBELT ASSEMBLY. RECHECKED OPERATION, NOW OK. ADDRESS CUSTOMER CONCERN SEAT BELT WILL NOT LATCH REMOVE SEAT AND REMOVE AND REPLACE SEATBELT LATCH REINSTALL SEAT INSPECTED & VERIFIED DS SEATBELT LATCH WAS BROKEN. REPLACED SEATBELT BUCKLE. CHECKED OPER OK. MT NO LOPS. DRIVERS SEATL BELT BUCKLE IS BROKEN WILL NOT LATCH PLOLICE CAR WITH REAR CAGE REMOVE DRIVERS SEAT AND INSTALLED NEW SEAT BELT BUCKLE

INSPECTED SEATBELT NOT WORKING REPLACED LT FRONT SEAT BELT BUCKLE AND RETESTED

STICKING LATCH SEATBELT ASSEMBLY FRONT REPLACE

INOP SEATBELT ASSEMBLY FRONT REPLACE

LEFT FRT SEAT BELT BUCKLE INOP REMOVE AND REPLACED SEAT BELT ASSY.. 25127 LEFT FRONT SEAT BELT BUCKLE NOT LATCHING WARR VERIFY CONCERN FOUND THE DRIVER SEAT BELT BUCKLE NOT LATCHING REMOVE THE SEAT AND REPLACE THE SEAT BELT LATCH REINSTALL THE SEAT AND RECHECK SEA TEST BUCKLE OPERATION BUCKLE LATCH TROUBLES REPLACE BUCKLE ASSEMBLY

T BELT OPERATION SEAT BELT IS LATCHING PROPERLY NOW

INSTALL DRIVERS SEATBELT RECEPTACLE

CHECK OUT REPLACE BOTH FRONT SEAT BELT BUCKLES RECHECK OK VERIFY CUSTOMER CONCERN 2 FRONT SEATBELTS WILL NOT LATCH AND SECURE REMOVE 2 FRONT SETAS AND R AND R 2 FRONT SEATBELT BUCKLES REINSTALL SEATB CHECK OK BOTH FRONT SEAT BELT BUCKLES NOT LATCHING R R BOTH FRONT SEAT BELT BUCKLES RETEST LATCHING PROPERLY VERIFIED COMPLAINT REMOVED AND REPLACED LEFT FRONT SEATBELT LATCH ASSY

REPLACED BOTH FRT BUCKET SEATS SEATBELT BUCKLES NOT OPERATING PROPERLY

MO 26671, CC42, VERIFIED CUSTOMER CONCERN RF SEAT BELT BUCKLE WILL NOT ALLOW BELT TO CLIP IN. R AND R PASSENGER SEAT FOR ACCESS. REPLACED SEAT BELT BUCKLE VERIFIED REPAIRS AND BUCKLE IS OPERATING PROPER LY.

STICKING REPLACED DRIVERS SEATBELT BUCKLE

REPLACED SEATBELT BUCKLE DRIVERS SIDE

31258 DRIVERS SEAT BELT LATCH INOP INSPECT AND REPLACE INOP DRIVERS SIDE SEAT BELT LATCH

33321 FOUND BUCKLE COMES LOOSE BY ITSELF, REPLACED BUCKLE, CHECKED OK

M TIME TO REPLACE BELT AND BUCKLE

25131 C S THAT PASSANGER SIDE SEAT BELT WILL NOT LATCH REMOVED SEAT BELT AND REPLACED WITH NEW NOW WORKS FINE

R&R LEFT FRT SEAT TO REPLACE SEAT BELT LATCH. NO AVAILABLE LABOR TIME

8282 61384A .6 MT .2 61202BP 01CC SPW 10 05 01 138512RO 1538 ACC MILES MT ACCESS GATE IN REAR SEAT POLICE VEHICLE

4181 CK AND INSPECT FOR ANY COIN OR ANYTHING WAS FALL IN THE BUCKET. INSTALL NEW SEAT BELT BUCKET.

7380 REPLACED PASSENGER FRT SEAT BELT LOCK

SEATBELT WILL NOT LATCH REPLACED

REPLACED BELT

RPL DRIVERS SEAT BELT BUCKLE WILL NOT LATCH PREV RPL PSGR SIDE.

TECH REPLACED SEAT BELT BUCKLE

REPLACED ASSEMBLY

REMOVED LEFT FRONT SEAT. REPLACED SEAT BELT BUCKLE.

LATCH WAS INOP HAD AIR BAG LIGHT ON NGS TEST CODE B2432 MONITOR TEST REPLACED OPEN BUCKLE AND SWITCH CLEAR CODES

REPLACE SEAT BELT

REPLACE FRONT SEAT BELTS

INSPECTED. REPLACED BOTH SEAT BELT BUCKLES.

VERIFY CONCERN. SOP REPLACE SEATBELT.CHECK OPERATION,OK

REPLACED BOTH FRONT SEAT BELT BUCKLE ASSEMBLIES.

12887 SEAT BELT BUCKLE WARR REPLACED DRIVERS SIDE SEAT BELT BUCKLE

TEST AND BOTH SEAT BELTS FAILED REPLACED BOTH LEFT AND RIGHT FRT SEAT BELT BUCKLES

CHECKED AND TESTED. REPLACED BOTH SEAT BELT HALVES.

DIAG AND REPLACED BOTH SEAT BELT BUCKLES.

REPLACE L F SEAT BELT BUCKLE

REPLACED THE FRONT SEAT BELT BUCKLES

DOES NOT OEPERATE PROPERLY. REMOVED AND REPLACED RIGHT FRONT SEAT BELT BUCKLE.

REMOVE SEAT TRACK TO REPLACE BOTH BUCKLE ENDS

VERIFY,REPLACE SEAT BELT ASSY,LEFT FRT.

MO 12828 CC 42 CONFIRMED.SEAT BELT UNLATCHES.REPLACED SEAT BELT BUCKLE.

REPLACE SEAT BELT

CHECK SEATBELTS AND REPLACE LEFT FRONT BUCKLE

TESTED AND FOUND THE SEAT BELT WOULD NOT HOLD TENSION AND REPLACED

16455 TESTED SEAT BELT FOUND RELEASE BUTTON STICKING AND REPLACED

5211 VERIFIED SEATBELT BUCKLE NOT LATCHING. INSPECT AND REPLACE 1 SEATBELT BUCKLE.
RETEST, OK NOW. POWER SPLIT BENCH, W O SIR.

CONFIRMED CONCERN AND REPLACED THE RIGHT FRONT SEATBELT BUCKLE ASSEMBLE WITH
UPDATED PART PER FORD & RECHECKED OK.

DOESNTOPERATE PROP SEATBELT ASSEMBLY FRONT REPLACE

REPLACED SEAT BELT AS NEEDED

VERIFY,R/R SEATBELT,RIGHT SIDE, AND REPLACE, VERIFY REPAIR.

X CK R&R BOTH FRT SEAT BELT BUCKLES & REPL

REPLACED DRIVERS SEAT BELT. LABOR WAS PREVIOUSLY CLAIMED ON RO 26431 DATED 03 16 02

REPLACE PASSENGER SEAT BELT

PART ON NATIONAL BACKORDER, REPLACE DRIVERS SEAT BELT
21176 C S THAT DRIVER SIDE FRONT SEAT BELT INOP REMOVED SEAT BELT AND REPLACED WITH
NEW SEAT BELT BUCKLE NOW WORKS FINE
VERIFIED CONCERN REPLACED LEFT FRONT SEATBELT ASSY

CUST STATES THAT THE PASSANGER SIDE FRONT SEAT BELT WILL NOT BUCKLE
D S SEAT BELT WONT LATCH

PSASSENGER SIDE SEAT BELT WILL NOT LATCH
SEAT BELT PART IN

CUSTOMER STATES THAT THE SEAT BELT BUCKLE IS HARD TO LATCH CHECK AN
CHECK SEAT BELT. WILL NOT LATCH.
DRIVERS SEATBELT WILL NOT LATCH
FRONT SEAT BELTS LEFT & RIGHT HARD TO LATCH
SEAT BELTS BUCKLES WONT LATCH

OTHER RESTRAINT TROUBLES SEAT BELTS DONT STAY BUCKLED FRONT ONES
S32 DRIVER SEAT BELT NOT LATCH ALL THE TIME S.O.P
DRIVERSIDE FRONT SEAT BELT INOP WILL NOT LATCH

CUSTOMER STATES THAT THE SEATBELT IS NOT LATCHING ON THE DRIVERSIDE

CK FOR DRIVERS SEAT BELT WILL NOT LATCH AT ALL
DR SEAT BELT WONT FASTEN
CUST STATES DRIVER SIDE SEATBELT WILL NOT LATCH
CUST STATES RIGHT FRONT SEAT BELT INOP PART 8948
SEAT BELT WOULD NOT WORK PROPERLY. WOULD NOT LATCH PROPERLY
CUST CONCERNED THAT BOTH FRONT SEATBELT BUCKLES DO NOT LATCH PROPERLY
FRT PASS SEAT BELT DOES NOT LATCH IN

DRIVERS SEAT BELT WILL NOT LATCH

CK FOR DRIVERS SEAT BELT WILL NOT LATCH SOP PART NOW HERE
USE SPO 02040006

C S PASS FRONT SEATBELT WONT LATCH S40

SEAT BELT IS NOT LATCHING AND HOLDING RIGHT

CUSTOMER STATES RF SEATBELT BUCKLE WILL NOT LATCH.....CC S40

901	USA	123006	2	USA	Q21	a	
252	USA	121027	E84	USA	Q21	a	
949	USA	171098	1	USA	Q21	a	
330	USA	147718	E84	USA	Q21	a	
509	USA	174522	E84	USA	Q21	a	
883	USA	121498	2	USA	Q21	a	
301	USA	127650	E84	USA	Q21	a	
770	USA	121122	2	USA	Q21	a	
919	USA	121027	E84	USA	Q21	a	
651	USA	158103	E84	USA	Q21	a	
317	USA	147034	E84	USA	Q21	a	
440	USA	147718	2	USA	Q21	a	
402	USA	141293	E84	USA	Q21	a	
703	USA	127042	1	USA	Q21	a	
628	USA	171037	E84	USA	Q21	a	
954	USA	124081	2	USA	Q21	a	
884	USA	121268	1	USA	Q21	a	
512	USA	152792	2	USA	Q21	a	
410	USA	127650	E84	USA	Q21	a	
847	USA	141066	E84	USA	Q21	a	
563	USA	141701	E93	USA	Q21	a	
714	USA	171034	E84	USA	Q21	a	
512	USA	152146	E84	USA	Q21	a	
		USA	147723	2	USA	Q21	a
806	USA	152251	E84	USA	Q21	a	

CUSTOMER STATES THE SEATBELT LATCH WILL NOT LATCH AT TIMES, INSPECT AND ADVISE.	503	USA	174472	1	USA	Q21	a
CUSTOMER STATES DRIVERS SIDE SEAT BELT NOT LATCHING ALL THE TIME	860	USA	113212	E84	USA	Q21	a
CUSTOMER REQUEST SEATBELT DOESNT LOCK IN CORRECTLY PLEASE CHECK AND ADVISE	320	USA	158103	2	USA	Q21	a
C S THAT PASSENGER SIDE SEATBELT BUCKLE WONT LATCH	380	USA	171816	E84	USA	Q21	a
CUSTOMER SAYS THAT PASSENGER SEAT BELT WILL NOT LATCH	540	USA	127077	E84	USA	Q21	a
CHECK SEAT BELT LF SEAT, DOES NOT LATCH	570	USA	113551	E84	USA	Q21	a
	810	USA	148515	2	USA	Q21	a
CUST STATES THE LT FRONT SEAT BELT WILL NOT BUCKLE	218	USA	147718	E81	USA	Q21	a
DRIVERS SEATBELT DOESNT LATCH	702	USA	171170	2	USA	Q21	a
CUST. STATES LEFT FRONT SEAT BELT WILL NOT LATCH S.O.P. HERE	770	USA	121018	E84	USA	Q21	a
USE SPO 01344037	858	USA	171816	E84	USA	Q21	a
RIGHT FRONT SEAT BELT BUCKLE DOES NOT LATCH							
L F SEAT BELT WONT LATCH	757	USA	127054	E84	USA	Q21	a
CUSTOMER STATES DRIVERS BUCKLE WILL NOT LATCH PROPERLY	970	USA	156483	E84	USA	Q21	a
INSTALL SOP DRIVERS SIDE SEAT BELT SEATBELT STICKS AT TIMES HARD TO GET TO	847	USA	141895	E84	USA	Q21	a
CLASP	419	USA	147718	E84	USA	Q21	a
BOTH FRONT SEAT BELT BUCKLES WONT LATCH	609	USA	116010	E84	USA	Q21	a
CK BOTH FRONT SEAT BELTS INOP							
CUST STATES SEAT BELTS WONT LATCH	803	USA	153078	E84	USA	Q21	a
LEFT FRONT SEATBELT NOT LATCHING PROPERLY	518	USA	113551	E84	USA	Q21	a

CUST STATES THE FRONT DRIVER SEAT BELT WILL NOT LATCH S40

318 USA 123036 E84 USA Q21 a

S39 PASSENGER FRONT SEAT BELT WILL NOT CLIP IN

214 USA 152792 E84 USA Q21 a

CUSTOMER STATES THAT DRIVERS SEAT BELT IS INOP, WONT LOCK IN.

515 USA 153031 E84 USA Q21 a

CUSTOMER STATES THAT DRIVERS SEATBELT WONT LATCH

941 USA 124081 E84 USA Q21 a

DRIVERS SIDE SEAT BELT WILL NOT LATCH

847 USA 141895 E84 USA Q21 a

CHECK DRIVER SIDE MIDDLE SEATBELT AND PASSENGER SIDE FRONT WILL NOT LATCH

228 USA 124770 E84 USA Q21 a

DRIVERS FRONT DRIVERS SIDE SEA BELT WONT STAY LATCHED

716 USA 113551 E84 USA Q21 a

PASSANGER SIDE SEATBELT WILL NOT LATCH

512 USA 171818 E90 USA Q21 a

CK LEFT FRT SEAT BELT WONT FASTEN PART OF THE TIME

317 USA 147723 E84 USA Q21 a

SINCE RECALL SEATBELTS STILL DONT LATCH PROPERLY.

517 USA 148515 01S21 USA Q21 a

REPAIR PASS SIDE FRONT SEAT BELT WILL NOT LOCK IN

651 USA 158007 2 USA Q21 a

CUSTOMER STATES RIGHT SIDE SEAT BUCKLE NOT LATCHING (01S21C ALREADY DONE)

864 USA 121795 01S21 USA Q21 a

CK DRIVERS SEATBELT WILL NOT LATCH AT TIMES

940 USA 152792 2 USA Q21 a

CHECK DR. SIDE SEAT BELT WILL NOT LATCH

781 USA 111025 E93 USA Q21 a

DRIVERS SIDE SEAT BELT BUCKLE WILL NOT LATCH

785 USA 153400 E84 USA Q21 a

CK DR SEAT BELT BUCKLE WONT LATCH PROPERLY

330 USA 144014 E84 USA Q21 a

SEAT BELT NOT LATCHING

616 USA 148515 E84 USA Q21 a

LEFT FRONT SEAT BELT DOESN'T BUCKLE.

320 USA 158103 E84 USA Q21 a

DRIVERS SIDE SEAT BELT WILL NOT LATCH AT TIMES. CC S26

972 USA 152020 E84 USA Q21 a

SEAT BELT WONT HOLD

760 USA 171415 E84 USA Q21 b

CUSTOMER STATES SEAT BELTS DO NOT STAY LATCHED

931 USA 123348 1 USA Q21 b

CUSTOMER STATE BOTH FRONT SEAT BELT WILL NOT STAY LATCHED RECALL HAS ALREADY BEEN PERFORMED AND PASSED

573 USA 153339 1 USA Q21 b

DRIVERS SIDE SEATBELT WILL NOT STAY LATCHED

740 USA 144521 2 USA Q21 b

CHECK BOTH FRONT SEAT BELTS WILL NOT STAY LATCHED IN BUCKLES.

CK FOR DRIVERS SIDE SEAT BELT, NOT STAYING LATCHED
CUSTOMER REQUEST TO RECHECK BOTH FRT SEAT BELTS AS RELATED TO RECALL; NOT
STAYING BUCKLED.

SEAT BELTS WILL NOT STAY LATCHED

CUSTOMER STATES THE PASSANGER AND DRIVERS SEAT BELT BUCKLES COME LOOSE. SOP
HERE.

L F SEAT BELT POPS OPEN

SEAT BELTS POPPING LOOSE

CUSTOMER STATES SEAT BELT BUCKLE WILL NOT STAY LATCHED ON PASSENGER SIDE.

S26 DRIVER SIDE SEAT BELT DOESNT STAY BUCKLED

L/F AND R/F SEAT BELTS COME UNBUCKLED.

S25 CUST STATES DRIVERS SEAT BUCKLE COMES UNLATCHED WONT HOLD

C S DRIVER SEAT BELT OPENS BY ITSELF

DRIVERS SIDE SEATBELT WILL NOT STAY CLIPPED IN
THE DRIVER SEAT BELT IS NOT WORKING RIGHT

DRIVERS SEAT BELT WONT STAY BUCKLED RELEASE BUTTON STICKS

CHECK AN ADVISE CUSTOMER STATES DRIVER SIDE SEAT BELT UNLATCHES

THE SEATBELTS HAD BEEN TESTED & PASSED AS OF RECALL 01S21, BUT NOW THE RIGHT
FRONT SEATBELT BUCKLE WONT HOLD AT ALL.

CUST STATES DRV SIDE SEAT BELT COMES UNLATCHED

C S THAT THE D S SEAT BELT WILL ENGAGE AT TIMES AND WILL ALSO RELEASE AT WILL
RIGHT FRONT SATBELT WONT STAY LOCKED.
BOTH FRT SEAT BELT BUCKLES WILL NOT HOLD

610	USA	144004	2	USA	Q21	b
410	USA	127030	E84	USA	Q21	b
641	USA	174021	2	USA	Q21	b
940	USA	152792	E84	USA	Q21	b
661	USA	171436	E84	USA	Q21	c
	USA	148713	E84	USA	Q21	c
409	USA	152131	1	USA	Q21	c
912	USA	124452	1	USA	Q21	c
414	USA	141380	E84	USA	Q21	c
352	USA	124804	2	USA	Q21	c
214	USA	152020	E84	USA	Q21	c
516	USA	113083	1	USA	Q21	c
610	USA	144004	2	USA	Q21	c
	USA	147723	E84	USA	Q21	c
734	USA	148525	E84	USA	Q21	c
925	USA	172022	1	USA	Q21	c
360	USA	174522	E84	USA	Q21	c
337	USA	123271	1	USA	Q21	c
660	USA	111405	E84	USA	Q21	c
352	USA	124804	E84	USA	Q21	c
702	USA	171170	E84	USA	Q21	c

CTS DRIVERS SEAT BELT BUCKLE DOES NOT HOLD. PART WAS ORDERED ON 3 16 02 RO 26431
AT WHICH TIME THE PASS SIDE BUCKLE WAS REPLACED AND THE DRIVERS SIDE HAD TO BE
ORDERED.

CUSTOMER STATES FRONT PASSENGER SEAT BELT FAILS TO ENGAGE & LOCK PROPERLY,
EITHER WONT ENGAGE AND OR RELEASE ON ITS OWN
S26 PASS SIDE SEAT BELT UNFASTENS WHILE DRIVING
CUST STATES DRIVERS SEAT BELT WHILE DRIVING UNLOCKS

DRIVERS SIDE FRONT SEAT SEATBELT WILL COME UNDONE WHEN DRIVING AT TIMES
LFSEAT BELT WILL COME UNATTACHED WHILE DRIVING

732	USA	113584	1	USA	Q21	c
305	USA	124003	1	USA	Q21	c
214	USA	124770	E84	USA	Q21	d
228	USA	123071	E84	USA	Q21	d
512	USA	171816	E84	USA	Q21	d
302	USA	118023	2	USA	Q21	d

V05	FB	S08	2FAFP74WX1X	[REDACTED]	C/FB	C/F	C/FC	C/AI	C/B	C/VN	C/DU	AW	12/22/2000	7/14/2001
V05	FB	S08	2FAFP71WX1X	[REDACTED]	C/FB	C/F	C/FC	C/AB	C/B	C/VN	C/DU	AW	2/19/2001	3/2/2001
V05	FB	S08	2FAFP74W21X	[REDACTED]	C/FB	C/F	C/FC	C/AI	C/B	C/VN	C/DU	AW	10/16/2000	11/2/2000
V05	FB	S08	2FAFP71W01X	[REDACTED]	C/FB	C/F	C/FC	C/AB	C/B	C/VN	C/DU	AW	4/28/2001	10/2/2001
V05	FB	S08	2FAFP71W11X	[REDACTED]	C/FB	C/F	C/FC	C/AB	C/B	C/VN	C/DU	AW	5/2/2001	6/4/2001
V05	FB	S08	2FAFP71WX1X	[REDACTED]	C/FB	C/F	C/FC	C/AB	C/B	C/VN	C/DU	AW	11/27/2000	3/8/2001
V05	FB	S08	2FAFP71W61X	[REDACTED]	C/FB	C/F	C/FC	C/AB	C/B	C/VN	C/DU	AW	2/5/2001	2/22/2001
V05	FB	S08	2FAFP71W41X	[REDACTED]	C/FB	C/F	C/FC	C/AB	C/B	C/VN	C/DU	AW	5/10/2001	1/28/2002
V05	FB	S08	2FAFP71WX1X	[REDACTED]	C/FB	C/F	C/FC	C/AB	C/B	C/VN	C/DU	AW	2/22/2001	3/12/2001
V05	FB	S08	2FAFP71W01X	[REDACTED]	C/FB	C/F	C/FC	C/AB	C/B	C/VN	C/DU	AW	4/9/2001	4/20/2001
V05	FB	S08	2FAFP71W71X	[REDACTED]	C/FB	C/F	C/FC	C/AB	C/B	C/VN	C/DU	AW	1/12/2001	1/29/2001
V05	FB	S08	2FAFP71W51X	[REDACTED]	C/FB	C/F	C/FC	C/AB	C/B	C/VN	C/DU	AW	3/6/2001	3/21/2001
V05	FB	S08	2FAFP74W91X	[REDACTED]	C/FB	C/F	C/FC	C/AI	C/B	C/VN	C/D6	AW	3/13/2001	3/28/2001
V05	FB	S08	2FAFP74W81X	[REDACTED]	C/FB	C/F	C/FC	C/AI	C/B	C/VN	C/DU	AW	5/2/2001	6/19/2001
V05	FB	S08	2FAFP74W11X	[REDACTED]	C/FB	C/F	C/FC	C/AI	C/B	C/VN	C/DU	AW	8/14/2000	11/7/2000
V05	FB	S08	2FAFP71W31X	[REDACTED]	C/FB	C/F	C/FC	C/AB	C/B	C/VN	C/DU	AW	4/9/2001	4/23/2001
V05	FB	S08	2FAFP73WX1X	[REDACTED]	C/FB	C/F	C/FC	C/AB	C/B	C/VN	C/D6	AW	12/20/2000	8/8/2001
V05	FB	S08	2FAFP71W71X	[REDACTED]	C/FB	C/F	C/FC	C/AB	C/B	C/VN	C/DU	AW	2/7/2001	6/30/2001
V05	FB	S08	@ 2FAFP71W31X	[REDACTED]	C/FB	C/F	C/FC	C/AB	C/B	C/VN	C/DU	AW	4/30/2001	5/23/2001
V05	FB	S08	2FAFP73W41X	[REDACTED]	C/FB	C/F	C/FC	C/AB	C/B	C/VN	C/D6	AW	10/16/2000	1/5/2001
V05	FB	S08	2FAFP71W61X	[REDACTED]	C/FB	C/F	C/FC	C/AB	C/B	C/VN	C/DU	AW	5/8/2001	7/2/2001
V05	FB	S08	2FAFP73W41X	[REDACTED]	C/FB	C/F	C/FC	C/AB	C/B	C/VN	C/D6	AW	8/17/2000	10/14/2000
V05	FB	S08	2FAFP74W11X	[REDACTED]	C/FB	C/F	C/FC	C/AI	C/B	C/VN	C/DU	AW	8/14/2000	12/16/2000
V05	FB	S08	2FAFP71W91X	[REDACTED]	C/FB	C/F	C/FC	C/AB	C/B	C/VN	C/DU	AW	3/14/2001	3/22/2001
V05	FB	S08	2FAFP71W31X	[REDACTED]	C/FB	C/F	C/FC	C/AB	C/B	C/VN	C/DU	AW	2/21/2001	7/5/2001

V05	FB	S08	2FAFP74W71X1	[REDACTED]	C/FB	C/F	C/FC	C/AI	C/B	C/VN	C/DU	AW	3/8/2001	3/22/2001
V05	FB	S08	2FAFP71W81X1	[REDACTED]	C/FB	C/F	C/FC	C/AB	C/B	C/VN	C/DU	AW	1/31/2001	3/13/2001
V05	FB	S08	2FAFP71W21X1	[REDACTED]	C/FB	C/F	C/FC	C/AB	C/B	C/VN	C/DU	AW	4/3/2001	4/16/2001
V05	FB	S08	2FAFP74W01X1	[REDACTED]	C/FB	C/F	C/FC	C/AI	C/B	C/VN	C/DU	AW	1/10/2001	1/26/2001
V05	FB	S08	2FAFP71W81X1	[REDACTED]	C/FB	C/F	C/FC	C/AB	C/B	C/VN	C/DU	AW	2/6/2001	2/23/2001
V05	FB	S08	2FAFP71W11X1	[REDACTED]	C/FB	C/F	C/FC	C/AB	C/B	C/VN	C/DU	AW	5/28/2001	8/28/2001
V05	FB	S08	2FAFP71W11X1	[REDACTED]	C/FB	C/F	C/FC	C/AB	C/B	C/VN	C/DU	AW	3/27/2001	4/10/2001
V05	FB	S08	@ 2FAFP71W81X1	[REDACTED]	C/FB	C/F	C/FC	C/AB	C/B	C/VN	C/DU	AW	3/9/2001	3/21/2001
V05	FB	S08	2FAFP71W21X1	[REDACTED]	C/FB	C/F	C/FC	C/AB	C/B	C/VN	C/DU	AW	4/3/2001	7/31/2001
V05	FB	S08	2FAFP74W41X1	[REDACTED]	C/FB	C/F	C/FC	C/AI	C/B	C/VN	C/DU	AW	12/20/2000	4/20/2001
V05	FB	S08	2FAFP74W31X1	[REDACTED]	C/FB	C/F	C/FC	C/AI	C/B	C/VN	C/DU	AW	1/10/2001	1/31/2001
V05	FB	S08	2FAFP71W51X1	[REDACTED]	C/FB	C/F	C/FC	C/AB	C/B	C/VN	C/DU	AW	11/28/2000	1/22/2001
V05	FB	S08	2FAFP71W71X1	[REDACTED]	C/FB	C/F	C/FC	C/AB	C/B	C/VN	C/DU	AW	2/27/2001	3/13/2001
V05	FB	S08	2FAFP71W01X1	[REDACTED]	C/FB	C/F	C/FC	C/AB	C/B	C/VN	C/DU	AW	2/12/2001	3/15/2001
V05	FB	S08	2FAFP71W91X1	[REDACTED]	C/FB	C/F	C/FC	C/AB	C/B	C/VN	C/DU	AW	3/27/2001	4/23/2001
V05	FB	S08	2FAFP71W81X1	[REDACTED]	C/FB	C/F	C/FC	C/AB	C/B	C/VN	C/DU	AW	5/17/2001	10/19/2001
V05	FB	S08	2FAFP73W21X1	[REDACTED]	C/FB	C/F	C/FC	C/AB	C/B	C/VN	C/D6	AW	5/7/2001	5/30/2001
V05	FB	S08	2FAFP71W21X1	[REDACTED]	C/FB	C/F	C/FC	C/AB	C/B	C/VN	C/DU	AW	5/1/2001	9/14/2001

V05	FB	S08	2FAFP71W81X	[REDACTED]	C/FB	C/F	C/FC	C/AB	C/B	C/VN	C/DU	AW	3/29/2001	4/12/2001
V05	FB	S08	2FAFP71W81X	[REDACTED]	C/FB	C/F	C/FC	C/AB	C/B	C/VN	C/DU	AW	2/22/2001	4/3/2001
V05	FB	S08 @	2FAFP73W51X	[REDACTED]	C/FB	C/F	C/FC	C/AB	C/B	C/VN	C/D6	AW	12/13/2000	7/10/2001
V06	FB	S08 @	2FAFP71W81X	[REDACTED]	C/FB	C/F	C/FC	C/AB	C/B	C/VN	C/DU	AW	1/11/2001	1/29/2001
V06	FB	S08	2FAFP71WX1X	[REDACTED]	C/FB	C/F	C/FC	C/AB	C/B	C/VN	C/DU	AW	4/9/2001	5/3/2001
V05	FB	S08	2FAFP74W31X	[REDACTED]	C/FB	C/F	C/FC	C/AI	C/B	C/VN	C/DU	AW	2/14/2001	3/2/2001
V05	FB	S08	2FAFP71W61X	[REDACTED]	C/FB	C/F	C/FC	C/AB	C/B	C/VN	C/DU	AW	4/18/2001	5/14/2001
V05	FB	S08	2FAFP74W21X	[REDACTED]	C/FB	C/F	C/FC	C/AI	C/B	C/VN	C/DU	AW	1/12/2001	1/31/2001
V05	FB	S08 @	2FAFP71W11X	[REDACTED]	C/FB	C/F	C/FC	C/AB	C/B	C/VN	C/DU	AW	10/27/2000	11/15/2000
V05	FB	S08	2FAFP71W31X	[REDACTED]	C/FB	C/F	C/FC	C/AB	C/B	C/VN	C/DU	AW	4/11/2001	4/21/2001
V05	FB	S08	2FAFP73W31X	[REDACTED]	C/FB	C/F	C/FC	C/AB	C/B	C/VN	C/D6	AW	5/24/2001	10/5/2001
V05	FB	S08	2FAFP74W01X	[REDACTED]	C/FB	C/F	C/FC	C/AI	C/B	C/VN	C/DU	AW	4/24/2001	6/22/2001
V05	FB	S08	2FAFP71W31X	[REDACTED]	C/FB	C/F	C/FC	C/AB	C/B	C/VN	C/DU	AW	1/12/2001	2/12/2001
V05	FB	S08	2FAFP73W21X	[REDACTED]	C/FB	C/F	C/FC	C/AB	C/B	C/VN	C/D6	AW	5/25/2001	7/20/2001
V05	FB	S08	2FAFP71WX1X	[REDACTED]	C/FB	C/F	C/FC	C/AB	C/B	C/VN	C/DU	AW	3/30/2001	4/20/2001
V05	FB	S08	2FAFP71W81X	[REDACTED]	C/FB	C/F	C/FC	C/AB	C/B	C/VN	C/DU	AW	3/6/2001	5/9/2001
V05	FB	S08	2FAFP71W91X	[REDACTED]	C/FB	C/F	C/FC	C/AB	C/B	C/VN	C/DU	AW	4/10/2001	4/20/2001
V05	FB	S08	2FAFP71W31X	[REDACTED]	C/FB	C/F	C/FC	C/AB	C/B	C/VN	C/DU	AW	4/20/2001	5/4/2001
V05	FB	S08	2FAFP71W01X	[REDACTED]	C/FB	C/F	C/FC	C/AB	C/B	C/VN	C/DU	AW	1/31/2001	3/7/2001
V05	FB	S08	2FAFP74W71X	[REDACTED]	C/FB	C/F	C/FC	C/AI	C/B	C/VN	C/DU	AW	10/10/2000	2/26/2001
V05	FB	S08	2FAFP74W61X	[REDACTED]	C/FB	C/F	C/FC	C/AI	C/B	C/VN	C/DU	AW	5/16/2001	1/29/2002
V05	FB	S08	2FAFP74W81X	[REDACTED]	C/FB	C/F	C/FC	C/AI	C/B	C/VN	C/DU	AW	3/6/2001	3/22/2001
V05	FB	S08	2FAFP73W21X	[REDACTED]	C/FB	C/F	C/FC	C/AB	C/B	C/VN	C/D6	AW	11/13/2000	12/28/2000

V05	FB	S08	2FAFP71W31X	[REDACTED]	C/FB	C/F	C/FC	C/AB	C/B	C/VN	C/DU	AW	4/3/2001	4/17/2001
V05	FB	S08	2FAFP74W11X	[REDACTED]	C/FB	C/F	C/FC	C/AI	C/B	C/VN	C/DU	AW	11/2/2000	4/17/2001
V05	FB	S08	2FAFP71W61X	[REDACTED]	C/FB	C/F	C/FC	C/AB	C/B	C/VN	C/DU	AW	4/2/2001	4/19/2001
V05	FB	S08	2FAFP71W01X	[REDACTED]	C/FB	C/F	C/FC	C/AB	C/B	C/VN	C/DU	AW	5/3/2001	11/9/2001
V05	FB	S08	2FAFP71W91X	[REDACTED]	C/FB	C/F	C/FC	C/AB	C/B	C/VN	C/DU	AW	1/15/2001	4/18/2001
V05	FB	S08	2FAFP74W81X	[REDACTED]	C/FB	C/F	C/FC	C/AI	C/B	C/VN	C/DU	AW	1/31/2001	2/15/2001
V05	FB	S08	2FAFP73W51X	[REDACTED]	C/FB	C/F	C/FC	C/AB	C/B	C/VN	C/D6	AW	3/28/2001	10/30/2001
V05	FB	S08	2FAFP73W71X	[REDACTED]	C/FB	C/F	C/FC	C/AB	C/B	C/VN	C/D6	AW	4/5/2001	5/15/2001
V05	FB	S08	@ 2FAFP71W91X	[REDACTED]	C/FB	C/F	C/FC	C/AB	C/B	C/VN	C/DU	AW	5/17/2001	6/4/2001
V05	FB	S08	2FAFP74W31X	[REDACTED]	C/FB	C/F	C/FC	C/AI	C/B	C/VN	C/DU	AW	1/31/2001	2/15/2001
V05	FB	S08	2FAFP71W51X	[REDACTED]	C/FB	C/F	C/FC	C/AB	C/B	C/VN	C/DU	AW	4/9/2001	5/15/2001
V05	FB	S08	@ 2FAFP74W21X	[REDACTED]	C/FB	C/F	C/FC	C/AI	C/B	C/VN	C/DU	AW	4/9/2001	5/1/2001
V05	FB	S08	2FAFP71W11X	[REDACTED]	C/FB	C/F	C/FC	C/AB	C/B	C/VN	C/DU	AW	2/5/2001	3/27/2001
V05	FB	S08	2FAFP71W51X	[REDACTED]	C/FB	C/F	C/FC	C/AB	C/B	C/VN	C/DU	AW	3/14/2001	3/22/2001
V05	FB	S08	@ 2FAFP71W81X	[REDACTED]	C/FB	C/F	C/FC	C/AB	C/B	C/VN	C/DU	AW	4/12/2001	4/18/2001
V05	FB	S08	2FAFP74W41X	[REDACTED]	C/FB	C/F	C/FC	C/AI	C/B	C/VN	C/DU	AW	12/13/2000	7/17/2001
V05	FB	S08	2FAFP71W91X	[REDACTED]	C/FB	C/F	C/FC	C/AB	C/B	C/VN	C/DU	AW	3/5/2001	3/29/2001
V05	FB	S08	2FAFP73W41X	[REDACTED]	C/FB	C/F	C/FC	C/AB	C/B	C/VN	C/D6	AW	4/20/2001	5/3/2001
V05	FB	S08	2FAFP74W11X	[REDACTED]	C/FB	C/F	C/FC	C/AI	C/B	C/VN	C/DU	AW	8/18/2000	1/26/2001
V05	FB	S08	@ 2FAFP74W31X	[REDACTED]	C/FB	C/F	C/FC	C/AI	C/B	C/VN	C/DU	AW	1/31/2001	2/15/2001
V05	FB	S08	2FAFP71W01X	[REDACTED]	C/FB	C/F	C/FC	C/AB	C/B	C/VN	C/DU	AW	4/3/2001	8/23/2001

V05	FB	S08	2FAFP74W01X	[REDACTED]	C/FB	C/F	C/FC	C/AI	C/B	C/VN	C/DU	AW	4/25/2001	7/13/2001
V05	FB	S08	@ 2FAFP74W71X	[REDACTED]	C/FB	C/F	C/FC	C/AI	C/B	C/VN	C/DU	AW	8/24/2000	2/16/2002
V05	FB	S08	2FAFP74WB1X	[REDACTED]	C/FB	C/F	C/FC	C/AI	C/B	C/VN	C/D8	AW	3/12/2001	3/27/2001
V05	FB	S08	2FAFP71WB1X	[REDACTED]	C/FB	C/F	C/FC	C/AB	C/B	C/VN	C/DU	AW	12/21/2000	1/10/2001
V05	FB	S08	2FAFP74W21X	[REDACTED]	C/FB	C/F	C/FC	C/AI	C/B	C/VN	C/DU	AW	1/12/2001	1/31/2001
V05	FB	S08	2FAFP74W21X	[REDACTED]	C/FB	C/F	C/FC	C/AI	C/B	C/VN	C/DU	AW	4/3/2001	5/26/2001

DOBBS FORD AT WOLFCHASE	7522351	3825666	6R02	1W7Z	5481202	434
BILL CLOUGH FORD INC	2638661	7944176	6R02	1W7Z	5481202	609
CAPISTRANO FORD	20985501	2407000	6R02	1W7Z	5481202	680
COLUMBIANA FORD-MERCURY	017481B	4823831	6R02	1W7Z	5481202	812
DISCOVERY FORD LINCOLN MERCURY	7816801	7854551	6R02	1W7Z	5481202	1089
OKEECHOBEE MOTOR COMPANY	48952601	7632121	6R02	*	5481202	1214
KOONS COLLEGE PARK FORD	1542151	4745100	6R02	1W7Z	5481202	1225
JACKY JONES LINCOLN-MERCURY	4613301	6368875	6R02	1W7Z	5481202	1514
CAPITAL FORD INC	7021552	7904800	6R02	1W7Z	5481202	1827
TOUSLEY FORD, INC.	418328A	4847231	6R02	1W7Z	5481202	1704
DON HINDS FORD INC	150382A	8499000	6R02	1W7Z	5481202	2034
LIBERTY FORD SOLON, INC.	043130A	2481550	6R02	1W7Z	5481202	2056
JOHN MARKEL, INC.	257531A	3939700	6R02	1W7Z	5481202	2176
TED BRITT FORD SALES, INC.	31358201	5918484	6R02	1W7Z	5481202	2303
PASADENA FORD, INC.	3493851	9933673	6R02	1W7Z	5481202	2386
PLANTATION FORD	8700751	5842400	6R02	1W7Z	5481202	2428
EDWARDS AUTO SALES CO INC	3888901	6383631	6R02	1W7Z	5481202	2458
H. A. WILSON MOTOR COMPANY	5210801	3853232	6R02	1W7Z	5481202	2478
SHERWOOD FORD LINCOLN MERCURY	11042101	5484800	6R02	1W7Z	5481202	2699
GOLF MILL FORD, INC.	187910B	4709800	6R02	1W7Z	5481202	2734
J.M. JONES & SONS, INC.	3348501	9272830	6R02	1W7Z	5481202	2874
SUNSET FORD	4238061	8980744	6R02	1W7Z	5481202	3181
MAC HAIK FORD LINCOLN MERCURY	142240A	9303673	6R02	1W7Z	5481202	3194
CENTRAL EQUIP MGT DI	6633802		6R02	1W7Z	5481202	3240
RON CLARK FORD, INC.	10002601	8223400	6R02	1W7Z	5481202	3708

RAY SCHULTENS FORD INC	062676B	2866191	6R02	1W7Z	5461202	3730
MARK FORD-MERCURY INC	5032761	3542226	6R02	1W7Z	5461202	5427
TENVOORDE FORD, INC.	170337A	2510540	6R02	1W7Z	5461202	5799
UHLMANN MOTORS, INC.	353884A	7483355	6R02	1W7Z	5461202	6042
SHENANDOAH FORD, INC.	113817A	6362901	6R02	1W7Z	5461202	6146
SUNBURY MOTOR CO	085708A	2867746	6R02	1W7Z	5461202	6213
PREMIER FORD, INC.	5844901	6963000	6R02	1W7Z	5461202	6360
JOHN M. LANCE FORD, LLC	066286A	8718600	6R02	1W7Z	5461202	6600
TEAM FORD	5040553	3955100	6R02	1W7Z	5461202	6672
PEACHTREE FORD	3529951	4557673	6R02	1W7Z	5461202	7281
MOSSY FORD	7373651	2768100	6R02	1W7Z	5461202	8271
BEACH FORD, INC.	435097A	4862717	6R02	1W7Z	5461202	8526
COLUMBINE FORD, INC.	022365A	6251860	6R02	1W7Z	5461202	8677
LIBERTYVILLE L-M SALES INC	32805601	3671700	6R02	1W7Z	5461202	12192
TRI MOTOR SALES INC	030832B	8962931	6R02	1W7Z	5461202	13668
WINNER FORD	5078051	4284000	6R02	1W7Z	5461202	13772
PARIS FORD LINCOLN MERCURY, IN	8437301	7842566	6R02	1W7Z	5461202	13857
TRI-LAKES FORD/MERCURY, INC.	077463A	8915560	6R02	1W7Z	5461202	14455

CHAMPION FORD, LLC	48920701	7983673	6R02	1W7Z	5461202	14787
GRAND PRAIRIE FORD, INC.	8772201	6411334	6R02	1W7Z	5461202	14878
QUALITY FORD OF W. DES MOINES,	3188251	2231680	6R02	1W7Z	5461202	16349
JENKINS LINCOLN-MERCURY	12974102	6826151	6R02	1W7Z	5461202	16748
WOODFIELD FORD	027870A	6050800	6R02	1W7Z	5461202	17215
BUTCH OUSTALET INC	072857A	8635525	6R02	1W7Z	5461202	17311
HOWELL MOTORS INC	2444601	4331800	6R02	1W7Z	5461202	17974
CROSSTOWN FORD SALES, INC.	204311A	8517600	6R02	1W7Z	5461202	25062
FINCANNON FORD-MERCURY INC	7085903	3485100	6R02	1W7Z	5461202	31934
JACKSON FORD, INC.	141640A	7879500	6R02	1W7Z	5461202	1635
MIDWAY FORD COMPANY	071198A	6368200	6R02	1W7Z	5461202	4189
D & D MOTORS, INC.	168086A	8770711	6R02	1W7Z	5461202	6439
BILL UTTER FORD, INC.	7500451	3217400	6R02	1W7Z	5461202	6809
YORK FORD INC	273436A	2311945	6R02	1W7Z	5461202	7252
LAIRD NOLLER AUTOMOTIVE, INC.	150267A	8433500	6R02	1W7Z	5461202	7428
GRAND FORD, INC.	2668101	3868120	6R02	1W7Z	5461202	14036
DIAMOND FORD, INC.	8219401	4452406	6R02	1W7Z	5461202	14098
MOLL FORD, INC.	4552401	6320770	6R02	1W7Z	5461202	16014
PRESTIGE FORD	22850901	8643673	6R02	1W7Z	5461202	20162
YUCCA VALLEY FORD CENTER	8367301	3652353	6R02	1W7Z	5461202	286
HERITAGE FORD LINCOLN MERCURY,	1726101	5283325	6R02	1W7Z	5461202	287
WEST BROTHERS FORD, INC.	4610701	4884100	6R02	1W7Z	5461202	3420
FAMILY FORD LINCOLN-MERCURY	9830101	3733431	6R02	1W7Z	5461202	3540

MATTHEWS SALES CO	17791902	8444700	8R02	1W7Z	5461202	3840
BOB BELL FORD	292534A	7863800	8R02	1W7Z	5461202	6171
KENDALL FORD	30824001	3422151	8R02	1W7Z	5461202	7420
LARRY SLACK FORD-MERCURY, INC.	2318801	8721133	8R02	1W7Z	5461202	18752
KIEFFE & SONS FORD	1253701	8242477	8R02	1W7Z	5461202	234
HERTZ RAC - WEST PALM BEACH	41922201		8R02	1W7Z	5461202	328
DON THOMPSON FORD-MERCURY	4196301	8492351	8R02	1W7Z	5461202	750
KINGS COLONIAL FORD, INC.	7764702	2846400	8R02	1W7Z	5461202	1473
SOERENS FORD, INC.	33617401	7819800	8R02	1W7Z	5461202	2088
KEY SCALES FORD INC	12855401	7873511	8R02	1W7Z	5461202	2457
GRAND PRAIRIE FORD, INC.	5863901	8411334	8R02	1W7Z	5461202	2852
TOWER FORD INC	146368B	4886400	8R02	1W7Z	5461202	3822
SLOAN MOTORS INC	054742B	3832870	8R02	1W7Z	5461202	3885
CENTRAL EQUIP MGT DI	6968401		8R02	1W7Z	5461202	4621
JACK DEMMER FORD, INC.	274884A	7212600	8R02	1W7Z	5461202	4679
WALNUT CREEK FORD	340731C	9322900	8R02	1W7Z	5461202	5132
SKAGIT RIVER FORD, INC.	9977301	7572000	8R02	1W7Z	5461202	8215
HUB CITY FORD, INC.	6899451	2334500	8R02	1W7Z	5461202	8838
WINNER FORD, INC.	027070A	3784434	8R02	1W7Z	5461202	7242
KEY SCALES FORD INC	13024101	7873511	8R02	1W7Z	5461202	9581
DESERT LINCOLN-MERCURY	9244151	8761922	8R02	1W7Z	5461202	12281

LARSON FORD, INC.

027214C -848 6R02 1W7Z 5461202

200

METRO FORD INC

5972807 7519711 6R02 1W7Z 5461202

4577

SKYLINE FORD SALES, INC.

122217A 3274500 6R02 1W7Z 5461202

268

ESTABROOK MOTOR CO., INC.

19180001 7822641 6R02 1W7Z 5461202

10418

CROSSTOWN FORD SALES, INC.

201958A 8517600 6R02 1W7Z 5461202

21107

UNION PARK FORD, INC.

37200503 6587245 6R02 1W7Z 5461202

2018

322
287
225

342

233
362
77
326
72
59

417

186
47
340

6
88
182

229

423

394
107

2001
2001
2001

2001

2001
2001
2001
2001
2001

2001

2001
2001
2001

2001

2001

2001
2001
2001

322
287
225

342

233
352
77
328
72
58
417
166
47
340
5
88
182
228

423

394
107

•
•
*

*

•
*
•
•
•
•
*

•
•
•
•
•
*

•

•
•
•

1/28/2002	10
8/23/2001	6
11/20/2001	5
4/15/2002	12
1/15/2002	10
11/19/2001	9
11/20/2001	13
7/16/2001	3
7/30/2001	6
9/24/2001	3
2/11/2002	9
4/9/2002	9
10/30/2001	9
8/1/2001	0
1/14/2002	12
10/28/2001	10
8/23/2001	0
5/14/2002	13
10/2/2001	5
9/12/2001	4
8/11/2001	7

8584879
3178224
5728883

8199571

6439870
5824489
5383181
2370680
3168588
3948481
6818078
7895148
4883805
2717484
6318038
4884700
3143251
8893887

5727891

3802806

3304771

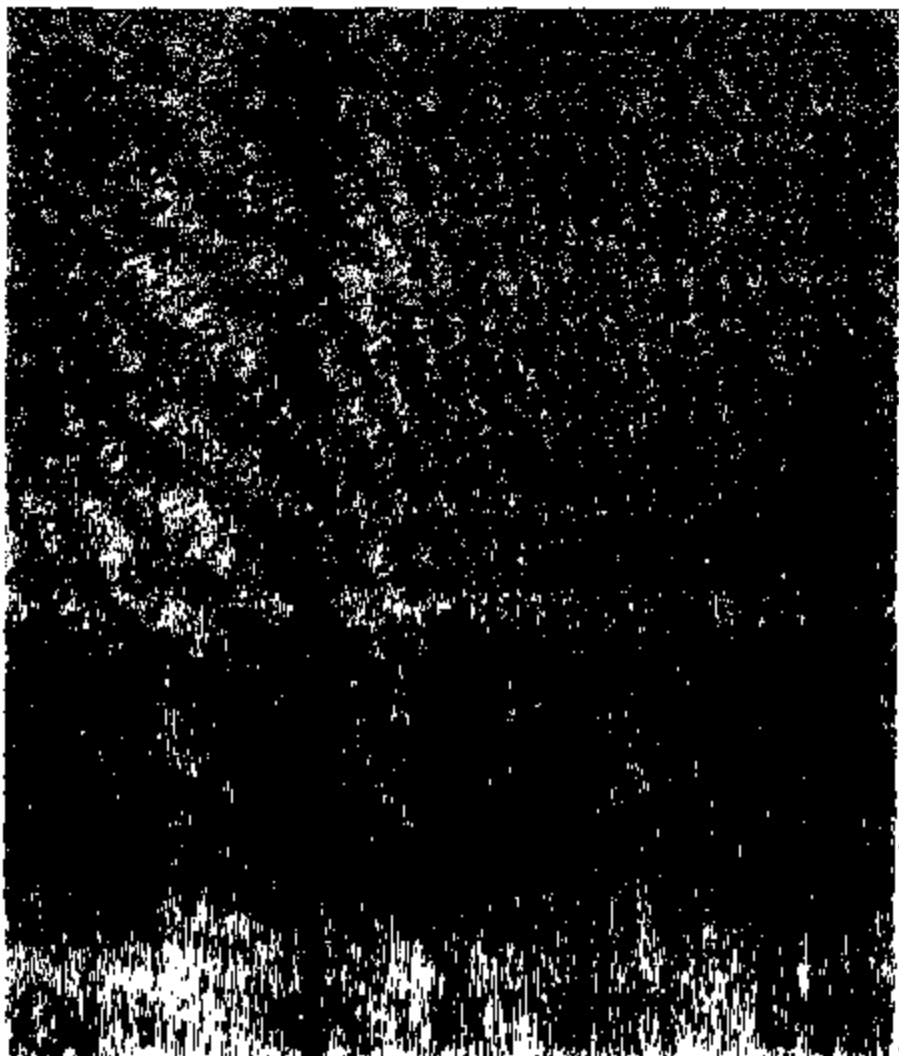
10649
3401
2748

21638

30584
18328
11538
3824
8841
4205
7887
10588
5360
144
10980
11199
1059
8225

8813

4
12845



0331
1359
5695
7714
0395
13017
2584
6236
45251
1304
4638
4892
8199
2519
4416
4546
668
4660
0549
581
45268

REPLACED PASSENGER SIDE SEAT BELT BUCKLE
INSPECTED AND REPLACED ONE (1) SEAT BELT BUCKLE.

INSPECT SEAT BELT OK

39584 INSPECTED SEATBELT PER RECALL OK AT THIS TIME

PERFORMED RECALL

INSPECTED BOTH FRONT SEAT BELT BUCKLE ASSY PASS PER RECALL 01S21A.

CHECK ALL SEAT BELT BUCKLES PER RECALL ALL OK
PERFORMED SAFETY RECALL

1 INSPECT (NO BUCKLE REQUIRED) 01S21A .3 ADMIN .1

PERFORM RECALL 01S21 SEAT BELT BUCKLE CHECKS OK

01S21 INSPECT OK

RECALL 01S21

RECALL INSPECT SEAT BELTS OK

10980 RECALL PERFORM RECALL 01S21 DRIVER SEATBELT BUCKLE PASSED
PASSENGER SEAT BELT BUCKLE ON ORDER

RECALL 01S21 01S21 PASSED

RECALL 01S21

PERFORMED INSPECTION OF SEAT BELTS,OK. AT THIS TIME. AE

RECALL 01S21 PERFORMED RECALL 01S21 INSPECTED AND INSTALLED NEW
SEAT BELT BUCKLES PER RECALL

INSPECT AND REPLACE TWO FRONT SEAT BELTS

COMPLETED FORD RECALL

RECALL 01821 SEAT BELT BUCKLE N99	789
SAFETY RECALL 01S21: CERTAIN 2001 CROWN VICTORIA AND TOWN CAR VEHICLES SEAT BELT BUCKLE RETENTION.	610
	602
01S21 SEAT BELT BUCKLE	559
01S21 SEATBELT BUCKLE	608
CUST STATES INSPECT FOR RECALLS	509
01S21 NAC SEAT BUCKLE	817
01S21 SEAT BELT BUCKLE RECALL	815
SAFETY RECALL 01S21A	*
CUST STATES: TO PERFORM RECALL 01821	215
CUSTOMER STATES PERFORM SAFETY RECALL 01S21 SEAT BELT BUCKLE	317
CAMPAIGN 01821 SEAT BUCKLE	407
01S21 RECALL	314
01821 SEAT BELT RECALL	*
RECALL 01S21 FOR SEAT BELT BUCKLE RETENTION	281
RECALL 01S21	210
PERFORM RECALL 01S21	518
PERFORM RECALL #01821	727
CUSTOMER REQUESTS RECALL 01S21	801
PERFORM SEAT BELT RECALL 01S21	315
SAFETY RECALL 01S21	*

USA	168103
USA	113551
USA	147311
USA	171261
USA	141100
USA	174622
USA	152008
USA	141380
USA	124507
USA	116039
USA	147723
USA	124081
USA	153080
USA	182077
USA	152793
USA	152793
USA	113551
USA	124081
USA	183000
USA	113551
USA	171816

01S21

USA

01S21

USA

01S21

USA

01S21

USA

01S21

USA

01S21

USA

01S21

USA

01S21

USA

01S21

USA

01S21

USA

01S21

USA

01S21

USA

01S21

USA

01S21

USA

01S21

USA

01S21

USA

01S21

USA

01S21

USA

01S21

USA

01S21

USA

01S21

USA

V00

V00

V00

V00

V00

V00

V00

V00

V00

V00

V00

V00

V00

V00

V00

V00

V00

V00

V00

V00

V00



2FAFP71W41X1
2FAFP71W81X1
2FAFP71W81X1

2FAFP71W31X1

2FAFP71W81X1

2FAFP71W31X1
2FAFP74W31X1
2FAFP71W41X1
2FAFP74W31X1
2FAFP74W41X1

2FAFP71W01X1

2FAFP71W91X1
2FAFP74W81X1
2FAFP71W31X1

2FAFP74WX1X
2FAFP74W21X1
2FAFP71W91X1

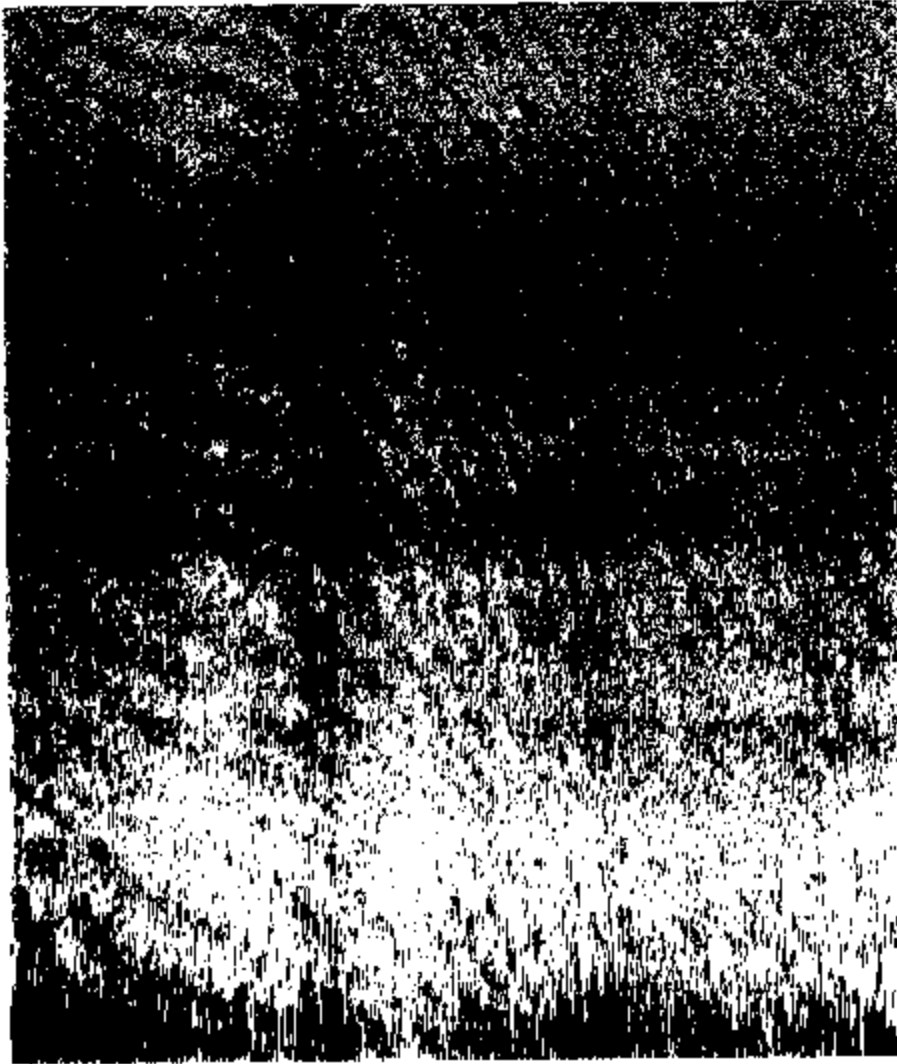
2FAFP71W81X1

2FAFP71W01X1

2FAFP71W11X1

2FAFP74W01X1





C/FB
C/FB
C/FB
C/FB
C/FB
C/FB
C/FB
C/FB
C/FB
C/FB
C/FB
C/FB
C/FB
C/FB
C/FB
C/FB
C/FB
C/FB
C/FB
C/FB

CIAB

CIAB

CIAB

CIAB

CIAB

CIAB

CI/AI

CIAB

CI/AI

CI/AI

CIAB

CIAB

CI/AI

CIAB

CI/AI

CI/AI

CIAB

CIAB

CIAB

CIAB

CI/AI

C/B

C/B

C/B

C/B

C/B

C/B

C/B

C/B

C/B

C/B

C/B

C/B

C/B

C/B

C/B

C/B

C/B

C/B

C/B

C/B

C/B

AW	4/11/2001
AW	2/21/2001
AW	4/3/2001
AW	4/27/2001
AW	3/29/2001
AW	2/27/2001
AW	8/17/2000
AW	4/11/2001
AW	2/8/2001
AW	4/17/2001
AW	5/1/2001
AW	5/14/2001
AW	12/13/2000
AW	4/30/2001
AW	1/11/2001
AW	1/12/2001
AW	5/1/2001
AW	3/6/2001
AW	4/24/2001
AW	5/7/2001
AW	1/12/2001

4/25/2001

3/15/2001

7/8/2001

5/8/2001

4/18/2001

3/15/2001

11/20/2000

5/18/2001

2/23/2001

6/28/2001

5/28/2001

7/20/2001

2/20/2001

8/2/2001

1/27/2001

1/27/2001

9/10/2001

4/20/2001

6/6/2001

5/18/2001

1/27/2001

BROOKDALE FORD, INC.

MATTHEWS SALES CO

BILL COLLINS FORD INC

MONARCH FORD

KAYSER FORD INC

FOOTHILLS LINCOLN-MERCURY

TEXAS MOTORS FORD

BELOIT FORD LINC-MERC, INC.

HERTZ RAC - TAMPA

C & C FORD SALES, INC.

PAUL HARVEY FORD SALES, INC.

DON REID FORD, INC.

DAVE SINCLAIR FORD, INC.

VILLAGE FORD OF LEWISVILLE, IN

RON-CARTER FORD, INC.

JORDAN FORD, LTD.

TRI-LAKES FORD/MERCURY, INC.

AUTOWAY FORD

FRONTIER FORD-LINC-MERC, INC.

MACEDON FORD INC

HERTZ RAC - LAS VEGAS

16688501
17685201
25634603

8867840

073358C

318385A
18881403
8408060
32687401
16437201

8083101

1438361
23855803
8814752

018524E
5379853
074873A

12832101

2782003

041473A
33748401

6615500
6444700
4588560

6823800

2780200

3248200
2484821
3884500
"
8743600

2888814

8447111
8822800
"
3318111
8533873
8815560

3233400

2877373

8884131
"

140
224
222

87

72

101
15
141
134
150

123

218
9
142
147
17
54
69

125

116
23

AAD	\$25
AAB	\$40
AAD	\$40
AAD	\$40
AAD	\$25
AAD	\$40
AAB	\$25
AAD	\$40
AAC	\$40
AAD	\$40
AAD	\$25
AAD	\$25
AAC	\$40
AAD	\$40
AAB	\$40
AAB	\$40
AAD	\$40
AAD	\$25
AAB	\$40
AAD	\$25
AAB	\$40

41	7/3/2001
42	8/7/2001
42	12/8/2001
42	7/11/2001
42	8/11/2001
42	8/21/2001
42	7/2/2001
42	6/20/2001
42	7/11/2001
42	8/18/2001
42	1/28/2002
41	3/20/2002
42	10/8/2001
41	7/20/2001
42	1/14/2002
42	12/28/2001
42	8/18/2001
42	5/22/2002
42	11/1/2001
82	11/23/2001
42	3/18/2002

3
5
8

3
5
7
8
4
5
2

8
9
8
0

12
12
1
14

6
7
14

2374347
2808737
6811848

2450772

3851093
3835009
2300701
3125084
2878248
3018984

7204744

8012835
4481538
2689221

8318037
8042445
3703808
8832007

5727862

5488340
7484179

978

3012

2769

62

20790

12068

7156

2828

7849

3456

7411

10139

6021

141

10980

11200

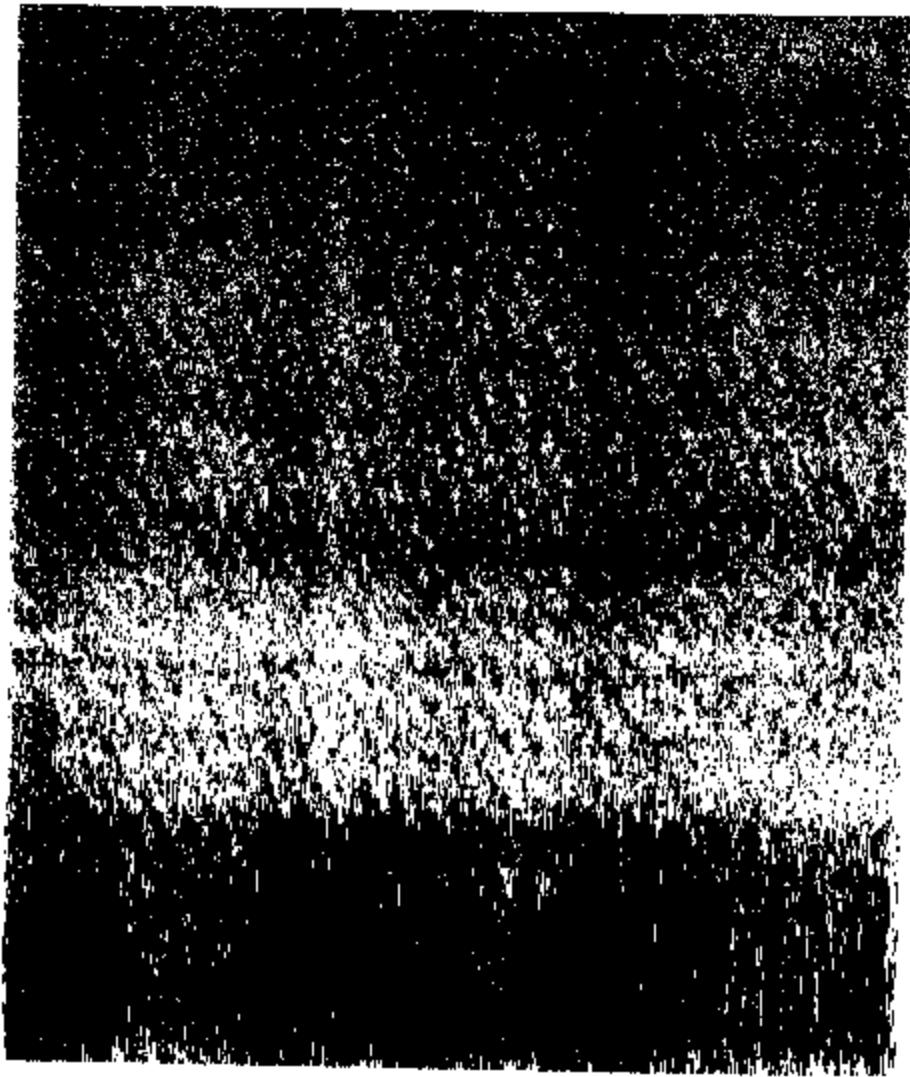
1060

6234

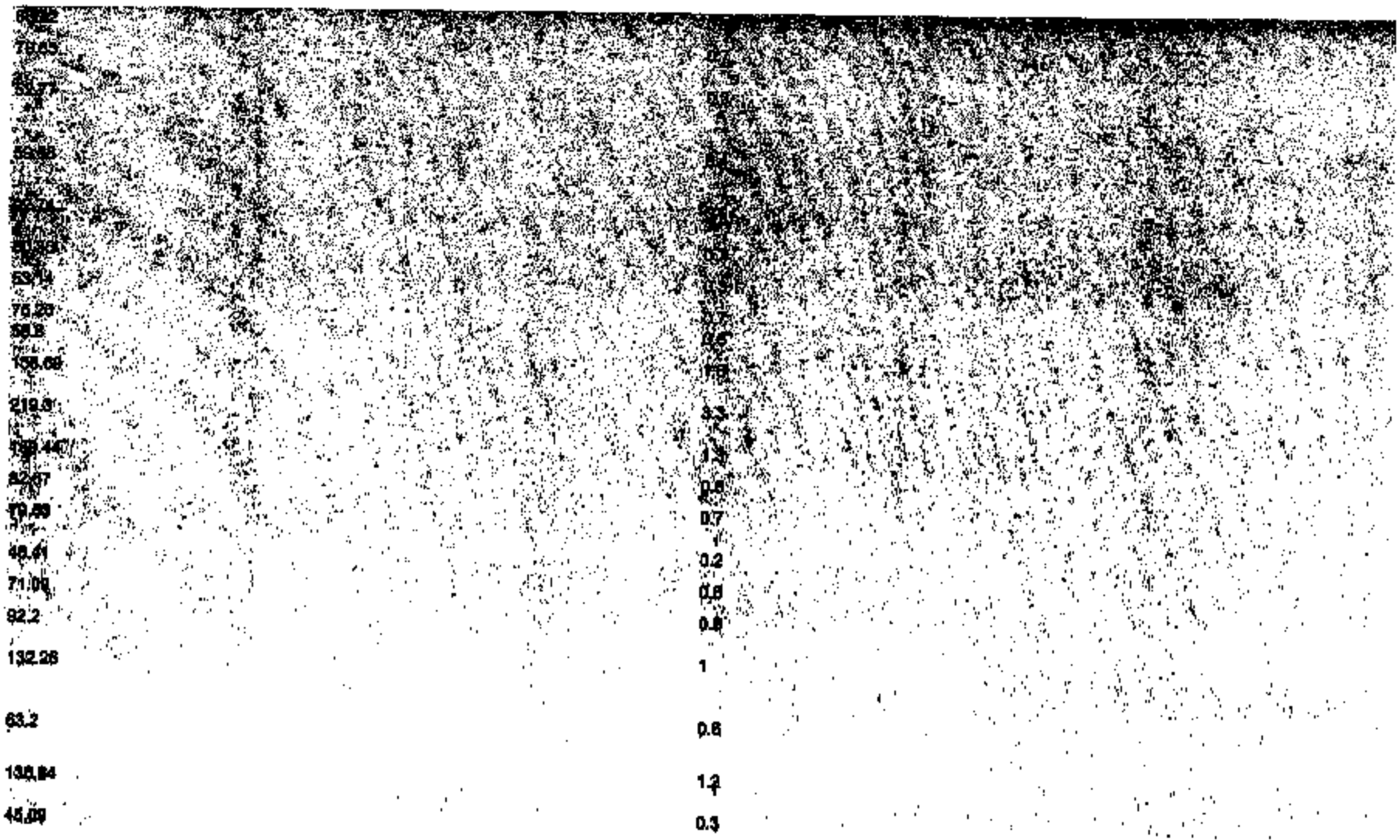
6613

10

27301



NO04-011 13399



1084-011 13358

9331

1369

5995

7714

6395

13017

2584

6235

45260

1304

49149

4882

8109

2518

4418

4548

696

4850

8549

552

2097

.

*

*

■

.

.

.

.

.

.

*

.

.

.

*

.

.

*

.

.

.

11001

11001

11001

11001

11001

11001

11001

11001

11001

11001

11001

11001

11001

11001

11001

11001

11001

11001

11001

11001

11001

1 REPLACE DRIVERS SEAT BELT

REPLACED DRIVERS FRONT SEAT BELT BUCKLE ASSEMBLY.

REPLACED SEAT BELT BUCKLE LEFT SIDE

LATCH INOP VERIFY CONCERN SEAT BELT DOES NOT LATCH AT TIMES REPLACED
DRIVERS

20796 0.5 DIAGNOSE, HAD TO REMOVE L F SEAT TO TAKE SEAT BELT OUT, STUD WAS CROSS
THREADED, RE TAP STUD AND INSTALL NEW BUCKEL, TURN IN OLD SEAT BELT BUCKEL FOR WF.

REPLACED SEAT BELT BUCKLE.

REPLACED PASSANGERS FRONT SEAT BELT BUCKLE

SEAT BELT DOES NOT STAY BUCKLED R&R BUCKLE RECHECK GOOD

R&R DRIVERS SEAT BELT LATCH

SEAT BELTS RELEASE INTERMITTENDY, SEAT BELT LOOSE REPLACE BOTH FRONT SEAT BELTS S40
3461202 42

CHECKED FOUND BUCKLE ON ONE BELT HARD TO LOCK AND THE OTHER THE TENSION IS NOT
HOLDING REPLACED BOTH

REPLACE SEATBELTS BINDNG

REPLACE SEAT BELT BUCKLE

LATCH INOP SEATBELT ASSEMBLY FRONT REPLACE

10982 PASSENGER FRONT SEAT BELT BUCKLE DOES NOT HOLD REPLACE RIGHT FRONT SEAT BELT
BUCKLE AND TEST O K

NOT OPERATING PROPERLY REMOVE AND REPLACE SEATBELT BUCKLE

VERIFIED BOTH FRONT SEATBELTS VERY DIFFICULT TO LATCH REPLACED BOTH BUCKLE
ASSEMBLIES

REPLACED BOTH FRT SEAT SEAT BUCKLES. NEITHER WOULD LATCH.

INTERNAL PROBLEM WITH SEAT BELT VERIFIED CUSTOMERS CONCERNS AND INSTALLED NEW
SEAT BELT BUCKLE

NEW YORK STATE POLICE SEAT BELT REPLACEMENT. HISTORY ON VEHICILE SHOWS SEATBELTS
REPLACED AT ANOTHER DEALERSHIP UNDER 01921. SEATBELTS NEVER REPLACED BEFORE. ROB

SOURCE TO COVER SEATBELT REPLACEMENT UND

R&R SEAT BELT BUCKLE

INSTALL SP. ORDER SHOULDER BELT, WILL NOT STAY LATCHED
CHECK DRIVERS FRONT SEAT BELT WILL NOT STAY BUCKLED.
CUST STATES SINCE PREVIOUS RO DRIVER SEAT BELT HAS COME UN BUCKLED
SEVERAL TIMES

CUST STATES DRIVERS SEAT BELT WILL NOT LATCH AT TIMES,

L F SEAT BELT WONT BUCKEL

CUSTOMER STATES DRIVERS SEAT BELT WILL NOT LATCH CORRECTLY
CHECK. PASSENGER FRONT SEAT BELT WILL NOT LATCH AT TIMES.... SOP HERE
DRIVER SIDE SEAT BELT DOES NOT STAY BUCKLED PART ORDERED
D S SEAT BELT W NOT STAY LATCHED
INSTALL SOP PART

FRONT SEAT BELTS NOT OPERATING PROPERLY

SEAT BUCKLES CUST STATES THE DRIVERS SEAT BUCKLE COME UNLATCHED
WILL COME UNLATCHED INTER
CUST SAYS RIGHT FRONT SEATBELT WONT LATCH
S40 CHECK DRIVERS SEAT BELT....WONT STAY LATCHED....POPS OPEN WHILE
DRIVING....01821
PASSENGER SIDE FRONT SEAT BELT BUCKLE DOES NOT HOLD VERY WELL,
INTERMITTENTLY THE SEAT BELT WILL UNBUCKLE
DRIVER SEAT BELT NOT LATCHING

FRONT SEATBELTS WILL NOT CLICK IN

S25 SEAT BELT NOT WORKING PROPERLY, SOP S IN SEE HISTORY RO# 125261

RECENTLY INSTALLED SEAT BELT WILL NOT BUCKLE

NEW YORK STATE POLICE CAR SEATBELT REPLACEMENT AS PER ROB SOURELLE
SEAT BELT BUCKLE LATCHES PART TIME

ER P01 AUTH F1378

ROB-011 13364

763
810
502

558
808
608
817
815
216

407
314

281
210
518
727

601
607
304

USA
USA
USA

USA
USA
USA
USA
USA
USA

USA
USA
USA
USA

USA
USA
USA

USA
USA
USA

158103

2

113551

2

147311

2

171281

2

141100

E84

174522

E84

152008

1

141380

2

124807

2

116038

2

147723

2

124081

1

183080

1

152077

2

152783

2

152798

2

113551

2

124081

E84

183000

2

113551

2

171818

E84

b
c
c

a
a
a
a
b
b
c
a
c
a
b
b
c
a
a
a
a

a
a
a

V05
V05
V05

V05
V05
V05
V05
V05
V05
V05
V05
V05
V05
V05
V05
V05
V05

V05
V05
V05
V05

2FAFP71W41X

2FAFP71W81X

2FAFP71W81X

2FAFP71W31X

2FAFP71W81X

2FAFP71W31X

2FAFP74W31X

2FAFP71W41X

2FAFP74W31X

2FAFP74W41X

2FAFP71W01X

2FAFP71W81X

2FAFP74W81X

2FAFP71W31X

2FAFP74WX1X

2FAFP74W21X

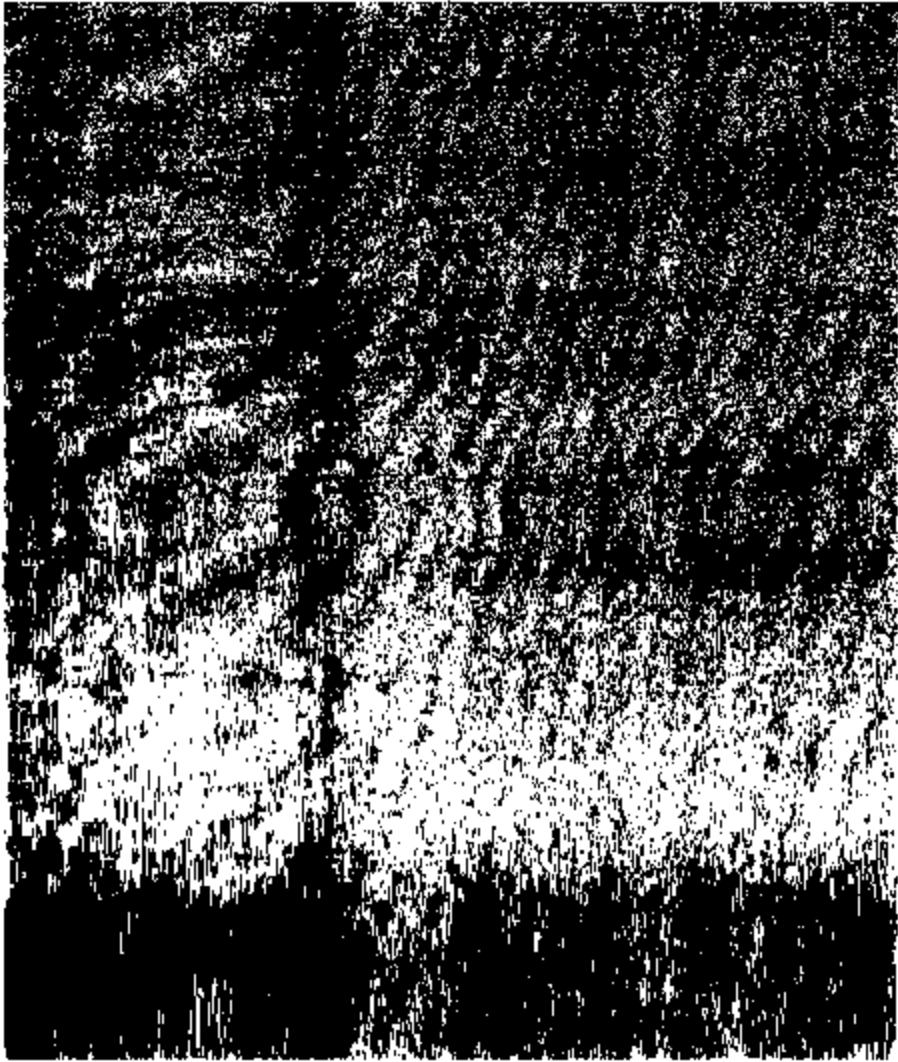
2FAFP71W81X

2FAFP71W81X

2FAFP71W01X

2FAFP71W11X

2FAFP74W01X



C/FB
C/FB
C/FB
C/FB
C/FB
C/FB
C/FB
C/FB
C/FB
C/FB
C/FB
C/FB
C/FB
C/FB
C/FB
C/FB
C/FB
C/FB
C/FB
C/FB
C/FB
C/FB
C/FB
C/FB