

RQ04-011
FORD
APRIL 26, 2005
REQUEST 8
PART 2 OF 6
BOOKS 32 OF 43

TBL11Exped-NavalTermcall_COND_CD	Recall Month	TBL11Exped-NavalTermcall_RFR_DT	TBL01Exped-NavalTermcall_TRF_W@D	TBL01Exped-NavalTermcall_CLM_KEY	TBL01Exped-NavalTermcall_MLGE
*	6/30/2001	6/28/2001	7	3842871	2788
*	6/30/2001	6/18/2001	4	3719486	11589
*	6/6/2001	6/1/2001	8	2676868	8278
*	7/31/2001	7/25/2001	0	2667315	2
*	7/31/2001	7/18/2001	0	2478128	6
*	12/31/2001	12/7/2001	9	5733971	5355
*	7/31/2001	7/17/2001	0	2425810	0
*	8/31/2001	8/11/2001	11	2728899	8270
*	10/31/2001	10/6/2001	6	4328743	18014
*	9/30/2001	9/25/2001	4	4012883	6200
*	11/30/2001	11/12/2001	8	5172349	7007
*	8/31/2001	8/7/2001	8	2806188	7138
*	8/31/2001	8/7/2001	8	2837283	4075
*	7/31/2001	7/17/2001	0	2607682	4
*	9/30/2001	9/14/2001	8	3641780	5868
*	10/31/2001	10/1/2001	6	4072367	7731
*	10/31/2001	10/26/2001	4	4766801	6677
*	8/31/2001	8/17/2001	2	5387489	2108
*	7/31/2001	7/18/2001	1	3123084	817
*	7/31/2001	7/20/2001	7	2477245	11652
*	11/30/2001	11/7/2001	12	8224224	14318

RO04-011 11883

*	10/31/2001	10/4/2001	7	4348033	5371
*	8/31/2001	8/26/2001	2	8402571	5498
*	10/31/2001	10/3/2001	9	4212813	18991
*	10/31/2001	10/29/2001	3	4828303	2445
*	7/31/2001	7/17/2001	0	2383252	10
*	7/31/2001	7/17/2001	0	2383252	10
*	7/31/2001	7/17/2001	0	2383252	10
*	7/31/2001	7/17/2001	0	2383252	10
*	8/30/2001	8/24/2001	11	4548097	12351
*	8/31/2001	8/15/2001	1	3588214	688
*	8/30/2001	8/28/2001	11	4048218	11772
*	10/31/2001	10/29/2001	8	4458848	8873
*	8/31/2001	8/27/2001	8	4081235	7681
*	10/31/2001	10/29/2001	5	4883608	9100
*	8/31/2001	8/18/2001	4	3088547	3645
*	8/30/2001	8/8/2001	7	3888978	8158
*	10/31/2001	10/29/2001	5	4248588	5250
*	7/31/2001	7/20/2001	0	2478219	10
*	11/30/2001	11/3/2001	11	4928738	14844
*	7/31/2001	7/28/2001	0	2884382	10
*	12/31/2001	12/24/2001	10	8908968	24898
*	9/30/2001	9/19/2001	3	5768352	3871
*	11/30/2001	11/27/2001	8	5488294	5348
*	10/31/2001	10/20/2001	13	4558327	9349

*	7/31/2001	7/18/2001	0	540400	6
*	8/31/2001	8/21/2001	7	3287386	10409
*	11/30/2001	11/12/2001	12	5142304	20806
*	10/31/2001	10/17/2001	5	4482526	6244
*	5/31/2001	5/29/2001	0	3372405	10
*	8/31/2001	8/3/2001	4	4884725	10680
*	11/30/2001	11/19/2001	8	5187708	16787
*	7/31/2001	7/24/2001	6	5490104	7204
*	8/31/2001	8/14/2001	0	3077845	28
*	8/31/2001	8/1/2001	8	3218206	6420
*	10/31/2001	10/9/2001	8	4210786	8822
*	10/31/2001	10/9/2001	5	4210786	8822
*	10/31/2001	10/9/2001	2	4261344	1840
*	8/31/2001	8/16/2001	4	3028636	5208
*	8/31/2001	8/1/2001	8	2788451	11880
*	1/31/2002	1/18/2002	8	8372820	10758
*	7/31/2001	7/18/2001	0	2724849	137
*	10/31/2001	10/16/2001	8	4420306	5880
*	10/31/2001	10/9/2001	8	4384235	6080
*	7/31/2001	7/28/2001	1	2838810	185
*	11/30/2001	11/1/2001	4	6026338	8378
*	8/31/2001	8/15/2001	10	368884	6476
*	8/31/2001	8/21/2001	2	3291306	6200
*	7/31/2001	7/15/2001	8	5401343	7380
*	12/31/2001	12/19/2001	6	8270823	7888
*	8/31/2001	8/24/2001	4	3202883	8445
*	7/31/2001	7/28/2001	0	3830761	1
*	7/31/2001	7/28/2001	8	2713081	13300

*	7/31/2001	7/31/2001	0	2811891	1
*	8/31/2001	8/30/2001	7	3247580	7638
*	9/30/2001	9/27/2001	4	4022137	7033
*	11/30/2001	11/9/2001	13	6211378	24948
*	10/31/2001	10/22/2001	8	4718868	4863
*	8/31/2001	8/27/2001	1	3251297	343
*	7/31/2001	7/17/2001	0	2392122	12
*	10/31/2001	10/1/2001	1	4053644	2058
*	10/31/2001	10/29/2001	1	8018912	1023
*	11/30/2001	11/1/2001	8	4852251	10748
*	7/31/2001	7/21/2001	4	2782282	4839
*	7/31/2001	7/25/2001	0	2803861	12
*	8/31/2001	8/17/2001	0	3049082	25
*	9/30/2001	9/17/2001	1	3722747	2810
*	8/31/2001	8/13/2001	8	3422884	17788
*	8/31/2001	8/29/2001	1	3353881	1415
*	8/31/2001	8/1/2001	0	2718383	49
*	10/31/2001	10/2/2001	3	4212538	1483
*	7/31/2001	7/19/2001	0	2447787	59
*	11/30/2001	11/9/2001	6	5202489	8231
*	7/31/2001	7/20/2001	0	2462045	8
*	8/30/2001	8/9/2001	11	2434308	28780
*	12/31/2001	12/27/2001	3	2903823	12621
*	8/31/2001	8/7/2001	4	2818828	1233
*	8/31/2001	8/13/2001	3	3080386	3016

*	7/31/2001	7/30/2001	0	2479875	18
*	7/31/2001	7/31/2001	2	2888828	2028
*	10/31/2001	10/30/2001	0	4769905	213
*	7/31/2001	7/29/2001	0	2829041	2
*	7/31/2001	7/17/2001	0	2342871	15
*	10/31/2001	10/28/2001	13	4802901	14386
*	7/31/2001	7/27/2001	3	3153921	4012
*	8/31/2001	8/29/2001	1	3088996	2
*	8/30/2001	8/24/2001	4	3862896	5480
*	8/31/2001	8/29/2001	0	2118991	17
*	8/31/2001	8/16/2001	0	3050852	18
*	10/31/2001	10/2/2001	6	4168823	5811
*	7/31/2001	7/16/2001	0	2942763	27
*	12/31/2001	12/10/2001	1	5701386	1527
*	9/30/2001	9/14/2001	1	5725450	431
*	9/30/2001	9/13/2001	7	3823005	8132
*	7/31/2001	7/19/2001	0	2815375	81
*	10/31/2001	10/1/2001	7	4051880	10605
*	8/30/2001	8/7/2001	4	3528474	4605
*	7/31/2001	7/16/2001	0	2373014	90
*	11/30/2001	11/25/2001	3	5880750	4831
*	10/31/2001	10/1/2001	6	4151445	5094
*	8/31/2001	8/13/2001	7	3180603	3882
*	9/30/2001	9/26/2001	6	3947369	5880
*	8/31/2001	8/14/2001	3	3110985	81
*	10/31/2001	10/6/2001	1	4408675	496

*	6/30/2001	6/22/2001	4	3576365	3666
*	6/31/2001	6/21/2001	3	3278222	2060
*	6/31/2001	6/30/2001	4	3391623	4512
*	7/31/2001	7/26/2001	4	2749171	4236
*	1/31/2002	1/18/2002	11	6429626	25840
*	8/31/2001	8/30/2001	1	5405103	163
*	8/31/2001	8/2/2001	2	2728091	1997
*	7/31/2001	7/18/2001	0	3177013	10
*	10/31/2001	10/9/2001	6	4415927	10054
*	11/30/2001	11/28/2001	9	6532508	10654
*	8/31/2001	8/21/2001	6	2102865	14841
*	7/31/2001	7/20/2001	2	2497334	2115
*	9/30/2001	9/11/2001	3	3722148	3341
*	10/31/2001	10/23/2001	6	4727660	4710
*	7/31/2001	7/16/2001	0	2366779	7
*	9/30/2001	9/11/2001	7	5713227	7774
*	8/31/2001	8/14/2001	6	2976285	8123
*	10/31/2001	10/4/2001	3	4287632	5373
*	7/31/2001	7/23/2001	0	2455625	15
*	9/30/2001	9/28/2001	0	4091713	10
*	10/31/2001	10/16/2001	7	4432645	4901
*	7/31/2001	7/20/2001	0	2436885	60
*	10/31/2001	10/2/2001	4	4105321	2989
*	7/31/2001	7/30/2001	2	2618816	2183
*	7/31/2001	7/17/2001	3	2261314	6561
*	7/31/2001	7/17/2001	0	2346599	50

*	7/31/2001	7/27/2001	0	2689547	33
*	8/31/2001	8/23/2001	4	3189041	7586
*	7/31/2001	7/31/2001	0	2851486	0
*	8/31/2001	8/8/2001	0	4338242	3841
*	11/30/2001	11/8/2001	0	8001366	10890
*	8/31/2001	8/29/2001	0	3276695	6
*	8/30/2001	8/24/2001	3	4327433	6816
*	8/30/2001	8/19/2001	0	3582228	11490
*	8/31/2001	8/18/2001	4	3937770	11478
*	11/30/2001	11/9/2001	5	6028509	8106
*	7/31/2001	7/31/2001	0	2987174	6041
*	12/31/2001	12/17/2001	0	5790729	13743
*	8/31/2001	8/2/2001	5	3721992	16986
*	8/31/2001	8/27/2001	1	3242858	148
*	9/30/2001	9/12/2001	4	3905987	4677
*	8/31/2001	8/9/2001	0	2773880	17
*	7/31/2001	7/24/2001	0	2487594	193
*	8/31/2001	8/1/2001	5	2718484	4803
*	8/31/2001	8/17/2001	5	3280765	8112
*	8/31/2001	8/2/2001	6	2715997	11721
*	10/31/2001	10/15/2001	5	4848422	8012
*	10/31/2001	10/18/2001	6	4412300	1859
*	10/31/2001	10/15/2001	2	4374084	3482
*	7/31/2001	7/17/2001	0	2411410	8
*	8/31/2001	8/9/2001	4	2855487	4181
*	7/31/2001	7/28/2001	2	2584599	4361
*	7/31/2001	7/18/2001	0	2471403	21

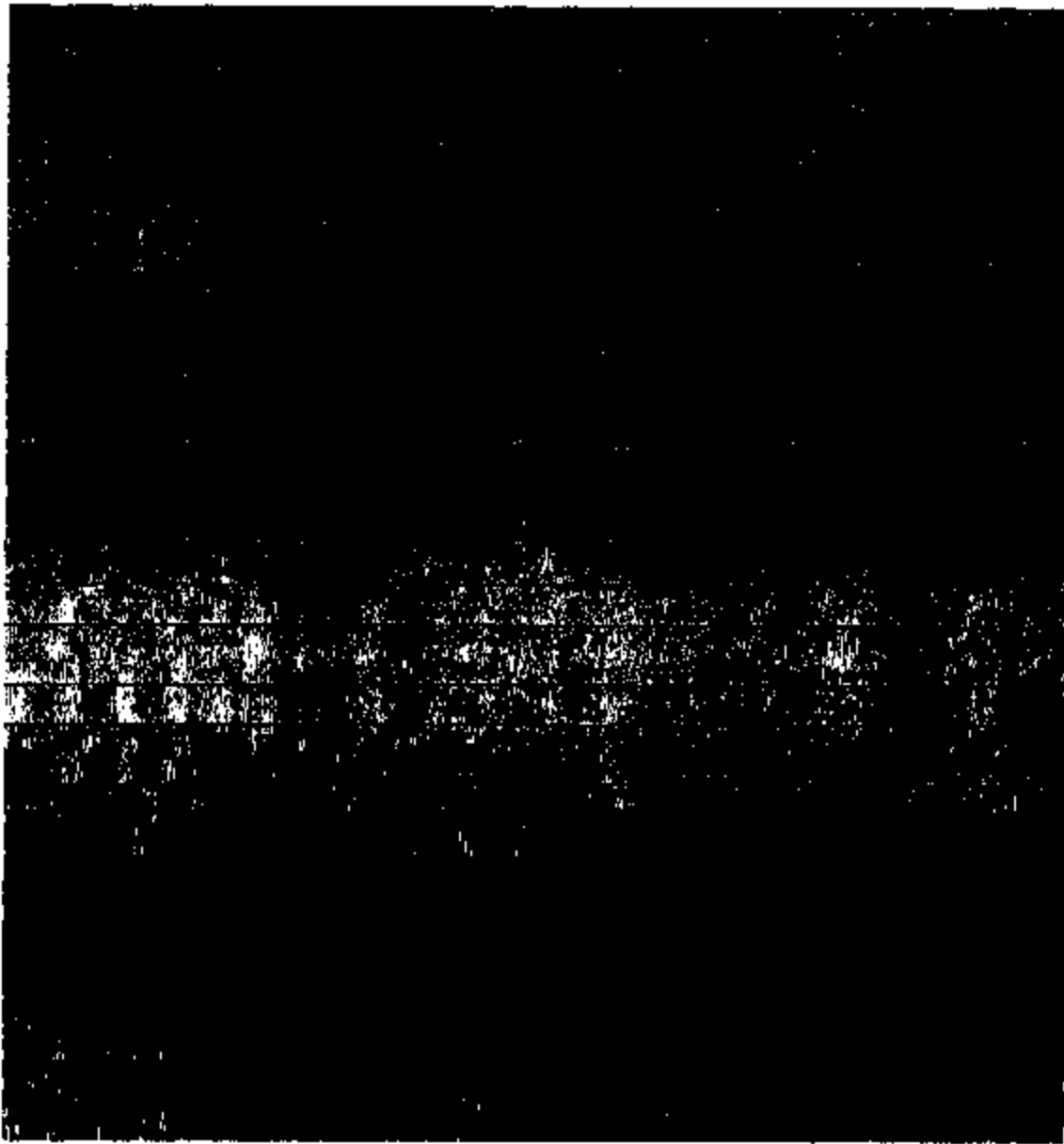
*	8/31/2001	8/16/2001	1	2980484	4238
*	9/30/2001	9/21/2001	8	3841435	6786
*	8/31/2001	8/20/2001	4	3048808	3131
*	8/31/2001	8/11/2001	0	2886480	24
*	10/31/2001	10/17/2001	8	4481724	7181
*	9/30/2001	9/14/2001	1	2654038	119
*	10/31/2001	10/12/2001	12	4376802	2360
*	8/31/2001	8/2/2001	4	2718886	4081
*	10/31/2001	10/2/2001	4	4144858	5738
*	8/31/2001	8/8/2001	3	2814878	2436
*	7/31/2001	7/20/2001	0	2448841	8
*	8/30/2001	8/28/2001	8	3854088	14417
*	10/31/2001	10/9/2001	8	4244873	7818
*	7/31/2001	7/18/2001	0	2474488	21
*	12/31/2001	12/18/2001	10	5813884	14883
*	8/31/2001	8/8/2001	3	2818128	8473
*	11/30/2001	11/8/2001	8	6221748	10278
*	9/30/2001	9/17/2001	4	3715068	8335
*	9/30/2001	9/11/2001	11	4864281	22889
*	11/30/2001	11/16/2001	9	8138880	28307
*	11/30/2001	11/2/2001	8	4818888	12281
*	8/31/2001	8/8/2001	1	2888243	18
*	11/30/2001	11/27/2001	7	6388628	8480
*	10/31/2001	10/28/2001	8	4781118	8828
*	7/31/2001	7/31/2001	5	2884848	8108
*	7/31/2001	7/31/2001	3	2871838	4808
*	10/31/2001	10/4/2001	2	4218080	2885
*	11/30/2001	11/7/2001	15	8082721	38888

*	7/31/2001	7/24/2001	-1	2438893	2424
*	12/31/2001	12/27/2001	8	5884174	4383
*	5/31/2001	5/15/2001	9	3028576	11885
*	3/28/2002	2/12/2002	12	5866363	24945
*	8/31/2001	8/22/2001	4	3153878	5478
*	8/31/2001	8/9/2001	6	2907805	11747
*	8/31/2001	8/21/2001	4	3251858	5001
*	7/31/2001	7/19/2001	0	2484742	25
*	5/31/2001	5/14/2001	4	3115073	4281
*	8/31/2001	8/29/2001	8	3274038	6250
*	8/30/2001	8/25/2001	3	3074466	3245
*	8/31/2001	8/14/2001	5	3082290	8208
*	8/31/2001	8/6/2001	9	3887243	7968
*	10/31/2001	10/19/2001	6	4485824	5731
*	8/31/2001	8/23/2001	0	2973191	8
*	7/31/2001	7/23/2001	0	2853472	9
*	8/31/2001	8/8/2001	8	2884827	13830
*	7/31/2001	7/30/2001	7	2800736	11481
*	8/31/2001	8/16/2001	4	3628333	8471
*	10/31/2001	10/23/2001	3	4828914	8268
*	8/31/2001	8/23/2001	1	3191489	600
*	8/31/2001	8/22/2001	5	3803173	18172

TBL01Eqped-Navy/Amson/J_DLR_CD

210
5092
18046
8542
8585
11896
11896
20501
20321
20323
20323
865
1895
1898
2557
2824
4223
4368
5401
5440
5401

FORM-011 11872



5412

5413

5430

5517

5453

5455

5455

5455

5455

5512

5513

5520

5524

5538

5534

5545

5485

5583

5579

7737

7728

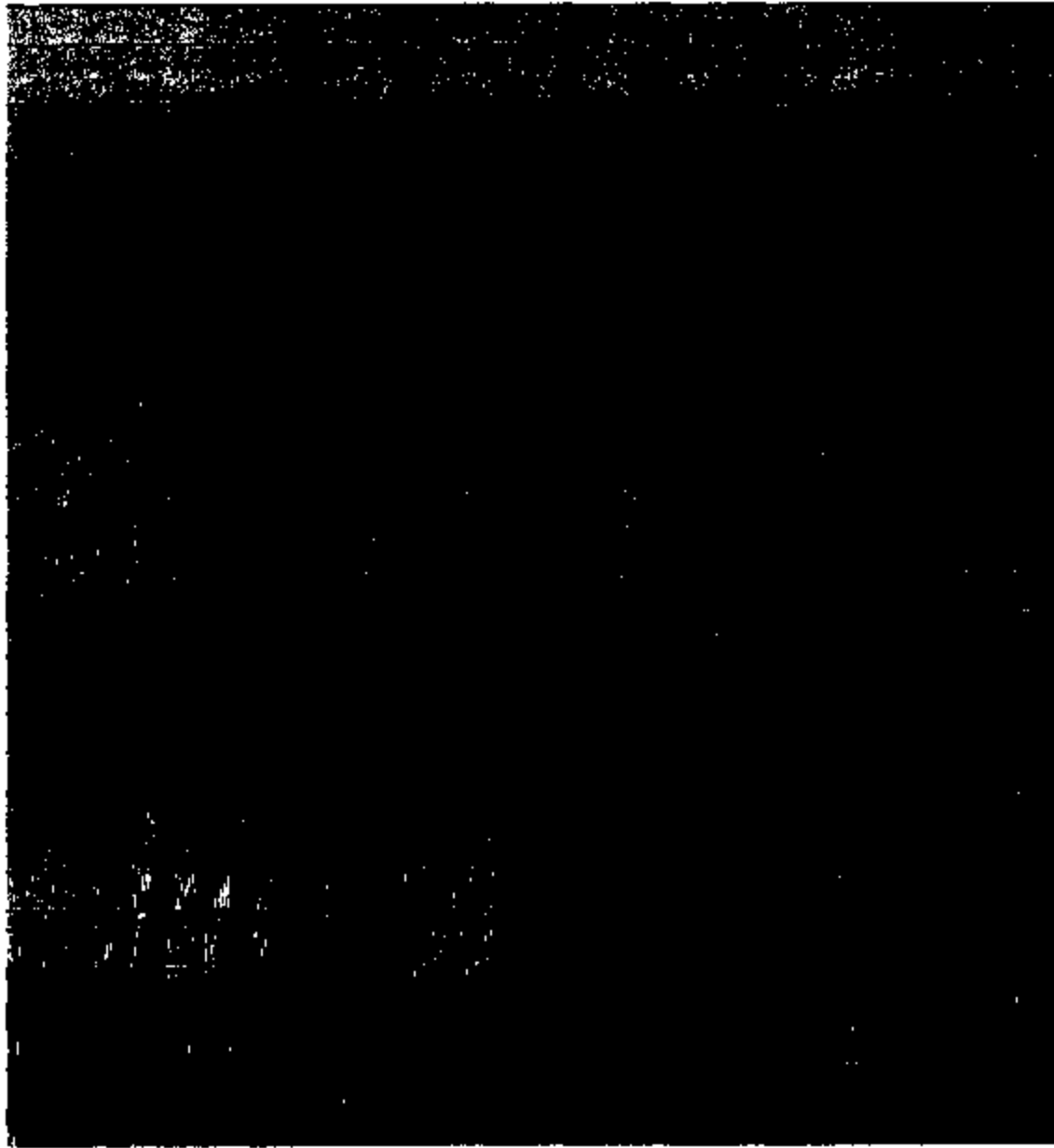
7742

7782

7800

7823

ROAD-011 11873



10277

11043

10348

3278

11050

40248

8880

68112

461

4892

4820

4820

4822

4822

4864

4892

4900

4950

4900

10021

10021

10838

11038

11838

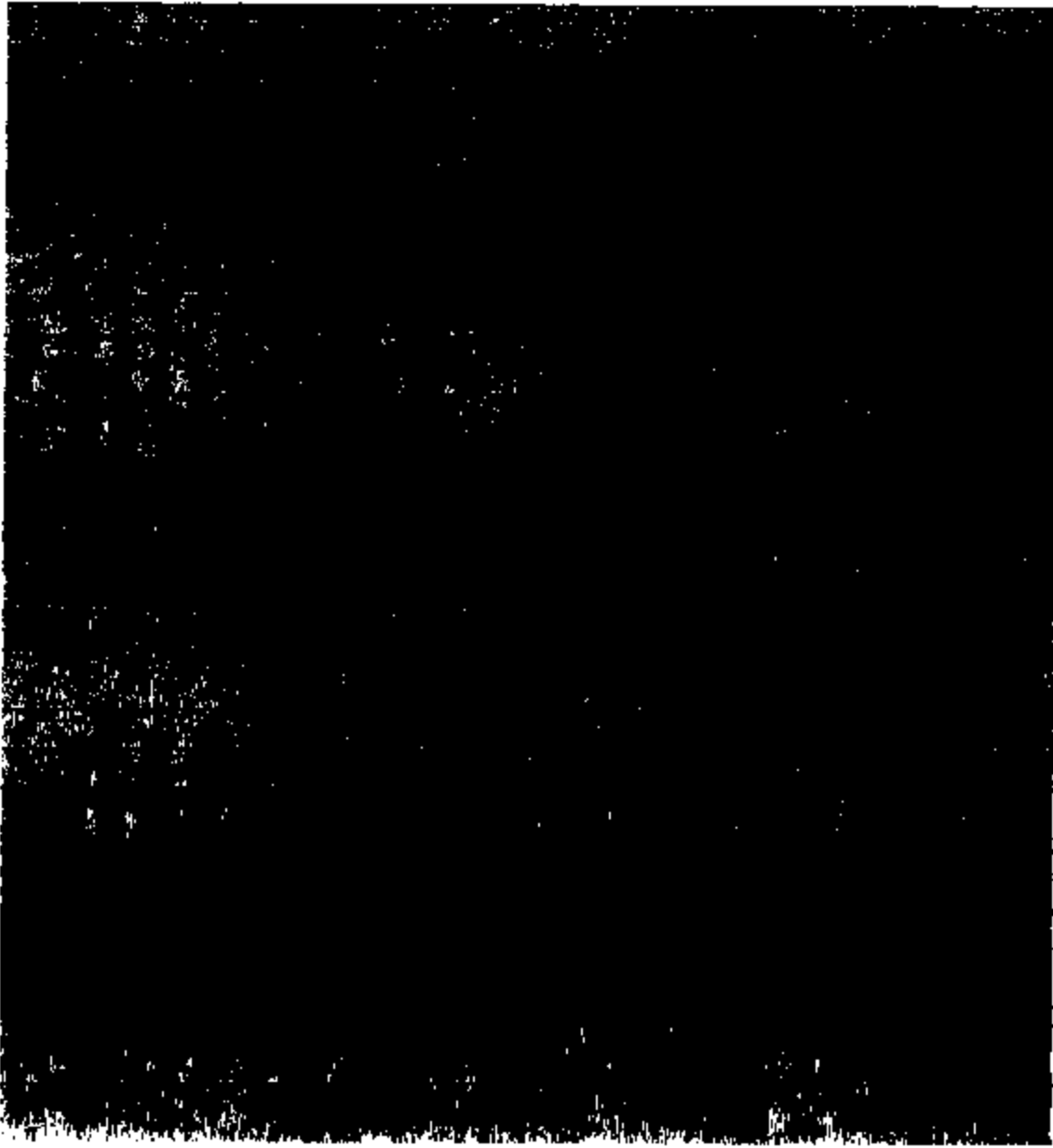
11858

243

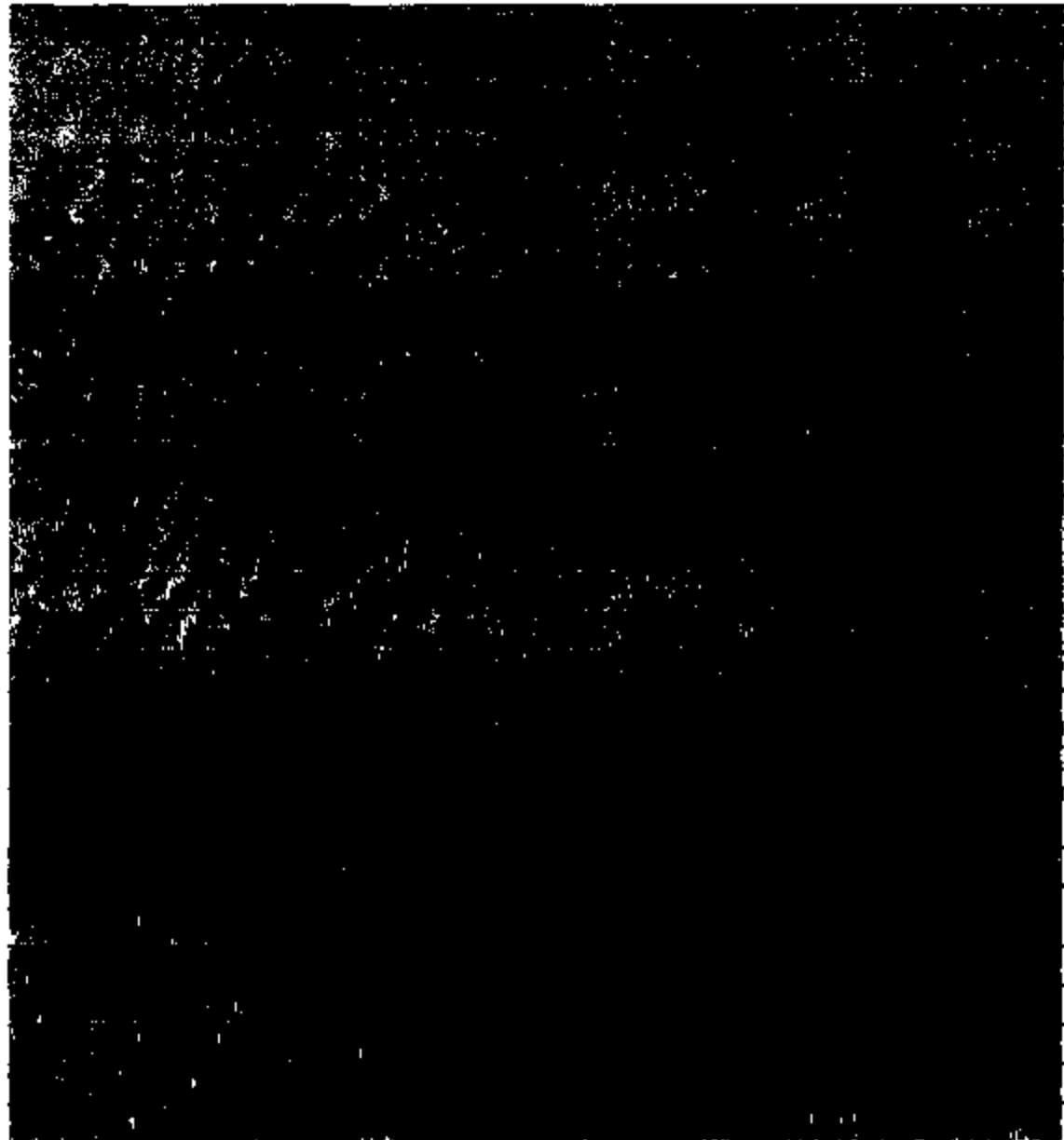
3261

402

ROD-011 11874



406
472
487
588
3873
3874
4827
10187
10188
7708
12920
18021
1802
8007
1738
11620
1802
8408
8888
12847
8440
8480
8488
8481
8831



6532

8068

1071

16381

2009

8053

8148

10810

2884

3050

3078

8803

8570

8734

10011

10011

10485

8178

8017

8144

12226

7358

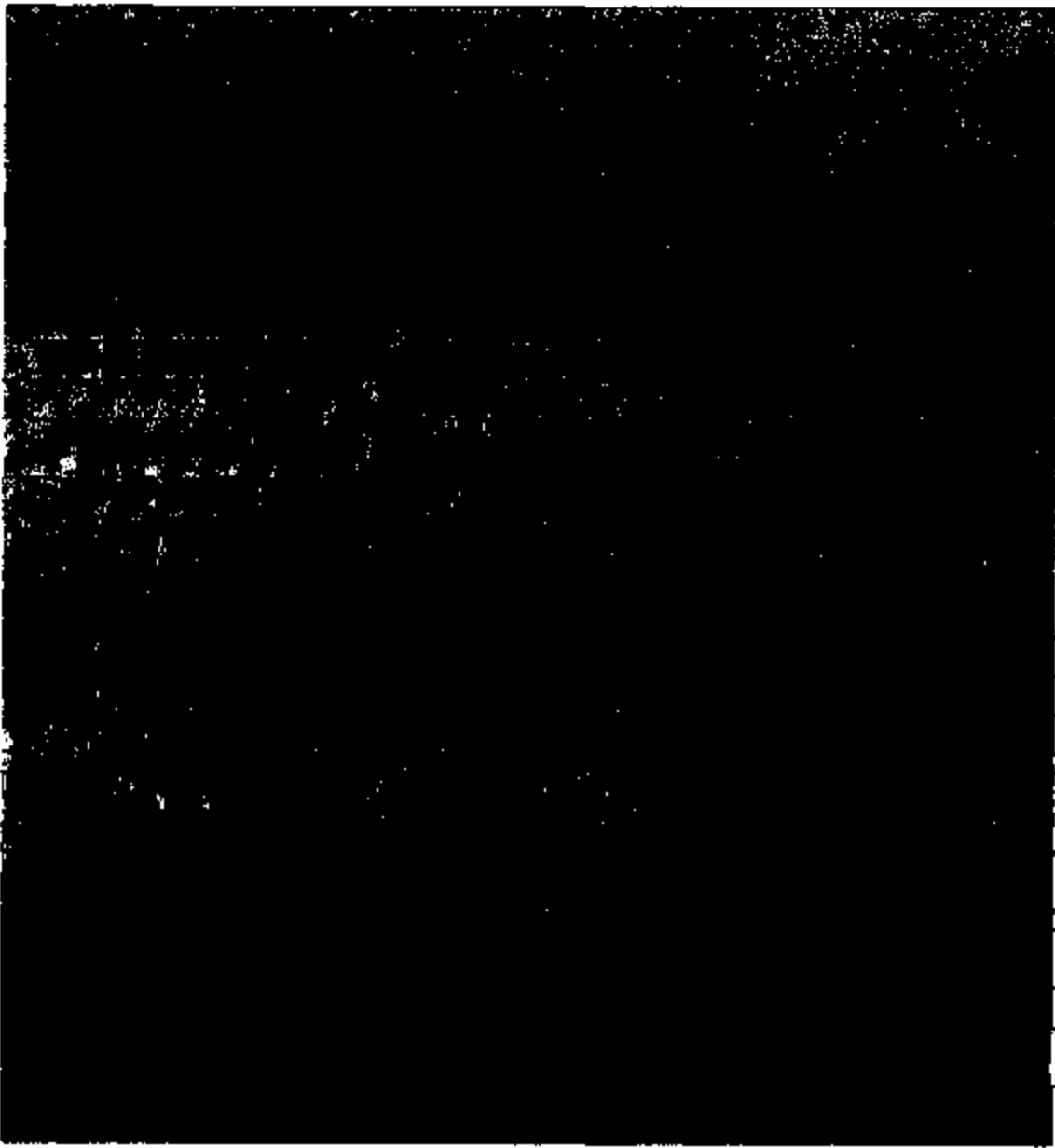
3118

888

879

1071

NO64-811 11878



1071

1071

1071

3678

3924

6744

7232

1882

3604

10200

20608

1440

7608

7680

3866

3667

10080

11211

11260

13428

13307

2190

2282

2368

1771

2498



2414

8878

8558

1203

1258

1208

987

10488

48248

3788

8818

3820

4357

812

812

1118

1852

3081

8881

3172

2417

2417

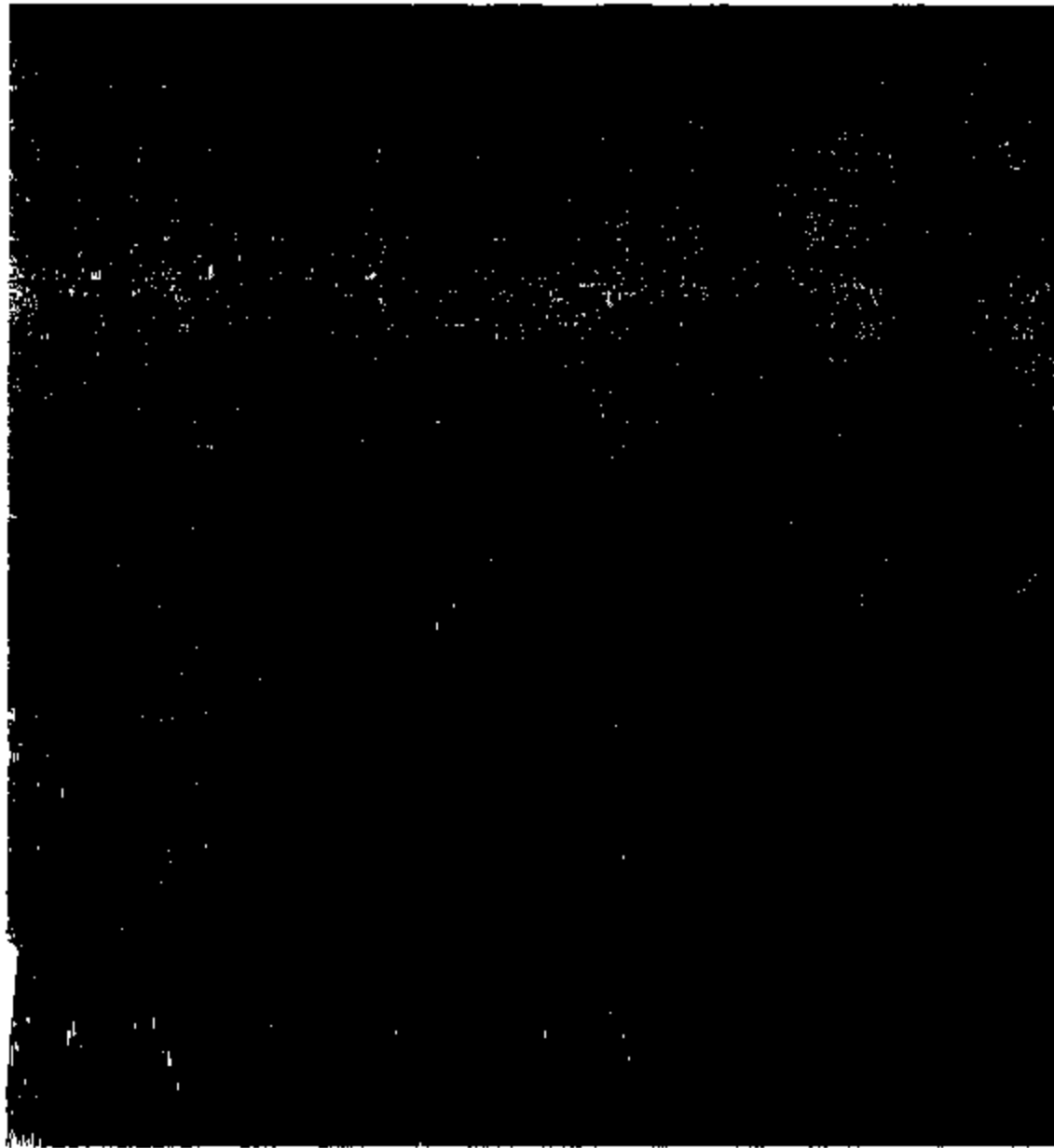
2417

2453

2488

2488

2888



2500

2500

2555

2500

2822

2822

2822

2833

4402

4181

8820

2822

4437

4443

4458

4448

4473

4483

4488

4811

4817

4527

4570

3048

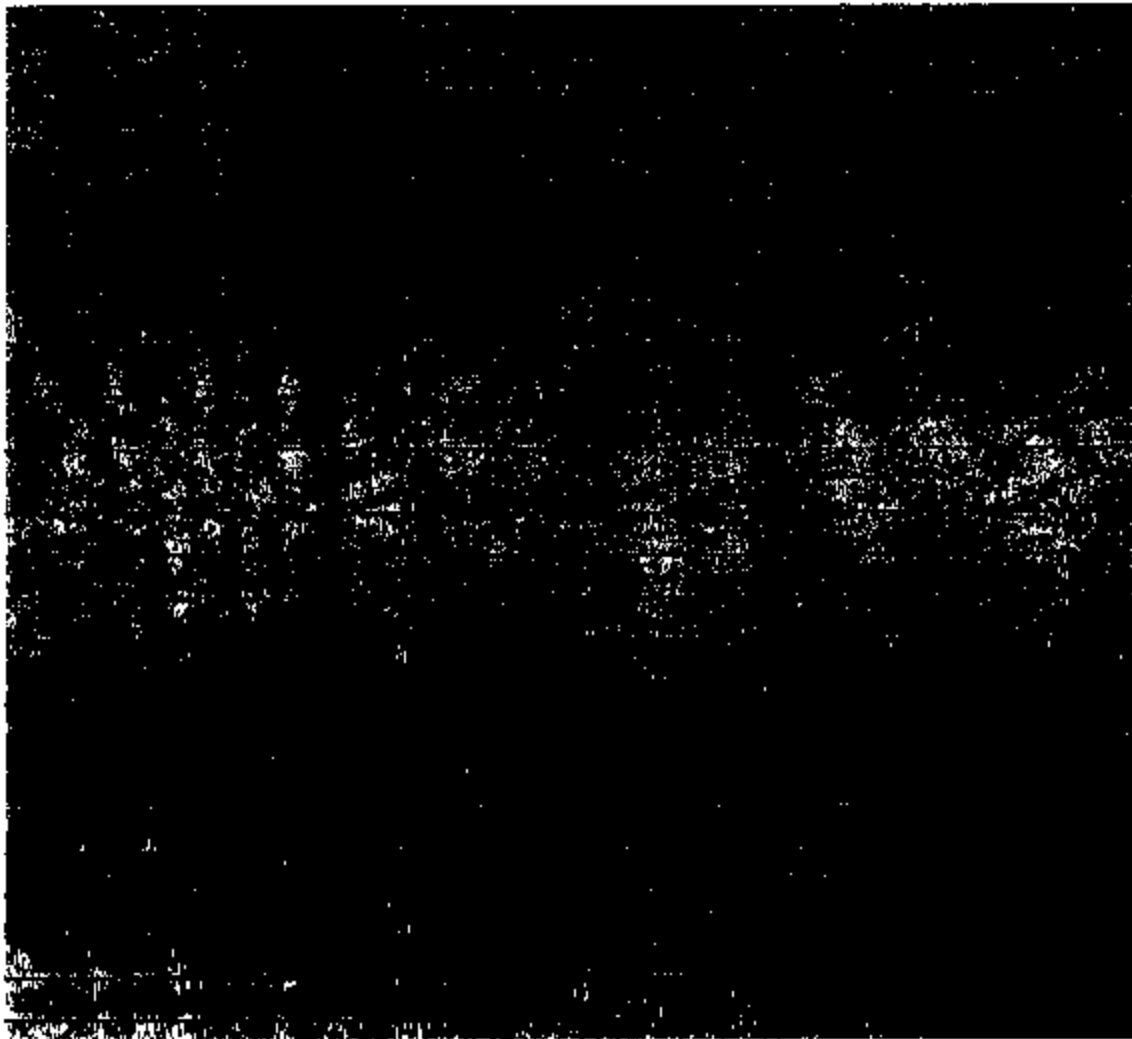
4587

8378

8182

11441

FORM-911 11878



2485

6889

6647

4482

4474

6647

2818

10088

2802

13588

13868

13868

20486

20485

6379

136

1896

4324

45281

6646

8851

48035

K084-011 11888

TBL01Exped-Navstarrecall_TECH_TXT1	TBL01Exped-Navstarrecall_TECH_TXT2	TBL01Exped-Navstarrecall_CURT_TXT
PERFORMED RECALL; NO REPAIRS NEEDED AT THIS TIME		PERFORM RECALL# 01821 (SEATBELT BUCKLE) AS NEEDED
PERFORMED RECALL	PERFORM RECALL 01821	01 & 21 RECALL
INSPECT SEATBELTS OK PERFORM RECALL 01821		01821 RECALL SEAT BELT BUCKLE
PERFORMED RECALL 01821. INSPECTION ONLY.		NAC RECALL 01821
PERFORMED RECALL		RECALL 01821
4474 01821 TECH 4474 PERFORM RECALL 01821 INSPECT ONLY		SEAT BELT RECALL 01821
OPEN NOTIFICATION 01821 FRONT SEAT BELT BUCKLES TECH 248 88 0884 PERFORMED NOTIFICATION 01821 INSPECTION ONLY NO REPLACEMENT USED SPECIAL SEAT BELT BUCKLE TOOL(FORD)TECH 248 88 0884		NOTIFICATION 01821 SEAT BELTS
RECALL 01821 INSPECT BUCKLES BOTH PASS		INSPECT DRIVERS AND FRONT PASSENGERS OUTBOARD SEAT BELT BUCKLE.
PERFORMED RECALL 01821 SEAT BELT BUCKLE RETENTION		PERFORM RECALL 01821 SEAT BELT BUCKLE
PERFORMED SEAT BELT BUCKLE AS PER RECALL NO PROBLEM FOUND		PERFORM CAMPAIGN 01821 SEAT BELT BUCKLE
INSPECTED SEATBELT AS PER RECALL NO PROBLEM FOUND		PERFORM OPEN CAMPAIGN #01821 SEAT BELT BUCKLE PER 04816
7180 CAMPAIGN 01821 0.3 SEAT BELTS CHECK OUT OK		PERFORMED SEAT BELT BUCKLE CAMPAIGN #01821 AS PER CAMPAIGN INSTRUCTIONS.
01821A 01821 INSPECTED BELT BUCKLES PASSED		PERFORM RECALL #01821 SEAT BELT BUCKLE
PERFORMED RECALL 01821		PERFORM 01821 SEAT BELT RECALL
01821 CHECK SEAT BELT LATCH OPERATION, FUNCTIONING NORMAL NO REPLACEMENT NEC		RECALL NAC 01821 SEAT BELT BUCKLE
PERFORMED RECALL AS NEEDED FOR SEAT BELT.		CERTAIN 2001 MODEL YEAR CROWN VICTORIA, EXCURSION, EXPEDITION, F150, F350 THROUGH F680, GRAND MARQ, NAVIGATOR, RANGER, TOWN CAR AND WINDSTAR VEHICLES SEAT BELT BUCKLE RETENTION RMTL
PERFORMED RECALL 01821		PERFORM RECALL 01821
RECALL PERFORM 01821 SEAT BELT RECALL PASS		01821 SEAT BELT BUCKLE
WF 01821A RECALL PERFORMED SEAT BELT BUCKLE INSPECTION BOTH BUCKLES PASSED INSPECTION AT THIS TIME		RECALL 01821 SEAT BELT BUCKLE
RECALL 01821A 01821 RECALL INSPECT OK		RECALL 01821 SEAT BELT BUCKLE
01821A 0.3 CHECK SEAT BELTS ONLY		PERFORM RECALL 01821 SEAT BELT LATCH

NA	TEST SEAT BELT BUCKLE OK	PERFORM RECALL 01521 SEAT BELT BUCKLE
NA	INSPECTED SEAT BELT BUCKLE	RECALL 01521 SEAT BELT BUCKLE
PERFORM RECALL OK, RECALL PERFORMED	INSPECT SEAT BELT BUCKLES, BUCKLES	SEAT BELT BUCKLE RECALL #01521
INSPECTED SEAT BELTS PER RECALL OK	4089 MH	SEAT BELT RECALL
RECALL	01521 INSPECT (NO BUCKLE REPLACEMENTS)	SAFETY RECALL 01521 CERTAIN 2001 FORD & L M; SEAT BELT BUCKLE RETENTION
RECALL	01521 INSPECT (NO BUCKLE REPLACEMENTS)	SAFETY RECALL 01521 CERTAIN 2001 FORD & L M; SEAT BELT BUCKLE RETENTION
RECALL	01521 INSPECT (NO BUCKLE REPLACEMENTS)	SAFETY RECALL 01521 CERTAIN 2001 FORD & L M; SEAT BELT BUCKLE RETENTION
RECALL	01521 INSPECT (NO BUCKLE REPLACEMENTS)	SAFETY RECALL 01521 CERTAIN 2001 FORD & L M; SEAT BELT BUCKLE RETENTION
INSPECT FRONT SEAT BELT BUCKLES	PASS	RECALL 01521 SEAT BELT BUCKLE
558 RECALL 01521A.0.3 BUCKLES OK		SAFETY RECALL 01521 SEAT BELT BUCKLE RETENTION
11772 01521A 0.3 NO REPLACEMENT NEEDED		CUSTOMER REQUESTS RECALL 01521 SEAT BELT BUCKLE
SEAT BELT BUCKLE RECALL	INSPECT SEATBELT	PERFORM RECALL #01521 SEAT BELT BUCKLE
CC097 PERFORMED 01521 SEATBELT RECALL		PERFORM 01521 RECALL SEATBELT
CC138 PERFORMED 01521 SEATBELT RECALL		PERFORM 01521 RECALL SEATBELT
RECALL 01521	TEST BUCKLE OK	RECALL 01521 SEAT BELT BUCKLE
PERFORM RECALL 01521		RECALL 01521
PERFORMED RECALL		RECALL 01521, SEAT BELT BUCKLES
INSPECTED BUCKLE, OK		CUSTOMER REQ. TO PERFORM RECALL FOR SEAT BELT BUCKLE
PERFORMED RECALL, PASSED INSPECTION		PERFORM RECALL 01521 SEAT BELT BUCKLE
1 01521A PASSED PERFORM INSPECTION PER FORD INSTRUCTIONS INSPECT BOTH SEATBELTS CHECK OK		RECALL 01521
NEG TO PERFORM INSPECTION BOTH PASS		INSPECT THE FRONT DRIVER SEAT AND OUTBOARD FRONT PASSENGER BELT BUCKLE FOR PROPER LATCH PERFORMANCE
02	INSPECTION ONLY OKAY	CUST RECEIVED RECALL #01521 SEAT BELTS PLEASE CHK AND ADVISE KE
		01521 RECALL

1 PERFORM RECALL

INSPECT SEATBELT PER RECALL,OK

SEAT BELT BUCKLES PASS INSPECTION, REPLACEMENT NOT NEEDED PER RECALL

PERFORMED THE RECALL AS OUTLINED?

RECALL INSPECTED RECALL OK

RECALL # 01821 SEAT BELT BUCKLE

PLEASE PERFORM RECALL #01821 SEATBELT

INSPECT SEAT BELT

RECALL 01821 DUE

RECALL 01821

OPEN RECALL COMPLETED OPEN RECALL

01821 INSPECTED OK

8822 WRR VERIFY CONCERN,TEH 490 TESTED SEAT BELT FOUND OUT THAT SEAT BELT OK
8822 WRR VERIFY CONCERN,TEH 490 TESTED SEAT BELT FOUND OUT THAT SEAT BELT OK

PER RECALL 01821 INSPECT OK

PER RECALL 01821 ALL PASS

PERFORMED RECALL 01821

01821 01821

01821 INSPECT BUCKLE

RECALL 01821 INSPECT SEATBELT BUCKLES OK

01821 INSPECT BUCKLES

R SEAT BELT BUCKLE INSPECTION

R CHECKED OUT OKAY

PERFORMED INSPECTION NO REPAIR NEEDED

5200 RECALL 01821 W TEST SEAT BELT BUCKLE RETENTION

7387 PERF. RECALL INSPECT & TEST SEAT BELTS FOR RETENTION.

7088 01821 W BUCKLE TEST

01821 RECALL SEAT BELT BUCKLE 01821 RECALL SEAT BELT BUCKLE

RECALL 01821 RECALL INSPECTION ONLY

RECALL 01821 RECALL INSPECTION

CUSTOMER REQUESTS OPEN RECALL BE PERFORMED SEAT BELT

RECALL 01821

A99 01821 SEAT BELT BUCKLE.

A99 01821 SEAT BELT BUCKLE.

RECALL 01821 SEAT BELT BUCKLE RETENTION

01821 SEAT BELT RECALL

RECALL 01821

RECALL 01821

RECALL 01821 SEATBELT BUCKLE INSPECTION

RECALL #01821

PERFORM RECALL 01821 SEAT BELT BUCKLE

01821 SEAT BELT BUCKLE

01821 SEAT BELT

PERFORM RECALL 01821 SEAT BELT BUCKLE

SEAT BELT BUCKLE RETENTION

SEAT BELT BUCKLE RETENTION

SEAT BELT BUCKLE RETENTION

RECALL NOTICE 01821 SEAT BELT BUCKLE

01821 SEATBELT RECALL, INSPECT AND ORDER PARTS IF NEEDED.

01821 SEAT BELT BUCKLE

A	PERFORM RECALL	01821 SEAT BELT BUCKLE
AB6	PERFORMED SEATBELT RECALL OK	01821 SEAT BELT BUCKLE
RECALL	RECALL	01821 RECALL
01821 RECALL	01821 RECALL	01821 RECALL
RECALL	01821	RECALL 01821 SEAT BELT RECALL
RECALL	01821	RECALL 01821 SEAT BELT
PERFORMED INSPECTION ONLY		RECALL 00821 (SEATBELT)
PERFORM RECALL AS NEEDED		INSPECT SEAT BELT BUCKLE 01821A .3 ADMIN .1
OPEN RECALL	1821 INSPECT SEATBELTS PER RECALL OK	RECALL 01821 SEAT BELT
INSPECTED BOTH FRONT SEAT BELT BUCKLES PER RECALL 01821 NO REPLACEMENT NEEDED		RECALL 01821
INSPECT SEAT BELT BUCKLES AS PER RECALL		RECALL 01821
12 RECALL 01821A .3 INSPECT SEAT BELT OPERATION AS PER RECALL BELTS OK		01821 SEAT BELT BUCKLE
PER FORD SPECIFICATIONS PERFORM SAFETY RECALL PERFORM RECALL PER FORD SPECIFICATIONS		01821 SEATBELT
PERFORM RECALL PERFORM RECALL 01821 INSPECT SEAT BELT BUCKLE		PERFORM RECALL 01821 INSPECT SEAT BELT BUCKLE
INSPECTED FOR RECALL 01821 AND RELEASED VEHICLE TO CUSTOMER.		RECALL 01821.
01821 RECALL, INSPECTED SEAT BELT BUCKLE AS PER INSTRUCTIONS. CHECKED OK		01821 RECALL FOR SEAT BELT BUCKLE
COMPLETE RECALL 01821		01821 SEATBELT
INSPECTED SEAT BELT BUCKLES AS PER RECALL.		SEAT BELT BUCKLE
OK PERFORMED RECALL NO REPAIR REQUIRED. 1		SAFETY RECALL 01821
PERFORMED INSPECTION NO ACTION NEEDED AT THIS TIME PERFORMED RECALL 01821A		C S CHECK FOR SEAT BELT RECALL
8 RECALL PERFORMED RECALL 01821		01821 RECALL SEAT BELT BUCKLE A99
FRONT SEATBELT BUCKLES MAYBE FAULTY... INSPECTED TESTED FRONT SEATBELT BUCKLES AS PER RECALL... NO REPAIR REQUIRED...		PERFORM RECALL 01821
12821 SEATBELT BUCKLES OK		CHECK OPEN RECALL 01821 SEAT BELT
01821 RECALL PERFORMED 01821 RECALL PERFORMED		RECALL 01821 BELT BUCKLE
3018 RECALL WARR PERFORMED RECALL 01821 INSPECTED ALL OK THIS IS CORRECT MILES		RECALL 01821 SEAT BELT BUCKLE

INSPECT SEAT BELT BUCKLE	PERFORMED RECALL INSPECTION 01821 SEAT BELT BUCKLE
NO REPLACEMENT NECESSARY	RECALL 01821 SEAT BELT BUCKLE
RECALL 01821 INSPECT ONLY ALL OK	01821 SEAT BELT BUCKLE
PERFORM RECALL 01821	PERFORM SAFETY BELT RECALL 01821
RECALL 01821 RECALL 01821	RECALL 01821
INSPECT SEAT BELT BUCKLE RETENTION NO REPLACEMENT NECESSARY	OPEN RECALL 01821 SEAT BELT INSPECTION
1	
INSPECT SEATBELT OK	INSPECT SEATBELT BUCKLE OK
INSPECTED SEAT BELTS ALL GOOD.	01821 SEAT BELT BUCKLE RECALL
17 01821 TEST FT SEATBELT BUCKLES CK OUT OK	01821 SEAT BELT BUCKLE RETENTION
SEATBELTS WORKING FINE 01821 00. ADD ON REPAIR	RECALL 01821 SEAT BELT RECALL
PERFORMED RECALL 01821 SEAT BELT BUCKLE INSP. INSPECTED SEAT BELT BUCKLE FOR RECALL T 189	RECALL 01821 SEAT BELT BUCKLE
VERIFIED REPAIR PERFORMED SEATBELT PROGRAM 01821. BELTS PASS. OPER. A.S	01821 SEAT BELT PROGRAM
INSPECTED SEAT BELTS PER RECALL, NO REPAIR NEEDED.	RECALL 01821, SET BELT BUCKLES
01821A 0.3 INSPECTED SEAT BUCKLES ALL OK AT THIS TIME.	RECALL 01821 SEAT BELT BUCKLE
1 SET BELT INSPECTED	RECALL 01821 SEAT BELT BUCKLE
INSPECT SEAT BUCKLES OK	01821 RECALL
1 INSPECT NO BUCKLE REPLACEMENTS	PERFORM RECALL 01821 N90 SEAT BELT BUCKLE RETENTION
4806 #01821 INSP AS PERRECALL BOLT SEATBELT BUCKLES WORKED PROPERLY NO REPLACEMENT NECESSARY.	RECALL #01821 CERTAIN 01 CRWN VIGEXCURSION, EXPEDITION, F SERIES, GRND MARQ, NAVIGATOR, RANGER, TOWN CAR & WINDSTAR SEAT BELT BUCKLE RETENTION.
1 INSPECT & RELEASE	SAFETY RECALL 01821 SEAT BELT BUCKLE
SAFETY RECALL 01821 PERFORMED BOTH SEAT BELTS PASS SAFETY RECALL.	SAFETY RECALL 01821 2001 SEAT BELT RECALL
1084 RECALL PERFORM RECALL OK	ANN RECALL SEAT BELT BUCKLE 01821
CHECKED LATCH ASSY AS PER INSTRUCTIONS, NO PROBLEMS FOUND	PERFORM RECALL 01821
INSPECTED PER 01821 OK	RECALL CAMPAIGN 01821
CHECKED PER RECALL	CUSTOMER STATES PERFORM RECALL 01821 SEAT BELT
RECALL 01821 INSPECT ONLY	01821 SEAT BELT BUCKLE

RECALL	01821 INSPECT ONLY	01821 SEAT BELT BUCKLE
RECALL	01821 INSPECT BUCKLES WITH TOOL	01821 SEAT BELT BUCKLE
RECALL	01821 CHEK BUCKLES WITH TOOL OK	01821 SEAT BELT BUCKLE
PERFORMED RECALL 01821		CUSTOMER STATES RECALL 01821
1 INSPECTED SEAT BLET BUCKLE ASSY PER RECALL CHECKED OK		RECALL 01821 SEAT BELT BUCKLE
183 RECALL		01821 RECALL
INSPECTED AND PASSED		RECALL 01821: 2001 CRM VIC, EXCURSION, EXPEDITION, F150, F250 F350, RANGER, WINDSTAR, TOWN CAR, NAV, GRD MARQ. SEAT BELT BUCKLE RETENTION.
TESTED SEAT BELT BUCKLES PER RECALL NO REPLACEMENT NEEDED AT THIS TIME		PERFORM 01821 RECALL
BUCKLE INSPECTION	01821	CUST STS RECALL, 01821 (SEATBELT BUCKLES)
1 COMPLETE RECALL INSPECTION ONLY NO REPAIRS NEEDED		RECALL 01821 SEAT BELT
14641 CHECKED SEAT BELTS FOR RECALL BOTH BELTS INVOLV		PERFORM 01821 RECALL
A SPER RECALL	01821 INSPECTION ONLY. BUCKLES PASSED INSPECTION.	RECALL 01821 SEAT BELT BUCKLE DRIVERS POPS OPEN
TECH PERFORMED RECALL 01821		INSPECT SEAT BELT BUCKLE
SEAT BELT RECALL	TESTED BOTH FRONT SEAT BLET BUCKLES, BOTH PASSED	RECALL 01821 SEAT BELT BUCKLE
01821	PERFORM INSPECTION AS PER RECALL	PERFORM OPEN RECALL 01821
PERFORMED RECALL 08121		08121 CUSTOMER RECALL
1 CHECK ALL SEAT BELTS AS PER RECALL, OK E		CUST STS CHECK SEAT BELT RECALL 01821
1 PERFORMED RECALL 01821		CUSTOMER STATES PERFORM RECALL 01821
RECALL COMPLETED		C/S OK RECALL
COMPLETE RECALL 01821 REPLACEMENT NOT NECESSARY		PERFORM RECALL #01821 SEAT BELT BUCKLE
RECALL	PERFORM RECALL	01821 SEAT BELT RECALL
60 TESTED FRONT SEAT BELTS PASSED		RECALL 01821 SEAT BELT RETENTION
2899 CHECKED SEAT BELTS RETENTION PER 01821. OK 0130		SAFETY RECALL 01821 SEAT BELT RETENTION
01821 COMPLETE INSPECT PASS		01821 SEATBELT BUCKLE INSPECTION
PERFORMED RECALL 01821. COMPLETED.		RECALL 01821 SEAT BELT BUCKLE
INSPECT OK		CERTAIN 2001 MODEL YEAR CROWN VICTORIA, EXCURSION, EXPEDITION, F 150, F 250 THROUGH F 350, GRAND MARQUIS, NAVIGATOR, RANGER, TOWN CAR, AND WINDSTAR VEHICLES SEAT BELT BUCKLE RETENTION

K084-011 11885

RECALL 01821 COMPLETED

RECALL 01821

TEST SEAT BELT BUCKLES PER RECALL ALL OK

PERFORM RECALL 01821.

9 PERFORM 01821 INSPECTION OK

01821,2001 CROWN VIC,EXCURSION,EXPEDITION,F 180,F 280 THROUGH F680,GRAND MARQUIS,NAVIGATOR,RANGER,TOWN CAR,AND WINDSTAR SEAT BELT BUCKLE RETENTION

INSPECT (NO BUCKLE REPLACEMENTS) LABOR OPERATION 01821A, BILLING TIME, 8.4, TECH TIME 0.3 PROGRAM CODE 01821

DEMONSTRATION DELIVERY HOLD; SAFETY RECALL 01821 CERTAIN 2001 MODEL YEAR CROWN VICTORIA, EXCURSION, EXPEDITION

INSPECTED SEAT BELTS AS PER RECALL 01821 REPLACEMENT NOT NECESSARY

PERFORM RECALL 01821

INSPECT BUCKLES OKAY

INSPECT BUCKLE NO REPLACEMENT

PERFORMED RECALL PER INSTRUCTION

RECALL 01821

PERFORM RECALL 01821

PERFORM RECALL 01821 SEAT BELT

PERFORMED SAFETY RECALL

RECALL 01821 DUE

PERFORM RECALL 01821, INSPECTION OK

RECALL 01821, SEAT BELT BUCKLE ASS

RECALL INSPECTION 1

RECALL 01821

PERFORM RECALL 01821, TEST SEAT BELT BUCKLES, OK

RECALL 01821

PERFORM RECALL

01821

PERFORM RECALL 01821

RECALL 01821 SEAT BELT BUCKLE

PERFORM RECALL 01821.

RECALL 01821 SEAT BELT BUCKLE

INSPECT AS PER BULLETIN

CUSTOMER STATES DO RECALL 01821

INSPECTED SEAT BUCKLES

RECALL 01821

COMPLETE RECALL 01821 INSPECT SEATBELT BUCKLES PASS

CUST STATES SEAT BELT BUCKLE CAMP. 01821

COMPLETE RECALL INSPECT BUCKLES PASS INSPECT SEAT BELT BUCKLES PER RECALL

RECALL : SEATBELT

INSPECTED FOR RECALL AND NO REPAIRS NEEDED. 01821A

ASS, 01821 RECALL, SEAT BELT BUCKLE

3012 PERFORMED TEST PER RECALL "PASSED"

FORD RECALL 01821 SEATBELT BUCKLE RETENTION

1688 RECALL 00821 INSPECTED SEAT BELTS PER RECALL, TESTED OK
#QUALITY CONTROL BY CUONG TRANH#

00821,RECALL,SEAT BELT BUCKLE RETENTION

3492 RECALL INSPECTED SEAT BELT BUCKLES PER RECALL

FORD RECALL 01821 SEAT BELT BUCKLE

1 TESTED AND INSPECTED. TESTED OK

01821 RECALL

RECALL INSPECTED

01821 SEAT BELT BUCKLE

4581 PASSED INSPECTION NO ACTION REQUIRED RECALL 01821
INSPECT ONLY

INSPECT FOR SAFETY RECALL 01821

21 RECALL 01821 PERFORMED RECALL 01821, INSPECTED FRT SEATBELT BUCKLES PER RECALL, NO FURTHER ACTION REQUIRED B1

RECALL 01821 SEAT BELT BUCKLE

PERFORMED RECALL INSPECTION NO SERVICE REQUIRED	PERFORM RECALL 01821 SEAT BELT BUCKLE
PERFORMED RECALL.....	CUSTOMER STATES HAS RECALL 01821 SEAT BELT
1 NO REPAIRS NEEDED AT THIS TIME	01821 SEAT BELT RECALL
SEATBELT INSPECTION 01821 CHECK SEATBELTS PASSED	OPEN RECALL 01821
INSPECTED BUCKLES PASS	01821 SEAT BELT BUCKLE
PERFORMED RECALL INSPECTION	RECALL01821 SEAT BELT
PERFORMED RECALL INSPECTION	01821 SEAT BELT BUCKLE RECALL
PERFORMED SEATBELT BUCKLE INSPECTION.	01821 SEATBELT BUCKLE RECALL
6739 WF RECALL INSPECTED SEAT BELT BUCKLE PASSED	ADD RECALL 01821 SEATBELT BUCKLE
PERFORMED RECALL 01821	OUTSTANDING RECALL 01821
PERFORM RECALL 01821 INSPECT	PERFORM RECALL 01821
PERFORMED RECALL INSPECTION	01821 SEAT BELT RECALL
RECALL 01821 INSPECTION ONLY PER RECALL	01821 SEAT BELT RECALL
PERFORMED INSPECTION OK	RECALL 01821
INSPECTED ALL BUCKLES NO REPLACEMENT NEEDED	OK FOR SEAT BELT RECALL
RECALL PERFORM RECALL ON SEAT BELT	PERFORM CAMPAIGN 01821 SEAT BELT BUCKLE
INSPECTED PER RECALL	01821 RECALL SEAT BELT.
PERFORMED SEAT BELT RECALL OK	RECALL 01821
22889 RECALL 01821 W PERFORM RECALL 01821 PASS INSPECTION	RECALL SEAT BELT BUCKLE INSPECTION
22307 INSPECT & RELEASE O.K. RECALL 01821	RECALL 01821 SEAT BELT BUCKLE.
12281 INSPECTED BOTH SEAT BELTS BOTH PASSED	SEAT BELT BUCKLE
18 INSPECTED PER RECALL 01821 PASSES, NOT AFFECTED.	RECALL 01821 SEAT BELT BUCKLE PASSED INSPECTION
RECALL PERFORM INSPECT SEAT BELT BUCKLE AS PER RECALL NO REPLACEMENT REQUIRED	SEAT BELT RECALL
INSPECT SEATBELTS OK	RECALL 01821 SEAT BELT
INSPECT SEAT BELT BUCKLES, OK.	CERTAIN 2001 MODEL YEAR CROWN VIC, EXCURSION, EXPEDITION, F150, F250 F350, GRAND MARQUIS, NAVIGATOR, RANGER, TOWN CAR, & WINDSTAR VEHICLES SEAT BELT BUCKLE RETENTION
2085 RECALL 01821 PERFORMED INSPECT ONLY	SAFETY RECALL 01821 SEAT BELT BUCKLE RETENTION
INSPECT SEATBELT	PERFORM RECALL 01821

RECALL	01521 SEAT BELT BUCKLE INSPECTION	RECALL 01521
INSP. SEAT BELT BUCKLES AS PER CAMPAIGN 01521. BUCKLES OKAY AT THIS TIME.		RECALL 01521 SEAT BELT BUCKLE
INSPECTION COMPLETE		01521 RECALL SEAT BELT BUCKLES
1 INSPECTION ONLY, BOTH SEAT BELT BUCKLES PASSED QUALITY CHECK 7228		RECALL 01521 SEATBELT BUCKLE
8478 RECALL#01521 SEAT BELT BUCKLE TEST. PERFORMED SEAT BELT BUCKLE TEST OK,NO REPAIR NEEDED.PER RECALL#01521. LABOR OP 01521 A.		RECALL 01521 SEAT BELT BUCKLE OK ALL ADVISE IF IT QUALIFES
INSPECTION COMPLETE		01521 SEAT BELT
RECALL	INSPECT SEAT BELTS OK	RECALL 01521
RECALL	01521 CHECKED SEATBELTS, OK	RECALL 01521 SEATBELTS
OK BELTS NO WORK NEEDED		01521 SEAT BELT RECALL
PERFORM INSPECT. SEATBELT BUCKLE RECALL OK. 01521		PERFORM SEATBELT BUCKLE RECALL 01521
INSPECTED SEAT BUCKLES PER RECALL 01521A 03		RECALL 01521...SEAT BELT BUCKLE
RECALL 01521 PERFORM RECALL 01521 INSPECT SEAT BELT LATCHES AND ALL OK OUT 5211		PERFORM RECALL #01521 SEATBELT BUCKLE
7969 INSPECTION BELTS OK X99 RECALL		01521 SEATBELT BUCKLE INSPECTION AND POSSIBLE REPLACEMENT
8751 01521 SEATBELT INSPECTION ONLY		01521 SEATBELT BUCKLE INSPECTION AND POSSIBLE REPLACEMENT
		01521 SEAT BELT BUCKLE
1 INSPECT SEAT BELT BUCKLES: NO REPLACEMENT REQUIRED		PERFORM RECALL
INSPECT SEAT BELTS		PERFORM SEATBELT RECALL CHECK
PERFORMED THE RECALL AS OUTLINED		RECALL 01521 DUE
SAFETY RECALL 01521 PERFORM SAFETY RECALL 01521 AS INSTRUCTED BY FACTORY INSPECTION ONLY.....PASS		SAFETY RECALL 01521 SEAT BELT BUCKLE RETENTION
PERFORMED RECALL 01521, TESTED ALL SEAT BELTS FOUND OK		01521 SEAT BELT INSPECTION

TBL01Expnd-Navaftarmcal_AREA_CD	TBL01Expnd-Navaftarmcal_COUNTRY_CD	TBL01Expnd-Navaftarmcal_SLS_DLR_CD	TBL01Expnd-Navaftarmcal_TXN_CD	TBL01Expnd-Navaftarmcal_CNTRY_SOLD
205	USA		121406 01S21	USA
205	USA		121707 01S21	USA
205	USA		328530 01S21	USA
	USA		123001 01S21	USA
601	USA		123580 01S21	USA
480	USA		584289 01S21	USA
480	USA		584289 01S21	USA
602	USA		171171 01S21	USA
802	USA		196582 01S21	USA
802	USA		171178 01S21	USA
802	USA		171178 01S21	USA
780	USA		171079 01S21	USA
808	USA		171183 01S21	USA
808	USA		171183 01S21	USA
310	USA		179040 01S21	USA
925	USA		172029 01S21	USA
828	USA		171037 01S21	USA
908	USA		171180 01S21	USA
882	USA		171085 01S21	USA
883	USA		171047 01S21	USA
882	USA		171011 01S21	USA

714 USA	171032 01821	USA
714 USA	171043 01821	USA
760 USA	171427 01821	USA
818 USA	171047 01821	USA
818 USA	171078 01821	USA
819 USA	171078 01821	USA
819 USA	171078 01821	USA
819 USA	171078 01821	USA
788 USA	171102 01821	USA
819 USA	171088 01821	USA
828 USA	171015 01821	USA
918 USA	171026 01821	USA
918 USA	171040 01821	USA
918 USA	171040 01821	USA
828 USA	171086 01821	USA
908 USA	171164 01821	USA
310 USA	171015 01821	USA
918 USA	171078 01821	USA
916 USA	171237 01821	USA
816 USA	172013 01821	USA
208 USA	172402 01821	USA
616 USA	172006 01821	USA
208 USA	158011 01821	USA
818 USA	171029 01821	USA

FORM-011 11993

628 USA	354128 01521	USA
310 USA	354280 01521	USA
862 USA	354051 01521	USA
303 USA	355290 01521	USA
303 USA	355118 01521	USA
USA	150623 01521	USA
860 USA	111407 01521	USA
USA	01521	USA
813 USA	124448 01521	USA
407 USA	124228 01521	USA
954 USA	124016 01521	USA
984 USA	124018 01521	USA
407 USA	124224 01521	USA
407 USA	141445 01521	USA
904 USA	124488 01521	USA
407 USA	124214 01521	USA
813 USA	134228 01521	USA
954 USA	124010 01521	USA
813 USA	124621 01521	USA
407 USA	325188 01521	USA
407 USA	325189 01521	USA
724 USA	318308 01521	USA
305 USA	325265 01521	USA
308 USA	325268 01521	USA
305 USA	225118 01521	USA
770 USA	121003 01521	USA
478 USA	121500 01521	USA
770 USA	121480 01521	USA

704 USA	121205 01821	USA
770 USA	121023 01821	USA
770 USA	121089 01821	USA
770 USA	141293 01821	USA
770 USA	121025 01821	USA
770 USA	121025 01821	USA
012 USA	121208 01821	USA
770 USA	325057 01821	USA
770 USA	588223 01821	USA
808 USA	172203 01821	USA
204 USA	258488 01821	USA
208 USA	358575 01821	USA
847 USA	141416 01821	USA
217 USA	141105 01821	USA
217 USA	141141 01821	USA
812 USA	349140 01821	USA
859 USA	147011 01821	USA
808 USA	171104 01821	USA
859 USA	147301 01821	USA
804 USA	123148 01821	USA
804 USA	123027 01821	USA
337 USA	123305 01821	USA
225 USA	123145 01821	USA
337 USA	123271 01821	USA
804 USA	128020 01821	USA

337 USA	123284 01821	USA
337 USA	123548 01821	USA
704 USA	121213 01821	USA
806 USA	312145 01821	USA
410 USA	127586 01821	USA
207 USA	111559 01821	USA
207 USA	111212 01821	USA
810 USA	346276 01821	USA
734 USA	148439 01821	USA
313 USA	148020 01821	USA
617 USA	148317 01821	USA
860 USA	148325 01821	USA
418 USA	148072 01821	USA
888 USA	148295 01821	USA
810 USA	348385 01821	USA
810 USA	348335 01821	USA
734 USA	348362 01821	USA
861 USA	168488 01821	USA
417 USA	168450 01821	USA
873 USA	123290 01821	USA
314 USA	363904 01821	USA
801 USA	123309 01821	USA
408 USA	01821	USA
704 USA	171085 01821	USA
386 USA	121619 01821	USA
704 USA	121213 01821	USA

RODA-011 11903

704 USA	121213 01821	USA
704 USA	121213 01821	USA
704 USA	121213 01821	USA
282 USA	121820 01821	USA
910 USA	121025 01821	USA
282 USA	121841 01821	USA
403 USA	193084 01821	USA
979 USA	118810 01821	USA
712 USA	118088 01821	USA
USA	314474 01821	USA
732 USA	01821	USA
702 USA	171168 01821	USA
702 USA	172404 01821	USA
702 USA	171168 01821	USA
616 USA	113062 01821	USA
691 USA	118103 01821	USA
614 USA	314841 01821	USA
716 USA	314082 01821	USA
718 USA	314091 01821	USA
616 USA	314017 01821	USA
618 USA	314180 01821	USA
614 USA	147018 01821	USA
614 USA	147312 01821	USA
218 USA	144043 01821	USA
408 USA	182803 01821	USA
618 USA	152835 01821	USA

890 USA	152689 01521	USA
495 USA	387331 01821	USA
809 USA	174022 01521	USA
218 USA	318071 01521	USA
810 USA	318063 01521	USA
810 USA	118402 01521	USA
843 USA	127888 01521	USA
843 USA	328085 01521	USA
USA	118802 01521	USA
USA	121420 01821	USA
888 USA	121218 01521	USA
901 USA	123008 01521	USA
901 USA	123002 01521	USA
903 USA	162707 01621	USA
903 USA	162707 01821	USA
915 USA	162540 01821	USA
940 USA	152518 01821	USA
281 USA	162082 01821	USA
281 USA	153002 01821	USA
970 USA	164823 01521	USA
817 USA	162019 01521	USA
817 USA	182018 01821	USA
817 USA	182018 01521	USA
284 USA	182481 01521	USA
940 USA	182406 01521	USA
817 USA	182019 01821	USA
805 USA	182440 01521	USA

K024-011 11905

872 USA	182015 01S21	USA
872 USA	182017 01S21	USA
872 USA	182018 01S21	USA
815 USA	182486 01S21	USA
812 USA	182308 01S21	USA
812 USA	182305 01S21	USA
812 USA	182030 01S21	USA
812 USA	182740 01S21	USA
713 USA	182485 01S21	USA
281 USA	182086 01S21	USA
818 USA	182087 01S21	USA
819 USA	182308 01S21	USA
812 USA	182082 01S21	USA
281 USA	182082 01S21	USA
489 USA	182788 01S21	USA
281 USA	182344 01S21	USA
713 USA	182024 01S21	USA
812 USA	182300 01S21	USA
868 USA	124185 01S21	USA
713 USA	182031 01S21	USA
281 USA	182049 01S21	USA
713 USA	182049 01S21	USA
880 USA	182782 01S21	USA
281 USA	182024 01S21	USA
281 USA	182024 01S21	USA
488 USA	182037 01S21	USA
872 USA	182002 01S21	USA
214 USA	171208 01S21	USA

908 USA	152449 01521	USA
918 USA	152211 01521	USA
281 USA	152032 01521	USA
281 USA	152026 01521	USA
713 USA	152241 01521	USA
281 USA	152029 01521	USA
USA	152007 01521	USA
281 USA	347032 01521	USA
909 USA	347311 01521	USA
972 USA	152012 01521	USA
972 USA	152012 01521	USA
972 USA	367385 01521	USA
918 USA	162210 01521	USA
918 USA	162210 01521	USA
801 USA	158559 01521	USA
708 USA	127012 01521	USA
797 USA	124016 01521	USA
604 USA	127072 01521	USA
USA	346834 01521	USA
360 USA	174011 01521	USA
208 USA	174208 01521	USA
USA	364706 01521	USA

V00	B1	S0X	0
V00	B2	S0X	0
V00	B3	S0X	0
V00	B4	S0X	0
V00	B5	S0X	0
V00	B6	S0X	0
V00	B7	S0X	0
V00	B8	S0X	0
V00	B9	S0X	0
V00	B0	S0X	0
V00	B1	S0X	0
V00	B2	S0X	0
V00	B3	S0X	0
V00	B4	S0X	0
V00	B5	S0X	0
V00	B6	S0X	0
V00	B7	S0X	0
V00	B8	S0X	0
V00	B9	S0X	0
V00	B0	S0X	0
V00	B1	S0X	0
V00	B2	S0X	0
V00	B3	S0X	0
V00	B4	S0X	0
V00	B5	S0X	0
V00	B6	S0X	0
V00	B7	S0X	0
V00	B8	S0X	0
V00	B9	S0X	0
V00	B0	S0X	0

RC01-011 11009

V00	B4	SXX	0
V00	B4	SXX	0
V00	B4	SXX	0
V00	B4	SXX	0
V00	B4	SXX	0
V00	B4	SXX	0
V00	B5	SXX	0
V00	B5	SXX	0
V00	B5	SXX	0
V00	B3	SXX	0
V00	B3	SXX	0
V00	B3	SXX	0
V00	B3	SXX	0
V00	B3	SXX	0
V00	B5	SXX	0
V00	B3	SXX	0
V00	B3	SXX	0
V00	B4	SXX	0
V00	B4	SXX	0
V00	B4	SXX	0
V00	B4	SXX	0
V00	B4	SXX	0
V00	B4	SXX	0
V00	B3	SXX	0
V00	B3	SXX	0
V00	B3	SXX	0

FORM-011 11910

V00	B3	S0X	0
V00	B3	S0X	0
V00	B3	S0X	0
V00	B4	S0X	0
V00	B4	S0X	0
V00	B3	S0X	0
V00	B3	S0X	0
V00	B4	S0X	0
V00	B3	S0X	0
V00	B3	S0X	0
V00	B3	S0X	0
V00	B3	S0X	0
V00	B3	S0X	0
V00	B3	S0X	0
V00	B4	S0X	0
V00	B4	S0X	0
V00	B4	S0X	0
V00	B4	S0X	0
V00	B5	S0X	0
V00	B3	S0X	0
V00	B3	S0X	0
V00	B4	S0X	0
V00	B5	S0X	0
V00	B4	S0X	0
V00	B5	S0X	0
V00	B3	S0X	0
V00	B3	S0X	0

FOIA-011 11912

V00	B3	S0X	0
V00	B3	S0X	0
V00	B3	S0X	0
V00	B3	S0X	0
V00	B3	S0X	0
V00	B3	S0X	0
V00	B3	S0X	0
V00	B3	S0X	0
V00	B3	S0X	0
V00	B5	S0X	0
V00	B4	S0X	0
V00	B3	S0X	0
V00	B3	S0X	0
V00	B3	S0X	0
V00	B5	S0X	0
V00	B3	S0X	0
V00	B3	S0X	0
V00	B4	S0X	0
V00	B4	S0X	0
V00	B4	S0X	0
V00	B4	S0X	0
V00	B4	S0X	0
V00	B4	S0X	0
V00	B3	S0X	0
V00	B3	S0X	0
V00	B3	S0X	0
V00	B3	S0X	0
V00	B3	S0X	0

FORM-011 11913

V00	B1	BOX	0
V00	B2	BOX	0
V00	B3	BOX	0
V00	B4	BOX	0
V00	B5	BOX	0
V00	B6	BOX	0
V00	B7	BOX	0
V00	B8	BOX	0
V00	B9	BOX	0
V00	B10	BOX	0
V00	B11	BOX	0
V00	B12	BOX	0
V00	B13	BOX	0
V00	B14	BOX	0
V00	B15	BOX	0
V00	B16	BOX	0
V00	B17	BOX	0
V00	B18	BOX	0
V00	B19	BOX	0
V00	B20	BOX	0
V00	B21	BOX	0
V00	B22	BOX	0
V00	B23	BOX	0
V00	B24	BOX	0
V00	B25	BOX	0
V00	B26	BOX	0
V00	B27	BOX	0
V00	B28	BOX	0
V00	B29	BOX	0
V00	B30	BOX	0
V00	B31	BOX	0
V00	B32	BOX	0
V00	B33	BOX	0
V00	B34	BOX	0
V00	B35	BOX	0
V00	B36	BOX	0
V00	B37	BOX	0
V00	B38	BOX	0
V00	B39	BOX	0
V00	B40	BOX	0
V00	B41	BOX	0
V00	B42	BOX	0
V00	B43	BOX	0
V00	B44	BOX	0
V00	B45	BOX	0
V00	B46	BOX	0
V00	B47	BOX	0
V00	B48	BOX	0
V00	B49	BOX	0
V00	B50	BOX	0
V00	B51	BOX	0
V00	B52	BOX	0
V00	B53	BOX	0
V00	B54	BOX	0
V00	B55	BOX	0
V00	B56	BOX	0
V00	B57	BOX	0
V00	B58	BOX	0
V00	B59	BOX	0
V00	B60	BOX	0
V00	B61	BOX	0
V00	B62	BOX	0
V00	B63	BOX	0
V00	B64	BOX	0
V00	B65	BOX	0
V00	B66	BOX	0
V00	B67	BOX	0
V00	B68	BOX	0
V00	B69	BOX	0
V00	B70	BOX	0
V00	B71	BOX	0
V00	B72	BOX	0
V00	B73	BOX	0
V00	B74	BOX	0
V00	B75	BOX	0
V00	B76	BOX	0
V00	B77	BOX	0
V00	B78	BOX	0
V00	B79	BOX	0
V00	B80	BOX	0
V00	B81	BOX	0
V00	B82	BOX	0
V00	B83	BOX	0
V00	B84	BOX	0
V00	B85	BOX	0
V00	B86	BOX	0
V00	B87	BOX	0
V00	B88	BOX	0
V00	B89	BOX	0
V00	B90	BOX	0
V00	B91	BOX	0
V00	B92	BOX	0
V00	B93	BOX	0
V00	B94	BOX	0
V00	B95	BOX	0
V00	B96	BOX	0
V00	B97	BOX	0
V00	B98	BOX	0
V00	B99	BOX	0
V00	B100	BOX	0

ROD4-011 11815

V00	B3	SXX	0
V00	B3	SXX	0
V00	B3	SXX	0
V00	B3	SXX	0
V00	B3	SXX	0
V00	B3	SXX	0
V00	B3	SXX	0
V00	B3	SXX	0
V00	B4	SXX	0
V00	B4	SXX	0
V00	B3	SXX	0
V00	B3	SXX	0
V00	B4	SXX	0
V00	B3	SXX	0
V00	B3	SXX	0
V00	B3	SXX	0
V00	B3	SXX	0
V00	B3	SXX	0
V00	B3	SXX	0
V00	B3	SXX	0
V00	B3	SXX	0
V00	B3	SXX	0
V00	B4	SXX	0

TBL01Exped-Navalaircraft_VIN_CD	TBL01Exped-Navalaircraft_VEH_LINE_CD	TBL01Exped-Navalaircraft_MKT_DERIVED	TBL01Exped-Navalaircraft_BOD_CAR_STL
1FMRU15WX1L [REDACTED]	T7B3	*	TWD
1FMRU15L11L [REDACTED]	T7B3	*	TWD
5LMBU27B31L [REDACTED]	T7B4	*	TWB
1FMRU15W31L [REDACTED]	T7B3	*	TWD
1FMPU15L21L [REDACTED]	T7B3	*	TVA
5LMPU26R41L [REDACTED]	T7B4	*	TWD
5LMPU26R51L [REDACTED]	T7B4	*	TWD
1FMPU15L51L [REDACTED]	T7B3	*	TVA
1FMPU15L11L [REDACTED]	T7B3	*	TVA
1FMRU17WX1L [REDACTED]	T7B3	*	TWD
1FMRU15W41L [REDACTED]	T7B3	*	TWD
1FMRU15W31L [REDACTED]	T7B3	*	TWD
1FMRU15W31L [REDACTED]	T7B3	*	TWD
1FMRU15W31L [REDACTED]	T7B3	*	TWD
1FMRU15L21L [REDACTED]	T7B4	*	TWD
1FMRU15W31L [REDACTED]	T7B3	*	TWD
1FMRU15W31L [REDACTED]	T7B3	*	TWD
1FMRU17L11L [REDACTED]	T7B3	*	TWD
1FMRU15W31L [REDACTED]	T7B3	*	TWD
1FMRU17W31L [REDACTED]	T7B3	*	TWD
1FMPU15L31L [REDACTED]	T7B3	*	TVA

6LMEU27R11L	[REDACTED]	T7B4	*	TWB
6LMEU27R41L	[REDACTED]	T7B4	*	TWB
6LMEU27R81L	[REDACTED]	T7B4	*	TWB
6LMPU28R41L	[REDACTED]	T7B4	*	TWD
6LMPU28R11L	[REDACTED]	T7B4	*	TWD
1FMRU18L11L	[REDACTED]	T7B3	*	TWD
1FMRU18W61L	[REDACTED]	T7B3	*	TWD
1FMRU18W71L	[REDACTED]	T7B3	*	TWD
1FMRU17L41L	[REDACTED]	T7B3	*	TWD
1FMRU18W41L	[REDACTED]	T7B3	*	TWD
1FMRU18W21L	[REDACTED]	T7B3	*	TWD
1FMRU18W21L	[REDACTED]	T7B3	*	TWD
1FMRU18W41L	[REDACTED]	T7B3	*	TWD
1FMRU18W31L	[REDACTED]	T7B3	*	TWD
1FMRU17W11L	[REDACTED]	T7B3	*	TWD
1FMRU18W81L	[REDACTED]	T7B3	*	TWD
1FMRU18W91L	[REDACTED]	T7B3	*	TWD
1FMRU17L41L	[REDACTED]	T7B3	*	TWD
1FMRU17W81L	[REDACTED]	T7B3	*	TWD
6LMEU27R21L	[REDACTED]	T7B4	*	TWB
6LMPU28R11L	[REDACTED]	T7B4	*	TWD
6LMPU28A11L	[REDACTED]	T7B4	*	TWD
6LMEU27R81L	[REDACTED]	T7B4	*	TWB
6LMEU27R11L	[REDACTED]	T7B4	*	TWB
6LMEU27R41L	[REDACTED]	T7B4	*	TWB
1FMRU16W11L	[REDACTED]	T7B3	*	TWD
1FMRU17L81L	[REDACTED]	T7B3	*	TWD
1FMRU18LX1L	[REDACTED]	T7B3	*	TWD

1FMRU15W71L		T/BS	*	TWD
1FMRU15W81L		T/BS	*	TWD
1FMRU16L31LB		T/BS	*	TWD
1FMRU15WX1L		T/BS	*	TWD
1FMRU16L11LB		T/BS	*	TWD
1FMRU16L41LB		T/BS	*	TWD
1FMRU16L41LA		T/BS	*	TWD
6LMEU27R41L		T/BS	*	TWS
6LMEU27R41LJ		T/BS	*	TWS
1FMRU16W71L		T/BS	*	TWD
6LMPU26R21L		T/BS	*	TWD
6LMPU26R21LJ		T/BS	*	TWD
1FMPU16LX1LB		T/BS	*	TWD
1FMPU16L31LA		T/BS	*	TVA
1FMPU16L31LB		T/BS	*	TWD
6LMPU26R41L		T/BS	*	TWD
1FMRU16W81L		T/BS	*	TWD
1FMRU16W11L		T/BS	*	TWD
1FMRU16W81L		T/BS	*	TWD
1FMRU16W31L		T/BS	*	TWD
1FMRU17LX1LA		T/BS	*	TWD
1FMRU16W81L		T/BS	*	TWD
1FMRU16L01LA		T/BS	*	TWD
1FMRU16W21L		T/BS	*	TWD
1FMRU17L71LB		T/BS	*	TWD

1FMRL16L1L		T63	*	TWD
1FMRL17L1L		T63	*	TWD
1FMRL18W1L		T63	*	TWD
6LMPU28R1L		T64	*	TWD
1FMRL16W1L		T63	*	TWD
1FMRL16W3L		T63	*	TWD
1FMRL16W5L		T63	*	TWD
6LMPU28R3L		T64	*	TWD
1FMRL16W6L		T63	*	TWD
1FMRL16W51L		T63	*	TWD
1FMPL18L1L		T63	*	TVA
1FMPL18L1L		T63	*	TVA
1FMPL16W1L		T63	*	TWD
1FMPL18W1L		T63	*	TWD
6LMPU28R1L		T64	*	TWD
6LMPU28R1L		T64	*	TWD
6LMPU28R11L		T64	*	TWD
1FMPL18LX1L		T63	*	TWD
1FMRL16W11L		T63	*	TWD
1FMPL18L1L		T63	*	TVA
6LMPU28R1L		T64	*	TWD
1FMPL16W21L		T63	*	TWD
6LMPU28R1L		T64	*	TWD
1FMPL16W1L		T63	*	TWD
1FMPL16W41L		T63	*	TWD
1FMPL17L1L		T63	*	TWD

1004-011 11921

1FMRU15W21L	[REDACTED]	T/BS	*	T/WO
1FMRU15WX1L	[REDACTED]	T/BS	*	T/WO
1FMRU15W51L	[REDACTED]	T/BS	*	T/WO
1FMRU15L51L	[REDACTED]	T/BS	*	T/WO
1FMRU15W41L	[REDACTED]	T/BS	*	T/WO
1FMRU15LK1L	[REDACTED]	T/BS	*	T/WO
1FMRU15WDX1L	[REDACTED]	T/BS	*	T/WO
1FMRU15LX1L	[REDACTED]	T/BS	*	T/WA
1FMRU15W31L	[REDACTED]	T/BS	*	T/WO
5LMPU25R51L	[REDACTED]	T/B4	*	T/WO
1FMRU15L71L	[REDACTED]	T/BS	*	T/WA
1FMRU15W21L	[REDACTED]	T/BS	*	T/WO
1FMRU15L11L	[REDACTED]	T/BS	*	T/WA
1FMRU15W51L	[REDACTED]	T/BS	*	T/WO
1FMRU15W31L	[REDACTED]	T/BS	*	T/WO
1FMRU15L51L	[REDACTED]	T/BS	*	T/WA
3LMPU25R01L	[REDACTED]	T/B4	*	T/WO
3LMPU25R01L	[REDACTED]	T/B4	*	T/WO
3LMPU25R01L	[REDACTED]	T/B4	*	T/WO
5LMPU25R21L	[REDACTED]	T/B4	*	T/WO
3LMPU25R01L	[REDACTED]	T/B4	*	T/WO
1FMRU15W51L	[REDACTED]	T/BS	*	T/WO
1FMRU15W31L	[REDACTED]	T/BS	*	T/WO
1FMRU15L51L	[REDACTED]	T/BS	*	T/WA
1FMRU17L81L	[REDACTED]	T/BS	*	T/WO
1FMRU15LX1L	[REDACTED]	T/BS	*	T/WO

RO84-011 11822

1FMRU17L81L	T83	*	TWD
3LMEU27R31L	T84	*	TWB
1FMPU18L11L	T83	*	TVA
3LMPU28R81L	T84	*	TWD
3LMPU28R71L	T84	*	TWD
1FMRU18W21L	T83	*	TWD
1FMRU17L21L	T83	*	TWD
3LMEU27R31L	T84	*	TWB
1FMPU18L81L	T83	*	TWD
1FMRU17L81L	T83	*	TWD
1FMRU18W11L	T83	*	TWD
1FMPU18L81L	T83	*	TVA
1FMRU18W91L	T83	*	TWD
1FMRU18W91L	T83	*	TWD
1FMPU18L81L	T83	*	TVA
1FMRU17W31L	T83	*	TWD
1FMRU17LX1L	T83	*	TWD
1FMRU18W81L	T83	*	TWD
1FMRU17W21L	T83	*	TWD
1FMPU18L01L	T83	*	TWD
1FMRU18W71L	T83	*	TWD
1FMRU18L41L	T83	*	TWD
1FMRU17W71L	T83	*	TWD
1FMRU17L01L	T83	*	TWD
1FMRU17L11L	T83	*	TWD
1FMRU18W81L	T83	*	TWD
1FMRU18W81L	T83	*	TWD

1FMRU17W41LE	T/83	*	TWD
1FMRU17W81L	T/83	*	TWD
1FMRU16W21L	T/80	*	TWD
1FMRU16W21L	T/80	*	TWD
1FMRU17W11LE	T/85	*	TWD
1FMRU16W11LE	T/83	*	TWD
1FMRU17L01LA	T/83	*	TWD
1FMRU16W21LE	T/85	*	TWD
1FMRU16W31LE	T/83	*	TWD
1FMRU16W21LE	T/83	*	TWD
1FMRU16W41LE	T/83	*	TWD
1FMRU17L81LA	T/83	*	TWD
1FMRU16W01LE	T/83	*	TWD
1FMRU17W71LE	T/85	*	TWD
1FMRU16W01LA	T/80	*	TWD
1FMRU17L21LB	T/83	*	TWD
1FMRU16W11LE	T/83	*	TWD
1FMRU17W51LE	T/80	*	TWD
1FMRU16L71LA	T/80	*	TWD
1FMRU17W51LE	T/83	*	TWD
1FMRU17W11L	T/83	*	TWD
1FMRU16W91L	T/83	*	TWD
1FMRU16W21L	T/83	*	TWD
1FMRU17L51LB	T/83	*	TWD
1FMRU17W11L	T/83	*	TWD
1FMRU17L01LB	T/83	*	TWD
1FMRU17W21L	T/85	*	TWD
1FMRU16W71L	T/83	*	TWD

K004-011 11924

1FMRU17L1L		T/BS	*	T/WD
1FMRU16W7L		T/BS	*	T/WD
1FMRU17L01L		T/BS	*	T/WD
1FMRU16W81L		T/BS	*	T/WD
1FMRU16L51L		T/BS	*	T/WD
1FMRU16W91L		T/BS	*	T/WD
1FMRU16WX1L		T/BS	*	T/WD
8LMEU27R31L		T/BA	*	T/WB
8LMEU27R41L		T/BA	*	T/WB
1FMRU16W21L		T/BS	*	T/WD
1FMRU16L61L		T/BS	*	T/WA
8LMPU26R11L		T/BA	*	T/WD
1FMRU17L51L		T/BS	*	T/WD
1FMRU16W21L		T/BS	*	T/WD
1FMRU16L81L		T/BS	*	T/WD
1FMRU16WX1L		T/BS	*	T/WD
1FMRU16L71L		T/BS	*	T/WA
8LMPU26R21L		T/BA	*	T/WD
1FMRU16W21L		T/BS	*	T/WD
1FMRU16W81L		T/BS	*	T/WD
8LMPU26R31L		T/BA	*	T/WD

TBL01Esped-Navalhistorical_VBR_SERIES_CD	TBL01Esped-Navalhistorical_DRME_CD	TBL01Esped-Navalhistorical_ENG_CD	Days between claims	Miles between claims
T/EF	T/B	T/VN	34	1821
T/EF	T/B	T/VZ	38	2143
T/EL	T/B	T/WC	25	1344
T/EF	T/B	T/VN	140	10710
T/EF	T/E	T/VZ	246	8075
T/EL	T/E	T/WC	35	8913
T/EL	T/E	T/WC	175	8374
T/EF	T/E	T/VZ	253	7879
T/EF	T/E	T/VZ	72	5275
T/EF	T/B	T/VN	79	3787
T/EF	T/B	T/VN	128	6081
T/EF	T/B	T/VN	164	4964
T/EF	T/B	T/VN	62	2880
T/EF	T/B	T/VN	188	7142
T/EF	T/B	T/VZ	229	6378
T/EF	T/B	T/VN	60	3010
T/EF	T/B	T/VN	47	2882
T/EF	T/B	T/VZ	62	4041
T/EF	T/B	T/VN	62	2880
T/EF	T/B	T/VN	112	7208
T/EF	T/E	T/VZ	140	3219

NOVA-011 11828

T/EF	T/B	TAZ	117	2284
T/EF	T/B	TAZ	120	10501
T/EF	T/B	TAZ	112	9010
T/EF	T/B	TAM	69	1980
T/EF	T/B	TAZ	54	1273
T/EF	T/B	TAZ	54	1273
T/EF	T/B	TAZ	66	3070
T/EF	T/B	TAZ	66	3070
T/EF	T/B	TAM	211	9424
T/EF	T/B	TAM	264	6676
T/EF	T/B	TAZ	152	8038
T/EF	T/B	TAZ	34	1251
T/EF	T/B	TAZ	60	2041
T/EF	T/B	TAZ	160	11997
T/EF	T/B	TAM	91	2512
T/EF	T/B	TAM	132	4917
T/EF	T/B	TAM	155	6800
T/EF	T/B	TAM	60	2407
T/EF	T/E	TAZ	118	6997
T/EF	T/B	TAM	137	6366
T/EF	T/B	TAM	58	2907
T/EF	T/B	TAM	128	3682
T/EF	T/E	TAZ	64	2887
T/EF	T/B	TAM	194	4887

T/EL	T/B	T/WC	159	8767
T/EL	T/B	T/WC	178	8304
T/EL	T/B	T/WC	48	2721
T/EL	T/E	T/WC	49	4278
T/EL	T/E	T/WC	144	4282
T/EF	T/E	T/VZ	80	7843
T/EF	T/E	T/VN	148	11681
T/EF	T/E	T/VN	202	8184
T/EF	T/B	T/VZ	162	9080
T/EF	T/B	T/VN	108	8144
T/EF	T/B	T/VN	22	3895
T/EF	T/B	T/VN	157	8089
T/EF	T/B	T/VN	35	1188
T/EF	T/B	T/VN	148	7847
T/EF	T/B	T/VN	180	9441
T/EF	T/B	T/VN	88	5085
T/EF	T/B	T/VN	182	7588
T/EF	T/B	T/VZ	147	3447
T/EF	T/B	T/VN	154	8086
T/EL	T/B	T/WC	83	2827
T/EL	T/E	T/WC	115	8842
T/EL	T/E	T/WC	48	3038
T/EL	T/B	T/WC	127	6737
T/EL	T/B	T/WC	237	18278
T/EL	T/B	T/WC	93	4768
T/EF	T/B	T/VN	88	8078
T/EF	T/B	T/VZ	183	8380
T/EF	T/B	T/VZ	48	4278

ROSA-011 11928

TJEF	TJF	TJN	199	7748
TJEF	TJF	TJN	173	8629
TJEF	TJF	TJZ	111	3737
TJEF	TJE	TJN	143	9687
TJEF	TJF	TJZ	37	1758
TJEF	TJF	TJZ	139	7341
TJEF	TJF	TJZ	213	3487
TJEL	TJF	TJWC	91	2993
TJEL	TJF	TJWC	130	8677
TJEF	TJF	TJN	154	8499
TJEL	TJE	TJWC	35	1233
TJEL	TJE	TJWC	89	1882
TJEF	TJE	TJZ	146	3822
TJEF	TJE	TJZ	220	13484
TJEF	TJE	TJZ	288	30471
TJEL	TJE	TJWC	48	3308
TJEF	TJE	TJN	224	11295
TJEF	TJF	TJN	132	11887
TJEF	TJE	TJN	215	3303
TJGF	TJF	TJN	199	4629
TJGF	TJF	TJZ	199	6782
TJEF	TJF	TJN	199	2491
TJGF	TJF	TJZ	83	6216
TJEF	TJF	TJN	98	8079
TJEF	TJF	TJZ	144	3118

T/EF	T/B	TVZ	68	2288
T/EF	T/B	TVZ	192	7806
T/EF	T/B	T/VN	118	4113
T/EL	T/E	T/WC	40	1486
T/EF	T/E	T/VN	267	5780
T/EF	T/E	T/VN	111	2886
T/EF	T/E	T/VN	148	6314
T/EL	T/E	T/WC	212	19488
T/EF	T/E	T/VN	30	2382
T/EF	T/E	T/VN	32	1854
T/EF	T/E	TVZ	123	3082
T/EF	T/E	TVZ	84	2840
T/EF	T/E	T/VN	157	5884
T/EF	T/E	T/VN	83	5774
T/EL	T/E	T/WC	38	3158
T/EL	T/E	T/WC	138	4410
T/EL	T/E	T/WC	142	5288
T/EF	T/E	TVZ	123	6887
T/EF	T/E	T/VN	77	4180
T/EF	T/E	TVZ	84	2147
T/EL	T/E	T/WC	118	6344
T/EF	T/B	T/VN	57	8418
T/EL	T/E	T/WC	108	4681
T/EF	T/E	T/VN	70	4991
T/EF	T/B	T/VN	238	11157
T/EF	T/B	TVZ	113	7884

ROG-01A 11830

TAF	TB	TAN	138	2271
TAF	TB	TAN	228	6389
TAF	TB	TAN	286	11284
TAF	TB	TAZ	290	13726
TAF	TE	TAN	77	7884
TAF	TB	TAZ	128	7876
TAF	TE	TAN	117	6128
TAF	TE	TAZ	181	4028
TAF	TE	TAN	122	5713
TAL	TE	TAC	88	3667
TAF	TE	TAZ	88	3018
TAF	TB	TAN	167	10187
TAF	TE	TAZ	126	5622
TAF	TB	TAN	118	4284
TAF	TE	TAN	204	4291
TAF	TE	TAZ	57	3573
TAL	TE	TAC	111	3656
TAL	TE	TAC	83	3416
TAL	TE	TAC	58	4481
TAL	TE	TAC	77	1883
TAL	TE	TAC	188	6042
TAF	TB	TAN	84	3271
TAF	TB	TAN	44	1288
TAF	TE	TAZ	187	7888
TAF	TB	TAZ	31	2103
TAF	TB	TAZ	188	2878

TIEF	TIB	TNZ	73	1439
TIEL	TIB	TANC	88	8520
TIEF	TIE	TNZ	108	3124
TIEL	TIE	TANC	52	3180
TIEL	TAE	TANC	126	8073
TIEF	TIB	TAN	190	5836
TIEF	TIB	TNZ	87	4322
TIEL	TIB	TANC	91	8018
TIEF	TIE	TNZ	232	13878
TIEF	TIB	TNZ	147	7374
TIEF	TIB	TAN	244	7328
TIEF	TAE	TNZ	48	1857
TIEF	TIB	TAN	74	5080
TAEF	TIB	TAN	72	3443
TAEF	TIE	TNZ	105	4563
TAEF	TIB	TAN	188	7184
TAEF	TIB	TNZ	247	8004
TAEF	TIB	TAN	54	3487
TAEF	TIB	TAN	128	3237
TAEF	TIE	TNZ	173	4365
TAEF	TIB	TAN	88	2887
TAEF	TIB	TNZ	73	1644
TAEF	TIB	TAN	108	4744
TAEF	TIB	TNZ	114	5788
TAEF	TIB	TNZ	231	9879
TIEF	TIB	TAN	225	13428
TAEF	TIB	TAN	188	4821

TAF	TB	TAN	42	4223
TAF	TB	TAN	118	7874
TAF	TB	TAN	236	7706
TAF	TB	TAN	46	1685
TAF	TB	TAN	81	1099
TAF	TB	TAN	96	3187
TAF	TB	TAZ	128	8059
TAF	TB	TAN	248	11149
TAF	TB	TAN	82	2891
TAF	TB	TAN	288	7410
TAF	TB	TAN	250	5804
TAF	TB	TAZ	132	8512
TAF	TB	TAN	138	7899
TAF	TB	TAN	183	8416
TAF	TB	TAN	101	3728
TAF	TB	TAZ	41	3027
TAF	TB	TAN	136	8340
TAF	TB	TAN	228	10198
TAF	TB	TAZ	86	2688
TAF	TB	TAN	48	4020
TAF	TB	TAN	133	7820
TAF	TB	TAN	219	4936
TAF	TB	TAN	83	1884
TAF	TB	TAZ	58	3128
TAF	TB	TAN	121	4870
TAF	TB	TAZ	247	8485
TAF	TB	TAN	38	2487
TAF	TB	TAN	188	8882

ROD-011 11833

T/EF	T/B	T/VZ	289	8306
T/EF	T/B	T/VN	104	3448
T/EF	T/B	T/VZ	60	2298
T/EF	T/B	T/VN	62	3770
T/EF	T/B	T/VZ	66	8107
T/EF	T/B	T/VN	250	18068
T/EF	T/B	T/VN	108	2078
T/EL	T/B	T/VN	178	7104
T/EL	T/B	T/VN	344	8402
T/EF	T/B	T/VN	70	1016
T/EF	T/E	T/VZ	146	8592
T/EL	T/E	T/VN	208	11078
T/EF	T/B	T/VZ	58	2577
T/EF	T/B	T/VN	58	3811
T/EF	T/E	T/VZ	248	1738
T/EF	T/E	T/VZ	274	5848
T/EF	T/B	T/VN	250	18487
T/EF	T/E	T/VZ	121	8831
T/EL	T/E	T/VN	68	4886
T/EF	T/B	T/VN	48	7087
T/EF	T/E	T/VN	132	5124
T/EL	T/E	T/VN	181	9381

TBL2001 ExpedLF ID	TBL2001 ExpedLF MCL YR	TBL2001 ExpedLF SORT INDEX	TBL2001 ExpedLF TRANS CD	TBL2001 ExpedLF PLANT CD	TBL2001 ExpedLF PROD DT	TBL2001 ExpedLF_WRTY_START DT	TBL2001 ExpedLF_NAME	TBL2001 ExpedLF DOC NUM
136	2001	484	T/DU	AP	2/2/2001	3/17/2001	SUNNY KING FORD	18950181
328	2001	883	T/DE	AP	4/27/2001	8/22/2001	WOODY ANDERSON FORD	8444852
51	2001	127	T/DE	AP	1/6/2001	8/17/2001	RAY PEARMAN FORD OF WEST MEMPHIS	2085301
184	2001	620	T/DU	AP	4/24/2001	8/8/2001	W & W FORD SALES	8788905
384	2001	983	T/DE	AP	3/14/2001	8/14/2001		6160851
50	2001	58	T/DE	AP	3/7/2001	3/29/2001	FIESTA LINCOLN-MERCURY	3365401
14	2001	30	T/DE	AP	3/3/2001	8/9/2001	FIESTA LINCOLN-MERCURY	3367401
40	2001	261	T/DE	AP	10/28/2000	11/30/2000	DON SANDERSON FORD, INC.	88088101
886	2001	882	T/DE	AP	4/27/2001	8/16/2001	LOU GRUBB FORD	3511651
4	2001	201	T/DU	AP	4/14/2001	8/25/2001	LOU GRUBB FORD	3430851
216	2001	638	T/DU	AP	4/15/2001	8/25/2001	LOU GRUBB FORD	4477652
197	2001	593	T/DU	AP	2/1/2001	3/31/2001	NORTH COUNTY FORD	248038A
237	2001	661	T/DU	AP	3/16/2001	8/12/2001	REDLANDS FORD	7481851
286	2001	679	T/DU	AP	3/31/2001	10/10/2001	REDLANDS FORD	7286752
324	2001	881	T/DE	AP	11/20/2000	1/28/2001	BEVERLY HILLS FORD	16152101
183	2001	680	T/DU	AP	4/29/2001	5/28/2001	LITHIA FORD OF CONCORD	353877A
277	2001	771	T/DU	AP	4/23/2001	6/30/2001	PASADENA FORD, INC.	3338853
78	2001	337	T/DE	AP	4/24/2001	7/17/2001	MOSE BROS. FORD	1988481
258	2001	658	T/DU	AP	4/14/2001	7/7/2001	CERRITOS FORD	28653002
16	2001	227	T/DU	AP	9/30/2000	12/22/2000	CERRITOS FORD	28234801
344	2001	638	T/DE	AP	8/20/2000	11/21/2000	CERRITOS FORD	27271004
286	2001	797	T/DE	AP	2/3/2001	8/20/2001	PACIFIC FORD	1910281
81	2001	280	T/DE	AP	8/14/2001	7/8/2001	PACIFIC FORD	1750351
283	2001	818	T/DE	AP	8/24/2000	1/8/2001	FIESTA FORD, INC.	8499851
127	2001	452	T/DU	AP	4/6/2001	8/25/2001	FORD WEST	6188451

2004-611 11593

34	2001	234	T/DE	AP	4/4/2001	8/6/2001	EL CAJON FORD	628851
34	2001	234	T/DE	AP	4/4/2001	8/2/2001	EL CAJON FORD	628851
311	2001	862	T/DE	AP	4/4/2001	8/5/2001	EL CAJON FORD	6540151
311	2001	862	T/DE	AP	4/4/2001	8/5/2001	EL CAJON FORD	6540151
272	2001	767	T/DU	AP	9/22/2000	11/1/2000	KEN BRADY FORD - CARLSBAD	6320881
168	2001	526	T/DU	AP	2/27/2001	7/5/2001	BOB BAKER FORD- MISSION VALLEY	408177A
292	2001	818	T/DE	AP	10/17/2000	11/13/2000	BOB WONDRIES FORD	248676A
58	2001	268	T/DE	AP	2/6/2001	4/30/2001	PEYTOR CHAMER	6442881
308	2001	658	T/DE	AP	10/14/2000	3/18/2001	GALPIN FORD	6052251
355	2001	908	T/DE	AP	4/7/2001	6/9/2001	GALPIN FORD	633584
134	2001	487	T/DU	AP	1/21/2001	5/12/2001	ED BUTTS FORD	6848161
150	2001	503	T/DU	AP	1/20/2001	3/2/2001	FRITTS FORD	948661
208	2001	611	T/DU	AP	3/30/2001	4/22/2001	AIRPORT MARINA FORD	25807501
261	2001	703	T/DU	AP	4/23/2001	7/28/2001	FULLER FORD	177581B
80	2001	297	T/DE	AP	12/18/2000	1/5/2001	FOLDSOM LAKE FORD	62871402
20	2001	229	T/DU	AP	3/6/2001	5/11/2001	HAYWARD FORD	38931802
270	2001	760	T/DU	AP	2/6/2001	2/8/2001	BIG VALLEY FORD	4284601
248	2001	668	T/DU	AP	4/22/2001	5/23/2001	MELROSE FORD	7150001
357	2001	668	T/DE	AP	4/19/2001	7/18/2001	GEWENK FORD	18233801
172	2001	638	T/DU	AP	8/11/2000	10/24/2000	VISTA FORD	6725881
68	2001	172	T/DE	AP	1/4/2001	5/27/2001	PALM SPRINGS	058548C
8	2001	38	T/DE	AP	10/25/2000	2/4/2001	VISTA LINCOLN-	6328851
57	2001	142	T/DE	AP	10/22/2000	11/22/2000	DOWNEY LINCOLN MERCURY	078170A
31	2001	70	T/DE	AP	2/3/2001	5/23/2001	BURT LINCOLN MERCURY	100814B
4	2001	22	T/DE	AP	4/19/2001	11/27/2001	RUMPF LINCOLN MERCURY, INC.	133758B
54	2001	312	T/DE	AP	4/18/2001	6/2/2001	HERTZ RAC - DENVER	44713701
101	2001	378	T/DU	AP	11/11/2000	3/13/2001	RAY BERAHPIN FORD INC	667082
18	2001	118	T/DU	AP	2/12/2001	2/15/2001	CHAPMAN FORD SALES	18833801
71	2001	318	T/DE	AP	4/20/2001	10/22/2001	JARRETT-BOOP FORD	796810B
223	2001	858	T/DU	AP	10/26/2000	3/17/2001	COURTEBY FORD	7067802
284	2001	727	T/DU	AP	8/20/2000	2/22/2001	MARDONE FORD	518450C
286	2001	728	T/DU	AP	8/20/2000	2/22/2001	MAROCNE FORD	527264A

R004-011 11898

219	2001	896	T/OU	AP	4/23/2001	8/2/2001	GREENWAY FORD, INC.	7404461
229	2001	871	T/OU	AP	4/17/2001	4/25/2001	GREENWAY FORD, INC.	8419882
23	2001	282	T/OU	AP	10/21/2000	3/2/2001	GARDNER FORD-MERCURY, INC.	0883408
207	2001	818	T/OU	AP	4/12/2001	8/16/2001	DON REID FORD, INC.	1324751
149	2001	498	T/OU	AP	3/2/2001	7/20/2001	BRANDON FORD	2970131
70	2001	814	T/DE	AP	4/30/2001	5/25/2001	PLANTATION FORD	8748781
14	2001	219	T/OU	AP	3/18/2001	5/29/2001	ERINE HAIRE FORD, INC.	7478181
43	2001	117	T/DE	AP	1/18/2001	7/26/2001	CENTRAL FLORIDA LINCOLN MERCUR	3782854
7	2001	17	T/DE	AP	2/11/2001	7/10/2001	CENTRAL FLORIDA	4588153
5	2001	29	T/DE	AP	8/28/2000	1/14/2001	PT LAUDERDALE LHM	2921336
30	2001	128	T/DE	AP	2/13/2001	8/24/2001	MARGATE LINCOLN	2918145
64	2001	488	T/DE	AP	2/26/2001	2/26/2001	MARGATE LINCOLN	2871244
80	2001	148	T/DE	AP	10/30/2000	7/26/2001	POMPANO LINCOLN	2818818
273	2001	788	T/OU	AP	8/21/2000	3/16/2001	TEAM FORD OF MARIETTA	8467883
81	2001	287	T/DE	AP	3/8/2001	8/8/2001	RIVERSIDE FORD INC	1850481
287	2001	788	T/DE	AP	1/18/2001	2/18/2001	AKINS FORD	8488796
178	2001	848	T/OU	AP	4/7/2001	8/30/2001	FREEWAY FORD INC	7988151
158	2001	888	T/OU	AP	12/8/2000	2/28/2001	JIM TIDWELL'S WORLD FORD	8873881
318	2001	878	T/DE	AP	2/6/2001	6/7/2001	JOHN BLEAKLEY FORD	7483881
88	2001	388	T/OU	AP	10/15/2000	10/31/2000	ALLAN VIGIL FORD	2786881
823	2001	888	T/DE	AP	4/28/2001	8/4/2001	LEWINNETT PLACE	8801883
312	2001	888	T/DE	AP	2/1/2001	8/1/2001	LEWINNETT PLACE	8812402
313	2001	888	T/DE	AP	10/28/2000	8/18/2001	J.C. LEWIS MOTOR	30834802
48	2001	718	T/DE	AP	4/17/2001	8/18/2001	BARANCO LINCOLN-PUGMIRE LINCOLN-MERCURY INC	3488101
88	2001	147	T/DE	AP	3/12/2001	18/15/2001	MERCURY INC	6881081
180	2001	885	T/OU	AP	2/8/2001	3/14/2001	WINDWARD FORD	8804753
38	2001	87	T/DE	AP	3/17/2001	4/18/2001	THESSER MOTORS INC	8832701
38	2001	88	T/DE	AP	4/19/2001	8/28/2001	LITHIA LINCOLN MERCURY OF BOIS FORT LAKE FORD	388888A
44	2001	278	T/DE	AP	4/22/2001	1/12/2001	MERCURY, INC.	800701
43	2001	288	T/DE	AP	1/20/2001	8/20/2001	LANDMARK FORD, INC.	18780702
84	2001	253	T/DE	AP	3/1/2001	4/2/2001	NORTHYOWN FORD	8418801
1	2001	2	T/DE	AP	10/14/2000	8/7/8/01	LINDSAY LINCOLN-MERCURY, INC.	781153
100	2001	373	T/OU	AP	2/8/2001	8/1/2001	CHAMPTON FORD OF ALEXANDRIA	082118A
287	2001	738	T/OU	AP	4/24/2001	7/14/2001	MARINE MYERS FORD LINCOLN MERC	3118802
105	2001	390	T/OU	AP	3/8/2001	10/3/2001	PAUL MILLER FORD, INC.	13418701
245	2001	888	T/OU	AP	8/8/2001	5/31/2001	ALL STAR FORD	883284A

R004-011 11937

40	2001	289 T/DE	AP	1/17/2001	8/22/2001	ADVANTAGE FORD	01854C
170	2001	836 T/OU	AP	10/24/2000	11/7/2000	GRAY FORD MERCURY	15570802
337	2001	814 T/DE	AP	11/8/2000	4/17/2001	ALL STAR FORD	240647A
282	2001	704 T/OU	AP	4/18/2001	5/6/2001	HUB CITY FORD, INC.	587557
62	2001	251 T/DE	AP	4/30/2001	5/24/2001	LAMARQUE FORD INC	181755E
382	2001	844 T/DE	AP	12/8/2000	8/1/2001	S-STYLER-CORLEY	11136601
88	2001	364 T/DE	AP	10/13/2000	8/1/2001	LEESVILLE FORD	8810801
143	2001	482 T/OU	AP	4/10/2001	11/9/2001	OLBRIK FORD, INC.	342468B
4	2001	4 T/DE	AP	4/21/2001	8/8/2001	BAY STATE LINCOLN-	4851201
120	2001	434 T/OU	AP	4/20/2001	12/4/2001	NORRIS FORD OF EASTON, LLC	2975251
97	2001	267 T/OU	AP	8/10/2000	10/12/2000	ROCKLAND FORD LINCOLN-MERCURY	8388601
102	2001	377 T/OU	AP	4/20/2001	8/7/2001	ROME FORD SALES	25416801
38	2001	76 T/DE	AP	2/2/2001	8/18/2001	BRIGHTON FORD- MERCURY, INC.	154422A
21	2001	117 T/OU	AP	3/3/2001	9/20/2001	GENE BUTMAN FORD SLS INC	2852401
186	2001	283 T/OU	AP	4/25/2001	8/20/2001	FAIRLANE FORD SALES, INC.	107100B
843	2001	828 T/DE	AP	1/4/2001	8/25/2001	VICTORY FORD	5284201
354	2001	864 T/DE	AP	4/19/2001	5/29/2001	SIGNATURE FORD LINCOLN-MERCURY	075768B
89	2001	368 T/OU	AP	4/22/2001	10/9/2001	DUTCHER FORD SALES, INC.	7048001
115	2001	425 T/OU	AP	4/26/2001	11/20/2001	SCOTT MCNAMARA FORD MERCURY OF	944803C
12	2001	20 T/DE	AP	12/21/2000	8/4/2001	VARSITY LINCOLN- MERCURY INC	8883301
28	2001	50 T/DE	AP	1/28/2001	3/5/2001	VARSITY LINCOLN-	8758202
41	2001	87 T/DE	AP	2/18/2001	8/15/2001	MOMENTUM LINCOLN	7771863
48	2001	251 T/DE	AP	3/11/2001	3/31/2001	INVER GROVE FORD	25848001
116	2001	430 T/OU	AP	3/6/2001	5/16/2001	FRIENDLY FORD, INC.	214230C
350	2001	848 T/DE	AP	5/1/2001	5/8/2001	BUJ SHELL FORD INC	9548201
5	2001	10 T/DE	AP	4/13/2001	9/6/2001	PAUL CERAME UNIC- MERC INC	215486B
263	2001	728 T/OU	AP	9/27/2000	5/3/2001	WATSON QUALITY FORD	150431A
8	2001	18 T/DE	AP	1/28/2001	1/31/2001	HAVRE FORD LINCOLN	078047A
81	2001	358 T/OU	AP	4/17/2001	4/30/2001	HILBISH MOTOR CO	6887101
217	2001	634 T/OU	AP	4/21/2001	5/31/2001	CRESCENT FORD INC	20763601
94	2001	308 T/DE	AP	4/8/2001	8/28/2001	HARRELSON FORD, HARRELSON FORD, INC.	4870182
247	2001	697 T/OU	AP	4/24/2001	8/18/2001	HARRELSON FORD, INC.	6030862
128	2001	445 T/OU	AP	4/23/2001	8/3/2001	HARRELSON FORD, INC.	5818152

204	2001	803	T/OU	AP	4/23/2001	6/17/2001	HARRELSON FORD, INC.	5421952
308	2001	860	T/DE	AP	3/17/2001	3/30/2001	PECHELIS FORD	30823401
28	2001	182	T/OU	AP	6/15/2000	3/10/2001	CROWN FORD	500051
283	2001	768	T/DE	AP	4/24/2001	8/28/2001	HASTINGS FORD, INC.	0888048
92	2001	388	T/OU	AP	4/23/2001	6/28/2001	JOHN MARVEL, INC.	247851A
338	2001	921	T/DE	AP	10/25/2000	1/6/2001	MAGARINO FORD-MERCURY, INC.	3887301
18	2001	113	T/OU	AP	1/2/2001	1/27/2001	OASIS FORD	81982
27	2001	83	T/DE	AP	1/22/2001	3/24/2001	MAPLEGRIST LINCOLN	8041108
546	2001	848	T/DE	AP	2/28/2001	3/7/2001	TOMS FORD, INC.	507122A
253	2001	708	T/OU	AP	4/14/2001	6/14/2001	FORD COUNTRY	1511752
870	2001	868	T/DE	AP	4/24/2001	6/22/2001	JONES-WEST FORD	3087101
202	2001	802	T/OU	AP	4/28/2001	5/28/2001	GALDIN FORD	8823581
106	2001	412	T/OU	AP	8/4/2001	7/18/2001	COUNTRY FORD LTD	2887253
384	2001	888	T/DE	AP	1/8/2001	2/27/2001	BAYVILLE FORD	4090801
9	2001	18	T/DE	AP	2/3/2001	2/17/2001	ROCKLAND LINCOLN	1288182
2	2001	3	T/DE	AP	4/25/2001	7/27/2001	COURTESY LINCOLN	1143880A
18	2001	21	T/DE	AP	1/28/2001	7/23/2001	DANA MOTORS LTD	8842882
38	2001	77	T/DE	AP	2/4/2001	6/28/2001	COUNTRY LINC-MERC	8885482
10	2001	20	T/DE	AP	1/28/2001	8/20/2001	COUNTRY LINC-MERC	8885483
211	2001	818	T/OU	AP	3/13/2001	7/20/2001	KRIEGER FORD, INC.	325442A
227	2001	883	T/OU	AP	4/28/2001	8/7/2001	GRAHAM FORD, INC.	043281A
38	2001	280	T/DE	AP	2/12/2001	6/21/2001	CRANDALL FORD, INC.	8842801
13	2001	81	T/DE	AP	4/27/2001	6/8/2001	BILLINGSLEY FORD OF LAWTON, IN	104881A
284	2001	780	T/DE	AP	4/20/2001	11/18/2001	JAMES HODGE FORD LINCOLN-MERCU	271387A
46	2001	273	T/DE	AP	8/4/2001	8/22/2001	ORC AUTO COLLECTION	888202A
48	2001	118	T/DE	AP	4/20/2001	8/28/2001	BOB RODGERS MOTOR	10824301
388	2001	884	T/DE	AP	4/24/2001	5/15/2001	LANDMARK FORD INC	438728B
21	2001	48	T/DE	AP	3/1/2001	4/7/2001	FRED BEANS FORD-LINCOLN-MERCUR	27298202
18	2001	41	T/DE	AP	2/4/2001	3/18/2001	BLOAN MOTORS INC	088712B
114	2001	432	T/OU	AP	2/1/2001	10/22/2001	BLOAN MOTORS INC	088464A
78	2001	138	T/DE	AP	4/27/2001	7/8/2001	HEMINGWAY MOTOR	888201
84	2001	184	T/DE	AP	1/30/2001	2/19/2001	ALTMAN LINCOLN	280771A
47	2001	288	T/DE	AP	4/18/2001	8/7/2001	HERTZ INC-	34488401
47	2001	274	T/DE	AP	4/28/2001	8/28/2001	TED RUSSELL FORD	32841108
21	2001	208	T/OU	AP	12/17/2000	2/7/2001	TED RUSSELL FORD INC	32888201

R084-011 11838

352	2001	654	T/DE	AP	4/30/2001	4/30/2001	LANDERS FORD	6548802
148	2001	488	T/OU	AP	3/7/2001	3/23/2001	DOBBS FORD AT WOLFCRASE	6556261
148	2001	488	T/OU	AP	3/14/2001	6/26/2001	ALL STAR FORD-MERCURY, INC.	6783502
340	2001	623	T/DE	AP	8/16/2001	8/13/2001	ALL STAR FORD-MERCURY, INC.	6814303
21	2001	288	T/OU	AP	4/18/2001	6/15/2001	WEST TEXAS FORD, INC.	6285201
28	2001	288	T/DE	AP	2/7/2001	6/31/2001	HILLCREST FORD	1273362
168	2001	538	T/OU	AP	1/28/2001	3/31/2001	PLANET FORD	15139601
24	2001	338	T/OU	AP	2/11/2001	3/31/2001	PLANET FORD	16317402
67	2001	318	T/DE	AP	1/24/2001	2/9/2001	GRAND PRAIRIE FORD, INC.	8862204
178	2001	848	T/OU	AP	4/20/2001	7/21/2001	DON DAVIS FORD, INC.	4065952
310	2001	880	T/DE	AP	4/24/2001	8/11/2001	DON DAVIS FORD, INC.	411554C
3	2001	200	T/OU	AP	4/25/2001	8/14/2001	DON DAVIS FORD, INC.	414852B
68	2001	348	T/DE	AP	4/25/2001	7/31/2001	JOHNSON BROTHERS FORD, LTD.	12815002
80	2001	338	T/DE	AP	4/14/2001	4/26/2001	BILL UTTER FORD, INC.	8188181
158	2001	671	T/OU	AP	4/28/2001	5/28/2001	TEXAN FORD	21806301
141	2001	478	T/OU	AP	4/17/2001	10/18/2001	DEWEY MOORE FORD	4864482
19	2001	228	T/OU	AP	3/5/2001	8/11/2001	WESTWAY FORD	82738201
17	2001	224	T/OU	AP	1/2/2001	5/14/2001	WESTWAY FORD	84806701
124	2001	448	T/OU	AP	4/22/2001	5/10/2001	WESTWAY FORD	86988601
128	2001	452	T/OU	AP	4/12/2001	8/10/2001	GOLDING MOTORS INC	7876351
6	2001	307	T/OU	AP	4/25/2001	8/19/2001	MAXWELL FORD	620178A
268	2001	740	T/OU	AP	4/18/2001	8/10/2001	MAXWELL FORD	684434C
68	2001	357	T/DE	AP	10/3/2000	2/20/2001	MAXWELL FORD	851042A
267	2001	710	T/OU	AP	4/12/2001	4/21/2001	COVERT FORD OF TAYLOR, INC.	680401
238	2001	678	T/OU	AP	4/8/2001	8/23/2001	JOE MYERS FORD, INC.	388059A
122	2001	441	T/OU	AP	5/10/2001	6/28/2001	BOWDEN FORD LINCOLN MERCURY CO	690871A
188	2001	618	T/OU	AP	5/1/2001	12/22/2001	CROSBY FORD SALES, INC.	206208A
48	2001	278	T/DE	AP	12/1/2000	2/8/2001	COVERT FORD, INC.	1188703
278	2001	778	T/OU	AP	4/10/2001	5/31/2001	COVERT FORD, INC.	3018602
11	2001	215	T/OU	AP	4/18/2001	7/31/2001	MCREE FORD, INC.	427429B

282	2001	787	T/OU	AP	5/27/2001	5/7/2001	BOB PAGAN FORD, INC.	119288C
78	2001	328	T/DE	AP	4/22/2001	5/12/2001	CHARLIE THOMAS	108817A
288	2001	747	T/OU	AP	3/9/2001	5/23/2001	CHARLIE THOMAS FORD INC	122578B
8	2001	68	T/OU	AP	4/24/2001	8/28/2001	LEIF JOHNSON FORD TRUCK CITY	64460802
300	2001	887	T/DE	AP	10/24/2000	11/5/2000	GAMES MOTOR COMPANY, INC.	826824E
16	2001	228	T/OU	AP	1/24/2001	3/7/2001	MAC HAK FORD	158283B
82	2001	251	T/OU	AP	3/10/2001	3/8/2001	CHAMPION FORD, INC.	224482A
138	2001	477	T/OU	AP	4/28/2001	8/1/2001	CHAMPION FORD, INC.	224381A
130	2001	487	T/OU	AP	3/30/2001	5/18/2001	BLUESONNET MOTORS, INC.	30904801
48	2001	278	T/DE	AP	4/18/2001	5/15/2001	HELFMAN FORD INC	768381
31	2001	280	T/OU	AP	3/18/2001	3/27/2001	HELFMAN FORD INC	747881
88	2001	388	T/DE	AP	4/12/2001	5/28/2001	JACK RDACH FORD	788801
5	2001	282	T/OU	AP	4/24/2001	5/17/2001	TOWN EAST FORD	775884A
28	2001	188	T/OU	AP	10/23/2000	11/7/2000	TOWN EAST FORD	789088A
31	2001	343	T/DE	AP	1/28/2001		MIKE CRAIG FORD	28201
181	2001	688	T/OU	AP	2/8/2001	7/7/2001	MESA FORD	84148001
88	2001	388	T/DE	AP	9/13/2000	11/30/2000	LONE STAR FORD	28880801
198	2001	588	T/OU	AP	2/4/2001	3/7/2001	LONE STAR FORD	28878802
307	2001	888	T/DE	AP	1/4/2001	5/12/2001	LONE STAR FORD	28818801
188	2001	588	T/OU	AP	2/4/2001	3/7/2001	LONE STAR FORD	28878802
128	2001	481	T/OU	AP	4/12/2001	5/23/2001	FORD COUNTRY OF LEWISVILLE	1088582
83	2001	182	T/DE	AP	4/21/2001	7/20/2001	BAYWAY LINCOLN	8408381
88	2001	148	T/DE	AP	4/18/2001	5/12/2001	JACK O DIAMONDS	18828801
280	2001	718	T/OU	AP	3/13/2001	3/13/2001	BANKSTON L-LI, INC.	2982201
38	2001	280	T/DE	AP	4/20/2001	8/29/2001	BANKSTON L-LI, INC.	3823701
18	2001	31	T/DE	AP	2/1/2001	3/20/2001	BANKSTON L-LI, INC.	3825482
87	2001	311	T/DE	AP	11/30/2000	12/11/2000	CASA FORD, INC.	281288A
288	2001	708	T/OU	AP	3/21/2001	4/17/2001	CASA FORD, INC.	287888C
83	2001	353	T/DE	AP	4/18/2001	10/27/2001	ED KENLEY FORD INC	8748381
37	2001	248	T/DE	AP	5/10/2001	5/12/2001	JERRYS FORD SALES	28883801

137	2001	470	TDU	AP	10/02/2000	12/29/2000	FREEDOM FORD HAMPTON, INC.	278785A
80	2001	558	TDE	AP	1/17/2001	1/28/2001	GRISHY FORD	10384581
2	2001	3	TDE	AP	4/17/2001	5/2/2001	HERTZ RAC -	42927681
112	2001	420	TDU	AP	4/12/2001	6/3/2001	SINO-COUNTRY FORD, INC.	4682001
20	2001	118	TDU	AP	3/8/2001	6/9/2001	KORUM FORD INC	34803801
38	2001	78	TDE	AP	3/28/2001	4/10/2001	OLYMPIC LINCOLN-	18818001

TBL2001 ExpedLF PH NUM	TBL2001 ExpedLF WCC CD	TBL2001 ExpedLF_PART_NUM_C AUS PRUF	TBL2001 ExpedLF_PART_NUM_C AUS BASE	TBL2001 ExpedLF_PART_NUM_C AUS SUFF	TBL2001 ExpedLF_CUST_CONC_ CD	TBL2001 ExpedLF_COND_CD	Repair Month	TBL2001 ExpedLF RPR_DT
8315300	6R02	1L7Z	7861203	BAB	525	42	Dec-01	12/21/2001
8369441	6R02	FA6Z	7861203	BGE	540	42	Oct-01	10/24/2001
8367481	6R02	1L7Z	7861203	CAA	540	42	Sep-01	8/27/2001
7368800	6R02	1L7Z	7861203	BAB	540	42	Dec-01	12/12/2001
8582458	6R02	1L2Z	7861203	CAA	520	42	Mar-02	3/21/2002
8134800	6R02	1L7Z	7861203	CAA	520	41	Jan-02	1/11/2002
8134800	6R02	1L7Z	7861203	CAA	525	42	Jan-02	1/11/2002
8428800	6R02	1L7Z	7861203	BAA	528		May-02	5/2/2002
9812003	6R02	1L7Z	7861203	BAA	540	43	Dec-01	12/18/2001
9813333	6R02	1L7Z	7861203	BAA	540	42	Dec-01	12/11/2001
9818833	6R02	1L7Z	7861203	BAA	525	38	Mar-02	3/18/2002
9459800	6R02	1L7Z	7861203	BAB	540	42	Jan-02	1/8/2002
7853211	6R02	1L7Z	7861203	BAA	521	42	Oct-01	10/8/2001
7833211	6R02	1L7Z	7861203	BAB	525	42	Jan-02	1/28/2002
2783573	6R02	1L7Z	7861203	BAA	528	41	May-02	5/1/2002
8645000	6R02	1L7Z	7861203	BAB	540	41	Nov-01	11/30/2001
8638678	6R02	1L7Z	7861203	BAA	525	42	Dec-01	12/12/2001
8281212	6R02	1L7Z	7861203	BAA	540	1	Nov-01	11/7/2001
8835554	6R02	1L7Z	7861203	BAB	525	42	Sep-01	8/18/2001
8438804	6R02	1L7Z	7861203	BAA	540	43	Nov-01	11/8/2001
8438804	6R02	1L7Z	7861203	CAA	528	43	Mar-02	3/27/2002
8278130	6R02	1L7Z	7861203	BAB	525	42	Jan-02	1/28/2002
8278130	6R02	1L7Z	7861203	CAA	528	42	Jan-02	1/14/2002
7726000	6R02	1L7Z	7861203	BAB	540	42	Jan-02	1/28/2002
7808873	6R02	1L7Z	7861203	BAB	540	42	Dec-01	12/27/2001

5768183	BR02	1L7Z	7861203 AAA	840		42	Aug-01	8/20/2001
5768183	BR02	1L7Z	7861203 AAA	840		42	Aug-01	8/23/2001
5768583	BR02	1L7Z	7861203 BAA	840		42	Sep-01	8/24/2001
5768583	BR02	1L7Z	7861203 BAA	840		42	Sep-01	8/24/2001
489171	BR02	1L7Z	7861203 AAH	326		1	Apr-02	4/25/2002
2676901	BR02	1L7Z	7861203 CAB	826		42	Apr-02	4/26/2002
2993591	BR02	1L7Z	7861203 CAB	840		42	Mar-02	3/30/2002
7644708	BR02	1L7Z	7861203 CAA	840		42	Nov-01	11/12/2001
7672808	BR02	1L7Z	7861203 BAB	840		41	Oct-01	10/16/2001
7873500	BR02	1L7Z	7861203 BAA	826		41	Mar-02	3/18/2002
8183673	BR02	1L7Z	7861203 BAC	840		42	Nov-01	11/17/2001
	BR02	1L7Z	7861203 BAB	840		42	Jan-02	1/18/2002
6469673	BR02	1L7Z	7861203 CAB	826		42	Mar-02	3/19/2002
5082600	BR02	1L7Z	7861203 BAC	840		42	Sep-01	8/18/2001
5632000	BR02	1L7Z	7861203 CAB	826		42	Mar-02	3/22/2002
5511200	BR02	1L7Z	7861203 BAA	826		42	Dec-01	12/10/2001
5754408	BR02	1L7Z	7861203 BAC	826		42	Feb-02	2/1/2002
5548520	BR02	1L7Z	7861203 BAC	826		42	Jan-02	1/20/2002
3348500	BR02	1L7Z	7861203 BAA	840		65	Jan-02	1/30/2002
6647808	BR02	1L7Z	7861203 BAA	826		42	May-02	5/2/2002
3282102	BR02	1L7Z	7861203 CAB	826		42	Dec-01	12/24/2001
3488808	BR02	1L7Z	7861203 BAB	840		42	Feb-02	2/13/2002
6610721	BR02	1L7Z	7861203 CAA	826		42	Dec-01	12/27/2001
3488800	BR02	1L7Z	7861203 CAB	840		42	Dec-01	12/6/2001
7611580	BR02	1L7Z	7861203 BAB	840		42	Jan-02	1/14/2002
	BR02	1L7Z	7861203 AAA	840		42	Nov-01	11/7/2001
8763389	BR02	1L7Z	7861203 BAC	838		42	Apr-02	4/11/2002
6990251	BR02	1L7Z	7861203 AAB	826		42	Feb-02	2/11/2002
7524771	BR02	1L7Z	7861203 BAA	826		42	Feb-02	2/12/2002
3296200	BR02	1L7Z	7861203 BAB	826		42	Nov-01	11/17/2001
8727200	BR02	1L7Z	7861203 BAA	840		42	Dec-01	12/27/2001
8727200	BR02	1L7Z	7861203 BAA	826		42	Mar-02	3/12/2002

2788800	BR02	1L7Z	7881208	BAC	S40	42		Nov-01	11/13/2001
2783210	BR02	1L7Z	7881203	BAA	S40	42		Jan-02	1/11/2002
2843828	BR02	1L7Z	7881203	CAA	S40	7		Jan-02	1/28/2002
8447111	BR02	1L7Z	7881203	BAA	T60	42		Mar-02	3/28/2002
2483478	BR02	1L7Z	7881203	BAA	S40	42		Jan-02	1/17/2002
8942400	BR02	1L7Z	7881203	CAA	S40	42		Mar-02	3/12/2002
9336571	BR02	1L7Z	7881203	BAA	S28	42		Mar-02	3/12/2002
8414880	BR02	1L7Z	7881203	CAB	S40		41	Sep-01	8/18/2001
8414880	BR02	1L7Z	7881203	CAA	S40		41	Feb-02	2/27/2002
7782000	BR02	1L7Z	7881202	BAC	S28		42	Oct-01	10/22/2001
8782277	BR02	1L7Z	7881203	CAA	S40		42	Dec-01	12/29/2001
8782277	BR02	1L7Z	7881203	CAA	S40		42	Mar-02	3/12/2002
7828110	BR02	1L7Z	7881203	CAA	S28		42	Mar-02	3/22/2002
4221100	BR02	1L7Z	7881203	BAA	S40	42		Nov-01	11/30/2001
7428771	BR02	1L7Z	7881203	BAA	S28	42		Jan-02	1/4/2002
8878138	BR02	1L7Z	7881202	BAC	S40	42		Sep-01	9/12/2001
8834028	BR02	1L7Z	7881203	BAA	S40	42		Dec-01	12/14/2001
4275581	BR02	1L7Z	7881202	BAR	T90	1		Feb-02	2/18/2002
9418000	BR02	1L7Z	7881203	BAC	S28	42		Jan-02	1/18/2002
4717801	BR02	1L7Z	7881203	BAB	S28	42		Apr-02	4/1/2002
2742000	BR02	F36Z	7881203	BME	T60	38		Nov-01	11/28/2001
4782880	BR02	1L7Z	7881202	BAB	T60	42		Jan-02	1/7/2002
8250284	BR02	1L7Z	7881203	BAB	S40	42		Feb-02	2/16/2002
4878900	BR02	1L7Z	7881203	CAA	S40		42	Dec-01	12/11/2001
8322381	BR02	1L7Z	7881203	CAB	S40		42	Mar-02	3/9/2002
2867000	BR02	1L7Z	7881203	BAC	S28	42		Apr-02	4/4/2002
7337700	BR02	1L7Z	7881203	CAA	S40		42	Sep-01	9/4/2001
2235200	BR02	1L7Z	7881203	CAA	T90		42	Nov-01	11/1/2001
8673400	BR02	1L7Z	7881202	AAB	S40		42	Jan-02	1/9/2002
8828200	BR02	1L7Z	7881202	AAA	S28		41	Apr-02	4/26/2002
8775441	BR02	1L7Z	7881202	AAB	S28		42	Apr-02	4/28/2002
4778201	BR02	1L7Z	7881202	BAC	S40		42	Oct-01	10/12/2001
4488400	BR02	1L7Z	7881203	BAC	S40	42		Mar-02	3/13/2002
8261904	BR02	1L7Z	7881203	BAB	S28	42		Feb-02	2/11/2002
2864242	BR02	1L7Z	7881203	BAA	S28	1		Feb-02	2/18/2002
8847811	BR02	1L7Z	7881203	BAC	S28	42		Feb-02	2/18/2002

2462010	BR02	1L7Z	7881283	CAA	840	42		Jan-02	1/22/2002
4834474	BR02	1L7Z	7881283	BAA	840	42		Dec-01	12/20/2001
8778181	BR02	1L7Z	7881283	BAA	828	42		Feb-02	2/18/2002
2884500	BR02	1L7Z	7881283	BAA	807	42		Nov-01	11/13/2001
4432500	BR02	1L7Z	7881283	CAA	840	42		Jan-02	1/4/2002
7834833	BR02	1L7Z	7881283	BAB	840	42		Sep-01	9/13/2001
2383434	BR02	1L7Z	7881283	CAA	840	42		Feb-02	2/8/2002
7780070	BR02	1L7Z	7881283	BAA	828	42		Feb-02	2/28/2002
8727805	BR02	1L7Z	7881283	CAA	828	42	42	Aug-01	8/28/2001
8222900	BR02	1L7Z	7881283	BAA	828	42		Apr-02	4/10/2002
5844488	BR02	1L7Z	7881283	BAC	828	42		Feb-02	2/14/2002
5542585	BR02	1L7Z	7881283	BAB	828	42		Dec-01	12/22/2001
2271171	BR02	1L7Z	7881283	CAB	840	42		Mar-02	3/20/2002
4828881	BR02	1L7Z	7881282	AAC	840	42	42	Oct-01	10/28/2001
8488000	BR02	1L7Z	7881283	BAC	828	42		Sep-01	9/21/2001
8817038	BR02	1L7Z	7881283	CAA	840	42		Dec-01	12/17/2001
7282888	BR02	1L7Z	7881283	CAA	840	42		Dec-01	12/8/2001
9680511	BR02	1L7Z	7881283	BAB	828	42		Jun-02	1/21/2002
4289218	BR02	1L7Z	7881283	BAB	840	42		Mar-02	3/12/2002
3085300	BR02	1L7Z	7881283	CAB	840	42	42	Oct-01	10/20/2001
3088300	BR02	1L7Z	7881283	CAB	840	42	42	Feb-02	2/4/2002
3412880	BR02	1L7Z	7881283	CAA	840	42	42	Dec-01	12/8/2001
4812201	BR02	1L7Z	7881282	AAJ	828	42	42	Jan-02	1/8/2002
8834830	BR02	1L7Z	7881283	BAA	840	42		Nov-01	11/23/2001
8217478	BR02	1L7Z	7881283	BAA	840	42		Sep-01	9/20/2001
8310200	BR02	1L7Z	7881283	BAA	828	42	42	Mar-02	3/22/2002
8887000	BR02	1L7Z	7881283	BAB	828	42		Dec-01	12/17/2001
3832248	BR02	1L7Z	7881283	CAB	840	42	42	Nov-01	11/27/2001
8383121	BR02	1L7Z	7881283	BAA	840	42		Dec-01	12/4/2001
5882181	BR02	1L7Z	7881283	BAB	828	42		Apr-02	4/8/2002
5532780	BR02	1L7Z	7881283	CAA	828	42		Jan-02	1/29/2002
5822780	BR02	1L7Z	7881283	BAC	828	42		Feb-02	2/4/2002
5822780	BR02	FRZ	7881283	AAB	840	42		Apr-02	4/9/2002

	6522760	BR02	1L7Z		7861208	BAC	836		43		May-02	5/13/2002
	6466104	BR02	1L7Z		7861208	CAS	840		42		Apr-02	4/18/2002
6671121		BR02	1L7Z		7861208	AAB	840		42		Apr-02	4/5/2002
	7865114	BR02	1L7Z		7861208	BAB	803		42		Jan-02	1/31/2002
	3999700	BR02	1L7Z		7861208	BAA	840		42		Nov-01	11/27/2001
	7028000	BR02	1L7Z		7861208	CAA	825		42		Jan-02	1/23/2002
6811111		BR02	1L7Z		7861208	AAB	826		42		Feb-02	2/8/2002
		BR02	1L7Z		7861208	CAA	826		42		Mar-02	3/12/2002
	2641600	BR02	1L7Z		7861208	BAA	840		42		Oct-01	10/18/2001
	5063673	BR02	1L7Z		7861208	CAB	840		42		Jan-02	1/9/2002
	3285800	BR02	1L7Z		7861208	CAA	840		42		Jan-02	1/18/2002
	7312121	BR02	1L7Z		7861208	BAB	826		42		Feb-02	2/18/2002
	7327400	BR02	1L7Z		7861208	BAC	826		42		Feb-02	2/7/2002
	5864800	BR02	1L7Z		7861208	CAA	840		42		Dec-01	12/7/2001
8865400		BR02	1L7Z		7861208	CAB	825		42		Dec-01	12/8/2001
8477400		BR02	1L7Z		7861208	BAC	840		42		Dec-01	12/28/2001
8836700		BR02	1L7Z		7861208	CAA	818		42		Sep-01	8/27/2001
2718800		BR02	1L7Z		7861208	CAB	826		42		Dec-01	12/14/2001
2718800		BR02	1L7Z		7861208	CAA	826		1		Apr-02	4/20/2002
	6853320	BR02	1L7Z		7861208	BAA	840		42		Oct-01	10/12/2001
	4849000	BR02	1L7Z		7861208	BAB	840		42		Nov-01	11/16/2001
2983323		BR02	1L7Z		7861208	AAB	840		42		Feb-02	2/2/2002
2482900		BR02	1L7Z		7861208	AAA	840		42		Aug-01	8/17/2001
	6821345	BR02	1L7Z		7861208	BAB	840		42		Jan-02	1/2/2002
	4789000	BR02	1L7Z		7861208	BAA	840		42		Oct-01	10/6/2001
2389488		BR02	1L7Z		7861208	CAA	840		42		Nov-01	11/20/2001
	6391131	BR02	1L7Z		7861208	CAA	840		42		Nov-01	11/16/2001
3462900		BR02	1L7Z		7861208	CAA	825		42		Sep-01	9/27/2001
3632870		BR02	1L7Z		7861208	CAS	826		42		Mar-02	3/13/2002
	3632870	BR02	1L7Z		7861208	BAC	840		42		Mar-02	3/8/2002
	2945243	BR02	1L7Z		7861208	CAA	840		1		Nov-01	11/30/2001
7872224		BR02	1L7Z		7861208	CAA	840		42		Dec-01	12/18/2001
		BR02	1L7Z		7861208	AAA	826		42		Apr-02	4/2/2002
		BR02	1L7Z		7861208	CAA	826		1		Apr-02	4/2/2002
		BR02	1L7Z		7861208	AAB	826		42		Apr-02	4/1/2002

FORM-011 11947

654873	BR02	1L7Z	7881203	CAA	626	43	Feb-02	2/1/2002
8825558	BR02	1L7Z	7881203	BAC	640	1	Oct-01	10/16/2001
7202171	BR02	1L7Z	7881203	BAC	640	42	Nov-01	11/7/2001
7202171	BR02	1L7Z	7881203	BAA	640	42	Dec-01	12/20/2001
8283211	BR02	1L7Z	7881203	BAA	640	1	Feb-02	2/18/2002
2853764	BR02	1L7Z	7881203	CAA	640	1	Mar-02	3/28/2002
7183700	BR02	1L7Z	7881203	CAA	640	42	Sep-01	8/24/2001
7183700	BR02	1L7Z	7881203	BAA	640	43	Dec-01	12/18/2001
6411334	BR02	1L7Z	7881202	AAA	640	42	Jan-02	1/22/2002
2814281	BR02	1L7Z	7881203	BAA	626	43	Dec-01	12/10/2001
2814281	BR02	1L7Z	7881203	BAA	640	42	Dec-01	12/27/2001
2814281	BR02	1L7Z	7881203	BAA	626	33	Jan-02	1/24/2002
7732264	BR02	1L7Z	7881203	BAA	640	42	Nov-01	11/9/2001
3826484	BR02	1L7Z	7881203	BAA	626	42	Mar-02	3/28/2002
4872678	BR02	1L7Z	7881203	BAB	640	1	Mar-02	3/8/2002
6382816	BR02	1L7Z	7881203	BAA	626	42	Jan-02	1/23/2002
6580332	BR02	1L7Z	7881203	CAA	626	7	Sep-01	9/26/2001
6580332	BR02	1L7Z	7881203	CAA	626	38	Jan-02	1/14/2002
6580332	BR02	1L7Z	7881203	BAA	626	42	Apr-02	4/19/2002
3735707	BR02	1L7Z	7881203	BAA	640	42	Sep-01	9/28/2001
4436000	BR02	1L7Z	7881203	BAA	640	42	Dec-01	12/7/2001
4436000	BR02	1L7Z	7881203	BAB	626	1	Dec-01	12/18/2001
4436000	BR02	1L7Z	7881203	BAA	640	41	Feb-02	2/23/2002
3938000	BR02	1L7Z	7881203	BAA	626	43	Apr-02	4/2/2002
6848200	BR02	1L7Z	7881203	BAB	626	42	Nov-01	11/23/2001
6848541	BR02	1L7Z	7881203	BAC	626	43	Apr-02	4/25/2002
8517800	BR02	1L7Z	7881203	BAB	640	42	Mar-02	3/27/2002
3464343	BR02	1L7Z	7881203	CAA	640	1	Feb-02	2/9/2002
3464843	BR02	1L7Z	7881203	BAA	626	7	Feb-02	2/18/2002
3371628	BR02	1L7Z	7881203	CAA	640	42	Dec-01	12/28/2001

7445481	BR02	1L7Z	7881203	BAB	S28		1	Mar-02	3/28/2002
2714000	BR02	1L7Z	7881203	BAA	S28		41	Sep-01	9/13/2001
3714000	BR02	1L7Z	7881203	BAB	S28		33	Mar-02	3/23/2002
3120800	BR02	1L7Z	7881203	AAA	S28		42	May-02	5/1/2002
7214700	BR02	1L7Z	7881203	BAC	S30		43	Dec-01	12/8/2001
5329000	BR02	1L7Z	7881203	BAA	T80		42	Jan-02	1/7/2002
5902277	BR02	1L7Z	7881203	CAA	S28		42	Mar-02	3/18/2002
5302277	BR02	1L7Z	7881203	BAC	S28		42	Mar-02	3/14/2002
5088011	BR02	1L7Z	7881203	BAA	T80		42	Jan-02	1/29/2002
2408873	BR02	1L7Z	7881203	BAA	S40		42	Dec-01	12/21/2001
2408873	BR02	1L7Z	7881203	CAA	S07		38	Nov-01	11/28/2001
5885000	BR02	1L7Z	7881203	CAB	S28		7	Apr-02	4/4/2002
2708441	BR02	1L7Z	7881203	BAA	S25		42	Nov-01	11/12/2001
2708441	BR02	1L7Z	7881203	AAB	S28		42	Apr-02	4/18/2002
8452521	BR02	1L7Z	7881203	BAC	S28		42	Apr-02	4/13/2002
8447720	BR02	1L7Z	7881203	BAA	S28		42	Apr-02	4/10/2002
8818300	BR02	1L7Z	7881203	BAA	S28		42	Oct-01	10/4/2001
8813300	BR02	1L7Z	7881203	BAB	S25		35	Apr-02	4/8/2002
9313500	BR02	1L7Z	7881203	BAC	S28		41	Oct-01	10/18/2001
8813300	BR02	1L7Z	7881203	BAB	S25		35	Apr-02	4/8/2002
2212800	BR02	1L7Z	7881203	BAA	S40		42	Dec-01	12/7/2001
8888500	BR02	1L7Z	7881203	CAA	S28		42	Jan-02	1/11/2002
8818228	BR02	1L7Z	7881203	CAA	S28		42	Apr-02	4/19/2002
2331441	BR02	1L7Z	7881203	BAA	S25		41	Nov-01	11/8/2001
2331441	BR02	1L7Z	7881203	AAA	S25		41	Feb-02	2/13/2002
2331441	BR02	1L7Z	7881203	CAA	S28		35	Mar-02	3/11/2002
7782272	BR02	1L7Z	7881203	BAA	S40		42	Oct-01	10/8/2001
7782272	BR02	1L7Z	7881203	BAB	S40		42	Dec-01	12/20/2001
7784201	BR02	1L7Z	7881203	AAB	S40		42	Mar-02	3/28/2002
2885000	BR02	1L7Z	7881203	AAB	S40		42	Apr-02	4/23/2002

5580222	6R02	1L7Z	7881203	BAB	828	42	Apr-02	4/18/2002
7584781	6R02	1L7Z	7881203	AAA	528	42	Nov-01	11/28/2001
	6R02	1L7Z	7881203	BAA	340	42	Oct-01	10/24/2001
7436244	6R02	1L7Z	7881203	BAA	340	42	Dec-01	12/11/2001
8628270	6R02	1L7Z	7881203	AAC	828	42	Jan-02	1/2/2002
8646600	6R02	1L7Z	7881203	CAA	328	41	Mar-02	3/1/2002

MOA-011 11829

TBL2001 EspedLF TIS W60	TBL2001 EspedLF CLM KEY	TBL2001 EspedLF MILGE	TBL2001 EspedLF DLR CD	TBL2001 EspedLF DLR SUB CD	TBL2001 EspedLF REGION CD
10	6045706	4286	210	*	NA
6	4798986	14742	6822	*	NA
4	3441443	7618	12048	*	NA
6	6177906	10712	6606	*	NA
7	7676519	8000	6689	*	NA
10	6271235	12948	11848	*	NA
6	6242192	8000	11896	*	NA
15	6469766	17148	20301	*	NA
6	6677769	17298	20329	*	NA
6	6766464	10626	20326	*	NA
10	7836386	12098	20328	*	NA
10	6196964	11722	668	*	NA
6	4306403	6635	1696	*	NA
4	6706406	7148	1696	*	NA
15	6374366	11967	2567	*	NA
7	6456656	10741	3624	*	NA
6	6036606	8426	4226	*	NA
4	6152434	8147	4266	*	NA
3	3661646	3167	6461	*	NA
11	6726967	18636	6461	*	NA
17	7712612	17637	6412	*	NA
11	6636762	6237	6412	*	NA
7	6244366	12000	6436	*	NA
15	6616666	28006	6436	*	NA
6	6044011	4106	6440	*	NA

RO04-011 11951