

RQ04-011
FORD
APRIL 26, 2005
REQUEST 8
PART 4 OF 6
BOOKS 31 OF 43

2001 F150 After Inspection_ID	2001 F150 After Inspection_MDL_YR	2001 F150 After Inspection_SORT_INDEX	2001 F150 After Inspection_VIN_CD	2001 F150 After Inspection_VEH_LINE_CD
1	2001	1	3FTZF17281M	T/F5
2	2001	2	3FTZF17281M	T/F5
7	2001	7	3FTZF17231M	T/F5
14	2001	14	2FTZF18281C	T/F5
15	2001	15	2FTZF18251C	T/F5
20	2001	20	2FTZF17281C	T/F5
22	2001	22	2FTZF17211C	T/F5
23	2001	23	2FTZF17201C	T/F5
24	2001	24	2FTZF082X1C	T/F5
25	2001	25	2FTZF07381C	T/F5
26	2001	26	2FTZF07341C	T/F5

31	2001	31	2FTZF07331C		T/F5
32	2001	32	2FTZF07311C		T/F5
35	2001	35	2FTZF07201C		T/F5
36	2001	36	2FTRX18W51C		T/F5
41	2001	41	2FTRX17L81C		T/F5
43	2001	43	2FTRF17W81C		T/F5
50	2001	50	2FTPX17Z21C		T/F5
51	2001	51	2FTPX17Z11C		T/F5
52	2001	52	2FTPF18L71C		T/F5
54	2001	54	2FTPF17Z01C		T/F5
55	2001	55	1FTZX17ZK1N		T/F5

NO34-011 11548

55	2001	65	1FTZX17291N		T/F5
60	2001	60	1FTZX17291N		T/F5
63	2001	63	1FTZX17271N		T/F5
64	2001	64	1FTZX17271N		T/F5
64	2001	64	1FTZX17271N		T/F5
65	2001	65	1FTZX17281N		T/F5
68	2001	68	1FTZX17241N		T/F5
71	2001	71	1FTZX17211N		T/F5
76	2001	76	1FTZF172X1N		T/F5
79	2001	79	1FTZF172X1N		T/F5
83	2001	83	1FTZF17291N		T/F5
84	2001	84	1FTZF17291N		T/F5
85	2001	85	1FTZF17291N		T/F5

ROD-011 11541

87	2001	87	1FTZF17281N		T/F5
89	2001	89	1FTZF17281N		T/F5
90	2001	90	1FTZF17281N		T/F5
95	2001	95	1FTZF17271N		T/F5
96	2001	96	1FTZF17271N		T/F5
98	2001	98	1FTZF17271N		T/F5
100	2001	100	1FTZF17271N		T/F5
103	2001	103	1FTZF17261N		T/F5
104	2001	104	1FTZF17261N		T/F5
106	2001	106	1FTZF17261N		T/F5

107	2001	107	1FTZF17281N		T/F5
108	2001	108	1FTZF17281N		T/F5
111	2001	111	1FTZF17241N		T/F5
112	2001	112	1FTZF17241N		T/F5
114	2001	114	1FTZF17241N		T/F5
117	2001	117	1FTZF17231N		T/F5
118	2001	118	1FTZF17231N		T/F5
119	2001	118	1FTZF17231K		T/F5
123	2001	123	1FTZF17211N		T/F5
131	2001	131	1FTZF17201N		T/F5
132	2001	132	1FTZF17201N		T/F5

134	2001	134	1FTZF07281K		T/F5
135	2001	135	1FTRX18W81N		T/F5
137	2001	137	1FTRX18W91N		T/F6
138	2001	139	1FTRX18W21N		T/F5
140	2001	140	1FTRX18L91N		T/F6
141	2001	141	1FTRX18L71N		T/F6
144	2001	144	1FTRX17WX1K		T/F6
145	2001	145	1FTRX17W81N		T/F6

150	2001	150	1FTRX17W21N	[REDACTED]	T/F5
152	2001	152	1FTRX17L71N	[REDACTED]	T/F5
153	2001	153	1FTRX17L41N	[REDACTED]	T/F5
154	2001	154	1FTRX08W71K	[REDACTED]	T/F5
156	2001	156	1FTRW08W21K	[REDACTED]	T/F5
160	2001	160	1FTRW08L01K	[REDACTED]	T/F5
165	2001	165	1FTRW08L41K	[REDACTED]	T/F5
168	2001	168	1FTRW08L21K	[REDACTED]	T/F5
169	2001	169	1FTRW08L11K	[REDACTED]	T/F5
172	2001	172	1FTRW07W81K	[REDACTED]	T/F5

173	2001	173	1FTRW07LX1K		T/F5
174	2001	174	1FTRW07L51K		T/F5
178	2001	178	1FTRW07L51K		T/F5
182	2001	182	1FTRF18W11N		T/F5
189	2001	189	1FTRF17W71N		T/F5
191	2001	191	1FTRF17W61N		T/F5
194	2001	194	1FTRF17W51N		T/F5
196	2001	196	1FTRF17W41N		T/F5
197	2001	197	1FTRF17W31N		T/F5
198	2001	198	1FTRF17W11N		T/F5
202	2001	202	1FTRF17LX1N		T/F5
205	2001	205	1FTPF18L11N		T/F5
207	2001	207	1FTPF17LX1N		T/F5

2001 F150 After Inspection_MKT_DERIVED	2001 F150 After Inspection_BOD_CAB_STL	2001 F150 After Inspection_VER_SERIES_CD	2001 F150 After Inspection_DRIVE_CD	2001 F150 After Inspection_ENG_CD	2001 F150 After Inspection_TRANS_CD
*	T/BB	T/AM	T/B	T/LY	T/RE
*	T/BB	T/AM	T/B	T/LY	T/DU
*	T/BB	T/AM	T/B	T/LY	T/DU
*	T/BB	T/AM	T/E	T/LY	T/DU
*	T/BB	T/AM	T/E	T/LY	T/RE
*	T/BB	T/AM	T/B	T/LY	T/DU
*	T/BB	T/AM	T/B	T/LY	T/DU
*	T/BB	T/AM	T/B	T/LY	T/DU
*	T/BB	T/AM	T/E	T/LY	T/RE
*	T/BB	T/AM	T/B	T/WP	T/D7
*	T/BB	T/AM	T/B	T/WP	T/D7

*	T/BB	T/AM	T/B	T/WP	T/D7
*	T/BB	T/AM	T/B	T/WP	T/D7
*	T/BB	T/AM	T/B	T/LY	T/DU
*	T/BD	T/AM	T/E	T/MN	T/DU
*	T/BD	T/AM	T/B	T/VZ	T/DU
*	T/BB	T/AM	T/B	T/MN	T/DU
*	T/BD	T/AM	T/B	T/VZ	T/DE
*	T/BD	T/AM	T/B	T/VZ	T/DE
*	T/BB	T/AM	T/E	T/VZ	T/DE
*	T/BB	T/AM	T/B	T/VZ	T/DE
*	T/BD	T/AM	T/B	T/LY	T/DU

*	T/BD	T/AM	T/B	T/LY	T/OU
*	T/BD	T/AM	T/B	T/LY	T/OU
*	T/BD	T/AM	T/B	T/LY	T/OU
*	T/BD	T/AM	T/B	T/LY	T/OU
*	T/BD	T/AM	T/B	T/LY	T/OU
*	T/BD	T/AM	T/B	T/LY	T/OU
*	T/BD	T/AM	T/B	T/LY	T/OU
*	T/BD	T/AM	T/B	T/LY	T/OU
*	T/BB	T/AM	T/B	T/LY	T/RE
*	T/BB	T/AM	T/B	T/LY	T/OU
*	T/BB	T/AM	T/B	T/LY	T/OU
*	T/BB	T/AM	T/B	T/LY	T/OU
*	T/BB	T/AM	T/B	T/LY	T/RE

*	T/BB	T/AM	T/B	T/LY	T/DU
*	T/BB	T/AM	T/B	T/LY	T/DU
*	T/BB	T/AM	T/B	T/LY	T/DU
*	T/BB	T/AM	T/B	T/LY	T/RE
*	T/BB	T/AM	T/B	T/LY	T/DU
*	T/BB	T/AM	T/B	T/LY	T/DU
*	T/BB	T/AM	T/B	T/LY	T/DU
*	T/BB	T/AM	T/B	T/LY	T/DU
*	T/BB	T/AM	T/B	T/LY	T/RE
*	T/BB	T/AM	T/B	T/LY	T/DU
*	T/BB	T/AM	T/B	T/LY	T/RE

•	T/BB	T/AM	T/B	T/LY	T/RE
•	T/BB	T/AM	T/B	T/LY	T/OU
•	T/BB	T/AM	T/B	T/LY	T/RE
•	T/BB	T/AM	T/B	T/LY	T/OU
•	T/BB	T/AM	T/B	T/LY	T/OU
•	T/BB	T/AM	T/B	T/LY	T/OU
•	T/BB	T/AM	T/B	T/LY	T/OU
•	T/BB	T/AM	T/B	T/LY	T/RE
•	T/BB	T/AM	T/B	T/LY	T/OU
•	T/BB	T/AM	T/B	T/LY	T/OU
•	T/BB	T/AM	T/B	T/LY	T/OU

•	T/BB	T/AM	T/B	T/LY	T/OU
•	T/BD	T/AM	T/E	T/VN	T/RE
•	T/BD	T/AM	T/E	T/VN	T/OU
•	T/BD	T/AM	T/E	T/VN	T/OU
•	T/BD	T/AM	T/E	T/VZ	T/OU
•	T/BD	T/AM	T/E	T/VZ	T/OU
•	T/BD	T/AM	T/B	T/VN	T/OU
•	T/BD	T/AM	T/B	T/VN	T/OU

*	T/BC	T/AM	T/B	T/VZ	T/OU
*	T/BC	T/AM	T/B	T/VZ	T/OU
*	T/BC	T/AM	T/B	T/VZ	T/OU
*	T/BB	T/AM	T/E	T/VN	T/OU
*	T/BB	T/AM	T/B	T/VN	T/OU
*	T/BB	T/AM	T/B	T/VN	T/OU
*	T/BB	T/AM	T/B	T/VN	T/OU
*	T/BB	T/AM	T/B	T/VN	T/OU
*	T/BB	T/AM	T/B	T/VN	T/OU
*	T/BB	T/AM	T/B	T/VN	T/OU
*	T/BB	T/AM	T/B	T/VN	T/OU
*	T/BB	T/AM	T/B	T/VZ	T/OU
*	T/BB	T/AM	T/E	T/VZ	T/DE
*	T/BB	T/AM	T/B	T/VZ	T/DE

.	T/BD	T/AM	T/B	T/VN	T/OU
.	T/BD	T/AM	T/B	T/VZ	T/OU
.	T/BD	T/AM	T/B	T/VZ	T/OU
.	T/BD	T/AM	T/E	T/VN	T/OU
.	T/BC	T/AM	T/E	T/VN	T/OU
.	T/BC	T/AM	T/E	T/VZ	T/OU
.	T/BC	T/AM	T/E	T/VZ	T/OU
.	T/BC	T/AM	T/E	T/VZ	T/OU
.	T/BC	T/AM	T/E	T/VZ	T/OU
.	T/BC	T/AM	T/B	T/VN	T/OU

2001 F150 After Inspection_PLANT_CD	2001 F150 After Inspection_FROON_DT	2001 F150 After Inspection_WRTY_START_DT	2001 F150 After Inspection_NAME	2001 F150 After Inspection_DOC_NUM	2001 F150 After Inspection_PH_NUM
A2	5/24/2001	6/23/2001	32 FORD-MERCURY, INC.	112711D	7322124
A2	5/24/2001	9/18/2001	MALOUF FORD, INC.	909585A	9610300
A2	4/21/2001	7/27/2001	REDLANDS FORD	8270452	7633211
A4	3/30/2001	4/20/2001	HARDWICK MOTORS INC	023586A	4725967
A4	1/12/2001	5/9/2001	FORD OF GREENSBURG	26130401	8346820
A4	5/22/2001	7/29/2001	OAKFIELD FORD INC	337828A	6347800
A4	5/2/2001	6/12/2001	WEIKERT FORD INC	9855505	6767944
A4	4/30/2001	5/15/2001	LYONS-RYAN FORD SALES, INC.	2418351	3653900
A4	4/27/2001	7/26/2001	FRANK KIRBY FORD LINCOLN- MERCU	2998901	7662100
A4	4/23/2001	5/19/2001	FREEDOM FORD HAMPTON, INC.	272488A	6360222
A4	5/3/2001	6/13/2001	WILLIAMS MOTOR CO., INC.	8112152	2342770

AA	2/7/2001	3/2/2001	THOMASON FORD OF BEAVERTON	59286202	6441131
AA	3/1/2001	3/23/2001	UNIVERSAL FORD INC	2061751	2739700
AA	1/12/2001	4/12/2001	RAZZARI FORD	16751602	3633673
AA	1/19/2001	3/6/2001	SKINNER SALES INC	1423730	6685530
AA	11/15/2000	5/10/2001	STERLING FORD LINC MERC INC	3328251	6256300
AA	3/23/2001	7/21/2001	MCMULLEN FORD	717861	3680531
AA	4/27/2001	6/12/2001	JM CLICK FORD INC	23285561	7472000
AA	4/30/2001	10/4/2001	LARRY GEWEKE FORD	990301	6212121
AA	11/13/2000	3/22/2001	CLASSIC FORD LINCOLN MERCURY,	7764001	6252011
AA	4/17/2001	6/25/2001	ORVILLE BECKFORD FORD- MERCURY	954251	6232234
AR	3/29/2001	6/15/2001	CLAREMONT FORD	10422102	6251500

AR	4/11/2001	11/25/2001	NORTH COUNTY FORD	244483C	8458800
AR	10/16/2000	2/26/2001	KOONS FORD OF BALTIMORE INC	3849351	2963600
AR	4/11/2001	6/12/2001	COUNTRY FORD-MERCURY	082234B	3558111
AR	11/29/2000	6/21/2001	NORTH CENTRAL FORD	56828402	2313491
AR	11/29/2000	6/21/2001	NORTH CENTRAL FORD	56828402	2313491
AR	10/30/2000	3/5/2001	HINESVILLE FORD CO	4520802	3653505
AR	10/4/2000	3/24/2001	CAUSEWAY FORD & MERCURY	12246302	5878083
AR	11/10/2000	11/29/2000	GILLESPIE FORD	7680552	5091000
AR	4/10/2001	6/14/2001	LAWRENCE MARSHALL FORD MERCURY	61426502	8268026
AR	11/2/2000	2/16/2001	SENTRY FORD, INC.	136318B	3955400
AR	5/9/2001	6/30/2001	KENNY ROSS FORD SOUTH, INC.	0548575	5810001
AR	5/3/2001	7/12/2001	MIKE SHAD FORD AT THE AVENUES	3708151	2923325
AR	4/24/2001	6/21/2001	NATCHEZ FORD LINCOLN MERCURY	098522A	4450078

AR	1/10/2001	10/12/2001	FUTURE FORD	4387288	7863673
AR	11/8/2000	3/2/2001	HARRY HUMPHRIES AUTO CITY INC	110788A	3458881
AR	4/11/2001	7/8/2001	QUEEN CITY LINCOLN- MERCURY	8673302	5538300
AR	2/8/2001	8/4/2001	GARNET FORD INC	8688351	3588600
AR	2/7/2001	7/30/2001	BILL UTTER FORD, INC.	8808651	3217400
AR	1/17/2001	1/28/2001	TIM MOONEY, INC.	3480001	2533853
AR	1/3/2001	6/22/2001	OURISMAN FORD COMPANY, INC.	28171001	4688800
AR	10/31/2000	3/16/2001	PRESTIGE FORD	20774001	8843673
AR	2/16/2001	7/8/2001	GEM CITY FORD LINCOLN MERCURY,	1134388	2228700
AR	12/20/2000	1/4/2001	KIRK AUTO COMPANY	8381381	2283832
AR	6/21/2001	8/30/2001	CARL GREGORY FORD L-M OF AUBUR	3748001	8878571

AR	3/8/2001	4/7/2001	KINSEL FORD, INC.	111160D	8866011
AR	12/21/2000	5/22/2001	MIDWAY FORD	280458A	2883000
AR	4/5/2001	6/12/2001	RUSSELL & SMITH FORD INC	442251	6634111
AR	3/14/2001	5/11/2001	CORNING FORD-MERCURY	156558A	5245434
AR	2/14/2001	2/23/2001	LONG MOTOR COMPANY, INC.	8511	8432521
AR	11/1/2000	4/15/2001	LUCAS MOTOR COMPANY, INC.	11879401	3883100
AR	10/18/2000	5/4/2001	GLADES FORD-LINCOLN- MERCURY	2403701	6824000
AJ	1/29/2001	5/21/2001	BAYTOWN FORD	14581405	8383300
AR	4/5/2001	7/27/2001	LUCAS MOTOR COMPANY, INC.	12780003	3883100
AR	2/7/2001	11/3/2001	HERITAGE FORD	6294752	5295110
AR	10/17/2000	7/9/2001	HENRY CURTIS FORD- MERCURY	9403151	7882900

AJ	5/22/2001	9/24/2001	FORD COUNTRY	8445251	5683673
AR	4/20/2001	6/26/2001	PHIL LONG FORD, LLC	54404601	8335881
AR	3/8/2001	4/3/2001	SAM GALLOWAY FORD, INC.	55694702	9363673
AR	3/20/2001	4/13/2001	SAM GALLOWAY FORD, INC.	52448701	9363673
AR	3/21/2001	5/4/2001	RITCHART FORD	7767201	6805555
AR	4/17/2001	5/17/2001	TROPICAL FORD INC	295006A	8513800
AJ	12/20/2000	4/14/2001	GALPIN FORD	5960331	7873800
AR	3/6/2001	6/9/2001	GRAY-DANIELS FORD	180683A	8252801

AR	3/8/2001	3/28/2001	WALNUT CREEK FORD	331780A	6322900
AR	11/14/2000	12/28/2000	FRONTIER FORD LINCOLN MERCURY,	594801	4832118
AR	12/20/2000	2/28/2001	EDDIE PREUTT FORD INC	057859A	7732578
AJ	11/22/2000	6/8/2001	MIKE KEHOE FORD, INC.	6551551	6344444
AJ	2/9/2001	7/18/2001	SUBURBAN FORD INC	2829245	8472500
AJ	4/5/2001	8/22/2001	WESTLIE MOTOR COMPANY	481217A	5821354
AJ	2/6/2001	4/12/2001	COMMUNITY FORD LINCOLN- MERCURY	6181481	6371972
AJ	4/20/2001	7/24/2001	DUTHLER FORD SALES, INC.	5220004	9585511
AJ	2/8/2001	3/23/2001	NOVATO FORD	1284745	8824288
AJ	1/29/2001	2/13/2001	WORLD FORD/KENDALL	8718252	2388211

AJ	5/21/2001	2/5/2002	BELL FORD	4976301	8661776
AJ	10/25/2000	12/19/2000	HERITAGE FORD	8382282	5296110
AJ	11/28/2000	2/10/2001	RON DUPRATT FORD	029098A	6785555
AR	3/15/2001	5/28/2001	JIM CLICK FORD INC	32107703	7472000
AR	11/13/2000	3/13/2001	RIVERSIDE FORD INC	1728051	7425771
AR	5/22/2001	8/7/2001	HAYWARD FORD	36553301	8511200
AR	11/15/2000	12/4/2000	RANDALL FORD INC	4832951	4521911
AR	10/6/2000	5/24/2001	COUNTRYSIDE FORD	20231	5458678
AR	3/18/2001	6/30/2001	MOREHEAD CITY FORD	7787201	2472132
AR	5/21/2001	5/27/2001	CHAPMAN FORD SALES	19157602	9980251
AR	4/19/2001	8/30/2001	JIM KEIM FORD, INC.	1774798	8863353
AR	4/11/2001	4/24/2001	FAMILY FORD INC	7321982	3473000
AR	12/7/2000	8/15/2001	COLEMAN FORD LINC-MERC INC	066417A	-

.
.
.
.
.
.
.
.
.
.
.

.
.
.
.
.
.
.
.
.
.
.
.
.
.
.

.
.
.
.
.
.
.
.
.
.
.

FORM-011 11567

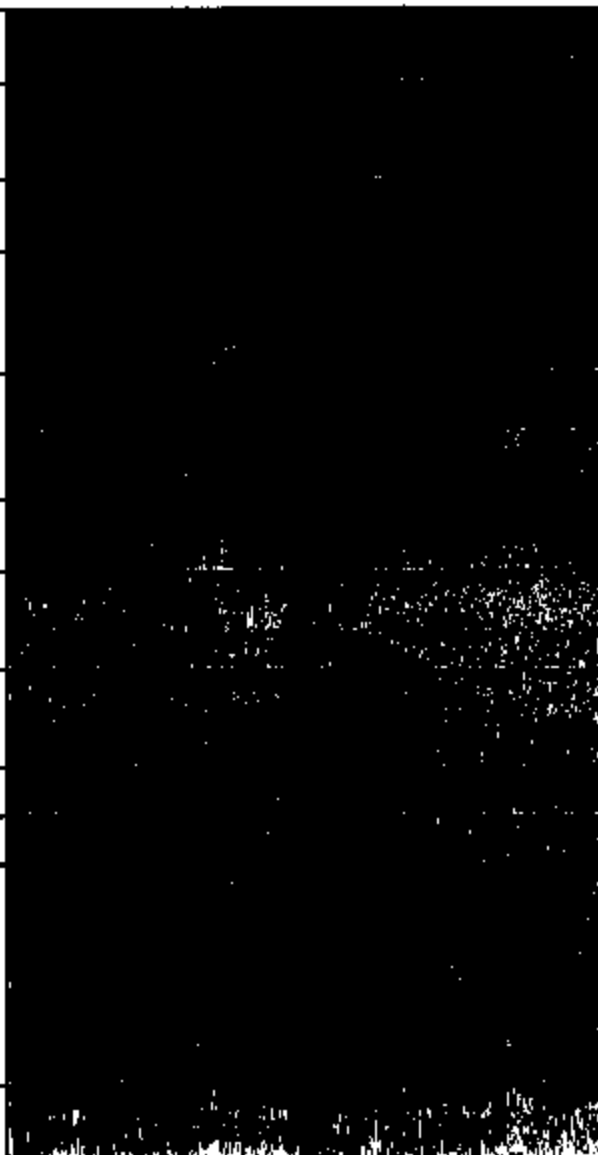
.
.
.
.
.
.
.
.

NOV-011 11588

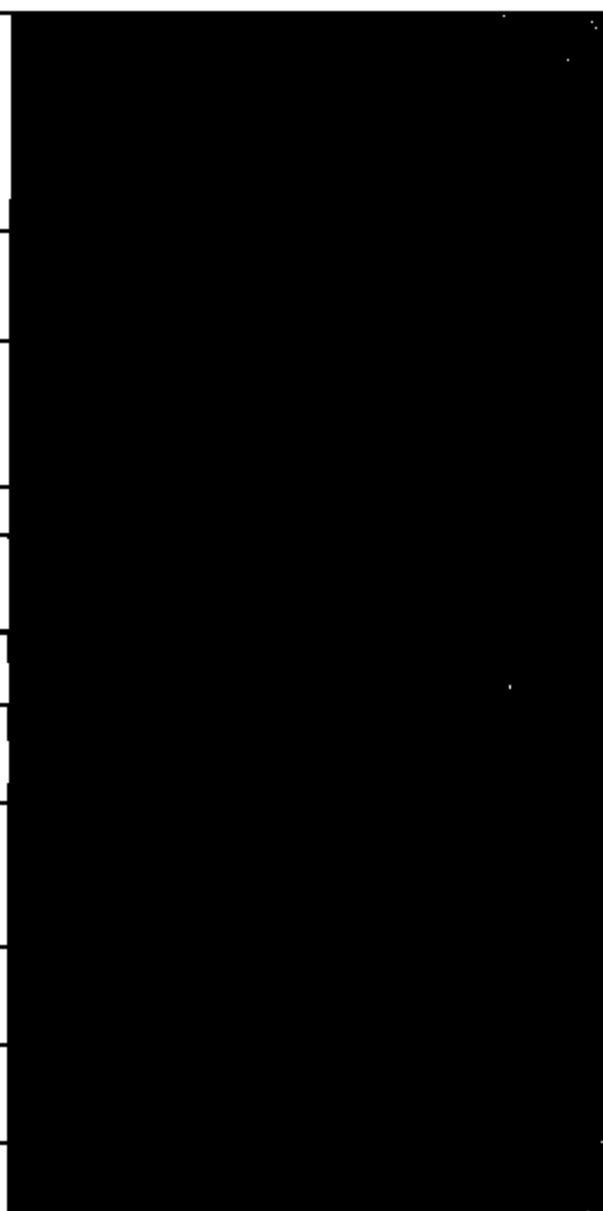
.
.
.
.
.
.
.
.
.
.

.
.
.
.
.
.
.
.
.
.
.
.
.
.
.

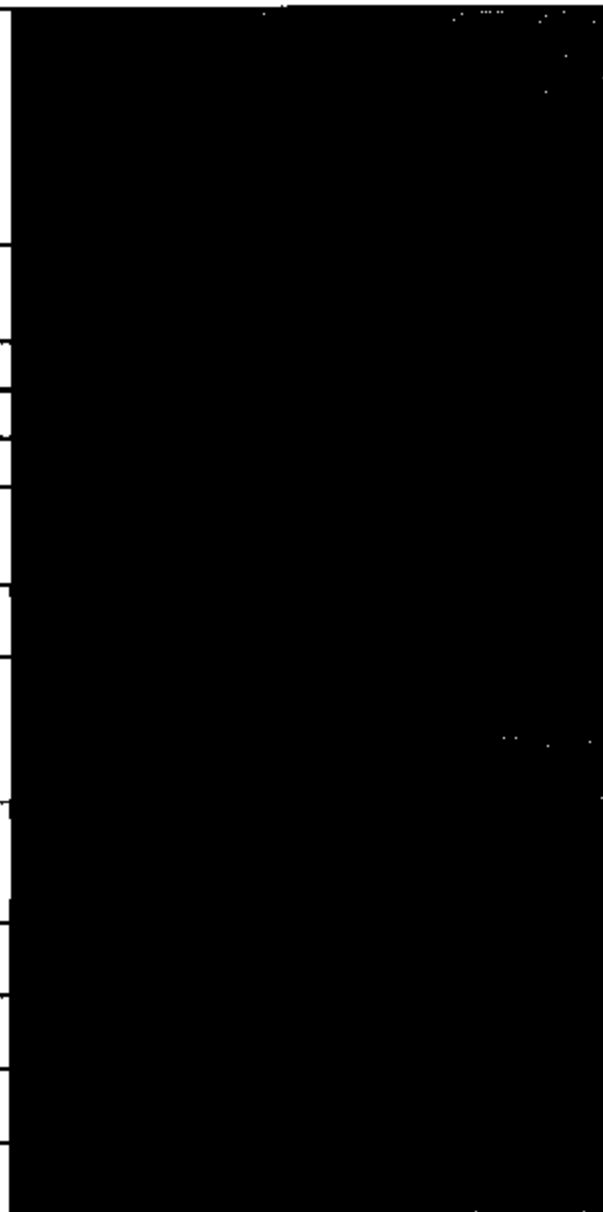
2001 F150 After Inspection_RPR_DT	2001 F150 After Inspection_TIS_WSD	2001 F150 After Inspection_CLM_KEY	2001 F150 After Inspection_MLGE
12/28/2001	7	5878223	4963
4/24/2002	8	8238872	4486
5/1/2002	10	8372798	7188
7/31/2001	4	2873103	4091
9/29/2001	5	4004934	5082
8/5/2001	2	3451658	2008
11/27/2001	8	5389089	11315
3/21/2002	11	7887610	5300
10/22/2001	3	4752854	7149
1/11/2002	8	8221102	16618
9/25/2001	4	3889084	2467



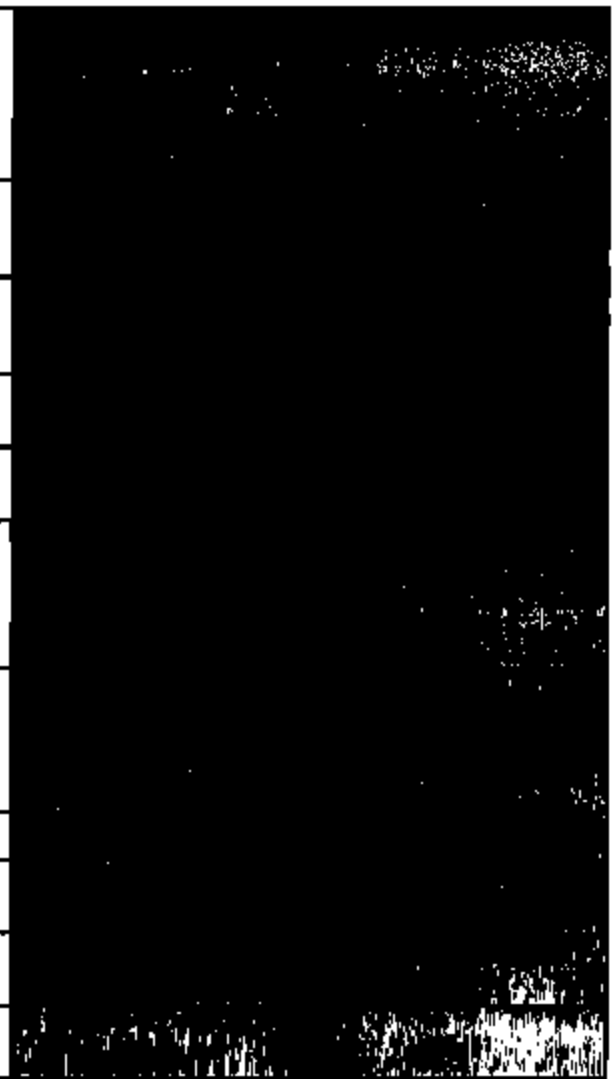
10/8/2001	8	4323876	8073
7/27/2001	0	2889889	152
5/13/2002	14	8725277	8385
10/22/2001	8	4808798	11711
12/28/2001	8	8949121	14347
11/12/2001	4	5044627	2878
7/17/2001	2	3233135	730
7/24/2001	0	2834715	73
8/24/2001	7	4877297	8048
12/12/2001	7	6741890	5760
8/11/2001	1	3775804	3334



12/4/2001	1	5514752	1478
3/9/2002	13	7392871	12290
5/7/2002	11	8533445	18368
1/3/2002	7	8118915	7205
1/3/2002	7	8119915	7205
1/25/2002	11	5790110	27324
2/6/2002	11	6968988	10711
8/4/2001	8	2844227	12058
1/28/2002	8	8511306	10001
3/28/2002	14	7810800	13294
1/4/2002	5	8144820	4557
10/3/2001	3	4247874	2958
8/27/2001	4	3221511	8081



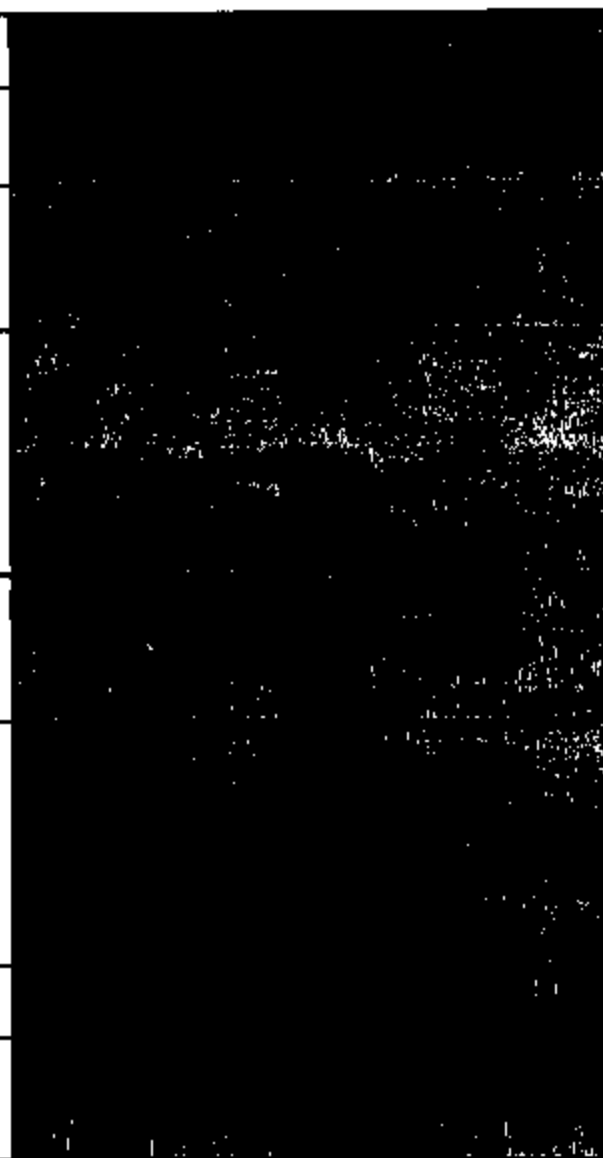
10/12/2001	0	4480449	80
2/5/2002	12	6884487	10583
10/15/2001	4	4507175	16408
10/23/2001	3	4748801	3789
7/31/2001	1	2744358	10
5/22/2002	17	8816636	19479
4/23/2002	11	6360882	32327
10/9/2001	7	4374058	10040
9/1/2001	2	3894588	5410
4/3/2002	15	5107748	28123
5/6/2002	11	5480889	11218



ROD-913 11574

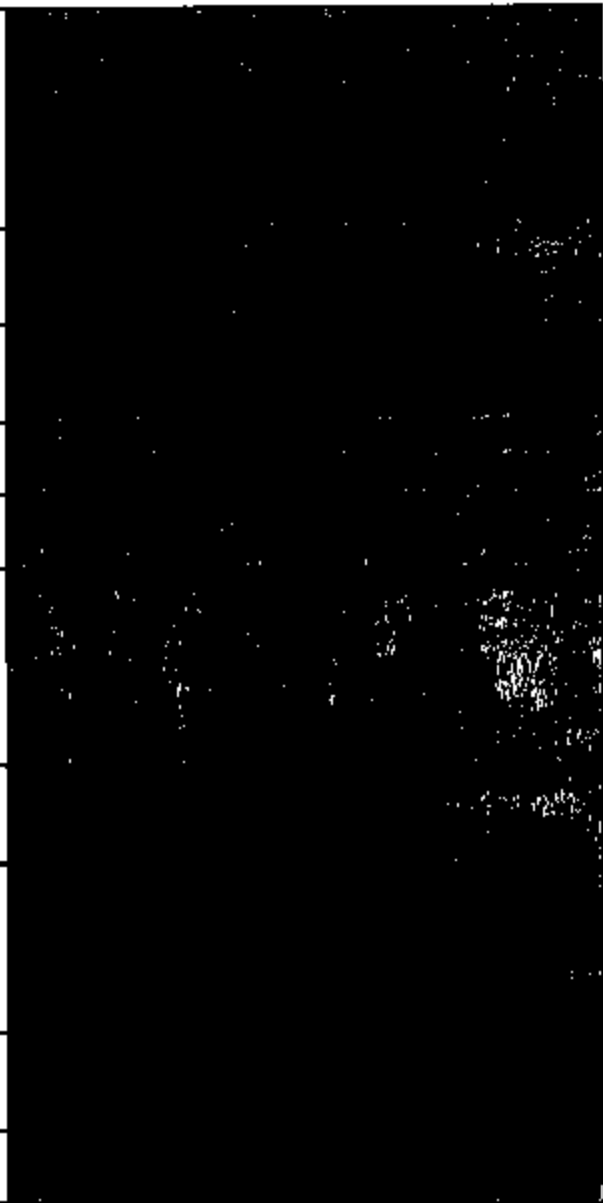
9/28/2001	8	3987195	13423
4/13/2002	10	7980618	12392
4/23/2002	12	8262482	19071
12/18/2001	4	5846172	2529
11/13/2001	9	5097619	14811
8/13/2001	4	3243803	4000
10/2/2001	6	4079738	9298
12/12/2001	7	6715364	20584
5/2/2002	10	8449757	5064
4/13/2002	8	8104673	16580
10/5/2001	3	4252286	4212

7/27/2001	0	2815413	20
9/15/2001	4	3711494	5012
2/16/2002	11	7111042	23964
8/31/2001	5	3430488	10987
2/1/2002	8	7148509	12125
1/14/2002	9	6230122	25723
5/10/2001	4	3491685	3024
1/14/2002	8	6347304	6411

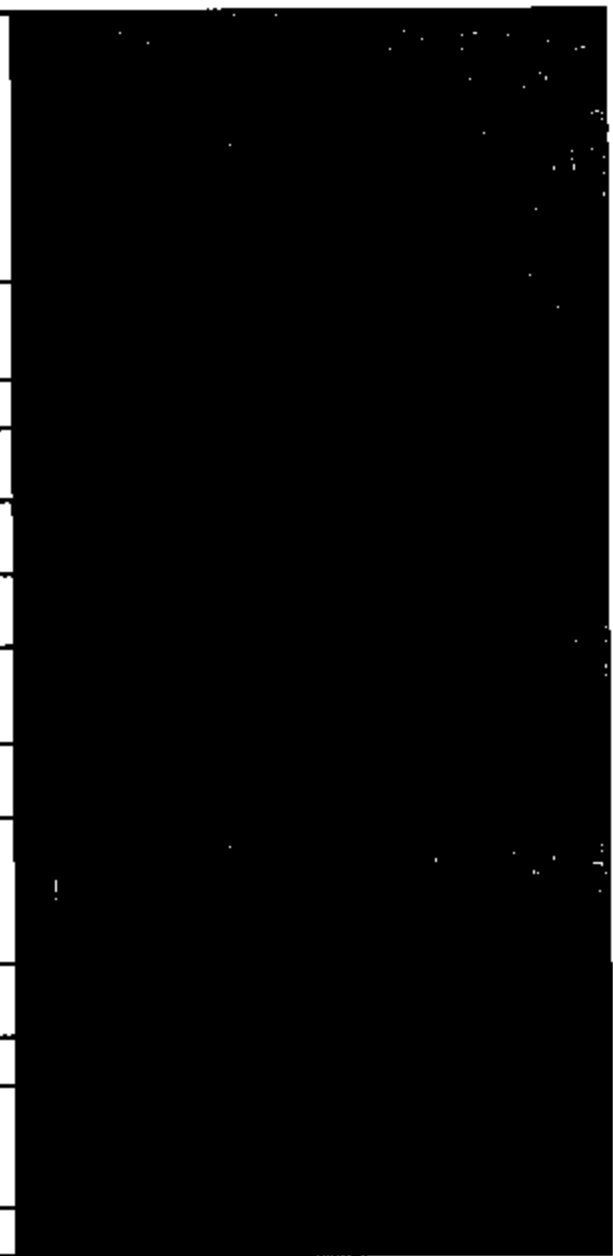


NOB-011 11578

8/10/2001	6	3688785	4057
8/20/2001	9	3966734	25403
11/19/2001	8	8163990	6400
8/10/2001	3	3406582	1888
8/30/2001	2	3381477	4794
10/6/2001	2	4244287	932
5/14/2002	14	8567980	29758
7/19/2001	0	2542799	11
8/27/2001	6	9332690	3175
11/26/2001	10	5369817	21381



7/28/2001	0	2804479	2
8/11/2001	8	2941766	12314
10/19/2001	9	6236395	20240
12/28/2001	8	8838161	35815
1/15/2002	11	6279451	24253
10/29/2001	8	4748444	12714
4/11/2002	17	7963575	38411
10/30/2001	3	6387212	3767
2/5/2002	8	6760328	8480
5/23/2002	13	5791886	12464
4/10/2002	10	7942771	10128
10/17/2001	6	4586846	2832
3/14/2002	8	7405805	10123



2001 F150 After Inspection_DLR_CD	2001 F150 After Inspection_DLR_SUB_CD	2001 F150 After Inspection_REGION_CD	2001 F150 After Inspection_ST_PROV_CD	2001 F150 After Inspection_CP&C_CD_5
1822	*	NA	OH	*
20527	*	NA	NJ	*
1895	*	NA	CA	*
9004	*	NA	VT	*
7479	*	NA	PA	*
1508	*	NA	IL	*
4798	*	NA	FL	*
1505	*	NA	IL	*
8679	*	NA	MI	*
1586	*	NA	VA	*
2173	*	NA	OH	*

5728	*	NA	OR	*
8660	*	NA	VA	*
7920	*	NA	CA	*
583	*	NA	NY	*
1833	*	NA	IL	*
7282	*	NA	IA	*
20402	*	NA	AZ	*
7704	*	NA	CA	*
3051	*	NA	MI	*
548	*	NA	FL	*
1781	*	NA	CA	*

888	*	NA	GA	*
144	*	NA	MD	*
1223	*	NA	NJ	*
4212	*	NA	TX	*
4212	*	NA	TX	*
4855	*	NA	GA	*
20672	*	NA	NJ	*
4545	*	NA	TX	*
3282	*	NA	TX	*
8811	*	NA	MA	*
3018	*	NA	PA	*
4982	*	NA	FL	*
5982	*	NA	MS	*

NOVA-811 11561

	7749	*	NA	CA	*
	2381	*	NA	OH	*
	10257	*	NA	NC	*
	1373	*	NA	PA	*
	2463	*	NA	TX	*
	4702	*	NA	IL	*
	129	*	NA	MD	*
	2415	*	NA	TX	*
0.5	8063	*	NA	IL	*
0.3	6085	*	NA	MS	*
0.2	2684	*	NA	AL	*

	4418	*	NA	TX	*
	4893	*	NA	FL	*
	4572	*	NA	TX	*
	7775	*	NA	CA	*
	2485	*	NA	TX	*
	1221	*	NA	NJ	*
	4979	*	NA	FL	*
0.5	694	*	NA	TX	*
0.3	1221	*	NA	NJ	*
0.4	7941	*	NA	CA	*
0.3	7713	*	NA	CA	*

1440	*	NA	NV	*
3140	*	NA	CO	*
4845	*	NA	FL	*
4845	*	NA	FL	*
9229	*	NA	MN	*
4824	*	NA	FL	*
5836	*	NA	CA	*
7356	*	NA	MS	*

NOV-011 11594

7820	*	NA	CA	*
7113	*	NA	NE	*
5880	*	NA	AL	*
6038	*	NA	MO	*
1761	*	NA	PA	*
4129	*	NA	ND	*
8332	*	NA	UT	*
6670	*	NA	MI	*
7715	*	NA	GA	*
4820	*	NA	FL	*

20380	*	NA	AZ	*
7841	*	NA	CA	*
7865	*	NA	CA	*
20402	*	NA	AZ	*
348	*	NA	GA	*
7729	*	NA	CA	*
5875	*	NA	AR	*
3578	*	NA	NC	*
1191	*	NA	NC	*
1402	*	NA	DE	*
1470	*	NA	OH	*
20523	*	NA	NJ	*
1388	*	NA	IL	*

NOVA-011 11205

2001 F150 After Inspection_TECH_TXT1	2001 F150 After Inspection_TECH_TXT2	2001 F150 After Inspection_CUST_TXT	2001 F150 After Inspection_AREA_CD	2001 F150 After Inspection_COUNTRY_CD	2001 F150 After Inspection_SLS_DLR_CD
4963 BOP SEAT BELT PASS. SIDE.		01S21 SEAT BELT BUCKLE RETENTION	513	USA	147008
4496 REPLACE PASSENGERSIDE SEAT BELT AS PER RECALL		CUST STATES PERFORM 01S21 RECALL SEATBELT BUCKLE SPO PART	732	USA	113085
PERFORMED RECALL 01S21 TESTED THE BUCKLES PASSED		01S21 SEAT BELT BUCKLE	909	USA	171155
INSPECTED SEAT BELT BUCKLES PER RECALL 01S21. NO REPLACEMENT REQUIRED.		DO 01S21 RECALL	802	USA	111531
CHECK FOR RECALL, NOT NECESSARY		01S21 RECALL	724	USA	144004
2008 REMOVE AND REPLACED SEAT BELT BUCKLE		01S21 SEAT BELT BUCKLE RETENSION DRIVER & PASSENGER FRONT BELTS ONLY	630	USA	141085
OPEN RECALL PERFORM RECALL			863	USA	124478
01S21 INSPECT ONLY NO BUCKLE REPLACEMENT		01S21	847	USA	141408
REPLACED RIGHT SIDE SEAT BELT BUCKLE. 1		RECALL 01S21 BOP	231	USA	148827
REPLACED SEAT BELT		CERTAIN 2001 MODEL YEAR CROWN VICTORIA, EXCURSION, EXPEDITION, F 150, F 250, THROUGH F 550, GRAND MARQUIS, NAVIGATOR, RANGER, TOWN CAR, AND WINDSTAR VEHICLES SEAT BELT RETENTION	757	USA	121016
01S21 INSPECT SEAT BELT BUCKLES, ALL CHECK OKAY	01S21	RECALL...01S21...SEAT BELT BUCKLE	216	USA	144008

BASIC 15812815 CODE 42 TECH 6435 MILES 8078 RAN BUCKLE TEST ON SEAT BELTS, BOTH OUTER BELTS TESTED OK BU T FOUND CENTER BELT NOT WORKING PROPERLY. ORDERED CENTER SEA		PERFORM 01S21 RECALL SEAT BELT SPECIAL ORDER PART CENTER BELT	503	USA	174017
RECAL 01S21 PERFORM RECALL		CUSTOMER STATES RECALL01S21	604	USA	127072
			209	USA	172443
INSPECT FT BELTS OK		REPLACED BOTH BUCKLES 60 40 SEAT	315	USA	118215
01S21 01S21 INSPECT OK		RECALL 01S21 SEAT BELT BUCKLE	615	USA	141636
CAMPAIGN 01S21A COMPLETED, PARTS HAVE BEEN ORDERED FOR YOU		PERFORM RECALL 01S21	712	USA	153507
RECALL 01S21P REPLACE LEFT & RIGHT SIDE SEATBELT BUCKLES PER RECALL UNIT #3762		01S21 RECALL	602	USA	171206
PERFORM RECALL 01S21 REPLACED BOTH SEAT BELT BUCKLES			530	USA	172207
1 INSPECTED SEAT BELT BUCKLES ALL FINE PER RECALL		COMPLETE RECALL OR PROGRAM PER OWNER NOTIFICATION LETTER. SEAT BELT RECALL	616	USA	148578
01S21 RECALL PERFORMED RECALL 01S21 BOTH SEAT BELTS		RECALL 01S21 SEAT BELT BUCKLE	650	USA	124081
SPECIAL ORDER SEAT BELT			908	USA	171007

1493 RECALL 0.2 PERFORMED SEAT BELT RECALL AS PER RECALL QUALITY TESTED OK		PERFORM(ED) SEAT BELT BUCKLE CAMPAIGN #01S21 AS PER CAMPAIGN INSTRUCTIONS.	780	USA	171078
RECALL INSPECT SEAT BELT BUCKLE PER RECALL, OK AT THIS TIME		RECALL 01S21	410	USA	127037
PERFORM RECALL		OK SEAT BELT RECALL REPORT	868	USA	116433
1 PERFORM INSPECTION, NO SERVICE REQUIRED		RECALL 01S21 SEATBELT BUCKLE	972	USA	152017
1 PERFORM INSPECTION, NO SERVICE REQUIRED		RECALL 01S21 SEATBELT BUCKLE	972	USA	152017
BOTH BELTS ORDERED FOR RECALL, FAILED TEST. REPLACED BOTH END RELEASES.		RECALL LETTER 01S21 SEAT BELT RELEASE.	912	USA	124555
RECALL, TEST PER RECALL OK		INSPECT FRONT SEAT BELTS MAY NOT FULLY LATCH	809	USA	113581
RECALL 01S21 PERFORMED RECALL 01S21		RECALL 01S21 SEAT BELT INSP.	210	USA	152057
RECALL PERFORM RECALL 01S21 INSPECT SEATBELTS,OK.		RECALL 01S21 SEATBELT BUCKLE	979	USA	152168
13294 OK BELTS PER RECALL OK		TEST SEAT BELTS, REPLACE IF NECESSARY	751	USA	111025
PERFORM RECALL 01S21		RECALL 01S21 SEAT BELT BUCKLE	412	USA	144005
01S21 01S21		RECALL 01S21	904	USA	124223
9061 RECALL INSTALLED BOTH FRONT SEAT BELT BUCKLES		SEATBELT COMES UN BUCKLED PARTS IN	601	USA	123308

REPLACED DRIVERS SIDE BUCKLE PER RECALL		SEAT BELT RETENTION, RENTAL OK	918	USA	172206
RECALL 01821		DRIVERS SEAT BELT BUCKLE COMES UNBUCKLED AT TIMES	218	USA	121823
PERFORMED RECALL		RECALL 01821	704	USA	121208
01821 INSPECT AND REPLACE	01821	CHECK AND PERFORM RECALL SEAT BELT	810	USA	118027
RECALL COMPLETED		PERFORM RECALL 01821, SEAT BELT LATCH RECALL	640	USA	152405
SEAT BELT BUCKLES COULD COME LOOSE. INSPECTED SEAT BELT BUCKLES NO REPLACEMENT WAS NEEDED.		CUSTOMER WISHES TO HAVE RECALL 01821 PERFORMED.	217	USA	127042
INSPECT ONLY SEATBELTS PASS COMPLETED		PERFORM SAFETY RECALL 01821: CERTAIN 2001 MODEL YEAR CROWN VICTORIA, EXCURSION, EXPEDITION, F 150, F 250 THROUGH F 350.	301	USA	127042
1 PERFORMED RECALL		DO RECALL PART 01821 SEAT BELT BUCKLE	972	USA	152012
REPLACE SEAT BELT BUCKLES THAT FAILED TEST		INSPECT & REPLACE 1 SEATBELT BUCKLE	217	USA	153188
01821 RECALL PERFORMED 01821 RECALL		01821 SEAT BELT BUCKLE RECALL	882	USA	123485
INSPECTED SEAT BELTS PER RECALL. NO REPLACEMENT NEEDED		RECALL 01821	334	USA	121538

INSPECT SEATBELT BUCKLES PASSED NO REPLACEMENT NECESSARY		CERTAIN 2001 CR VIC, EXCURSION, EXPEDITION, F150, F250 THRU F550 GR MARQ, NAVIGATOR, RANGER, TOWNCAR, WINDSTAR SEATBELT BUCKLE RETENTION INSPECT AND OR REPLACEMENT	409	USA	152186
PERFORMED RECALL 01821, INSPECTION ONLY		OPEN RECALL 01821, SEAT BELT BUCKLE...	305	USA	124013
RECALL 01821 REPLACED FAILED PASSENGER SEAT BUCKLE		RECALL 01821 SEAT BELT BUCKLE RETENTION	713	USA	152182
PERFORMED RECALL 01821 REPLACED PASS SEATBELT BUCKLE		RECALL 01821	590	USA	172523
INSPECT SEAT BELT ASSEMBLY PER RECALL		RECALL 01821 SEAT BELT BUCKLE	903	USA	152448
SEE RECALL NOTE FOR NO ACTION JUST INSPECT USE 01821A .3 ADMIN .1 PERFORMED RECALL 01821 SEAT BELT BUCKLE RETENTION		SAFETY RECALL 01821 SEAT BELT BUCKLE RETENTION	809	USA	116043
1 INSPECT AND PERFORM RECALL AS STATED AND OUTLINED IN RECALL BULLETIN		RECALL 01821	561	USA	124443
INSPECTED ALL OK		RECALL 01821 SEAT BELT BUCKLE	281	USA	152042
SEE RECALL NOTE FOR NO ACTION JUST INSPECT USE 01821A .3 ADMIN .1 PERFORMED RECALL 01821 SEAT BELT BUCKLE RETENTION		SAFETY RECALL 01821 SEAT BELT BUCKLE RETENTION	609	USA	116043
RECALL 01821 BUCKLES PASSED INSPECTION		DIAG FOR 01821	209	USA	172300
01821 SEAT BELT RECALL	01821	RECALL 01821 SEAT BELT INSPECTION	707	USA	172448

PER RECALL 01821 INSPECTION		01 8 21 SEAT BELT INSPECT FOR RECALL	702	USA	171188
PERFORMED RECALL 01821 INSPECTED LEFT OK REPLACED RIGHT SEAT BELT BUCKLE		01821 RECALL	719	USA	168200
01821 SEAT BELT BUCKLE TEST AS PER FSA ... BUCKLE S PASS AT THIS TIME		01821 SEAT BELT BUCKLE	841	USA	116232
PERFORMED RECALL 01821. MILEAGE 10,987 LABOR OPERATION NO. 01821A (0.8HR8) INSPECT SEAT BELT BUCKLE, NO REPLACEMENT NEEDED.		DO SEAT BELT RECALL 01821	841	USA	116232
1 PERFORMED RECALL PER WARRANTY INSTRUCTIONS CHECK OUT RF SEAT BELT RETRACTOR, REMOVE RF SEAT ASSY.		PERFORM RECALL PER WARRANTY INSTRUCTIONS 01821 SEAT BELT	783	USA	158016
25724 TESTED AND INSPECTED SEATBELT BUCKLES, BUCKLES PASS INSPECTION.		CNN A89 PERFORM RECALL 01821 PER FORD OASIS	407	USA	124227
CC121 PERFORMED 01821 SEATBELT RECALL		PERFORM 01821 RECALL SEATBELT A89	818	USA	171040
8411 INSPECT SEAT BELT BUCKLES REMOVAL OF PASS SEAT AND R/R PASS PRETENSOR PER 01821		A89 RECALL 01821 SEAT BELT BUCKLE RECALL	601	USA	123309

4067 INSPECTED SEAT BELT BUCKLES AS PER RECALL ALL OK		01S21 CERTAIN 2001 MODEL YEAR CROWN VICTORIA, EXCURSION F150, F250 THROUGH F350, GRAND MARQUIS, NAVIGATOR, RANGE R, TOWN CAR AND WINDSTAR SEAT BELT BUCKLE RETENTION	825	USA	172701
INSPECTED SEATBELTS PER RECALL AND REPLACED PASSENGER SIDE BUCKLE		RECALL 01S21	402	USA	163489
SEATBELT RECALL 01S21 COMPLETE BOTH BUCKLES CHECKED OK		RECALL 01S21	259	USA	121716
01S21 01S21		PERFORM RECALL 01S21 NEEDS PASSENGER SIDE	573	USA	163366
RECALL PERFORM RECALL PURSUANT TO 01S21A		RECALL	610	USA	116588
832 TESTED THE SEATBELTS. FOUND THAT THE DRIVER SIDE FRONT BELT NEEDED REPLACING. ORDERED THE SEATBELT. REMOVED THE OLD SEAT BELT AND INSTALLED THE NEW ONE.		RECALL 01S21	701	USA	166621
INSPECTED SEAT BELT OPERATION, TESTED GOOD		RECALL 01S21	435	USA	156558
VERIFIED REPAIR PERFORMED SEAT BELT PROGRAM 01S21. BELTS PASS. OPER. A. 3		01S21 PROGRAM SEATBELT	616	USA	148072
SEAT BELT 01S21		RECALL 01S21 SEAT BELT	415	USA	172035
RECALL DONE		01S21 SEAT BELT BUCKLE INSPECTION RECALL	305	USA	124011

1 T.3 01S21A		RECALL 01S21 SEAT BELT BUCKLE	602	USA	171477
SEAT BELT RECALL 01S21 01S21		RECALL 01S21 SEATBELT BUCKLES	208	USA	172900
			707	USA	172461
1 INSPECT, DRIVERS SIDE GOOD, ORDER PASS SIDE		FACTORY WARRANTY RECALL 01S21 SEAT BELT BUCKLE	602	USA	171205
RECALL		RECALL 01S21 SEAT BELT	476	USA	121210
01S21 COMPLETED CHECK CENTER BELT ORDER		01S21 FIELD SERVICE ACTION	510	USA	116068
RPLC LEFT SEAT BELT BUCKLE PER 01S21		REGALL 01S21	476	USA	141085
PERFORMED RECALL 01S21 AS PER INSTRUCTIONS		RECALL 01S21	336	USA	121648
ABOVE RECALL COMPLETED		CHECK AND PERFORM RECALL# 01S21	252	USA	121647
INSPECT ONLY 01S21A 0.3 1		REPLACE ALL DEFECTIVE BUCKLES INVOLVED IN THIS RECALL	302	USA	116213
PERFORMED RECALL PER FORD		INSPECT SEAT BELT BUCKLES	614	USA	147038
INSPECTED SEAT BELTS AS PER RECALL CENTER BUCKLE FAILED SEE REPAIR LINES 51		CUST STATES PERFORM RECALL 01S21 SOP PARTS ARE HERE CROSS REF 72617	973	USA	113452
REPAIR AS PER RECALL		PERFORM RECALL 01S21	*	USA	141642

2001 F150 After Inspection_TXN_CD	2001 F150 After Inspection_CNTRY_SOLD	2001 F150 After Inspection_QRT_CD	2001 F150 After Inspection_VFG_CD	2001 F150 After Inspection_AWS_VL_CD	2001 F150 After Inspection_VRT_CD
01S21	USA		V00	F5	SXX
01S21	USA		V00	F5	SXX
01S21	USA		V00	F5	SXX
01S21	USA		V00	F5	SXX
01S21	USA		V00	F5	SXX
01S21	USA		V00	F5	SXX
01S21	USA		V00	F5	SXX
01S21	USA		V00	F5	SXX
01S21	USA		V00	F5	SXX
01S21	USA		V00	F5	SXX
01S21	USA		V00	F5	SXX
01S21	USA		V00	F5	SXX

01821	USA		V00	F5	SOX
01821	USA		V00	F5	SOX
01821	USA		V00	F5	SOX
01821	USA		V00	F5	SOX
01821	USA		V00	F5	SOX
01821	USA		V00	F5	SOX
01821	USA		V00	F5	SOX
01821	USA		V00	F5	SOX
01821	USA		V00	F5	SOX
01821	USA		V00	F5	SOX
01821	USA		V00	F5	SOX
01821	USA		V00	F5	SOX
01821	USA		V00	F5	SOX
01821	USA		V00	F5	SOX
01821	USA		V00	F5	SOX

01821	USA		V00	F5	SXX
01821	USA		V00	F5	SXX
01821	USA		V00	F5	SXX
01821	USA		V00	F8	SXX
01821	USA		V00	F8	SXX
01821	USA		V00	F5	SXX
01821	USA		V00	F5	SXX
01821	USA		V00	F5	SXX
01821	USA		V00	F5	SXX
01821	USA		V00	F5	SXX
01821	USA		V00	F5	SXX
01821	USA		V00	F5	SXX
01821	USA		V00	F5	SXX
01821	USA		V00	F5	SXX
01821	USA		V00	F5	SXX

FORM 911 11997

01821	USA		V00	F6	80X
01821	USA		V00	F6	80X
01821	USA		V00	F6	80X
01821	USA		V00	F6	80X
01821	USA		V00	F6	80X
01821	USA		V00	F6	80X
01821	USA		V00	F6	80X
01821	USA		V00	F6	80X
01821	USA		V00	F6	80X
01821	USA		V00	F6	80X
01821	USA		V00	F6	80X
01821	USA		V00	F6	80X

01S21	USA		V00	F5	SXX
01S21	USA		V00	F5	SXX
01S21	USA		V00	F5	SXX
01S21	USA		V00	F5	SXX
01S21	USA		V00	F5	SXX
01S21	USA		V00	F5	SXX
01S21	USA		V00	F5	SXX
01S21	USA		V00	F5	SXX
01S21	USA		V00	F5	SXX
01S21	USA		V00	F5	SXX
01S21	USA		V00	F5	SXX
01S21	USA		V00	F5	SXX

01S21	USA		V00	F5	SXX
01S21	USA		V00	F5	SXX
01S21	USA		V00	F5	SXX
01S21	USA		V00	F5	SXX
01S21	USA		V00	F5	SXX
01S21	USA		V00	F5	SXX
01S21	USA		V00	F5	SXX
01S21	USA		V00	F5	SXX
01S21	USA		V00	F5	SXX

FORM-011 11000

01821	USA		V00	F5	SXX
01821	USA		V00	F5	SXX
01821	USA		V00	F5	SXX
01821	USA		V00	F5	SXX
01821	USA		V00	F5	SXX
01821	USA		V00	F5	SXX
01821	USA		V00	F5	SXX
01821	USA		V00	F5	SXX
01821	USA		V00	F5	SXX
01821	USA		V00	F5	SXX
01821	USA		V00	F5	SXX

01S21	USA		V00	F5	SXX
01S21	USA		V00	F5	SXX
01S21	USA		V00	F5	SXX
01S21	USA		V00	F5	SXX
01S21	USA		V00	F5	SXX
01S21	USA		V00	F5	SXX
01S21	USA		V00	F5	SXX
01S21	USA		V00	F5	SXX
01S21	USA		V00	F5	SXX
01S21	USA		V00	F5	SXX
01S21	USA		V00	F5	SXX
01S21	USA		V00	F5	SXX
01S21	USA		V00	F5	SXX
01S21	USA		V00	F5	SXX
01S21	USA		V00	F5	SXX

2001 F150 After Inspection_TIS_FLAG	2001 F150 Repeat Repair_ID	2001 F150 Repeat Repair_MDL_YR	2001 F150 Repeat Repair_SORT_INDEX	2001 F150 Repeat Repair_VIN_CD
0	3	2001	5	3FTZF17291M
0	4	2001	6	3FTZF17281M
0	14	2001	25	3FTZF17231M
0	34	2001	57	2FTZF18281C
0	35	2001	58	2FTZF18251C
0	40	2001	74	2FTZF17281C
0	44	2001	84	2FTZF17211C
0	45	2001	85	2FTZF17201C
0	48	2001	85	2FTZF082X1C
0	51	2001	99	2FTZF07391C
0	59	2001	129	2FTZF07341C

K004-011 11803

6	66	2001	197	2FTZF07331C
8	70	2001	147	2FTZF07911C
9	77	2001	197	2FTZF07261C
9	78	2001	163	2FTRX18W51C
9	87	2001	178	2FTRX17L81C
9	85	2001	198	2FTRF17W81C
	106	2001	213	2FTPX17Z21C
9	108	2001	214	2FTPX17Z11C
9	108	2001	217	2FTPF18L71C
9	112	2001	222	2FTPF17Z81C
9	114	2001	227	1FTZX17ZX1N

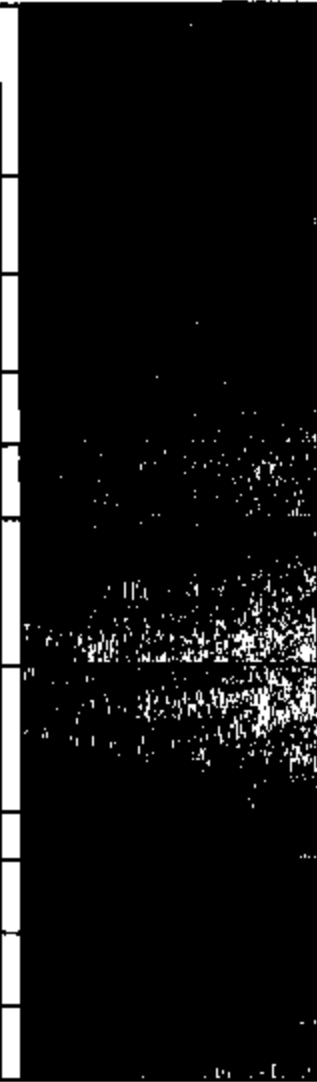


ROD-811 11694

117	2001	233	1FTZX17291NB
118	2001	236	1FTZX17291NA
129	2001	255	1FTZX17271NB
130	2001	258	1FTZX17271NA
131	2001	259	1FTZX17271NA
133	2001	264	1FTZX17261NA
141	2001	275	1FTZX17241NA
145	2001	280	1FTZX17211NA
165	2001	317	1FTZF172X1NB
168	2001	321	1FTZF172X1NA
184	2001	330	1FTZF17281NB
185	2001	332	1FTZF17281NB
186	2001	333	1FTZF17281NB

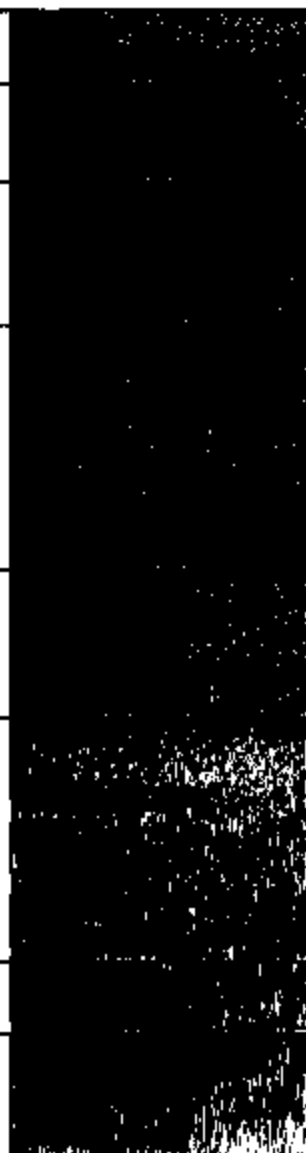


8	170	2001	340	1FTZF17281N
8	172	2001	342	1FTZF17281N
8	177	2001	351	1FTZF17281N
8	180	2001	372	1FTZF17271N
8	180	2001	373	1FTZF17271N
8	192	2001	375	1FTZF17271N
8	193	2001	376	1FTZF17271N
8	194	2001	377	1FTZF17271N
8	200	2001	380	1FTZF17261N
8	201	2001	390	1FTZF17201N
8	206	2001	390	1FTZF17251N



0	207	2001	405	1FTZF17251NE	
0	208	2001	408	1FTZF17251NA	
0	213	2001	416	1FTZF17241NE	
0	215	2001	420	1FTZF17241NE	
0	217	2001	423	1FTZF17241NE	
0	225	2001	438	1FTZF17231NA	
0	226	2001	437	1FTZF17231NA	
0	228	2001	439	1FTZF17231KA	
0	238	2001	467	1FTZF17211NE	
0	248	2001	474	1FTZF17201NE	
0	248	2001	475	1FTZF17201NA	

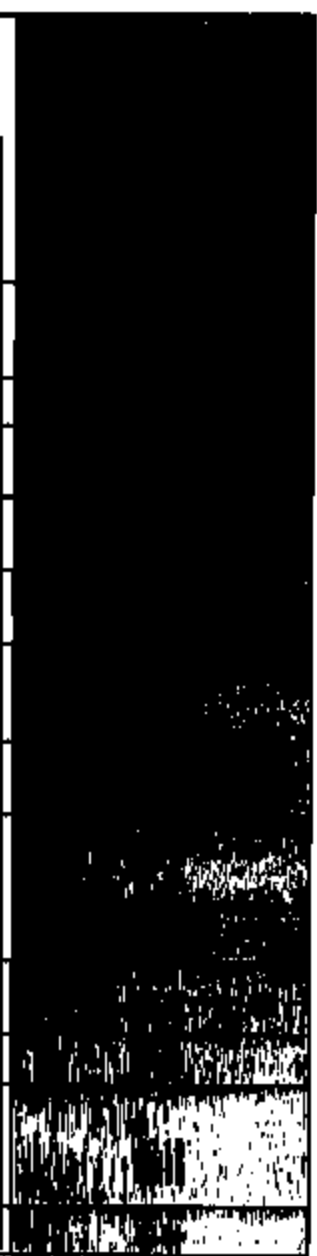
253	2001	483	1FTZF07281K
255	2001	484	1FTRX15W81N
256	2001	495	1FTRX15W91N
281	2001	508	1FTRX18W21N
265	2001	514	1FTRX18L91N
267	2001	517	1FTRX18L71N
277	2001	538	1FTRX17WX1K
280	2001	543	1FTRX17W81N



NO94-011 11895

Q	296	2001	574	1FTRX17W21N	
Q	306	2001	697	1FTRX17L71NA	
Q	311	2001	806	1FTRX17L41NA	
Q	312	2001	808	1FTRX08W71K	
Q	317	2001	831	1FTRW08W21K	
Q	324	2001	878	1FTRW08L81K	
Q	332	2001	701	1FTRW08L41K	
Q	334	2001	718	1FTRW08L21K	
Q	335	2001	731	1FTRW08L11K	
Q	340	2001	748	1FTRW07W81K	

Q	343	2001	764	1FTRW07LX1K
Q	344	2001	770	1FTRW07LB1K
Q	348	2001	798	1FTRW07LS1K
Q	362	2001	858	1FTRF16W11N
Q	372	2001	881	1FTRF17W71N
Q	375	2001	885	1FTRF17W81N
Q	379	2001	889	1FTRF17W81N
Q	383	2001	895	1FTRF17W41N
Q	385	2001	897	1FTRF17W31N
Q	387	2001	901	1FTRF17W11N
Q	393	2001	908	1FTRF17LX1N
Q	401	2001	929	1FTRF18L11N
Q	403	2001	932	1FTRF17LX1N



FORM 911 11510

2001 F150 Repeat Repair_VEH_LINE_CD	2001 F150 Repeat Repair_MKT_DERIVED	2001 F150 Repeat Repair_BOD_CAB_STL	2001 F150 Repeat Repair_VER_SERIES_CD	2001 F150 Repeat Repair_DRIVE_CD	2001 F150 Repeat Repair_ENG_CD
T/F5	*	T/BB	T/AM	T/B	T/LY
T/F5	*	T/BB	T/AM	T/B	T/LY
T/F5	*	T/BB	T/AM	T/B	T/LY
T/F5	*	T/BB	T/AM	T/E	T/LY
T/F5	*	T/BB	T/AM	T/E	T/LY
T/F5	*	T/BB	T/AM	T/B	T/LY
T/F5	*	T/BB	T/AM	T/B	T/LY
T/F5	*	T/BB	T/AM	T/B	T/LY
T/F5	*	T/BB	T/AM	T/E	T/LY
T/F5	*	T/BB	T/AM	T/B	T/WP
T/F5	*	T/BB	T/AM	T/B	T/WP

T/F5	*	T/BB	T/AM	T/B	T/WP
T/F5	*	T/BB	T/AM	T/B	T/WP
T/F5	*	T/BB	T/AM	T/B	T/LY
T/F5	*	T/BD	T/AM	T/E	T/WN
T/F5	*	T/BD	T/AM	T/B	T/VZ
T/F5	*	T/BB	T/AM	T/B	T/WN
T/F5	*	T/BD	T/AM	T/B	T/VZ
T/F5	*	T/BD	T/AM	T/B	T/VZ
T/F5	*	T/BB	T/AM	T/E	T/VZ
T/F5	*	T/BB	T/AM	T/B	T/VZ
T/F5	*	T/BD	T/AM	T/B	T/LY

T/F5	*	T/BD	T/AM	T/B	T/LY
T/F5	*	T/BD	T/AM	T/B	T/LY
T/F5	*	T/BD	T/AM	T/B	T/LY
T/F5	*	T/BD	T/AM	T/B	T/LY
T/F5	*	T/BD	T/AM	T/B	T/LY
T/F5	*	T/BD	T/AM	T/B	T/LY
T/F5	*	T/BD	T/AM	T/B	T/LY
T/F5	*	T/BD	T/AM	T/B	T/LY
T/F5	*	T/BD	T/AM	T/B	T/LY
T/F5	*	T/BB	T/AM	T/B	T/LY
T/F5	*	T/BB	T/AM	T/B	T/LY
T/F5	*	T/BB	T/AM	T/B	T/LY
T/F5	*	T/BB	T/AM	T/B	T/LY