

RQ04-011
FORD
APRIL 26, 2005
REQUEST 8
PART 3 OF 6
BOOKS 29 OF 43

29 X-Ref. TO VORBAKINS

9-80 Hour Work Schedule Timekeeping EXAMPLES

Shift #3

XOTUG5 REVIEW TIME RECORD -- DAY ENDING: 03-15-02 C7/03/01 09:28:07

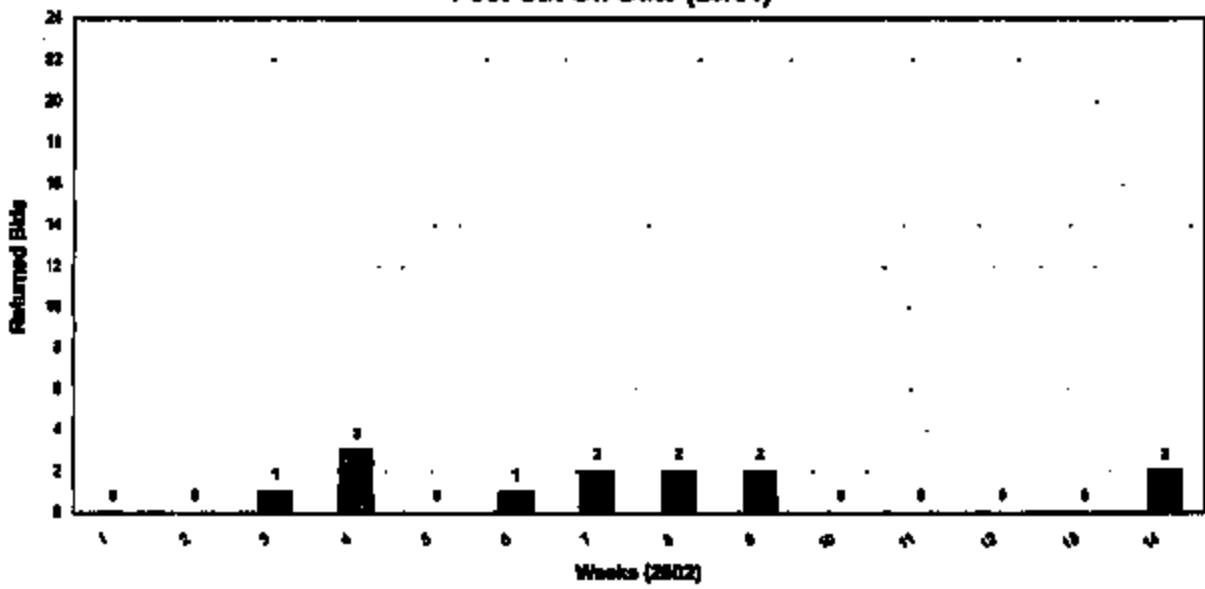
EMPLOYEE INFORMATION										SCHEDULE INFORMATION														
EMPLOYEE					SCHEDULE					EMPLOYEE					SCHEDULE									
EMPL-ID	S	START	QUIT	ABSEPT	O/T	SP	D	DAY	H	TIME	TIME	CD	HRB	MRS	CD	D	DAY	H	TIME	TIME	CD	HRB	MRS	CD
NAME: C ANYNAME										LOC: 1234 DEPT: A9999														
01	FR			R			11	MO	3							12	TU	3						
02	SA						13	WE	3							14	TH	3				V	09.0	
03	SU						15	FR													R			
04	MO	3					16	TU	3							17	WE	3	11:00	10:00				01.0
05	TH	3					18	FR	3							19	SA							
06	SA						20	SU								21	FR							
07	SU						22	SA								23	SU							
08	FR						24	SA								25	SU							
09	SA						26	SU								27	FR							
10	SU						28	SA								29	SU							
							30	FR								31	SA							

- Friday, 3-01-02, is a continuation of the previous week's time statement and the special code is carried forward.
- Record the special code '1' on the Monday line of the first week of the two-week schedule.
- Record the special code '2' on the Monday line of the second week of the two-week schedule.
- Record a '3' in the absence code column on the day the 3 hours will be worked in the two-week schedule.
- If one Holiday occurs in the two-week schedule, the Holiday is the 8-hour day and the # is not required.
- Record an 'R' in the absence code column on the one scheduled day off in the two-week schedule.
- The start time, quit time, the shift code (if applicable), and any approved overtime hours must be recorded on the approved time statement to receive premium payments.
- Any absences (paid or unpaid) must be recorded with the appropriate absence code and the number of hours taken, up to 8 hours may be recorded per day, up to 40 hours total in the two-week period.
- If the time off occurs on the 8-hour day, repeat the Hae, record the 'R' on the first line and the absence code and hours on the second, repeated line.

~~CONFIDENTIAL~~

4 3
5 1
6 1
7 2
8 2
9 2
10 0
11 0
12 0
13 0
14 2

GLOBAL BUCKLES WARRANTIES Post Cut Off Date (23/01)



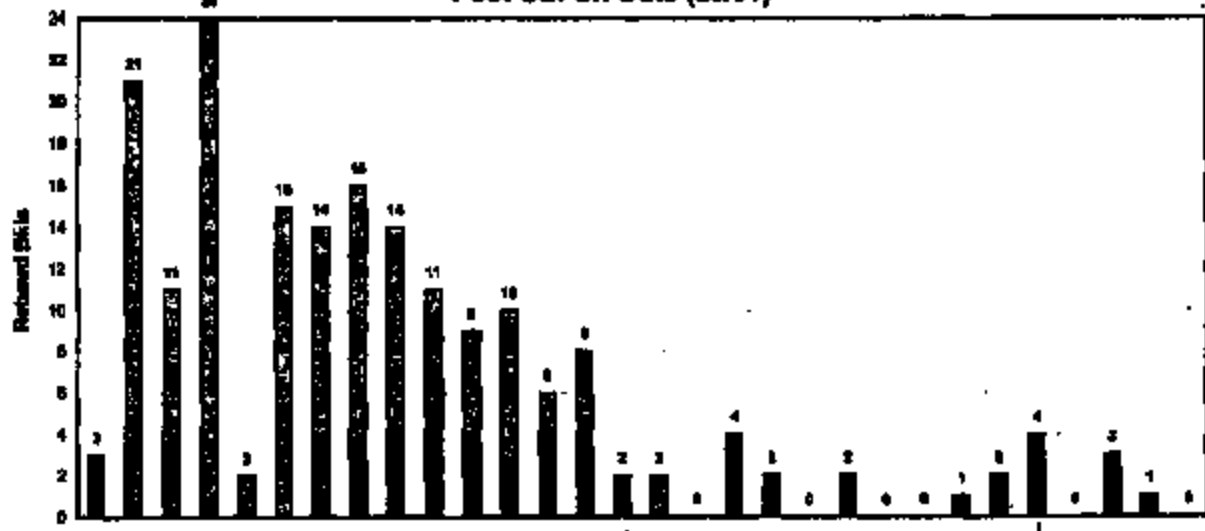
RQ04-011 10025



TRW₁₀₀₀

GLOBAL BUCKLES WARRANTIES Post Cut Off Date (23/01)

Actuals
Mtd



20 3
 19 21
 18 11
 17 24
 16 2
 15 24
 14 14
 13 18
 12 11
 11 8
 10 10
 9 2
 8 2
 7 2
 6 4
 5 9
 4 2
 3 8
 2 1
 1 1
 0 1
 0 1

2/10
 1/10
 Cut Off Date (23/01)
 Follows cut

ADD Revision Date

TRW SEAT BELT BUCKLE

TASK FORCE ASSIGNMENTS AND RESPONSIBILITIES

3. Can TRW Europe engineering help US to receive/ Conduct a Fresh Eyes Review.	Lorraine Mayhew Charlie Stallone	LMAYH@WV22-1178 CHARLIE.STALLONE@TRW.COM	European Trip Review completed. Review already present reviewed. <i>Said to Mr. J. Williams</i>	6/25	TBD
4. Data Acquisition - Verify effectiveness of corrective action for the 3 next states. Define/After data required. When will parts be completely acceptable?	Carlo Kallin	CKALLIN@WV22-1178	-Need copies of before/after vibration data, on 6/20 -Carlo Kallin to schedule meeting with Mitty, Lorraine, Jatic, Hal McGovern and Rob Elin. Need to generate work plan -Plan to start with 14D data supplied, and see what's missing. -Will be tied to 6/21 and 6/22. -Bill Kasper in FAX.	6/20	TBD
5. TRW to Conduct DVA of Buckle	Ed Poloni	EDPOLON@TRW.COM	-TRW to conduct DVA -Ed to contact John on 6/22 with data review date anticipated.	7/22/01 TBD	TBD
6. 3D Piece Layout of Buckle Us and European Components	Lorraine Mayhew TRW - TBD	LMAYH@WV22-1178	-Good part and hard part lay-out required. -Plan to discuss details at meeting called by Carlo.	TBD	TBD
7. Follow-up of Quality Action Items	Mitty Veizer Bill Lee	MVEIZER@WV22-1178 BLEE@WV22-1178 BIL.MCGOVAN@TRW.COM	Need to ensure processes and controls are being followed and adjusted as in TRW Rayson plan.	6/13	TBD
8. 14D Paper	John Zyzanski	JYZANSKI@WV22-1178	Tech Review scheduled for 6/21.	6/21	On-Going
-Plastics	Bob Ebling	BEBLING@WV22-1178	Tech Review scheduled for 6/21.	6/21	On-Going
-Quality Data	Rita Anderson	RANDER@WV22-1178	Sealing required by early plant and by State or Region, in which plants were made. Also requested TGW data and NHTSA VOQ data. Working for volumes by state, to accompany data	TBD	TBD
9. Buckle Inspection Procedure	Alto Philip Ed Schlage	APHILIP@WV22-1178 EDSCHLAF@TRW.COM	-New tool and procedure reviewed and sign-off on 6/21. -Key Life Tooling up and running. Report out 6/23. -Steve Perle in contact ODC, on tool availability.	6/21 6/23	TBD
10. Buckle Tool - Beam Arrow	Alto Philip Ed Schlage	APHILIP@WV22-1178 EDSCHLAF@TRW.COM	-TRW reviewed tool and gauge with Ford V.I. on 6/20. -Improved tool, with less force exert, required. -Need to determine effect of temperature on beam arrow. -TRW tested 15 rejected buckles from cart, at ambient temp of 136 degrees, and found the buckles performed correctly. Pad sense 15 in cold temp and will report out results on 6/23.	6/27	TBD
11. New Tools required for APQ, MPQ, LPO, etc., for Pre-Production vehicles	Alto Philip Ed Schlage	APHILIP@WV22-1178 EDSCHLAF@TRW.COM	-Tools and procedures used in to shipped to APQ, MPQ and LPO 1 tool per site. -Janice Sotralis in contact at MPQ, X-20461. Edie Kallin in contact at APQ, 9-1-753-7361. -Need to broadcast procedure details, e.g. insert quickly and firmly, etc.	6/28	6/15
12. Other Vehicle Actions -Capture Pre-Production Parts and Units, e.g. crash, durability	Bill Egan	WEGAN@WV22-1178	-Bill contacted PVT Managers. -Need to broadcast procedure details, e.g. insert quickly and firmly, etc.	6/18	6/18
13. WBS Comparison	Mike Anderson Rita Stallone	MANDER@WV22-1178 RSULLPV2233-1168	-Will coordinate release for all Buckles affected. -Engage per customer identification.	6/25	7/2

RC04-011 10054

TRW SEAT BELT BUCKLE

TASK FORCE ASSIGNMENTS AND RESPONSIBILITIES

		<u>DAVE BENNEN@TRW.COM</u>	-Gather parts for all CR's, agree been performed and approved. -Mike Sullivan to report out next week. -Dan Nelson offering help for coordination.		
18. Structural Analysis of Parts Returned from Field Repair and Best Supplies	Georges Elie: Jim McCowan	GUECHEL@TRW JIM.MCCOWAN@TRW.COM	Chairs supplied on 8/14. Gordon to summarize on 8/18	6/25	1/30
19. STA to schedule FABS review	Bill Lam	BL26304-3330	-Completed as part of Prevent Action Closure procedure.	6/25	1/30
20. Compile materials on Merrill and to see if suggestions regarding different follow ups associated with weeks 10 through 16 can be supported.	Charles Stollwe	CHARS.STOLLWE@TRW.COM		6/25	
19. Get data from all vehicles impacted at Jumper location to support 18 above	Ed Polocz	EdPolocz@trw.com	-need access to vehicles at JD Steve Parkins to investigate	6/25	
20. Obtain replacement parts for JD vehicles and evaluate them with regard to cost cases.	Ed Polocz	EdPolocz@trw.com	-need access to vehicles at JD Steve Parkins to investigate	6/25	
21. Provide an updated Mini Line with all TRW assemblies at the assembly plant to support the analysis from 18, 19, and 20 above.	Charles Stollwe	CHARS.STOLLWE@TRW.COM		6/25	
22. Compile gaps related by paper to demonstrate the accuracy of the gaps and document all studies.	Ed Schlap	ESCHLAP@TRW.COM	Report to include gaps, RFR study, documentation of JD inspection, pilot plant data, and guest room P130 data.	6/25	
23. Completion of Service Parts Required	Norm Carver John Becho	NCARVER@TRW.COM JOHN.BECHO@TRW.COM 956-672-8115 X-3254			

Deb
 DIANGELO
 ADD:
 DMALECKI
 Paul Goe
 PGORSKI
 ADD Revision Date

TRW SEAT BELT BUCKLE

6/23

TASK FORCE ASSIGNMENTS AND RESPONSIBILITIES

ASSIGNMENT	RESPONSIBLE	CONTACT INFORMATION	STATUS	START DATE	END DATE
2. Can TRW Europe engineers help US to conduct a Root Cause Review.	Lorraine Marple Charlie Steffen	LORRAINE 323-7175 CHARLIE STEFFEN@TRW.COM	European Trip Review complete. Results of trip report required.	6/25	TBD
4. Data Acquisition - Verify effectiveness of sensors & actuators for the 5 root causes. Before A/R data required. What will parts be completely acceptable?	Curtis Kallen	CRALINA 360-6110	-Curtis Kallen to schedule meeting with Merry, Lorraine, Jude, Jim McGowan and Bob Ellis. Need to generate work plan. -Plan to start with IAD data supplied, and see what's missing. -Will be tied to 4/20 and 4/26.	6/20	TBD
5. TRW to Conduct DVA of Buckle	Ed Falcar	ED.FALCAR@TRW.COM	-TRW to conduct DVA. -Ed to contact Ade on 6/22 with data review date anticipated.	TBD	TBD
6. 3D Print Layout of Both US and European Components	Lorraine Marple TRW - TBD	LORRAINE 323-7175	-Good part and bad part by not required -Plan to discuss details at meeting called by Curtis	TBD	TBD
7. Follow-up of Quality Actions Taken	Mary Yockler Bill Lee	HYOELKID1903141 BLEX 360-5393 BM.MCGOWAN@TRW.COM	Need to ensure processes and controls are being followed and adhered to at TRW Reynolds plant.	7/15	TBD
9. 14D Paper	Julia Zychewski Bob Hilling Devinder Sahra Rita Anderson	JZYCHOWP223-0098 BHILLING@TRW.COM R.HILLING 323-9264 DS.DHU 323-4752 RANDER30 323-9438	Tech Review scheduled for 6/21. Setting required by early place and by date of Report, in which items were made. Also requested TOW data and NHTSA VDIQ data. Waiting for validation by team, in agreement date.	6/21 6/21 TBD	Go-Going Go-Going TBD
10. Buckle Inspection Procedure	Abe Philip Ed Schlappe Sara Parkin	APHILIP394-1134 ED.SCHLAPPE@TRW.COM SPARKIN1248-7618	-New tool and procedure reviewed and sign-off on 6/21. -Key Life Tooling up and running. Report out 6/25.	6/21 6/25	TBD
11. Buckle Tool - Beta Error	Abe Philip Ed Schlappe	APHILIP394-1134 ED.SCHLAPPE@TRW.COM	-TRW reviewed tool and gauge with Ford V&A on 6/20. -Improved tool, with less beta error, required. -Need to determine effect of temperature on beta error.	6/21	TBD
12. New Tools required for APQ, MPQ, DPG, etc. for Pre-Production vehicles.	Abe Philip Ed Schlappe	APHILIP394-1134 ED.SCHLAPPE@TRW.COM	-Tools and procedures need to be shipped to APQ, MPQ and DPG 1 tool per site. -James Schmitz is contact at MPQ, X-2861. Eric Kuster is contact at APQ, 6-1-753-7261. -Need to know exact procedure details, e.g. insert quickly and firmly, etc.	6/20	6/25
13. Differ Velocity Allowed -Capture Pre-Production Parts and Units, e.g. crack, dentable	Bill Eggen	WEAGAN 394-3611	-Bill contacted PVT Managers. -Need to know exact procedure details, e.g. insert quickly and firmly, etc.	6/18	6/18
14. WERS Coordination	Mike Andrew Rita Sullivan	MANDRUS 323-1187 RSULLIV2323-1168 DAVE.HENNESSEY@TRW.COM	-Will coordinate releases for all buckles affected. -Engagement per machine identified. -Generic words for all CB's have been reviewed and approved. -Mike Sullivan to report out next week. -Rita Sullivan offering help for coordination.	6/25	TBD
15. Statistical Analysis of Parts Returned from Ford Plants and	Gordon Richter	GORHEI 211-8698	Charts supplied on 6/18. Order to summarize on 6/18.	6/25	TBD

RC04-011 10026

TRW SEAT BELT BUCKLE

TASK FORCE ASSIGNMENTS AND RESPONSIBILITIES

Task/Assignment	Person	Contact Info	Notes	Start	End
17. STA to coordinate PAAI review	Bill Lee	BLEE 390-4383	Required as part of Pre-pair Active Closure procedure.	6-25	180
18. Compile statistics on NHTSA seat as set of propositions regarding different failure modes associated with weeks 10 through 16 can be supported	Charlie Boffice	Charlie.boffice@trw.com		6-27	
19. Get data from all vehicles reported at Jerome Duncan to support 18 above	Ed Palmer	Ed.palmer@trw.com	Need access to vehicles at JD Steve Perkins to investigate	6-27	
20. Obtain replacement parts for JIS cables and evaluate them with regard to root cause	Ed Palmer	Ed.palmer@trw.com	Need access to vehicles at JD Steve Perkins to investigate	180	
21. Provide an updated time line with all TRW activities in the activity plan to support the team on floor 18, 19, and 20 above	Charlie Boffice	Charlie.boffice@trw.com		180	
22. Complete gap reliability paper to document the accuracy of the gaps and document all studies	Ed Schlippe	EDSCHLIP@TRW.COM	Report to include gap RFR study, documentation of JD inspection, pilot plant data, and recent recent FISO data	6-29	

*45k Temp
15. buckle/surfact*

*220F
20F
20F*

180: COMPACTOR

DATA COLLECTED BY FRIDAY

list for Service

*John Casper
John Boffice
180: 6-22-5118
X-2254*

TRW SEAT BELT BUCKLE



TASK FORCE ASSIGNMENTS AND RESPONSIBILITIES

Task Description	Task Assignee	Task Contact Information	Task Status	Task Completion Date	Task Notes
17 STA to determine PASS criteria	Bill Lee	BLEE 980-3393	Required as part of Product Action Closure procedure.	4/25	TBD

RC04-011 10069

TRW SEAT BELT BUCKLE

TASK FORCE ASSIGNMENTS AND RESPONSIBILITIES

ITEMS	RESPONSIBLE	CONTACT INFO	STATUS	START DATE	END DATE
2. Can TRW Europe engineering help US to resolve? Conduct a Fresh Eyes Review.	Lorraine Morpaw Charles Beckton	LMORP@TRW.COM CBECK@TRW.COM	European Trip Review complete - Report prepared	6-20	TBD
4) Data Acquisition - Verify effectiveness of corrective actions for the 3 most common Defects: After data requested when will parts be completely acceptable?	Curio Kallin	CKALLIN@TRW.COM	Hand Stamp of Defects A Report prepared data on 6-21	6-20	TBD
5) TRW to Contact DVA of Buckle	Ed Palmer	EDPALM@TRW.COM	TRW to contact DVA - Results to be reviewed in 1 week.	6-25	TBD
6) 3D Print Layout of Both US and European Components	Lorraine Morpaw TRW - TBD	LMORP@TRW.COM	3D print layout of components - TBD	TBD	TBD
7) 14D Paper	Jelle Zylstra Bob Hilling	JZYLSTR@TRW.COM RHILLING@TRW.COM	Task Review scheduled for 6-21	6-18	On-Going
- Process			Task Review scheduled for 6-21	6-18	On-Going
- Quality Data	Devinder Sidhu Ran Anderson	DSIDHU@TRW.COM RANDER@TRW.COM	Sorting required by 4th plant and by State or Region, as a final cleanup work made. Also requested IGW data and NHTSA VQG data	6-20	TBD
9. Double Inspection Procedure	Alan Philip Ed Schlage Steve Parkins	APHILIP@TRW.COM EDSCHLA@TRW.COM	- Personnel matrix at RND/DC - Need to review and sign-off new tool and procedure - Key Life Testing required	6-20	TBD
10. New Tools required for APG, NPG, DPG, etc. for Pre-Production schedule.	Alan Philip Ed Schlage	APHILIP@TRW.COM EDSCHLA@TRW.COM	- Tools and procedures need to be shipped to APG, NPG and DPG - Tool part list - James Schaefer in contact at NPG, X-2840 - Eric Kuster in contact at APG, 9-1-733-7261	6-20	6-25
12. WERS Coordination	Steve Arnold Jim Sullivan	MANDRO@TRW.COM JSULLIVAN@TRW.COM	- WERS coordinate review for all families affected. - Need engineer from each CPG - Supervisors to identify which impact	6-23	TBD
13. Follow-up of Quality Action Items	Merry Vashee Bill Lee	MVASHEE@TRW.COM BLEE@TRW.COM	Need to ensure processes and controls are being followed and adhered to at TRW Rayson plant	6-20	TBD
14. Statistical Analysis of Parts Returned from Field Plants and Seat Suppliers	Charles Kitch Jim McGowan	CKITCH@TRW.COM JIMMCGOWAN@TRW.COM	Start application of 8D. Gather information on 6-11	6-18	TBD
16. STA to schedule VASS review	Bill Lee	BLEE@TRW.COM	VASS review	6-25	TBD
19. Risk Review			Risk Review		

Write down findings, what is available

W/John

UP & Responsible

For review

Insert blank for Frank

Buckle Latch
ISSUE #196

BUZ 16634

RQ04-011 10321

TRW SEAT BELT BUCKLE

TASK FORCE ASSIGNMENTS AND RESPONSIBILITIES

ASSIGNMENT	RESPONSIBLE	PHONE NUMBER	STATUS	START DATE	END DATE
• Check TRW Europe regarding help US to resolve/ conduct a Fresh Eyes Review.	Lorraine Morphis Charlie Stoltz	LMO@TRW/312-7876 CHARLIE.STOLTZ@TRW.COM	European Ytg Review complete. Results of help report required.	6/25	TBD
• Data Acquisition - Verify effectiveness of corrective actions for the 3 root causes. DeRowAfter data required. When will parts be completely acceptable?	Chris Kahan	CKAHNA@94-3130	-Need status of RootCause verification data on 6/20. -Chris Kahan to schedule meeting with Murty, Lorraine, Patia, Jim McGowan and Bob Ellis. Need to generate work plan. -Plan to start with L&H data supplied, and see what's missing. -Will be tied to PE and SE.	6/20	TBD
• TRW to Conduct DVA of Buckle	Ed Patocz	EPATOC@TRW.COM	-TRW to conduct DVA. -Ed to contact Jelle on 6/22 with data require date anticipated.	TBD	TBD
• 3D Piece Layout of Both US and European Components	Lorraine Morphis TRW - TBD	LMO@TRW/312-7876	-Final part and tool part lay-out required.	TBD	TBD
• Follow-up of Quality Action Taken	Mary Voelker Bill Lee	MVOELKER@94-3141 BLEE190-3395 JBLMCGOWAN@TRW.COM	-Need to ensure processes and controls are being followed and tailored to at TRW Dayton plant.	7/15	TBD
• J4D Paper	Julie Kozlovicz	JKOZOV@94-3121-8086 JULIE.KOZLOVITZ@TRW.COM	Tech Review scheduled for 6/21.	6/21	On-Going
Financials	Bob Harding	RHARDING@94-3123-9264	Tech Review scheduled for 6/21.	6/21	On-Going
Quality Data	Dorinda Shikin Erik Anderson	DSHINK@94-3123-9264 RANDER10@94-3123-9406	Sampling required by any plans and by State or Region. In which cases use auto. Also requested TOV data and NHTSA VIOQ data. Waiting for volume by state, to normalize data.	TBD	TBD
0 Buckle Inspection Procedures	Alto Phillip Ed Schlage Steve Espino	APHELIP@94-1134 EDSCHLAP@TRW.COM STARKD@94-3126-7810	-New to it and procedure reviewed and sign-off on 6/21. -Key L&H working up and running. Report out 6/25.	6/21 6/25	TBD
1. Buckle Tool - Best Error	Alto Phillip Ed Schlage	APHELIP@94-1134 EDSCHLAP@TRW.COM	-TRW reviewed tool and gauge with Ford V.O. on 6/20. -Supervised tool, with best beta error, required. -Need to determine effect of temperature on beta error.	6/21	TBD
2. New Tools required for APQ, MPQ, DPO, etc., for Producing vehicles.	Alto Phillip Ed Schlage	APHELIP@94-1134 EDSCHLAP@TRW.COM	-Tools and procedures need to be shipped to APQ, MPQ and DPO. 1 and per site. -Jozana Schanda is contact at MPQ, X-20461. Eric Kahan is contact at APQ, P-1-753-7261. -Need to broadcast procedure details, e.g. insert quality and beta site.	6/20	6/25
3. Other Vehicle Affected Capable Pre-Production Parts and Units, e.g. crash, durability	Bill Egan	WEADAN@94-3811	-Bill contacted FVT if necessary. -Need to broadcast procedure details, e.g. insert quality and beta site.	6/18	6/18
4. WERS Coordination	Mike Andrus Rita Belliver	MANDRUP@94-1167 RSULLPV@94-1160 DAVID.HENNESSEY@TRW.COM	-Will coordinate release for all buckles affected. -Engineers per writing identified. -Customer wants for all CR's, have been reviewed and approved. -Rita Belliver to support out next week. -Eric Nelson advising help for tooling team.	6/25	7/2
5. Statistical Analysis of Parts Returned from Ford Plants and	Cheryl Rabin	CRABER@94-8081	Charts supplied on 6/18. Copies to be supplied on 6/18.	6/25	TBD

BUZ 18722

TRW SEAT BELT BUCKLE

TASK FORCE ASSIGNMENTS AND RESPONSIBILITIES

	Jim McQueen	JIM.MCQUEEN@TRW.COM		
	BO Lee	BO.LEE@TRW.COM	Registered in state of Vermont. Action Closure procedure.	TBD
regarding different failure test associated with modes 18 through 16 may be supported.	Charlie Matthews	Charlie.mathews@trw.com		
9. Get data from all vehicles inspected at Ferris Division to support 18 above	Ed Palmer	Ed.palmer@trw.com	Send access to vehicles at JD. Steve Purkins to coverage	5/27
D. Obtain replacement parts for JD vehicles and evaluate test results against to new criteria.	Ed Palmer	Ed.palmer@trw.com	Send access to vehicles at JD. Steve Purkins to coverage	TBD
1. Provide an updated time line with all TRW activities at the monthly plan to support the analysis from 18, 19, and 20 boxes.	Charlie Matthews	Charlie.mathews@trw.com		TBD
3. Complete gaps vehicle try paper to demonstrate the accuracy of the gaps and document all results	Ed Schlegel	ED.SCHLEGEL@TRW.COM	Report to include gaps Z&R, and, documentation of JD inspection, pilot plant data, and most recent F130 data.	8/29

BUZ 18723

RQ04-011 10323

From: Morpew, Lorraine (L.M.)
Sent: Wednesday, July 18, 2001 10:23 AM
To: Zychowicz, Julie (J.A.)
Subject: FW: Updated TRW Buckle - Task Force Matrix

-----Original Message-----

From: Tuesday, July 03, 2001 12:50 PM
Sent:
To: Dowell, Greg (G.G.); Maczwick, Roy (R.A.); Morpew, Lorraine (L.M.); Kalina, Curtis (C.D.); Lee, William (W.E.);
'dave.honnasay@trw.com'; 'bill@trw.com'; 'ed.pelczar@trw.com'; Voelker, Martin (M.C.); Egan, William (W.C.); Maxwell,
Thomas (T.F.); Carver, Norman (N.B.); Sullivan, Rita (P.); Andrus, Michael (M.L.); Mitchell, Derrick (D.); Hilding, Robert (R.L.);
Anderson, Rita (R.); Philip, Abraham (A.G.); Richel, Gordon (G.); Ferrelukle, Paul (P.G.); Landis, Leonard (L.A.); Downs, Jim (J.C.);
Brown, Jerry (J.R.); Sweeney, Stephanie (S.L.); Osborne, William (W.H.); Diangelo, Deborah (D.A.); Milecki, David (D.B.); Gorski,
Paul (P.E.)
Subject: Updated TRW Buckle - Task Force Matrix

Bill - I haven't been involved in the meetings lately and will be on vacation the rest of the week. Here's the latest matrix per the limited info I have.

All - Please feel free to modify and send back to me to update and distribute.



buckletaskforce1.d
oc (70 KB)

TRW SEAT BELT BUCKLE

TASK FORCE ASSIGNMENTS AND RESPONSIBILITIES

ASSIGNMENTS	RESPONSIBLE PERSON	PHONE NUMBER	STATUS	START DATE	COMPL. DATE
1. Will reports to Steve on temporary belt...	Lorraine Morphew Charlie Stephens	LMORPHEW/322-7676 CHARLIE.STEPPENS@TRW.COM	European Trip Review complete. Minutes of trip report to be prepared on 7/28/01 with Corrie, Lorraine and TRW.	7/8	1/01
2. Western Company The Project is: Legal Joseph, Martin, Junior Letter accounts for the 5 seat cases. Before/After data required When will parts be completely acceptable?	Corrie Kahan	CKAHAN/390-5130	-Final Status of Before/After verification data on 6/20 -Corrie Kahan to schedule meeting with Mary, Lorraine, John, Jim McKeown and Rob Ellis. Need to generate work plan. -Plan to start with 14D data supplied, and see what's missing -Will be tied to PS and 46 -Bill Engert to PVU.	6/20	TBD
3. TRW to Conduct DVA of Buckle	Ed Pelczar	ED.PELCZAR@TRW.COM	-TRW to conduct DVA.	7/22	TBD
4. 3D Floor Layout of Both US and European Components	Lorraine Morphew TRW - TBD	LMORPHEW/322-7676	-Good part and had part lay-out request. -Plan to discuss details at meeting called by Corrie. -Plan to discuss with TRW on 7/5 meeting.	7/5	TBD
7. Follow-up of Quality Action Tables	Mary Venker Bill Lee	MVENKER/390-5141 BLEE/390-5393 MVENKER@TRW.COM	Need to ensure processes and controls are being followed and adhered to at TRW Rayson plant.	7/15	TBD
8. 14D Paper	Michelle Fagan	MFFAGAN/390-5141			
-Phenolics -Quality Data	Rob Hitting Rita Anderson	RHITTING/322-9264 RANDER30/323-9436	Next Tech Review - TRW. FAPS Review scheduled for 7/24. Next Tech Review - TBD. Scoring required by early plant and by State or Region, in which class was made. Complaints, with no temperature effects specified. Also requested TRW data and NHTSA VOQ data. Supplied by Ford Quality.	TBD 6/28	On-Going Closed
10. Buckle Inspection Procedure	Abe Philip Ed Schlapf Steve Parkin	APHILIP/394-1134 ED.SCHLAPF@TRW.COM SPARKIN3/248-7610	-New tool and procedure reviewed and sign-off on 6/21 -Key Life Testing up and running. Report out 6/25 -Steve Parkin to contact OOC, as tool availability. -NEED UPRATE	6/21 6/25	TBD
11. Buckle Tool - Beta Error	Abe Philip Ed Schlapf	APHILIP/394-1134 ED.SCHLAPF@TRW.COM	-TRW review of tool and gauge with Ford V.O. on 6/20. -Improved tool, with less beta error, required. -Need to determine affect of temperature on Beta error. -TRW tested 15 injected buckles from acct. at ambient temp of 136 degrees, and found the buckles performed correctly. Put more 15 in cold temp and will report out results on 6/27. -NEED UPRATE	6/27	TBD
12. New Tools required for APCL, MPO, DPG, etc. for Pre-Production vehicles.	Abe Philip Ed Schlapf	APHILIP/394-1134 ED.SCHLAPF@TRW.COM	-Tools and procedures need to be shipped to APCL, MPO and DPG 1 tool per site. -Lorraine Schlapf to contact at MPO, X-28561. Eric Kuska is contact at	6/20	6/25

Julie Zychowicz/jzychow
BuckleTaskforce1.word

Date Created: 6/12/01
Date Revised: 12/10/04

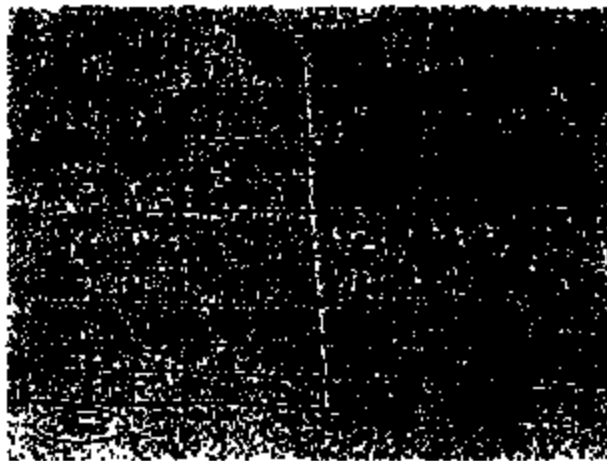
TRW SEAT BELT BUCKLE

TASK FORCE ASSIGNMENTS AND RESPONSIBILITIES

			APR 8-1-953-7251. -Need to broadcast procedure details, e.g. insert quickly and firmly, etc.		
13. Other Vehicles Affected -Capture Pre-Production Parts and Units, e.g. crash, assembly	Bill Bagan	WEADAN394-3618	-Bill contacted PVT Managers -Need to broadcast procedure details, e.g. insert quickly and firmly, etc.	6/18	6/18
14. WEBS Coordination	Mika Andrus Rita Sullivan	MANDRE/325-1187 RSULLIV3/323-1160 DAY.B.HINNESSY@TRW.COM	-Will coordinate releases for all buckles affected. -Buckles per codes identified -Ongoing work for all CR's have been reviewed and approved -Rita Sullivan to report our next work -Dix Nelson offering help for coordination -NEED UPDATE	6/23	7/2
15. Statistical Analysis of Parts Returned from Road Plots and Seat Suppliers	Gordon Ritchie Jim McCowan	DRITCHI2/38-8098 JIM.MCCOWAN@TRW.COM	Charts supplied on 6/18. Gordon to summarize on 6/18.	6/23	7/2
17. STA to schedule FASE review	Bill Lee	BLEE0390-5393	-Requested as part of Provent Active Closure procedure. -FASE Review Meeting Scheduled for 7/24.	6/25	7/2
18. Compile statistics on Norfolk seat to see if suppression regarding different failure rates associated with weeks 10 through 16 can be supported.	Charlie Staffins	Charlie.staffins@trw.com	-NEED UPDATE	6/29	
19. Get data from all vehicles impacted at Lansing Decca to support 18 above	Ed Pelczar	Ed.pelczar@trw.com	-NEED UPDATE	6/29	
20. Obtain replacement parts for ID vehicles and evaluate them with regard to success.	Ed Pelczar	Ed.pelczar@trw.com	-NEED UPDATE	6/29	
21. Provide an updated time line with all TRW activities at the assembly plant to support the analysis from 18, 19, and 20 above	Charlie Staffins	Charlie.staffins@trw.com	-NEED UPDATE	6/29	
22. Compile gage reliability paper to demonstrate the accuracy of the gage and document ID studies.	Ed Schlaep	ED.SCHLAEP@TRW.COM	Report to include gage R&R study, documentation of ID inspection, pilot plant data, and most recent FLSO data.	6/29	
23. Completion of Service Parts Request	Norm Carver John Burke	NCARVER/266-5518 JOHN.BURKE@TRW.COM 936-832-6113 X-2234			

RC04-011 10306

Julie Zychowicz/jzychewi
Buckletaskforce1.word



BUZ 18863

RQ04-011 10446

13

1

11

7

11

8

The image shows a grid of 8 rows and 8 columns of black and white patterns. Each cell in the grid contains a different arrangement of horizontal and vertical lines, creating a complex, textured appearance. The patterns vary in density and orientation, suggesting a data matrix or a barcode. The grid is oriented vertically on the page.

RUZ 19895

RC04-011 09858

SEAT BELT BUCKLE INSPECTION AND/OR REPLACEMENT PROCEDURE

AFFECTED VEHICLES: CERTAIN 2001 MODEL YEAR CROWN VICTORIA, EXCURSION, EXPEDITION, F-150, F-SUPER DUTY, GRAND MARQUIS, NAVIGATOR, RANGER, TOWN CAR AND WINDSTAR

OVERVIEW

Less than 2% of the affected vehicles are expected to need seat belt buckle replacement. This document contains the necessary information for inspecting and, if necessary, replacing the driver and/or passenger seat belt buckle assembly(s) on the affected vehicles. Center seat belt buckles are not affected. A special tool has been developed to identify faulty buckles and make sure the inspection of the buckle mechanism is consistent each time it is performed. Although the special tool has been developed to identify 100% of the potentially faulty buckles, it can identify good buckles as faulty. This is an acceptable issue. If the tool identifies any buckle as faulty, it must be replaced. This document also contains amendments to the Workshop Manual sections relating to buckle replacement. Be sure to read this document before attempting to replace the seat belt buckles.

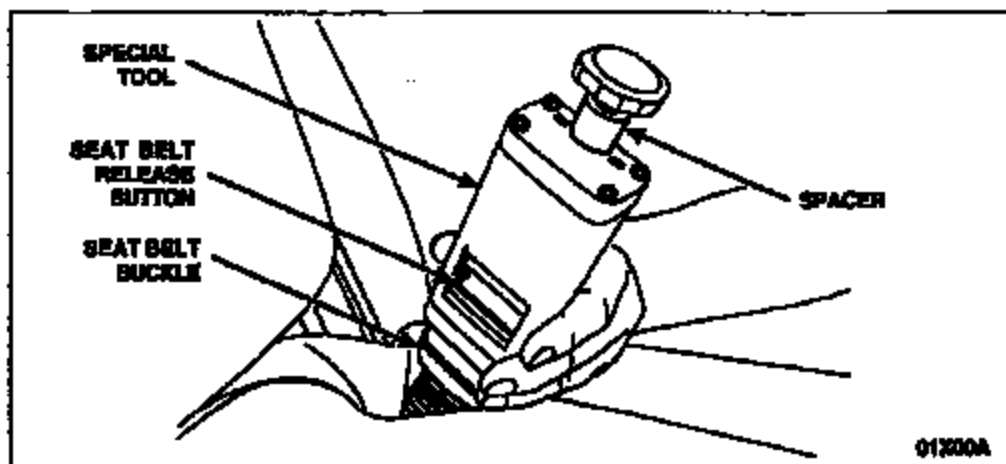
INSPECTION

WARNING: FAILURE TO USE THE SPECIAL TOOL AS INSTRUCTED IN THIS INSPECTION CAN ALLOW A FAULTY BUCKLE TO PASS THE INSPECTION. MAKE SURE TO USE THE TOOL EXACTLY AS INSTRUCTED IN THE INSPECTION PROCEDURE.

- NOTE: Make sure that the knob on the special tool is fully extended (unscrewed) before installing it on the buckle.



Press and release the red seat belt release button located on the driver side seat belt buckle. Then, install the special tool onto the driver side seat belt buckle and hold it in place. See Figure 1.

**FIGURE 1**

Ford Motor Company
 © 2001 FORD MOTOR COMPANY
 DEARBORN, MICHIGAN 48121
 6581

2. **WARNING: MAKE SURE YOU TURN THE KNOB ON THE SPECIAL TOOL SLOWLY IN THIS STEP. FAILURE TO DO SO MAY RESULT IN A FAULTY BUCKLE PASSING INSPECTION.**

NOTE: When the gauge tongue is near the end of its travel, the buckle is likely to make a "click" sound. Do not stop turning the knob at this point. Disregard the click and continue to turn the knob until it bottoms out.



While holding the special tool in place, turn the knob on the special tool until it bottoms out. If resistance is felt while turning the knob on the special tool, it may require lubrication. Lubricate the threads on the knob shaft with Lubri-Plate® (130-AA) white grease or similar white lithium grease. See Figure 2.

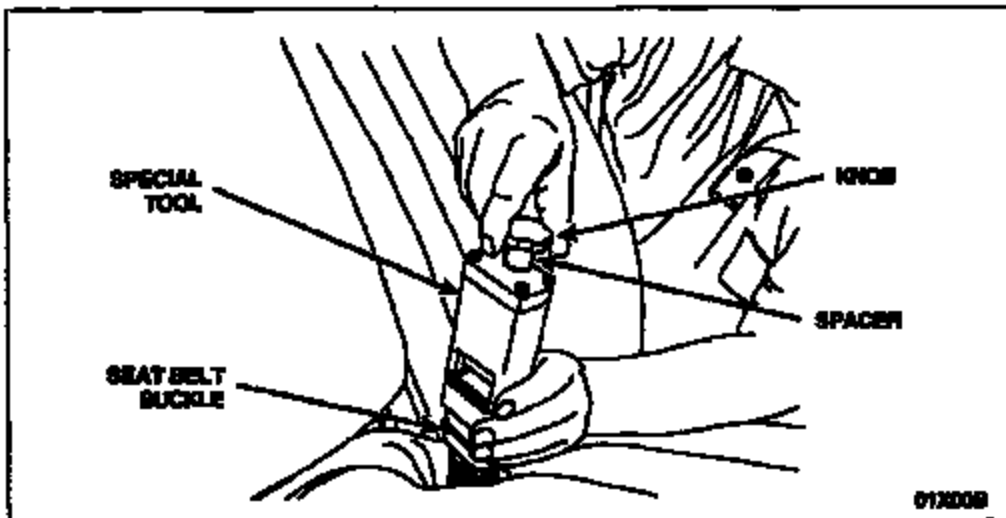


FIGURE 2

3. Pull on the body of the special tool in an attempt to remove it from the belt buckle. Do this without pressing the red seat belt release button.
- If the special tool does not lock into place in the belt buckle, but instead disengages from the belt buckle, the belt buckle must be replaced. Refer to the Service Procedure section of this document for instruction.
 - If the special tool does lock into place in the belt buckle, the belt buckle does not need to be replaced.
4. Remove the special tool from the seat belt buckle and unscrew the knob completely. If the special tool is retained by the buckle, press the seat belt release button to release it. Repeat Steps 1-3 on the passenger side seat belt buckle.

Ford Motor Company

CPH © 2001 FORD MOTOR COMPANY
DEARBORN, MICHIGAN 48124
0901

SERVICE PROCEDURE

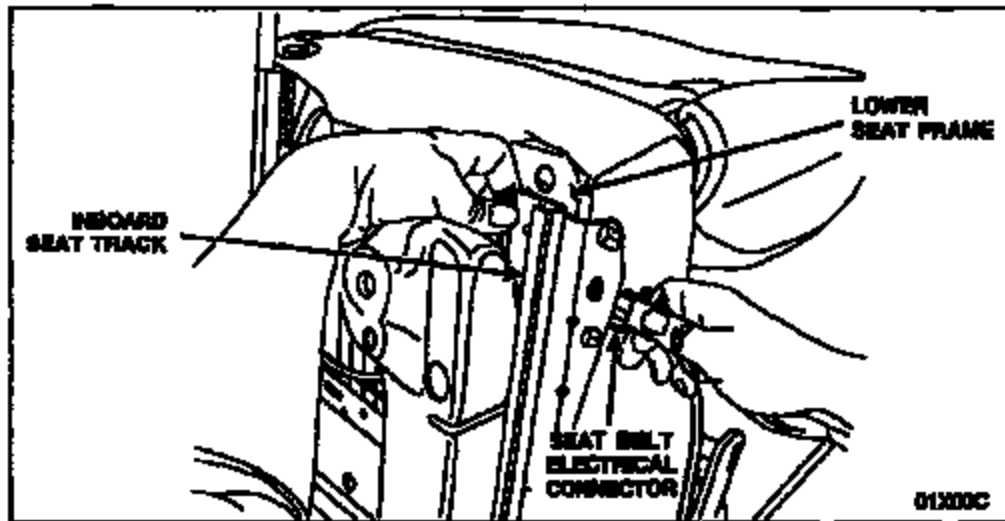
NOTE: All Workshop Manual references in this document are to the June 2001 CD version.

CROWN VICTORIA, GRAND MARQUIS AND TOWN CAR

1. Replace the affected front row seat belt buckle(s). Refer to the service procedure in Section 601-20A of the Crown Victoria, Grand Marquis and Town Car Workshop Manual.

EXCURSION AND F-SUPER DUTY (250, 350, 450 AND 550)

1. Replace the affected front row seat belt buckle(s). Refer to the service procedure in Section 601-20A of the Workshop Manual, with the following exceptions for manual 60/40 split bench and manual captain's chair:
 - A. On vehicles equipped with captain's chairs, the driver seat must be removed from the vehicle. Refer to the service procedure in Section 601-15 of the Excursion and F-Series Super Duty Workshop Manual.
 - B. The following steps must be performed to remove the driver seat belt buckle from the seat on captain's chairs and 40 percent seats of the 60/40 split bench seats.
 - Remove the rear mounting bolt from the inboard seat track.
 - Remove the buckle retaining nut.
 - Position the rear of the inboard seat track away from the seat frame for clearance to remove the electrical connector. See Figure 3.

**FIGURE 3**

- Remove the buckle and route the electrical connector through the side of the lower seat frame.
- For installation, reverse the steps above. Tighten the seat track bolt to 25 Nm (19 lb-ft) and the belt buckle nut to 40 Nm (30 lb-ft).

Ford Motor Company
 OPR © 2001 FORD MOTOR COMPANY
 DEARBORN, MICHIGAN 48121
 0801

EXPEDITION AND NAVIGATOR

1. Replace the affected front row seat belt buckle(s). Refer to the service procedures in Section 501-20A of the Expedition and Navigator Workshop Manual.

F-150

1. Replace the affected front row seat belt buckle(s). Refer to the service procedures in Section 501-20A of the F-150 Workshop Manual, with the following exceptions:
 - For vehicles with 60/40 split bench seats equipped with Seat Integrated Restraint (SIR) systems: during seat belt buckle removal, the 60 percent seat cushion does not have to be removed to access the seat belt buckle bolt.
 - For vehicles equipped with SIR: during seat removal, position the seat forward to access the fifth foot trim cover fastener.

RANGER

1. Replace the affected front row seat belt buckle(s). Refer to the service procedures in Section 501-20A of the Ranger Workshop Manual, with the following exceptions:
 - Remove both center seat belt bolts and leave the belts attached to the seat during removal.
 - During seat installation, it is not necessary to route the center seat belts through the locking strap since they are still attached to the seat. Tighten both bolts to 40 Nm (30 lb-ft).

WINDSTAR

1. Replace the affected front row seat belt buckle(s). Refer to the service procedures in Section 501-20A of the Windstar Workshop Manual.

*Ford Motor Company*ONE FORD MOTOR COMPANY
DEARBORN, MICHIGAN 48121
0801

SEAT BELT BUCKLE INSPECTION AND/OR REPLACEMENT PROCEDURE

AFFECTED VEHICLES: CERTAIN 2001 MODEL YEAR CROWN VICTORIA, EXCURSION, EXPEDITION, F-150, F-SUPER DUTY, GRAND MARQUE, NAVIGATOR, RANGER, TOWN CAR AND WINDSTAR

OVERVIEW

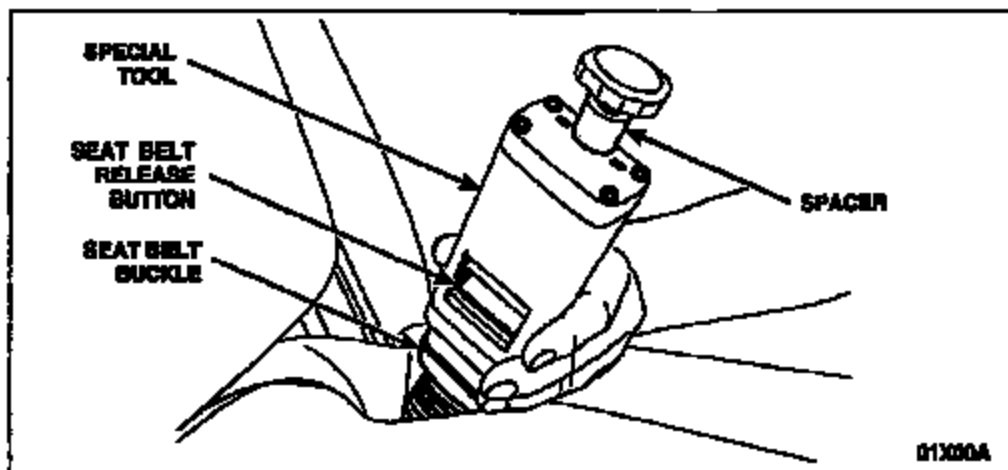
Less than 2% of the affected vehicles are expected to need seat belt buckle replacement. This document contains the necessary information for inspecting and, if necessary, replacing the driver and/or passenger seat belt buckle assembly(s) on the affected vehicles. Center seat belt buckles are not affected. A special tool has been developed to identify faulty buckles and make sure the inspection of the buckle mechanism is consistent each time it is performed. Although the special tool has been developed to identify 100% of the potentially faulty buckles, it can identify good buckles as faulty. This is an acceptable issue. If the tool identifies any buckles as faulty, it must be replaced. This document also contains amendments to the Workshop Manual sections relating to buckle replacement. Be sure to read this document before attempting to replace the seat belt buckles.

INSPECTION

⚠ WARNING: FAILURE TO USE THE SPECIAL TOOL AS INSTRUCTED IN THIS INSPECTION CAN ALLOW A FAULTY BUCKLE TO PASS THE INSPECTION. MAKE SURE TO USE THE TOOL EXACTLY AS INSTRUCTED IN THE INSPECTION PROCEDURE.

1. **NOTE:** Make sure that the knob on the special tool is fully extended (unscrewed) before installing it on the buckle.

⚠ Press and release the red seat belt release button located on the driver side seat belt buckle. Then, install the special tool onto the driver side seat belt buckle and hold it in place. See Figure 1.

**FIGURE 1**

Ford Motor Company
© 2001 FORD MOTOR COMPANY
DEARBORN, MICHIGAN 48121
D601

2. **WARNING: MAKE SURE YOU TURN THE KNOB ON THE SPECIAL TOOL SLOWLY IN THIS STEP. FAILURE TO DO SO MAY RESULT IN A FAULTY BUCKLE PASSING INSPECTION.**

NOTE: When the gauge tongue is near the end of its travel, the buckle is likely to make a "click" sound. Do not stop turning the knob at this point. Disregard the click and continue to turn the knob until it bottoms out.



While holding the special tool in place, turn the knob on the special tool until it bottoms out. If resistance is felt while turning the knob on the special tool, it may require lubrication. Lubricate the threads on the knob shaft with Lubri-Plate® (130-AA) white grease or similar white lithium grease. See Figure 2.

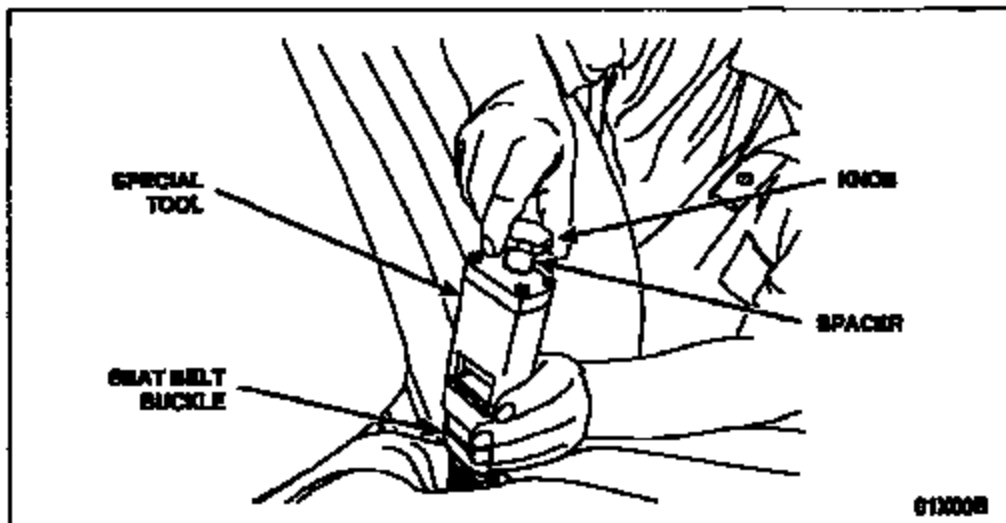


FIGURE 2

3. Pull on the body of the special tool in an attempt to remove it from the belt buckle. Do this without pressing the red seat belt release button.
- If the special tool does not lock into place in the belt buckle, but instead disengages from the belt buckle, the belt buckle must be replaced. Refer to the Service Procedure section of this document for instruction.
 - If the special tool does lock into place in the belt buckle, the belt buckle does not need to be replaced.
4. Remove the special tool from the seat belt buckle and unscrew the knob completely. If the special tool is retained by the buckle, press the seat belt release button to release it. Repeat Steps 1-3 on the passenger side seat belt buckle.

Ford Motor Company
 © 2001 FORD MOTOR COMPANY
 DEARBORN, MICHIGAN 48116
 UAW

SERVICE PROCEDURE

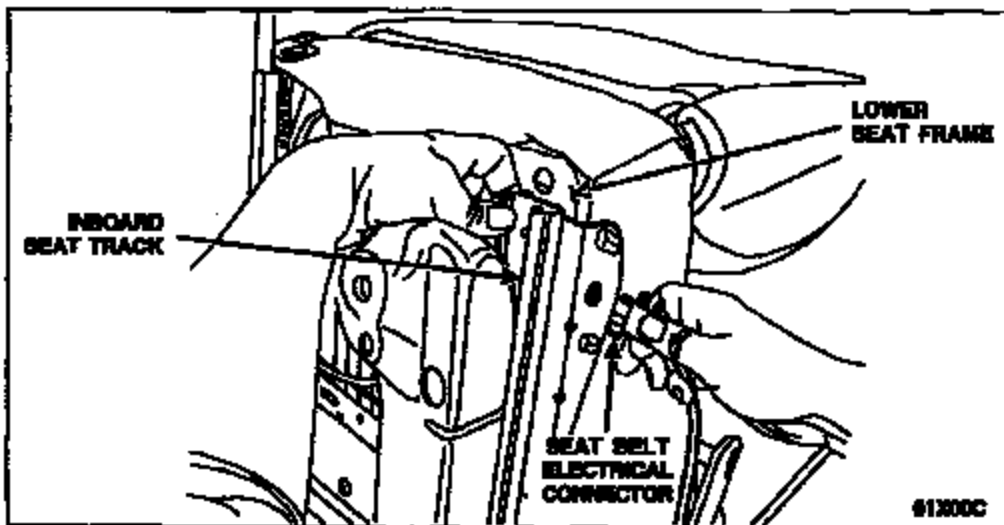
NOTE: All Workshop Manual references in this document are to the June 2001 CD version.

CROWN VICTORIA, GRAND MARQUEE AND TOWN CAR

1. Replace the affected front row seat belt buckle(s). Refer to the service procedure in Section 501-20A of the Crown Victoria, Grand Marquee and Town Car Workshop Manual.

EXCURSION AND F-SUPER DUTY (250, 350, 450 AND 550)

1. Replace the affected front row seat belt buckle(s). Refer to the service procedure in Section 501-20A of the Workshop Manual, with the following exceptions for manual 60/40 split bench and manual captain's chair:
 - A. On vehicles equipped with captain's chairs, the driver seat must be removed from the vehicle. Refer to the service procedure in Section 501-10 of the Excursion and F-Series Super Duty Workshop Manual.
 - B. The following steps must be performed to remove the driver seat belt buckle from the seat on captain's chairs and 40 percent seats of the 60/40 split bench seats.
 - Remove the rear mounting bolt from the inboard seat track.
 - Remove the buckle retaining nut.
 - Position the rear of the inboard seat track away from the seat frame for clearance to remove the electrical connector. See Figure 3.

**FIGURE 3**

- Remove the buckle and route the electrical connector through the side of the lower seat frame.
- For installation, reverse the steps above. Tighten the seat track bolt to 25 Nm (19 lb-ft) and the belt buckle nut to 40 Nm (30 lb-ft).

Ford Motor Company

CPH © 2001 FORD MOTOR COMPANY
DIAURBOPN, MCH-05AN 4121
06/01

EXPEDITION AND NAVIGATOR

1. Replace the affected front row seat belt buckle(s). Refer to the service procedures in Section 501-20A of the Expedition and Navigator Workshop Manual.

F-150

1. Replace the affected front row seat belt buckle(s). Refer to the service procedures in Section 501-20A of the F-150 Workshop Manual, with the following exceptions:
 - For vehicles with 60/40 split bench seats equipped with Seat Integrated Restraint (SIR) systems: during seat belt buckle removal, the 60 percent seat cushion does not have to be removed to access the seat belt buckle bolt.
 - For vehicles equipped with SIR: during seat removal, position the seat forward to access the fifth foot trim cover fastener.

RANGER

1. Replace the affected front row seat belt buckle(s). Refer to the service procedures in Section 501-20A of the Ranger Workshop Manual, with the following exceptions:
 - Remove both center seat belt bolts and leave the belts attached to the seat during removal.
 - During seat installation, it is not necessary to route the center seat belts through the locating strap since they are still attached to the seat. Tighten both bolts to 40 Nm (30 lb-ft).

WINDSTAR

1. Replace the affected front row seat belt buckle(s). Refer to the service procedures in Section 501-20A of the Windstar Workshop Manual.

Ford Motor Company
© 2001 FORD MOTOR COMPANY
DEARBORN, MI 48124-1001

JUN 05 2002 12:43 PM WIXOM

208 3485374 TO 53243

P. 01/02

TO

SANDIP PATEL

FROM

CARL RUTKOWSKIE
WIXOM ASSY. IQ
45369

BLZ 10879

R004-011 10400

TRW SEAT BELT TRAINING MATRIX FOR DEFECTIVE BUCKLE ISSUE

NAME	SOCP	1	2	3	4	5	6	7	8	9	10	%
[REDACTED]		0	0	0	0	0	0	0	0	0	0	0%
		0	0	0	0	0	0	0	0	0	0	0%
		0	0	0	0	0	0	0	0	0	0	0%
		0	0	0	0	0	0	0	0	0	0	0%
		0	0	0	0	0	0	0	0	0	0	0%
		0	0	0	0	0	0	0	0	0	0	0%
		0	0	0	0	0	0	0	0	0	0	0%
		0	0	0	0	0	0	0	0	0	0	0%
		0	0	0	0	0	0	0	0	0	0	0%
		0	0	0	0	0	0	0	0	0	0	0%
		0	0	0	0	0	0	0	0	0	0	0%
		0	0	0	0	0	0	0	0	0	0	0%

The operators, shown, have been fully certified in the TRW buckle testing procedure

TRW Representative: G. Dorsey *G. Dorsey*
Wilson I.G. engineer: T. Burdick *T. Burdick*

BUZ 10000

CONFIDENTIAL

SEATBELT TEST PROCEDURE FOR L/H AND R/H FRONT SEATS

- 1.) Obtain a certified TRW min/max tongue gage.
- 2.) Note the red button on the buckle, it should be sitting slightly above the black housing.
- 3.) SLOWLY insert the tongue into the buckle and try to seat it all the way.
- 4.) If the red button does not spring back to its original position, the tongue may be removed by wiggling the tongue back and forth (side to side) while trying to back the tongue out. If the tongue DOES back out, OR if the red button does not return to the original position, It is a DEFECTIVE buckle assembly.
- 5.) If the Red button does return to the original position, the tongue SHOULD NOT be able to back out using the above procedure.
- 6.) Repeat the test five times on each front seat seatbelt buckle.

NOTE: The certified gage must be inserted SLOWLY, it is possible to "trick" the buckle and ship a potentially defective seatbelt if the tongue is inserted to quickly.

BUZ 18779

RQ64-011 10385

From: Zychowicz, Julie (J.A.)
Sent: Monday, June 24, 2002 12:30 PM
To: Clement, Charles (C.A.); robert.ellis@trw.com; bill.forbes@trw.com
Cc: Jack Phillion; Jim McGowan; Jose Dorado; Robert Ellis
Subject: RE: Action Items on Buckle

Rob or Bill,

Can you tell me what the CPk data is on the ferrule staking vs spin riveting, for all lines shown. Line 345 seems to have a large amount of variance, compared to the other lines, for spin riveting. Don't see how this data shows any improvement from staking to spin riveting.

-----Original Message-----

From: Clement, Charles (C.A.)
Sent: Friday, June 21, 2002 4:19 PM
To: 'Robert Ellis; Bill Forbes'
Cc: Jack Phillion; Jim McGowan; Jose Dorado; Robert Ellis; Zychowicz, Julie (J.A.)
Subject: FW: Action Items on Buckle

Bill, in review of the data provided I would like TRW to tear down all the No problem found, Can't Duplicate, retractors as a part of this exploratory investigation. Since specifically the assessment of the noted conditions has yet to be determined. The exploratory investigation should not exclude the 41 or so NPF and CD's. Please advise....

-----Original Message-----

From: Bill Forbes [mailto:Bill.Forbes@trw.com]
Sent: Friday, June 21, 2002 3:09 PM
To: cclement@ford.com; jzychow@ford.com
Cc: Jack Phillion; Jim McGowan; Jose Dorado; Robert Ellis
Subject: Action Items on Buckle

Julie and Charles,
Attached are:

1. Reynosa warranty analysis report for 02 YTS
2. Action Plan
3. Retention data for spin rivet vs. old axial rivet

We will update status on all actions on Monday's 3pm meeting. If acceptable, we would like to conference in. Let me know if you feel representation at Dearborn is needed. Also let me know if we have missed any actions.

Of the three additional buckles returned today, one was part of the first four reviewed with Julie and Jim Downs yesterday. One was built in week 2 of '01 and fails the gauge (Rob will do an analysis on this one). The other was similar to the first four and was built in week 33.

Bill Forbes
TRM OSS Product Assurance Manager
(586) 781-8085 Phone
(586) 781-8010 Fax

[REDACTED]

From: Lovelace, Maria (M.E.)
Sent: Thursday, September 18, 2002 10:46 AM
To: Zychowicz, Julie (J.A.)
CC: Oswald, Greg (G.G.)
Subject: FW: VEHICLES

Julie,
this is the balance of the Ford Motor owned vehicles on the list. I have one seat belt buckle coming back and that is for SUB85734. That unit is going to be crushed next week and we have an order in to remove the buckle before that happens.

-----Original Message-----
From: Blum, Sherry (S.L.)
Sent: Thursday, September 19, 2002 10:39 AM
To: Lovelace, Maria (M.E.)
Subject: RE: VEHICLES

4816 total theft - unrecovered
2882 total theft - unrecovered
4140 sold @ auction 1998
2529 flood - donate 1998 (this vehicle to school and tech shop and is not to be driven)
0931 total theft - unrecovered
8858 sold @ auction 1995
8119 sold @ auction 2001
6702 flood - donate 1985 (this vehicle to school or tech shop and is not to be driven)

-----Original Message-----
From: Lovelace, Maria (M.E.)
Sent: Thursday, September 19, 2002 10:01 AM
To: Blum, Sherry (S.L.)
Subject: VEHICLES

Sherry,
below are the vehicles that I am trying to track. Thank you for your time and help.

1FMDU82X03N	[REDACTED]	AMERICAN ROAD INS	4 PARKLANE BLVD
1FMDU84D38L	[REDACTED]	AMERICAN ROAD INS	4 PARKLANE BLVD
1FMDU82X03L	[REDACTED]	AMERICAN ROAD INS CO	4 PARKLANE BLVD STE 480
1FMDU84D03L	[REDACTED]	AMERICAN ROAD INS CO	
1FMDU84X48L	[REDACTED]	AMERICAN ROAD INS CO	4 PARKLANE BLVD STE 480
1FMDU84X782	[REDACTED]	AMERICAN ROAD INS CO	
1FMDU82X18L	[REDACTED]	AMERICAN ROAD INS CO	4 PARKLANE BLVD STE 480
1FMDU84X832	[REDACTED]	AMERICAN ROAD SER	4 PARKLANE BLVD

María E. Lovelace - FQE Liaison
Enhanced Concern Identification - FCSD
500 Town Center, Suite 300 Cube 25
500 Town Center Drive
Dearborn, Michigan 48126
313-323-6561/800-621-4450

From: Robert Ellis [Robert.Ellis@trw.com]
Sent: Monday, July 29, 2002 8:31 AM
To: jzychowi@ford.com
Subject: Updated Warranty Analysis.



ANALYSIS
WARY AS OF ISRL

Here it is

R. Ellis
Product Performance Manager
ph: (586) 784-7664
fax: (586) 781-7179
robert.ellis@trw.com

ANALYSIS SUMMARY AS OF 18JL02

TOTAL RETURNS THRU WARRANTY / FORD

1185 - Pre Wk 23 = 828

- Post Wk 23 = 240

- N.T.F. = 157*
- Contamination = 45
- Damaged = 28
- Reproduce w/bias = 12*

Total returns correlating to verbatims won't latch, unlatches/releases, won't stay latched and unlatches while driving.

74 - Pre Wk 23 = 35

- Post Wk 23 = 38

- N.T.F. = 18*
- Contamination = 18
- Reproduce w/bias = 3*

Only 12 of 240 can be made to reproduce condition by **blowing**** tongue into pushbutton and inserting slowly.

*All samples pass dealer gage.

**Blowing = intentionally applying constant outboard force to tongue, during entire insertion distance, causing severe interference and dragging between tongue and pushbutton. Blowing in this manner is not indicative of vehicle operator action.

RECOMMENDATION

Based on analysis data suggesting a minimal number of warranty samples exhibiting condition when checked with extreme manual biasing of tongue, it is recommended that this concern be closed from Ford CCRG with the following on-going actions:

1. Continue to closely monitor in-coming warranty samples to ensure existing trend continues. Review data with Ford weekly.
2. Perform deep-dive evaluation of vehicle geometry to better understand variation in warranty between various vehicle lines and trim packages.

From: Robert Ellis [Robert.Ellis@trw.com]
Sent: Thursday, October 10, 2002 1:40 PM
To: jzychowi@ford.com; Wilkins@ford.com
Subject: Fwd: Ford Type 1 Buckle - Life Cycles



Ford Type 1 Buckle
- Life Cycles

Hi Julie

Please find attached the specifics of sample #5 and photos. The coins are added to give some perspective as to the gap between the cover and the pushbutton. I have not been able to find the status of the hardness test yet, but I will forward you an E-mail as soon as I have details.

Regards

R. Ellis
Product Performance Manager
ph: (586) 786-7604
fax: (586) 781-7279
robert.ellis@trw.com





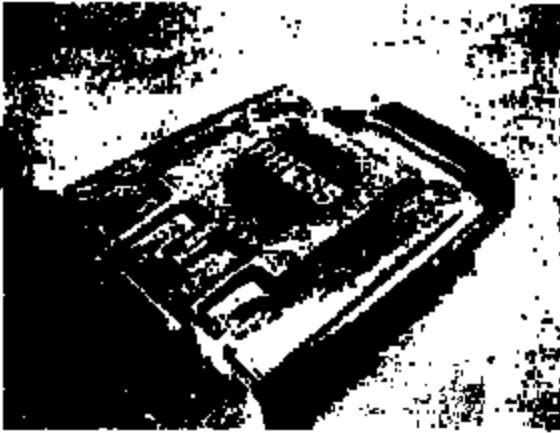


RQ04-011 10225

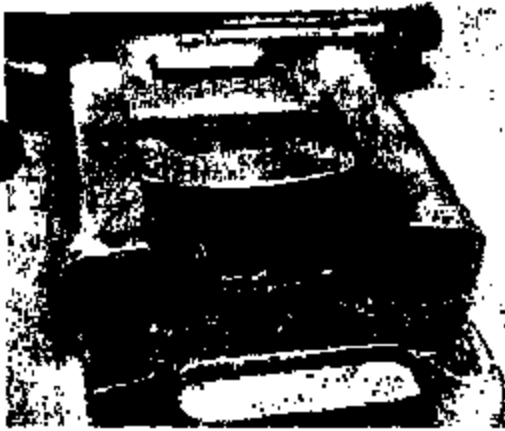




RQ04-011 10227







RQ04-011 10230





RQ04-011 10232



RQ04-011 10233







From: Clement, Charles (C.A.)
Sent: Thursday, October 10, 2002 2:33 PM
To: Wilkins, Linda (L.A.); Zychowitz, Julie (J.A.)
Subject: FW: Ford Type 1 Buckle - Life Cycles

      
MVC-001X.JPG (79 KB) MVC-002X.JPG (81 KB) MVC-003X.JPG (82 KB) MVC-004X.JPG (135 KB) MVC-005X.JPG (114 KB) MVC-006X.JPG (123 KB) MVC-007X.JPG (121 KB)
      
MVC-008X.JPG (127 KB) MVC-009X.JPG (93 KB) MVC-010X.JPG (185 KB) MVC-011X.JPG (110 KB) MVC-012X.JPG (116 KB) MVC-1535.JPG (38 KB) MVC-1545.JPG (39 KB)

Linda

. do we still want to meet Monday to discuss, with TRW. Please advise....

Charles A. Clement
Safety - Seats and Restraints
Campaign Prevent Specialist - Occupant Movement
Tough Truck
Phone: 313-390-5150
Pager: 313-851-0674 (Please do not use)

-----Original Message-----

From: Robert Ellis [mailto:Robert.Ellis@trw.com]
Sent: Thursday, October 10, 2002 1:49 PM
To: cclement@FORD.COM; jzychowis@FORD.COM; lwilkins@FORD.COM
Subject: Fwd: Ford Type 1 Buckle - Life Cycles

Hi Julie

Please find attached the specifics of sample #5 and photos. The coins are added to give some perspective as to the gap between the cover and the pushbutton. I have not been able to find the status of the hardness test yet, but I will forward you an E-mail as soon as I have details.

Regards

R.Ellis
Product Performance Manager
ph: (586) 786-7604
fax: (586) 781-7279
robert.ellis@trw.com

Date: Wed, 09 Oct 2002 16:42:09 -0400
From: "Angelberto Vela" <Angelberto.Vela@trw.com>
To: "Brian Tally" <Brian.Tally@trw.com>,
"Jose Sanchez" <Jose.Sanchez@trw.com>,
"Robert Ellis" <Robert.Ellis@trw.com>
Subject: Ford Type 1 Buckle - Life Cycles

Attache are some photos of sample # 5 of Ford Type 1 Buckle that had broken Latch Spring at 17,437 cycles.
The Latch Spring Lot on this buckle is R060.







Microgram Test Report
 88 2004, W. Of Texas

DATE / TIME
 04 / 26 / 05 11:12
 INVT./TEMP.
 LOCATION:

TU May 26 05 11:12
 04 LOW TEMP
 FRONT HORN IMPACT

CLIENT:
 REPORT NO.
 SAMPLE:

DOT/MTSA
 26425-009
 BELL SPRINT 52.5

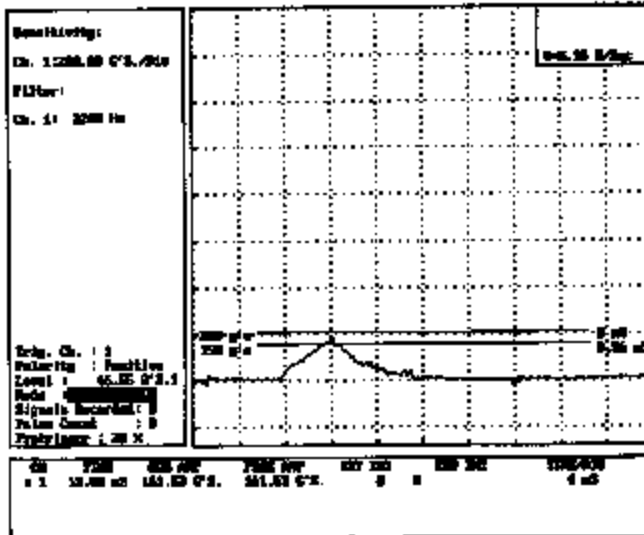
Microgram Test Report
 88 2004, W. Of Texas

DATE / TIME
 04 / 26 / 05 11:19
 INVT./TEMP.
 LOCATION:

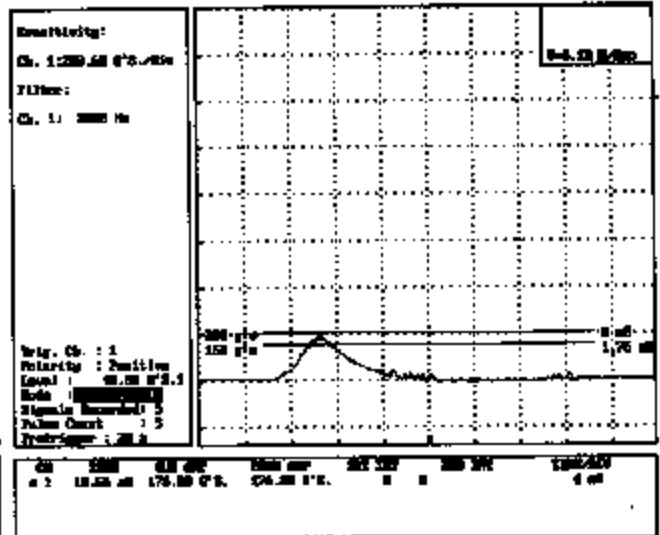
TU May 26 05 11:19
 02 AMBIENT
 FRONT HORN IMPACT

CLIENT:
 REPORT NO.
 SAMPLE:

DOT/MTSA
 26425-009
 BELL SPRINT 52.5



Remarks:



Remarks:

Microgram Test Report
 88 2004, W. Of Texas

DATE / TIME
 04 / 26 / 05 11:21
 INVT./TEMP.
 LOCATION:

TU May 26 05 11:21
 04 LOW TEMP
 FRONT HORN IMPACT

CLIENT:
 REPORT NO.
 SAMPLE:

DOT/MTSA
 26425-009
 BELL SPRINT 52.5

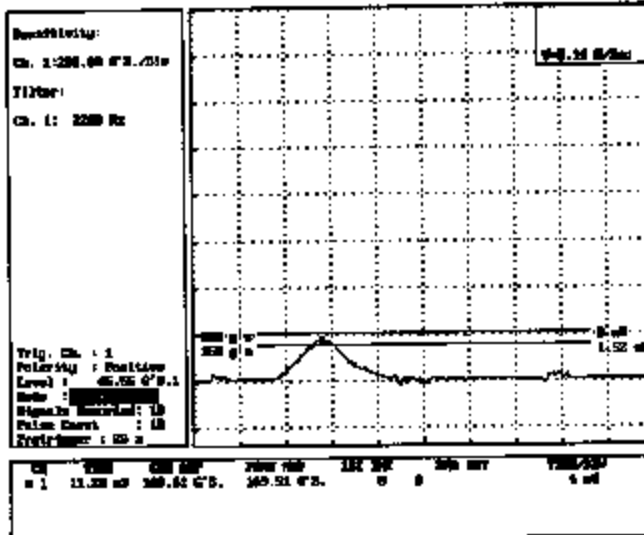
Microgram Test Report
 88 2004, W. Of Texas

DATE / TIME
 04 / 26 / 05 11:22
 INVT./TEMP.
 LOCATION:

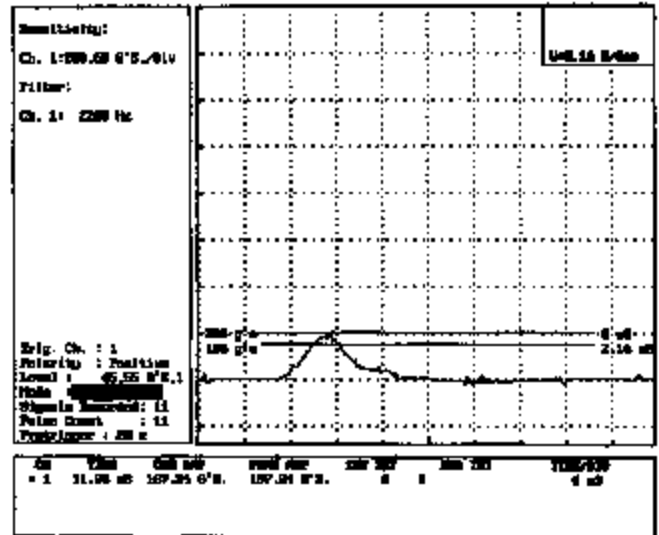
TU May 26 05 11:22
 04 LOW TEMP
 FRONT HORN IMPACT

CLIENT:
 REPORT NO.
 SAMPLE:

DOT/MTSA
 26425-009
 BELL SPRINT 52.5



Remarks:



Remarks:



RQ04-011 10212



RQ04-011 10213



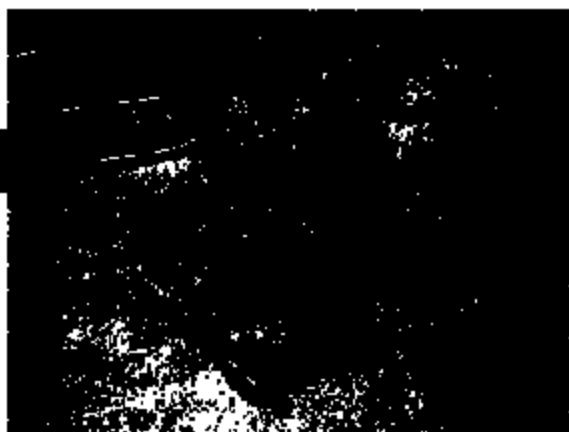
RQ04-011 10214

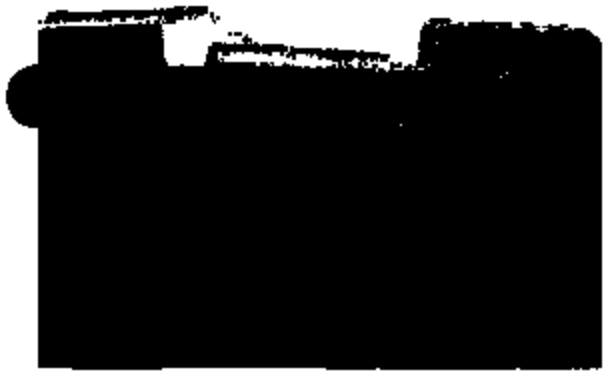


RQ04-011 10215



RQ04-011 10217







RQ04-011 10216





LD-678

INSPECTION
TIME



Crown Victoria/Grand Marquis

Bucket Seats (with or without power seats)

Inspect 0.1

Inspect and Replace One (1) Seat Belt Buckle 0.7

Inspect and Replace Two (2) Seat Belt Buckle 1.1

60/40 Split Bench Seat (with or without power seats)

Inspect 0.1

Inspect and Replace One (1) Seat Belt Buckle 0.6

Inspect and Replace Two (2) Seat Belt Buckle 1.0

Inspect and Replace Three (3) Seat Belt Buckle 1.0

Town Car

40/20/40 Split Bench Seat With Side Airbags

Inspect 0.1

Inspect and Replace One (1) Seat Belt Buckle 1.8

Inspect and Replace Two (2) Seat Belt Buckle 2.1

Inspect and Replace Three (3) Seat Belt Buckle 2.1

40/20/48 Split Bench Seat Without Side Airbags

Inspect 0.1

Inspect and Replace One (1) Seat Belt Buckle 0.6

Inspect and Replace Two (2) Seat Belt Buckle 1.0

Inspect and Replace Three (3) Seat Belt Buckle 1.0

Ranger

With Pre-Tensioners

REGULAR CAB/SUPER CAB

60/40 Split Bench Seat

Inspect 0.1

Inspect and Replace One (1) Seat Belt Buckle 1.2

Inspect and Replace Two (2) Seat Belt Buckle 1.6

Inspect and Replace Three (3) Seat Belt Buckle 1.6

Without Pre-Tensioners

60/40 Split Bench Seat

Inspect 0.1

Inspect and Replace One (1) Seat Belt Buckle 0.7

Inspect and Replace Two (2) Seat Belt Buckle 1.0

Inspect and Replace Three (3) Seat Belt Buckle 1.1

Expedition

Bucket Seats, With or Without Side Air Bags

Inspect 0.1

Inspect and Replace One (1) Seat Belt Buckle 0.8

Inspect and Replace Two (2) Seat Belt Buckle 0.9

60/40 Split Bench Seat (with or without power seats)

Inspect 0.1

Inspect and Replace One (1) Seat Belt Buckle 0.4

Inspect and Replace Two (2) Seat Belt Buckle 0.5

Inspect and Replace Three (3) Seat Belt Buckle 0.5

Navigator

Bucket Seats, With or Without Side Air Bags

Inspect 0.1

Inspect and Replace One (1) Seat Belt Buckle 0.8

Inspect and Replace Two (2) Seat Belt Buckle 0.9

F-150, Without SIR

Reg Cab

Bucket Seats (with or without power seats)

Inspect	0.1
Inspect and Replace One (1) Seat Belt Buckle	0.6
Inspect and Replace Two (2) Seat Belt Buckle	0.7

60/40 Split Bench Seat (with or without power seats)

Inspect	0.1
Inspect and Replace One (1) Seat Belt Buckle	0.7
Inspect and Replace Two (2) Seat Belt Buckle	0.9
Inspect and Replace Three (3) Seat Belt Buckle	0.9

Full Bench Seat (with or without power seats)

Inspect	0.1
Inspect and Replace One (1) Seat Belt Buckle	0.5
Inspect and Replace Two (2) Seat Belt Buckle	0.6
Inspect and Replace Three (3) Seat Belt Buckle	0.6

Super Cab

Bucket Seats (with or without power seats)

Inspect	0.1
Inspect and Replace One (1) Seat Belt Buckle	0.6
Inspect and Replace Two (2) Seat Belt Buckle	0.7

60/40 Split Bench Seat (with or without power seats)

Inspect	0.1
Inspect and Replace One (1) Seat Belt Buckle	0.7
Inspect and Replace Two (2) Seat Belt Buckle	0.9
Inspect and Replace Three (3) Seat Belt Buckle	0.9

Full Bench Seat (with or without power seats)

Inspect	0.1
Inspect and Replace One (1) Seat Belt Buckle	0.5
Inspect and Replace Two (2) Seat Belt Buckle	0.5
Inspect and Replace Three (3) Seat Belt Buckle	0.6

Super Crew

Bucket Seats (with or without power seats)

Inspect	0.1
Inspect and Replace One (1) Seat Belt Buckle	0.6
Inspect and Replace Two (2) Seat Belt Buckle	0.7

60/40 Split Bench Seat (with or without power seats)

Inspect	0.1
Inspect and Replace One (1) Seat Belt Buckle	0.7
Inspect and Replace Two (2) Seat Belt Buckle	0.9
Inspect and Replace Three (3) Seat Belt Buckle	0.9

Full Bench Seat (with or without power seats)

Inspect	0.1
Inspect and Replace One (1) Seat Belt Buckle	0.6
Inspect and Replace Two (2) Seat Belt Buckle	0.5
Inspect and Replace Three (3) Seat Belt Buckle	0.6

F-150 With SIR and Pre-Tensioners	
Super Cab	
Bucket Seats (with or without power seats)	
Inspect	0.1
Inspect and Replace One (1) Seat Belt Buckle	1.0
Inspect and Replace Two (2) Seat Belt Buckle	1.4
60/40 Split Bench Seat (with or without power seats)	
Inspect	0.1
Inspect and Replace One (1) Seat Belt Buckle	1.1
Inspect and Replace Two (2) Seat Belt Buckle	1.4
Inspect and Replace Three (3) Seat Belt Buckle	1.4
Excursion	
Bucket Seats (with or without power seats)	
Inspect	0.1
Inspect and Replace One (1) Seat Belt Buckle	0.6
Inspect and Replace Two (2) Seat Belt Buckle	0.7
40/20/40 Split Bench Seat	
Inspect	0.1
Inspect and Replace One (1) Seat Belt Buckle	0.6
Inspect and Replace Two (2) Seat Belt Buckle	0.9
Inspect and Replace Three (3) Seat Belt Buckle	1.0
Super Duty With SIR	
Super Cab	
Bucket Seats (with or without power seats)	
Inspect	0.1
Inspect and Replace One (1) Seat Belt Buckle	0.9
Inspect and Replace Two (2) Seat Belt Buckle	1.0
40/20/40 Split Bench Seat (with or without power seats)	
Inspect	0.1
Inspect and Replace One (1) Seat Belt Buckle	1.0
Inspect and Replace Two (2) Seat Belt Buckle	1.4
Inspect and Replace Three (3) Seat Belt Buckle	1.4
Super Duty With Out SIR	
Reg Cab	
Bucket Seats (with or without power seats)	
Inspect	0.1
Inspect and Replace One (1) Seat Belt Buckle	0.6
Inspect and Replace Two (2) Seat Belt Buckle	0.7
60/40 Split Bench Seat (with or without power seats)	
Inspect	0.1
Inspect and Replace One (1) Seat Belt Buckle	0.6
Inspect and Replace Two (2) Seat Belt Buckle	0.9
Inspect and Replace Three (3) Seat Belt Buckle	1.0
Full Bench Seat	
Inspect	0.1
Inspect and Replace One (1) Seat Belt Buckle	0.5
Inspect and Replace Two (2) Seat Belt Buckle	0.5
Inspect and Replace Three (3) Seat Belt Buckle	0.6