

RQ04-011

FORD

APRIL 26, 2005

REQUEST 8

PART 1 OF 6

BOOK 3 OF 43

| | | |
|---------------------|---|-------------------------|
| TECH_TXT1 | BUCKLE REPLACE | SEATBELT ASSEMBLY FRONT |
| TECH_TXT2 | | |
| CUST_TXT | CUST STATES RT FRONT SEAT BELT WILL NOT STAY LATCHED COMES LOOSE | |
| AREA_CD | 619 | |
| COUNTRY_CD | USA | |
| SLS_DLR_CD | 171078 | |
| TXN_CD | 1 | |
| CNTRY_SOLD | USA | |
| QRT_CD | C21 | |
| VFG_CD | V05 | |
| AWS_VL_CD | B3 | |
| VRT_CD | S05 | |
| TIS_FLAG | | |
| VIN_CD | 1FMRU15L41L | |
| LBR_COST | | |
| VEH_LINE_CD | T/E3 | |
| MKT_DERIVED | * | |
| BOD_CAR_STL | TWO | |
| VER_SERIES_C | T/EF | |
| DRIVE_CD | T/B | |
| ENG_CD | T/VZ | |

| | |
|--------------|--------------------|
| ID | 35 |
| MDL_YR | 2001 |
| SORT_INDEX | 238 |
| TRANS_CD | T/DE |
| PLANT_CD | AP |
| PRODN_DT | 5/1/2001 |
| WRTY_START_D | 9/29/2001 |
| NAME | SUNSET AUTO CO INC |
| DOC_NUM | 25857801 |
| PH_NUM | 8434431 |
| WCC_CD | 6R02 |
| PART_NUM_CA | 1L7Z |
| PART_NUM_CA | 7881202 |
| PART_NUM_CA | AAA |
| CUST_CONC_C | 840 |
| COND_CD | 42 |
| RPR_DT | 10/11/2001 |
| TIS_WSD | 1 |
| CLM_KEY | 5015805 |
| MILGE | 12 |
| MTRL_COST | |
| TOT_COST_GRO | |
| LBR_HRS | |
| DLR_CD | 4198 |
| DLR_SUB_CD | |
| REGION_CD | NA |
| ST_PROV_CD | MO |
| Field27 | |
| CPSC_CD_6 | 12001 |

| | |
|---------------------|---|
| TECH_TXT1 | REPLACED BOTH FRONT SEAT BELT BUCKLES |
| TECH_TXT2 | |
| CUST_TXT | CUSTOMER STATES SEAT BELT BUCKLES WILL NOT HOLD |
| AREA_CD | 314 |
| COUNTRY_CD | USA |
| SLS_DLR_CD | 159052 |
| TXN_CD | 2 |
| CNTRY_SOLD | USA |
| QRT_CD | Q21 |
| VFG_CD | V05 |
| AWS_VL_CD | B3 |
| VRT_CD | S08 |
| TIS_FLAG | |
| VIN_CD | 1FMPU18LX1L |
| LBR_COST | |
| VEH_LINE_CD | T/B3 |
| MKT_DERIVED | * |
| BOD_CAB_STL | TVA |
| VER_SERIES_C | T/EF |
| DRIVE_CD | T/E |
| ENG_CD | T/NZ |

| | |
|---------------------|--------------------|
| ID | 38 |
| MDL_YR | 2001 |
| SORT_INDEX | 240 |
| TRANS_CD | TIDE |
| PLANT_CD | AP |
| PRODN_DT | 4/26/2001 |
| WRTY_START_D | 10/10/2001 |
| NAME | SUNSET AUTO CO INC |
| DOC_NUM | 25484001 |
| PH_NUM | 8434431 |
| WCC_CD | 6R02 |
| PART_NUM_CA | 1L7Z |
| PART_NUM_CA | 7961202 |
| PART_NUM_CA | AAA |
| CUST_CONC_C | S40 |
| COND_CD | 42 |
| RPR_DT | 9/20/2001 |
| TIS_WSD | 0 |
| CLM_KEY | 4263961 |
| MILGE | 12 |
| MTRL_COST | |
| TOT_COST_GRO | |
| LBR_HRS | |
| DLR_CD | B188 |
| DLR_SUB_CD | |
| REGION_CD | NA |
| ST_PROV_CD | MO |
| Field27 | a |
| CPSC_CD_6 | 12001 |

| | |
|---------------------|------------------------------|
| TECH_TXT1 | REPLACED BOTH SEATBELTS |
| TECH_TXT2 | |
| CUST_TXT | SEAT BELT WILL NOT HOLD BACK |
| AREA_CD | 314 |
| COUNTRY_CD | USA |
| SLS_DLR_CD | 153184 |
| TXN_CD | 2 |
| CNTRY_SOLD | USA |
| QRT_CD | Q21 |
| VFG_CD | V05 |
| AWS_VL_CD | B3 |
| VRT_CD | S08 |
| TIS_FLAG | |
| VIN_CD | 1FMPU18LX1 [REDACTED] |
| LBR_COST | [REDACTED] |
| VEH_LINE_CD | T/B3 |
| MKT_DERIVED | * |
| BOD_CAB_STL | T/A |
| VER_SERIES_C | T/EF |
| DRIVE_CD | T/E |
| ENG_CD | T/VZ |

| | |
|---------------------|-----------------------|
| ID | 87 |
| MDL_YR | 2001 |
| SORT_INDEX | 245 |
| TRANS_CD | TIDE |
| PLANT_CD | AP |
| PRODN_DT | 5/10/2001 |
| WRTY_START_D | 8/31/2001 |
| NAME | JERRYS FORD SALES INC |
| DOC_NUM | 25005201 |
| PH_NUM | 250000 |
| WCC_CD | 6R02 |
| PART_NUM_CA | 1L7Z |
| PART_NUM_CA | 7081202 |
| PART_NUM_CA | AAB |
| CUST_CONC_C | 940 |
| COND_CD | 42 |
| RPR_DT | 4/23/2002 |
| TIS_WSD | 8 |
| CLM_KEY | 5182054 |
| MILGE | 5867 |
| MTRL_COST | |
| TOT_COST_GRO | |
| LBR_HRS | |
| DLR_CD | 135 |
| DLR_SUB_CD | |
| REGION_CD | NA |
| ST_PROV_CD | VA |
| Field27 | c |
| CPSC_CD_6 | 12001 |

| | |
|---------------------|--|
| TECH_TXT1 | DIAGNOSE AND REPLACE FRONT SEAT BELT BUCKLE, RETEST O.K. |
| TECH_TXT2 | |
| CUST_TXT | SEAT BELT BUCKLE INOP, SOP IN PASS FRONT SEAT BELT BUCKLE RELEASES BY ITSELF |
| AREA_CD | 703 |
| COUNTRY_CD | USA |
| SLS_DLR_CD | 127012 |
| TKN_CD | 1 |
| CNTRY_SOLD | USA |
| QRT_CD | Q21 |
| VFG_CD | Y05 |
| AWS_VL_CD | 83 |
| VRT_CD | 808 |
| TIS_FLAG | |
| VIN_CD | 1FMPU18L91L |
| LBR_COST | |
| VEH_LINE_CD | T/B3 |
| MKT_DERIVED | |
| BOD_CAB_STL | TNA |
| VER_SERIES_C | TEF |
| DRIVE_CD | T/E |
| ENG_CD | TNZ |

| | |
|---------------------|---------------------|
| ID | 38 |
| MDL_YR | 2001 |
| SORT_INDEX | 230 |
| TRANS_CD | TIDE |
| PLANT_CD | AP |
| PRODN_DT | 2/15/2001 |
| WRTY_START_D | 8/21/2001 |
| NAME | CRANDALL FORD, INC. |
| DOC_NUM | 3642001 |
| PH_NUM | 2883323 |
| WCC_CD | 6R02 |
| PART_NUM_CA | 1L7Z |
| PART_NUM_CA | 7881202 |
| PART_NUM_CA | AAB |
| CUST_CONG_C | 840 |
| COND_CD | 42 |
| RPR_DT | 2/2/2002 |
| TIS_WSD | 8 |
| CLM_KEY | 6852784 |
| MILGE | 0882 |
| MTRL_COST | |
| TOT_COST_GRO | |
| LBR_HRS | |
| DLR_CD | 2358 |
| DLR_SUB_CD | * |
| REGION_CD | NA |
| ST_PROV_CD | OH |
| Field27 | c |
| CPSC_CD_6 | 12001 |

Tuesday, December 14, 2004

Page 73 of 142

RQ04-011 E 1408

| | |
|---------------------|---|
| TECH_TXT1 | REPLACED BOTH FRT SEAT BELT BUCKLES CHECKED OPERATION OK |
| TECH_TXT2 | |
| CUST_TXT | DRIVERS SEATBELT COMES UNDONE REPLACE BOTH FRONT |
| AREA_CD | 218 |
| COUNTRY_CD | USA |
| SLS_DLR_CD | 144049 |
| TXN_CD | 1 |
| CNTRY_SOLD | USA |
| QRT_CD | Q21 |
| VFG_CD | V05 |
| AWS_VL_CD | B5 |
| VRT_CD | 808 |
| TIS_FLAG | |
| VIN_CD | 1FMPU16L31L |
| LBR_COST | |
| VEH_LINE_CD | TB3 |
| MKT_DERIVED | * |
| BOD_CAB_STL | TVA |
| VER_SERIES_C | TEF |
| DRIVE_CD | T/E |
| ENG_CD | TNZ |

| | |
|---------------------|--------------------|
| ID | 39 |
| MDL_YR | 2001 |
| SORT_INDEX | 200 |
| TRANS_CD | TYPE |
| PLANT_CD | AP |
| PRODN_DT | 4/20/2001 |
| WRTY_START_D | 6/28/2001 |
| NAME | BANKSTON L-M, INC. |
| DOC_NUM | 3623701 |
| PH_NUM | 2331441 |
| WCC_CD | BR02 |
| PART_NUM_CA | 1LZ |
| PART_NUM_CA | 7991202 |
| PART_NUM_CA | AAA |
| CUST_CONC_C | 525 |
| COND_CD | 41 |
| RPR_DT | 2/18/2002 |
| TIS_WSD | 8 |
| CLM_KEY | 6858178 |
| MILGE | 8837 |
| MTRL_COST | |
| TOT_COST_GRO | |
| LBR_HRS | |
| DLR_CD | 13568 |
| DLR_SUB_CD | * |
| REGION_CD | NA |
| ST_PROV_CD | TX |
| Field27 | b |
| CPSC_CD_6 | 12001 |

TECH_TXT1 CHECKED BOTH FRONT SEAT BELT OPP FOUND THAT
AT TIMES WHEN SEAT BELTS ARE PULLED HARD
BUCKLES WILL INT RELEASE

TECH_TXT2

| | |
|---------------------|---|
| CUST_TXT | FRONT SEAT BELTS WILL NOT STAY ATTACHED |
| AREA_CD | 872 |
| COUNTRY_CD | USA |
| SLS_DLR_CD | 152012 |
| TXN_CD | 2 |
| CNTRY_SOLD | USA |
| QRT_CD | Q21 |
| VFG_CD | V05 |
| AWS_VL_CD | B3 |
| VRT_CD | B05 |
| TIS_FLAG | |
| VIN_CD | 1FMPU18L01 |
| LBR_COST | |
| VEH_LINE_CD | T/B3 |
| MKT_DERIVED | * |
| BOD_CAB_STL | TVA |
| VER_SERIES_C | T/EF |
| DRIVE_CD | T/E |
| ENG_CD | TNZ |

| | |
|---------------------|--------------------------|
| ID | 40 |
| MDL_YR | 2001 |
| SORT_INDEX | 281 |
| TRANS_CD | T/DE |
| PLANT_CD | AP |
| PRODN_DT | 10/23/2000 |
| WRTY_START_D | 11/9/2000 |
| NAME | DON SANDERSON FORD, INC. |
| DOC_NUM | 88058101 |
| PH_NUM | 8428500 |
| WCC_CD | 6R02 |
| PART_NUM_CA | 1L7Z |
| PART_NUM_CA | 7861202 |
| PART_NUM_CA | BAA |
| CUST_CONC_C | 628 |
| COND_CD | |
| RPR_DT | 6/2/2002 |
| TIS_WSD | 18 |
| CLM_KEY | 8468798 |
| MILGE | 17148 |
| MTRL_COST | |
| TOT_COST_GRO | |
| LBR_HRS | |
| DLR_CD | 20301 |
| DLR_SUB_CD | |
| REGION_CD | NA |
| ST_PROV_CD | AZ |
| Field27 | b |
| CPSC_CD_6 | 11001 |

| | |
|---------------------|---|
| TECH_TXT1 | CHECK FOR CONCERN REPLACE DRIVERS SEAT BELT |
| TECH_TXT2 | |
| CUST_TXT | CUST STATES DRIVERS SEAT BELT BUCKLE RED KNOB WILL NOT COME ALL THE WAY OUT AT TIMES, AND THE SEAT BELT WILL NOT STAY IN BUCKLE |
| AREA_CD | 802 |
| COUNTRY_CD | USA |
| SLS_DLR_CD | 171171 |
| TXN_CD | EB4 |
| CNTRY_SOLD | USA |
| QRT_CD | Q21 |
| VFG_CD | V05 |
| AWS_VL_CD | B3 |
| VRI_CD | 808 |
| TIS_FLAG | Q |
| VIN_CD | 1FMPU18L51L |
| LBR_COST | |
| VEH_LINE_CD | T83 |
| MKT_DERIVED | |
| BOD_CAB_STL | TVA |
| VER_SERIES_C | TEF |
| DRIVE_CD | TE |
| ENG_CD | TN2 |

| | |
|---------------------|-----------------------|
| ID | 41 |
| MDL_YR | 2001 |
| SORT_INDEX | 288 |
| TRANS_CD | TIDE |
| PLANT_CD | AP |
| PRODN_DT | 6/18/2001 |
| WRTY_START_D | 6/28/2001 |
| NAME | PETERSON FORD-MERCURY |
| DOC_NUM | 685332 |
| PH_NUM | 8482828 |
| WCC_CD | BRD2 |
| PART_NUM_CA | 1LZ |
| PART_NUM_CA | 7881202 |
| PART_NUM_CA | BAB |
| CUST_CONC_C | S25 |
| COND_CD | 42 |
| RPR_DT | 7/20/2001 |
| TIS_WSD | 0 |
| CLM_KEY | 3597537 |
| MILGE | 4 |
| MTRL_COST | |
| TOT_COST_GRO | |
| LBR_HRS | |
| DLR_CD | 8281 |
| DLR_SUB_CD | |
| REGION_CD | NA |
| ST_PROV_CD | WI |
| Field27 | a |
| CPSC_CD_6 | 11001 |

| | |
|---------------------|---|
| TECH_TXT1 | REPLACED BOTH FRONT SEAT BELT BUCKLES THAT DO NOT HOLD. |
| TECH_TXT2 | |
| CUST_TXT | BOTH FRONT SEATBELT BUCKLES DONT HOLD |
| AREA_CD | 820 |
| COUNTRY_CD | USA |
| SLS_DLR_CD | 141837 |
| TXN_CD | 1 |
| CNTRY_SOLD | USA |
| QRT_CD | Q21 |
| VFG_CD | V05 |
| AWS_VL_CD | B3 |
| VRT_CD | 808 |
| TIS_FLAG | |
| VIN_CD | 1FMPU18L31L |
| LBR_COST | |
| VEH_LINE_CD | T/B3 |
| MKT_DERIVED | * |
| BOD_CAB_STL | TVA |
| VER_SERIES_C | TRE |
| DRIVE_CD | TRE |
| ENG_CD | TN2 |

| | |
|---------------------|---------------------|
| ID | 42 |
| MDL_YR | 2001 |
| SORT_INDEX | 288 |
| TRANS_CD | T/DX |
| PLANT_CD | AP |
| PRODN_DT | 12/20/2000 |
| WRTY_START_D | 8/20/2001 |
| NAME | LANDMARK FORD, INC. |
| DOC_NUM | 10780702 |
| PH_NUM | 8828200 |
| WCC_CD | 8R02 |
| PART_NUM_CA | 1L7Z |
| PART_NUM_CA | 7881202 |
| PART_NUM_CA | AAA |
| CUST_CONC_C | S28 |
| COND_CD | 41 |
| RPR_DT | 4/25/2002 |
| TIS_WSD | 8 |
| CLM_KEY | 8292820 |
| MILGE | 18074 |
| MTRL_COST | |
| TOT_COST_GRO | |
| LBR_HRS | |
| DLR_CD | 8007 |
| DLR_SUB_CD | |
| REGION_CD | NA |
| ST_PROV_CD | IL |
| Field27 | c |
| CPSC_CD_6 | 12001 |

| | |
|---------------------|--|
| TECH_TXT1 | REPLACE RT FRT BUCKLE INQP |
| TECH_TXT2 | |
| CUST_TXT | PSSGR FRT SEATBELT COMES UNLATCHED PARTS ORDERED ONE MONTH AGO |
| AREA_CD | 217 |
| COUNTRY_CD | USA |
| SLS_DLR_CD | 141105 |
| TXN_CD | EB4 |
| CNTRY_SOLD | USA |
| QRT_CD | Q21 |
| VFG_CD | V05 |
| AWS_VL_CD | B3 |
| VRT_CD | S08 |
| TIS_FLAG | @ |
| VIN_CD | 1FMPJ18L31L |
| LBR_COST | |
| VEH_LINE_CD | T83 |
| MKT_DERIVED | * |
| BOD_CAB_STL | TVA |
| VER_SERIES_C | T/EF |
| DRIVE_CD | T/E |
| ENG_CD | T/VZ |

| | |
|---------------------|-----------------------|
| ID | 43 |
| MDL_YR | 2001 |
| SORT_INDEX | 271 |
| TRANS_CD | T/DE |
| PLANT_CD | AP |
| PRODN_DT | 6/8/2001 |
| WRTY_START_D | 9/24/2001 |
| NAME | LITHIA FORD OF FRESNO |
| DOC_NUM | 119844A |
| PH_NUM | 4358400 |
| WCC_CD | 8R02 |
| PART_NUM_CA | 1L7Z |
| PART_NUM_CA | |
| PART_NUM_CA | AAA |
| CUST_CONC_C | 840 |
| COND_CD | 41 |
| RPR_DT | 9/27/2001 |
| TIS_WSD | 1 |
| CLM_KEY | 3092014 |
| MILGE | 417 |
| MTRL_COST | |
| TOT_COST_GRO | |
| LRR_HRS | |
| DLR_CD | 2811 |
| DLR_SUB_CD | * |
| REGION_CD | NA |
| ST_PROV_CD | CA |
| Field27 | c |
| CPSC_CD_6 | 11001 |

| | |
|---------------------|--|
| TECH_TXT1 | INSTALLED PASS SIDE SEAT BELT BUCKLE AS CUST REQUESTED |
| TECH_TXT2 | |
| CUST_TXT | CUST. STATES SEAT BUCKLE PASS FRONT CAME APART. |
| AREA_CD | 559 |
| COUNTRY_CD | USA |
| SLS_DLR_CD | 171040 |
| TXN_CD | 2 |
| CNTRY_SOLD | USA |
| QRT_CD | Q21 |
| VFG_CD | V05 |
| AWS_VL_CD | B3 |
| VRT_CD | S05 |
| TIS_FLAG | |
| VIN_CD | 1FMPU18L11L [REDACTED] |
| LBR_COST | [REDACTED] |
| VEH_LINE_CD | TB3 |
| MKT_DERIVED | |
| BOD_CAB_STL | TNA |
| VER_SERIES_C | TEF |
| DRIVE_CD | TE |
| ENG_CD | TVZ |

| | |
|--------------|-----------------------------|
| ID | 44 |
| MDL_YR | 2001 |
| SORT_INDEX | 278 |
| TRANS_CD | TDE |
| PLANT_CD | AP |
| PRODN_DT | 4/22/2001 |
| WRTY_START_D | 11/2/2001 |
| NAME | FOX LAKE FORD MERCURY, INC. |
| DOC_NUM | 800701 |
| PH_NUM | 5873400 |
| WCC_CD | 6R02 |
| PART_NUM_CA | 1L7Z |
| PART_NUM_CA | 7851202 |
| PART_NUM_CA | AAB |
| CUST_CONC_C | S40 |
| COND_CD | 42 |
| RPR_DT | 1/8/2002 |
| TIS_WSD | 3 |
| CLM_KEY | 6187834 |
| MILGE | 3847 |
| MYRL_COST | |
| TOT_COST_GRO | |
| LBR_HRS | |
| DLR_CD | 1552 |
| DLR_SUB_CD | |
| REGION_CD | NA |
| ST_PROV_CD | L |
| Field27 | c |
| CPSC_CD_6 | 12001 |

| | |
|---------------------|---|
| TECH_TXT1 | INSPECT, REPLACE DRIVERS SIDE AND PASSENGER SIDE FRONT SEAT BELT BUCKLES |
| TECH_TXT2 | |
| CUST_TXT | DRIVERS SEAT BELT COMES UNBUCKLED |
| AREA_CD | 847 |
| COUNTRY_CD | USA |
| SLS_DLR_CD | 141418 |
| TXN_CD | 1 |
| CNTRY_SOLD | USA |
| QRT_CD | Q21 |
| VFG_CD | V05 |
| AWS_VL_CD | B3 |
| VRT_CD | 808 |
| TIS_FLAG | |
| VIN_CD | 1FMPU16LX1L [REDACTED] |
| LBR_COST | [REDACTED] |
| VEH_LINE_CD | T83 |
| MKT_DERIVED | * |
| BOD_CAB_STL | TMD |
| VER_SERIES_C | TEF |
| DRIVE_CD | TE |
| ENG_CD | TVZ |

| | |
|---------------------|---------------------------|
| ID | 45 |
| MDL_YR | 2001 |
| SORT_INDEX | 280 |
| TRANS_CD | TIDE |
| PLANT_CD | AP |
| PRODN_DT | 4/19/2001 |
| WRTY_START_D | 5/8/2001 |
| NAME | SIGNATURE LINCOLN-MERCURY |
| DOC_NUM | 1812151 |
| PH_NUM | 4670321 |
| WCC_CD | 6R02 |
| PART_NUM_CA | 1L7Z |
| PART_NUM_CA | |
| PART_NUM_CA | ANC |
| CUST_CONC_C | 840 |
| COND_CD | 33 |
| RPR_DT | 11/21/2001 |
| TIS_WSD | 7 |
| CLM_KEY | 5317825 |
| MILGE | 10135 |
| MTRL_COST | |
| TOT_COST_GRO | |
| LBR_HRS | |
| DLR_CD | 12739 |
| DLR_SUB_CD | |
| REGION_CD | NA |
| ST_PROV_CD | NV |
| Field27 | b |
| CPSC_CD_6 | 11001 |

| | | |
|---------------------|-------------------------------------|-----------------|
| TECH_TXT1 | RECALL | DONE PER RECALL |
| TECH_TXT2 | | |
| CUST_TXT | PASS SEAT BELT WONT STAY LATCHED | SOPART HERE |
| AREA_CD | 702 | |
| COUNTRY_CD | USA | |
| SLS_DLR_CD | 183000 | |
| TXN_CD | 2 | |
| CNTRY_SOLD | USA | |
| QRT_CD | Q21 | |
| VFG_CD | V05 | |
| AWS_VL_CD | B3 | |
| VRT_CD | S06 | |
| TIS_FLAG | | |
| VIN_CD | 1FMPU16LX1L | |
| LBR_COST | | |
| VEH_LINE_CD | T1B3 | |
| MKT_DERIVED | * | |
| BOD_CAB_STL | TW0 | |
| VEH_SERIES_C | T/EF | |
| DRIVE_CD | T/E | |
| ENG_CD | TN2 | |

| | |
|---------------------|------------------|
| ID | 40 |
| MDL_YR | 2001 |
| SORT_INDEX | 281 |
| TRANS_CD | TDE |
| PLANT_CD | AP |
| PRODN_DT | 3/11/2001 |
| WRTY_START_D | 3/31/2001 |
| NAME | INVER GROVE FORD |
| DOC_NUM | 29849001 |
| PH_NUM | 4812201 |
| WCC_CD | GR02 |
| PART_NUM_CA | 1L7Z |
| PART_NUM_CA | 7881202 |
| PART_NUM_CA | AAB |
| CUST_CONC_C | S20 |
| COND_CD | 42 |
| RPR_DT | 1/31/2002 |
| TIS_WSD | 11 |
| CLM_KEY | 8815850 |
| MILGE | 16902 |
| MTRL_COST | |
| TOT_COST_GRO | |
| LBR_HRS | |
| DLR_CD | 9179 |
| DLR_SUB_CD | * |
| REGION_CD | NA |
| ST_PROV_CD | MN |
| Field27 | C |
| CPSC_CD_6 | 12001 |

| | |
|---------------------|--|
| TECH_TXT1 | INSTALLED SO SEAT BELT BUCKLE. RETESTED OK |
| TECH_TXT2 | |
| CUST_TXT | CUST STATES THE DR SIDE BUCKLE WILL RELEASE SEAT BELT AT TIMES, INSTALL SOP 1L7Z.7#6 |
| AREA_CD | 661 |
| COUNTRY_CD | USA |
| SLS_DLR_CD | 158406 |
| TXN_CD | EB4 |
| CNTRY_SOLD | USA |
| QRY_CD | Q21 |
| VFG_CD | V05 |
| AWS_VL_CD | B3 |
| VRT_CD | 906 |
| TIS_FLAG | |
| VIN_CD | 1FMPU16LX1L |
| LBR_COST | |
| VEH_LINE_CD | T#3 |
| MKT_DERIVED | |
| BOD_CAB_STL | TWD |
| VER_SERIES_C | T/E |
| DRIVE_CD | T/E |
| ENG_CD | TNZ |

| | |
|--------------|----------------------|
| ID | 47 |
| MDL_YR | 2001 |
| SORT_INDEX | 288 |
| TRANS_CD | TIDE |
| PLANT_CD | AP |
| PRODN_DT | 4/18/2001 |
| WRTY_START_D | 5/7/2001 |
| NAME | HERTZ RAC - COLUMBIA |
| DOC_NUM | 64469401 |
| PH_NUM | * |
| WCC_CD | 6R02 |
| PART_NUM_CA | 1L7Z |
| PART_NUM_CA | 7851202 |
| PART_NUM_CA | AAA |
| CUST_CONC_C | S26 |
| COND_CD | 42 |
| RPR_DT | 4/4/2002 |
| TIS_WSD | 12 |
| CLM_KEY | 8208200 |
| MILGE | 25053 |
| MTRL_COST | |
| TOT_COST_GRO | |
| LBR_HRS | |
| DLR_CD | 48278 |
| DLR_SUB_CD | * |
| REGION_CD | NA |
| ST_PROV_CD | SC |
| Field27 | a |
| CPSC_CD_6 | 12001 |

| | |
|---------------------|-----------------------------------|
| TECH_TXT1 | REPLACED THE BUCKLE ASSY |
| TECH_TXT2 | |
| CUST_TXT | FRONT SEAT BELT BUCKLES WONT HOLD |
| AREA_CD | * |
| COUNTRY_CD | USA |
| SLS_DLR_CD | 116802 |
| TXN_CD | E84 |
| CNTRY_SOLD | USA |
| QRT_CD | Q21 |
| VFG_CD | V06 |
| AWS_VL_CD | B3 |
| VRT_CD | S08 |
| TIS_FLAG | @ |
| VIN_CD | 1FMPU16L21 [REDACTED] |
| LBR_COST | [REDACTED] |
| VEH_LINE_CD | T83 |
| MKT_DERIVED | * |
| BOD_CAB_STL | TWD |
| VER_SERIES_C | T7F |
| DRIVE_CD | T/E |
| ENG_CD | TMZ |

| | |
|--------------|-------------------|
| ID | 46 |
| MDL_YR | 2001 |
| SORT_INDEX | 201 |
| TRANS_CD | T/DE |
| PLANT_CD | AP |
| PRODN_DT | 1/7/2001 |
| WRTY_START_D | 2/2/2001 |
| NAME | DENNISON FORD INC |
| DOC_NUM | 22075801 |
| PH_NUM | 0631331 |
| WCC_CD | 0R02 |
| PART_NUM_CA | 1L7Z |
| PART_NUM_CA | 7851202 |
| PART_NUM_CA | AAB |
| CUST_CONC_C | 040 |
| COND_CD | 42 |
| RPR_DT | 1/18/2002 |
| TIS_WSD | 12 |
| CLM_KEY | 6386010 |
| MILGE | 33441 |
| MTRL_COST | |
| TOT_COST_GRO | |
| LBR_HRS | |
| DLR_CD | 20146 |
| DLR_SUB_CD | |
| REGION_CD | NA |
| ST_PROV_CD | IL |
| Field27 | b |
| CPSC_CD_6 | 12001 |

| | |
|---------------------|--|
| TECH_TXT1 | CONFIRMED CUSTOMERS CONCERN REPLACED RIGHT FRONT SEAT BELT BUCKLE |
| TECH_TXT2 | |
| CUST_TXT | CUSTOMER STATES PASSENGER SIDE FRONT SEAT BELT DOES NOT STAY LATCHED PARTS ARE IN |
| AREA_CD | 309 |
| COUNTRY_CD | USA |
| SLS_DLR_CD | 141448 |
| TXN_CD | E84 |
| CNTRY_SOLD | USA |
| QRT_CD | Q21 |
| VFG_CD | V05 |
| AWS_VL_CD | B3 |
| VRT_CD | 808 |
| TIS_FLAG | |
| VIN_CD | 1FMPU18L71L [REDACTED] |
| LBR_COST | [REDACTED] |
| VEH_LINE_CD | T/B3 |
| MRT_DERIVED | |
| BOD_CAB_STL | TWD |
| VER_SERIES_C | T/EF |
| DRIVE_CD | T/E |
| ENG_CD | T/VZ |

| | |
|---------------------|------------|
| ID | 40 |
| MDL_YR | 2001 |
| SORT_INDEX | 293 |
| TRANS_CD | TIDE |
| PLANT_CD | AP |
| PRODN_DT | 4/17/2001 |
| WRTY_START_D | 5/2/2001 |
| NAME | BERGE FORD |
| DOC_NUM | 16258701 |
| PH_NUM | 4971111 |
| WCC_CD | BR02 |
| PART_NUM_CA | 1L7Z |
| PART_NUM_CA | 7861202 |
| PART_NUM_CA | AAA |
| CUST_CONC_C | S28 |
| COND_CD | 42 |
| RFR_DT | 9/15/2002 |
| TIS_WSD | 11 |
| CLM_KEY | 7457704 |
| MILGE | 4165 |
| MTRL_COST | |
| TOT_COST_GRO | |
| LBR_HRS | |
| DLR_CD | 20305 |
| DLR_SUB_CD | * |
| REGION_CD | NA |
| ST_PROV_CD | AZ |
| Field27 | c |
| CPSC_CD_6 | 12001 |

| | |
|---------------------|---|
| TECH_TXT1 | VERIFIED R F BUCKLE COMES UNBUCKLED BY ITSELF CCC S26 REPLACED RIGHT FRONT BUCKLE, GOOD. |
| TECH_TXT2 | |
| CUST_TXT | CUST STS PASS FT BEAT BELY COMES UNBUCKLED BY ITSELF |
| AREA_CD | 480 |
| COUNTRY_CD | USA |
| SLS_DLR_CD | 171227 |
| TXN_CD | 2 |
| CNTRY_SOLD | USA |
| QRT_CD | Q21 |
| VFG_CD | V05 |
| AWS_VL_CD | B3 |
| VRT_CD | S08 |
| TIS_FLAG | |
| VIN_CD | 1FMPU16L81L |
| LBR_COST | |
| VEH_LINE_CD | T/B3 |
| MKT_DERIVED | * |
| BOD_CAB_STL | TWD |
| VER_SERIES_C | T/EF |
| DRIVE_CD | T/E |
| ENG_CD | TN2 |

| | |
|---------------------|----------------------|
| ID | 58 |
| MDL_YR | 2001 |
| SORT_INDEX | 297 |
| TRANS_CD | TIDE |
| PLANT_CD | AP |
| PRODN_DT | 12/18/2000 |
| WRTY_START_D | 1/5/2001 |
| NAME | FOLSOM LAKE FORD INC |
| DOC_NUM | 32871402 |
| PH_NUM | 3532000 |
| WCC_CD | 6R02 |
| PART_NUM_CA | 1L7Z |
| PART_NUM_CA | 7881202 |
| PART_NUM_CA | AAS |
| CUST_CONC_C | S25 |
| COND_CD | 42 |
| RPR_DT | 3/2/2002 |
| TIS_WSD | 15 |
| CLM_KEY | 7271571 |
| MILGE | 21541 |
| MTRL_COST | |
| TOT_COST_GRO | |
| LBR_HRS | |
| DLR_CD | 7727 |
| DLR_SUB_CD | * |
| REGION_CD | NA |
| ST_PROV_CD | CA |
| Field27 | C |
| CPSC_CD_6 | 12001 |

| | |
|---------------------|---|
| TECH_TXT1 | REPLACE SEAT BELT |
| TECH_TXT2 | |
| CUST_TXT | CS FRT PASS SEAT BELT UNLATCHED BY ITSELF |
| AREA_CD | 918 |
| COUNTRY_CD | USA |
| SLS_DLR_CD | 171227 |
| TXN_CD | E84 |
| CNTRY_SOLD | USA |
| QRT_CD | Q21 |
| VFG_CD | V06 |
| AWS_VL_CD | 63 |
| VRT_CD | S08 |
| TIS_FLAG | |
| VIN_CD | 1FMPU18L41 |
| LRR_COST | |
| VEH_LINE_CD | T/B3 |
| MKT_DERIVED | * |
| BOD_CAB_STL | TWD |
| VER_SERIES_C | TIEF |
| DRIVE_CD | TIE |
| ENG_CD | TNZ |

| | |
|---------------------|---------------------------|
| ID | 51 |
| MDL_YR | 2001 |
| SORT_INDEX | 307 |
| TRANS_CD | TIDE |
| PLANT_CD | AP |
| PRODN_DT | 4/19/2001 |
| WRTY_START_D | 5/10/2001 |
| NAME | SIGNATURE LINCOLN-MERCURY |
| DOC_NUM | 1688351 |
| PH_NUM | 4570321 |
| WCC_CD | 6R02 |
| PART_NUM_CA | 1L7Z |
| PART_NUM_CA | |
| PART_NUM_CA | AAC |
| CUST_CONC_C | 340 |
| COND_CD | 42 |
| RPR_DT | 11/28/2001 |
| TIS_WSD | 7 |
| CLM_KEY | 5413162 |
| MILGE | 7081 |
| MTRL_COST | |
| TOT_COST_GRO | |
| LBR_HRS | |
| DLR_CD | 12739 |
| DLR_SUB_CD | * |
| REGION_CD | NA |
| ST_PROV_CD | NV |
| Field27 | b |
| CPSC_CD_6 | 11001 |

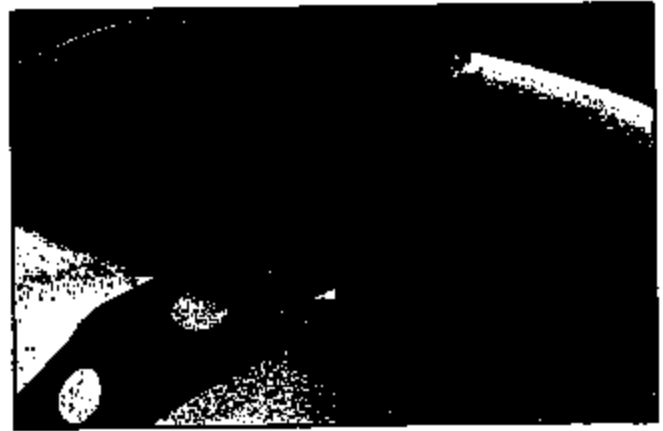
| | |
|---------------------|---|
| TECH_TXT1 | INSTALL SOP |
| TECH_TXT2 | |
| CUST_TXT | PASS SEAT BELT WONT STAY LATCHED SOPART HERE |
| AREA_CD | 702 |
| COUNTRY_CD | USA |
| SLS_DLR_CD | 183000 |
| TXN_CD | 2 |
| CNTRY_SOLD | USA |
| QRT_CD | Q21 |
| VFG_CD | V05 |
| AWS_VL_CD | B3 |
| VRT_CD | S08 |
| TIS_FLAG | |
| VIN_CD | 1FMFU16L21L |
| LBR_COST | |
| VEH_LINE_CD | TRE3 |
| MKT_DERIVED | * |
| BOD_CAB_STL | TWO |
| VER_SERIES_C | TRE |
| DRIVE_CD | TRE |
| ENG_CD | TNZ |

| | |
|---------------------|---------------------------|
| ID | 52 |
| MDL_YR | 2001 |
| SORT_INDEX | 308 |
| TRANS_CD | T/DX |
| PLANT_CD | AP |
| PRODN_DT | 8/28/2001 |
| WRTY_START_D | 7/28/2001 |
| NAME | KING CHARLIE HILLARD FORD |
| DOC_NUM | 21258901 |
| PH_NUM | 3705000 |
| WCC_CD | BR02 |
| PART_NUM_CA | 1L72 |
| PART_NUM_CA | 7061202 |
| PART_NUM_CA | AAB |
| CUST_CONC_C | S40 |
| COND_CD | 42 |
| RPR_DT | 2/20/2002 |
| TIS_WSD | 7 |
| CLM_KEY | 7010919 |
| MILGE | 8883 |
| MTRL_COST | |
| TOT_COST_GRO | |
| LBR_HRS | |
| DLR_CD | 2478 |
| DLR_SUB_CD | * |
| REGION_CD | NA |
| ST_PROV_CD | TX |
| Field27 | C |
| CPSC_CD_6 | 12001 |

| | |
|---------------------|---|
| TECH_TXT1 | CONFIRMED CONCERN. FOUND PASS. SEAT BELT BUCKLE COMING LOOSE INTERNALLY. R&I PASSENGER SEAT TO REPL. BELT MD 8883 |
| TECH_TXT2 | |
| CUST_TXT | S28 CUSTOMER SAID PASS FRT SEAT BELT BUCKLE RATTLES WHILE DRIVING ON HIGHWAY |
| AREA_CD | 817 |
| COUNTRY_CD | USA |
| SLS_DLR_CD | 132010 |
| TXN_CD | 1 |
| CNTRY_SOLD | USA |
| QRT_CD | Q21 |
| VFG_CD | V05 |
| AWS_VL_CD | B3 |
| VRT_CD | 808 |
| TIS_FLAG | |
| VIN_CD | 1FMPU16L211 [REDACTED] |
| LRR_COST | [REDACTED] |
| VEH_LINE_CD | T/B3 |
| MKT_DERIVED | * |
| BOD_CAB_STL | TWD |
| VER_SERIES_C | TYEF |
| DRIVE_CD | T/E |
| ENG_CD | T/VZ |

| | |
|---------------------|-------------------|
| ID | 53 |
| MDL_YR | 2001 |
| SORT_INDEX | 911 |
| TRANS_CD | TDE |
| PLANT_CD | AP |
| PRODN_DT | 5/25/2001 |
| WRTY_START_D | 7/1/2001 |
| NAME | PURVIS FORD, INC. |
| DOC_NUM | 007007A |
| PH_NUM | 8983000 |
| WCC_CD | BR02 |
| PART_NUM_CA | 1L7Z |
| PART_NUM_CA | 7851202 |
| PART_NUM_CA | AAC |
| CUST_CONC_C | S26 |
| COND_CD | 42 |
| RPR_DT | 10/1/2001 |
| TIS_WSD | 3 |
| CLM_KEY | 4132952 |
| MILGE | 4 |
| MTRL_COST | |
| TOT_COST_GRO | |
| LBR_HRS | |
| DLR_CD | 81 |
| DLR_SUB_CD | * |
| REGION_CD | NA |
| ST_PROV_CD | VA |
| Field27 | c |
| CPSC_CD_6 | 12001 |

3. Cover the tire with a cloth to protect it from metal shavings. Cut off the stud bolt near the frame, being careful not to scratch the paint on the frame.



4. Make a punch mark in the center of the bolt. Make a punch mark in the center of the bolt. Drill the stud bolt out in three stages. First, drill a 1/8" (3.18mm) pilot hole, then a 1/4" (6.35mm) hole. Finally, use a 21/64" (8.33) drill bit to finish drilling out the stud bolt completely.



| | |
|---------------------|--------------------|
| ID | 54 |
| MDL_YR | 2001 |
| SORT_INDEX | 312 |
| TRANS_CD | TIDE |
| PLANT_CD | AP |
| PRODN_DT | 4/18/2001 |
| WRTY_START_D | 5/3/2001 |
| NAME | HERTZ RAC - DENVER |
| DOC_NUM | 44713701 |
| PH_NUM | * |
| WCC_CD | 6R02 |
| PART_NUM_CA | 1L72 |
| PART_NUM_CA | 7881202 |
| PART_NUM_CA | AAA |
| CUST_CONC_C | 540 |
| COND_CD | 42 |
| RPR_DT | 11/1/2001 |
| TIS_WSD | 7 |
| CLM_KEY | 6005026 |
| MILGE | 18603 |
| MTRL_COST | |
| TOT_COST_GRO | |
| LBR_HRS | |
| DLR_CD | 45248 |
| DLR_SUB_CD | * |
| REGION_CD | NA |
| ST_PROV_CD | CO |
| Field7 | 8 |
| CPSC_CD_6 | 12001 |

| | |
|---------------------|--|
| TECH_TXT1 | REPLACED THE BELT |
| TECH_TXT2 | |
| CUST_TXT | CHECK FRONT SEATBELT BUCKLES WONT HOLD |
| AREA_CD | * |
| COUNTRY_CD | USA |
| SLS_DLR_CD | 156823 |
| TXN_CD | E84 |
| CNTRY_SOLD | USA |
| QRT_CD | Q21 |
| VTG_CD | V05 |
| AWS_VL_CD | B3 |
| VRT_CD | S08 |
| TIS_FLAG | |
| VIN_CD | 1FMPU18L11 [REDACTED] |
| LBR_COST | [REDACTED] |
| VEH_LINE_CD | T1B3 |
| MKT_DERIVED | * |
| BOD_CAR_STL | TWD |
| VER_SERIES_C | T1EF |
| DRIVE_CD | T1E |
| ENG_CD | TVZ |

| | |
|---------------------|-------------------------|
| ID | 55 |
| MDL_YR | 2001 |
| SORT_INDEX | 313 |
| TRANS_CD | T/DE |
| PLANT_CD | AP |
| PRODN_DT | 4/12/2001 |
| WRTY_START_D | 6/16/2001 |
| NAME | SUNTRUP FORD - KIRKWOOD |
| DOC_NUM | 004124A |
| PH_NUM | B228300 |
| WCC_CD | 6R02 |
| PART_NUM_CA | 1L7Z |
| PART_NUM_CA | 7561202 |
| PART_NUM_CA | AAC |
| CUST_CONC_C | B40 |
| COND_CD | 42 |
| RPR_DT | 8/16/2001 |
| TIS_WSD | 3 |
| CLM_KEY | 9063990 |
| MILGE | 1000 |
| MTRL_COST | |
| TOT_COST_GRO | |
| LBR_HRS | |
| DLR_CD | 2722 |
| DLR_SUB_CD | * |
| REGION_CD | NA |
| ST_PROV_CD | MD |
| Field27 | * |
| CPSC_CD_6 | 12001 |

| | |
|---------------------|--|
| TECH_TXT1 | REPLACED BOTH SEAT BELT BUCKLES |
| TECH_TXT2 | |
| CUST_TXT | OWNER STATES DRIVER SEATBELT NOT HOLDING |
| AREA_CD | 314 |
| COUNTRY_CD | USA |
| SLS_DLR_CD | 153062 |
| TXN_CD | 2 |
| CNTRY_SOLD | USA |
| QRT_CD | Q21 |
| VFG_CD | V06 |
| AWS_VL_CD | B3 |
| VRT_CD | S08 |
| TIS_FLAG | |
| VIN_CD | 1FMPU18L11U |
| LBR_COST | |
| VEH_LINE_CD | T/B3 |
| MKT_DERIVED | * |
| BOD_CAB_STL | TWD |
| VER_SERIES_C | T/EF |
| DRIVE_CD | T/E |
| ENG_CD | TN2 |

| | |
|---------------------|-------------------------|
| ID | 56 |
| MDL_YR | 2001 |
| SORT_INDEX | 315 |
| TRANS_CD | TIDE |
| PLANT_CD | AP |
| PRODN_DT | 6/6/2001 |
| WRTY_START_D | 7/26/2001 |
| NAME | RAABE MOTOR SALES, INC. |
| DOC_NUM | 043378A |
| PH_NUM | 0920065 |
| WCC_CD | BR02 |
| PART_NUM_CA | 1L7Z |
| PART_NUM_CA | 7881202 |
| PART_NUM_CA | AAC |
| CUST_CONC_C | 540 |
| COND_CD | 42 |
| RPR_DT | 7/26/2001 |
| TIS_WSD | 1 |
| CLM_KEY | 2959818 |
| MILGE | 570 |
| MTRL_COST | |
| TOT_COST_GRO | |
| LBR_HRS | |
| DLR_CD | 2188 |
| DLR_SUB_CD | |
| REGION_CD | NA |
| ST_PROV_CD | OH |
| Field27 | a |
| CPSC_CD_6 | 12001 |

| | |
|---------------------|-----------------------------------|
| TECH_TXT1 | BUCKLE COMES LOOSE, REPLACE |
| TECH_TXT2 | |
| CUST_TXT | PASSENGER SEAT BELT DOES NOT HOLD |
| AREA_CD | 419 |
| COUNTRY_CD | USA |
| SLS_DLR_CD | 148078 |
| TXN_CD | 2 |
| CNTRY_SOLD | USA |
| QRT_CD | Q21 |
| VFG_CD | V05 |
| AWS_VL_CD | B3 |
| VRT_CD | S08 |
| TIS_FLAG | |
| VIN_CD | 1FMPU16L01L [REDACTED] |
| LRR_COST | [REDACTED] |
| VEH_LINE_CD | T/B3 |
| MKT_DERIVED | * |
| BOD_CAR_STL | T/WD |
| VER_SERIES_C | T/EF |
| DRIVE_CD | T/E |
| ENG_CD | T/NZ |

| | |
|---------------------|--------------------------|
| ID | 57 |
| MDL_YR | 2001 |
| SORT_INDEX | 318 |
| TRANS_CD | T/DE |
| PLANT_CD | AP |
| PRODN_DT | 1/24/2001 |
| WRTY_START_D | 2/8/2001 |
| NAME | GRAND PRAIRIE FORD, INC. |
| DOC_NUM | 6882204 |
| PH_NUM | 6411334 |
| WCC_CD | 6R02 |
| PART_NUM_CA | 1L7Z |
| PART_NUM_CA | 7881202 |
| PART_NUM_CA | AAA |
| CUST_CONC_C | 940 |
| COND_CD | 42 |
| RPR_DT | 1/22/2002 |
| TIS_WSD | 12 |
| CLM_KEY | 0670228 |
| MILGE | 16508 |
| MTRL_COST | |
| TOT_COST_GRO | |
| LBR_HRS | |
| DLR_CD | 2408 |
| DLR_SUB_CD | |
| REGION_CD | NA |
| ST_PROV_CD | TX |
| Field27 | c |
| CPSC_CD_6 | 12001 |

| | |
|---------------------|--|
| TECH_TXT1 | MO 16806 CC 42 61202 VERIFIED CUSTOMER CONCERN. REPLACED PASSENGER FRONT SEAT BELT BUCKLE. BUCKET SEATS, REMOVE SEAT TO ACCESS |
| TECH_TXT2 | |
| CUST_TXT | 840 CUSTOMER STATES RT FT SEAT BELT BUCKLE RELEASES WHILE DRIVING |
| AREA_CD | 214 |
| COUNTRY_CD | USA |
| SLS_DLR_CD | 158823 |
| TXN_CD | EB4 |
| CNTRY_SOLD | USA |
| QRT_CD | Q21 |
| VFG_CD | V05 |
| AWS_VL_CD | B3 |
| VRT_CD | S08 |
| TIS_FLAG | |
| VIN_CD | 1FMPL116LML [REDACTED] |
| LBR_COST | [REDACTED] |
| VEH_LINE_CD | T83 |
| MKT_DERIVED | |
| BOD_CAB_STL | TMD |
| VER_SERIES_C | T7F |
| DRIVE_CD | T7E |
| ENG_CD | TN2 |

| | |
|---------------------|-------------------------------|
| ID | 58 |
| MDL_YR | 2001 |
| SORT_INDEX | 323 |
| TRANS_CD | TIDE |
| PLANT_CD | AP |
| PRODN_DT | 3/2/2001 |
| WRTY_START_D | 3/31/2001 |
| NAME | PHIL LONG FORD OF DENVER, LLC |
| DOC_NUM | 61414803 |
| PH_NUM | 8323873 |
| WCC_CD | 6R02 |
| PART_NUM_CA | 1L7Z |
| PART_NUM_CA | 7861202 |
| PART_NUM_CA | AAA |
| CUST_CONC_C | S25 |
| COND_CD | 41 |
| RPR_DT | 11/8/2001 |
| TIS_WSD | 6 |
| CLM_KEY | 5128633 |
| MILGE | 10734 |
| MTRL_COST | |
| TOT_COST_GRO | |
| LRR_HRS | |
| DLR_CD | 3130 |
| DLR_SUB_CD | * |
| REGION_CD | NA |
| ST_PROV_CD | CO |
| Field27 | # |
| CPSC_CD_6 | 12001 |

Tuesday, December 14, 2004

Page 115 of 142

RQ04-011 E 1448

| | |
|---------------------|--|
| TECH_TXT1 | REPLACED SEAT BELT BUCKLE AND RETESTED.4837 |
| TECH_TXT2 | |
| CUST_TXT | CUSTOMER STATES THE PASSENGER FRONT SEAT BELT DOES NOT LOCK PROPERLY. STATES WILL COME UNBUCKLED AT TIMES. |
| AREA_CD | 303 |
| COUNTRY_CD | USA |
| SLS_DLR_CD | 158002 |
| TXN_CD | 1 |
| CNTRY_SOLD | USA |
| QRT_CD | Q21 |
| VFG_CD | V06 |
| AWS_VL_CD | E3 |
| VRT_CD | 808 |
| TIS_FLAG | |
| VIN_CD | 1FMFU18LX1 [REDACTED] |
| LBR_COST | [REDACTED] |
| VEH_LINE_CD | T/83 |
| MKT_DERIVED | * |
| BOD_CAB_STL | TVA |
| VER_SERIES_C | TEF |
| DRIVE_CD | TE |
| ENG_CD | TN3 |

| | |
|--------------|--------------------|
| ID | 58 |
| MDL_YR | 2001 |
| SORT_INDEX | 325 |
| TRANS_CD | T/OE |
| PLANT_CD | AP |
| PRODN_DT | 4/20/2001 |
| WRTY_START_D | 10/1/2001 |
| NAME | SUNSET AUTO CO INC |
| DOC_NUM | 25484101 |
| PH_NUM | 0434431 |
| WCC_CD | BRC2 |
| PART_NUM_CA | 1L7Z |
| PART_NUM_CA | 7861202 |
| PART_NUM_CA | AAA |
| CUST_CONC_C | 640 |
| COND_CD | 42 |
| RPR_DT | 9/20/2001 |
| TIS_WSD | 0 |
| CLM_KEY | 4263960 |
| MILGE | 12 |
| MTRL_COST | |
| TOT_COST_GRO | |
| LBR_HRS | |
| DLR_CD | 6198 |
| DLR_SUB_CD | * |
| REGION_CD | NA |
| ST_PROV_CD | MO |
| Field27 | * |
| CPSC_CD_6 | 12001 |

| | |
|---------------------|--------------------------------|
| TECH_TXT1 | REPLACED BOTH SEATBELTS |
| TECH_TXT2 | |
| CUST_TXT | SEATBELT WILL NOT HOLD IN LOCK |
| AREA_CD | 314 |
| COUNTRY_CD | USA |
| SLS_DLR_CD | 153082 |
| TXN_CD | 2 |
| CNTRY_SOLD | USA |
| QRT_CD | Q21 |
| VFG_CD | V05 |
| AWS_VL_CD | B3 |
| VRT_CD | S08 |
| TIS_FLAG | |
| VIN_CD | 1FMFU16L81L [REDACTED] |
| LBR_COST | [REDACTED] |
| VEH_LINE_CD | T83 |
| MKT_DERIVED | * |
| BOD_CAB_STL | TVA |
| VER_SERIES_C | T8F |
| DRIVE_CD | T/E |
| ENG_CD | TN2 |

| | |
|--------------|---------------------|
| ID | 80 |
| MDL_YR | 2001 |
| SORT_INDEX | 325 |
| TRANS_CD | T/DE |
| PLANT_CD | AP |
| PRODN_DT | 1/17/2001 |
| WRTY_START_D | 1/25/2001 |
| NAME | SHEEHY FORD MERCURY |
| DOC_NUM | 10289501 |
| PH_NUM | 7884781 |
| WCC_CD | 6R02 |
| PART_NUM_CA | 1L72 |
| PART_NUM_CA | 7881202 |
| PART_NUM_CA | AAA |
| CUST_CONC_C | S25 |
| COND_CD | 42 |
| RPR_DT | 11/28/2001 |
| TIS_WSD | 11 |
| CLM_KEY | 8484601 |
| MILGE | 18122 |
| MTRL_COST | |
| TOY_COST_GRO | |
| LBR_HRS | |
| DLR_CD | 4224 |
| DLR_SUB_CD | |
| REGION_CD | NA |
| ST_PROV_CD | VA |
| Field27 | b |
| CPSC_CD_6 | 12001 |

| | |
|---------------------|---|
| TECH_TXT1 | REPLACE PASS. SIDE SEAT BELT BUCKLE |
| TECH_TXT2 | |
| CUST_TXT | SEAT BELT ON PASS. SIDE COMES UNBUCKLED RECALL?? |
| AREA_CD | R04 |
| COUNTRY_CD | USA |
| SLS_DLR_CD | 127072 |
| TXN_CD | EB4 |
| CNTRY_SOLD | USA |
| QRT_CD | Q21 |
| VFG_CD | V05 |
| AWS_VL_CD | B3 |
| VRT_CD | 808 |
| TIS_FLAG | |
| VIN_CD | 1FMFLJ18L71 [REDACTED] |
| LBR_COST | [REDACTED] |
| VEH_LINE_CD | T/B3 |
| MKT_DERIVED | * |
| BOD_CAB_STL | TNA |
| VER_SERIES_C | TEF |
| DRIVE_CD | TE |
| ENG_CD | TNZ |

| | |
|---------------------|------------------|
| ID | 81 |
| MDL_YR | 2001 |
| SORT_INDEX | 348 |
| TRANS_CD | T/DE |
| PLANT_CD | AP |
| PRODN_DT | 2/14/2001 |
| WRTY_START_D | 10/1/2001 |
| NAME | MOCKS FORD SALES |
| DOC_NUM | 1674848 |
| PH_NUM | 4786556 |
| WCC_CD | * |
| PART_NUM_CA | * |
| PART_NUM_CA | |
| PART_NUM_CA | * |
| CUST_CONC_C | T80 |
| COND_CD | 41 |
| RPR_DT | 10/8/2001 |
| TIS_WSD | 1 |
| CLM_KEY | 4857236 |
| MILGE | 8573 |
| MTRL_COST | |
| TOT_COST_GRO | |
| LBR_HRS | |
| DLR_CD | 7774 |
| DLR_SUB_CD | * |
| REGION_CD | NA |
| ST_PROV_CD | OR |
| Field27 | a |
| CPSC_CD_6 | |

| | |
|---------------------|--|
| TECH_TXT1 | REMOVED SEAT BELT BUCKEL AND REPAIR TO WORK PROPERLY |
| TECH_TXT2 | |
| CUST_TXT | REPAIR CENTER SEAT BUCKLE WONT LATCH CODE T90 |
| AREA_CD | 941 |
| COUNTRY_CD | USA |
| SLS_DLR_CD | 172422 |
| TXN_CD | 2 |
| CNTRY_SOLD | USA |
| QRT_CD | |
| VFG_CD | V74 |
| AWS_VL_CD | B3 |
| VRT_CD | 308 |
| TIS_FLAG | @ |
| VIN_CD | 1FMPU1BL21L [REDACTED] |
| LBR_COST | [REDACTED] |
| VEH_LINE_CD | T/B3 |
| MKT_DERIVED | |
| BOD_CAR_STL | TVA |
| VER_SERIES_C | TIEF |
| DRIVE_CD | T/E |
| ENG_CD | TNZ |

| | |
|--------------|--------------|
| ID | 82 |
| MDL_YR | 2001 |
| SORT_INDEX | 351 |
| TRANS_CD | 7DE |
| PLANT_CD | AP |
| PRODN_DT | 3/15/2001 |
| WRTY_START_D | 6/28/2001 |
| NAME | DARCARS FORD |
| DOC_NUM | 18355201 |
| PH_NUM | 4601100 |
| WCC_CD | 5R02 |
| PART_NUM_CA | 1L7Z |
| PART_NUM_CA | 7861202 |
| PART_NUM_CA | AAA |
| CUST_CONC_C | S40 |
| COND_CD | 42 |
| RPR_DT | 12/19/2001 |
| TIS_WSD | B |
| CLM_KEY | 5881135 |
| MILGE | 4303 |
| MTRL_COST | |
| TOT_COST_GRO | |
| LBR_HRS | |
| DLR_CD | 143 |
| DLR_SUB_CD | |
| REGION_CD | NA |
| ST_PROV_CD | MD |
| Field27 | c |
| CPSC_CD_6 | 12001 |

| | |
|---------------------|---|
| TECH_TXT1 | REPLACE BOTH SEATBELTS,INOPERATIVE COMPONENT. |
| TECH_TXT2 | |
| CUST_TXT | CUSTOMER STATES DRIVERS FRONT SEATBELT KEEPS COMING A LOOSE WAS INSPECT FOR RECALL. |
| AREA_CD | 301 |
| COUNTRY_CD | USA |
| SLS_DLR_CD | 127021 |
| TXN_CD | 1 |
| CNTRY_SOLD | USA |
| QRT_CD | Q21 |
| VFG_CD | V05 |
| AWS_VL_CD | B3 |
| VRT_CD | B06 |
| TIS_FLAG | |
| VIN_CD | 1FMFU18LX1L |
| LBR_COST | |
| VEH_LINE_CD | T783 |
| MKT_DERIVED | * |
| BOD_CAB_STL | T7ND |
| VER_SERIES_C | T7EF |
| DRIVE_CD | T7E |
| ENG_CD | T7NZ |

| | |
|---------------------|--------------------|
| ID | 83 |
| MDL_YR | 2001 |
| SORT_INDEX | 352 |
| TRANS_CD | TDE |
| PLANT_CD | AP |
| PRODN_DT | 4/19/2001 |
| WRTY_START_D | 10/27/2001 |
| NAME | ED KENLEY FORD INC |
| DOC_NUM | 8748531 |
| PH_NUM | 7784201 |
| WCC_CD | 6R02 |
| PART_NUM_CA | 1L7Z |
| PART_NUM_CA | 7881202 |
| PART_NUM_CA | AAB |
| CUST_CONC_C | B40 |
| COND_CD | 42 |
| RPR_DT | 3/28/2002 |
| TIS_WSD | 6 |
| CLM_KEY | 7818050 |
| MILGE | 1801 |
| MTRL_COST | |
| TOT_COST_GRO | |
| LBR_HRS | |
| DLR_CD | 8379 |
| DLR_SUB_CD | * |
| REGION_CD | NA |
| ST_PROV_CD | UT |
| Field27 | 0 |
| CPSC_CD_6 | 12001 |

| | |
|---------------------|--------------------|
| ID | 04 |
| MDL_YR | 2001 |
| SORT_INDEX | 353 |
| TRANS_CD | TIDE |
| PLANT_CD | AP |
| PRODN_DT | 3/1/2001 |
| WRTY_START_D | 4/2/2001 |
| NAME | NORTHTOWN FORD INC |
| DOC_NUM | 0410501 |
| PH_NUM | 0775441 |
| WCC_CD | 0R02 |
| PART_NUM_CA | 1L7Z |
| PART_NUM_CA | 7801202 |
| PART_NUM_CA | AAB |
| CUST_CONC_C | 820 |
| COND_CD | 42 |
| RPR_DT | 4/20/2002 |
| TIS_WSD | 13 |
| CLM_KEY | 0401100 |
| MILGE | 40207 |
| MTRL_COST | |
| TOT_COST_GRO | |
| LBR_HRS | |
| DLR_CD | 0107 |
| DLR_SUB_CD | |
| REGION_CD | NA |
| ST_PROV_CD | K |
| Field27 | |
| CPSC_CD_6 | 12001 |

| | |
|---------------------|--|
| TECH_TXT1 | REPLACE 2 SEAT BELT BUCKLES |
| TECH_TXT2 | |
| CUST_TXT | RT FRT SEAT BELT WONT LATCH INTO BUCKLE MIDDLE SEAT BELT CAME APART |
| AREA_CD | 217 |
| COUNTRY_CD | USA |
| SLS_DLR_CD | 141141 |
| TXN_CD | E81 |
| CNTRY_SOLD | USA |
| QRT_CD | C21 |
| VFG_CD | V05 |
| AWS_VL_CD | B3 |
| VRT_CD | S08 |
| TIS_FLAG | Ⓢ |
| VIN_CD | 1FMFL16L81L |
| LBR_COST | |
| VEH_LINE_CD | T83 |
| MKT_DERIVED | * |
| BOD_CAB_STL | TWD |
| VER_SERIES_C | T7F |
| DRIVE_CD | T/E |
| ENG_CD | TVZ |

| | |
|---------------------|--------------|
| ID | 85 |
| MDL_YR | 2001 |
| SORT_INDEX | 384 |
| TRANS_CD | 70E |
| PLANT_CD | AP |
| PRODN_DT | 10/9/2000 |
| WRTY_START_D | 2/18/2001 |
| NAME | FORD COUNTRY |
| DOC_NUM | 8410551 |
| PH_NUM | 5583873 |
| WCC_CD | BR02 |
| PART_NUM_CA | * |
| PART_NUM_CA | 7851202 |
| PART_NUM_CA | * |
| CUST_CONC_C | 840 |
| COND_CD | 49 |
| RPR_DT | 10/5/2001 |
| TIS_WSD | 8 |
| CLM_KEY | 4188358 |
| MILGE | 8621 |
| MTRL_COST | |
| TOT_COST_GRO | |
| LBR_HRS | |
| DLR_CD | 1440 |
| DLR_SUB_CD | * |
| REGION_CD | NA |
| ST_PROV_CD | NV |
| Field77 | 8 |
| CPSC_CD_6 | 12001 |

| | |
|---------------------|--|
| TECH_TXT1 | FOUND LEFTOVER DEBRIS FROM BUCKLE MANUFACTURING STUCK IN IN LATCH OF BUCKLE.REMOVED PLASTIC DEBRIS.RETEST.QC CHECK.RF BEATBELT BUCKLE OPERATING NORMALLY |
| TECH_TXT2 | |
| CUST_TXT | RT FRONT SHOULDER HARNESS WONT BUCKLE |
| AREA_CD | 702 |
| COUNTRY_CD | USA |
| SLS_DLR_CD | 171160 |
| TXN_CD | 2 |
| CNTRY_SOLD | USA |
| QRT_CD | Q21 |
| VFG_CD | V06 |
| AWS_VL_CD | B3 |
| VRT_CD | S05 |
| TIS_FLAG | |
| VIN_CD | 1FMEU17L41 [REDACTED] |
| LBR_COST | [REDACTED] |
| VEH_LINE_CD | T/B3 |
| MKT_DERIVED | * |
| BOD_CAB_STL | TWD |
| VER_SERIES_C | T/EF |
| DRIVE_CD | T/B |
| ENG_CD | T/NZ |

| | |
|---------------------|---------------------|
| ID | 68 |
| MDL_YR | 2001 |
| SORT_INDEX | 388 |
| TRANS_CD | TIDE |
| PLANT_CD | AP |
| PRODN_DT | 6/1/2001 |
| WRTY_START_D | 6/16/2001 |
| NAME | WATSON QUALITY FORD |
| DOC_NUM | 180244A |
| PH_NUM | 9687000 |
| WCC_CD | 6R02 |
| PART_NUM_CA | 1L7Z |
| PART_NUM_CA | 7851202 |
| PART_NUM_CA | AAA |
| CUST_CONC_C | 840 |
| COND_CD | 42 |
| RPR_DT | 12/21/2001 |
| TIS_WSD | 7 |
| CLM_KEY | 5889838 |
| MILGE | 8088 |
| MTRL_COST | |
| TOT_COST_GRO | |
| LBR_HRS | |
| DLR_CD | 6885 |
| DLR_SUB_CD | |
| REGION_CD | NA |
| ST_PROV_CD | MS |
| Field27 | a |
| CPSC_CD_6 | 12001 |

| | |
|---------------------|--|
| TECH_TXT1 | 0088 61202 42 W R&I PASS SIDE SEAT AND REMOVED OLD SEAT BELT BUCKEL AND INSTALLED NEW ONE Y |
| TECH_TXT2 | |
| CUST_TXT | (840) CK PASS FRONT SEATBELT WILL NOT LATCH |
| AREA_CD | 601 |
| COUNTRY_CD | USA |
| SLS_DLR_CD | 123308 |
| TXN_CD | 1 |
| CNTRY_SOLD | USA |
| QRT_CD | Q21 |
| VFG_CD | V05 |
| AWS_VL_CD | B3 |
| VRT_CD | S08 |
| TIS_FLAG | |
| VIN_CD | 1FMEL17121L [REDACTED] |
| LBR_COST | [REDACTED] |
| VEH_LINE_CD | T/83 |
| MKT_DERIVED | * |
| BOD_CAB_STL | TWD |
| VER_SERIES_C | T/EF |
| DRIVE_CD | TB |
| ENG_CD | TN2 |

| | |
|---------------------|--------------------------------|
| ID | 67 |
| MDL_YR | 2001 |
| SORT_INDEX | 388 |
| TRANS_CD | TIDE |
| PLANT_CD | AP |
| PRODN_DT | 3/2/2001 |
| WRTY_START_D | 4/4/2001 |
| NAME | BILLINGSLEY FORD LINCOLN MERCU |
| DOC_NUM | 189448C |
| PH_NUM | 2566500 |
| WCC_CD | 6R02 |
| PART_NUM_CA | 1L7Z |
| PART_NUM_CA | 7881202 |
| PART_NUM_CA | AAA |
| CUST_CONC_C | 840 |
| COND_CD | 42 |
| RPR_DT | 12/11/2001 |
| TIS_WSD | 9 |
| CLM_KEY | 8388981 |
| MILGE | 14757 |
| MTRL_COST | |
| TOT_COST_GRO | |
| LBR_HRS | |
| DLR_CD | 3898 |
| DLR_SUB_CD | * |
| REGION_CD | NA |
| ST_PROV_CD | OK |
| Field27 | b |
| CPSC_CD_6 | 12001 |

| | |
|---------------------|---|
| TECH_TXT1 | REPLACED BOTH SEAT BELT BUCKLES FOR WILL NOT LATCH |
| TECH_TXT2 | |
| CUST_TXT | DIAG PASS SEAT BELT DOES NOT STAY LATCHED (HAS BEEN CHANGED PER RECALL) |
| AREA_CD | 680 |
| COUNTRY_CD | USA |
| SLS_DLR_CD | 152873 |
| TXN_CD | EB4 |
| CNTRY_SOLD | USA |
| QRT_CD | Q21 |
| VFG_CD | V06 |
| AWS_VL_CD | B3 |
| VRT_CD | 808 |
| TIS_FLAG | |
| VIN_CD | 1FMEU17L01 [REDACTED] |
| LBR_COST | [REDACTED] |
| VEH_LINE_CD | T/B3 |
| MKT_DERIVED | * |
| BOD_CAB_STL | TWD |
| VER_SERIES_C | T/EF |
| DRIVE_CD | T/B |
| ENG_CD | T/VZ |

| | |
|---------------------|-------------------|
| ID | 88 |
| MDL_YR | 2001 |
| SORT_INDEX | 371 |
| TRANS_CD | 7DU |
| PLANT_CD | AP |
| PRODN_DT | 3/6/2001 |
| WRTY_START_D | 9/29/2001 |
| NAME | WALNUT CREEK FORD |
| DOC_NUM | 342886A |
| PH_NUM | 6822800 |
| WCC_CD | 6R02 |
| PART_NUM_CA | 1LTZ |
| PART_NUM_CA | 7881202 |
| PART_NUM_CA | AAC |
| CUST_CONC_C | 840 |
| COND_CD | 42 |
| RPR_DT | 12/18/2001 |
| TIS_WSD | 3 |
| CLM_KEY | 5788554 |
| MILGE | 8311 |
| MTRL_COST | |
| TOT_COST_GRO | |
| LBR_HRS | |
| DLR_CD | 7820 |
| DLR_SUB_CD | * |
| REGION_CD | NA |
| ST_PROV_CD | CA |
| Field27 | c |
| CPSC_CD_6 | 12001 |

| | |
|---------------------|--|
| TECH_TXT1 | 3311 COND 33 (WARR) REMOVED DRIVERS SEAT ASSEMBLY REMOVED SEAT TRACK ASSEMBLY AND HARNESSES REMOVED LOWER SEAT CUSHION COVER REMOVED PINCHED HARNESS AND REROUTE NEW HARNESS REINSTALLED COVER ANDTRAC |
| TECH_TXT2 | K REPLACED BUCKLET RECHECKED OK REPLACE RIGHT BUCKLE LOOSE. |
| CUST_TXT | LEFT FRONT SEAT BELT ASSEMBLY COMES LOOSE WHILE DRIVING. REPLACE LEFT FRONT SEATBELT ASSEMBLY. (SOP) RIGHT FRONT SEAT BELT ASSY COMES LOOSE. |
| AREA_CD | 926 |
| COUNTRY_CD | USA |
| SLS_DLR_CD | 172022 |
| TXN_CD | 1 |
| CNTRY_SOLD | USA |
| QRT_CD | Q21 |
| VFG_CD | V06 |
| AWS_VL_CD | B3 |
| VRT_CD | S08 |
| TIS_FLAG | |
| VIN_CD | 1FMEU15W61 [REDACTED] |
| LBR_COST | [REDACTED] |
| VEH_LINE_CD | T83 |
| MKT_DERIVED | * |
| BOD_CAB_STL | TWU |
| VRR_SERIES_C | TIEF |
| DRIVE_CD | T/B |
| ENG_CD | T/VN |

| | |
|--------------|---------------|
| ID | 68 |
| MDL_YR | 2001 |
| SORT_INDEX | 372 |
| TRANS_CD | TDU |
| PLANT_CD | AP |
| PRODN_DT | 3/13/2001 |
| WRTY_START_D | 3/28/2001 |
| NAME | FRIENDLY FORD |
| DOC_NUM | 444661 |
| PH_NUM | 8707221 |
| WCC_CD | 8R02 |
| PART_NUM_CA | 1L7Z |
| PART_NUM_CA | 7881202 |
| PART_NUM_CA | AAA |
| CUST_CONC_C | S40 |
| COND_CD | 42 |
| RPR_DT | 7/25/2001 |
| TIS_WSD | 4 |
| CLM_KEY | 2830082 |
| MILGE | 4448 |
| MTRL_COST | |
| TOT_COST_GRO | |
| LBR_HRS | |
| DLR_CD | 8834 |
| DLR_SUB_CD | |
| REGION_CD | NA |
| ST_PROV_CD | NV |
| Field27 | c |
| CPSC_CD_6 | 12001 |

| | | |
|---------------------|--|----------------------|
| TECH_TXT1 | SEAT BELT SEAT REPLACE | TRACK ASSEMBLY FRONT |
| TECH_TXT2 | | |
| CUST_TXT | REPAIR PASS FRONT SEAT BELT COMES UNDONE WHILE DRIVING, SOP PART IN | |
| AREA_CD | 702 | |
| COUNTRY_CD | USA | |
| SLS_DLR_CD | 171170 | |
| TXN_CD | 1 | |
| CNTRY_SOLD | USA | |
| QRT_CD | Q21 | |
| VFG_CD | V05 | |
| AWS_VL_CD | B3 | |
| VRT_CD | S08 | |
| TIS_FLAG | | |
| VIN_CD | 1FMEU1SW21[REDACTED] | |
| LRR_COST | [REDACTED] | |
| VEH_LINE_CD | T/03 | |
| MKT_DERIVED | * | |
| BOD_CAB_STL | TWD | |
| VER_SERIES_C | T/EF | |
| DRIVE_CD | T/B | |
| ENG_CD | T/M | |

| | |
|--------------|----------------------|
| ID | 70 |
| MDL_YR | 2001 |
| SORT_INDEX | 373 |
| TRANS_CD | TDE |
| PLANT_CD | AP |
| PRODN_DT | 8/13/2001 |
| WRTY_START_D | 8/8/2001 |
| NAME | ANTELOPE VALLEY FORD |
| DOC_NUM | 8798851 |
| PH_NUM | 8493588 |
| WCC_CD | BR02 |
| PART_NUM_CA | 1L7Z |
| PART_NUM_CA | 7881202 |
| PART_NUM_CA | AAB |
| CUST_CONC_C | T90 |
| COND_CD | 1 |
| RPR_DT | 7/19/2001 |
| TIS_WSD | 0 |
| CLM_KEY | 2753831 |
| MILGE | B |
| MTRL_COST | |
| TOT_COST_GRO | |
| LBR_HRS | |
| DLR_CD | 6428 |
| DLR_SUB_CD | * |
| REGION_CD | NA |
| ST_PROV_CD | CA |
| Field27 | c |
| CPSC_CD_6 | 12001 |

| | |
|---------------------|--|
| TECH_TXT1 | BUCKLE FAILED REPLACED SEAT BELT |
| TECH_TXT2 | |
| CUST_TXT | CUST STATES SEAT BELT BUCKLES COMED UNDONE |
| AREA_CD | B05 |
| COUNTRY_CD | USA |
| SLS_DLR_CD | 171450 |
| TXN_CD | 1 |
| CNTRY_SOLD | USA |
| QRT_CD | Q21 |
| VFG_CD | V74 |
| AWS_VL_CD | B3 |
| VRT_CD | S06 |
| TIS_FLAG | |
| VIN_CD | 1FM6U16L911 |
| LBR_COST | |
| VEH_LINE_CD | T/B3 |
| MKT_DERIVED | |
| BOD_CAB_STL | TWD |
| VER_SERIES_C | TEF |
| DRIVE_CD | T/B |
| ENG_CD | TVZ |

| | |
|---------------------|-------------------|
| ID | 71 |
| MDL_YR | 2001 |
| SORT_INDEX | 375 |
| TRANS_CD | TDE |
| PLANT_CD | AP |
| PRODN_DT | 11/28/2000 |
| WRTY_START_D | 8/14/2001 |
| NAME | BOB WONDRIES FORD |
| DOC_NUM | 241002A |
| PH_NUM | 2883581 |
| WCC_CD | BR02 |
| PART_NUM_CA | 1L7Z |
| PART_NUM_CA | 7851202 |
| PART_NUM_CA | AAA |
| CUST_CONC_C | S40 |
| COND_CD | 42 |
| RPR_DT | 10/18/2001 |
| TIS_WSD | 3 |
| CLM_KEY | 4723118 |
| MILGE | 4987 |
| MTRL_COST | |
| TOT_COST_GRO | |
| LBR_HRS | |
| DLR_CD | 6520 |
| DLR_SUB_CD | |
| REGION_CD | NA |
| ST_PROV_CD | CA |
| Field27 | C |
| CPSC_CD_6 | 12001 |

| | |
|---------------------|--|
| TECH_TXT1 | 4387 ERRATIC SEAT BELT BUCKLE MT 61202 0.8 INSPECTED ERRATIC RT. FRONT SEAT BELT OPERATION REPLACED SEATBELT BUCKLE. |
| TECH_TXT2 | |
| CUST_TXT | CUSTOMER STATES RIGHT FRONT SEAT BELT BUCKLE INOP. SEAT BELT COMES LOOSE WHEN DRIVING |
| AREA_CD | 626 |
| COUNTRY_CD | USA |
| SLS_DLR_CD | 171061 |
| TXN_CD | 1 |
| CNTRY_SOLD | USA |
| QRT_CD | Q21 |
| VFG_CD | V05 |
| AWS_VL_CD | B3 |
| VRT_CD | 908 |
| TIS_FLAG | |
| VIN_CD | 1FMEJ16L81L |
| LBR_COST | |
| VEH_LINE_CD | T/B3 |
| MKT_DERIVED | * |
| BOD_CAB_STL | T/WO |
| VER_SERIES_C | T/EF |
| DRIVE_CD | T/B |
| ENG_CD | T/NZ |

2001 Ranger First Inspection

| | |
|--------------|--------------------|
| ID | 1 |
| MDL_YR | 2001 |
| SORT_INDEX | 8 |
| VIN_CD | 1FTZR16UX1R |
| LBR_COST | |
| VEH_LINE_CD | T/R3 |
| MKT_DERIVED | * |
| BOD_CAB_STL | T/B0 |
| VER_SERIES_C | T/EF |
| DRIVE_CD | T/E |
| ENG_CD | T/LA |
| TRANS_CD | T/TC |
| PLANT_CD | AX |
| PRODN_DT | 4/5/2001 |
| WRTY_START_D | 11/8/2001 |
| NAME | MANKATO FORD, INC. |
| DOC_NUM | 9818151 |
| PH_NUM | 3873464 |
| WCC_CD | BR02 |
| PART_NUM_CA | 1L5Z |
| PART_NUM_CA | 1081202 |
| PART_NUM_CA | AAA |
| CUST_CONC_C | 328 |
| COND_CD | 42 |
| RPR_DT | 3/4/2002 |
| TIS_WSD | 4 |
| CLM_KEY | 7237811 |

Tuesday, December 14, 2004

Page 1 of 558

RQ04-011 E 1476

| | |
|---------------------|---|
| MILGE | 0410 |
| MTRL_COST | |
| TOT_COST_GRO | |
| LBR_HRS | |
| DLR_CD | 1787 |
| DLR_SUB_CD | * |
| REGION_CD | NA |
| ST_PROV_CD | MN |
| Ratings | # |
| CPSC_CD_6 | 11001 |
| TECH_TXT1 | FRONT SEAT BELTS WONT BUCKLE REPLACED BOTH FRONT SEAT BELT BUCKLES |
| TECH_TXT2 | |
| CUST_TXT | PASS SIDE SEAT BELT WILL NOT LATCH CHECK AND ADVISE MIKE |
| AREA_CD | 507 |
| COUNTRY_CD | USA |
| SLS_DLR_CD | 158881 |
| TXN_CD | 1 |
| CNTRY_SOLD | USA |
| QRT_CD | Q21 |
| VFG_CD | V05 |
| AWS_VL_CD | R1 |
| VRT_CD | S08 |
| TIS_FLAG | |

| | |
|--------------|------------------|
| ID | 2 |
| MDL_YR | 2001 |
| SORT_INDEX | 33 |
| VIN_CD | 1FTZR15UB1T |
| LBR_COST | |
| VEH_LINE_CD | TFR3 |
| MKT_DERIVED | * |
| BOD_CAB_STL | T/B0 |
| VER_SERIES_C | T/EF |
| DRIVE_CD | T/E |
| ENG_CD | T/LA |
| TRANS_CD | T/TC |
| PLANT_CD | AG |
| PRODN_DT | 10/31/2000 |
| WRTY_START_D | 1/18/2001 |
| NAME | VERNER-CADBY INC |
| DOC_NUM | 6386001 |
| PH_NUM | 5750333 |
| WCC_CD | 6R02 |
| PART_NUM_CA | 1L5Z |
| PART_NUM_CA | 1081203 |
| PART_NUM_CA | AAA |
| CUST_CONC_C | 826 |
| COND_CD | 42 |
| RPR_DT | 5/3/2002 |
| TIS_WSD | 18 |
| CLM_KEY | 8578243 |
| MILGE | 19404 |
| MTRL_COST | |

| | |
|---------------------|--|
| TOY_COST_GRO | 119,98 |
| LBR_HRS | |
| DLR_CD | 20845 |
| DLR_SUB_CD | |
| REGION_CD | NA |
| ST_PROV_CD | NJ |
| Ratings | 3 |
| CPSC_CD_6 | 11001 |
| TECH_TXT1 | REPLACE BUCKLE ASSY AS NEEDED CHECK OK |
| TECH_TXT2 | |
| CUST_TXT | SEAT BELT WONT LATCH |
| AREA_CD | 873 |
| COUNTRY_CD | USA |
| SLS_DLR_CD | 118042 |
| TXN_CD | EB4 |
| CNTRY_SOLD | USA |
| QRT_CD | Q21 |
| VFG_CD | V05 |
| AWS_VL_CD | R1 |
| VRT_CD | S08 |
| TIS_FLAG | |

| | |
|---------------------|-----------------|
| ID | 3 |
| MDL_YR | 2001 |
| SORT_INDEX | 40 |
| VIN_CD | 1FTZR15U81F |
| LRR_COST | |
| VEH_LINE_CD | T/R3 |
| MKT_DERIVED | * |
| BOD_CAB_STL | T/RD |
| VER_SERIES_C | T/EF |
| DRIVE_CD | T/E |
| ENG_CD | T/LA |
| TRANS_CD | T/TC |
| PLANT_CD | AX |
| PRODN_DT | 11/2/2000 |
| WRTY_START_D | 11/28/2000 |
| NAME | BEST FORD, INC. |
| DOC_NUM | 124887A |
| PH_NUM | 8890151 |
| WCC_CD | 8R02 |
| PART_NUM_CA | 1L5Z |
| PART_NUM_CA | 1091203 |
| PART_NUM_CA | AAA |
| CUST_CONC_C | S25 |
| COND_CD | 41 |
| RPR_DT | 12/19/2001 |
| TIS_WSD | 15 |
| CLM_KEY | 6837349 |
| MILGE | 24859 |
| MTRL_COST | |

| | |
|---------------------|---|
| TOT_COST_GRO | <input type="text" value=""/> |
| LBR_HRS | <input type="text" value=""/> |
| DLR_CD | <input type="text" value="3080"/> |
| DLR_SUB_CD | <input type="text" value=""/> |
| REGION_CD | <input type="text" value="NA"/> |
| ST_PROV_CD | <input type="text" value="NH"/> |
| Ratings | <input type="text" value=""/> |
| CPSC_CD_6 | <input type="text" value="11001"/> |
| TECH_TXT1 | <input type="text" value="TECH 148 REPLACED THE DRIVERS SIDE SEATBELT ASSEMBLY TO REPAIR THE CUSTOMERS CONCERN OF THE SEATBELT NOT LATCHING AS PREVIOUSLY DIAGNOSED AND ORDERED."/> |
| TECH_TXT2 | <input type="text" value=""/> |
| CUST_TXT | <input type="text" value="CUSTOMER STATES DRIVERS SIDE SEAT BELT NOT OPERATING PROPERLY. THE BELT DOES NOT LATCH. INSTALL SOP BELT ASSY."/> |
| AREA_CD | <input type="text" value="605"/> |
| COUNTRY_CD | <input type="text" value="USA"/> |
| SLS_DLR_CD | <input type="text" value="124325"/> |
| TXN_CD | <input type="text" value="EB4"/> |
| CNTRY_SOLD | <input type="text" value="USA"/> |
| QRT_CD | <input type="text" value="Q21"/> |
| VFG_CD | <input type="text" value="V05"/> |
| AWS_VL_CD | <input type="text" value="R1"/> |
| VRT_CD | <input type="text" value="508"/> |
| TIS_FLAG | <input type="text" value=""/> |

| | |
|--------------|----------------------|
| ID | 4 |
| MDL_YR | 2001 |
| SORT_INDEX | 48 |
| VIN_CD | 1FTZR18J81F |
| LBR_COST | |
| VEH_LINE_CD | TR3 |
| MKT_DERIVED | * |
| BOD_CAB_STL | TBD |
| VER_SERIES_C | TIEF |
| DRIVE_CD | TE |
| ENG_CD | TAA |
| TRANS_CD | TRD |
| PLANT_CD | AX |
| PRODN_DT | 10/6/2000 |
| WRTY_START_D | 8/31/2001 |
| NAME | UTAH AUTO COLLECTION |
| DOC_NUM | 49822701 |
| PH_NUM | 8888000 |
| WCC_CD | 8R02 |
| PART_NUM_CA | 115Z |
| PART_NUM_CA | 1061202 |
| PART_NUM_CA | AAA |
| CUST_CONC_C | 840 |
| COND_CD | 41 |
| RPR_DT | 8/1/2001 |
| TIS_WSD | 0 |
| CLM_KEY | 3250805 |
| MILGE | 42 |
| MTRL_COST | |

| | |
|---------------------|--|
| TOT_COST_GRO | 11479 |
| LBR_HRS | 0.0 |
| DLR_CD | 3314 |
| DLR_SUB_CD | * |
| REGION_CD | NA |
| ST_PROV_CD | UT |
| Ratings | a |
| CPSC_CD_6 | 11001 |
| TECH_TXT1 | CK. OPERATION OF PASSENGER FRONT SEAT BELT. IT WOULD NOT OPERATE PROPERLY. REMOVE PASSENGER SEAT TO GAIN ACCESS TO SEAT BELT. REPLACE SEAT BELT. BUCKLE END. REINSTALL SEAT. CK. OPERATION OF SEAT |
| TECH_TXT2 | |
| CUST_TXT | FRONT SEAT BELT LATCH DOESN T WORK SOP |
| AREA_CD | 801 |
| COUNTRY_CD | USA |
| SLS_DLR_CD | 188800 |
| TXN_CD | 2 |
| CNTRY_SOLD | USA |
| QRT_CD | Q21 |
| VFG_CD | V06 |
| AWS_VL_CD | R1 |
| VRT_CD | S08 |
| TIS_FLAG | |

| | |
|--------------|-----------------------|
| ID | 9 |
| MDL_YR | 2001 |
| SORT_INDEX | 45 |
| VIN_CD | 1FTZR15UB1F |
| LBR_COST | |
| VEH_LINE_CD | TR3 |
| MKT_DERIVED | * |
| BOD_CAB_STL | TBD |
| VER_SERIES_C | T/EF |
| DRIVE_CD | T/E |
| ENG_CD | T/LA |
| TRANS_CD | T/TC |
| PLANT_CD | AX |
| PRODN_DT | 8/24/2000 |
| WRTY_START_D | 9/18/2000 |
| NAME | SEXTON FORD SALES INC |
| DOC_NUM | 4401651 |
| PH_NUM | 7973811 |
| WCC_CD | 6R02 |
| PART_NUM_CA | 1L5Z |
| PART_NUM_CA | 10B1208 |
| PART_NUM_CA | AAA |
| CUST_CONC_C | S40 |
| COND_CD | 42 |
| RPR_DT | 1/16/2002 |
| TIS_WSD | 17 |
| CLM_KEY | 6414342 |
| MILGE | 11465 |
| MTRL_COST | |

| | |
|---------------------|------------------------------------|
| TOT_COST_GRO | D421 |
| LBR_HRS | |
| DLR_CD | 20147 |
| DLR_SUB_CD | * |
| REGION_CD | NA |
| ST_PROV_CD | IL |
| Ratings | B |
| CPSC_CD_6 | 11001 |
| TECH_TXT1 | REPLACED SEAT BELT BUCKLW |
| TECH_TXT2 | |
| CUST_TXT | DRIVERS SEAT BELT WILL NOT CONNECT |
| AREA_CD | 309 |
| COUNTRY_CD | USA |
| SLS_DLR_CD | 141201 |
| TXN_CD | EB4 |
| CNTRY_SOLD | USA |
| QRT_CD | Q21 |
| VFG_CD | V05 |
| AWS_VL_CD | R1 |
| VRT_CD | 308 |
| TIS_FLAG | |

| | |
|---------------------|------------------|
| ID | 6 |
| MDL_YR | 2001 |
| SORT_INDEX | 53 |
| VIN_CD | 1FTZR15U71F |
| LBR_COST | |
| VEH_LINE_CD | T/R3 |
| MKT_DERIVED | |
| BOD_CAB_STL | T/BD |
| VER_SERIES_C | T/EF |
| DRIVE_CD | T/E |
| ENG_CD | T/LA |
| TRANS_CD | T/TC |
| PLANT_CD | AX |
| PRODN_DT | 11/15/2000 |
| WRTY_START_D | 1/3/2001 |
| NAME | JOHN MARKE, INC. |
| DOC_NUM | 257073B |
| PH_NUM | 3698700 |
| WCC_CD | 8R02 |
| PART_NUM_CA | 1L5Z |
| PART_NUM_CA | 1081203 |
| PART_NUM_CA | AAA |
| CUST_CONC_C | 828 |
| COND_CD | 42 |
| RPR_DT | 3/29/2002 |
| TIS_WSD | 10 |
| CLM_KEY | 0077114 |
| MILGE | 0181 |
| MTRL_COST | |

| | |
|---------------------|--|
| TOT_COST_GRO | 04.19 |
| LBR_HRS | 04 |
| DLR_CD | 7232 |
| DLR_SUB_CD | * |
| REGION_CD | NA |
| ST_PROV_CD | NE |
| Ratings | a |
| CPSC_CD_6 | 11001 |
| TECH_TXT1 | R AND R DRIVERS SEAT SPLIT BENCH REPLACE SEAT BELTBUCKLE |
| TECH_TXT2 | |
| CUST_TXT | CUSTOMER STATES THAT THE SEATBELT IS NOT LATCHING |
| AREA_CD | 402 |
| COUNTRY_CD | USA |
| SLS_DLR_CD | 153507 |
| TXN_CD | ES4 |
| CNTRY_SOLD | USA |
| QRT_CD | Q21 |
| VFG_CD | V05 |
| AWS_VL_CD | R1 |
| VRT_CD | 808 |
| TIS_FLAG | |

| | |
|--------------|-------------------------------|
| ID | 7 |
| MDL_YR | 2001 |
| SORT_INDEX | 58 |
| VIN_CD | 1FTZR15L71F |
| LBR_COST | |
| VEH_LINE_CD | T/R3 |
| MKT_DERIVED | * |
| BOD_CAB_STL | T/RD |
| VER_SERIES_C | T/EF |
| DRIVE_CD | T/E |
| ENG_CD | T/LA |
| TRANS_CD | T/TC |
| PLANT_CD | AX |
| PRODN_DT | 11/1/2000 |
| WRTY_START_D | 3/3/2001 |
| NAME | EXPRESSWAY FORD-MERCURY, INC. |
| DOC_NUM | 201001 |
| PH_NUM | 6636476 |
| WCC_CD | 6R02 |
| PART_NUM_CA | 1L5Z |
| PART_NUM_CA | 1081202 |
| PART_NUM_CA | AAA |
| CUST_CONC_C | 940 |
| COND_CD | 42 |
| RPR_DT | 4/6/2002 |
| TIS_WSD | 14 |
| CLM_KEY | 8754490 |
| MILGE | 0293 |
| MTRL_COST | |

| | |
|---------------------|--|
| TOT_COST_GRO | 81.8 |
| LBR_HRS | 0.4 |
| DLR_CD | 9213 |
| DLR_SUB_CD | |
| REGION_CD | NA |
| ST_PROV_CD | MN |
| Ratings | |
| CPSC_CD_6 | 11001 |
| TECH_TXT1 | LATCH INOPERATIVE. REPLACED SEAT BELT. |
| TECH_TXT2 | |
| CUST_TXT | PASSENGER SEAT BELT BUCKEL WILL NOT LATCH. |
| AREA_CD | 507 |
| COUNTRY_CD | USA |
| SLS_DLR_CD | 159518 |
| TXN_CD | ES4 |
| CNTRY_SOLD | USA |
| QRT_CD | Q21 |
| VFG_CD | V05 |
| AWS_VL_CD | R1 |
| VRT_CD | S08 |
| TIS_FLAG | |

| | |
|---------------------|----------------------|
| ID | 8 |
| MDL_YR | 2001 |
| SORT_INDEX | 57 |
| VIN_CD | 1FTZR15U71P |
| LBR_COST | |
| VEH_LINE_CD | T/R3 |
| MKT_DERIVED | * |
| BOD_CAR_STL | T/BD |
| VER_SERIES_C | T/EF |
| DRIVE_CD | T/E |
| ENG_CD | T/LA |
| TRANS_CD | T/TC |
| PLANT_CD | AX |
| PRODN_DT | 10/25/2000 |
| WRTY_START_D | 11/30/2000 |
| NAME | ROBERTS MOTORS, INC. |
| DOC_NUM | 153029E |
| PH_NUM | 4687220 |
| WCC_CD | 8R02 |
| PART_NUM_CA | 1L5Z |
| PART_NUM_CA | 1081203 |
| PART_NUM_CA | AAA |
| CUST_CONC_C | 826 |
| COND_CD | 42 |
| RPR_DT | 6/28/2002 |
| TIS_WSD | 18 |
| CLM_KEY | 5822782 |
| MILGE | 31202 |
| MTRL_COST | |

| | |
|---------------------|--|
| TOT_COST_GRO | 100.00 |
| LBR_HRS | |
| DLR_CD | 8001 |
| DLR_SUB_CD | |
| REGION_CD | NA |
| ST_PROV_CD | L |
| Rating | |
| CPSC_CD_6 | 11001 |
| TECH_TXT1 | 31202 CHECKED AND FOUND DRIVER SIDE SEAT BELT RETAINER AT SEAT IS BROKEN WONT LATCH. HAD TO REMOVED DRIVERS SIDE SEAT TO REPLACE BELT ASSY, UNDER SEAT , INSTALLED AND CHECKED OK . |
| TECH_TXT2 | |
| CUST_TXT | DRIVER SIDE SEAT BELT RECEIVER WONT WORK. |
| AREA_CD | 618 |
| COUNTRY_CD | USA |
| SLS_DLR_CD | 163104 |
| TXN_CD | E84 |
| CNTRY_SOLD | USA |
| QRT_CD | Q21 |
| VFG_CD | V05 |
| AWS_VL_CD | R1 |
| VRT_CD | S01 |
| TIS_FLAG | 0 |

| | |
|--------------|------------------------|
| ID | 9 |
| MDL_YR | 2001 |
| SORT_INDEX | 66 |
| VIN_CD | 1FTZR15U817 |
| LBR_COST | |
| VEH_LINE_CD | TFR3 |
| MKT_DERIVED | * |
| BOD_CAB_STL | TBD |
| VER_SERIES_C | TEF |
| DRIVE_CD | TE |
| ENG_CD | T/LA |
| TRANS_CD | T/RQ |
| PLANT_CD | AG |
| PRODN_DT | 11/10/2000 |
| WRTY_START_D | 1/8/2001 |
| NAME | BURT PAQUIN FORD, INC. |
| DOC_NUM | 636801 |
| PH_NUM | 5247343 |
| WCC_CD | BR02 |
| PART_NUM_CA | 1L6Z |
| PART_NUM_CA | 1061203 |
| PART_NUM_CA | AAA |
| CUST_CONC_C | 825 |
| COND_CD | 42 |
| RPR_DT | 11/5/2001 |
| TIS_WSD | 11 |
| CLM_KEY | 5864420 |
| MILGE | 17272 |
| MTRL_COST | |

| | |
|---------------------|--|
| TOT_COST_GRO | 8834 |
| LBR_HRS | 12 |
| DLR_CD | 8841 |
| DLR_SUB_CD | |
| REGION_CD | NA |
| ST_PROV_CD | VT |
| Ratings | B |
| CPSC_CD_6 | 11001 |
| TECH_TXT1 | FORD RECALL REPLACE LEFT FRONT SEAT BUCKLE PER RECALL |
| TECH_TXT2 | |
| CUST_TXT | CUSTOMER STATES SEAT BELT WON T PASS INSPECTION SEE S D PART |
| AREA_CD | 802 |
| COUNTRY_CD | USA |
| SLS_DLR_CD | 111519 |
| TXN_CD | E54 |
| CNTRY_SOLD | USA |
| QRT_CD | Q21 |
| VFG_CD | V06 |
| AWS_VL_CD | R1 |
| VRT_CD | 808 |
| TIS_FLAG | |

| | |
|--------------|-------------------------------|
| ID | 10 |
| MDL_YR | 2001 |
| SORT_INDEX | 71 |
| VIN_CD | 1FTZR15U61F |
| LBR_COST | |
| VEH_LINE_CD | T/R3 |
| MKT_DERIVED | * |
| BOD_CAB_STL | T/B0 |
| VER_SERIES_C | T/EF |
| DRIVE_CD | T/E |
| ENG_CD | T/LA |
| TRANS_CD | T/TC |
| PLANT_CD | AX |
| PRODN_DT | 11/14/2000 |
| WRTY_START_D | 12/4/2000 |
| NAME | NEW CASTLE FORD-LINC-MERC INC |
| DOC_NUM | 0097703 |
| PH_NUM | 0200873 |
| WCC_CD | 0R02 |
| PART_NUM_CA | 1LJZ |
| PART_NUM_CA | 1061202 |
| PART_NUM_CA | AAA |
| CUST_CONC_C | 828 |
| COND_CD | 42 |
| RPR_DT | 3/6/2002 |
| TIS_WSD | 19 |
| CLM_KEY | 7200282 |
| MILGE | 28458 |
| MTRL_COST | |

| | |
|---------------------|--|
| TOT_COST_GRO | 9274 |
| LBR_HRS | 06 |
| DLR_CD | 4788 |
| DLR_SUB_CD | |
| REGION_CD | NA |
| ST_PROV_CD | IN |
| Ratings | |
| CPSC_CD_6 | 11001 |
| TECH_TXT1 | VERIFIED CONCERN FOUND BUCKLE NOT HOLDING WELL. REPLACED BUCKLE AND RETESTED ALL OK CCC 828 CC 42 BASE 1081202 |
| TECH_TXT2 | |
| CUST_TXT | CUST STATS TO CHECK SEATBELT RIGHT SIDE IT IS UNDONE |
| AREA_CD | 785 |
| COUNTRY_CD | USA |
| SLS_DLR_CD | 147104 |
| TXN_CD | EB4 |
| CNTRY_SOLD | USA |
| QRT_CD | Q21 |
| VFG_CD | V06 |
| AWS_VL_CD | R1 |
| VRT_CD | S08 |
| TTS_FLAG | |

| | |
|--------------|--------------------|
| ID | 11 |
| MDL_YR | 2001 |
| SORT_INDEX | 89 |
| VIN_CD | 1FTZR1SUS1F |
| LRR_COST | |
| VEH_LINE_CD | T/R3 |
| MKT_DERIVED | * |
| BOD_CAB_STL | T/RD |
| VER_SERIES_C | T/EF |
| DRIVE_CD | T/E |
| ENG_CD | T/LA |
| TRANS_CD | T/TC |
| PLANT_CD | AX |
| PRODN_DT | 11/14/2000 |
| WRTY_START_D | 1/13/2001 |
| NAME | MANKATO FORD, INC. |
| DOC_NUM | 9413252 |
| PH_NUM | 3873454 |
| WCC_CD | 8R02 |
| PART_NUM_CA | 1L5Z |
| PART_NUM_CA | 1081202 |
| PART_NUM_CA | AAA |
| CUST_CONC_C | 840 |
| COND_CD | 42 |
| RPR_DT | 11/8/2001 |
| TIS_WSD | 10 |
| CLM_KEY | 5002776 |
| MILGE | 12804 |
| MTRL_COST | |

| | |
|---------------------|--|
| TOT_COST_GRO | 81.99 |
| LBR_HRS | 0.00 |
| DLR_CD | 1787 |
| DLR_SUB_CD | |
| REGION_CD | NA |
| ST_PROV_CD | MI |
| Ratings | a |
| CPSC_CD_6 | 11001 |
| TECH_TXT1 | SEAT BELT INOP SEATBELT ASSEMBLY FRONT REPLACE |
| TECH_TXT2 | |
| CUST_TXT | CHECK PASS SIDE SEAT BELT IT WILL NOT LATCH |
| AREA_CD | 807 |
| COUNTRY_CD | USA |
| SLS_DLR_CD | 16881 |
| TXN_CD | E84 |
| CNTRY_SOLD | USA |
| QRT_CD | Q21 |
| VFG_CD | V05 |
| AWS_VL_CD | R1 |
| VRT_CD | 806 |
| TIS_FLAG | |

| | |
|--------------|-------------------------------|
| ID | 12 |
| MDL_YR | 2001 |
| SORT_INDEX | 00 |
| VIN_CD | 1FTZR15U81P |
| LBR_COST | |
| VEH_LINE_CD | TRQ |
| MKT_DERIVED | |
| BOD_CAB_STL | TBD |
| VER_SERIES_C | T/E |
| DRIVE_CD | T/E |
| ENG_CD | T/A |
| TRANS_CD | TRQ |
| PLANT_CD | AX |
| PRODN_DT | 1/6/2001 |
| WRTY_START_D | 11/18/2000 |
| NAME | PHIL LONG FORD OF DENVER, LLC |
| DOC_NUM | 52666003 |
| PH_NUM | 0323873 |
| WCC_CD | BR02 |
| PART_NUM_CA | 1L5Z |
| PART_NUM_CA | 1001202 |
| PART_NUM_CA | AAA |
| CUST_CONC_C | B40 |
| COND_CD | 42 |
| RPR_DT | 1/24/2002 |
| TIS_WSD | 15 |
| CLM_KEY | 8510790 |
| MILGE | 24898 |
| MTRL_COST | |

| | |
|---------------------|--|
| TOT_COST_GRO | 1444 |
| LBR_HRS | 04 |
| DLR_CD | 3130 |
| DLR_SUB_CD | |
| REGION_CD | NA |
| ST_PROV_CD | CO |
| Ratings | b |
| CPSC_CD_6 | 11001 |
| TECH_TXT1 | TESTED BOTH FRONT SEAT BELTS, BOTH FAILED, REPLACED BOTH FRONT SEAT BELT BUCKLES...3017 |
| TECH_TXT2 | |
| CUST_TXT | CUST STATES SEAT BELTS DONT STAY LATCHED. |
| AREA_CD | 303 |
| COUNTRY_CD | USA |
| SLS_DLR_CD | 159005 |
| TXN_CD | E84 |
| CNTRY_SOLD | USA |
| QRT_CD | C21 |
| VFG_CD | V05 |
| AWS_VL_CD | R1 |
| VRT_CD | S08 |
| TIS_FLAG | |

| | |
|---------------------|-------------------|
| ID | 13 |
| MDL_YR | 2001 |
| SORT_INDEX | 101 |
| VIN_CD | 1FTZR15U417 |
| LBR_COST | |
| VEH_LINE_CD | 17R3 |
| MKT_DERIVED | * |
| BOD_CAB_STL | T/BD |
| VER_SERIES_C | T/EF |
| DRIVE_CD | T/E |
| ENG_CD | T/LA |
| TRANS_CD | T/TC |
| PLANT_CD | AG |
| PRODN_DT | 10/18/2000 |
| WRTY_START_D | 1/3/2001 |
| NAME | FORD OF WESTFIELD |
| DOC_NUM | 113058B |
| PH_NUM | 5683000 |
| WCC_CD | 6R02 |
| PART_NUM_CA | 1LEZ |
| PART_NUM_CA | 1061203 |
| PART_NUM_CA | AAA |
| CUST_CONC_C | S40 |
| COND_CD | 1 |
| RPR_DT | 4/15/2002 |
| TIS_WSD | 16 |
| CLM_KEY | 7982388 |
| MILGE | 31390 |
| MTRL_COST | |

| | |
|---------------------|--|
| TOT_COST_GRO | 8334 |
| LBR_HRS | 87 |
| DLR_CD | 158 |
| DLR_SUB_CD | * |
| REGION_CD | NA |
| ST_PROV_CD | MA |
| Ratings | 2 |
| CPSC_CD_6 | 11001 |
| TECH_TXT1 | VERIFIED DRIVERS SEAT BELT NOT BUCKLING INTERNAL PART BROKEN REMOVED AND REPALCED DRIVERS SEAT BELT BUCKLE END |
| TECH_TXT2 | |
| CUST_TXT | CUSTOMER STATES THE DRIVERS SEAT BELT WILL NOT BUCKLE IN |
| AREA_CD | 413 |
| COUNTRY_CD | USA |
| SLS_DLR_CD | 111003 |
| TXN_CD | EB4 |
| CNTRY_SOLD | USA |
| QRT_CD | Q21 |
| VFG_CD | V05 |
| AWS_VL_CD | R1 |
| VRT_CD | S08 |
| TIS_FLAG | |

| | |
|---------------------|------------------|
| ID | 14 |
| MDL_YR | 2001 |
| SORT_INDEX | 100 |
| VIN_CD | 1FTZR15L31T |
| LBR_COST | |
| VEH_LINE_CD | T/R3 |
| MKT_DERIVED | |
| BOD_CAB_STL | T/B0 |
| VER_SERIES_C | T/EF |
| DRIVE_CD | T/E |
| ENG_CD | T/LA |
| TRANS_CD | T/TC |
| PLANT_CD | AG |
| PRODN_DT | 11/1/2000 |
| WRTY_START_D | 11/27/2000 |
| NAME | DE LACY FORD INC |
| DOC_NUM | 0102001 |
| PH_NUM | 0881200 |
| WCC_CD | 0R02 |
| PART_NUM_CA | 1LSZ |
| PART_NUM_CA | 1001203 |
| PART_NUM_CA | AAA |
| CUST_CONC_C | 040 |
| COND_CD | 42 |
| RPR_DT | 01/5/2001 |
| TIS_WSD | 0 |
| CLM_KEY | 3270000 |
| MILGE | 13100 |
| MTRL_COST | |

| | |
|---------------------|---|
| TOT_COST_GRO | 82.18 |
| LBR_HRS | |
| DLR_CD | 818 |
| DLR_SUB_CD | |
| REGION_CD | NA |
| ST_PROV_CD | NY |
| Ratings | 4 |
| CPSC_CD_6 | 11001 |
| TECH_TXT1 | REMOVE SEAT REPLACE DRIVERS SIDE FEMAL SEAT BELT RECHECK ALL OK AT THIS TIME |
| TECH_TXT2 | |
| CUST_TXT | DRIVER SEAR FEMALE END WILL NOT ACCEPT BELT S40 |
| AREA_CD | 710 |
| COUNTRY_CD | USA |
| SLS_DLR_CD | 144122 |
| TXN_CD | 1 |
| CNTRY_SOLD | USA |
| QRT_CD | Q21 |
| VFG_CD | V06 |
| AWS_VL_CD | R1 |
| VRT_CD | 808 |
| TIS_FLAG | |

| | |
|--------------|---------------------------|
| ID | 16 |
| MDL_YR | 2001 |
| SORT_INDEX | 111 |
| VIN_CD | 1FTZR16J81 |
| LBR_COST | |
| VEH_LINE_CD | T/R3 |
| MKT_DERIVED | |
| BOD_CAB_STL | T/RD |
| VER_SERIES_C | T/EF |
| DRIVE_CD | T/E |
| ENG_CD | T/LA |
| TRANS_CD | T/TC |
| PLANT_CD | AG |
| PRODN_DT | 9/27/2000 |
| WRTY_START_D | 10/9/2000 |
| NAME | EMERLING FORD MERCURY INC |
| DOC_NUM | 8178952 |
| PH_NUM | 5924949 |
| WCC_CD | 6R02 |
| PART_NUM_CA | 1L5Z |
| PART_NUM_CA | 1081203 |
| PART_NUM_CA | AAA |
| CUST_CONC_C | B40 |
| COND_CD | 42 |
| RPR_DT | 11/30/2001 |
| TES_WSD | 14 |
| CLM_KEY | 5828062 |
| MILGE | 14281 |
| MTRL_COST | |

| | |
|---------------------|---|
| TOT_COST_GRO | 85.17 |
| LBR_HRS | 04 |
| DLR_CD | 572 |
| DLR_SUB_CD | * |
| REGION_CD | NA |
| ST_PROV_CD | NY |
| Rating | C |
| CPSC_CD_6 | 11001 |
| TECH_TXT1 | SEAT BELT INOPERATIVE SEATBELT ASSEMBLY FRONT REPLACE |
| TECH_TXT2 | |
| CUST_TXT | CUSTOMER STATES DRIVERS SIDE SEAT BELT COMES UNLATCHED |
| AREA_CD | 716 |
| COUNTRY_CD | USA |
| SLS_DLR_CD | 144034 |
| TXN_CD | 2 |
| CNTRY_SOLD | USA |
| QRT_CD | 021 |
| VFG_CD | V05 |
| AWS_VL_CD | R1 |
| VRT_CD | 800 |
| TIS_FLAG | |

| | |
|---------------------|----------------|
| ID | 18 |
| MDL_YR | 2001 |
| SORT_INDEX | 115 |
| VIN_CD | 1FTZR15U91P |
| LBR_COST | |
| VEH_LINE_CD | T/R3 |
| MKT_DERIVED | * |
| BOD_CAB_STL | T/B0 |
| VER_SERIES_C | T/E |
| DRIVE_CD | T/E |
| ENG_CD | T/LA |
| TRANS_CD | T/T/C |
| PLANT_CD | AX |
| PRODN_DT | 11/15/2000 |
| WRTY_START_D | 1/9/2001 |
| NAME | JAY WOLFE FORD |
| DOC_NUM | 228982A |
| PH_NUM | 7338100 |
| WCC_CD | 6R02 |
| PART_NUM_CA | 1L52 |
| PART_NUM_CA | 1081202 |
| PART_NUM_CA | AAA |
| CUST_CONC_C | 825 |
| COND_CD | 1 |
| RPR_DT | 1/25/2002 |
| TIS_WSD | 13 |
| CLM_KEY | 8508678 |
| MILGE | 10885 |
| MTRL_COST | |

| | |
|---------------------|--|
| TOT_COST_GRO | 179.22 |
| LBR_HRS | |
| DLR_CD | 2808 |
| DLR_SUB_CD | |
| REGION_CD | NA |
| ST_PROV_CD | NE |
| Ratings | |
| CPSC_CD_6 | 11001 |
| TECH_TXT1 | 10885 SEAT BUCKLE WAS BROKEN WARR R&R SEAT, R&R SEAT BOTTOM, R&R SEAT CUSHION AND REPLACED BUCKLE NOW BUCKLE LATCHES |
| TECH_TXT2 | |
| CUST_TXT | CUST STATES PASS SEAT BELT BUCKLE WILL NOT LATCH, PART HERE |
| AREA_CD | 402 |
| COUNTRY_CD | USA |
| SLS_DLR_CD | 163023 |
| TXN_CD | E84 |
| CNTRY_SOLD | USA |
| QRT_CD | Q21 |
| VFG_CD | V05 |
| AWS_VL_CD | R1 |
| VRT_CD | S00 |
| TIS_FLAG | |

| | |
|---------------------|-------------|
| ID | 17 |
| MDL_YR | 2001 |
| SORT_INDEX | 117 |
| VIN_CD | 1FTZR15U31F |
| LBR_COST | |
| VEH_LINE_CD | TFR3 |
| MKT_DERIVED | |
| BOD_CAB_STL | TBD |
| VER_SERIES_C | TJEF |
| DRIVE_CD | TIE |
| ENG_CD | TILA |
| TRANS_CD | TTC |
| PLANT_CD | AX |
| PRODN_DT | 11/9/2000 |
| WRTY_START_D | 1/22/2001 |
| NAME | |
| DOC_NUM | 046828A |
| PH_NUM | 3363379 |
| WCC_CD | 6R02 |
| PART_NUM_CA | 1L5Z |
| PART_NUM_CA | 1081202 |
| PART_NUM_CA | AAA |
| CUST_CONC_C | 840 |
| COND_CD | 42 |
| RPR_DT | 1/19/2002 |
| TIS_WSD | 13 |
| CLM_KEY | 0308860 |
| MILGE | 28285 |
| MTRL_COST | |

| | |
|---------------------|--|
| TOT_COST_GRO | |
| LBR_HRS | |
| DLR_CD | 3758 |
| DLR_SUB_CD | |
| REGION_CD | NA |
| ST_PROV_CD | WI |
| Ratings | a |
| CPSC_CD_6 | 11001 |
| TECH_TXT1 | REPLACED PASS FRONT SEAT BELT AS IT WOULD NOT LATCH PROPERLY |
| TECH_TXT2 | |
| CUST_TXT | INSTALL SOP FOR 44470 SEATBELT FOR PASS FRONT IT WAS BAD FROM RECALL |
| AREA_CD | 414 |
| COUNTRY_CD | USA |
| SLS_DLR_CD | 141323 |
| TXN_CD | E84 |
| CNTRY_SOLD | USA |
| QRT_CD | Q21 |
| VFG_CD | V06 |
| AWS_VL_CD | R1 |
| VRT_CD | S05 |
| TIS_FLAG | |

| | |
|---------------------|-----------------|
| ID | 18 |
| MDL_YR | 2001 |
| SORT_INDEX | 119 |
| VIN_CD | 1F1ZR16U91P |
| LBR_COST | |
| VRH_LINE_CD | T/R3 |
| MKT_DERIVED | * |
| BOD_CAB_STL | T/B0 |
| VER_SERIES_C | T/F- |
| DRIVE_CD | T/E |
| ENG_CD | T/LA |
| TRANS_CD | T/TC |
| PLANT_CD | AX |
| PRODN_DT | 10/21/2000 |
| WRTY_START_D | 1/13/2001 |
| NAME | DON AADSEN FORD |
| DOC_NUM | 143388A |
| PH_NUM | 6764420 |
| WCC_CD | 6R02 |
| PART_NUM_CA | 1L5Z |
| PART_NUM_CA | 1081203 |
| PART_NUM_CA | AAA |
| CUST_CONC_C | S40 |
| COND_CD | 42 |
| RPR_DT | 11/28/2001 |
| TIS_WSD | 11 |
| CLM_KEY | 5933300 |
| MILGE | 13545 |
| MTRL_COST | |

| | |
|---------------------|--|
| TOT_COST_GRO | 82.80 |
| LBR_HRS | 8.2 |
| DLR_CD | 8308 |
| DLR_SUB_CD | * |
| REGION_CD | NA |
| ST_PROV_CD | MT |
| Ratings | G |
| CPSC_CD_6 | 11001 |
| TECH_TXT1 | M TIME TO REPLACE SEATBELT BUCKLE,NO TIME LISTED IN SLTS |
| TECH_TXT2 | |
| CUST_TXT | DRIVERS SEATBELT COMES UNHOOKED |
| AREA_CD | 406 |
| COUNTRY_CD | USA |
| SLS_DLR_CD | 174816 |
| TXN_CD | ES4 |
| CNTRY_SOLD | USA |
| QRT_CD | Q21 |
| VFG_CD | V05 |
| AWS_VL_CD | R1 |
| VRT_CD | 808 |
| TIS_FLAG | |

| | |
|--------------|---------------------|
| ID | 19 |
| MDL_YR | 2001 |
| SORT_INDEX | 127 |
| VIN_CD | 1FTZR19L21P |
| LBR_COST | |
| VEH_LINE_CD | T/R3 |
| MKT_DERIVED | * |
| BOD_CAB_STL | T/BD |
| VER_SERIES_C | T/EF |
| DRIVE_CD | T/E |
| ENG_CD | T/LA |
| TRANS_CD | T/TC |
| PLANT_CD | AX |
| PRODN_DT | 11/9/2000 |
| WRTY_START_D | 3/24/2001 |
| NAME | ST. PETER FORD, INC |
| DOC_NUM | 100881A |
| PH_NUM | 8311620 |
| WCC_CD | 6R02 |
| PART_NUM_CA | 1LEZ |
| PART_NUM_CA | 1001202 |
| PART_NUM_CA | AAA |
| CUST_CONC_C | S40 |
| COND_CD | 42 |
| RPR_DT | 9/21/2001 |
| TIS_WSD | 7 |
| CLM_KEY | 3882310 |
| MILGE | 6995 |
| MTRL_COST | |

| | |
|---------------------|---|
| TOT_COST_GRO | 80.86 |
| LBR_HRS | 34 |
| DLR_CD | 2870 |
| DLR_SUB_CD | |
| REGION_CD | NA |
| ST_PROV_CD | MN |
| Rating | b |
| CPSC_CD_6 | 11001 |
| TECH_TXT1 | CHECK SEAT BELT OPERATION.REPLACE RIGHT FRT SEAT BELT. |
| TECH_TXT2 | |
| CUST_TXT | OTHER RESTRAINT TROUBLES THE SEAT BELTS DO NOT STAY ENGAGED |
| AREA_CD | 507 |
| COUNTRY_CD | USA |
| SLS_DLR_CD | 168887 |
| TXN_CD | 2 |
| CNTRY_SOLD | USA |
| QRT_CD | Q21 |
| VFG_CD | V05 |
| AWS_VL_CD | R1 |
| VRT_CD | S08 |
| TIS_FLAG | |

| | |
|---------------------|-------------------------------|
| ID | 20 |
| MDL_YR | 2001 |
| SORT_INDEX | 130 |
| VIN_CD | 1FTZR15R21F |
| LBR_COST | |
| VEH_LINE_CD | T/R3 |
| MKT_DERIVED | * |
| BOD_CAB_STL | T/B0 |
| VER_SERIES_C | T/EF |
| DRIVE_CD | T/E |
| ENG_CD | T/LA |
| TRANS_CD | T/TC |
| PLANT_CD | AX |
| PRODN_DT | 10/19/2000 |
| WRTY_START_D | 10/27/2000 |
| NAME | DAVE SINCLAIR LINCOLN MERCURY |
| DOC_NUM | 27807704 |
| PH_NUM | * |
| WCC_CD | 6R02 |
| PART_NUM_CA | 1L5Z |
| PART_NUM_CA | 1001203 |
| PART_NUM_CA | AAA |
| CUST_CONC_C | 628 |
| COND_CD | 42 |
| RPR_DT | 4/23/2002 |
| TIS_WSD | 18 |
| CLM_KEY | 8261887 |
| MILGE | 8111 |
| MTRL_COST | |

| | |
|---------------------|---|
| TOT_COST_GRO | 01-40 |
| LBR_HRS | 04 |
| DLR_CD | 10801 |
| DLR_SUB_CD | * |
| REGION_CD | NA |
| ST_PROV_CD | MO |
| Ratings | b |
| CPSC_CD_6 | 11001 |
| TECH_TXT1 | CHECK OUT SEAT BELT OPERATION, REPLACE LEFT SIDE SEAT BELT BUCKLE |
| TECH_TXT2 | |
| CUST_TXT | CUSTOMER SAYS DRIVERS SEATBELT WONT STAY LATCHED |
| AREA_CD | * |
| COUNTRY_CD | USA |
| SLS_DLR_CD | 153080 |
| TXN_CD | E84 |
| CNTRY_SOLD | USA |
| QRT_CD | Q21 |
| VFG_CD | V05 |
| AWS_VL_CD | R1 |
| VRT_CD | 808 |
| TIS_FLAG | Ⓢ |

| | |
|---------------------|--------------------|
| ID | 21 |
| MDL_YR | 2001 |
| SORT_INDEX | 138 |
| VIN_CD | 1FT2R16U1T |
| LBR_COST | |
| VEH_LINE_CD | T/R3 |
| MKT_DERIVED | |
| BOD_CAR_STL | T/BD |
| VEH_SERIES_C | T/EF |
| DRIVE_CD | T/E |
| ENG_CD | T/LA |
| TRANS_CD | T/TC |
| PLANT_CD | AG |
| PRODN_DT | 1/9/2001 |
| WRTY_START_D | 6/4/2001 |
| NAME | BURDICK FORD, INC. |
| DOC_NUM | 0252601 |
| PH_NUM | 0687102 |
| WCC_CD | 6R02 |
| PART_NUM_CA | 1L5Z |
| PART_NUM_CA | 1081202 |
| PART_NUM_CA | AAA |
| CUST_CONC_C | 940 |
| COND_CD | 42 |
| RPR_DT | 7/5/2001 |
| TIS_WSD | 2 |
| CLM_KEY | 2215702 |
| MILGE | 600 |
| MTRL_COST | |

| | |
|---------------------|---|
| TOT_COST_GRO | 89.78 |
| LBR_HRS | 0.4 |
| DLR_CD | 507 |
| DLR_SUB_CD | * |
| REGION_CD | NA |
| ST_PROV_CD | NY |
| Ratings | a |
| CPSC_CD_6 | 11001 |
| TECH_TXT1 | SEATBELT DOES NOT BUCKLE PROPERLY/ FAULTY SEATBELT/ REPLACED |
| TECH_TXT2 | |
| CUST_TXT | CUSTOMER STATES SEATBELT ON PASS. SIDE DOESNT ALWAYS LATCH PROPER |
| AREA_CD | 316 |
| COUNTRY_CD | USA |
| SLS_DLR_CD | 115432 |
| TKN_CD | 1 |
| CNTRY_SOLD | USA |
| QRT_CD | Q21 |
| VFG_CD | V06 |
| AWS_VL_CD | R1 |
| VRT_CD | S08 |
| TIS_FLAG | |

| | |
|---------------------|---------------------|
| ID | 22 |
| MDL_YR | 2001 |
| SORT_INDEX | 141 |
| VIN_CD | 1FTZR16U11R |
| LBR_COST | |
| VEH_LINE_CD | T/R3 |
| MKT_DERIVED | * |
| BOD_CAB_STL | T/B0 |
| VER_SERIES_C | T/E |
| DRIVE_CD | T/E |
| ENG_CD | T/LA |
| TRANS_CD | T/TIC |
| PLANT_CD | AX |
| PRODN_DT | 1/8/2001 |
| WRTY_START_D | 6/13/2001 |
| NAME | WALSER MOTORS, INC. |
| DOC_NUM | 14292301 |
| PH_NUM | 9255500 |
| WCC_CD | 0R02 |
| PART_NUM_CA | 1L5Z |
| PART_NUM_CA | 1081202 |
| PART_NUM_CA | AAA |
| CUST_CONC_C | 826 |
| COND_CD | 42 |
| RPR_DT | 5/28/2002 |
| TIS_WSD | 12 |
| CLM_KEY | 8898162 |
| MILGE | 12378 |
| MTRL_COST | |

| | |
|---------------------|---|
| TOT_COST_GRO | 8094 |
| LBR_HRS | 024 |
| DLR_CD | 9250 |
| DLR_SUB_CD | |
| REGION_CD | NA |
| ST_PROV_CD | MN |
| Ratings | 0 |
| CPSC_CD_6 | 11001 |
| TECH_TXT1 | INSPECTED AND TAKE R.F. SEAT OUT R R BUCKEL |
| TECH_TXT2 | |
| CUST_TXT | PASS SEATBELT BUCKLE COMES DISCONNECTED ON ITS OWN (DID HAPPEN FOR SERVICE ADMSCR IN SERVICE DRIVE) |
| AREA_CD | 952 |
| COUNTRY_CD | USA |
| SLS_DLR_CD | 159007 |
| TXN_CD | E54 |
| CNTRY_SOLD | USA |
| QRT_CD | Q21 |
| VFG_CD | V06 |
| AWS_VL_CD | R1 |
| VRT_CD | S08 |
| TIS_FLAG | Q |

| | |
|---------------------|---------------------|
| ID | 23 |
| MDL_YR | 2001 |
| SORT_INDEX | 146 |
| VIN_CD | 1FTZR15U11F |
| LRR_COST | |
| VEH_LINE_CD | T/R3 |
| MKT_DERIVED | |
| BOD_CAB_STL | T/RD |
| VER_SERIES_C | T/EF |
| DRIVE_CD | T/E |
| ENG_CD | T/LA |
| TRANS_CD | T/TIC |
| PLANT_CD | AX |
| PRODN_DT | 11/21/2000 |
| WRTY_START_D | 2/28/2001 |
| NAME | LANDMARK FORD, INC. |
| DOC_NUM | 10510302 |
| PH_NUM | 0625200 |
| WCC_CD | BR02 |
| PART_NUM_CA | 1L5Z |
| PART_NUM_CA | 1061203 |
| PART_NUM_CA | AAA |
| CUST_CONC_C | S26 |
| COND_CD | 42 |
| RPR_DT | 3/12/2002 |
| TIS_WSD | 13 |
| CLM_KEY | 7451528 |
| MILGR | 22003 |
| MTRL_COST | |

| | |
|---------------------|--|
| TOT_COST_GRO | 10000 |
| LEA_HRS | |
| DLR_CD | 8007 |
| DLR_SUB_CD | |
| REGION_CD | NA |
| ST_PROV_CD | IL |
| Ratings | A |
| CPSC_CD_6 | 11001 |
| TECH_TXT1 | INSPECTED AND REMOVED DRIVER SEAT TO ACCESS AND RPLCE SEAT BELT BUCKLE |
| TECH_TXT2 | |
| CUST_TXT | BUCKLE ON DRIVER SEAT BROKE WONT LATCH |
| AREA_CD | 217 |
| COUNTRY_CD | USA |
| SLS_DLR_CD | 141105 |
| TXN_CD | EM4 |
| CNTRY_SOLD | USA |
| QRT_CD | Q21 |
| VFG_CD | V06 |
| AWS_VL_CD | R1 |
| VRT_CD | 808 |
| TIS_FLAG | |

| | |
|---------------------|---------------------------|
| ID | 24 |
| MDL_YR | 2001 |
| SORT_INDEX | 147 |
| VIN_CD | 1FTZR15J11P |
| LBR_COST | |
| VEH_LINE_CD | T/R3 |
| MKT_DERIVED | * |
| BOD_CAB_STL | T/RD |
| VER_SERIES_C | T/EF |
| DRIVE_CD | T/E |
| ENG_CD | T/A |
| TRANS_CD | T/TC |
| PLANT_CD | AX |
| PRODN_DT | 11/8/2000 |
| WRTY_START_D | 12/28/2000 |
| NAME | BOB TURNER'S FORD COUNTRY |
| DOC_NUM | 26354401 |
| PH_NUM | 766600 |
| WCC_CD | BR02 |
| PART_NUM_CA | 1L5Z |
| PART_NUM_CA | 1081202 |
| PART_NUM_CA | AAA |
| CUST_CONC_C | S25 |
| COND_CD | 33 |
| RPR_DT | 8/8/2001 |
| TIS_WSD | a |
| CLM_KEY | 4068028 |
| MILGE | 8684 |
| MTRL_COST | |

| | |
|---------------------|---|
| TOT_COST_GRO | 84.8 |
| LBR_HRS | 04 |
| DLR_CD | 20351 |
| DLR_SUB_CD | * |
| REGION_CD | NA |
| ST_PROV_CD | NM |
| Ratings | b |
| CPSC_CD_6 | 11001 |
| TECH_TXT1 | REMOVED AND REPLACED PASSANGER SIDE SEAT BELT |
| TECH_TXT2 | |
| CUST_TXT | CUSTOMER REPORTS PASS SIDE SEAT BELT WONT STAY LATCHED 0321 |
| AREA_CD | 605 |
| COUNTRY_CD | USA |
| SLS_DLR_CD | 165302 |
| TXN_CD | 2 |
| CNTRY_SOLD | USA |
| QRT_CD | Q21 |
| VFG_CD | V05 |
| AWS_VL_CD | R1 |
| VRT_CD | S08 |
| TIS_FLAG | |

| | |
|---------------------|-------------------------------|
| ID | 25 |
| MDL_YR | 2001 |
| SORT_INDEX | 140 |
| VIN_CD | 1FTZR15J11F |
| LBR_COST | |
| VEH_LINE_CD | T/R3 |
| MKT_DERIVED | |
| BOD_CAB_STL | T/RD |
| VER_SERIES_C | T/EF |
| DRIVE_CD | T/E |
| ENG_CD | T/LA |
| TRANS_CD | T/RQ |
| PLANT_CD | AX |
| PRODN_DT | 11/1/2000 |
| WRTY_START_D | 11/15/2000 |
| NAME | PHIL LONG FORD OF DENVER, LLC |
| DOC_NUM | 51700601 |
| PH_NUM | 9323673 |
| WCC_CD | BR02 |
| PART_NUM_CA | 1L5Z |
| PART_NUM_CA | 1081208 |
| PART_NUM_CA | AAA |
| CUST_CONC_C | 340 |
| COND_CD | 42 |
| RPR_DT | 11/24/2001 |
| TIS_WSD | 13 |
| CLM_KEY | 5332521 |
| MILGE | 18584 |
| MTRL_COST | |

| | |
|---------------------|--|
| TOT_COST_GRO | 815 |
| LBR_HRS | |
| DLR_CD | 3130 |
| DLR_SUB_CD | |
| REGION_CD | NA |
| ST_PROV_CD | CO |
| Ratings | b |
| CPSC_CD_6 | 11001 |
| TECH_TXT1 | REPLACED SEAT BELT BUCKLE PER RECALL 01S21 3399 |
| TECH_TXT2 | |
| CUST_TXT | INSTALL SEAT BELT BUCKLE DRIVERS SEAT FOR 01S21 RECALL BUCKLE WONT HOLD |
| AREA_CD | 303 |
| COUNTRY_CD | USA |
| SLS_DLR_CD | 156002 |
| TXN_CD | EB4 |
| CNTRY_SOLD | USA |
| QRT_CD | Q21 |
| VFG_CD | V05 |
| AWS_VL_CD | R1 |
| VRT_CD | S08 |
| TIS_FLAG | |

| | |
|---------------------|-----------------------|
| ID | 26 |
| MDL_YR | 2001 |
| SORT_INDEX | 157 |
| VIN_CD | 1FTZR15J01T |
| LBR_COST | |
| VEH_LINE_CD | T/R3 |
| MKT_DERIVED | * |
| BOD_CAB_STL | T/RD |
| VER_SERIES_C | T/EF |
| DRIVE_CD | T/E |
| ENG_CD | T/LA |
| TRANS_CD | T/TG |
| PLANT_CD | AG |
| PRODN_DT | 11/1/2000 |
| WRTY_START_D | 11/7/2000 |
| NAME | TOM HOLZER FORD, INC. |
| DOC_NUM | 121150A |
| PH_NUM | 4741234 |
| WCC_CD | 6R02 |
| PART_NUM_CA | 1L5Z |
| PART_NUM_CA | 1081203 |
| PART_NUM_CA | AAA |
| CUST_CONC_C | 826 |
| COND_CD | 42 |
| RPR_DT | 2/22/2002 |
| TIS_WSD | 16 |
| CLM_KEY | 7385768 |
| MILGE | 12067 |
| MTRL_COST | |

Tuesday, December 14, 2004

Page 51 of 538

RQ04-011 E 1528

| | |
|---------------------|---|
| TOT_COST_GRO | 19829 |
| LBR_HRS | |
| DLR_CD | 2709 |
| DLR_SUB_CD | |
| REGION_CD | NA |
| ST_PROV_CD | MI |
| Ratings | a |
| CPSC_CD_6 | 11001 |
| TECH_TXT1 | 12867 RECALL TEST R&R LEFT FRONT SEAT BELT BUCKLE |
| TECH_TXT2 | |
| CUST_TXT | W 01S21 PARTS HERE |
| AREA_CD | 248 |
| COUNTRY_CD | USA |
| SLS_DLR_CD | 148030 |
| TXN_CD | E84 |
| CNTRY_SOLD | USA |
| QRT_CD | Q21 |
| VFG_CD | V05 |
| AWS_VL_CD | R1 |
| VRT_CD | 808 |
| TIS_FLAG | |

| | |
|--------------|--------------------------------|
| ID | 27 |
| MDL_YR | 2001 |
| SORT_INDEX | 158 |
| VIN_CD | 1FTZR1BJ01T |
| LBR_COST | |
| VEH_LINE_CD | T/R3 |
| MKT_DERIVED | * |
| BOD_CAB_STL | T/B0 |
| VER_SERIES_C | T/EF |
| DRIVE_CD | T/E |
| ENG_CD | T/A |
| TRANS_CD | T/TC |
| PLANT_CD | AG |
| PRODN_DT | 11/22/2000 |
| WRTY_START_D | 1/19/2001 |
| NAME | CROWN FORD LINCOLN MERCURY, IN |
| DOC_NUM | 12243801 |
| PH_NUM | 3888525 |
| WCC_CD | 6R02 |
| PART_NUM_CA | 1L5Z |
| PART_NUM_CA | 1001202 |
| PART_NUM_CA | AAA |
| CUST_CONC_C | 840 |
| COND_CD | 42 |
| RPR_DT | 3/13/2002 |
| TIS_WSD | 14 |
| CLM_KEY | 7388427 |
| MILGE | 9823 |
| MTRL_COST | |

| | |
|---------------------|---|
| TOT_COST_GRO | 9036 |
| LBR_HRS | 05 |
| DLR_CD | 2299 |
| DLR_SUB_CD | * |
| REGION_CD | NA |
| ST_PROV_CD | OH |
| Ratings | c |
| CPSC_CD_6 | 11001 |
| TECH_TXT1 | REPL BUCKLE R & R RT SEAT TO REPL |
| TECH_TXT2 | |
| CUST_TXT | CUST STATES RT FT SEAT BELT KEEPS POPING UN DONE |
| AREA_CD | 330 |
| COUNTRY_CD | USA |
| SLS_DLR_CD | 144219 |
| TXN_CD | E84 |
| CNTRY_SOLD | USA |
| QRT_CD | Q21 |
| VFG_CD | V05 |
| AWS_VL_CD | R1 |
| VRT_CD | 906 |
| TIS_FLAG | |

| | |
|--------------|------------------------------|
| ID | 28 |
| MDL_YR | 2001 |
| SORT_INDEX | 181 |
| VIN_CD | 1FTZR15U01T |
| LBR_COST | |
| VEH_LINE_CD | TFR3 |
| MKY_DERIVED | |
| BOD_CAB_STL | TBD |
| VER_SERIES_C | TBF |
| DRIVE_CD | T/E |
| ENG_CD | T/A |
| TRANS_CD | TTC |
| PLANT_CD | AG |
| PRODN_DT | 9/27/2000 |
| WRTY_START_D | 4/1/2001 |
| NAME | TOM DENCHEL FORD COUNTRY INC |
| DOC_NUM | 7428861 |
| PH_NUM | 7882155 |
| WCC_CD | 9R02 |
| PART_NUM_CA | 1LSZ |
| PART_NUM_CA | 1081203 |
| PART_NUM_CA | AAA |
| CUST_CONC_C | 340 |
| COND_CD | 42 |
| RPR_DT | 1/30/2002 |
| TIS_WSD | 10 |
| CLM_KEY | 6787367 |
| MILGE | 20003 |
| MTRL_COST | |

| | |
|---------------------|---|
| TOT_COST_GRO | 0333 |
| LBR_HRS | 0.4 |
| DLR_CD | 8031 |
| DLR_SUB_CD | |
| REGION_CD | NA |
| ST_PROV_CD | WA |
| Ratings | |
| CPSC_CD_6 | 11001 |
| TECH_TXT1 | FOUND THAT DRIVERS BUCKLE WOULD NOT LATCH REPLACED WITH NEW BUCKEL |
| TECH_TXT2 | |
| CUST_TXT | CUSTOMER STATES THE LEFT FRONT SEATBELT BUCKLE DOES NOT WORK |
| AREA_CD | 808 |
| COUNTRY_CD | USA |
| SLS_DLR_CD | 174484 |
| TXN_CD | EB4 |
| CNTRY_SOLD | USA |
| QRT_CD | Q21 |
| VFG_CD | V05 |
| AWS_VL_CD | R1 |
| VRT_CD | S08 |
| TIS_FLAG | |

| | |
|---------------------|----------------------|
| ID | 28 |
| MDL_YR | 2001 |
| SORT_INDEX | 162 |
| VIN_CD | 1FTZR15L01P |
| LBR_COST | |
| VEH_LINE_CD | T/R3 |
| MKT_DERIVED | * |
| BOD_CAB_STL | T/R0 |
| VER_SERIES_C | T/R F |
| DRIVE_CD | T/E |
| ENG_CD | T/LA |
| TRANS_CD | T/T C |
| PLANT_CD | AX |
| PRODN_DT | 4/10/2001 |
| WRTY_START_D | 6/28/2001 |
| NAME | LITHIA FORD OF BOISE |
| DOC_NUM | 181177A |
| PH_NUM | 3428811 |
| WCC_CD | 8R02 |
| PART_NUM_CA | 1L6Z |
| PART_NUM_CA | 1081202 |
| PART_NUM_CA | AAA |
| CUST_CONC_C | 840 |
| COND_CD | 42 |
| RPR_DT | 9/6/2001 |
| TIS_WSD | 4 |
| CLM_KEY | 3487173 |
| MILGE | 3126 |
| MTRL_COST | |

| | |
|---------------------|--|
| TOT_COST_GRO | 128.43 |
| LBR_HRS | |
| DLR_CD | 3887 |
| DLR_SUB_CD | * |
| REGION_CD | NA |
| ST_PROV_CD | 10 |
| Ratings | a |
| CPSC_CD_6 | 11001 |
| TECH_TXT1 | 3126 PASSANGER SEABELT WONT LATH WATRRANTY CONFIRMED PASSANGER BEATBELT WONT LATCH. REMOVED PASSANGER BEAT AND DISABLED SRS. DISCONNECTED BATT. REPLACED SEATBELT ON PASBANGER SIDE. REINSTALLED SEA |
| TECH_TXT2 | T AND RECONNECT WIRING. |
| CUST_TXT | CUSTOMER STATES THAT THE DRIVERS SEATBELT BUCKLE WILL NOT HOLD. SOP |
| ARKA_CD | 208 |
| COUNTRY_CD | USA |
| SLS_DLR_CD | 158583 |
| TXN_CD | 1 |
| CNTRY_SOLD | USA |
| QRT_CD | Q21 |
| VFG_CD | V05 |
| AWS_VL_CD | R1 |
| VRT_CD | 808 |
| TIS_FLAG | |

| | |
|--------------|--------------------------------|
| ID | 30 |
| MDL_YR | 2001 |
| SORT_INDEX | 163 |
| VIN_CD | 1FTZR15L01P |
| LBR_COST | |
| VEH_LINE_CD | TFR3 |
| MKT_DERIVED | |
| BOD_CAB_STL | TBD |
| VER_SERIES_C | T/EF |
| DRIVE_CD | T/E |
| ENG_CD | T/LA |
| TRANS_CD | T/TC |
| PLANT_CD | AX |
| PRODN_DT | 4/10/2001 |
| WRTY_START_D | 8/18/2001 |
| NAME | GLENWOOD SPRINGS FORD-LIN-MER. |
| DOC_NUM | 8843601 |
| PH_NUM | 8452317 |
| WCC_CD | 8F02 |
| PART_NUM_CA | 1L5Z |
| PART_NUM_CA | 1061202 |
| PART_NUM_CA | AAA |
| CUST_CONC_C | 540 |
| COND_CD | 42 |
| RPR_DT | 7/27/2001 |
| TIS_WSD | 2 |
| CLM_KEY | 2659099 |
| MILGE | 1730 |
| MTRL_COST | |

| | |
|---------------------|--|
| TOT_COST_GRO | 147.10 |
| LBR_HRS | 1.1 |
| DLR_CD | 3172 |
| DLR_SUB_CD | . |
| REGION_CD | NA |
| ST_PROV_CD | CO |
| Ratings | b |
| CPSC_CD_6 | 11001 |
| TECH_TXT1 | PREVIOUS DIAG R&R LH SEAT AND SEAT BELT BUCKLE. TEST AND VERIFY FIX. |
| TECH_TXT2 | |
| CUST_TXT | CUSTOMER STATES THAT VEHICLE'S PSGR SIDE SEAT BELT IS NOT STAYING HOOKED. PART ON ORDER. |
| AREA_CD | B70 |
| COUNTRY_CD | USA |
| SLS_DLR_CD | 158483 |
| TXN_CD | 1 |
| CNTRY_SOLD | USA |
| QRT_CD | Q21 |
| VFG_CD | V05 |
| AWS_VL_CD | R1 |
| VRT_CD | S08 |
| TIS_FLAG | |

| | |
|---------------------|-----------------------|
| ID | 31 |
| MDL_YR | 2001 |
| SORT_INDEX | 194 |
| VIN_CD | 1FTZR1BJ01P |
| LBR_COST | |
| VEH_LINE_CD | T/R3 |
| MKT_DERIVED | * |
| BOD_CAB_STL | T/B0 |
| VER_SERIES_C | T/EF |
| DRIVE_CD | T/E |
| ENG_CD | T/LA |
| TRANS_CD | T/T0 |
| PLANT_CD | AX |
| PRODN_DT | 12/11/2000 |
| WRTY_START_D | 3/8/2001 |
| NAME | SEXTON FORD SALES INC |
| DOC_NUM | 4383251 |
| PH_NUM | 7873811 |
| WCC_CD | 6R02 |
| PART_NUM_CA | 1L5Z |
| PART_NUM_CA | 1061202 |
| PART_NUM_CA | AAA |
| CUST_CONC_C | B40 |
| COND_CD | 42 |
| RPR_DT | 1/8/2002 |
| TIS_WSD | 11 |
| CLM_KEY | 0211368 |
| MILGE | 12231 |
| MTRL_COST | |

Tuesday, December 14, 2004

Page 61 of 538

| | |
|---------------------|---------------------------------|
| TOT_COST_GRO | 5421 |
| LBR_HRS | 194 |
| DLR_CD | 20147 |
| DLR_SUB_CD | |
| REGION_CD | NA |
| ST_PROV_CD | IL |
| Ratings | a |
| CPSC_CD_6 | 11001 |
| TECH_TXT1 | REPL PASSENGER SEAT BELT BUCKLE |
| TECH_TXT2 | |
| CUST_TXT | FRT SEAT BELTS WONT LATCH |
| AREA_CD | 308 |
| COUNTRY_CD | USA |
| SLS_DLR_CD | 153398 |
| TXN_CD | EB4 |
| CNTRY_SOLD | USA |
| QRT_CD | Q21 |
| VFG_CD | V05 |
| AWS_VL_CD | R1 |
| VRT_CD | S08 |
| TIS_FLAG | |

| | |
|---------------------|---------------------------|
| ID | 32 |
| MDL_YR | 2001 |
| SORT_INDEX | 170 |
| VIN_CD | 1FTZR16U01P |
| LBR_COST | |
| VEH_LINE_CD | T/R3 |
| MKT_DERIVED | * |
| BOD_CAB_STL | T/B0 |
| VER_SERIES_C | T/EF |
| DRIVE_CD | T/E |
| ENG_CD | T/LA |
| TRANS_CD | T/T0 |
| PLANT_CD | AX |
| PRODN_DT | 11/9/2000 |
| WRTY_START_D | 12/22/2000 |
| NAME | EINSPAHR AUTO PLAZA, INC. |
| DOC_NUM | 9880001 |
| PH_NUM | 6826106 |
| WCC_CD | 6R02 |
| PART_NUM_CA | 1L5Z |
| PART_NUM_CA | 10812B3 |
| PART_NUM_CA | AAA |
| CUST_CONC_C | S40 |
| COND_CD | 42 |
| RPR_DT | 8/8/2001 |
| TIS_WSD | 8 |
| CLM_KEY | 3030052 |
| MILGE | 6534 |
| MTRL_COST | |

| | |
|---------------------|---|
| TOT_COST_GRO | 8838 |
| LRR_HRS | 90 |
| DLR_CD | 7184 |
| DLR_SUB_CD | |
| REGION_CD | NA |
| ST_PROV_CD | SD |
| Ratings | B |
| CPSC_CD_6 | 11001 |
| TECH_TXT1 | 1 INSPECTED SEAT BELTS, REMOVED AND REPLACED LEFT FRONT SEAT BELT BUCKLE. |
| TECH_TXT2 | |
| CUST_TXT | CUSTOMER STATES DRIVERS SEAT BELT NOT LATCHING |
| AREA_CD | 005 |
| COUNTRY_CD | USA |
| SLS_DLR_CD | 158700 |
| TXN_CD | 1 |
| CNTRY_SOLD | USA |
| QRT_CD | Q21 |
| VFG_CD | V05 |
| AWS_VL_CD | R1 |
| VRT_CD | S08 |
| TIS_FLAG | |

| | |
|---------------------|-------------------------------|
| ID | 33 |
| MDL_YR | 2001 |
| SORT_INDEX | 180 |
| VIN_CD | 1FTZR16EX1T |
| LBR_COST | |
| VEH_LINE_CD | T/R3 |
| MKT_DERIVED | * |
| BOD_CAB_STL | T/RD |
| VER_SERIES_C | T/EF |
| DRIVE_CD | T/E |
| ENG_CD | T/NE |
| TRANS_CD | T/TG |
| PLANT_CD | AG |
| PRODN_DT | 4/17/2001 |
| WRTY_START_D | 6/15/2001 |
| NAME | LONG-LEWIS FORD OF THE SHOALS |
| DOC_NUM | 15405302 |
| PH_NUM | 3887800 |
| WCC_CD | BR02 |
| PART_NUM_CA | 1LSZ |
| PART_NUM_CA | 1081203 |
| PART_NUM_CA | AAA |
| CUST_CONC_C | S28 |
| COND_CD | 42 |
| RPR_DT | 3/20/2002 |
| TIS_WSD | 10 |
| CLM_KEY | 8163150 |
| MILGE | 23938 |
| MTRL_COST | |

| | |
|---------------------|---|
| TOT_COST_GRO | 89.25 |
| LBR_HRS | 0.4 |
| DLR_CD | 1001 |
| DLR_SUB_CD | |
| REGION_CD | NA |
| ST_PROV_CD | AL |
| Ratings | C |
| CPSC_CD_6 | 11001 |
| TECH_TXT1 | DIAG AND REPLACED SEAT BELT. DRIVER SIDE |
| TECH_TXT2 | |
| CUST_TXT | DRIVER SEAT BELT COMES UNLATCHED SOMETIMES, HAS ALREADY BEEN REPLACED ONCE |
| AREA_CD | 250 |
| COUNTRY_CD | USA |
| SLS_DLR_CD | 121111 |
| TXN_CD | E94 |
| CNTRY_SOLD | USA |
| QRT_CD | Q21 |
| VFG_CD | V05 |
| AWS_VL_CD | R1 |
| VRT_CD | S06 |
| TIS_FLAG | |

| | |
|---------------------|-----------------------------|
| ID | 34 |
| MDL_YR | 2001 |
| SORT_INDEX | 181 |
| VIN_CD | 1FTZR16EX1T [REDACTED] |
| LBR_COST | [REDACTED] |
| VEH_LINE_CD | T1R3 |
| MKT_DERIVED | * |
| BOD_CAB_STL | T1R3 |
| VER_SERIES_C | T1EF |
| DRIVE_CD | T1E |
| ENG_CD | T1NE |
| TRANS_CD | T1TC |
| PLANT_CD | AG |
| PRODN_DT | 4/20/2001 |
| WRTY_START_D | 6/12/2001 |
| NAME | GRAND TRAVERSE AUTO COMPANY |
| DOC_NUM | 13121201 |
| PH_NUM | 0222000 |
| WCC_CD | 0R02 |
| PART_NUM_CA | 1L5Z |
| PART_NUM_CA | 1061203 |
| PART_NUM_CA | AAA |
| CUST_CONC_C | S28 |
| COND_CD | 42 |
| RPR_DT | 3/8/2002 |
| TIS_WSD | 9 |
| CLM_KEY | 7877245 |
| MILGE | 12081 |
| MTRL_COST | [REDACTED] |

| | |
|---------------------|---|
| TOT_COST_GRO | 38.00 |
| LBR_HRS | |
| DLR_CD | 9008 |
| DLR_SUB_CD | |
| REGION_CD | NA |
| ST_PROV_CD | MI |
| Ratings | a |
| CPSC_CD_6 | 11001 |
| TECH_TXT1 | REPLACED DRIVERS SEATBELT RECEPTACLE. |
| TECH_TXT2 | |
| CUST_TXT | PASSENGER SIDE SEAT BELT WILL NOT LATCH INTERMITTENT |
| AREA_CD | 231 |
| COUNTRY_CD | USA |
| SLS_DLR_CD | 148044 |
| TXN_CD | EB4 |
| CNTRY_SOLD | USA |
| QRT_CD | Q21 |
| VFG_CD | V06 |
| AWS_VL_CD | R1 |
| VRT_CD | 308 |
| TIS_FLAG | |

| | |
|---------------------|-------------------------|
| ID | 35 |
| MDL_YR | 2001 |
| SORT_INDEX | 183 |
| VIN_CD | 1FTZR15EX17 |
| LRR_COST | |
| VEH_LINE_CD | T/R3 |
| MKT_DERIVED | * |
| BOD_CAB_STL | T/ED |
| VER_SERIES_C | T/EF |
| DRIVE_CD | T/E |
| ENG_CD | T/NE |
| TRANS_CD | T/TC |
| PLANT_CD | AG |
| PRODN_DT | 3/27/2001 |
| WRTY_START_D | 6/18/2001 |
| NAME | DAVE HALLMAN FORD, INC. |
| DOC_NUM | 4285401 |
| PH_NUM | 7341818 |
| WCC_CD | 8R02 |
| PART_NUM_CA | 1L32 |
| PART_NUM_CA | 108120Z |
| PART_NUM_CA | AAA |
| CUST_CONC_C | 840 |
| COND_CD | 42 |
| RPR_DT | 7/11/2001 |
| TIS_WSD | 1 |
| CLM_KEY | 2298894 |
| MILGE | 630 |
| MTRL_COST | |

Tuesday, December 14, 2004

Page 68 of 558

RQ04-011 E 1644

| | |
|---------------------|--|
| TOT_COST_GRO | 8079 |
| LBR_HRS | 0.4 |
| DLR_CD | 2184 |
| DLR_SUB_CD | |
| REGION_CD | NA |
| ST_PROV_CD | PA |
| Ratings | c |
| CPSC_CD_6 | 11001 |
| TECH_TXT1 | REPLACED PASSENGER SIDE SEATBELT. |
| TECH_TXT2 | |
| CUST_TXT | PASS SIDE SEAT BELT BUCKLE KEEPS COMING UN LATCHED |
| AREA_CD | 814 |
| COUNTRY_CD | USA |
| SLS_DLR_CD | 144800 |
| TXN_CD | 1 |
| CNTRY_SOLD | USA |
| QRT_CD | Q21 |
| VFG_CD | V05 |
| AWS_VL_CD | R1 |
| VRT_CD | S08 |
| TIS_FLAG | |

| | |
|---------------------|----------------------|
| ID | 38 |
| MDL_YR | 2001 |
| SORT_INDEX | 186 |
| VIN_CD | 1FTZR16EX1T |
| LBR_COST | |
| VEH_LINE_CD | T/RS |
| MKT_DERIVED | * |
| BOD_CAB_STL | T/BD |
| VER_SERIES_C | T/EF |
| DRIVE_CD | T/E |
| ENG_CD | T/NE |
| TRANS_CD | T/TC |
| PLANT_CD | AG |
| PRODN_DT | 4/17/2001 |
| WRKY_START_D | 5/10/2001 |
| NAME | FALL MOUNTAIN MOTORS |
| DOC_NUM | 735803 |
| PH_NUM | 4633971 |
| WCC_CD | 6R02 |
| PART_NUM_CA | 1L6Z |
| PART_NUM_CA | 1081203 |
| PART_NUM_CA | AAA |
| CUST_CONC_C | 940 |
| COND_CD | 42 |
| RPR_DT | 11/7/2001 |
| TIS_WSD | 7 |
| CLM_KEY | 8081154 |
| MILGE | 11280 |
| MTRL_COST | |

| | |
|---------------------|--|
| TOT_COST_GRO | 87.12 |
| LBR_HRS | 0.7 |
| DLR_CD | 3807 |
| DLR_SUB_CD | |
| REGION_CD | NA |
| ST_PROV_CD | VT |
| Ratings | b |
| CPSC_CD_6 | 11001 |
| TECH_TXT1 | L F SEAT BELT RECALL L F SEAT BELT NOT HOLDING; REPLACED L F SEAT BELT, HAD TO REMOVE SEAT OUT OF VEH. TO INSTALL NEW SEAT BELT. |
| TECH_TXT2 | |
| CUST_TXT | INSTALL S O SEATBELT |
| AREA_CD | 802 |
| COUNTRY_CD | USA |
| SLS_DLR_CD | 111682 |
| TXN_CD | 2 |
| CNTRY_SOLD | USA |
| QRT_CD | Q21 |
| VFG_CD | V05 |
| AWS_VL_CD | R1 |
| VRT_CD | S08 |
| TIS_FLAG | |

| | |
|---------------------|-------------------------|
| ID | 37 |
| MDL_YR | 2001 |
| SORT_INDEX | 100 |
| VIN_CD | 1FTZR15EX1T |
| LBR_COST | |
| VEH_LINE_CD | TR3 |
| MKT_DERIVRD | |
| BOD_CAB_STL | TBD |
| VER_SERIES_C | TIEF |
| DRIVE_CD | TIE |
| ENG_CD | T/NE |
| TRANS_CD | T/TC |
| PLANT_CD | AB |
| PRODN_DT | 4/4/2001 |
| WRTY_START_D | 6/14/2001 |
| NAME | FORT OODGE FORD L-M INC |
| DOC_NUM | 111307A |
| PH_NUM | 6767506 |
| WCC_CD | BR02 |
| PART_NUM_CA | 1LSZ |
| PART_NUM_CA | 1081202 |
| PART_NUM_CA | AAA |
| CUST_CONC_C | B40 |
| COND_CD | 42 |
| RFR_DT | 11/2/2001 |
| TIS_WSD | 3 |
| CLM_KEY | 4876455 |
| MILGE | 2381 |
| MTRL_COST | |

| | |
|---------------------|---|
| TOT_COST_GRO | 304.12 |
| LBR_HRS | 0.7 |
| DLR_CD | 1732 |
| DLR_SUB_CD | |
| REGION_CD | NA |
| ST_PROV_CD | IA |
| Ratings | 0 |
| CPSC_CD_6 | 11001 |
| TECH_TXT1 | SEAT BELT BUCKLES NOT LATCHING, REPLACE BOTH SEAT BELT BUCKLES. |
| TECH_TXT2 | |
| CUST_TXT | OTHER RESTRAINT TROUBLE |
| AREA_CD | 616 |
| COUNTRY_CD | USA |
| SLS_DLR_CD | 153568 |
| TXN_CD | 1 |
| CNTRY_SOLD | USA |
| QRT_CD | Q21 |
| VFG_CD | V06 |
| AWS_VL_CD | R1 |
| VRT_CD | S08 |
| TIS_FLAG | |

| | |
|---------------------|--------------------|
| ID | 38 |
| MDL_YR | 2001 |
| SORT_INDEX | 188 |
| VIN_CD | 1FTZR15EX1T |
| LBR_COST | |
| VEH_LINE_CD | T/R3 |
| MKT_DERIVED | * |
| BOD_CAB_STL | T/RD |
| VER_SERIES_C | T/EF |
| DRIVE_CD | T/E |
| ENG_CD | T/NE |
| TRANS_CD | T/TC |
| PLANT_CD | AG |
| PRODN_DT | 4/6/2001 |
| WRTY_START_D | 7/14/2001 |
| NAME | NORTH COUNTRY FORD |
| DOC_NUM | 4858301 |
| PH_NUM | 4271120 |
| WCC_CD | 6R02 |
| PART_NUM_CA | 1L6Z |
| PART_NUM_CA | 1061203 |
| PART_NUM_CA | AAA |
| CUST_CONC_C | S16 |
| COND_CD | 42 |
| RPR_DT | 8/2/2001 |
| TIS_WSD | 1 |
| CLM_KEY | 2891120 |
| MILGE | 890 |
| MTRL_COST | |

| | |
|---------------------|--|
| TOT_COST_GRO | 120.3 |
| LBR_HRS | 0.5 |
| DLR_CD | 2733 |
| DLR_SUB_CD | * |
| REGION_CD | NA |
| ST_PROV_CD | MN |
| Ratings | c |
| CPSC_CD_6 | 11001 |
| TECH_TXT1 | 1 PERFORMED RECALL 01S21 CHECKED BUCKLES WITH SPECIAL BOTH FAILED REPLACED DRIVERS SIDE AND HAD TO ORDER PASSENGER |
| TECH_TXT2 | |
| CUST_TXT | DRIVERS SIDE SEAT BELT UNHOOKS WHEN BUCKLED |
| AREA_CD | 783 |
| COUNTRY_CD | USA |
| SLS_DLR_CD | 189016 |
| TXN_CD | 1 |
| CNTRY_SOLD | USA |
| QRT_CD | Q21 |
| VFG_CD | V03 |
| AWS_VL_CD | R1 |
| VRT_CD | S08 |
| TIS_FLAG | |

| | |
|---------------------|-----------------|
| ID | 39 |
| MDL_YR | 2001 |
| SORT_INDEX | 189 |
| VIN_CD | 1FTZR15EX1T |
| LBR_COST | |
| VEH_LINE_CD | T/R3 |
| MKT_DERIVED | * |
| BOD_CAB_STL | T/R3 |
| VER_SERIES_C | T/EF |
| DRIVE_CD | T/E |
| ENG_CD | T/NE |
| TRANS_CD | T/TC |
| PLANT_CD | AG |
| PRODN_DT | 1/19/2001 |
| WRTY_START_D | 2/17/2001 |
| NAME | DAVE GOULD FORD |
| DOC_NUM | 059873A |
| PH_NUM | 8875541 |
| WCC_CD | 8R02 |
| PART_NUM_CA | 1L5Z |
| PART_NUM_CA | 1061203 |
| PART_NUM_CA | AAA |
| CUST_CONC_C | 940 |
| COND_CD | 42 |
| RPR_DT | 12/20/2001 |
| TIS_WSD | 11 |
| CLM_KEY | 583062 |
| MILGE | 4405 |
| MTRL_COST | |

| | |
|---------------------|--------------------------------------|
| TOT_COST_GRO | 1230 |
| LBR_HRS | 1.2 |
| DLR_CD | 2064 |
| DLR_SUB_CD | |
| REGION_CD | NA |
| ST_PROV_CD | ME |
| Radngs | 0 |
| CPSC_CD_6 | 11001 |
| TECH_TXT1 | PULLED SEAT REPLACED SEAT BELT LATCH |
| TECH_TXT2 | |
| CUST_TXT | LEFT SEAT BELT WILL NOT LATCH |
| AREA_CD | 207 |
| COUNTRY_CD | USA |
| SLS_DLR_CD | 111225 |
| TXN_CD | 2 |
| CNTRY_SOLD | USA |
| QRT_CD | Q21 |
| VFG_CD | V05 |
| AWS_VL_CD | R1 |
| VRT_CD | S08 |
| TIS_FLAG | |

| | |
|---------------------|---------------------------|
| ID | 40 |
| MDL_YR | 2001 |
| SORT_INDEX | 192 |
| VIN_CD | 1FTZR15EX1T |
| LBR_COST | |
| VEH_LINE_CD | T/R3 |
| MKT_DERIVED | |
| BOD_CAB_STL | T/B0 |
| VER_SERIES_C | T/EF |
| DRIVE_CD | T/E |
| ENG_CD | T/NE |
| TRANS_CD | T/TC |
| PLANT_CD | AG |
| PRODN_DT | 11/8/2000 |
| WRTY_START_D | 8/8/2001 |
| NAME | DUVALL FORD COMPANY, INC. |
| DOC_NUM | 3009301 |
| PH_NUM | 7824231 |
| WCC_CD | 9R02 |
| PART_NUM_CA | 1L5Z |
| PART_NUM_CA | 1051202 |
| PART_NUM_CA | AAA |
| CUST_CONC_C | 840 |
| COND_CD | 42 |
| RPR_DT | 8/27/2001 |
| TIS_WSD | 1 |
| CLM_KEY | 3508638 |
| MILGE | 1286 |
| MTRL_COST | |

| | |
|---------------------|-------------------------------------|
| TOT_COST_GRO | 79.57 |
| LRR_HRS | 0.4 |
| DLR_CD | 484 |
| DLR_SUB_CD | |
| REGION_CD | NA |
| ST_PROV_CD | GA |
| Ratings | b |
| CPSC_CD_6 | 11001 |
| TECH_TXT1 | REPLACE SEAT BELT |
| TECH_TXT2 | |
| CUST_TXT | P S SEAT BELT WILL NOT STAY LATCHED |
| AREA_CD | 708 |
| COUNTRY_CD | USA |
| SLS_DLR_CD | 121443 |
| TXN_CD | 1 |
| CNTRY_SOLD | USA |
| QRT_CD | Q21 |
| VFG_CD | V05 |
| AWS_VL_CD | R1 |
| VRT_CD | S08 |
| TIS_FLAG | |

| | |
|--------------|-----------------|
| ID | 41 |
| MDL_YR | 2001 |
| SORT_INDEX | 193 |
| VIN_CD | 1FTZR15EX1T |
| LBR_COST | |
| VEH_LINE_CD | T/R3 |
| MKT_DERIVED | * |
| BOD_CAB_STL | T/RD |
| VER_SERIES_C | T/EF |
| DRIVE_CD | T/E |
| ENG_CD | T/NE |
| TRANS_CD | T/TC |
| PLANT_CD | AG |
| PRODN_DT | 11/8/2000 |
| WRTY_START_D | 5/26/2001 |
| NAME | PORTSMOUTH FORD |
| DOC_NUM | 308521B |
| PH_NUM | 4331221 |
| WCC_CD | BR02 |
| PART_NUM_CA | 1LSZ |
| PART_NUM_CA | 1081203 |
| PART_NUM_CA | AAA |
| CUST_CONC_C | S26 |
| COND_CD | 41 |
| RPR_DT | 5/16/2002 |
| TIS_WSD | 12 |
| CLM_KEY | 8875790 |
| MILGE | 24828 |
| MTRL_COST | |

| | |
|---------------------|--|
| TOT_COST_GRO | 8223 |
| LBR_HRS | 04 |
| DLR_CD | 8662 |
| DLR_SUB_CD | |
| REGION_CD | NA |
| ST_PROV_CD | NH |
| Ratings | a |
| CPSC_CD_6 | 11001 |
| TECH_TXT1 | 24828 DRIVERS SEAT BELT BUCKEL INOP REPLACED DRIVERS SEAT BELT BUCKEL FOR IT WOULD NOT ACCEPT THE BELT |
| TECH_TXT2 | |
| CUST_TXT | CUSTOMER STATES THE DRIVERS SIDE SEATBELT WFNT LATCH |
| AREA_CD | 803 |
| COUNTRY_CD | USA |
| SLS_DLR_CD | 111846 |
| TXN_CD | EB4 |
| CNTRY_SOLD | USA |
| QRT_CD | Q21 |
| VFG_CD | V06 |
| AWS_VL_CD | R1 |
| VRT_CD | S06 |
| TIS_FLAG | |

| | |
|---------------------|-------------------------|
| ID | 42 |
| MDL_YR | 2001 |
| SORT_INDEX | 201 |
| VIN_CD | 1FTZR15EX1P |
| LBR_COST | |
| VEH_LINE_CD | T/R3 |
| MKT_DERIVED | * |
| BOD_CAB_STL | T/B0 |
| VER_SERIES_C | T/EF |
| DRIVE_CD | T/E |
| ENG_CD | T/NE |
| TRANS_CD | T/T0 |
| PLANT_CD | AX |
| PRODN_DT | 4/12/2001 |
| WRTY_START_D | 6/10/2001 |
| NAME | HANSEN FORD SALES, INC. |
| DOC_NUM | 3075388 |
| PH_NUM | 7480411 |
| WCC_CD | 6R02 |
| PART_NUM_CA | 1L6Z |
| PART_NUM_CA | 1061202 |
| PART_NUM_CA | AAA |
| CUST_CONC_C | 840 |
| COND_CD | 42 |
| RPR_DT | 8/28/2001 |
| TIS_WSD | 5 |
| CLM_KEY | 4037090 |
| MILGE | 4211 |
| MTRL_COST | |

Tuesday, December 14, 2004

Page 83 of 338

RQ04-011 E 1558

| | |
|---------------------|--|
| TOT_COST_GRO | 00.87 |
| LBR_HRS | 1.6 |
| DLR_CD | 4078 |
| DLR_SUB_CD | * |
| REGION_CD | NA |
| ST_PROV_CD | ND |
| Ratings | b |
| CPSC_CD_6 | 11001 |
| TECH_TXT1 | DIAGNOSE, FOUND THAT THE SEAT BELT PASSED THE 01821 RECALL TEST, BUT WOULD NOT STAY LATCHED AT TIMES. FOUND THAT THE LATCH ASSEMBLY WAS BAD. REPLACED AND RETESTED. WORKS GOOD NOW. FOUND NO LABOR O |
| TECH_TXT2 | P FOR BASIC PART NUMBER 81202. USED M TIME. |
| CUST_TXT | CUST STATES PASS SIDE SEAT BELT WONT STAY BUCKLED |
| AREA_CD | 701 |
| COUNTRY_CD | USA |
| SLS_DLR_CD | 136582 |
| TXN_CD | 1 |
| CNTRY_SOLD | USA |
| QRT_CD | Q21 |
| VFG_CD | V05 |
| AWS_VL_CD | R1 |
| VRT_CD | 908 |
| TIS_FLAG | |

| | |
|---------------------|--------------------------------|
| ID | 43 |
| MDL_YR | 2001 |
| SORT_INDEX | 202 |
| VIN_CD | 1FTZR15EX1R |
| LBR_COST | |
| VEH_LINE_CD | T/R3 |
| MKT_DERIVED | * |
| BOD_CAB_STL | T/BD |
| VER_SERIES_C | T/EF |
| DRIVE_CD | T/E |
| ENG_CD | T/NE |
| TRANS_CD | T/TG |
| PLANT_CD | AX |
| PRODN_DT | 4/8/2001 |
| WRTY_START_D | 10/13/2001 |
| NAME | HAVILL-SPOERL FORD LINCOLN-MER |
| DOC_NUM | 222490C |
| PH_NUM | 5684444 |
| WCC_CD | 6R02 |
| PART_NUM_CA | 1LSZ |
| PART_NUM_CA | 1001202 |
| PART_NUM_CA | AAA |
| CUST_CONC_C | 840 |
| COND_CD | 42 |
| RPR_DT | 1/26/2002 |
| TLS_WSD | 4 |
| CLM_KEY | 6665014 |
| MILGE | 3137 |
| MTRL_COST | |

| | |
|---------------------|---|
| TOT_COST_GRO | |
| LBR_HRS | |
| DLR_CD | 6143 |
| DLR_SUB_CD | |
| REGION_CD | NA |
| ST_PROV_CD | WI |
| Ratings | b |
| CPSC_CD_6 | 11001 |
| TECH_TXT1 | 3137 ORDERED SEAT BELT BUCKLE REPLACED PASS SEAT BELT |
| TECH_TXT2 | |
| CUST_TXT | PASS SIDE SEAT BELT WONT STAY LATCHED |
| AREA_CD | 920 |
| COUNTRY_CD | USA |
| SLS_DLR_CD | 14137G |
| TXN_CD | 2 |
| CNTRY_SOLD | USA |
| QRT_CD | Q21 |
| VFG_CD | V05 |
| AWS_VL_CD | R1 |
| VRT_CD | S08 |
| TIS_FLAG | |

| | |
|--------------|----------------------|
| ID | 44 |
| MDL_YR | 2001 |
| SORT_INDEX | 204 |
| VIN_CD | 1FTZR15EX1 |
| LRR_COST | |
| VEH_LINE_CD | T/R3 |
| MKT_DERIVED | * |
| BOD_CAB_STL | T/B0 |
| VER_SERIES_C | T/EF |
| DRIVE_CD | T/E |
| ENG_CD | T/NE |
| TRANS_CD | T/SC |
| PLANT_CD | AX |
| PRODN_DT | 4/9/2001 |
| WRTY_START_D | 8/21/2001 |
| NAME | UTAH AUTO COLLECTION |
| DOC_NUM | 51201401 |
| PH_NUM | 0608000 |
| WCC_CD | 6R02 |
| PART_NUM_CA | 1LSZ |
| PART_NUM_CA | 1081202 |
| PART_NUM_CA | AAA |
| CUST_CONC_C | 840 |
| COND_CD | 41 |
| RPR_DT | 8/30/2001 |
| TIS_WSD | 3 |
| CLM_KEY | 3358615 |
| MILGE | 0057 |
| MTRL_COST | |

| | |
|---------------------|--|
| TOT_COST_GRO | 08.34 |
| LBR_HRS | 0.2 |
| DLR_CD | 3314 |
| DLR_SUB_CD | * |
| REGION_CD | NA |
| ST_PROV_CD | UT |
| Ratings | a |
| CPSC_CD_6 | 11001 |
| TECH_TXT1 | CK.PASSENGER SEAT BELT BUCKEL FONND BUCKEL NOT TO LATCH EVERY TIME. REMOVED PASSENGER SEAT,CHANGED SEAT BELT BUCKEL INSTALL. PASSENGER SEAT,CK SEAT BELT OPERATION OK. |
| TECH_TXT2 | |
| CUST_TXT | CUST STATES THE PASSENGER SEAT BELT DOESNT ALWAYS LATCH. SOP R FRONT BUCKLE |
| AREA_CD | B01 |
| COUNTRY_CD | USA |
| SLS_DLR_CD | 158578 |
| TXN_CD | 2 |
| CNTRY_SOLD | USA |
| QRT_CD | Q21 |
| VFG_CD | V05 |
| AWS_VL_CD | R1 |
| VRT_CD | S08 |
| TIS_FLAG | |

| | |
|---------------------|------------------------|
| ID | 45 |
| MDL_YR | 2001 |
| SORT_INDEX | 207 |
| VIN_CD | 1FTZR15EX1P |
| LBR_COST | |
| VEH_LINE_CD | TTR3 |
| MKT_DERIVED | * |
| BOD_CAB_STL | TED |
| VER_SERIES_C | TIEF |
| DRIVE_CD | T/E |
| ENG_CD | T/NE |
| TRANS_CD | T/C |
| PLANT_CD | AX |
| PRODN_DT | 3/6/2001 |
| WRTY_START_D | 6/1/2001 |
| NAME | FOREST LAKE FORD, INC. |
| DOC_NUM | 9115451 |
| PH_NUM | 4644600 |
| WCC_CD | 6R02 |
| PART_NUM_CA | 1L5Z |
| PART_NUM_CA | 1061202 |
| PART_NUM_CA | AAA |
| CUST_CONC_C | 840 |
| COND_CD | 42 |
| RPR_DT | 9/14/2001 |
| TIS_WSD | 4 |
| CLM_KEY | 3891011 |
| MILGE | 3470 |
| MTRL_COST | |

TOT_COST_GRO
LBR_HRS
DLR_CD
DLR_SUB_CD
REGION_CD
ST_PROV_CD
Ratings
CPSC_CD_6
TECH_TXT1
TECH_TXT2
CUST_TXT
AREA_CD
COUNTRY_CD
SLS_DLR_CD
TXN_CD
CNTRY_SOLD
QRT_CD
VFG_CD
AWS_VL_CD
VRT_CD
TIS_FLAG

| | |
|---------------------|---------------------|
| ID | 48 |
| MDL_YR | 2001 |
| SORT_INDEX | 208 |
| VIN_CD | 1FTZR16EX1 |
| LRR_COST | |
| VEH_LINE_CD | TFR3 |
| MKT_DERIVED | * |
| BOD_CAR_STL | TBD |
| VER_SERIES_C | T/EF |
| DRIVE_CD | T/E |
| ENG_CD | T/NE |
| TRANS_CD | T/TC |
| PLANT_CD | AX |
| PRODN_DT | 3/6/2001 |
| WRTY_START_D | 3/15/2001 |
| NAME | CLOQUET FORD CENTER |
| DOC_NUM | 088110A |
| PH_NUM | 8784888 |
| WCC_CD | DFR02 |
| PART_NUM_CA | 1LEZ |
| PART_NUM_CA | 1081203 |
| PART_NUM_CA | AAA |
| CUST_CONC_C | 840 |
| COND_CD | 7 |
| RPR_DT | 10/28/2001 |
| TIS_WSD | 8 |
| CLM_KEY | 4730838 |
| MILGE | 8581 |
| MTRL_COST | |

Tuesday, December 14, 2004

Page 91 of 558

| | |
|---------------------|---|
| TOT_COST_GRO | 8384 |
| LRR_HRS | 04 |
| DLR_CD | 0255 |
| DLR_SUB_CD | |
| REGION_CD | NA |
| ST_PROV_CD | MN |
| Ratings | R |
| CPSC_CD_6 | 11001 |
| TECH_TXT1 | REMOVE LEFT SEAT REMOVE SEAT BUCKLE AND INSTALL NEW BUCKLE |
| TECH_TXT2 | |
| CUST_TXT | DR SIDE SEAT BELT BUCKLE WILL NOT LATCH AT TIMES |
| AREA_CD | 215 |
| COUNTRY_CD | USA |
| SLS_DLR_CD | 15948B |
| TXN_CD | 1 |
| CNTRY_SOLD | USA |
| QRT_CD | Q21 |
| VFG_CD | V05 |
| AWS_VL_CD | R1 |
| VRT_CD | S08 |
| TIS_FLAG | |

| | |
|---------------------|-----------------------|
| ID | 47 |
| MDL_YR | 2001 |
| SORT_INDEX | 213 |
| VIN_CD | 1FTZR15EX1R |
| LBR_COST | |
| VEH_LINE_CD | TRJ |
| MKT_DERIVED | |
| BOD_CAR_STL | TBC |
| VER_SRRIES_C | TEF |
| DRIVE_CD | T/E |
| ENG_CD | T/NE |
| TRANS_CD | T/TC |
| PLANT_CD | AX |
| PRODN_DT | 4/9/2001 |
| WRTY_START_D | 5/16/2001 |
| NAME | TOWN & COUNTRY MOTORS |
| DOC_NUM | 8478201 |
| PH_NUM | 8285400 |
| WCC_CD | BR02 |
| PART_NUM_CA | 1L5Z |
| PART_NUM_CA | 1081202 |
| PART_NUM_CA | AAA |
| CUST_CONC_C | S28 |
| COND_CD | 42 |
| RPR_DT | 4/15/2002 |
| TIS_WSD | 11 |
| CLM_KEY | 8390200 |
| MILGE | 10035 |
| MTRL_COST | |

| | |
|---------------------|---|
| TOT_COST_GRO | 7144 |
| LBR_HRS | 04 |
| DLR_CD | 12814 |
| DLR_SUB_CD | |
| REGION_CD | NA |
| ST_PROV_CD | MO |
| Ratings | 0 |
| CPSC_CD_6 | 11001 |
| TECH_TXT1 | CHK FOUND SEATBELT NOT STAYING LATCHED PULLS OUT REPLACED PASSENGER SEATBELT |
| TECH_TXT2 | |
| CUST_TXT | CHECK PASSENGER SEATBELT KEEPS COMING UNDONE |
| AREA_CD | B18 |
| COUNTRY_CD | USA |
| SLS_DLR_CD | 153364 |
| TXN_CD | 2 |
| CNTRY_SOLD | USA |
| QRT_CD | Q21 |
| VFG_CD | V06 |
| AWS_VL_CD | R1 |
| VRT_CD | B08 |
| TIS_FLAG | |

| | |
|---------------------|------------------|
| ID | 48 |
| MDL_YR | 2001 |
| SORT_INDEX | 214 |
| VIN_CD | 1FTZR15EX1P |
| LBR_COST | |
| VEH_LINE_CD | TR3 |
| MKT_DERIVED | |
| BOD_CAB_STL | TBD |
| VER_SERIES_C | TRF |
| DRIVE_CD | TR |
| ENG_CD | TNE |
| TRANS_CD | TTC |
| PLANT_CD | AX |
| PRODN_DT | 4/4/2001 |
| WRTY_START_D | 5/2/2001 |
| NAME | LINK BROS., INC. |
| DOC_NUM | 080004C |
| PH_NUM | 4882222 |
| WCC_CD | 8R02 |
| PART_NUM_CA | 1L5Z |
| PART_NUM_CA | 1081202 |
| PART_NUM_CA | AAA |
| CUST_CONC_C | 826 |
| COND_CD | 42 |
| RPR_DT | 4/18/2002 |
| TIS_WSD | 12 |
| CLM_KEY | 8000879 |
| MILGE | 23762 |
| MTRL_COST | |

| | |
|---------------------|--------------------------------|
| TOT_COST_GRO | 0283 |
| LBR_HRS | 28 |
| DLR_CD | 9417 |
| DLR_SUB_CD | * |
| REGION_CD | NA |
| ST_PROV_CD | WI |
| Ratings | C |
| CPSC_CD_6 | 11001 |
| TECH_TXT1 | RMVD SEAT AND REPLACED BELT OK |
| TECH_TXT2 | |
| CUST_TXT | PASSENGER SEAT BELT POPS OUT |
| AREA_CD | 715 |
| COUNTRY_CD | USA |
| SLS_DLR_CD | 158458 |
| TXN_CD | EB4 |
| CNTRY_SOLD | USA |
| QRT_CD | Q21 |
| VFG_CD | V05 |
| AWS_VL_CD | R1 |
| VRT_CD | 308 |
| TIS_FLAG | |

| | |
|--------------|----------------------|
| ID | 48 |
| MDL_YR | 2001 |
| SORT_INDEX | 215 |
| VIN_CD | 1FTZR15EX1F |
| LBR_COST | |
| VEH_LINE_CD | T/R3 |
| MKT_DERIVED | * |
| BOD_CAB_STL | T/BD |
| VER_SERIES_C | T/EF |
| DRIVE_CD | T/E |
| ENG_CD | T/NE |
| TRANS_CD | T/TC |
| PLANT_CD | AX |
| PRODN_DT | 4/10/2001 |
| WRTY_START_D | 4/23/2001 |
| NAME | UTAH AUTO COLLECTION |
| DOC_NUM | 48173802 |
| PH_NUM | 9898000 |
| WCC_CD | 6R02 |
| PART_NUM_CA | 1L5Z |
| PART_NUM_CA | 1081202 |
| PART_NUM_CA | AAA |
| CUST_CONC_C | 340 |
| COND_CD | 42 |
| RPR_DT | 7/23/2001 |
| TIS_WSD | 4 |
| CLM_KEY | 2530818 |
| MILGE | 5176 |
| MTRL_COST | |

| | |
|---------------------|---|
| TOT_COST_GRO | 3830 |
| LBR_HRS | |
| DLR_CD | 3314 |
| DLR_SUB_CD | |
| REGION_CD | NA |
| ST_PROV_CD | UT |
| Ratings | b |
| CPSC_CD_6 | 11001 |
| TECH_TXT1 | 1 INSTALLED SOP PART. WORKING PROPERLY. |
| TECH_TXT2 | |
| CUST_TXT | CUST STATES THE R FRONT SEAT BELT DOESN T ALWAYS STAY IN BUC KLE. SOP |
| AREA_CD | 001 |
| COUNTRY_CD | USA |
| SLS_DLR_CD | 136558 |
| TXN_CD | 2 |
| CNTRY SOLD | USA |
| QRT_CD | Q21 |
| VFG_CD | V06 |
| AWS_VL_CD | R1 |
| VRT_CD | S08 |
| TIS_FLAG | |

| | |
|---------------------|-----------------------------|
| ID | 80 |
| MDL_YR | 2001 |
| SORT_INDEX | 220 |
| VIN_CD | 1FTZR15EX1 |
| LBR_COST | |
| VEH_LINE_CD | T/R3 |
| MKT_DERIVED | |
| BOD_CAB_STL | T/RD |
| VER_SERIES_C | T/EF |
| DRIVE_CD | T/E |
| ENG_CD | T/NE |
| TRANS_CD | T/TC |
| PLANT_CD | AX |
| PRODN_DT | 11/13/2000 |
| WRTY_START_D | 01/18/2001 |
| NAME | BARBEE'S FREEWAY FORD, INC. |
| DOC_NUM | 0060901 |
| PH_NUM | 7573673 |
| WCC_CD | 6R02 |
| PART_NUM_CA | 1L5Z |
| PART_NUM_CA | 1081202 |
| PART_NUM_CA | AAA |
| CUST_CONC_C | S40 |
| COND_CD | 42 |
| RPR_DT | 09/13/2001 |
| TIS_WSD | 1 |
| CLM_KEY | 3043834 |
| MILGE | 1300 |
| MTRL_COST | |

| | |
|---------------------|---|
| TOT_COST_GRO | 71.51 |
| LBR_HRS | 8.2 |
| DLR_CD | 3148 |
| DLR_SUB_CD | |
| REGION_CD | NA |
| ST_PROV_CD | CO |
| Ratings | b |
| CPSC_CD_6 | 11001 |
| TECH_TXT1 | NOT HOLDING REMOVED PASSENGER SEAT AND REPLACED INOP SEAT BELT QUALITY CHECKED |
| TECH_TXT2 | |
| CUST_TXT | CS PASSENGER SEATBELT IS NOT HOLDING, INSTALL SOP PART |
| AREA_CD | 303 |
| COUNTRY_CD | USA |
| SLS_DLR_CD | 158005 |
| TXN_CD | 1 |
| CNTRY_SOLD | USA |
| QRT_CD | Q21 |
| VFG_CD | V05 |
| AWS_VL_CD | R1 |
| VRT_CD | 805 |
| TIS_FLAG | |

| | |
|---------------------|--------------------------|
| ID | 51 |
| MDL_YR | 2001 |
| SORT_INDEX | 228 |
| VIN_CD | 1FTZR15EX1F |
| LBR_COST | |
| VEH_LINE_CD | T/R3 |
| MKT_DERIVED | * |
| BOD_CAB_STL | T/BD |
| VER_SERIES_C | T/EF |
| DRIVE_CD | TE |
| ENG_CD | T/NE |
| TRANS_CD | T/TC |
| PLANT_CD | AX |
| PRODN_DT | 8/22/2000 |
| WRTY_START_D | 9/15/2000 |
| NAME | NOBLE FORD-MERCURY, INC. |
| DOC_NUM | 211888A |
| PH_NUM | 8818151 |
| WCC_CD | 8R02 |
| PART_NUM_CA | 1LSZ |
| PART_NUM_CA | 1081203 |
| PART_NUM_CA | AAA |
| CUST_CONC_C | 840 |
| COND_CD | 42 |
| RPR_DT | 1/23/2002 |
| TIS_WSD | 17 |
| CLM_KEY | 6736015 |
| MILGE | 12396 |
| MTRL_COST | |

| | |
|---------------------|--|
| TOT_COST_GRO | ██████████ |
| LBR_HRS | ██████████ |
| DLR_CD | 3418 |
| DLR_SUB_CD | █ |
| REGION_CD | NA |
| ST_PROV_CD | IA |
| Ratings | 0 |
| CPSC_CD_6 | 11001 |
| TECH_TXT1 | R&R DRIVERS SEAT BELT, WORKING OK AT THIS TIME |
| TECH_TXT2 | |
| CUST_TXT | DRIVERS SIDE SEAT BELT WILL NOT LATCH |
| AREA_CD | 515 |
| COUNTRY_CD | USA |
| SLS_DLR_CD | 163468 |
| TXN_CD | E84 |
| CNTRY_SOLD | USA |
| QRT_CD | Q21 |
| VFG_CD | V05 |
| AWS_VL_CD | R1 |
| VRT_CD | S08 |
| TIS_FLAG | |

| | |
|---------------------|------------------------|
| ID | 52 |
| MDL_YR | 2001 |
| SORT_INDEX | 229 |
| VIN_CD | 1FTZR1E91T [REDACTED] |
| LBR_COST | [REDACTED] |
| VEH_LINE_CD | T/R3 |
| MKT_DERIVED | * |
| BOD_CAB_STL | T/B0 |
| VER_SERIES_C | T/EF |
| DRIVE_CD | T/E |
| ENG_CD | T/NE |
| TRANS_CD | T/TC |
| PLANT_CD | AG |
| PRODN_DT | 5/25/2001 |
| WRTY_START_D | 8/31/2001 |
| NAME | RIVERHEAD MOTORS, INC. |
| DOC_NUM | 8543402 |
| PH_NUM | 7272200 |
| WCC_CD | BR02 |
| PART_NUM_CA | 1L6Z |
| PART_NUM_CA | 1081202 |
| PART_NUM_CA | AAA |
| CUST_CONC_C | 828 |
| COND_CD | 42 |
| RFR_DT | 3/28/2002 |
| TIS_WSD | 7 |
| CLM_KEY | 7801603 |
| MILGE | 8101 |
| MTRL_COST | [REDACTED] |