

PE03-044
FORD
5/13/2005
APPENDIX I
BOOK 23 OF 28
PART 4 OF 4

Other:

- o Write Order for 5 parts for update
- o Review Pedal arm strength
- o Check Holes in dash insulator

Burb Rossman
 2002
 AP2

Open issues:

- APG - 3 ETC pedals
- LISA - 1
- Fog - 1
- CP Boxes - ?

dash insulator
 1 No issue!
 Concern #
 Jerry
 ETC concern

- Moggil needs latest DVPR + FMEA
- Computer - ~~Alan~~ Alan's computer is down

2001 Target Agreement - Ask Peter

- torque, ^{motor} wiring harness

Joe hookup RQIF - 2002 -

APL - plan to make contact ~~regarding~~ regarding Portugal issue

to yell oppos.

Set up meeting w/ cost estimators - start off w/ Delta

- TeleFax
- Greg, Ellis, Copy Alan
- Larry Wyatt

JB - DFB

Include KSR to next meeting

Docman: hole dimensions

Adjustable Pedals PMT Meeting

Topics that need to be covered:

Concerns:

- Containment Plan for C11106773 - 2002 Sensor
- Hole in bracket - cover on pigtail concern

Cost:

- Need 2002 pricing established
- Need 2003 pricing established - parts new calculator

APQP:

- Waiting for reply from Garth on APQP review 5/30/00
- APQP Review (RED ITEMS) -

- o Design FMEA review - Monday - afternoon (Alan) 1:30
- o Design Reviews -
- o Design verification plan - testing behind schedule
- o Prototype build control plan
- o Prototype build - CP MRD - get parts
- o ~~Get APQP meeting set up~~

Future Meetings:

- o Set up Monthly Management Review Meetings - Elion
- o APQP Meeting - Jerry Lahrman 40389

Testing:

- o Need Vehicle for Teleflex - Lisa (Need information) Kendallville
- o Someone needs to support APG: Update Cost durability vehicle - Need Date Paul Baker
- o Crash testing adj. Pedals - any suggestions - All Call on Cost Vehicle
- o Torque Test for Accelerator Pedal - Waiting for part numbers from Body Eng - Lisa
- o DVP&R for Diesel - Gas (They should each have a set) - Elion Alan
- o Pedal system noise APQP - current ETR on DVP&R

- Poor Quality on Cost durability
- Fingerprint current drawing
- o CAE Durability - Pedal body buck for fatigue test - Amir Ourchang Dennis Mills
- o Memory Sensor Package

Drawing:

- o Need "PIN OUT" design for Barb Rostman for AP3 (Design for AP build transmittal) 2003
- o Spec for adjustable pedals - Docman - Alan

6/17/2000 10:24 AM

PER3-844-R 4473

Windsor
Engo Compensator
Daley
Docman
no rush

APQP
clerk

Torque
Cost. Plan
Cost Timing
RCT on D screen
PSW 12/1
date

Monday - afternoon (Alan)
1:30

hard
note
to
give
5th
program

Paul Baker
Call on
Cost
Vehicle

Need design direction & timing plan
NOT ready for call/ask - PDC - 1:30 afternoon

Print
not complete
- Print needs
to be done
for costing

Ask
Simon
is
Connector
to
get
new
in
Jim
Case

From: Wnuk, John (J.G.)
Sent: Wednesday, April 23, 2003 7:01 AM
To: Drever II, Donald (D.C.)
Subject: FW: Review of Open Field Actions w/Veliky, Engel and Mayer on April 25

No changes to my info.

John Wnuk
Buyer - Cables, Pedals, & Parking Brakes
Global Chassis Commodity Management
Phone/ Fax: (313) 337-2505
EMAIL: jwnuk@ford.com
Office: VPO 3E010

-----Original Message-----

From: Drever II, Donald (D.C.)
Sent: Tuesday, April 22, 2003 5:01 PM
To: Welton, Jeffrey (J.W.); Shepherd, Scott (S.A.); Agosto, Dawn (D.M.); Samuelson, Al (A.L.); Bahrendt, Brigit (B.A.); Vailt, Reid (R.L.); Smith, Craig (C.P.); Sonnenchein, Stefan (S.); Byrne, Melissa (M.A.); Wnuk, John (J.G.); Sheffield, Drew (D.L.); Curti, Al (A.); Coscarelli, Craig (C.); Bryant, DeJoy (D.); Henderson, Steven (S.P.); Campbell, Marc (M.L.); Mroczka, Jennifer (J.L.)
Cc: Burford, Chris (C.B.)
Subject: Review of Open Field Actions w/Veliky, Engel and Mayer on April 25

Hello,

The second of a series of monthly reviews between Dave Veliky, Jeff Engel, Jean Mayer and the Directors regarding open field actions is scheduled for Friday, April 25 at 11:00 AM. In preparation, please review the attached file (choose the tab for your department) and let me know if you would like to change the "Status", "Next Steps" or "Targeted Completion". Please forward your changes to me by COB on Thursday, April 24. Thanks.



FACT
(JA_Apr 25 2003)

Don Drever
Finance Specialist - Supplier Technical Assistance
Purchasing Controller's Office
Ford Motor Company
Phone/Fax: (313) 32-31783

Field Action Cost Recovery - NA Status
Velliky, Mayer, Engel Review - April 25, 2003

Order	Region/Brand	Aging of Open Actions			Total
		Less Than 90 Days (Count)	Between 90 days & 1 Year (Count)	More Than 1 Year (Count)	
<u>Ford - North America</u>					
1	Powertrain	2	-	1	3
2	Body & Exterior	-	-	1	1
3	Chassis	2	-	1	3
	Electrical	-	-	-	-
	Interior	-	-	-	-
	Ford - North America - Total	4	-	3	7

PER-014 13438

From: Setil, Frank (F.E.)
Sent: Monday, September 08, 2003 2:12 PM
To: Tokarsky, Michael (M.); Oswald, Greg (G.G.)
Cc: Saroka, Mary Lynn (M.L.); Tealfee, Cynthia (C.A.)
Subject: FW: 2001 7.3L accel pedal data

Attached are some graphs to aid in this Wednesday's 9:00 teleconference. The agenda item is 2001 7.3L accelerator pedal assembly/throttle position sensor.

This item was discussed last week and the recommendation was to proceed with a 2nd level analysis. Based on the attached data, we will be looking for a recommendation regarding which vehicle lines to include in our report. We can also discuss which categories we should include in the final symptom pareto.

Frank E. Setil
Powertrain Supervisor
Enhanced Concern Identification Dept.
Phone 313-248-6280
CDSID FSETILI

-----Original Message-----
From: Johnson, Steven (S.M.)
Sent: Monday, September 08, 2003 11:02 AM
To: Setil, Frank (F.E.)
Subject: 2001 7.3L accel pedal data

Hi Frank,

Could you please forward the following information to Greg Oswald and Mike Tokarsky.

Here is the data that I have for the 2001 Superduty/Excursion/Econoline 7.3L accelerator pedal issue discussed at last weeks CCM teleconference:

VOQ-5 total reports-all Superduty vehicles (1 fatality)
CQIS-35 total reports-34 Superduty, 1 Econoline (No significant events)
AWS-4382 total reports-4045 Superduty, 178 Econoline, 159 Excursion (No significant events)

I have pareto'd out the customer symptoms using keyword searches for the AWS data. The bulk of the reports are captured in check engine light complaints. Even if the customer was having drivability issues, if the check engine light was illuminated, I categorized the reports into this file because of the overtness. I have attached several graphs in the Excel file FYI. Since Econoline uses a different pedal assembly than Superduty/Excursion, I have separated all of the graph data by these two vehicle categories.



01 FH 7.3 accel
pedal AWS grap...

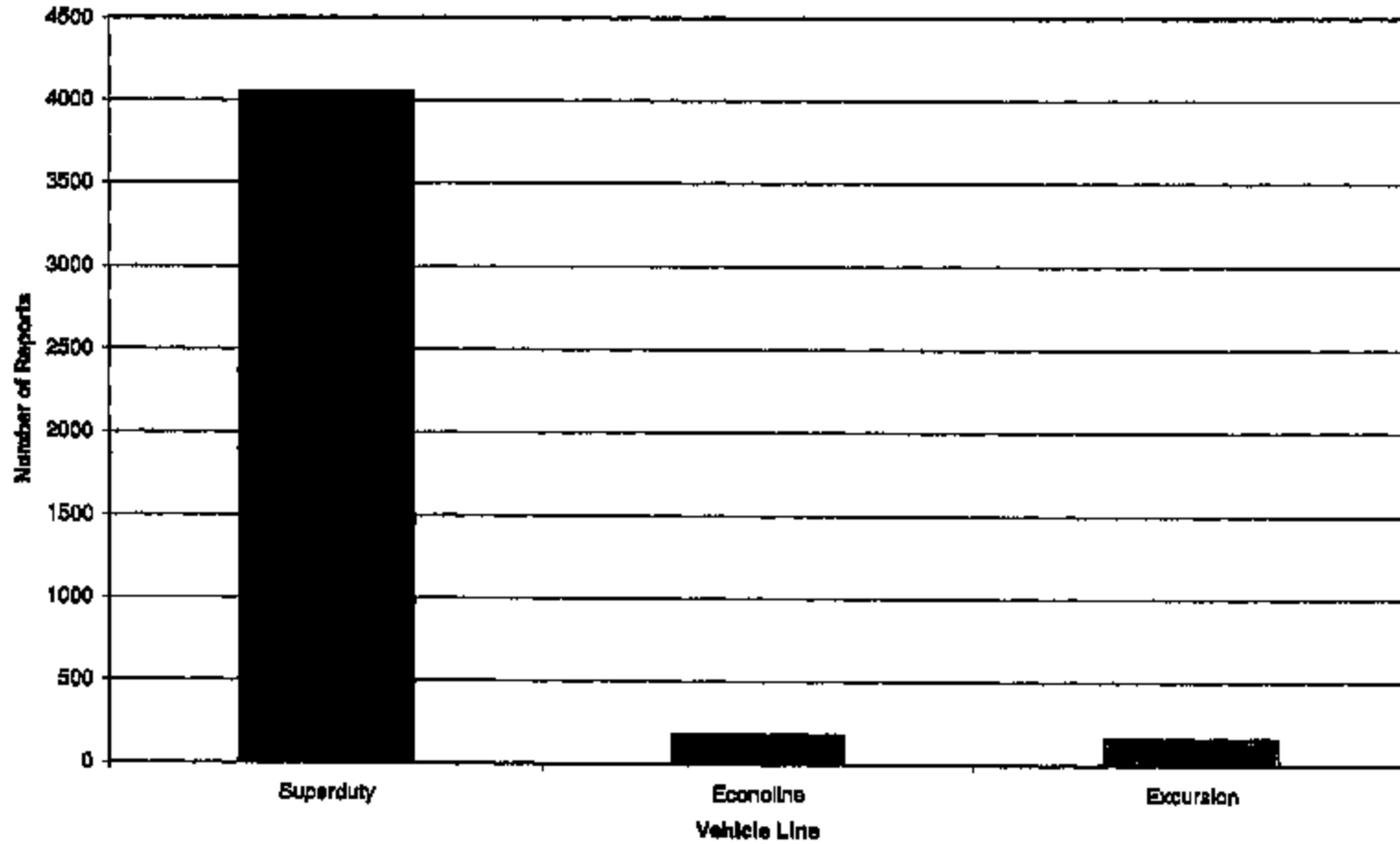
I will put this item back on the CCM agenda for this Wednesday to determine the scope for the paper requested. If you have any preliminary questions, let me know.

Thanks,

Steve Johnson
ECI concern analyst

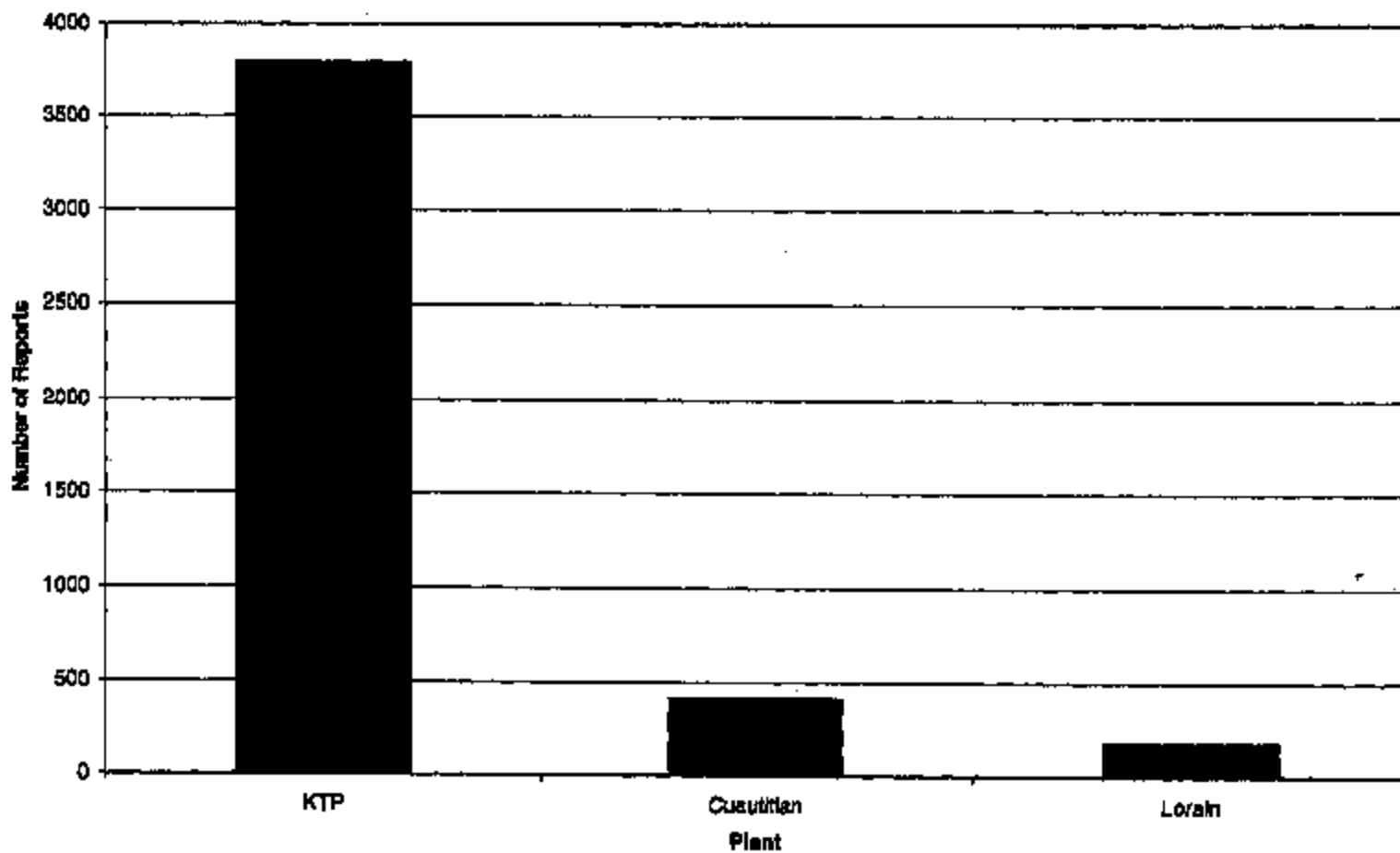
sjohns62@ford.com
(313) 248-8113

Vehicle Line (AWS data)



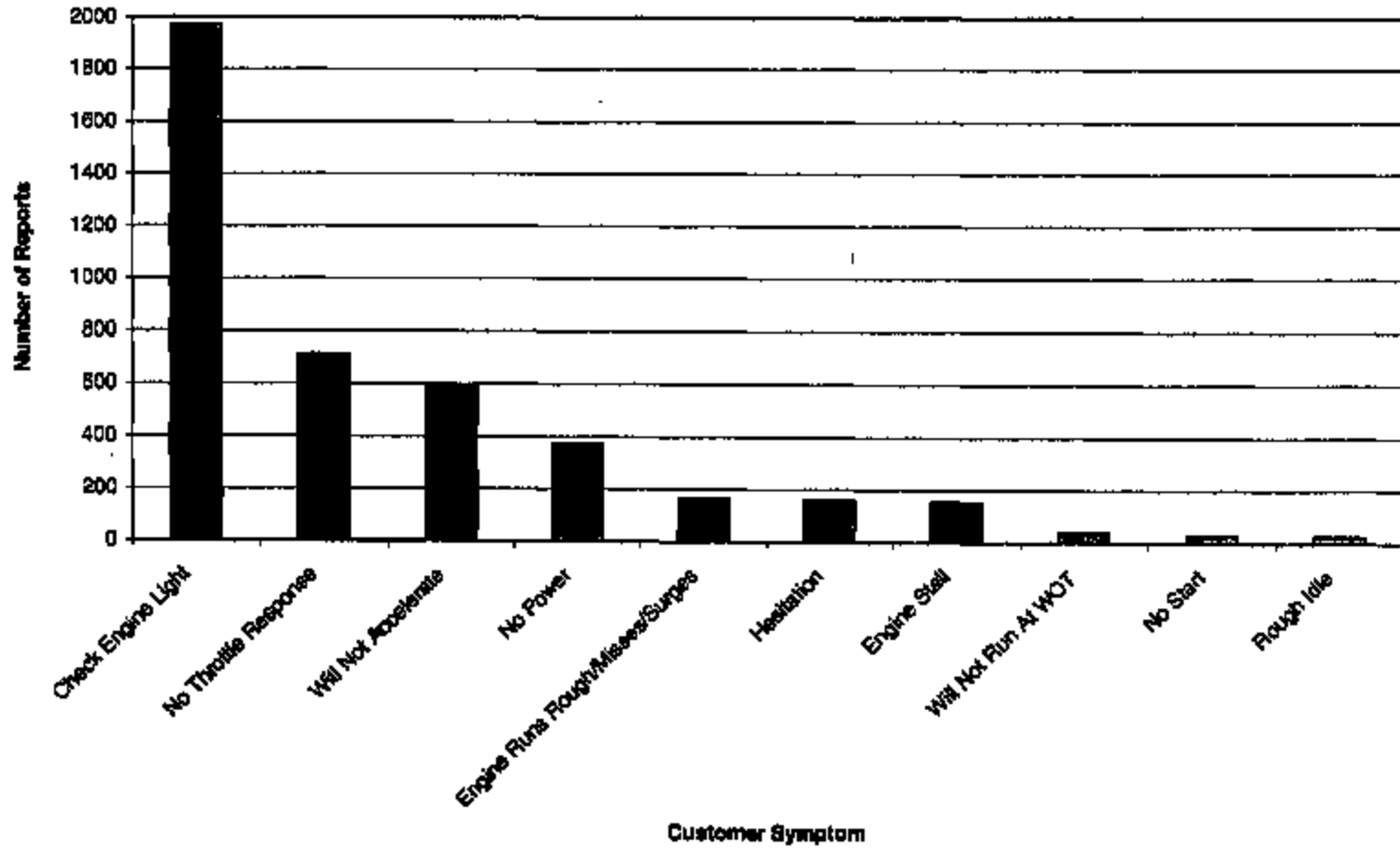
PERC-044 23091

Plant (AWS data)



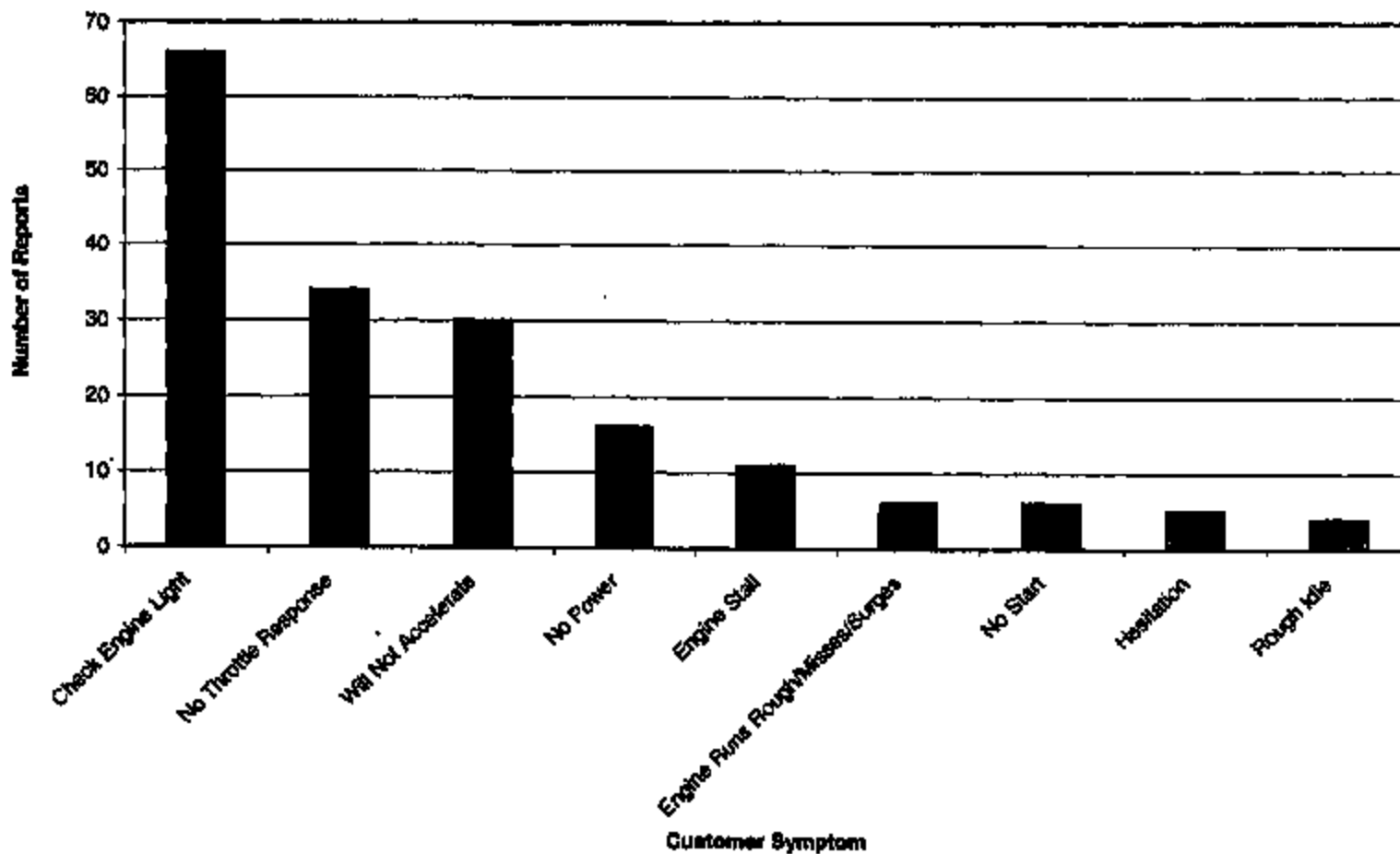
FD-302 (Rev. 11-27-80)

Customer Symptom Superduty-Excursion (AWS data)



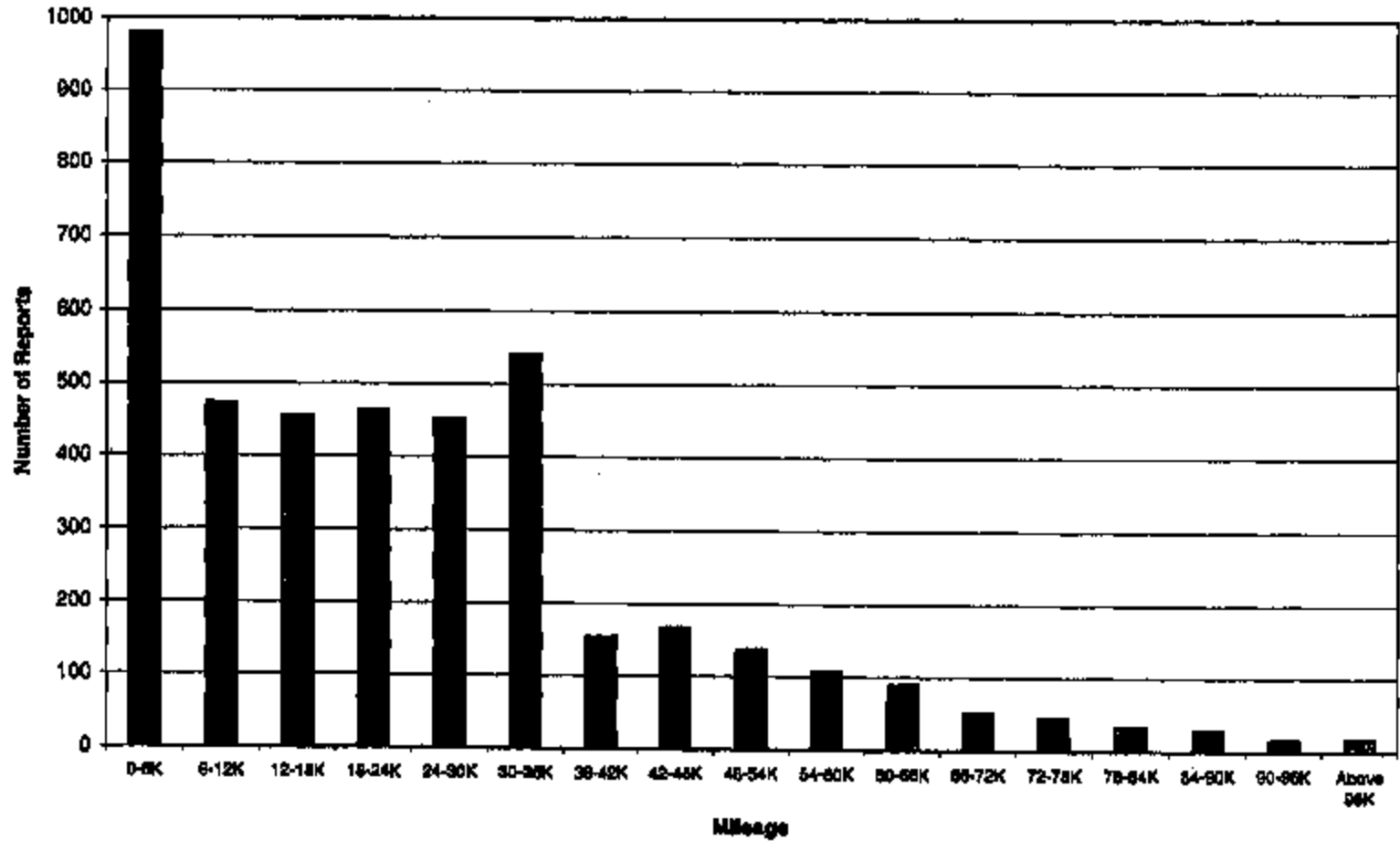
PERC-041 23883

Customer Symptom Econoline (AWS data)



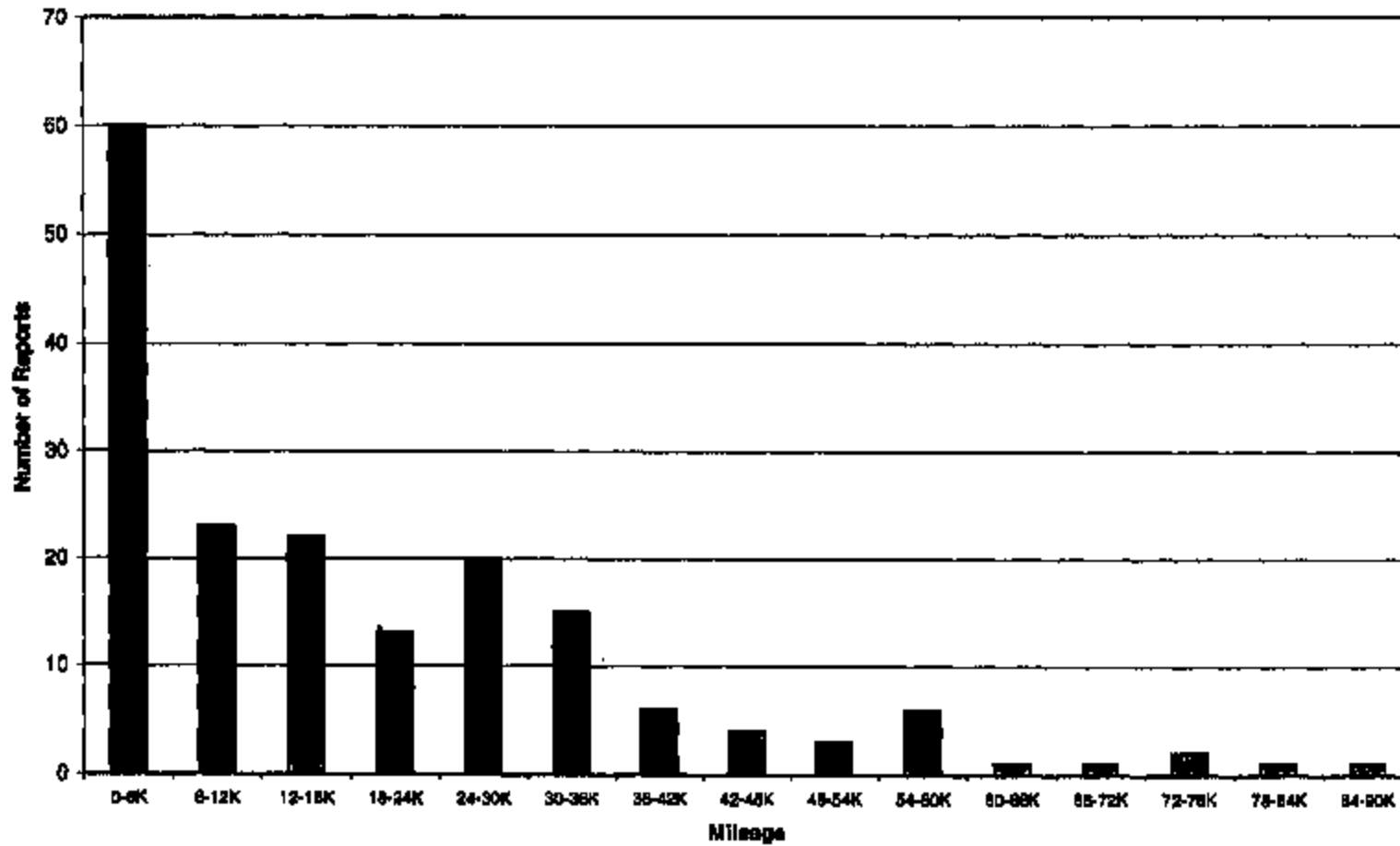
PIE2-014 23/04

Mileage Superduty-Excursion (AWS data)



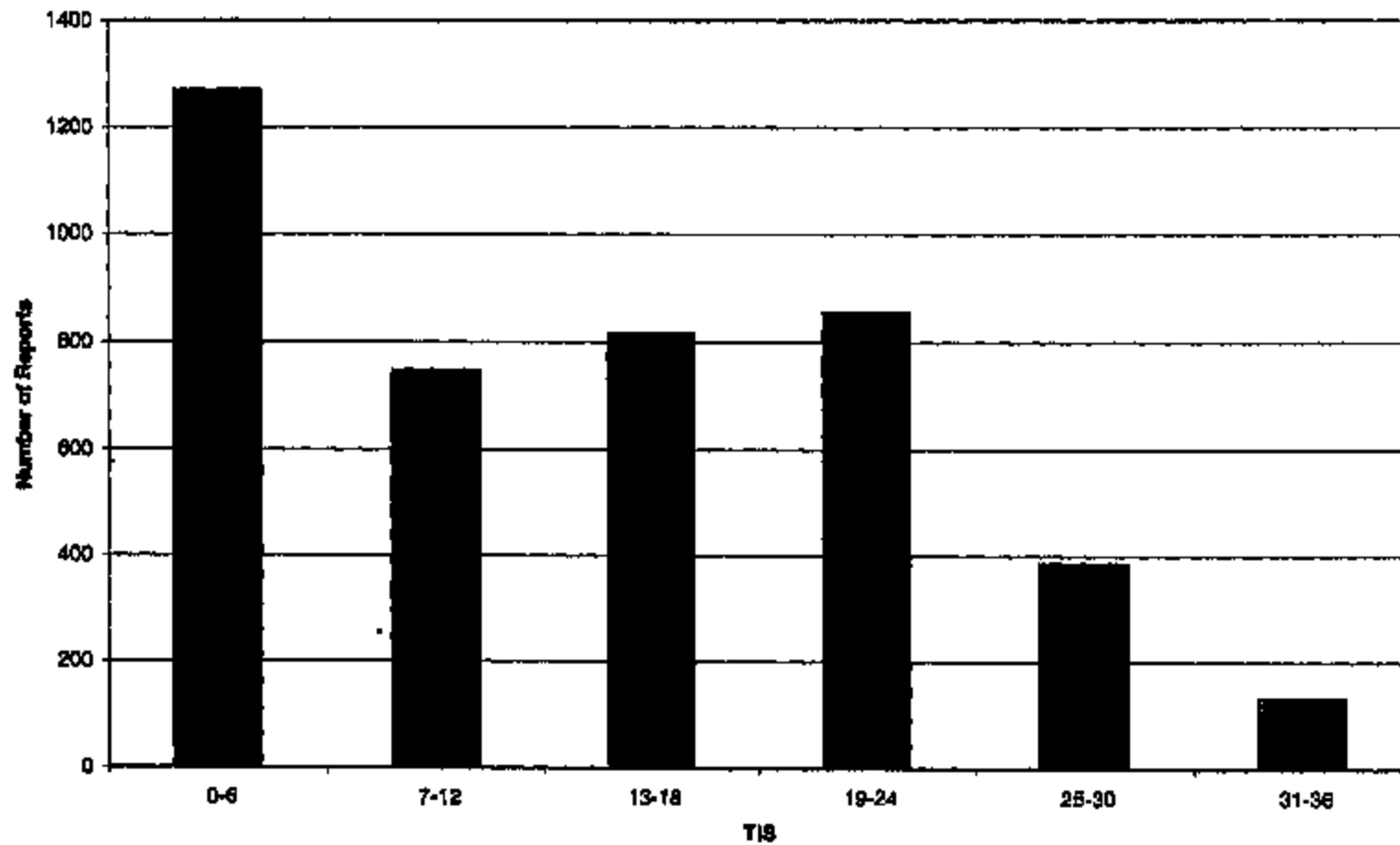
PERC-044 23895

Mileage Econoline (AWS data)



PH03-044 23008

TIS Superduty-Excursion (AWS data)



PERG-014 23097

TIS Econoline (AWS data)

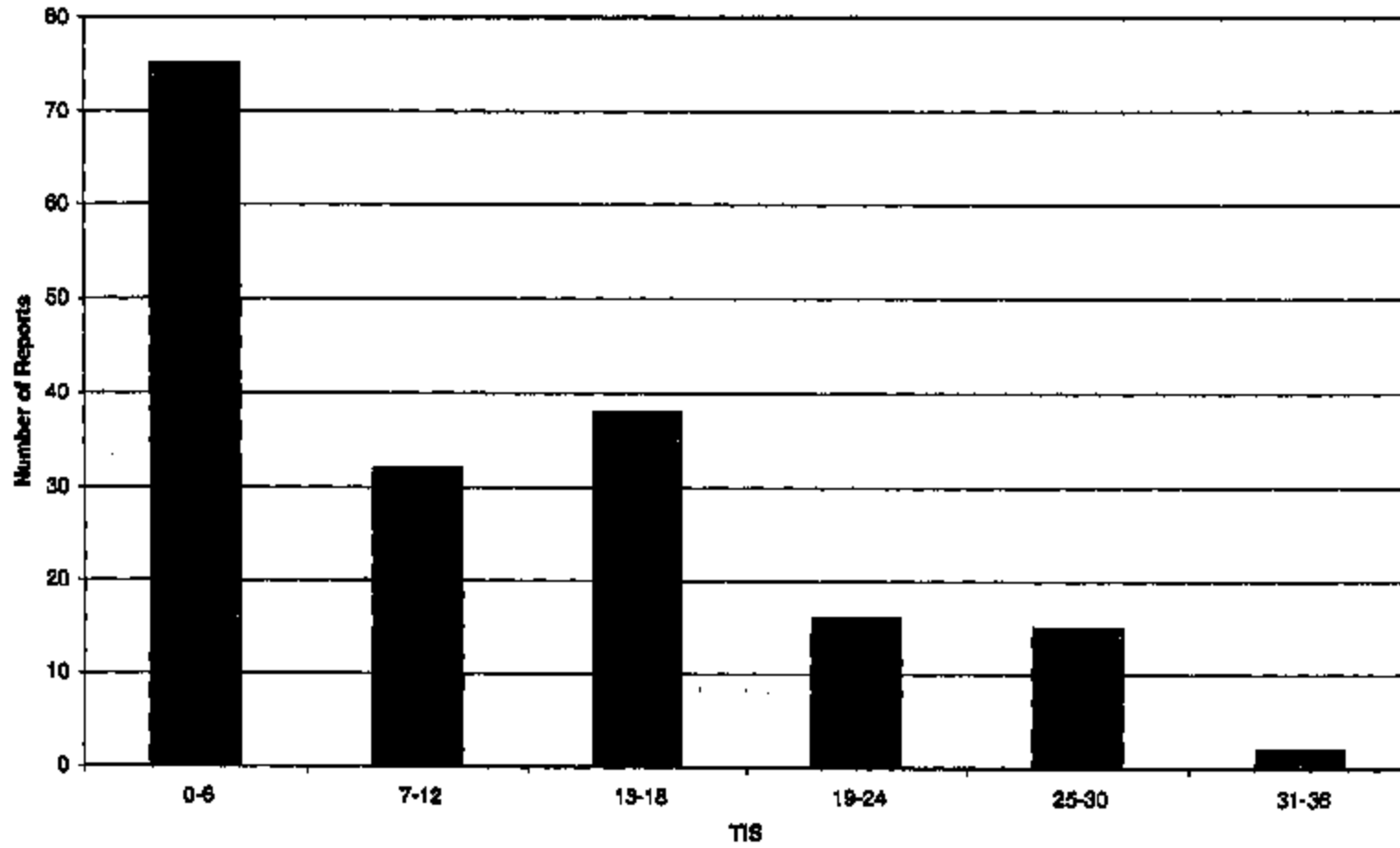
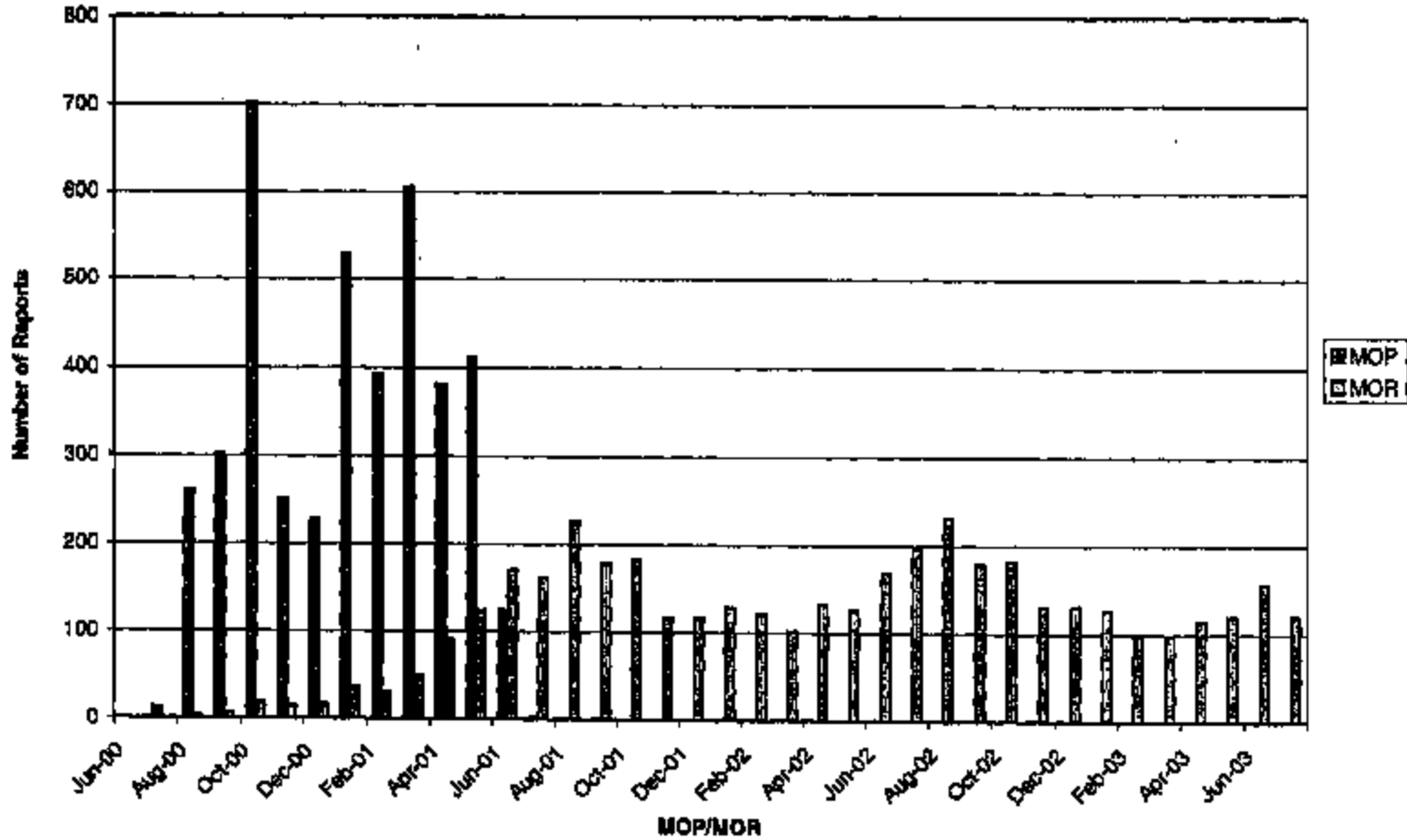


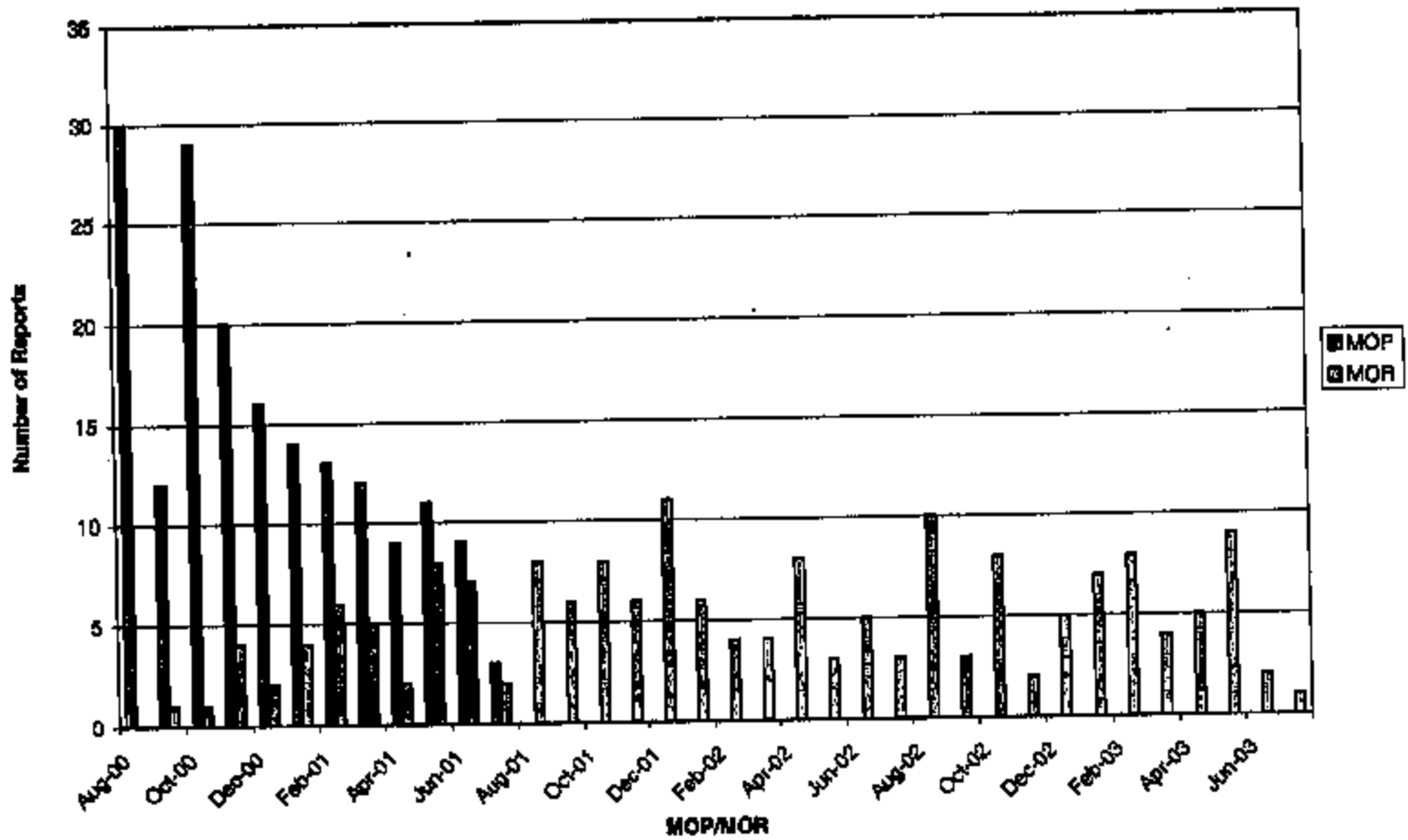
FIGURE 4-4 2/20/98

MOP/MOR Superduty-Excursion (AWS data)



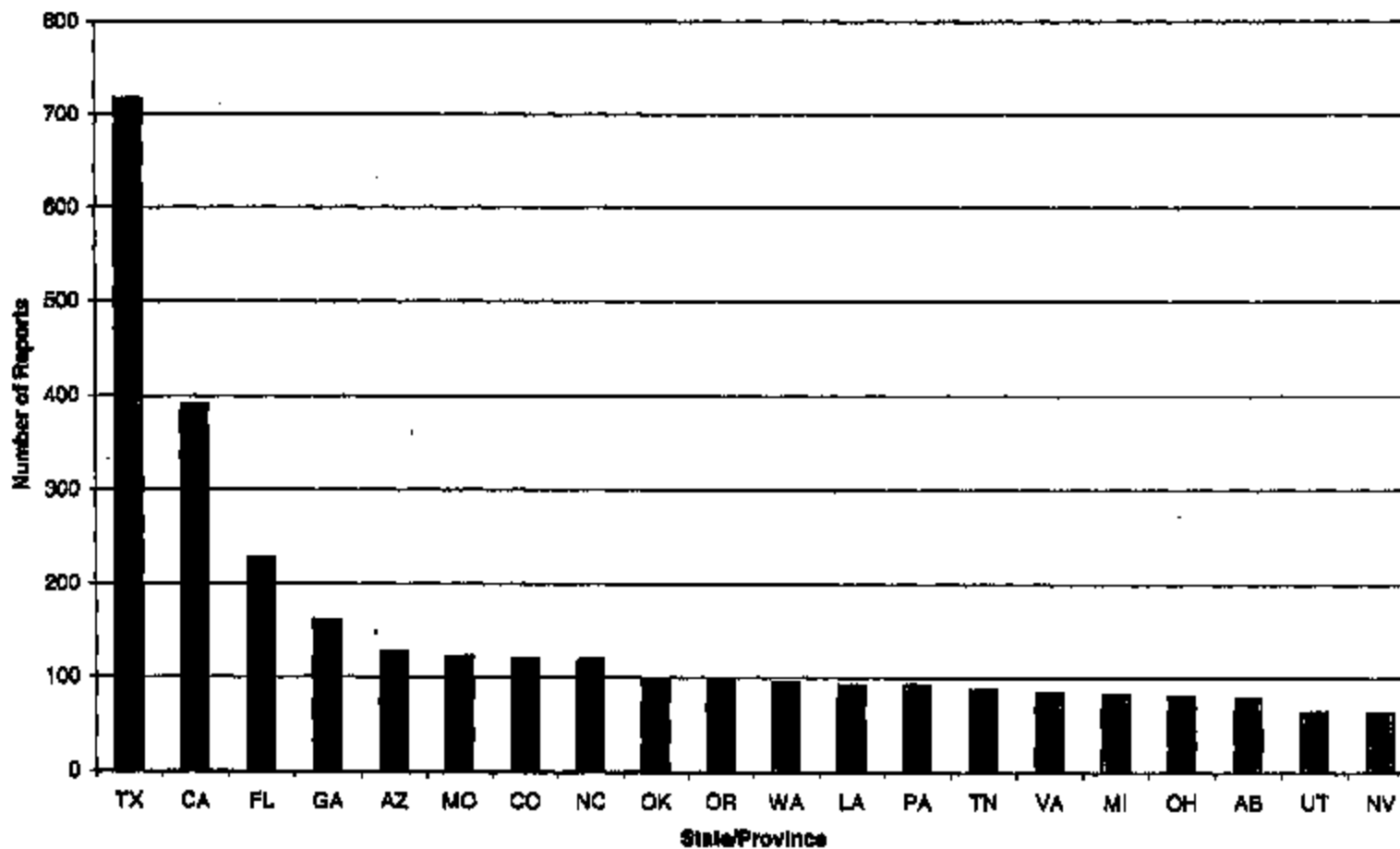
PERC-944 23839

MOP/MOR Econoline (AWS data)



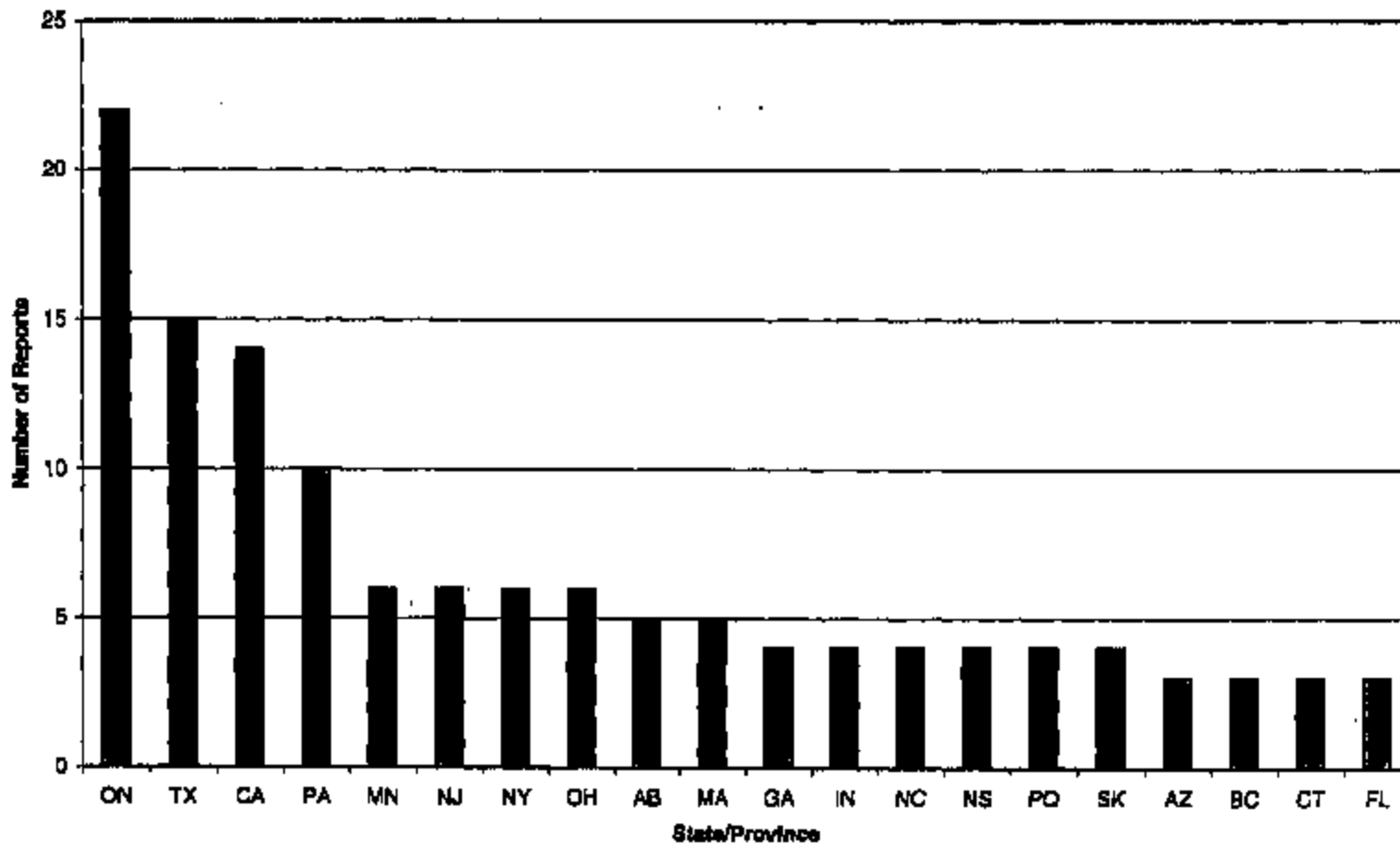
PERC-844 23988

State/Province Top 20 Superduty-Excursion (AWS data)



18882 444 23801

State/Province Top 20 Econofine (AWS data)



PER3-044 23802

Vehicle Line	Number of Reports	Symptom	Superstacy-Occurrence	Symptom	Occurrences
Superduty	4048	Check Engine Light	1871	Check Engine Light	80
Excursion	178	No Throttle Response	706	No Throttle Response	24
Excursion	188	W/ill Not Accelerate	882	W/ill Not Accelerate	28
		No Power	370	No Power	18
		Engine Runs Rough/Idle/Starts/Durges	182	Engine Stall	11
Plant	Number of Reports	Heavilation	180	Engine Runs Rough/Idle/Starts/Durges	8
KTP	3782	Engine Stall	181	No Start	8
Excursion	432	W/ill Not Run At WOT	27	Heavilation	8
Larkin	128	No Start	27	Rough Idle	4
		Rough Idle	22		

Mileage	Superstacy-Occurrence	Mileage	Occurrences
0-5K	878	0-5K	68
5-10K	478	5-10K	43
10-15K	465	10-15K	22
15-20K	481	15-20K	13
20-25K	480	20-25K	26
25-30K	541	25-30K	15
30-35K	154	30-35K	8
35-40K	187	35-40K	4
40-45K	138	40-45K	3
45-50K	307	45-50K	8
50-55K	88	50-55K	1
55-60K	21	55-60K	1
60-65K	48	60-65K	2
65-70K	39	65-70K	1
70-75K	28	70-75K	1
75-80K	10	75-80K	1
80-85K	17		
Above 85K			

TW	Superstacy-Occurrence	TW	Occurrences
6-8	1888	6-8	79
7-12	747	7-12	26
13-18	816	13-18	28
19-24	855	19-24	18
25-30	388	25-30	15
31-36	181	31-36	7

PERC-014 23893



Central Laboratory
16000 Century Drive
Dearborn, MI 48120-1267
FAX (313) 322-1614

Report 31079b

July 11, 2003

To: Greg West (313) 84-69401 (313) 32-24965 FAX
From: M. C. Haga (313) 33-78306
Subject: Electronic Accelerator Pedals with Grease
Part Number: 2C34-6F836-DA
Supplier: Teleflex

Received: Two samples of grease labeled as Nyogal 774 and Nye Instrument Grease 706D were received on May 12, 2003. Two electronic accelerator pedal assemblies were also received on May 12, 2003. They were labeled as follows:
Serial Number G2I28AU137 A82912
Serial Number G2I28AU137 A82930
Thirteen additional samples were received on June 10, 2003. They were labeled as follows:
Serial Number G2F26AL137 A72506
Serial Number G2G10AU137 A75935
Serial Number G2G16AU137 A77100
Serial Number G2H26AU137 A90469
Serial Number G2H26AU137 A90793
Serial Number G2H30AL137 A92199
Serial Number G2H30AU137 A92153
Serial Number G2H30AU137 A92189
Serial Number G2I28AU137 A82909
Serial Number G2I28AU137 A82911
Serial Number G2I28AU137 A82915
Serial Number on Pedal 2E31AU137 R15400 (rejected)
Yellow Tag Number D201.01E09

Object: Perform requested analysis for information. Provide photographic documentation.

Data and Analysis:

Molecular Characterization
(FTIR, Microscopic, Qualitative)

Greases

Spectra of Nyogal 774 grease as received are characteristic of silica filled hydrocarbon.

Spectra of Nye 706 D grease as received are characteristic of lithium soap filled synthetic ester based oil.

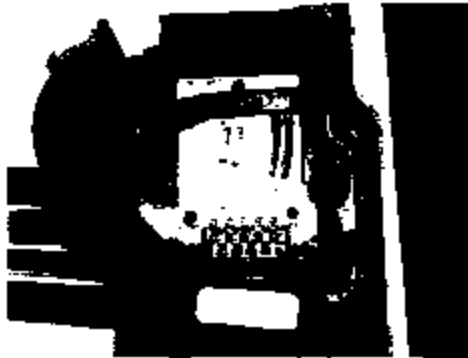
Spectra of the methylene chloride solubles of Nye 706 D grease are characteristic of synthetic ester based oil.

*write inclusion
graph into report*

<i>Methylene Chloride Solubles</i>				
	Weight of Solubles, grams		Molecular Characterization (FTIR)	
<i>Unused Samples</i>				
	Switch Tracks	Potentiometer Tracks	Switch Tracks ²	Potentiometer Tracks
G2H26AU137 A90489	0.0056	0.0005	Synthetic ester based oil, similar to base oil of Nyc 706D grease	Synthetic ester based oil, similar to base oil of Nyc 706D grease
G2H26AU137 A90793	0.0047	0.0009	Synthetic ester based oil, similar to base oil of Nyc 706D grease	Synthetic ester based oil, similar to base oil of Nyc 706D grease
G2H30AU137 A92139	0.0009	0.0003		Synthetic ester based oil, similar to base oil of Nyc 706D grease
G2H30AU137 A92153	0.0008	0.0004		Synthetic ester based oil, similar to base oil of Nyc 706D grease
G2H30AU137 A92189	0.0009	0.0009		Synthetic ester based oil, similar to base oil of Nyc 706D grease
G2I28AU137 A82909	0.0002	0.0004	Synthetic ester based oil, similar to base oil of Nyc 706D grease	Synthetic ester based oil, similar to base oil of Nyc 706D grease and hydrocarbon, possibly from the base oil of (Nycgel) 774 grease ⁴
G2I28AU137 A82911	0.0005	0.0004		Insufficient Sample
G2I28AU137 A82912	0.0002	0.0002	Synthetic ester based oil, similar to base oil of Nyc 706D grease	Synthetic ester based oil, similar to base oil of Nyc 706D grease
G2I28AU137 A82915	0.0007	0.0001		Synthetic ester based oil, similar to base oil of Nyc 706D grease
G2I28AU137 A82930	0.0002	0.0001		Insufficient Sample

² Molecular Characterization was performed only on a representative sample of the switch tracks

⁴ The Nycgel 774 grease may have been dislodged from the rub bar when disassembling the part



Accelerator Pedal Yellow Tag # D201.01E09



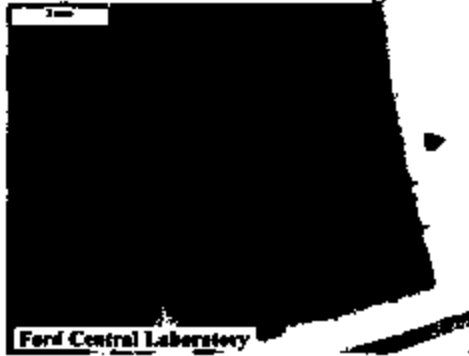
Switch Tracks Bottom Half Yellow Tag # D201.01E09



Switch Tracks Top Half Yellow Tag # D201.01E09



Switch Tracks Metal Contacts Yellow Tag # D201.01E09

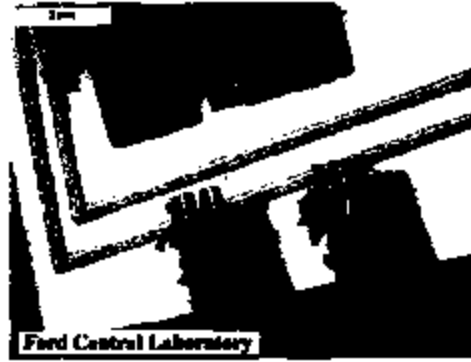


Potentiometer Tracks Bottom Half Yellow Tag # D201.01E09

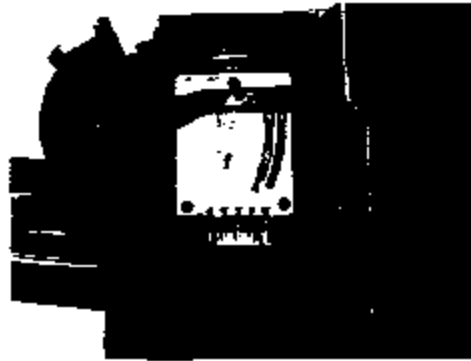


Potentiometer Tracks Top Half Yellow Tag # D201.01E09

31079



Potentiometer Tracks Metal Contacts Yellow Tag # E201.01E09



Accelerator Pedal Serial Number on Pedal G2E31AU137R15400 (Rejected)



Ford Central Laboratory

Switch Tracks Bottom Half Serial Number on Pedal G2E31AU137R15400 (Rejected)



Ford Central Laboratory

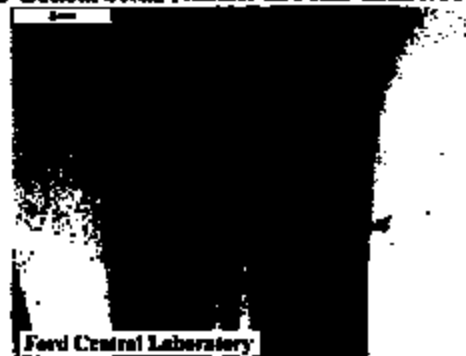
Switch Tracks Top Half Serial Number on Pedal G2E31AU137R15400 (Rejected)



Switch Tracks Metal Contacts Serial Number on Pedal G2E31AU137R15400 (Rejected)



Potentiometer Tracks Bottom Serial Number on Pedal G2E31AU137R15400 (Rejected)

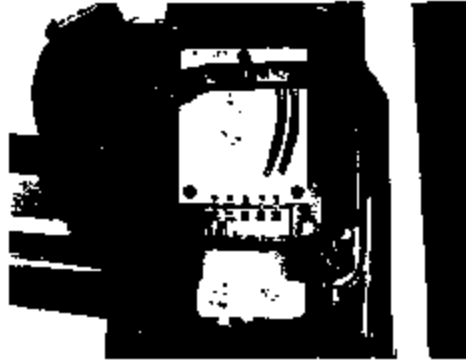


Potentiometer Tracks Top Half Serial Number on Pedal G2E31AU137R15400
(Rejected)

31079



Potentiometer Tracks Metal Contacts Serial Number on Pedal G2E31AU137R15400
(Rejected)



Accelerator Pedal # G2F26AU137A72506

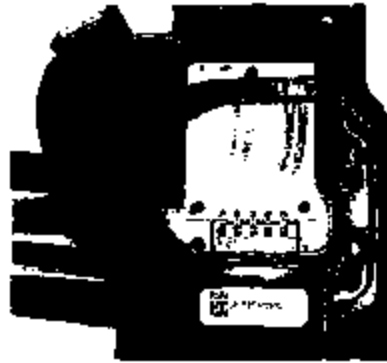


Switch Tracks # G2F26AU137A72506

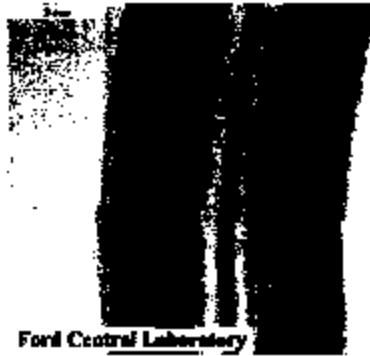


Potentiometer Tracks # G2F26AU137A72506

31079



Accelerator Pedal # G2G10AU137A75935



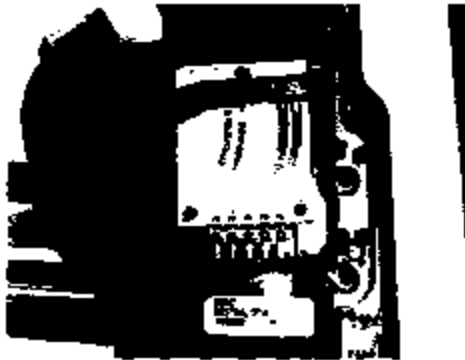
Ford Central Laboratory

Switch Tracks # G2G10AU137A75935

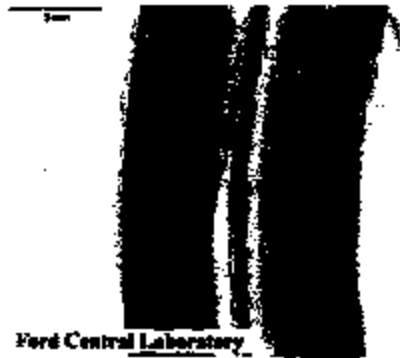


Ford Central Laboratory

Potentiometer Tracks # G2G10AU137A75935



Accelerator Pedal # G2G16AU137A77100



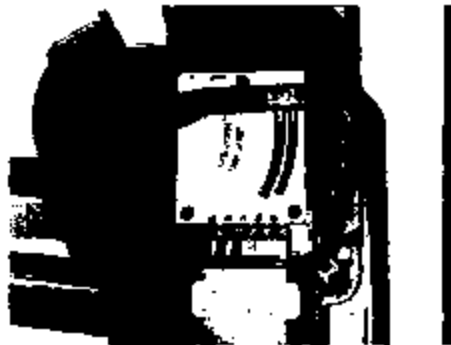
Ford Central Laboratory

Switch Tracks # G2G16AU137A77100



Ford Central Laboratory

Potentiometer Tracks # G2G16AU137A77100



Accelerator Pedal # G2H26AU137A90489



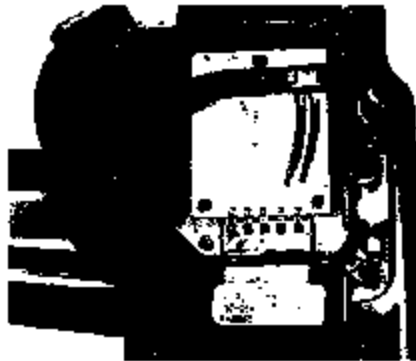
Ford Central Laboratory

Switch Tracks # G2H26AU137A90489

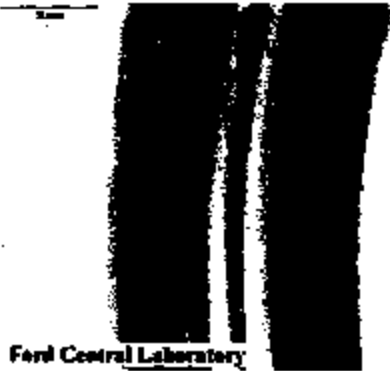


Ford Central Laboratory

Potentiometer Tracks # G2H26AU137A90489



Accelerator Pedal # G2H26AU13790793



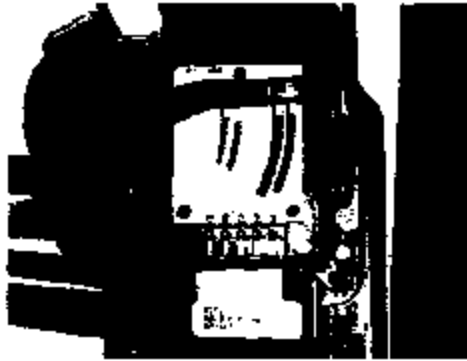
Ford Central Laboratory

Switch Tracks # G2H26AU13790793

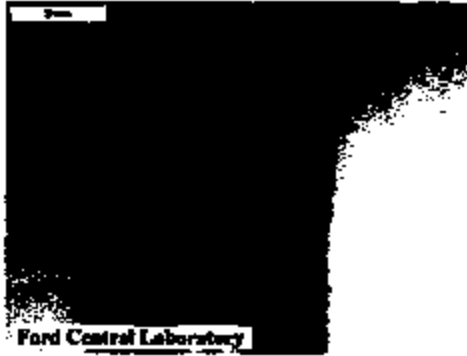


Ford Central Laboratory

Potentiometer Tracks # G2H26AU13790793



Accelerator Pedal # G2H30AU137A92139



Ford Central Laboratory

Switch Tracks # G2H30AU137A92139



Ford Central Laboratory

Potentiometer Tracks # G2H30AU137A92139



Accelerator Pedal # G2H30AU137A92153



Switch Tracks # G2H30AU137A92153

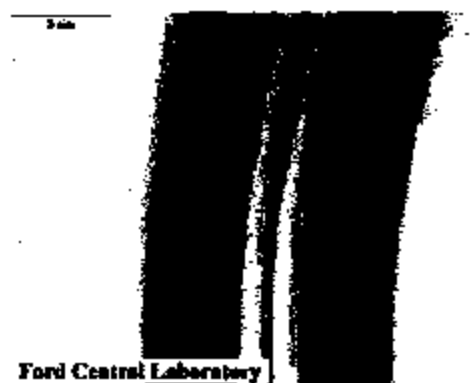


Potentiometer Tracks # G2H30AU137A92153

31079

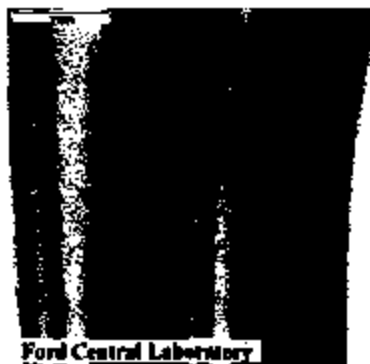


Accelerator Pedal # G2H30AU137A92189



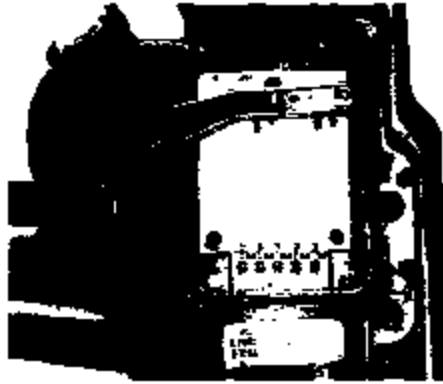
Ford Central Laboratory

Switch Tracks # G2H30AU137A92189

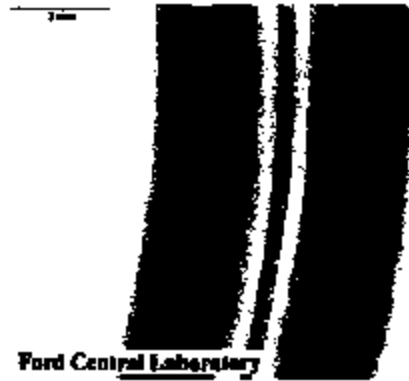


Ford Central Laboratory

Potentiometer Tracks # G2H30AU137A92189



Accelerator Pedal # G2128AU137A82909



Ford Central Laboratory

Switch Tracks # G2128AU137A82909



Ford Central Laboratory

Potentiometer Tracks # G2128AU137A82909



Accelerator Pedal # G2I28AU137A82911



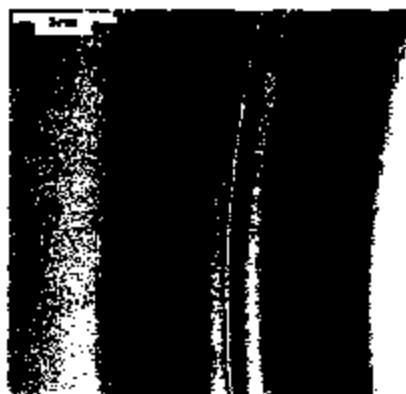
Switch Tracks # G2I28AU137A82911



Potentiometer Tracks # G2I28AU137A82911



Accelerator Pedal # G2E28AU137A82912



Switch Tracks # G2E28AU137A82912



Potentiometer Tracks # G2E28AU137A82912

31079

Accelerator Pedal # G2I28AU137A82912



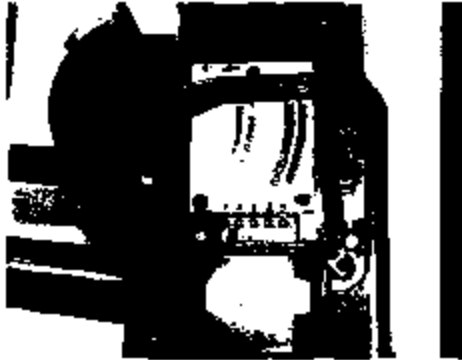
Switch Tracks # G2I28AU137A82912



Potentiometer Tracks # G2I28AU137A82912

Attachment
Page 1 of 2

PC83-044 11508



Accelerator Pedal # G2E28AU137A82915



Switch Tracks # G2H30AU137A92139



Potentiometer Tracks # G2H30AU137A92139

Accelerator Pedal # G2128AU137A82930



Switch Tracks # G2128AU137A82930



Potentiometer Tracks # G2128AU137A82930



Central Laboratory
15000 Century Drive
Dearborn, MI 48120-1267
FAX (313) 322-1814

Report 31079b

July 11, 2003

To: Greg West (313) 84-59401 (313) 32-24985 FAX
From: M. C. Hega (313) 33-78398
Subject: Electronic Accelerator Pedals with Grease
Part Number: 2C34-8F838-DA
Supplier: Teleflex

Received: Two samples of grease labeled as Nyogel 774 and Nye Instrument Grease 705D were received on May 12, 2003. Two electronic accelerator pedal assemblies were also received on May 12, 2003. They were labeled as follows:
Serial Number G2I28AU137 A82912
Serial Number G2I28AU137 A82930
Thirteen additional samples were received on June 10, 2003. They were labeled as follows:
Serial Number G2F28AU137 A72508
Serial Number G2G10AU137 A76986
Serial Number G2G16AU137 A77100
Serial Number G2H26AU137 A90489
Serial Number G2H26AU137 A90783
Serial Number G2H30AU137 A82139
Serial Number G2H30AU137 A82153
Serial Number G2H30AU137 A82189
Serial Number G2I28AU137 A82909
Serial Number G2I28AU137 A82911
Serial Number G2I28AU137 A82915
Serial Number on Pedal 2E31AU137 R15400 (rejected)
Yellow Tag Number D201.D1E09

Object: Perform requested analysis for information. Provide photographic documentation.

Data and Analysis:

Molecular Characterization
(FTIR, Microscopic, Qualitative)

Greases

Spectra of Nyogel 774 grease as received are characteristic of silica filled hydrocarbon.

Spectra of Nye 706 D grease as received are characteristic of lithium soap filled synthetic ester based oil.

Spectra of the methylene chloride solubles of Nye 706 D grease are characteristic of synthetic ester based oil.

**Data and Analysis:****Elemental Analysis, % by weight¹**
(Rigaku X-ray Fluorescence)

	Switch Grease	Rub Bar Grease	Ceramic Substrate
Aluminum	15	0.2	98
Calcium	12	2.7	0.2
Chlorine	—	0.8	—
Copper	2.4	0.03	—
Chromium	5.2	0.2	—
Iron	10	0.1	0.1
Magnesium	—	—	0.1
Phosphorus	—	0.1	—
Silicon	26	97	2.0
Sodium	5.9	0.07	—
Sulfur	24	1.0	—

See Attachment 1 for detailed analysis of components.

¹ Results are normalized to 100% based upon detected elements. (The instrument cannot detect elements lighter than fluorine.) They do not include contributions from elements not listed above.

The precision and accuracy of this technique has not been established.

Contributor: Sean Foradori, V. Cooper, T. Munle, P. McNulty

Concur:

Daniel N. DiGrigorio

Dan DiGrigorio, Supervisor
Chemistry Section

By:

Mary Haga

Mary C. Haga (MHAGA)
Product Materials Engineer

Enclosures: Attachment 1 (Data Table); Photographs 19 pages

	<i>Methylene Chloride Solubles</i>				<i>As Received</i>
	<i>Weight of Solubles, grams</i>		<i>Molecular Characterization (FTIR)</i>		<i>Elemental Analysis (EDAX)¹</i>
	<i>Switch Tracks</i>	<i>Potentiometer Tracks</i>	<i>Switch Tracks²</i>	<i>Potentiometer Tracks</i>	
<i>Warranty Return Samples</i>					
D201.01E09	0.0101	0.0016		Synthetic ester based oil, similar to base oil of Nys 706D grease	Evidence of elements present in the switch grease (sulfur, copper and iron) present near the switch tracks on the side near the barrier. No spectral evidence of the material on the barrier or on the potentiometer side of the barrier.
2E31AU137 R15400	0.0023	0.0006		Synthetic ester based oil, similar to base oil of Nys 706D grease	Evidence of elements present in the switch grease (sulfur, copper and iron) present near the switch tracks on the side near the barrier. No spectral evidence of the material on the barrier or on the potentiometer side of the barrier.
<i>Unused Samples</i>					
G2F26AU137 A72505	0.0027	0.0008	Synthetic ester based oil, similar to base oil of Nys 706D grease	Synthetic ester based oil, similar to base oil of Nys 706D grease	Spectral evidence of material on the barrier as well as near the switch tracks. The material bridged the barrier but shows no evidence of sulfur, copper or iron. It is possible that the percentage of mineral oil and lithium are relatively high in the material. Mineral oil and lithium can not be detected by EDAX.
G2G10AU137 A75935	0.0040	0.0005	Synthetic ester based oil, similar to base oil of Nys 706D grease	Synthetic ester based oil, similar to base oil of Nys 706D grease	Spectral evidence of material on the barrier as well as near the switch tracks. The material bridged the barrier but shows no evidence of sulfur, copper or iron. It is possible that the percentage of mineral oil and lithium are relatively high in the material. Mineral oil and lithium can not be detected by EDAX.
G2G16AU137 A77100	0.0184	0.0004	Synthetic ester based oil, similar to base oil of Nys 706D grease	Synthetic ester based oil, similar to base oil of Nys 706D grease	Evidence of elements present in the switch grease (sulfur, copper and iron) present near the switch tracks on the side near the barrier. No spectral evidence of the material on the barrier or on the potentiometer side of the barrier.

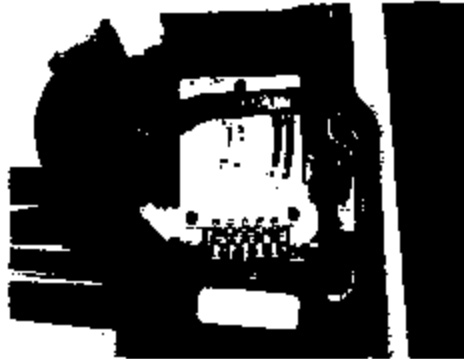
¹ Energy Dispersive X-ray Fluorescence, this test was performed on samples which appeared to show the largest amount of migration from the photographs.

² Molecular Characterization was performed only on a representative sample of the switch tracks

<i>Methylene Chloride Solubles</i>				
		<u>Weight of Solubles, grams</u>	<u>Molecular Characterization (FTIR)</u>	
<i>Unused Samples</i>				
	<u>Switch Tracks</u>	<u>Potentiometer Tracks</u>	<u>Switch Tracks³</u>	<u>Potentiometer Tracks</u>
G2H26AU137 A90489	0.0056	0.0005	Synthetic ester based oil, similar to base oil of Nye 706D grease	Synthetic ester based oil, similar to base oil of Nye 706D grease
G2H26AU137 A90793	0.0047	0.0009	Synthetic ester based oil, similar to base oil of Nye 706D grease	Synthetic ester based oil, similar to base oil of Nye 706D grease
G2H30AU137 A92139	0.0009	0.0003		Synthetic ester based oil, similar to base oil of Nye 706D grease
G2H30AU137 A92153	0.0008	0.0004		Synthetic ester based oil, similar to base oil of Nye 706D grease
G2H30AU137 A92189	0.0009	0.0009		Synthetic ester based oil, similar to base oil of Nye 706D grease
G2I28AU137 A82909	0.0002	0.0004	Synthetic ester based oil, similar to base oil of Nye 706D grease	Synthetic ester based oil, similar to base oil of Nye 706D grease and hydrocarbon, possibly from the base oil of Nyogel 774 grease ⁴
G2I28AU137 A82911	0.0005	0.0004		Insufficient Sample
G2I28AU137 A82912	0.0002	0.0002	Synthetic ester based oil, similar to base oil of Nye 706D grease	Synthetic ester based oil, similar to base oil of Nye 706D grease
G2I28AU137 A82915	0.0007	0.0001		Synthetic ester based oil, similar to base oil of Nye 706D grease
G2I28AU137 A82930	0.0002	0.0001		Insufficient Sample

³ Molecular Characterization was performed only on a representative sample of the switch tracks

⁴ The Nyogel 774 grease may have been dislodged from the rub bar when disassembling the part



Accelerator Pedal Yellow Tag # D201.01E09



Switch Tracks Bottom Half Yellow Tag # D201.01E09



Switch Tracks Top Half Yellow Tag # D201.01E09



Switch Tracks Metal Contacts Yellow Tag # D201.01E09

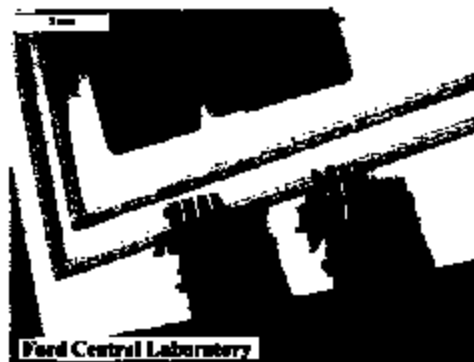


Potentiometer Tracks Bottom Half Yellow Tag # D201.01E09

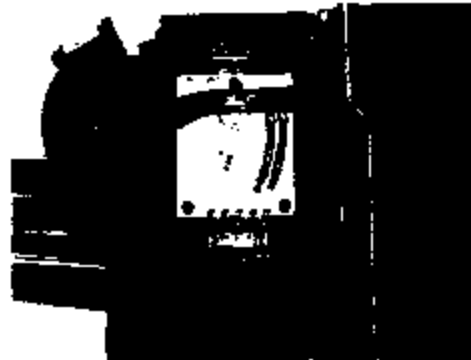


Potentiometer Tracks Top Half Yellow Tag # D201.01E09

31079



Potentiometer Tracks Metal Contacts Yellow Tag # D201.01E09



Accelerator Pedal Serial Number on Pedal G2E31AU137R15400 (Rejected)



Ford Central Laboratory

Switch Tracks Bottom Half Serial Number on Pedal G2E31AU137R15400 (Rejected)



Ford Central Laboratory

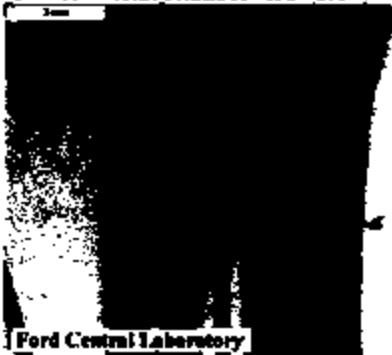
Switch Tracks Top Half Serial Number on Pedal G2E31AU137R15400 (Rejected)



Switch Tracks Metal Contacts Serial Number on Pedal G2E31AU137R15400 (Rejected)



Potentiometer Tracks Bottom Serial Number on Pedal G2E31AU137R15400 (Rejected)

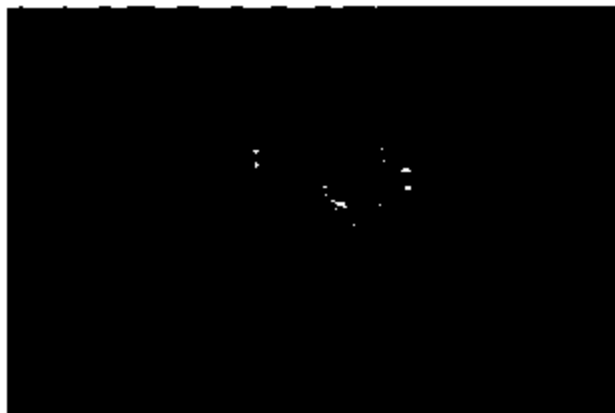


Potentiometer Tracks Top Half Serial Number on Pedal G2E31AU137R15400 (Rejected)

31079



Potentiometer Tracks Metal Contacts Serial Number on Pedal Q2E31AU137R15400
(Rejected)



Accelerator Pedal # G2I28AU137A82912

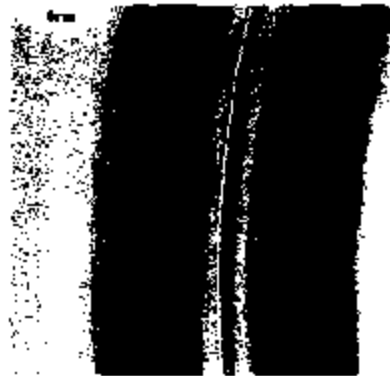


Switch Tracks # G2I28AU137A82912



Potentiometer Tracks # G2I28AU137A82912

Accelerator Pedal # G2I28AU137A82912



Switch Tracks # G2I28AU137A82912



Potentiometer Tracks # G2I28AU137A82912

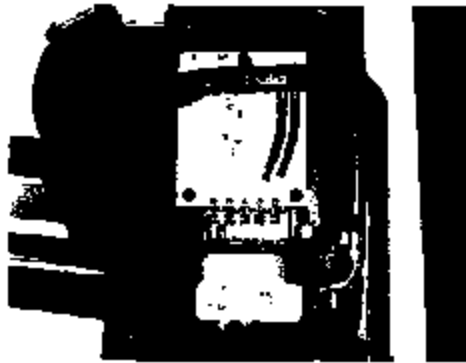
Accelerator Pedal # G2I28AU137A82930



Switch Tracks # G2I28AU137A82930



Potentiometer Tracks # G2I28AU137A82930

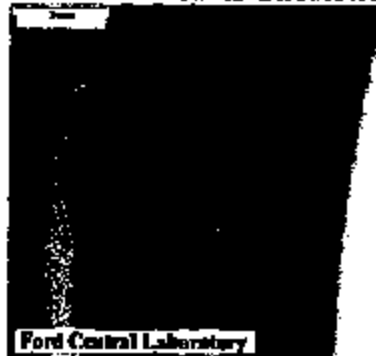


Accelerator Pedal # G2F26AU137A72506



Ford Control Laboratory

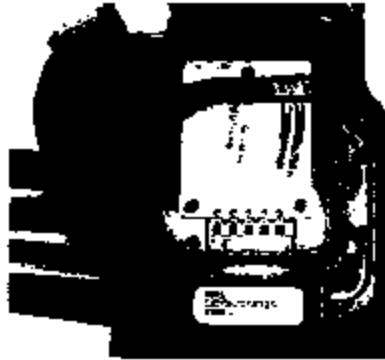
Switch Tracks # G2F26AU137A72506



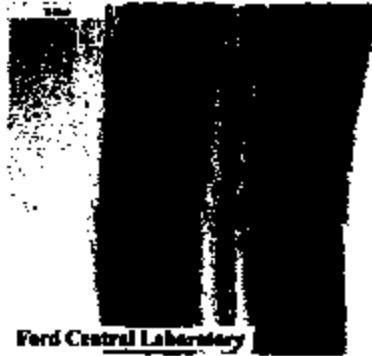
Ford Control Laboratory

Potentiometer Tracks # G2F26AU137A72506

31079



Accelerator Pedal # G2G10AU137A75935



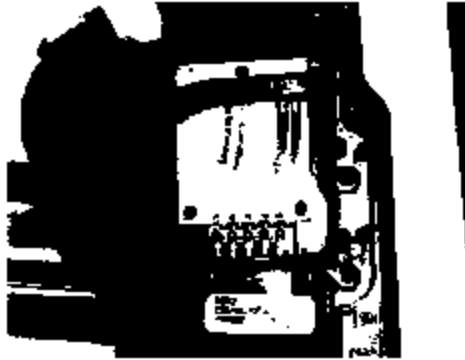
Ford Central Laboratory

Switch Tracks # G2G10AU137A75935

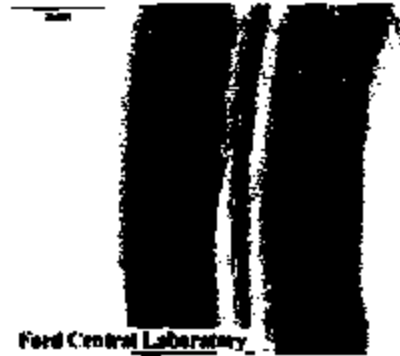


Ford Central Laboratory

Potentiometer Tracks # G2G10AU137A75935



Accelerator Pedal # G2G16AU137A77100



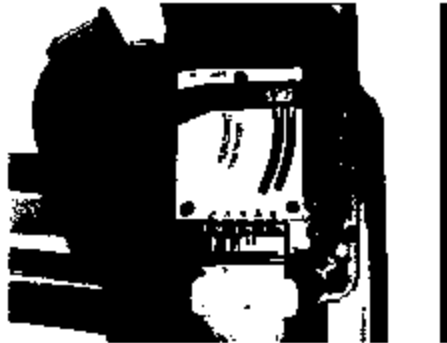
Ford Central Laboratory

Switch Tracks # G2G16AU137A77100



Ford Central Laboratory

Potentiometer Tracks # G2G16AU137A77100



Accelerator Pedal # G2H26AU137A90489



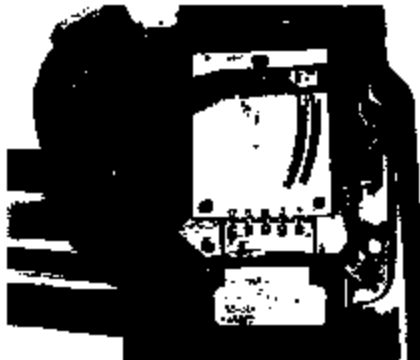
Ford Control Laboratory

Switch Tracks # G2H26AU137A90489



Ford Control Laboratory

Potentiometer Tracks # G2H26AU137A90489



Accelerator Pedal # G2H26AU13790793



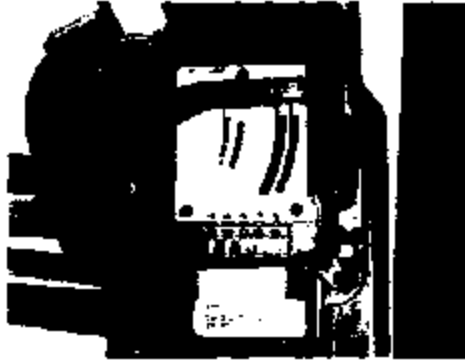
Ford Central Laboratory

Switch Tracks # G2H26AU13790793



Ford Central Laboratory

Potentiometer Tracks # G2H26AU13790793



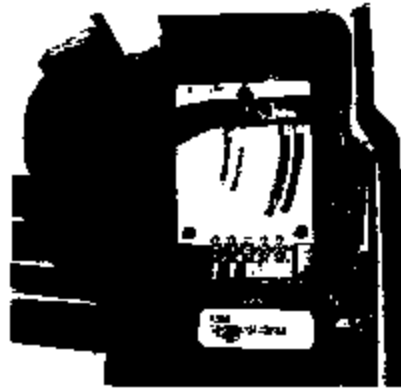
Accelerator Pedal # G2H30AU137A92139



Switch Tracks # G2H30AU137A92139



Potentiometer Tracks # G2H30AU137A92139

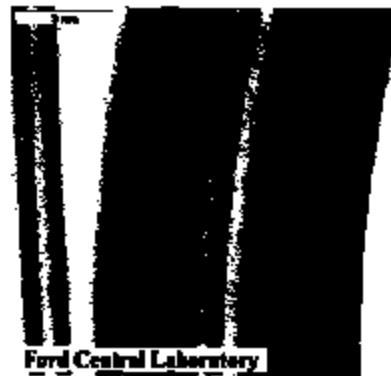


Accelerator Pedal # G2H30AU137A92153



Ford Central Laboratory

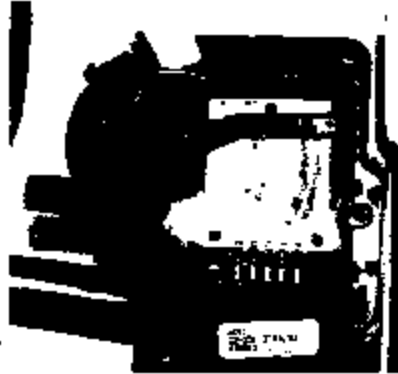
Switch Tracks # G2H30AU137A92153



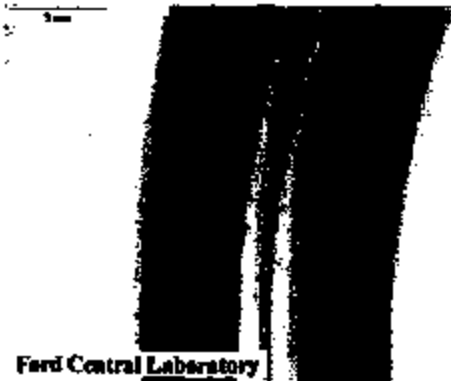
Ford Central Laboratory

Potentiometer Tracks # G2H30AU137A92153

31079



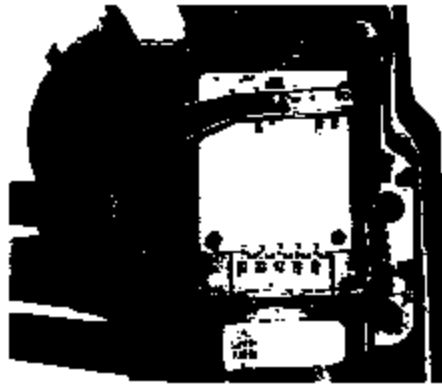
Accelerator Pedal # G2H30AU137A92189



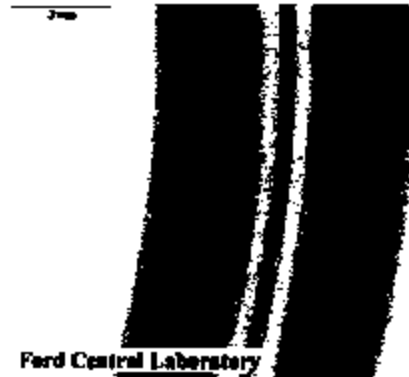
Switch Tracks # G2H30AU137A92189



Potentiometer Tracks # G2H30AU137A92189



Accelerator Pedal # G2I28AU137A82909



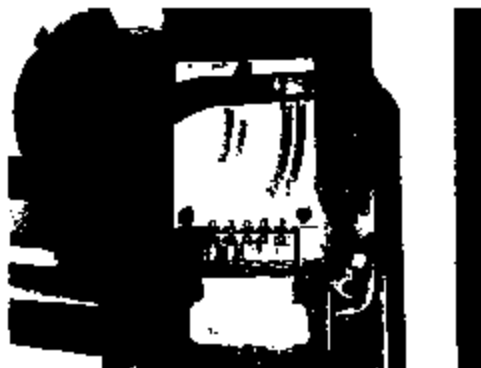
Ford Central Laboratory

Switch Tracks # G2I28AU137A82909



Ford Central Laboratory

Potentiometer Tracks # G2I28AU137A82909



Accelerator Pedal # G2I28AU137A82911

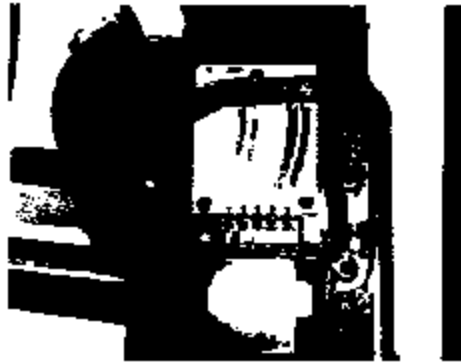


Ford Central Laboratory

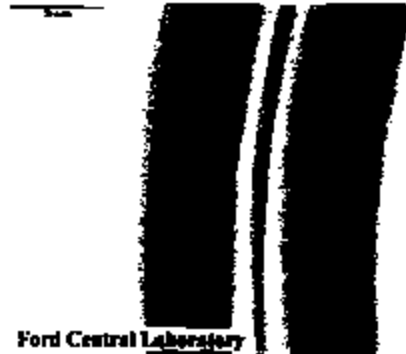
Switch Tracks # G2I28AU137A82911



Potentiometer Tracks # G2I28AU137A82911



Accelerator Pedal # G2I28AU137A82915



Ford Central Laboratory

Switch Tracks # G2H30AU137A92139



Ford Central Laboratory

Potentiometer Tracks # G2H30AU137A92139

C. WWW dealer. Ford can / spreader
get access to

GPLUS

2001 OPTIONAL

STANDARD

ACCEL. W

~~EXT. DIESEL~~

std

Todd
Lerner
Richard
CACIOPPO

236K

63.4K

P131

V187

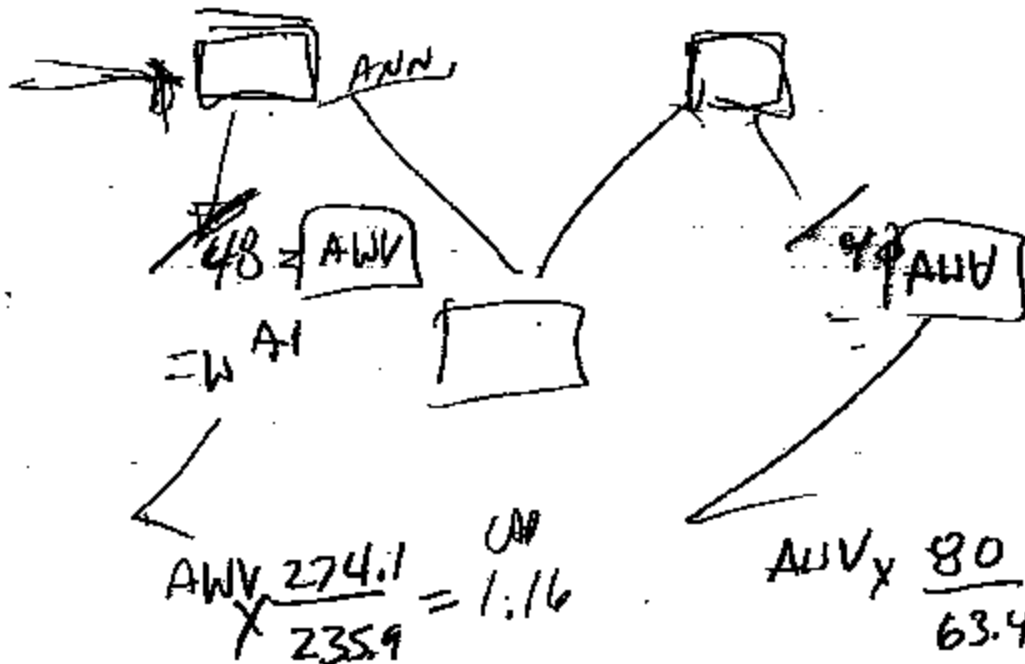
AUTO MAN
71% 29%

AUTO
100%

PEOAL

DIESEL GAS
59% 41%

DIESEL GAS
14% 86%



Burrows, Jim (J.A.)

From: Burrows, Jim (J.A.)
Sent: Wednesday, February 19, 2003 1:51 PM
To: Wnuk, John (J.G.)
Subject: FW: ETC pedal assembly - warranty data

Jim Burrows

6-Sigma Black Belt Candidate
Global Chassis Commodity Management
jburrow3@ford.com
Phone: (313) 337-2939; Fax: (313) 323-2317

-----Original Message-----

From: Maurin, Pete (P.W.)
Sent: Tuesday, January 21, 2003 12:57 PM
To: Burrows, Jim (J.A.); McNamey, Dave (D.T.)
Cc: Shields, Dennis (D.A.); Cary, Gene (G.E.)
Subject: RE: ETC pedal assembly - warranty data

Attached are the warranty R/1000 rates for Teleflex and Williams supplied pedal/sensors for the part numbers identified. If we can identify the supplier/type of the other part numbers shown, I'll add them to the charts.

Note: There were 115 additional repairs which did not include part number prefix or suffix, consequently are not readily identifiable as to supplier.



Xcel9836 Jan 17
03.xls

Regards,

Pete Maurin

Technical Specialist - Reliability/Robustness
Powertrain Quality
phone: (313) 32-20958 fax: (313) 24-88400

-----Original Message-----

From: Burrows, Jim (J.A.)
Sent: Friday, January 17, 2003 2:45 PM
To: Maurin, Pete (P.W.); McNamey, Dave (D.T.)
Cc: Shields, Dennis (D.A.)
Subject: RE: ETC pedal assembly - warranty data

Dennis filled out the sheet for the top hitters and verified your info. We added Teleflex in three places.

Thanks Dennis.

Supplier	Part Number	Vehicle	Repairs
----------	-------------	---------	---------

Teleflex	XCZZ-AA	ECONOLINE	78
	F81Z-AB	F250HD/350/450/550	5
	F81Z-AB	F 850/750	0
	F81Z-AAA	F 850/750	59
	F5TZ-A,	F250HD/350/450/550	1
	2C7Z-DA	F250HD/350/450/550	1
Teleflex Adj	2C3Z-DE	EXCURSION	101
Teleflex Adj	2C3Z-DE	F250HD/350/450/550	466
Teleflex Adj	2C3Z-DE	ECONOLINE	1
Teleflex	2C3Z-DA	EXCURSION	776
Teleflex	2C3Z-DA	F250HD/350/450/550	4803
	2C2Z-AA	ECONOLINE	2
	2C2Z-AA	F250HD/350/450/550	1
Williams Fixed	1C3Z-BA	F250HD/350/450/550	1291
Williams Fixed	1C3Z-BA	F 850/750	5
Williams Fixed	1C3Z-BA	EXCURSION	3
	1C3Z-AA	F250HD/350/450/550	1

Jim Burrows

6-Sigma Black Belt Candidate
 Global Chassis Commodity Management
 jburrow3@ford.com
 Phone: (313) 337-2939; Fax: (313) 323-2317

-----Original Message-----

From: Burrows, Jim (J.A.)
 Sent: Thursday, January 16, 2003 5:44 PM
 To: Shields, Dennis (D.A.)
 Cc: Maurin, Pete (P.W.); McNamey, Dave (D.T.)
 Subject: RE: ETC pedal assembly - warranty data

You still do pedals don't you? Can you decipher the service part numbers below and tell us who are the suppliers?

The suppliers should be Williams for the fixed ETC pedal and Teleflex for the adjustable ETC pedals. Here are the production part numbers for the Excursion and the F250/350, both vehicles use the same part. These are the high warranty numbers and the main ones where we have interest:

- Williams fixed ETC pedal 1C34 - 9F836 - BA
- Teleflex adjustable ETC pedal 2C34 - 9F836 - DC

Let us know.

Jim Burrows

6-Sigma Black Belt Candidate
 Global Chassis Commodity Management
 jburrow3@ford.com
 Phone: (313) 337-2939; Fax: (313) 323-2317

-----Original Message-----

From: Maurin, Pete (P.W.)
 Sent: Thursday, January 16, 2003 2:44 PM
 To: McNamey, Dave (D.T.); Burrows, Jim (J.A.)
 Subject: RE: ETC pedal assembly - warranty data

I have a warranty report that includes the following part numbers by applications. They are service, not engineering part numbers.

We are verifying the correct vehicle volumes so the R/1000s divisors are accurate. Are you able to determine

which suppliers and part numbers represent fixed vs adjustable and either the actual volume of the lease rate or the adjustable option where available? We don't believe that the Warranty system can distinguish how many vehicles had the adjustable option.

There are some combinations with only a few repairs, we are questioning whether the part numbers are valid or data entry errors. (Note this is for 2002 MY).

Supplier	Part Number	Vehicle	Repairs
Teleflex	XC2Z-AA	ECONOLINE	78
	F81Z-AB	F250HD/350/450/550	5
	F81Z-AB	F 850/750	0
	F81Z-AAA	F 850/750	58
	F5TZ-A	F250HD/350/450/550	1
	2C7Z-DA	F250HD/350/450/550	1
Teleflex Adj	2C3Z-DE	EXCURSION	101
Teleflex Adj	2C3Z-DE	F250HD/350/450/550	488
Teleflex Adj	2C3Z-DE	ECONOLINE	1
Teleflex	2C3Z-DA	EXCURSION	778
Teleflex	2C3Z-DA	F250HD/350/450/550	4803
	2C2Z-AA	ECONOLINE	2
	2C2Z-AA	F250HD/350/450/550	1
Williams Fixed	1C3Z-BA	F250HD/350/450/550	1281
Williams Fixed	1C3Z-BA	F 850/750	5
Williams Fixed	1C3Z-BA	EXCURSION	3
	1C3Z-AA	F250HD/350/450/550	1

Regards,

Pete Maurin

Technical Specialist - Reliability/Robustness
Powertrain Quality
phone: (313) 32-20958 fax (313) 24-86400

-----Original Message-----

From: McNamney, Dave (D.T.)
Sent: Thursday, January 16, 2003 12:23 PM
To: Maurin, Pete (P.W.)
Subject: FW: ETC pedal assembly - warranty data

Pete,

Were you able to provide any comparison data to Jim? Please let me know. Thanks!

Regards,

David McNamney
Powertrain Strategy & Business Office
POEE Bldg., MD#52 Cube 2K014
Phone: (313) 84-63176 Fax: (313) 33-76587
E-mail: dmcnamne@ford.com

-----Original Message-----

From: Burrows, Jim (J.A.)
Sent: Friday, January 10, 2003 12:57 PM
To: McNamney, Dave (D.T.); Maurin, Pete (P.W.)
Cc: Whruk, John (J.G.); Slachta, Joseph (J.F.)
Subject: RE: ETC pedal assembly - warranty data

Somehow I confused the part numbers. Here are the proper part numbers and suppliers:

- Williams fixed ETC pedal 1C34 - 9F836 - BA
- Teleflex adjustable ETC pedal 2C34 - 9F836 - DC

Let us know. We'd like to know which supplier is responsible for the warranty.

Jim Burrows

6-Sigma Black Belt Candidate
Global Chassis Commodity Management
jburrow3@ford.com
Phone: (313) 337-2939; Fax: (313) 323-2317

-----Original Message-----

From: Burrows, Jim (J.A.)
Sent: Thursday, December 19, 2002 1:13 PM
To: McNamney, Dave (D.T.)
Subject: RE: ETC pedal assembly business plan - warranty data

Here's the Teleflex part number. 1C34 - 9F836 - BA. I'd like to know how the breakdown between suppliers compares.

Jim Burrows

6-Sigma Black Belt Candidate
Global Chassis Commodity Management
jburrow3@ford.com
Phone: (313) 337-2939; Fax: (313) 323-2317

-----Original Message-----

From: McNamney, Dave (D.T.)
Sent: Monday, December 09, 2002 7:30 AM
To: Burrows, Jim (J.A.)
Subject: RE: ETC pedal assembly business plan - warranty data

Both....The adjustable pedal was introduced in the 2002MY so anything before that will be just fixed. The way the data was pulled, I don't believe we can separate out the adjustable pedal from the fixed. If you are interested, I can ask for a pull with the two separated (Please provide the P/N for adjustable pedal if you would like this pull). Just let me know! Thanks!

Regards,
David McNamney
Powertrain Strategy & Business Office
POEE Bldg., MD#52 Cube 2K014
Phone: (313) 84-63176 Fax: (313) 33-76587
E-mail: dmcnamn@ford.com

-----Original Message-----

From: Burrows, Jim (J.A.)
Sent: Friday, December 06, 2002 5:18 PM
To: McNamney, Dave (D.T.)
Subject: RE: ETC pedal assembly business plan - warranty data

Can you tell if this is the fixed pedal or the adjustable pedal or both?

Jim Burrows

6-Sigma Black Belt Candidate
Global Chassis Commodity Management

jbuzz3@ford.com
Phone: (313) 337-2939; Fax: (313) 323-2317

-----Original Message-----

From: McNamney, Dave (D.T.)
Sent: Thursday, December 05, 2002 12:27 PM
To: West, Gregory (G.S.); Brennan, Patrick (P.H.); Liposky, Lawrence (L.J.); Sheffield, Drew (D.L.); Whitt, John (J.G.); McNamney, Dave (D.T.); Burrows, Jim (J.A.); Conrad, James (J.A.)
Subject: ETC pedal assembly business plan - warranty data

Team,
attached is the warranty data I have on Pedal assy (9F836). If the document does not contain the info we need, or is not in the format we are looking for, please let me know (with specifics of what we need).

<< File: 9F836 V E DIESEL 94-03_120202.xls >>

Regards,
David McNamney
Powertrain Strategy & Business Office
POEE Bldg., MD#52 Cube 2K014
Phone: (313) 84-53176 Fax: (313) 33-78587
E-mail: drncname@ford.com

Report Info Status=Final Request Name=9F836 jan 17
 Data Selec Model Year Cost Category = All Vehicle Coverages / Cor
 Report Sel Report Nar Model Year=2002

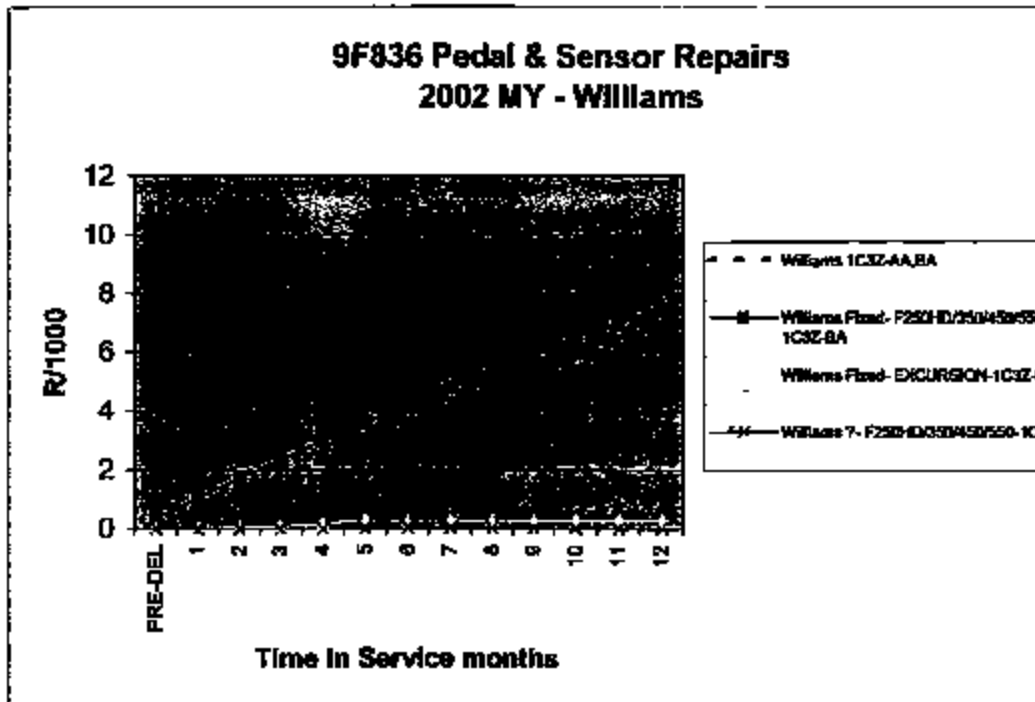
orig order	RANK	MOD YEAR LOGIC	Label
1		2002 Corporate	Teleflex 2C3Z-DA,DE
2	1	2002 Corporate	Teleflex- F250HD/350/450/550-2
3	2	2002 Corporate	Teleflex- EXCURSION-2C3Z-DA
4	3	2002 Corporate	Teleflex Adj- F250HD/350/450/550
5	4	2002 Corporate	Teleflex Adj- EXCURSION-2C3Z
6	5	2002 Corporate	not plotted, small sample sizes
16		2002 Corporate	
17	1	2002 Corporate	Teleflex- ECONOLINE-XCZZ-AA
18	2	2002 Corporate	not plotted, small sample sizes
19	3	2002 Corporate	not plotted, small sample sizes
7		2002 Corporate	Williams 1C3Z-AA,BA
8	1	2002 Corporate	Williams Fixed- F250HD/350/450
9	2	2002 Corporate	Williams Fixed- EXCURSION-1C
10	3	2002 Corporate	Williams ?- F250HD/350/450/550
11	4	2002 Corporate	not plotted, small sample sizes

			not plotted, unknown part number
12		2002 Corporate	
13	1	2002 Corporate	- F250HD/350/450/550-* - 9F838-
14	2	2002 Corporate	- EXCURSION-* - 9F836-* , L1
15	3	2002 Corporate	- ECONOLINE-* - 9F838-* , E1
20		2002 Corporate	not plotted, small sample sizes or
21	1	2002 Corporate	"
22	2	2002 Corporate	"
23	3	2002 Corporate	"
24		2002 Corporate	"
25	1	2002 Corporate	"
26	2	2002 Corporate	"
27	3	2002 Corporate	"
28		2002 Corporate	"
29	1	2002 Corporate	"
30	2	2002 Corporate	"
31	3	2002 Corporate	"
32		2002 Corporate	"
33	1	2002 Corporate	"
34	2	2002 Corporate	"
35	3	2002 Corporate	"

tractual[1,%,%]

Completior Job Size=4 Execution
 Engine [en] Tis (corporate) (typed)
 Order By 2: Value For F Min Divisor

Source????		Veh	REPAIRS	COSTS	CPRS
Teleflex 2C3Z-DA,DE	2C3Z-TOTAL	#VALUE!	5898	1109088	188.11
Teleflex	2C3Z-DA	F250HD/350/450	4645	870585.4	187.38
Teleflex	2C3Z-DA	EXCURSION	760	146624.8	192.93
Teleflex Adj	2C3Z-DE	F250HD/350/450	402	75418.28	187.6
Teleflex Adj	2C3Z-DE	EXCURSION	88	15461.77	187.07
Teleflex Adj	2C3Z-MI	ECONOLINE	0	0	0
	XC2Z-TOTAL	#VALUE!	78	25033.57	320.94
Teleflex	XC2Z-AA	ECONOLINE	78	25033.57	320.94
	XC2Z-MI	F250HD/350/450	0	0	0
	XC2Z-MI	EXCURSION	0	0	0
Williams 1C3Z-AA,BA	1C3Z-TOTAL	#VALUE!	1287	265039.4	209.19
Williams Fixed	1C3Z-BA	F250HD/350/450	1263	264368.9	209.32
Williams Fixed	1C3Z-BA	EXCURSION	3	510.09	170.01
Williams ?	1C3Z-AA	F250HD/350/450	1	162.41	162.41
Williams Fixed	1C3Z-MI	ECONOLINE	0	0	0



rs

^, F7

*- 9F836-TOTAL	#VALUE!		12170.31	105.83
- 9F836-, F7	F250HD/350/450		10378.37	101.75
- 9F836-, L1	EXCURSION		1523.87	138.53
- 9F836-, E1	ECONOLINE		268.07	134.04

r unknown part numbers

F81Z-TOTAL	#VALUE!	5	526.83	105.37
F81Z-AB	F250HD/350/450	5	526.83	105.37
F81Z-MI	ECONOLINE	0	0	0
F81Z-MI	EXCURSION	0	0	0
2C2Z-TOTAL	#VALUE!	3	792.76	264.25
2C2Z-AA	ECONOLINE	2	437.06	218.53
2C2Z-AA	F250HD/350/450	1	355.7	355.7
2C2Z-MI	EXCURSION	0	0	0
2C7Z-TOTAL	#VALUE!	1	46.48	46.48
2C7Z-DA	F250HD/350/450	1	46.48	46.48
2C7Z-MI	ECONOLINE	0	0	0
2C7Z-MI	EXCURSION	0	0	0
F5TZ-TOTAL	#VALUE!	1	401.83	401.83
F5TZ-A	F250HD/350/450	1	401.83	401.83
F5TZ-MI	ECONOLINE	0	0	0
F5TZ-MI	EXCURSION	0	0	0

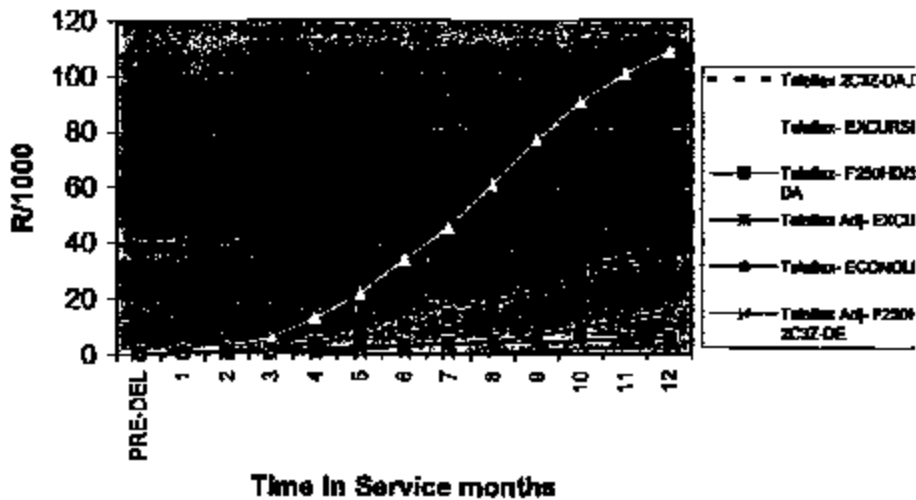
Precalc Prc Cut Off Date= Load Date= Currency E Generated By=GCURRY

<= 12

Cost Type= Orderby Cata Use Group Requested Reported C Requested Reported C Descriptions=Yes

CPUS	R1000S(12)	VEHICLES	MAX MIS	PRE-DEL	1	2	3	4
7.06	37.93	239761	16	0.18	0.45	0.84	2.11	4.3
6.11	32.92	228139	16	0.15	0.43	0.9	2	3.97
20.9	108.5	12690	16	0.95	1.58	2.93	6.15	13
0.65	3.49	226139	16	0	0	0.01	0.05	0.15
2.8	15.15	12690	16	0	0	0.16	0.4	1.27
0	0	20932	15					
0.13	0.39	259761	16	0.03	0.08	0.11	0.12	0.16
1.88	5.86	20932	15	0.43	1.05	1.4	1.55	2
0	0	226139	16					
0	0	12690	16					
1.39	8.61	259761	16	0.32	0.91	1.5	2.05	2.62
1.56	7.44	228139	16	0.36	1.05	1.72	2.34	2.99
0.05	0.27	12690	16	0	0	0.06	0.08	0.17
0	0.01	226139	16	0	0	0	0	0
0	0	20932	15					

9F836 Pedal & Sensor Repairs 2002 MY - Teleflex



020604301550-

RSION-1C3Z-BA

30460750-1C3Z-AA

0.07		259761	16	0.04	0.05	0.07	0.11	0.14
0.07		226139	16	0.05	0.06	0.08	0.11	0.15
0.25		12690	16	0	0	0	0	0.09
0.01		20932	15	0	0	0	0.1	0.1
0	0.03	259761	16	0	0	0.01	0.01	0.01
0	0.03	226139	16	0	0	0.01	0.01	0.01
0	0	20932	15					
0	0	12690	16					
0	0.01	259761	16	0	0	0	0.01	0.01
0.02	0.13	20932	15	0	0	0.05	0.05	0.05
0	0	226139	16	0	0	0	0	0
0	0	12690	16					
0	0.01	259761	16	0	0	0	0	0
0	0.01	226139	16	0	0	0	0	0
0	0	20932	15					
0	0	12690	16					
0.01	0.01	259761	16	0	0	0	0	0
0.01	0.01	226139	16	0	0	0	0	0
0	0	20932	15					
0	0	12690	16					

5	6	7	8	9	10	11	12	13
7.29	10.94	15.26	19.99	25.13	30.18	34.14	37.93	37.93
6.65	9.92	14.02	18.28	22.67	26.89	30.61	32.92	32.92
21.79	33.75	45.23	60.9	78.88	90.36	100.73	108.5	108.5
0.38	0.58	0.72	0.97	1.45	2.09	2.71	3.49	3.49
1.67	3.12	3.77	4.68	6.81	9.38	12.66	15.15	15.15
0.22	0.23	0.29	0.31	0.32	0.35	0.37	0.39	0.39
2.81	3.03	3.97	4.17	4.42	4.9	5.31	5.86	5.86
3.16	3.67	4.23	4.79	5.3	5.78	6.24	6.61	6.61
3.59	4.17	4.79	5.42	5.99	6.52	7.02	7.44	7.44
0.27	0.27	0.27	0.27	0.27	0.27	0.27	0.27	0.27
0.01	0.01	0.01	0.01	0.01	0.01	0.01	0.01	0.01

I 2C3Z-DA-DE
 I- EXCURSION-3C3Z-DA
 I-F280HD380480550-2C3Z-
 I A4- EXCURSION-3C3Z-DE
 I- EDONLINE-3C3Z-AA
 I A4- F280HD380480550-
 IE

0.2	0.29	0.37	0.43	0.47	0.55	0.62	0.67	0.67
0.21	0.3	0.37	0.44	0.48	0.55	0.6	0.66	0.66
0.19	0.41	0.61	0.81	0.81	1.23	1.74	1.74	1.74
0.1	0.1	0.1	0.1	0.1	0.1	0.1	0.1	0.1
0.01	0.01	0.01	0.03	0.03	0.03	0.03	0.03	0.03
0.01	0.01	0.01	0.03	0.03	0.03	0.03	0.03	0.03
0.01	0.01	0.01	0.01	0.01	0.01	0.01	0.01	0.01
0.05	0.06	0.13	0.13	0.13	0.13	0.13	0.13	0.13
0	0	0	0	0	0	0	0	0
0	0	0.01	0.01	0.01	0.01	0.01	0.01	0.01
0	0	0.01	0.01	0.01	0.01	0.01	0.01	0.01
0	0	0	0	0	0	0	0.01	0.01
0	0	0	0	0	0	0	0.01	0.01

14	15	16
37.93	37.93	37.93
32.92	32.92	32.92
108.5	108.5	108.5
3.49	3.49	3.49
15.15	15.15	15.15

0.39	0.39	0.39
5.86	5.88	

8.81	8.61	8.81
7.44	7.44	7.44
0.27	0.27	0.27
0.01	0.01	0.01

0.67	0.67	0.67
0.68	0.68	0.68
1.74	1.74	1.74
0.1	0.1	

0.03	0.03	0.03
0.03	0.03	0.03

0.01	0.01	0.01
0.13	0.13	
0	0	0

0.01	0.01	0.01
0.01	0.01	0.01

0.01	0.01	0.01
0.01	0.01	0.01

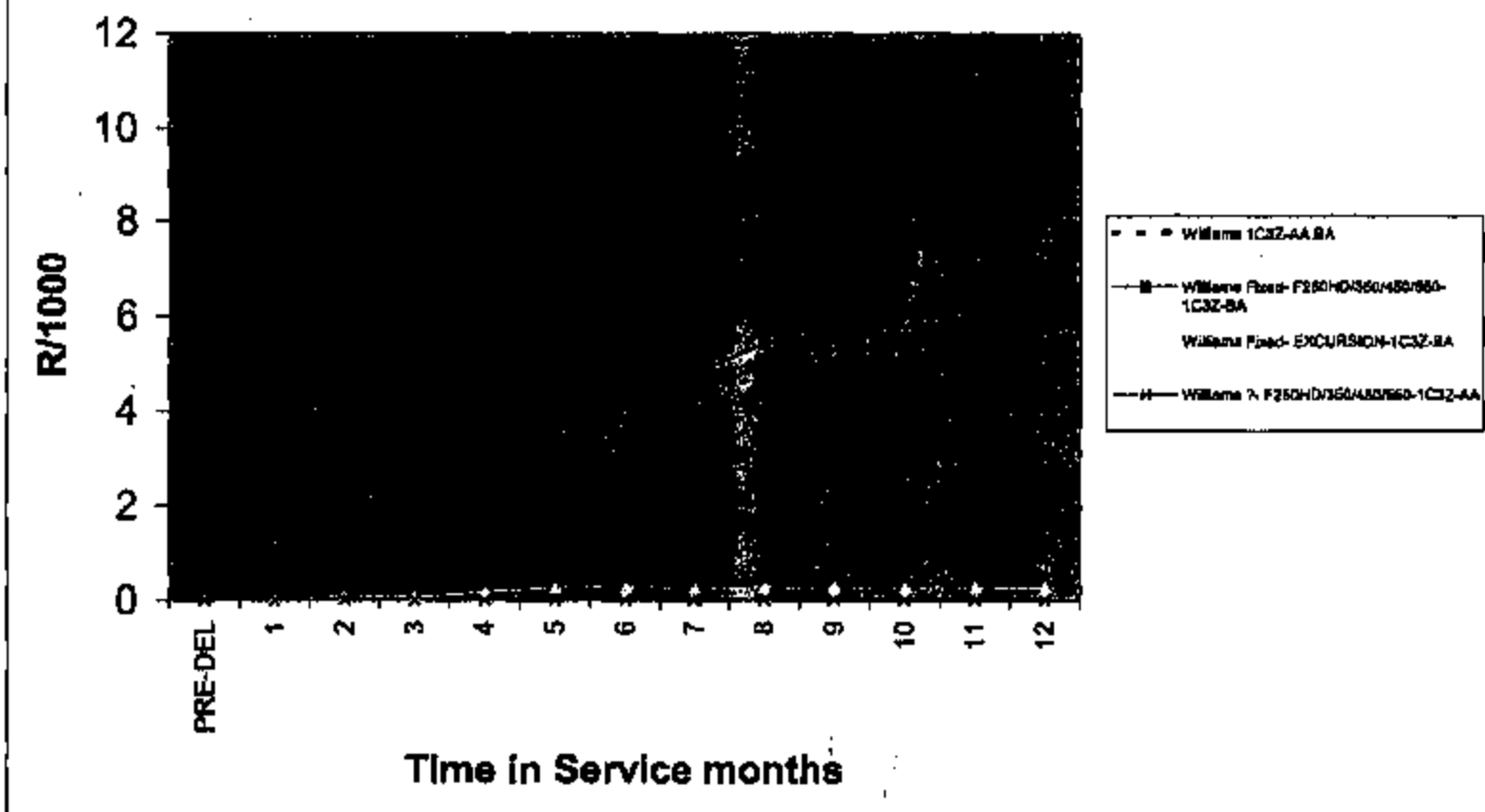
Supplier	Part Number	Vehicle	Repairs
Teleflex	XC2Z-AA	ECONOLINE	78
	F81Z-AB	F250HD/350/450/550	5
	F81Z-AB	F 650/750	0
	F81Z-AAA	F 650/750	59
	F5TZ-A,	F250HD/350/450/550	1
	2C7Z-DA	F250HD/350/450/550	1
Teleflex Adj	2C3Z-DE	EXCURSION	101
Teleflex Adj	2C3Z-DE	F250HD/350/450/550	468
Teleflex Adj	2C3Z-DE	ECONOLINE	1
Teleflex	2C3Z-DA	EXCURSION	776
Teleflex	2C3Z-DA	F250HD/350/450/550	4803
	2C2Z-AA	ECONOLINE	2
	2C2Z-AA	F250HD/350/450/550	1
Williams Fixed	1C3Z-BA	F250HD/350/450/550	1291
Williams Fixed	1C3Z-BA	F 650/750	5
Williams Fixed	1C3Z-BA	EXCURSION	3
	1C3Z-AA	F250HD/350/450/550	1

2002 MY AWS run 9F838 7.3L T/D Diesel 1/17/03

Sum of VEHICLES	Part Num Prefix (Causal), Part Num Base (Causal)					
	9F838 - PEDAL & SENSOR ASY	1C3Z, 9F836 - PEDAL & SENSOR ASY	2C2Z, 9F836 - PEDAL & SENSOR ASY	2C3Z, 9F836 - PEDAL & SENSOR ASY	2C7Z, 9F836 - PEDAL & SENSOR ASY	F5TZ, 9F836 - PEDAL & SENSOR ASY
Part Num Suffix (Causal), Vehicle Line AWS						
* E1 - ECONOLINE	20932					
* F7 - F250HD/350/450/550	226139					
* L1 - EXCURSION	12690					
A, F7 - F250HD/350/450/550						226139
AA, E1 - ECONOLINE			20932			
AA, F7 - F250HD/350/450/550		226139	226139			
AB, F7 - F250HD/350/450/550						
BA, F7 - F250HD/350/450/550		226139				
BA, L1 - EXCURSION		12690				
DA, F7 - F250HD/350/450/550				226139	226139	
DA, L1 - EXCURSION				12690		
DE, F7 - F250HD/350/450/550				226139		
DE, L1 - EXCURSION				12690		
MISSING, E1 - ECONOLINE		20932		20932	20932	20932
MISSING, F7 - F250HD/350/450/550						
MISSING, L1 - EXCURSION			12690		12690	12690
TOTAL	259761	259761	259761	259761	259761	259761

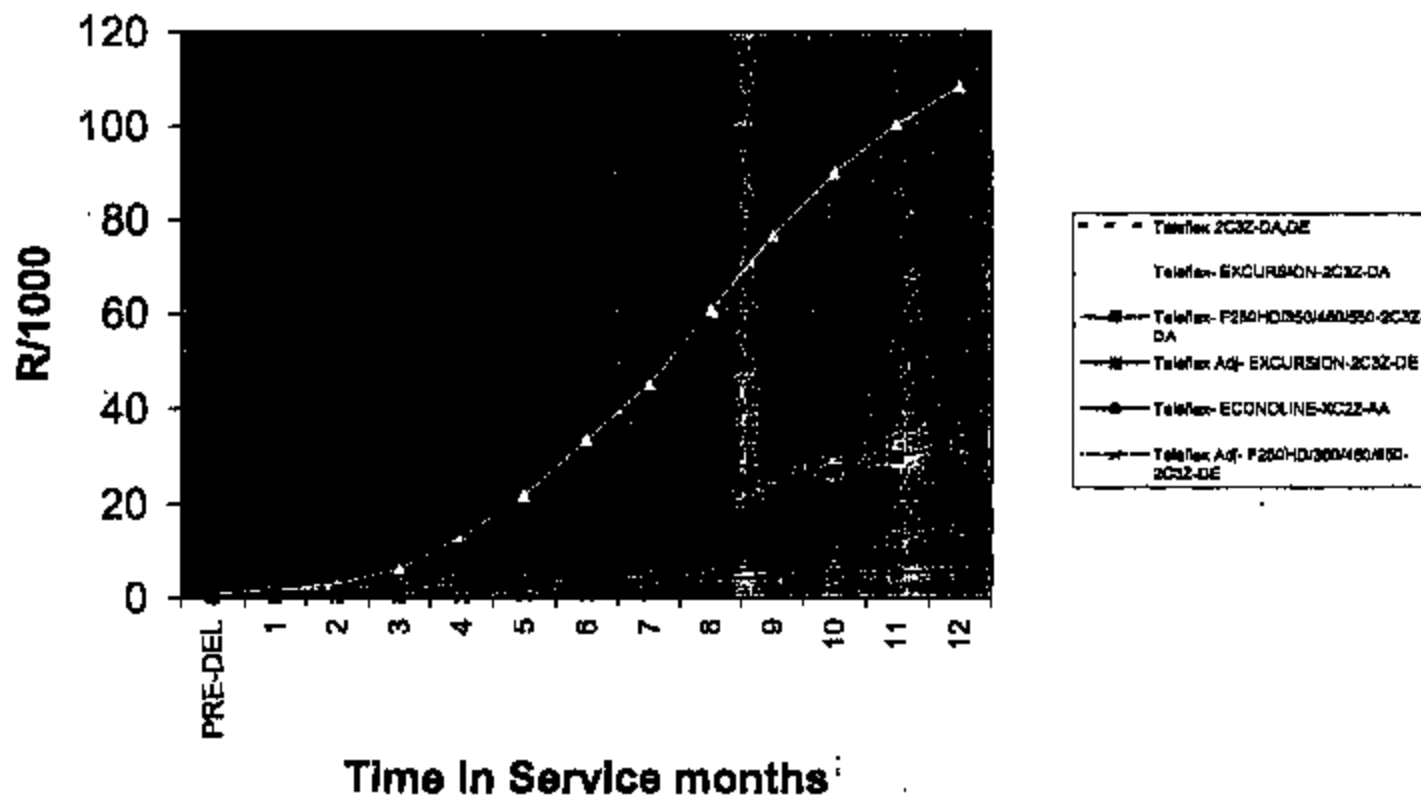
			F81Z, 9F836 - PEDAL & SENSOR ASY
			XC2Z, 9F836 - PEDAL & SENSOR ASY
		20832	
		228139	
	20832		
	228139		
	12890	12890	
	268761	268761	

9F836 Pedal & Sensor Repairs 2002 MY - Williams



F250-944 23815

9F836 Pedal & Sensor Repairs 2002 MY - Teleflex



Supplier	Part Number	Vehicle	Repairs
Teleflex	XC2Z-AA	ECONOLINE	78
	F81Z-AB	F250HD/350/450/550	5
	F81Z-AB	F 850/750	0
	F81Z-AAA	F 850/750	59
	F5TZ-A	F250HD/350/450/550	1
	2C7Z-DA	F250HD/350/450/550	1
Teleflex Adj	2C3Z-DE	EXCURSION	101
Teleflex Adj	2C3Z-DE	F250HD/350/450/550	466
Teleflex Adj	2C3Z-DE	ECONOLINE	1
Teleflex	2C3Z-DA	EXCURSION	778
Teleflex	2C3Z-DA	F250HD/350/450/550	4803
	2C2Z-AA	ECONOLINE	2
	2C2Z-AA	F250HD/350/450/550	1
Williams Fixed	1C3Z-BA	F250HD/350/450/550	1291
Williams Fixed	1C3Z-BA	F 850/750	5
Williams Fixed	1C3Z-BA	EXCURSION	3
	1C3Z-AA	F250HD/350/450/550	1

2002 MY AWS run 9F838 7.3L T/D Diesel 1/17/03

Sum of VEHICLES	Part Num Prefix (Causal), Part Num Base (Causal)					
Part Num Suffix (Causal), Vehicle Line AWS	0F838 - PEDAL & SENSOR ASY	1C3Z, 9F838 - PEDAL & SENSOR ASY	2C2Z, 9F838 - PEDAL & SENSOR ASY	2C3Z, 9F838 - PEDAL & SENSOR ASY	2C7Z, 9F838 - PEDAL & SENSOR ASY	F6TZ, 9F838 - PEDAL & SENSOR ASY
* E1 - ECONOLINE	20832					
* F7 - F250HD/350/450/550	228139					
* L1 - EXCURSION	12690					
A, F7 - F250HD/350/450/550						228139
AA, E1 - ECONOLINE			20832			
AA, F7 - F250HD/350/450/550		228139	228139			
AB, F7 - F250HD/350/450/550						
BA, F7 - F250HD/350/450/550		228139				
BA, L1 - EXCURSION		12690				
DA, F7 - F250HD/350/450/550				228139	228139	
DA, L1 - EXCURSION				12690		
DE, F7 - F250HD/350/450/550				228139		
DE, L1 - EXCURSION				12690		
MISSING, E1 - ECONOLINE		20832		20832	20832	20832
MISSING, F7 - F250HD/350/450/550						
MISSING, L1 - EXCURSION			12690		12690	12690
TOTAL	259761	259761	259761	259761	259761	259761

	F81Z, 9F836 - PEDAL & SENSOR ASY	
		20932
228139		
20932		
		228139
12690	12690	
259761	259761	