

PE03-044

FORD

5/13/2005

APPENDIX I

BOOK 12 OF 28

PART 2 OF 4

Tr. #	Area Of A- No. of	PO# Name Comp Ref o. r.	Dealer Name And Phone	How Made Of	How On Of	Used On Of	State	R. For Code	UTM Code	Amount (max) of Limit Contract	Tr. Rate %	RR Rate %	Comp. Rate %	Maximum / Load %
Y	282-241250	2022 - WFM - DA	MIKE NAUGHTON FORD INC. (303-241250)	DET	2022	2022	COLO	211	811-POWER TRAIN		12			** Row 818 cancelled ** Only 2022 status displayed
Y	282-232254	2022 - WFM - DA	LEE FINEZ FORD INC. (303-232254)	DET	2022	218	ARIZONA	211	811-POWER TRAIN		12			** Row 818 cancelled ** Only 2022 status displayed
Y	282-221450	2022 - WFM - DA	FORD COUNTRY OF LEWISVILLE (714- 221450)	DET	2022	218	TEXAS	211	811-POWER TRAIN		12			** Row 818 cancelled ** Only 2022 status displayed
Y	212-221111	2021 - WFM - DA	MARVIN FORD SALES (714-221111)	DET	2021	218	CALIFORNIA	211	811-POWER TRAIN		12			** Row 818 cancelled ** Only 2022 status displayed
Y	282-221201	2021 - WFM - DA	BO HIBBLEY FORD INC (916-221201)	DET	2021	218	UTAH	211	811-POWER TRAIN		12			** Row 818 cancelled ** Only 2022 status displayed

File No.	Area Ct - Ph No.	Fed Name Case Pref	Dealer Name and Address	Year Motor Ct	Motor Size Ct	Load Ct	Ch Ct	Design	Stator Data	VOLTS	Phase	Watt (min) x Load - Qty/Sec	Vol Rate Ltd	Ph Rate Ltd	Equip-Stock used	Insulation (Load Ct)
Y	218-2411	2002 - 1000 - DA	WORLD EQUINE PRODUCTS INC (218-2411)	1 FT	2000W	200		THUNDER	INDIA	611	611-POWER TRAIN		1 R	R	** New Unit assembled ** Only 2000 motor displayed	
Y	263-1744	2002 - 1000 - DA	WILLIAM MOTOR COMPANY (263-1744)	1 FT	2000W	150	1000-48		COLORADO	611	611-POWER TRAIN		1 R	R	** New Unit assembled ** Only 2000 motor displayed	
Y	261-3722	2002 - 1000 - DA	STONEMAN MOTOR INC (261-3722)	1 FT	2000W	410		Colony	NORTH DAKOTA	611	611-POWER TRAIN		1 R	R	** New Unit assembled ** Only 2000 motor displayed	
Y	219-3453	2002 - 1000 - DA	COLBERT FORD INC (219-3453)	1 FT	2000W	440	1000-48		TEXAS	604	604-ELECTRICAL		1 R	R	** New Unit assembled ** Only 2000 motor displayed	
Y	263-1084	2002 - 1000 - DA	CLAPPER MOTOR CO (263-1084)	1 FT	2000W	210	1000-48		GEORGIA	611	611-POWER TRAIN		1 R	R	** New Unit assembled ** Only 2000 motor displayed	
Y	263-7252	2002 - 1000 - DA	ENSON MOTOR CO (263-7252)	1 FT	2000W	400		Colony	MONTANA	611	611-POWER TRAIN		1 R	R	** New Unit assembled ** Only 2000 motor displayed	
Y	263-1011	2002 - 1000 - DA	MCALBY FORD MICHIGAN (263-1011)	1 FT	2000W	470	1000-48		CALIFORNIA	611	611-POWER TRAIN		1 R	R	** New Unit assembled ** Only 2000 motor displayed	

Tr. File	Area Cl. / Tr. Name	Pub. Unit / Gov. Prof.	Owner Name / Job Title	Was. Motor Cl.	Who. Reg. Cl.	Land Pl. / Cr. / M. / Section	St. / Pwr. / Date	NET / Cr. / Date	Amount / (/) / 7 / Last - / Query / Temp.	Tr. State / Ind.	Tr. Sect. / Ind.	Query / Tr. / Ind.	Comments / C. / Last / Cl.
Y	112-12200	2035 - W'ASH - DA	LEF JOHNSON FORD TRUCK CITY (FID 112200)		EST	2035/01 4450 03/AM	TEXAS	011	EST-POWER TRAIN				** New Unit annotated ** Only 2035 of this equipment
N	092-27111	2035 - W'ASH - DA	WELSONS FORD (FID-27111)		EST	2035/01 4950 Warm Dy	CALIFORNIA	011	EST-POWER TRAIN				** New Unit annotated ** Only 2035 status annotated
Y	100-274281	2035 - W'ASH - DA	SANTERNA MARIA MOTOR (FID-274281)		EST	2035/01 5430 Warm Dy	CALIFORNIA	011	EST-POWER TRAIN				** New Unit annotated ** Only 2035 status annotated
Y	010-04777	2035 - W'ASH - DA	GRLEY FORD (FID-04777)		EST	2035/01 5630 Warm Dy	CALIFORNIA	011	EST-POWER TRAIN				** New Unit annotated ** Only 2035 of this equipment
Y	140-04289	2035 - W'ASH - DA	SHENANDOAH FORD (FID-04289)		EST	2035/01 5830 Trenching	CALIFORNIA	011	EST-POWER TRAIN				** New Unit annotated ** Only 2035 of this equipment

File No.	Case No.	Case Name	Case Description	Case Status	Case Date	Case Location	Case Type	Case Category	Case Sub-Category	Case Priority	Case Assigned To	Case Assigned Date	Case Closed Date	Case Resolution
Y	04-10012	2001 - 07/01 - 01	HARVEST FORD LINCOLN-MERCURY (811-884310)	ST	2001/07/01	INDIAN	ST	ST	ST	ST	ST			** New Bank associated ** Only 2000 claims allowed
Y	04-10013	2001 - 07/01 - 01	HARVEST FORD LINCOLN-MERCURY (811-884310)	ST	2001/07/01	INDIAN	ST	ST	ST	ST	ST			** New Bank associated ** Only 2000 claims allowed
Y	04-10014	2001 - 07/01 - 01	CEOLATION (811-884310)	ST	2001/07/01	INDIAN	ST	ST	ST	ST	ST			** New Bank associated ** Only 2000 claims allowed
Y	04-10015	2001 - 07/01 - 01	FORD FORD INC. (811-884310)	ST	2001/07/01	INDIAN	ST	ST	ST	ST	ST			** New Bank associated ** Only 2000 claims allowed

PC03-004 4087

Tr. File	Area Of City Name	Part Name Code Pref	Dealer Name And Phone	Year Make Ctl	Year Reg Ctl	Year Tr	Dr Ctl	Equip	St Power Equip	NET	Net Date	Amount (Cash) + Limit - Downy Total	Net Date Reg	Net Date Pref	Downy Total Total	Comments (Last 20)
V	92-448221	2001 - FORD - GA	VANCOUVER FORD INC (602-924-2001)	FORD	200200	0447	4000	WASHPINGTON	211	211	2001-01-01					** New Line recorded - Only 2000 status Historical
V	92-448221	2001 - FORD - GA	WADSWORTH FORD INC (602-924-2001)	FORD	200200	0447	4000	CONNECTICUT	211	211	2001-01-01					** New Line recorded - Only 2000 status Historical
V	92-448222	2001 - FORD - GA	WATSON QUALITY (702-731-8888)	FORD	200200	0447	4000	MICHIGAN	211	211	2001-01-01					** New Line recorded - Only 2000 status Historical
V	92-448223	2001 - FORD - GA	THE BEACH FORD (513- 452-2000)	FORD	200200	0447	4000	TEXAS	211	211	2001-01-01					** New Line recorded - Only 2000 status Historical

PERC-014 4888

To File	ARM Co Part No	Part Name CNA Part	Dealer Name Add Phone	Year Make Co	Year Color Co	Lead In	Dr Dr	Station	Dr Draw Beam	Dr Dr Beam	DATE (ROW) LINE Quantity	Dr Rate In	Dr Rate Out	Quantity Total	Disposition / Lead In
Y	401-820128	2012 - SP338 - CA	HENRY DAY FORD, INC. (911-5727840)	2012	2012	2012	2012	CA	FLORIDA	2012	2012	2012	2012	2012	** Row 218 exceeded ** Only 2000 slots allowed
Y	413-820128	2012 - SP338 - CA	GATOR FORD TRUCK SALES INC (913-882722)	2012	2012	2012	2012	CA	FLORIDA	2012	2012	2012	2012	2012	** Row 218 exceeded ** Only 2000 slots allowed
Y	400-820128	2012 - SP338 - CA	BEST FORD INC (800-880181)	2012	2012	2012	2012	CA	NEW HAMPSHIRE	2012	2012	2012	2012	2012	** Row 218 exceeded ** Only 2000 slots allowed
Y	400-820128	2012 - SP338 - CA	FLAMBER FORD OF SPRING HILL MO (800-880122)	2012	2012	2012	2012	CA	FLORIDA	2012	2012	2012	2012	2012	** Row 218 exceeded ** Only 2000 slots allowed
Y	400-820128	2012 - SP338 - CA	SPRADLEY METUNE INC (202-8884888)	2012	2012	2012	2012	CA	WYOMING	2012	2012	2012	2012	2012	** Row 218 exceeded ** Only 2000 slots allowed
Y	400-820128	2012 - SP338 - CA	MATTHEWS FORD INC (919-817211)	2012	2012	2012	2012	CA	NORTH CAROLINA	2012	2012	2012	2012	2012	** Row 218 exceeded ** Only 2000 slots allowed
Y	400-820128	2012 - SP338 - CA	JIM BUELS FORD CO	2012	2012	2012	2012	CA	CALIFORNIA	2012	2012	2012	2012	2012	** Row 218 exceeded ** Only 2000 slots allowed

FORD-044 4000

TRF No	Area Code City State	Particular Data Ref No	Dealer Name and Phone	Year Make Co	Model	Chassis	Load No	City State	Dr Power	1971 City Class	Weight Gross < LWB - Gross Weight	Re Sp/cls	R1 Sp/cls	Quantity	Notes
Y	801-822200	2022 - 8738 - DA	LANSING FORD (801-822200)	1967	200000	2000	100	ALABAMA	B11	B11-POWER TRAIN					** New Unit assembled ** Only 2500 status checked
Y	801-822200	2022 - 8738 - DA	CONCRETE FORD J LINCOLN-MERCURY WORLD OF NEWTON (801-822200)	1967	200000	2000	100	NEW JERSEY	B11	B11-POWER TRAIN					** New Unit assembled ** Only 2500 status checked
Y	409-287411	2022 - 8738 - DA	LANSING FORD LINCOLN MERCURY (409-287411)	1967	200000	400	100	TEXAS	B11	B11-POWER TRAIN					** New Unit assembled ** Only 2500 status checked
Y	909-888180	2022 - 8738 - DA	BRANCO FORD L-M (909-888180)	1967	200000	400	100	CALIFORNIA	B11	B11-POWER TRAIN					** New Unit assembled ** Only 2500 status checked
Y	909-888180	2022 - 8738 - DA	LITHIA FORD OF PUEBLO (909-888180)	1967	200000	400	100	CALIFORNIA	B11	B11-POWER TRAIN					** New Unit assembled ** Only 2500 status checked
Y	813-822100	2022 - 8738 - DA	TULSA AUTO GROUP (813-822100)	1967	200000	2000	100	OKLAHOMA	B11	B11-POWER TRAIN					** New Unit assembled ** Only 2500 status checked
Y	409-287411	2022 - 8738 - DA	SMITH MOTORS INC (409-287411)	1967	200000	100	100	WISCONSIN	B11	B11-POWER TRAIN					** New Unit assembled ** Only 2500 status checked
Y	813-822100	2022 - 8738 - DA	ROHARD FORD INC (813-822100)	1967	200000	2000	100	INDIANA	B11	B11-POWER TRAIN					** New Unit assembled ** Only 2500 status checked

FORD-044 4200

Tr. No.	Area Cd *	Full Name Cont. Ref. #	Dealer Name and Address	City/State/Zip	Year	Model	Color	Equip.	MSRP	Actual Price	Year	Make	Model	MSRP	Actual Price	Year	Make	Model	MSRP	Actual Price	Year	Make	Model	MSRP	Actual Price	Year	Make	Model	MSRP	Actual Price	Year	Make	Model	MSRP	Actual Price
Y	261-4488171	2022 - FORD - CA	RANDALL REED FORD OF PEASLEE (261-4488171)	PEASLEE, CA	2022	460	Black	TEXAS	811	811-POWER TRAIN	Y	F	F																						** Row limit exceeded ** Only 2000 entries allowed
Y	734-2212708	2022 - FORD - CA	JACK DEWATER FORD INC. (734-2212708)	PEASLEE, CA	2022	377	Firestorm	MICHIGAN	811	811-POWER TRAIN	Y	F	F																						** Row limit exceeded ** Only 2000 entries allowed
Y	741-081111	2022 - FORD - CA	PALMER MOTOR SALES INC. (741-081111)	PEASLEE, CA	2022	174	Firestorm	MICHIGAN	811	811-POWER TRAIN	Y	F	F																						** Row limit exceeded ** Only 2000 entries allowed
Y	770414304	2022 - FORD - CA	LEGACY FORD MERCURY (770-414304)	PEASLEE, CA	2022	204	Red	GEORGIA	811	811-POWER TRAIN	Y	F	F																						** Row limit exceeded ** Only 2000 entries allowed
Y	840-217108	2022 - FORD - CA	BILL UTTER FORD INC. (840-217108)	PEASLEE, CA	2022	248	Red	TEXAS	811	811-POWER TRAIN	Y	F	F																						** Row limit exceeded ** Only 2000 entries allowed
Y	872-088111	2022 - FORD - CA	SWEETWATER FORD INC. (872-088111)	PEASLEE, CA	2022	188	Galaxy	INDIANA	558	558-POWER TRAIN	Y	F	F																						** Row limit exceeded ** Only 2000 entries allowed
Y	288-348111	2022 - FORD - CA	LITHIA FORD OF MOORE (288-348111)	PEASLEE, CA	2022	187	Black	OHIO	811	811-POWER TRAIN	Y	F	F																						** Row limit exceeded ** Only 2000 entries allowed
Y	288-087348	2022 - FORD - CA	FORT ANGLER FORD-LINCOLN-MERCURY INC. (288-087348)	PEASLEE, CA	2022	148	Black	WASHINGTON	811	811-POWER TRAIN	Y	F	F																						** Row limit exceeded ** Only 2000 entries allowed

PENS-044 4691

Tr. Reg	Area Of Ph. Num	Prod Num Cons No	Dealer Name And Phone	Make Model Cyl	Year Cr. Cyl	Local Dist. Cyl	Region	St. Power Date	ST. 1st Date	Model (make 1-4 Unit - Cons. type	St. 1st Date	St. 1st Date	Cons. type	Cons. type
Y	181-611200	2032 - 4728 - D4	LOAN STAN FORD 245-611200	F1T	2000	2007	INDIAN	INDIAN	011	011-POWER TRAIN	1	R	** New Unit assembled ** Only 2000 status delivered	
Y	712-222000	2032 - 4728 - D4	STANLEY FORD INC 712-022000	F1T	2000	2007	INDIAN	INDIAN	011	011-POWER TRAIN	1	R	** New Unit assembled ** Only 2000 status delivered	
Y	912-212701	2032 - 4728 - D4	JULIP BONES- LINCOLN 912-212701	F1T	2000	2104	INDIAN	GEORGIA	011	011-POWER TRAIN	1	R	** New Unit assembled ** Only 2000 status delivered	
Y	202-222011	2032 - 4728 - D4	LAKE CITY FORD LINCOLN 202-222011	F1T	2000	2007	INDIAN	INDIAN	011	011-POWER TRAIN	1	R	** New Unit assembled ** Only 2000 status delivered	
Y	011-212001	2032 - 4728 - D4	RAILWAY FORD TYLER (011-212001)	F1T	2000	2007	INDIAN	INDIAN	011	011-POWER TRAIN	1	R	** New Unit assembled ** Only 2000 status delivered	
Y	011-212001	2032 - 4728 - D4	WESTERN HILLS AUTO COMPANY (011-212001)	F1T	2000	2104	INDIAN	COLORADO	011	011-POWER TRAIN	1	R	** New Unit assembled ** Only 2000 status delivered	

PERC-014 485Z

TR No	Ann Cl. # (10-107)	File Name Cont Part #	Dealer Name And Phone	Wsp Motor Cyl	Wsp Dis Cyl	Lead Dis	Dr Cl	Trans	St Prov Code	VMT Miles	Year	Make	Model	Class (make) & Limit - Quantity reqd	Reg Status	SA State	County Seat Name	Comments (Lead Cl)
Y	286-22028	2032 - 4930 - CA	HALLEY FORD MAZDA COLUMBIA PROVO (286- 22028)	4 CT	2000IN	2002	486 48	UTAH	811	811-POWER TRAIN								** Row limit exceeded ** Only 2000 status displayed
Y	270-22222	2032 - 4930 - CA	PERCY FORD INC. MERC INC (270- 22222)	4 CT	2000IN	2100	486 48	COLORADO	811	811-POWER TRAIN								** Row limit exceeded ** Only 2000 status displayed
Y	272-22222	2032 - 4930 - CA	RICKHALL FORD- MERCURY (272- 22222)	4 CT	2000IN	2007	486 48	TEXAS	811	811-POWER TRAIN								** Row limit exceeded ** Only 2000 status, displayed
Y	286-24281	2032 - 4930 - CA	BECKWOOD FORD LANOOLN MERCURY OF CULLMAN INC (286- 24281)	4 CT	2000IN	2000	486 48	ALABAMA	811	811-POWER TRAIN								** Row limit exceeded ** Only 2000 status displayed
Y	216-28024	2032 - 4930 - CA	D. R. MILNER FORD SALES INC (216- 28024)	4 CT	2000IN	2100	Transaxle	MICHIGAN	811	811-POWER TRAIN								** Row limit exceeded ** Only 2000 status displayed
Y	262-26172	2032 - 4930 - CA	COURTESY FORD (262- 26172)	4 CT	2000IN	2000	486 48	MISSISSIPPI	811	811-POWER TRAIN								** Row limit exceeded ** Only 2000 status displayed
Y	278-25204	2032 - 4930 - CA	BRIDGEMOOR FORD (278-25204)	4 CT	2000IN	2002	486 48	KENTUCKY	811	811-POWER TRAIN								** Row limit exceeded ** Only 2000 status displayed

Yr	Area Code City	Post Name City State	Dept Name Address	Year	Model	Make	Year	Make	Model	Year	Make	Model	Year	Make	Model	Year	Make	Model
Y	201-234-1111	2012 - WASH - GA	SCOTT FORD (24- 24411)	6 BT	2000	2000	Tennessee	MEMPHIS	311	311-POWER TRAIN		VA	R					** New Unit acquired ** Only 2000 status of interest
Y	510-261-1999	2012 - WASH - GA	MAGNUMS FRESH FORD (21- 21199)	6 BT	2000	2000	California	T327	308	308-ELECTRICAL		VA	R					** New Unit acquired ** Only 2000 status of interest
Y	701-326-1111	2012 - WASH - GA	MARKETPLACE MOTORIS INC (21- 21111)	6 BT	2000	2000	North Dakota	328	328	311-POWER TRAIN		VA	R					** New Unit acquired ** Only 2000 status of interest
Y	610-241-1111	2012 - WASH - Ga	ESTER PARK AUTO MALL, INC (27- 27111)	6 BT	2000	2000	Colorado	241	241	311-POWER TRAIN		VA	R					** New Unit acquired ** Only 2000 status of interest

Year of the Firm	Area Of the Firm	Plant Name Plant Address	Dealer Name and Phone	How Major Co.	How Gen. Co.	Local Pl.	Dist. Co.	Region	St. Power Code	Utility Code	Count (Power) & Unit Capacity	PL Area and PL State	PL State and PL State	Utility Rate Method	Remarks (Local Dist.)
Y	195-241827	2032 - N. 20th - DA	COLE FORD-MERCURY OF WINCHESTER, INC. (781-241827)					Thorough	KENTUCKY	011	011-POWER TRAIN	1 R	R	** Power Unit expanded ** Only 2800 units delivered	
Y	708-118274	2032 - N. 20th - DA	COUNTRY FORD TRUCKS (708-118274)					Waco Div	CALIFORNIA	011	011-POWER TRAIN	1 R	R	** Power Unit expanded ** Only 2800 units delivered	
Y	713-882020	2032 - N. 20th - DA	CENTRAL FORD (713- 882020)					IRVING DIV	TEXAS	011	011-POWER TRAIN	1 R	R	** Power Unit expanded ** Only 2800 units delivered	
Y	502-118274	2032 - N. 20th - DA	BILLHART FORD LINCOLN-MERCURY INC. (781-241827)					IRVING DIV	TEXAS	011	011-POWER TRAIN	4 R	R	** Power Unit expanded ** Only 2800 units delivered	
Y	504-300111	2032 - N. 20th - DA	STEPHENS AUTO CENTER (781-241827)					Thorough	WEST VIRGINIA	011	011-POWER TRAIN	1 R	R	** Power Unit expanded ** Only 2800 units delivered	
Y	784-179557	2032 - N. 20th - DA	LAMB HORNMAN FORD (784-179557)					Wax Mill	NORTH CAROLINA	011	011-POWER TRAIN	1 R	R	** Power Unit expanded ** Only 2800 units delivered	
Y	818-882020	2032 - N. 20th - DA	THOROUGH FORD (818-882020)					Thorough	MISSOURI	011	011-POWER TRAIN	4 R	R	** Power Unit expanded ** Only 2800 units delivered	
Y	312-344274	2032 - N. 20th - DA	ARCHBOLD FORD INC (312-344274)					1st Dist	LOUISIANA	011	011-POWER TRAIN	4 R	R	** Power Unit expanded ** Only 2800 units delivered	
Y	312-344274	2032 - N. 20th - DA	WILLIS FORD INC (312- 344274)					Thorough	DELAWARE	011	011-POWER TRAIN	4 R	R	** Power Unit expanded ** Only 2800 units delivered	
Y	907-241827	2032 - N. 20th - DA	OLIVE MOTOR COMPANY (907- 241827)					1st Dist	NEW YORK	011	011-POWER TRAIN	4 R	R	** Power Unit expanded ** Only 2800 units delivered	

PC93-044 4885

Tr. No.	Area Of In. No.	Part/Item Code Part	Dealer Name Add. Phone	Week/Mo. Co.	Year/Co. Co.	Land. St. Dr. Co. Region	St. Prov. State	WV. No. Date	Multi. (unit) → Unit. → Owner Name	Est. Type Ind.	Est. Date Ind.	Quota. (est.) (est.)	Minimum. 1. Unit. No. 1.
Y	541-848838	1002 - 87588 - 04	SHIBEN MOTOR COMPANY (811-708000)	1 ST	2002M	800 N.W. Hwy	INDIAN	811 811-POWER TRAIN		Y	R	** New Unit accepted ** Only 5000 units discussed	
Y	405-417311	1002 - 87588 - 04	SEAFOOTE FORD SALES & SER. (811-807211)	1 ST	2002M	8000 T. Highway	ONTARIO	811 811-POWER TRAIN		Y	R	** New Unit accepted ** Only 5000 units discussed	
Y	443-241811	1002 - 87588 - 04	PREMIERWAY MOTOR CO INC (811-841240)	1 ST	2002M	807 N.W. Hwy	SOUTH CAROLINA	811 811-POWER TRAIN		Y	R	** New Unit accepted ** Only 5000 units discussed	
Y	811-848838	1002 - 87588 - 04	FIVE STAR FORD (811-408000)	1 ST	2002M	2000 N.W. Hwy	TEXAS	811 811-POWER TRAIN		Y	R	** New Unit accepted ** Only 5000 units discussed	
Y	612-120838	1002 - 87588 - 04	EDY JOHNSON FORD TRUCK CITY (811-412000)	1 ST	2002M	400 N.W. Hwy	TEXAS	811 811-POWER TRAIN		Y	R	** New Unit accepted ** Only 5000 units discussed	
Y	447-273300	1002 - 87588 - 04	GREENHAY FORD INC (417-273300)	1 ST	2002M	400 N.W. Hwy	FLORIDA	811 811-POWER TRAIN		Y	R	** New Unit accepted ** Only 5000 units discussed	
Y	808-273311	1002 - 87588 - 04	HILSONG FORD (808-273311)	1 ST	2002M	600 N.W. Hwy	CALIFORNIA	811 811-POWER TRAIN		Y	R	** New Unit accepted ** Only 5000 units discussed	
Y	808-273311	1002 - 87588 - 04	LITCHFIELD FORD (808-273311)	1 ST	2002M	300 N.W. Hwy	CONNECTICUT	811 811-POWER TRAIN		Y	R	** New Unit accepted ** Only 5000 units discussed	

FORM 914 8989

Tr. File	Area Of In State	Plant Name Group Prod No.	Dealer Name and Address	State	City	Lat. D.	Dir. Co.	Region	Dr. Prod. Desc.	HT	HT Desc.	Appl. (make) & LTR - Equip. No.	HT Equip. No.	HT Equip. No.	Equip. Equip. No.	Remarks / Load Cl.
Y	417-40	1962-64	WICKSTROM FORD INC. 10700 MICHIGAN	MI	ANN ARBOR	42.28	1547	Terracotta	LINCOLN	800	800-ELECTRICAL					** Ford Equip. assembled ** Only 1962-64 models (1962-64)
Y	240-24	1962-64	JORDAN FORD LTD. 1720-2400 7TH	MI	ANN ARBOR	42.28	1547	Terracotta	THUNDERBOLT	811	811-POWER TRAIN					** Ford Equip. assembled ** Only 1962-64 models (1962-64)
Y	417-40	1962-64	FRIENDLY FORD INC. 117-4040 11TH	MI	ANN ARBOR	42.28	1547	Terracotta	THUNDERBOLT	811	811-POWER TRAIN					** Ford Equip. assembled ** Only 1962-64 models (1962-64)
Y	240-24	1962-64	RED BUTTE FORD INC. 101-2400 10TH	MI	ANN ARBOR	42.28	1547	Terracotta	THUNDERBOLT	811	811-POWER TRAIN					** Ford Equip. assembled ** Only 1962-64 models (1962-64)

FD-3-644 4687

Tax ID	Area Cd + Tax Name	Full Name Code Pref	Vehicle Name, Color, Make	Year Make Cd	Year Reg Cd	Class Of	Dr Cd	Station	Dr Flow Date	WKT	Dr Flow	Cost (New) + Duty Paid	Dr Flow Amt	Dr Flow Amt	Owner Info/Label	REMARKS / LABEL CD
Y	00-270000	0012 - 0200 - 01	BILL TALLEY FORD REG (004-282000)	8	07	00000	000	Tennessee	WASHINGTON	011	011-00000 TEAM				**Flow limit exceeded** Duty 0000 status 000000	
Y	00-017000	0012 - 0200 - 01	COURTESY FORD INC REG (004-282000)	8	07	00000	000	Tennessee	WASHINGTON	011	011-00000 TEAM				**Flow limit exceeded** Duty 0000 status 000000	
Y	00-024000	0012 - 0200 - 01	MEL CLAYTON FORD REG (004-282000)	8	07	00000	000	Tennessee	WASHINGTON	011	011-00000 TEAM				**Flow limit exceeded** Duty 0000 status 000000	
Y	00-024000	0012 - 0200 - 01	ED WITTMER FORD LIMITED WARRANTY REG (004-282000)	8	07	00000	000	Tennessee	WASHINGTON	011	011-00000 TEAM				**Flow limit exceeded** Duty 0000 status 000000	

PER3-044 4800

Yr	Area Code PA Make	Part Num Desc Part C. Y.	Dealer Name And Phone	Qty Model Cn	Stock Qty Cn	Lead Cn	Dr Cn	Region	Alt Part Desc	VOL Yr Cn	Lead (over) < Lead - Cntry over	Mo Qty Inv	Pr Qty Inv	Chgty Inv MON	Inventory	Lead Dn
Y	252-282840	2522 - 2522 - DA	RICHARDS COMPANY SALES (252-282840)	1 BT	200001	2000	2522	NEW MEXICO	NEW MEXICO	511	511-POWER TRAIN	1 R	2	** New 2522 associated ** Only 2522 allow Inventory		
Y	252-282840	2522 - 2522 - DA	FORT MILL FORD INC (252-282840)	1 BT	200001	2000	2522	SOUTH CAROLINA	SOUTH CAROLINA	511	511-POWER TRAIN	1 R	2	** New 2522 associated ** Only 2522 allow Inventory		
Y	252-282841	2522 - 2522 - DA	WOODY ANDERSON FORD (252-282841)	1 BT	200001	2000	2522	ALABAMA	ALABAMA	511	511-POWER TRAIN	1 R	2	** New 2522 associated ** Only 2522 allow Inventory		
Y	403-326333	2522 - 2522 - DA	COLLEGE ROAD LINCOLN LTD (403-326333)	1 BT	200001	2000	2522	ALBERTA	ALBERTA	511	511-POWER TRAIN	1 R	2	** New 2522 associated ** Only 2522 allow Inventory		
Y	252-282841	2522 - 2522 - DA	ALEXANDER FORD INC (252-282841)	1 BT	200001	2000	2522	ALABAMA	ALABAMA	511	511-POWER TRAIN	1 R	2	** New 2522 associated ** Only 2522 allow Inventory		
Y	817-282841	2522 - 2522 - DA	ROBERTS FORD SALES INC (817-282841)	1 BT	200001	2000	2522	TEXAS	TEXAS	511	511-POWER TRAIN	1 R	2	** New 2522 associated ** Only 2522 allow Inventory		
Y	252-282841	2522 - 2522 - DA	MARTA FORD-ABRAHAM (252-282841)	1 BT	200001	2000	2522	FLORIDA	FLORIDA	511	511-POWER TRAIN	1 R	2	** New 2522 associated ** Only 2522 allow Inventory		
Y	252-282841	2522 - 2522 - DA	NORTH POINT FORD (252-282841)	1 BT	200001	2000	2522	ALABAMA	ALABAMA	511	511-POWER TRAIN	1 R	2	** New 2522 associated ** Only 2522 allow Inventory		

TA File #	Acct ID # PK (1-6)	Post Name Class Pkg + ?	Contrib Name And Phone	How Many Ch	How Many Cr	Lead Cl	Dr Cr	Receipt	Dr Post Desc	VNT Vol Desc	Cont (1998) < LHM > Quantity	Dr Rate Pct	Dr Rate Vol	Cont Vol Total	Comments (Cont Cr)
Y	812-282824	8212 - 8212 - DA	CEYUNDA FORD (812-282824)			F	BT	282824	812 North Dr	CALIFORNIA	811	811-POWER TRAIN			** Row 811 exceeded ** Only 2828 dollars allowed
Y	812-282825	8212 - 8212 - DA	FREDRICK FORD TRUCK SALES INC. (812-282825)			F	BT	282825	812 Hill Lake	NORTH CAROLINA	811	811-POWER TRAIN			** Row 811 exceeded ** Only 2828 dollars allowed
Y	812-282827	8212 - 8212 - DA	NAZZARI FORD (812-282827)			F	BT	282827	7120 North Dr	CALIFORNIA	811	811-POWER TRAIN			** Row 811 exceeded ** Only 2828 dollars allowed
Y	812-282828	8212 - 8212 - DA	BUD ANGEL FORD INC (812-282828)			F	BT	282828	8120 Thompson	MICHIGAN	811	811-POWER TRAIN			** Row 811 exceeded ** Only 2828 dollars allowed
Y	811-282829	8212 - 8212 - DA	ADDER FORD LTD. (811-282829)			F	BT	282829	812 Hill Lake	TEXAS	811	811-POWER TRAIN			** Row 811 exceeded ** Only 2828 dollars allowed
Y	811-282830	8212 - 8212 - DA	BLANES FORD- KANSAS/MICHIGAN (811-282830)			F	BT	282830	812 Hill Lake	FLORIDA	811	811-POWER TRAIN			** Row 811 exceeded ** Only 2828 dollars allowed
Y	811-282831	8212 - 8212 - DA	ANDERSON FORD- MICHIGAN (811-282831)			F	BT	282831	7120 Hill and	TEXAS	811	811-POWER TRAIN			** Row 811 exceeded ** Only 2828 dollars allowed
Y	812-282832	8212 - 8212 - DA	JOE COOPER FORD INC. (812-282832)			F	BT	282832	812 Hill Lake	ILLINOIS	811	811-POWER TRAIN			** Row 811 exceeded ** Only 2828 dollars allowed
Y	812-271429	8212 - 8212 - DA	CHARLES THOMAS FORD INC (812-271429)			F	BT	282829	812 Hill Lake	TEXAS	811	811-POWER TRAIN			** Row 811 exceeded ** Only 2828 dollars allowed

PLA Plan	Ann Cd - PL Name	Parties Caus Prod	Dealer Name And Phone	High Motor Cyl	High Sls Cyl	Low Cyl	Gr Cyl	System	St Pow Desc	VMT	Vol Desc	Amount (1994) - LIME - Sugr. rate	PL Rate Int	PL Rate Int	Charge Int Intst	maximum % Load Ct Y
Y	100-552811	1002 - 8732 - DA	DE PRATL FORD SALES (702-812-1111)						MONTANA	811	811-POWER TRAIN					** Row 8112 approved ** Only 2000 status displayed
Y	100-552828	1002 - 8732 - DA	HOLLIS TUTTLE FORD (702-812-1111)						MONTANA	811	811-POWER TRAIN					** Row 8112 approved ** Only 2000 status displayed
Y	100-552827	1002 - 8732 - DA	CASA FORD INC (702-722-2222)						TEXAS	811	811-POWER TRAIN					** Row 8112 approved ** Only 2000 status displayed
Y	100-552829	1002 - 8732 - DA	FULLER FORD INC (702-392-8888)						OHIO	811	811-POWER TRAIN					** Row 8112 approved ** Only 2000 status displayed
Y	100-552830	1002 - 8732 - DA	TEAM FORD (702-392-1000)						NEVADA	811	811-POWER TRAIN					** Row 8112 approved ** Only 2000 status displayed
Y	100-552831	1002 - 8732 - DA	BOZANG FORD CO (804-421-1001)						FLORIDA	811	811-POWER TRAIN					** Row 8112 approved ** Only 2000 status displayed

Area Cd	Part Name	Part Name	Part Name	Part Name	Part Name	Part Name	Part Name	Part Name	Part Name	Part Name	Part Name	Part Name	Part Name	Part Name	Part Name	Part Name	Part Name	Part Name	Part Name	Part Name	Part Name	Part Name	
Y	100-100000	1000-1000-DA	HOMER BRILTON FORD W.C. (MS- 100000)	1000	1000	1000	1000	1000	1000	1000	1000	1000	1000	1000	1000	1000	1000	1000	1000	1000	1000	1000	** Row 101 extended ** Only 1000 claim delivered
Y	100-100000	1000-1000-DA	LILLSTON FORD W.C. (MS-100000)	1000	1000	1000	1000	1000	1000	1000	1000	1000	1000	1000	1000	1000	1000	1000	1000	1000	1000	1000	** Row 102 extended ** Only 1000 claim delivered
Y	100-100000	1000-1000-DA	WAGONA FORD MERCURY INC. (MS- 100000)	1000	1000	1000	1000	1000	1000	1000	1000	1000	1000	1000	1000	1000	1000	1000	1000	1000	1000	1000	** Row 103 extended ** Only 1000 claim delivered
Y	100-100000	1000-1000-DA	GALVIN FORD (MS- 100000)	1000	1000	1000	1000	1000	1000	1000	1000	1000	1000	1000	1000	1000	1000	1000	1000	1000	1000	1000	** Row 104 extended ** Only 1000 claim delivered
Y	100-100000	1000-1000-DA	FUTURE FORD (MS- 100000)	1000	1000	1000	1000	1000	1000	1000	1000	1000	1000	1000	1000	1000	1000	1000	1000	1000	1000	1000	** Row 105 extended ** Only 1000 claim delivered

PERC-944 4762

File #	Area Of Pr Name	Post Name Class Post #	Dealer Name And Phone	How Used	How Gro Col	Lead Dr	Dr Col	Region	R Prev Date	VRT Dr Date	Count (Reg) + LMI - Query name	Pr Rate Int	Pr Rate Int	Count Post Int	maximum / Lead Dr
V	201-281417	2022 - 2022 - DA	LEE BAPP FORD- MERCURY (402- 344287)	E ST	2022M	7182	Nebraska	NEBRASKA	8/11	8/11-POWER TEAM					** Floor level suspended ** Only 2800 status displayed
V	201-281417	2022 - 2022 - DA	BAUGHN BROTHERS FORD (402-382-1171)	E ST	2022M	2144	NEBRASKA	COLORADO	8/11	8/11-POWER TEAM					** Floor level suspended ** Only 2800 status displayed
V	201-281417	2022 - 2022 - DA	YONKALL FORD INC. (402-381-8888)	E ST	2022M	804	NEBRASKA	TEXAS	8/11	8/11-POWER TEAM					** Floor level suspended ** Only 2800 status displayed
V	718-528881	2022 - 2022 - DA	PHIL LONG FORD LLC (718-528881)	E ST	2022M	2144	NEBRASKA	COLORADO	8/11	8/11-POWER TEAM					** Floor level suspended ** Only 2800 status displayed
V	718-528881	2022 - 2022 - DA	PHIL LONG FORD LLC (718-528881)	E ST	2022M	2144	NEBRASKA	COLORADO	8/11	8/11-POWER TEAM					** Floor level suspended ** Only 2800 status displayed
V	201-772721	2022 - 2022 - DA	CRATER LAKE MOTORS INC (201-772721)	E ST	2022M	7182	NEBRASKA	OREGON	8/11	8/11-POWER TEAM					** Floor level suspended ** Only 2800 status displayed

PER3-244 4763

File #	File Name	File Type	File Date	File Time	File Size	File Path	File Owner	File Group	File Permissions	File Attributes	File Content	File Status	File Action	File Result	File Error	File Message
Y	07-057228	PCSE - 0709 - GA	07/05/98	07:28	1024	\\SMB\PCSE\0709	ADMIN	ADMIN	0709	GA	COLO	011	011-POWER TRAIN			** Row limit exceeded ** Only 2500 items allowed
Y	07-057408	PCSE - 0709 - GA	07/05/98	07:38	1024	\\SMB\PCSE\0709	ADMIN	ADMIN	0709	GA	MISSISSIPPI	011	011-POWER TRAIN			** Row limit exceeded ** Only 2500 items allowed
Y	07-057411	PCSE - 0709 - GA	07/05/98	07:38	1024	\\SMB\PCSE\0709	ADMIN	ADMIN	0709	GA	BRTN COLL	011	011-POWER TRAIN			** Row limit exceeded ** Only 2500 items allowed
Y	07-057409	PCSE - 0709 - GA	07/05/98	07:38	1024	\\SMB\PCSE\0709	ADMIN	ADMIN	0709	GA	ALABAMA	011	011-POWER TRAIN			** Row limit exceeded ** Only 2500 items allowed
Y	07-057401	PCSE - 0709 - GA	07/05/98	07:38	1024	\\SMB\PCSE\0709	ADMIN	ADMIN	0709	GA	OREGON	011	011-POWER TRAIN			** Row limit exceeded ** Only 2500 items allowed
Y	07-057417	PCSE - 0709 - GA	07/05/98	07:38	1024	\\SMB\PCSE\0709	ADMIN	ADMIN	0709	GA	TEXAS	011	011-POWER TRAIN			** Row limit exceeded ** Only 2500 items allowed
Y	07-057427	PCSE - 0709 - GA	07/05/98	07:38	1024	\\SMB\PCSE\0709	ADMIN	ADMIN	0709	GA	CA	011	011-POWER TRAIN			** Row limit exceeded ** Only 2500 items allowed

Ty. Plant	Assn. Cd. - Pr. Num.	Part Man. Case Prt Pr. Num.	Dealer Name And Phone	Year Make Cd.	Model Reg. Cd.	Lead Dr.	Dr. Cd.	Region	St. Plant Code	VEHICLE Desc.	Power (Horse) < Low- Gear Desc.	Alt. Rate Int.	Alt. Rate Int.	Comments (With Labels)	Restrictions / Labels Dr. 1
Y	00-01586	0000 - 0000 - 00	AUTOFARM FORD INC. (903-282-2540)	F	0000	000	0000	NEW HAMPSHIRE	011	011-POWER TEAM				** New Unit associated ** Only 2000 status approved	
Y	01-07114	0000 - 0000 - 00	POWER FORD TRUCKS INC. (913-771-0811)	F	0000	000	0000	MINNESOTA	011	011-POWER TEAM				** New Unit associated ** Only 2000 status approved	
Y	00-06180	0000 - 0000 - 00	PULLMAN MOTOR CO (703-264-1001)	F	0000	000	0000	SOUTH CAROLINA	011	011-POWER TEAM				** New Unit associated ** Only 2000 status approved	
Y	00-02111	0000 - 0000 - 00	FRIENDLY FORD INC. (703-264-1001)	F	0000	000	0000	ILLINOIS	011	011-POWER TEAM				** New Unit associated ** Only 2000 status approved	

Trailer	Area Cd PL Num	Part Name Code Prod # - -	Vendor Name And Phone	Unit Meter Cd	Wtd Bin Cd	Load Dt	Dr Cd	Product	St Prov Date	MRT	Vol Date	GLTR (2040) < LSW - Quantity	RE Date Inv	RE Date Inv	Quantity Unit	Remarks / Load Dt
Y	102-202224	2032 - FORD - DA	ROCKWALL FORD- MERCURY 1972- 218212			1972		203224 2032 100 100	TEXAS	811	811-POWER TRAIN					** New Unit assembled ** Only 2000 chairs delivered
Y	112-218212	2032 - FORD - DA	BILL CURRIS FORD INC 178-218212			1972		203224 4036 100 100	FLORIDA	811	811-POWER TRAIN					** New Unit assembled ** Only 2000 chairs delivered
Y	102-202224	2032 - FORD - DA	PITTSBURG FORD INC 100-202224			1972		203224 2170 100 100	TEXAS	811	811-POWER TRAIN					** New Unit assembled ** Only 2000 chairs delivered
Y	102-202224	2032 - FORD - DA	JOHN ELWAY FORD INC 100-202224 PITTSBURG FORD INC 100-202224			1972		203224 2221 100 100	COLORADO	811	811-POWER TRAIN					** New Unit assembled ** Only 2000 chairs delivered
Y	102-202224	2032 - FORD - DA	JOHN ELWAY FORD INC 100-202224 PITTSBURG FORD INC 100-202224			1972		203224 2100 100 100	COLORADO	811	811-POWER TRAIN					** New Unit assembled ** Only 2000 chairs delivered
Y	112-218212	2032 - FORD - DA	NICHOLS FORD 107- 218212			1972		203224 2411 100 100	TEXAS	811	811-POWER TRAIN					** New Unit assembled ** Only 2000 chairs delivered
Y	102-202224	2032 - FORD - DA	LOUIS LEAS FORD 102-202224			1972		203224 220 100 100	ALABAMA	811	811-POWER TRAIN					** New Unit assembled ** Only 2000 chairs delivered
Y	102-202224	2032 - FORD - DA	CARSBY FORD INC 102-202224			1972		203224 2032 100 100	NORTH CAROLINA	811	811-POWER TRAIN					** New Unit assembled ** Only 2000 chairs delivered

PLS-044 4788

PL Plant	Area Code	Plant Name	Generator Name	Unit No.	Unit Type	Capacity (MW)	Capacity (MW)	Capacity (MW)	Capacity (MW)	Capacity (MW)	Capacity (MW)	Capacity (MW)	Capacity (MW)	Capacity (MW)	Capacity (MW)	Capacity (MW)	Capacity (MW)	Capacity (MW)	
Y	018-020000	0200 - MISS - GA	PUNTON FORD MERCURY INC. (018- 020000)	01	GT	200000	200	200	200	200	200	200	200	200	200	200	200	200	** Flow limit exceeded ** Only 200000 allowed
Y	019-020000	0200 - MISS - GA	BRACKENRIDGE MOTOR CO (019-020000)	01	GT	200000	200	200	200	200	200	200	200	200	200	200	200	200	** Flow limit exceeded ** Only 200000 allowed
Y	024-020000	0200 - MISS - GA	WEST TEXAS FORD INC. (024-020000)	01	GT	200000	200	200	200	200	200	200	200	200	200	200	200	200	** Flow limit exceeded ** Only 200000 allowed
Y	005-040000	0200 - MISS - GA	COOK-HAYTHEHEAD FORD ENGINEERING	01	GT	200000	200	200	200	200	200	200	200	200	200	200	200	200	** Flow limit exceeded ** Only 200000 allowed
Y	000-020000	0200 - MISS - GA	ROCKWELL FORD MERCURY INC. (000- 020000)	01	GT	200000	200	200	200	200	200	200	200	200	200	200	200	200	** Flow limit exceeded ** Only 200000 allowed
Y	001-020000	0200 - MISS - GA	ROCKWELL FORD AT HAYTHEHEAD (001- 020000)	01	GT	200000	200	200	200	200	200	200	200	200	200	200	200	200	** Flow limit exceeded ** Only 200000 allowed
Y	002-020000	0200 - MISS - GA	MONTICELLO FORD MERCURY INC. (002- 020000)	01	GT	200000	200	200	200	200	200	200	200	200	200	200	200	200	** Flow limit exceeded ** Only 200000 allowed

PERS-004 5787

-----Original Message-----

From: Howe, Brian (B.T.)
Sent: Monday, July 08, 2002 12:26 PM
To: Hale, Curt (B.C.); Smith, Ryan (R.E.)
Subject: Adjustable pedal throttle failures on 2002 7.3 trucks

Curt, Ryan, I just wrote a couple of CQIS reports on the above issue, 2GHJZ001, 2GHJZ002 that I hope you read. I visited a dealer who has replaced 5 of these in the last month or so. I see we are selling hundreds of them, 729 last month. When this pedal fails, you step on the throttle, and nothing happens, then the drivers go up and down on the throttle and all of the sudden it works, and then you take off abruptly. This is a potential safety issue with either no response or high throttle response. Are you aware of the concern and doing anything? If not please read the reports and look into it. I looked up the 5 units they had replaced lately, and they are all built in 12/01, or 01/02.

Brian Howe
Field Quality Engineer
Enhanced Concern Identification
Ford Customer Service Division
702 205-3634 bhowe2@ford.com

From: Abar, Robert (R.B.)
Sent: Friday, June 20, 2003 10:19 AM
To: Wolfe, Brian (B.C.); Aulier, Jim (J.E.); Figurski, Patrick (P.M.)
Cc: Abar, Robert (R.B.); Lipsky, Lawrence (L.J.); West, Gregory (G.S.)
Subject: FW: Plots for Teleflex Presentation

Importance: High

Brian / Jim / Pat,

Attached file contains tables and plots for presentation and as background.

Please review the plot recommendations in the note and Draft of the supplier responsibility at the bottom of the note.

Please provide Greg West with your recommendations for what you want included in the presentation document

Robert B. Abar

Manager, Powertrain

(313) 84-64247 FAX:(313) 24-89073 rabar@ford.com
Room: 1CP20/Rotunda Ct #4 Mail Drop: LM410

-----Original Message-----

From: Abar, Robert (R.B.)
Sent: Friday, June 20, 2003 8:54 AM
To: West, Gregory (G.S.)
Cc: Abar, Robert (R.B.); Case, Joseph (J.E.); Lipsky, Lawrence (L.J.)
Subject: Plots for Teleflex Presentation
Importance: High



QB 9F836 Teleflex
Charts 6-19-...

Greg,

File above contains analysis that Joe Case performed and summarized.

Joe started with 8424 total claims and eliminated 499 as redundant claims (same date, same \$, minor description change in some field) leaving him with 7925 total claims, which is what the analysis and the summary charts are based on

Overall his cost file totalled \$1,467,436 for the 7925 claims remaining (which differs by roughly \$20K from your presentation material.

Joe is off today, but will be back on Monday to provide you with any chart revisions for the 6/26 meeting with Teleflex. Joe will also be working on the cost associated with the breakdowns provided in this package on Monday.

For the presentation package I suggest using the following slides:

Total Claim Chart - Breaks out single (7205) vs multiple repairs (720)

Single Claim Chart - Breaks down the single repairs into electrical (72), other (749), & pedal (6384)

Repeat Claim Chart - Breaks down the repeat claims into original or repeat claim plus electrical, other, &

pedal

Repeat Repairs vs Delta TIS - Shows electrical not identified beyond 5 months in service

Background info

Repeat Claim Table - Provides matrix of the delta time-in-service (TIS) & delta mileage since previous repair so team can determine how many repeat repairs could be binned as electrical repeats even though not listed as such. I would suggest doing it on mileage as prime with time-in-service secondary. I would think 4000 or 6000 miles should show up a repeat electrical issue. Chart would indicate 88 for 4000 and 152 for 6000. These number would need to be doubled to include the original repair which would also be assumed to be an electrical issue to 176 for 4000 miles & 304 for 6000 miles respectively. (NOTE: this doubling to capture original failure overcounts a few original repairs if the deltas are from 3rd, 4th, 5th events, but probably not enough of them to worry about)

Initial Claim Table - Provide matrix of TIS & delta mileage for reference

Other - Provides a rough breakdown of the claims that were not binned as pedal or electrical from description provided

Repeat Cost vs Delta TIS - Cost reference for the Repairs plot.

Data Table - Matrix of the values used in the charts

Electrical Issue Total

72 single claim - electrical verbatim

+

11 repeat claims - electrical verbatim

+

304 repeats in 6000 miles or less (or change to other criteria)

+

8 single other - ratioed by the % (1.1) of electrical (72) to pedal+electrical (6384+72=6456) [749x.011=8]

+

2 repeat other - ratioed by the % (1.8) of electrical (11) to pedal+electrical (312+289+7+4=612) [70+38=108x.018=2]

=

397 total electrical (which represents about 5% of the total expended warranty (or roughly \$75K) of the \$1.467M.

+

220 additional consideration for infant mortality (6000 miles) that may or may not be associated with pedal issues (which adds roughly 3%)

=

617 total non-supplier (roughly \$115K) of the \$1.467M

If different criteria are picked the number of repairs can be pulled from the tables.

Robert B. Abar

Manager, Powertrain

(313) 84-54247

FAX:(313) 24-89073

rabar@ford.com

PE23-644 5876

Room: 1CP20/Rafunda C1 #4

Mail Drop: LM410

PE83-844 9877

QM RANGE	Cells 108																		Grand Total	CUM				
	1	2	3	4	5	6	7	8	9	10	11	12	13	14	15	16	17	18						
0	1									1			3											5
2000	4									1			3											40
4000										2			2											68
6000										1			3											162
8000										2			4											202
10000										2			6											252
12000										2			8											305
14000										1			8											340
16000										1			8											371
18000										1			8											385
20000										1			9											395
22000										1			9											406
24000										1			9											409
26000										1			1											414
28000										1			1											417
30000										1			1											418
32000										1			1											420
34000										1			1											424
36000										1			1											425
38000										1			1											428
40000										1			1											427
42000										1			1											429
Grand Tot	1	3	8	10	14	14	13	21	20	41	40	29	47	48	27	15	16	9	2					428
CUM	1	5	12	22	36	50	63	100	140	182	221	281	328	366	385	410	420	429	429					

PERC-044 3878



NAME	TIE WYS																			Grand Total	CLM		
	1	2	3	4	5	6	7	8	9	10	11	12	13	14	15	16	17	18	19				
10000	1																			1	148	148	
10001		1																			1	277	277
10002			1																		1	230	230
10003				1																	1	465	465
10004					1																1	886	886
10005						1															1	2307	2307
10006							1														1	3273	3273
10007								1													1	4002	4002
10008									1												1	4690	4690
10009										1											1	117	117
10010											1										1	2268	2268
10011												1									1	467	467
10012													1								1	8121	8121
10013														1							1	305	305
10014															1						1	8873	8873
10015																1					1	8871	8871
10016																	1				1	7060	7060
10017																		1			1	7387	7387
10018																			1		1	7312	7312
10019																				1	1	30	30
10020																				1	1	7385	7385
10021																				1	1	7416	7416
10022																				1	1	7443	7443
10023																				1	1	7486	7486
10024																				1	1	7486	7486
10025																				1	1	7803	7803
10026																				1	1	7812	7812
10027																				1	1	7881	7881
10028																				1	1	7358	7358
10029																				1	1	7303	7303
10030																				1	1	7840	7840
10031																				1	1	7642	7642
10032																				1	1	7543	7543
10033																				1	1	7596	7596
10034																				1	1	7547	7547
10035																				1	1	7545	7545
10036																				1	1	7849	7849
10037																				1	1	7803	7803
10038																				1	1	7563	7563
10039																				1	1	7886	7886
10040																				1	1	7358	7358
10041																				1	1	7300	7300
10042																				1	1	7301	7301
10043																				1	1	7882	7882
Grand Tot	4	64	71	138	228	443	717	1117	1664	2482	3717	5337	7450	10398	14911	21067	29528	41387	57117	78422	106822	106822	
CLM	4	64	71	138	228	443	717	1117	1664	2482	3717	5337	7450	10398	14911	21067	29528	41387	57117	78422	106822	106822	

PE03-04 9879



2032 PER38 Claims	7205
7.31 2032 PER38 single-claim VINs	7205
Repeat Claims	720

REBIN

Single-Claim VINs	7205
Electrical	72
Other	748
Pedal	6384

72	72
169	1328
6984	5804

Multi-Claim VINs	720
Electrical - Original Claims	7
Electrical - Repeat Claims	4
Other - Original Claims	70
Other - Repeat Claims	63
Pedal - Original Claims	289
Pedal - Repeat Claims	287

7
4
70
39
289
312

BRN	Keywords	0 Repeat	Grand Total	
Other	(No Tech Contn)	177	12	189
	Accelerator Pedal	177	12	189
	Charm < 40	173	5	178
	Cryptic "NOP"	41	1	42
	ENG PERF	148	8	154
	IVS/Switch	129	4	133
	P0221_P0122 or (blank)	277	9	286
		275	19	294
Other Total		1393	87	1482

Move to Pedal

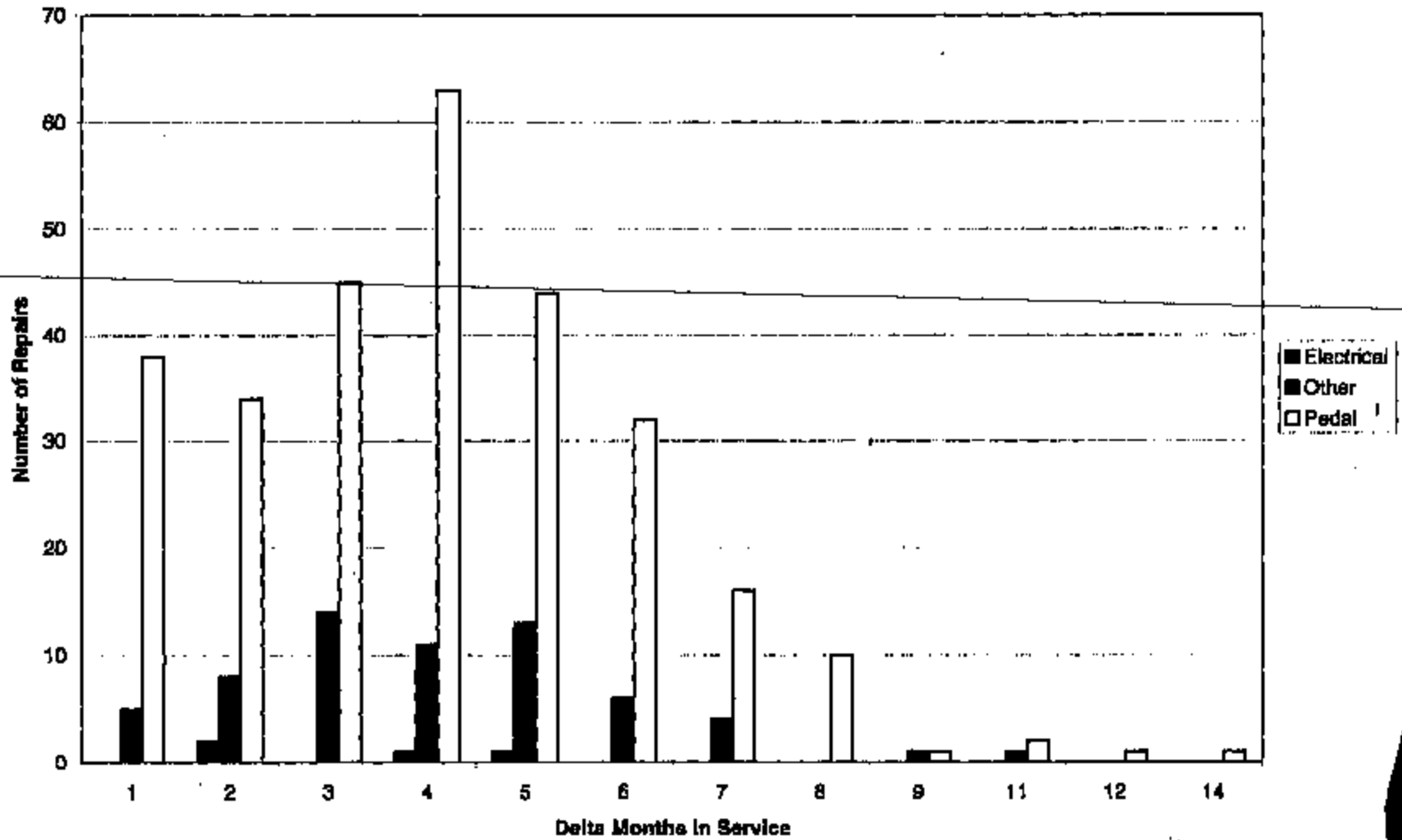
Move to Pedal

Move to Pedal

(No Tech	177	12	189
Charm < 40	173	5	178
Cryptic "N	41	1	42
ENG PERF	148	8	154
(blank)	276	19	294
			857

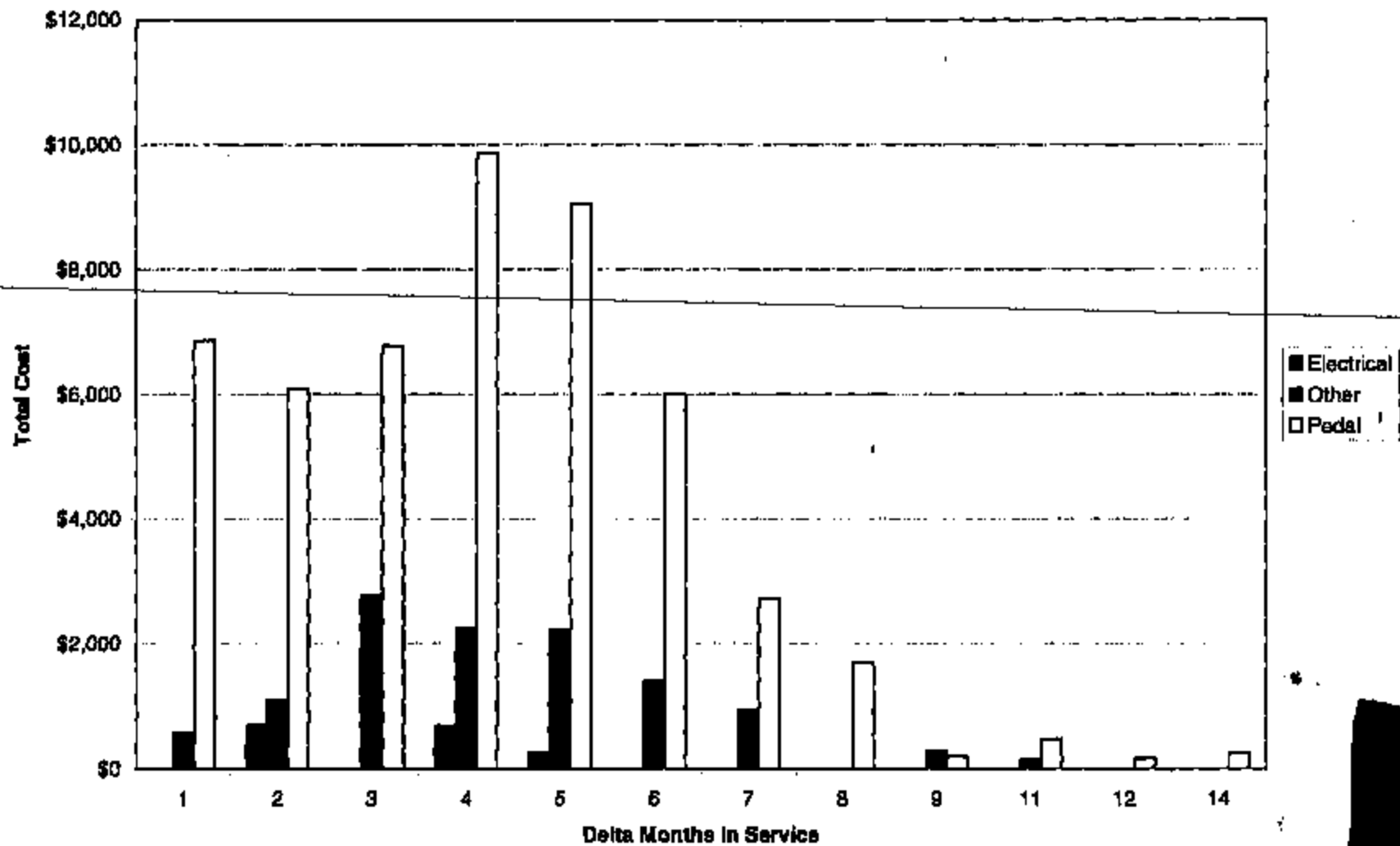
BRN	Costs	FALSE	TRUE	Grand Total
Electrical	Count of VIN	79	4	83
	Sum of Total Cost	18096.71	1644.6	20741.31
Other	Count of VIN	1393	63	1452
	Sum of Total Cost	272809.07	11726.26	284535.33
Pedal	Count of VIN	6083	287	6370
	Sum of Total Cost	1111877.42	50219.86	1162097.28
Total Count of VIN		7671	354	8025
Total Sum of Total Cost		1403647.2	62680.72	1466327.92

2C3Z 9F836 - Distribution of Times to "Repeat Repair"



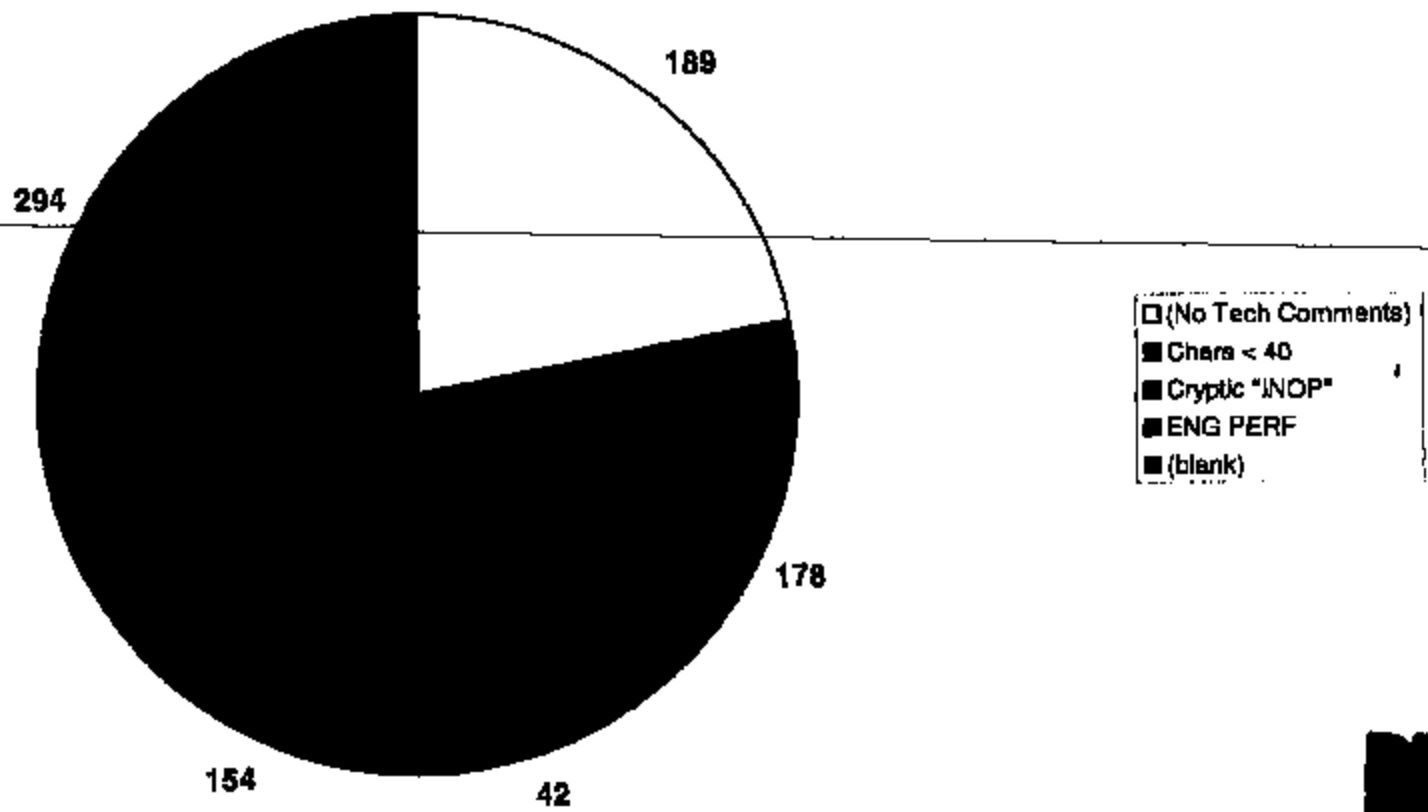
PE83-044 5881

2C3Z 9F836 - Distribution of Times to "Repeat Repair"

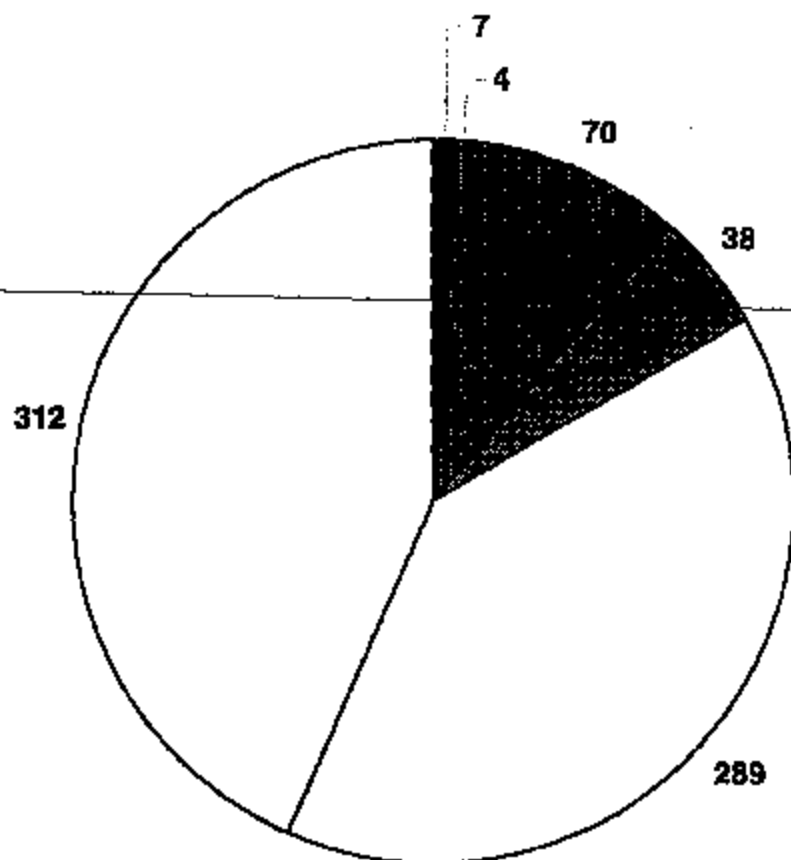


PER3-644 5882

Breakdown of All "Other" (857) Verbatims by Category



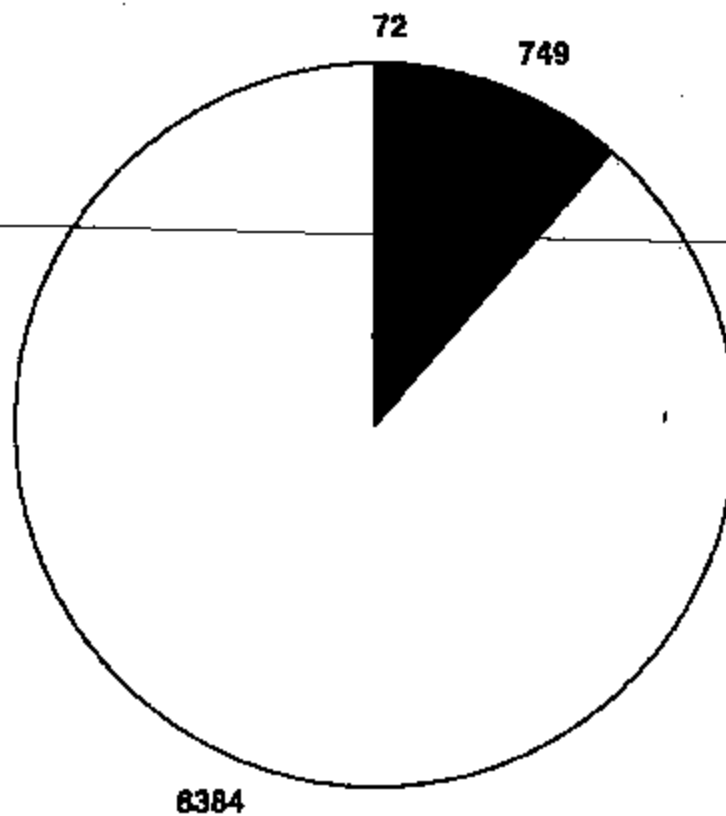
**2002 and 2003 MY 2C3Z 9F836 Claims Repeat Analysis
Multiple-Claim VINs by Cause**



- Electrical - Original Claims
- Electrical - Repeat Claims
- Other - Original Claims
- Other - Repeat Claims
- Pedal - Original Claims
- Pedal - Repeat Claims



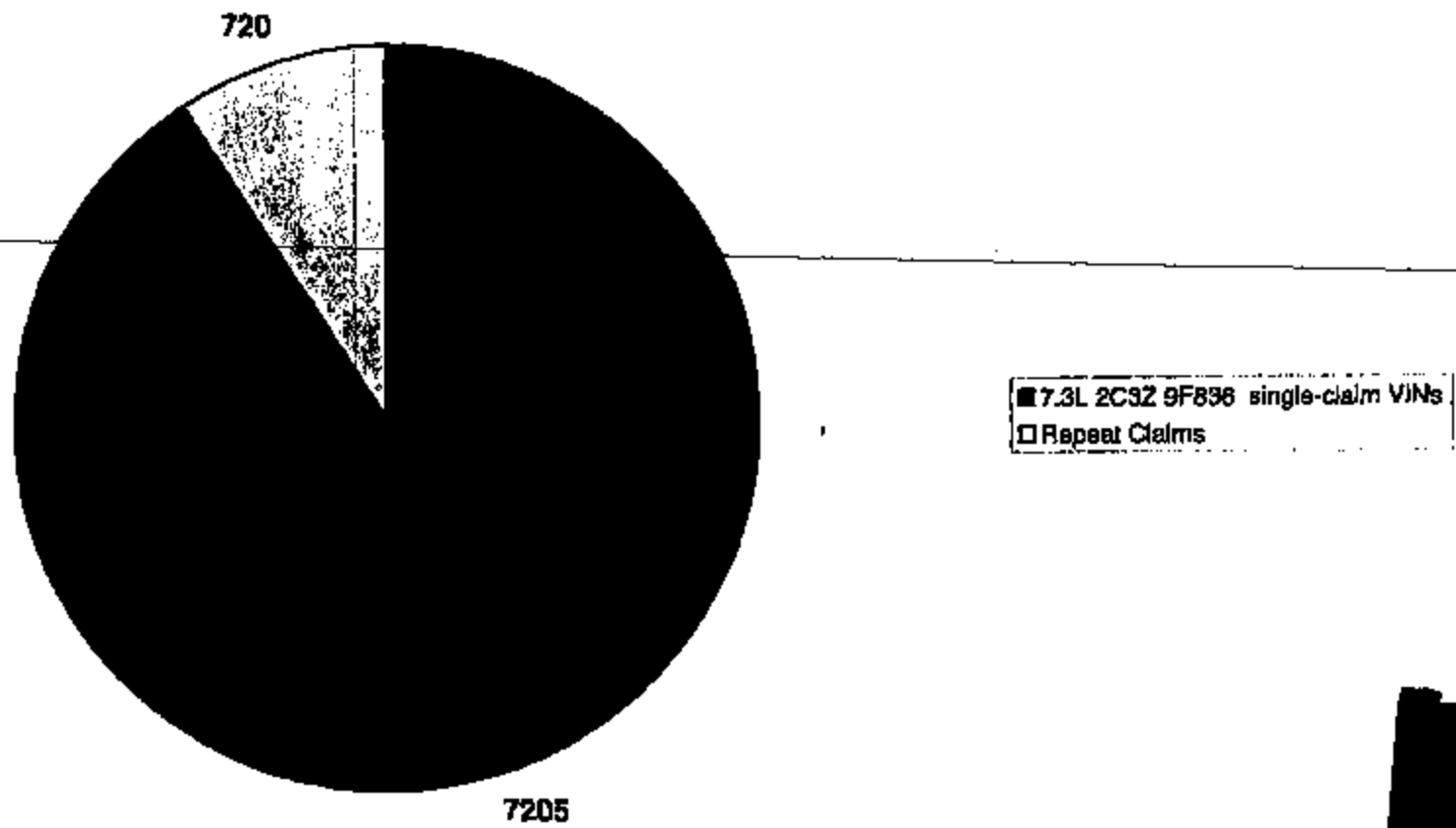
**2002 and 2003 MY 2C3Z 9F836 Claims Repeat Analysis
Single-Claim VINs by Cause**



■ Electrical
■ Other
□ Pedal



2002 and 2003 MY 2C3Z 9F836 Claims Repeat Analysis



PE03-044 5886



From: Abar, Robert (R.B.)
Sent: Friday, June 20, 2003 8:54 AM
To: West, Gregory (G.S.)
Cc: Abar, Robert (R.B.); Casa, Joseph (J.E.); Liposky, Lawrence (L.J.)
Subject: Plots for Teleflex Presentation

Importance: High



QB 9F836 Teleflex
Charts 6-19-...

Greg,
File above contains analysis that Joe Case performed and summarized.

Joe started with 8424 total claims and eliminated 499 as redundant claims (same date, same \$, minor description change in some field) leaving him with 7925 total claims, which is what the analysis and the summary charts are based on

Overall his cost file totalled \$1,467,436 for the 7925 claims remaining (which differs by roughly \$20K from your presentation material.

Joe is off today, but will be back on Monday to provide you with any chart revisions for the 6/26 meeting with Teleflex. Joe will also be working on the cost associated with the breakdowns provided in this package on Monday.

For the presentation package I suggest using the following slides:

- Total Claim Chart - Breaks out single (7205) vs multiple repairs (720)
- Single Claim Chart - Breaks down the single repairs into electrical (72), other (749), & pedal (6384)
- Repeat Claim Chart - Breaks down the repeat claims into original or repeat claim plus electrical, other, & pedal
- Repeat Repairs vs Delta TIS - Shows electrical not identified beyond 5 months in service

Background info

Repeat Claim Table - Provides matrix of the delta time-in-service (TIS) & delta mileage since previous repair so team can determine how many repeat repairs could be binned as electrical repeats even though not listed as such. I would suggest doing it on mileage as prime with time-in-service secondary. I would think 4000 or 6000 miles should show up a repeat electrical issue. Chart would indicate 88 for 4000 and 152 for 6000. These number would need to be doubled to include the original repair which would also be assumed to be an electrical issue to 176 for 4000 miles & 304 for 6000 miles respectively. (NOTE: this doubling to capture original failure overcounts a few original repairs if the deltas are from 3rd, 4th, 5th events, but probably not enough of them to worry about)

Initial Claim Table - Provide matrix of TIS & delta mileage for reference

Other - Provides a rough breakdown of the claims that were not binned as pedal or electrical from description provided

Repeat Cost vs Delta TIS - Cost reference for the Repairs plot.

DM BAND	-1	1	2	3	4	5	6	7	8	9	10	11	12	13	14	15	16	17	18	Closed Total
0		1								1										1
2000		4	4	5	2	3	5	2		4	3	2	2				1	1		18
4000				1	4	4	4	3	3	2	5	3	2	2	2	1	1			33
6000			2	3	1	4	3	3	3	3	10	5	3	3	4	3	3	1	1	64
8000			1	5	2	2	1	4	3	3	3	3	7	3	2	2	1		1	55
10000					2	2	2	5	3	3	7	4	3	3	4	1		1		38
12000	1				1	1	1	4	3	3	5	2	14	3	4	2				63
14000				1				3	3	3	4	3	3	4	2	4	1	1		59
16000		1						1	2	3	5	5	7	6		1	1	1		51
18000								1	1	1	1	3	3	1	3	1				14
20000							1	1	3			1	2	1		1				13
22000								1	1	2			2	3			1			13
24000									1	1	1	1		1	1					4
26000										1			1	2		1				5
28000									2					2			1			3
30000									1											1
32000												1						1		2
34000						1				1	1			1						4
36000											1									1
38000															1					1
40000															1					1
42000									1											1
CUM	1	5	5	10	14	14	19	32	46	42	48	59	67	65	77	88	104	121	139	421

CLM 5
48
88
182
202
222
303
340
371
385
395
409
409
414
417
418
420
424
425
426
427
428

FE03-044 5889



2C32 9F856 Claims	7925
7.3L 2C32 8F856 single-claim VINs	7205
Repeat Claims	720

REBIN

Single-Claim VINs	7205
Electrical	72
Other	748
Pedal	6384

72	72
189	1329
6864	5604

Multiple-Claim VINs	720
Electrical - Original Claims	7
Electrical - Repeat Claims	4
Other - Original Claims	70
Other - Repeat Claims	63
Pedal - Original Claims	269
Pedal - Repeat Claims	267

7
4
70
38
269
312

BIN	Keywords	D Repeat	Grand Total	
Other	(No Tech Comm)	177	12	189
	Accelerator Pedal	177	12	189
	Clams 4 40	173	5	178
	Cryptic "BOP"	41	1	42
	ENG PERM	148	5	153
	MS/Switch	126	4	130
	P0221, P0122 or	277	9	286
	(blank)	275	19	294
Other Total		1395	67	1462

Move to Pedal

Move to Pedal

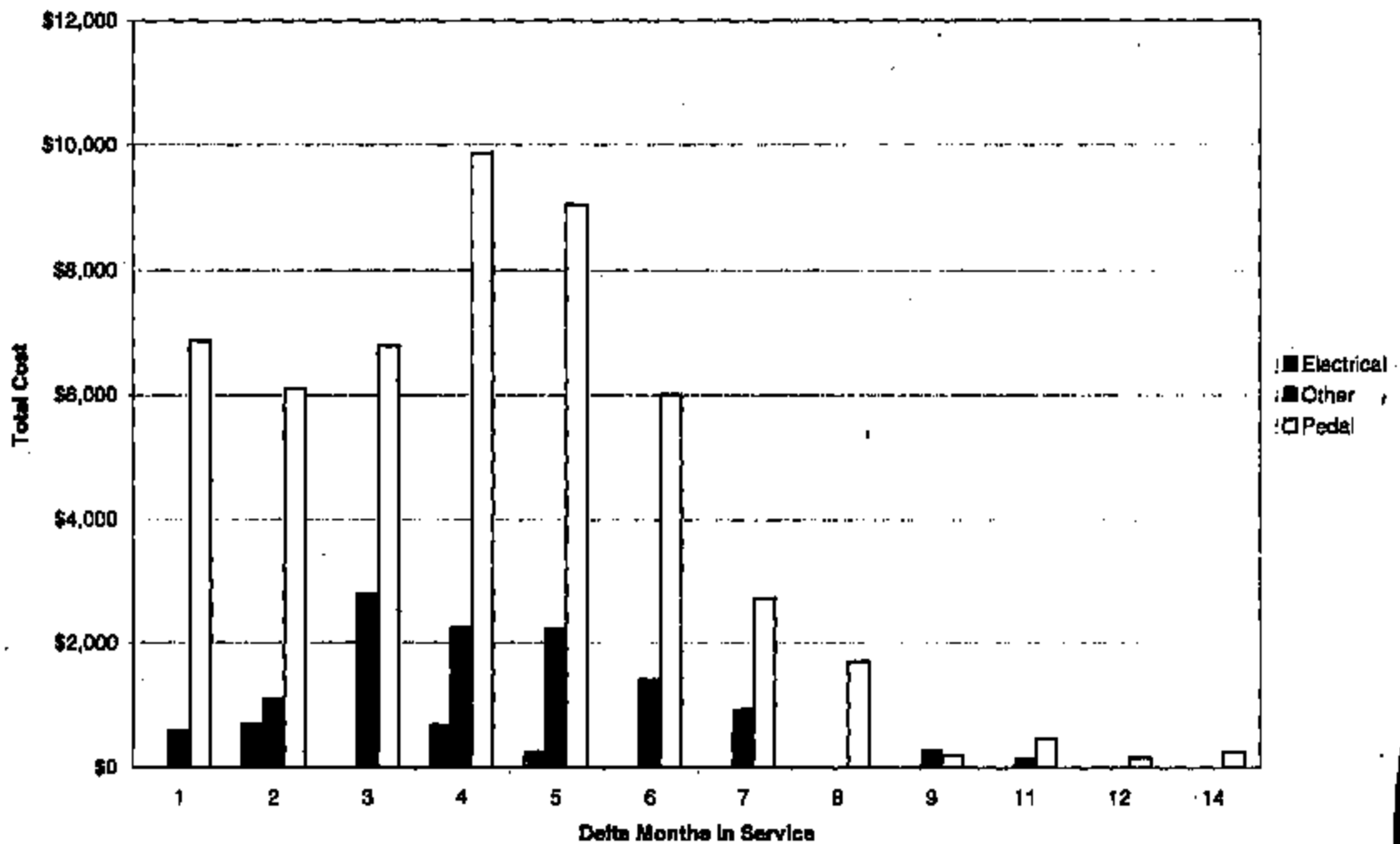
Move to Pedal

(No Tech C)	177	12	189
Clams 4 40	173	5	178
Cryptic "BOP"	41	1	42
ENG PERM	148	5	153
(blank)	275	19	294

837

BIN	Date	FALSE	TRUE	Grand Total
Electrical	Count of VIN	79	4	83
	Sum of Total Cost	19060.71	1644.8	20705.51
Other	Count of VIN	1369	63	1432
	Sum of Total Cost	372908.07	11726.28	284634.3
Pedal	Count of VIN	6363	267	6630
	Sum of Total Cost	1111877.42	58219.56	1162097
Total Count of VIN		7971	894	7928
Total Sum of Total Cost		1403647.2	63659.22	1467438

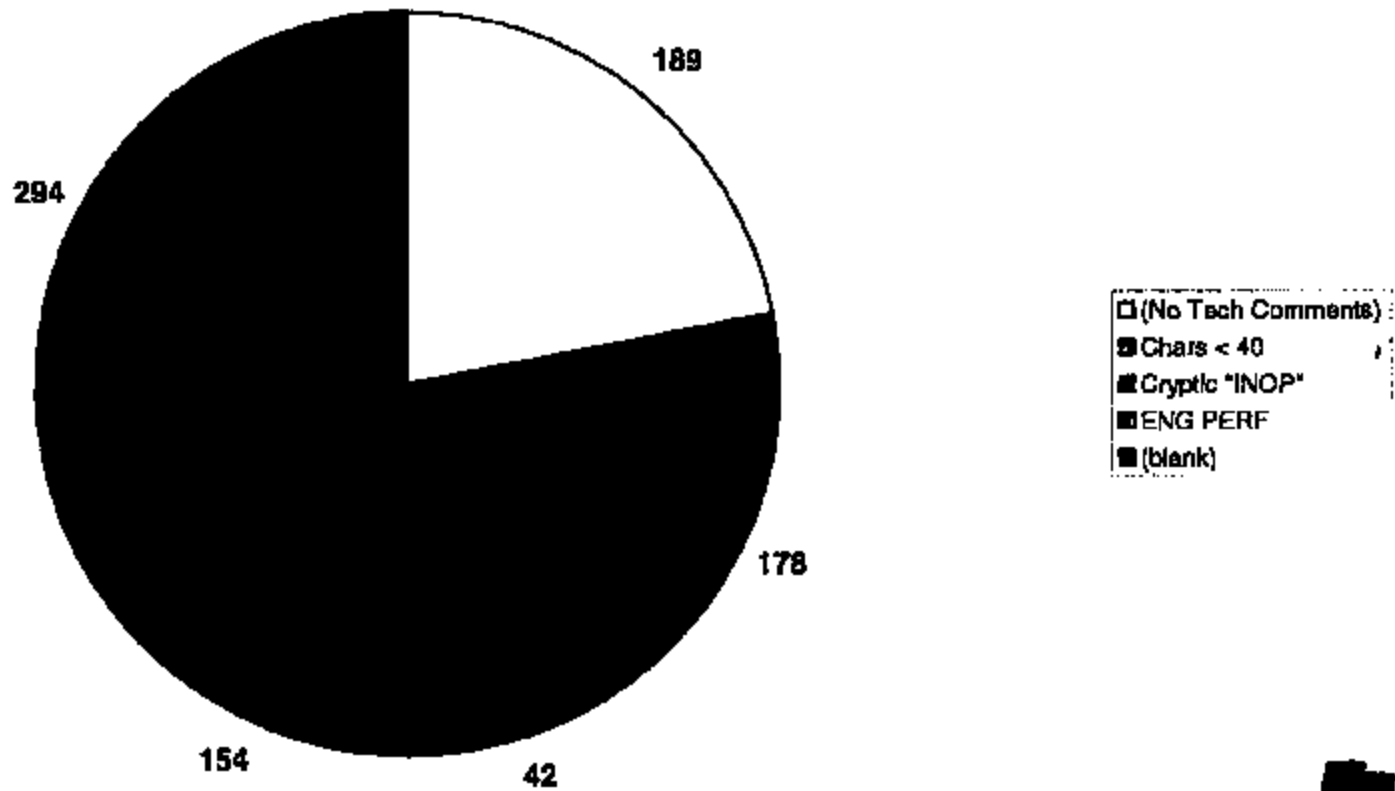
2C3Z 9F836 - Distribution of Times to "Repeat Repair"



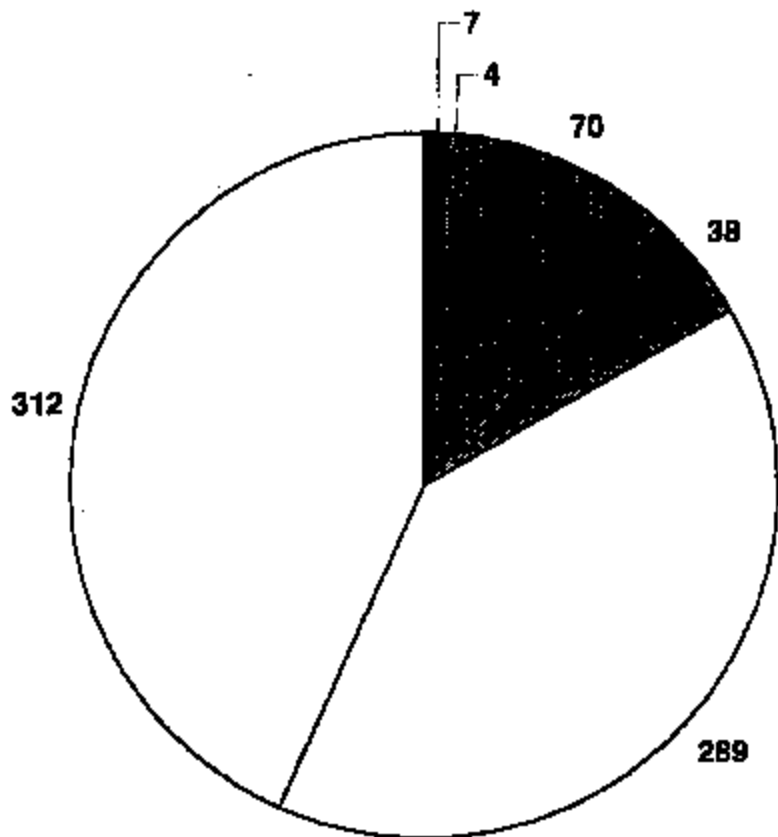
FE03-044 2002



Breakdown of All "Other" (857) Verbatims by Category



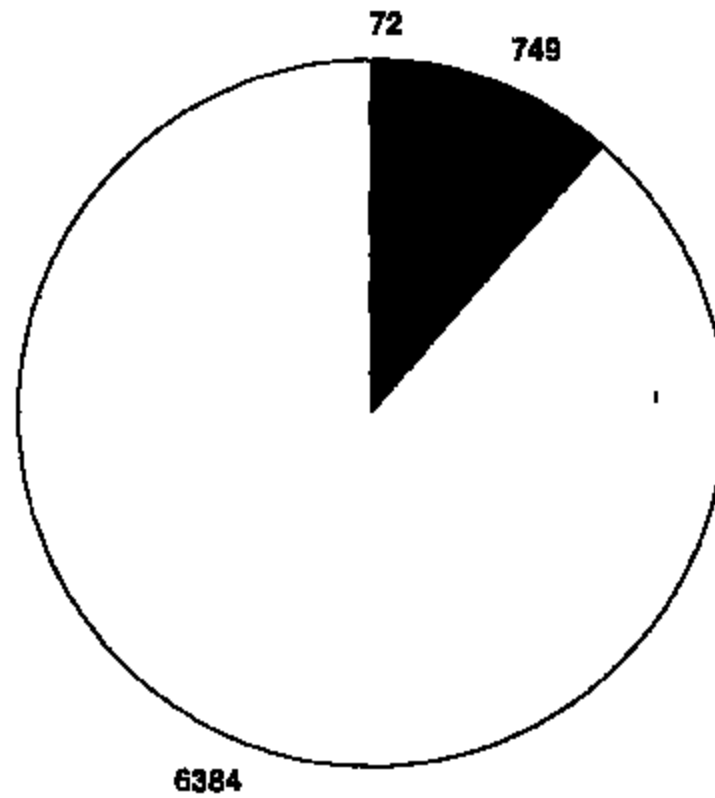
**2002 and 2003 MY 2C3Z 9F836 Claims Repeat Analysis
Multiple-Claim VINs by Cause**



- Electrical - Original Claims
- Electrical - Repeat Claims
- Other - Original Claims
- Other - Repeat Claims
- Pedal - Original Claims
- Pedal - Repeat Claims

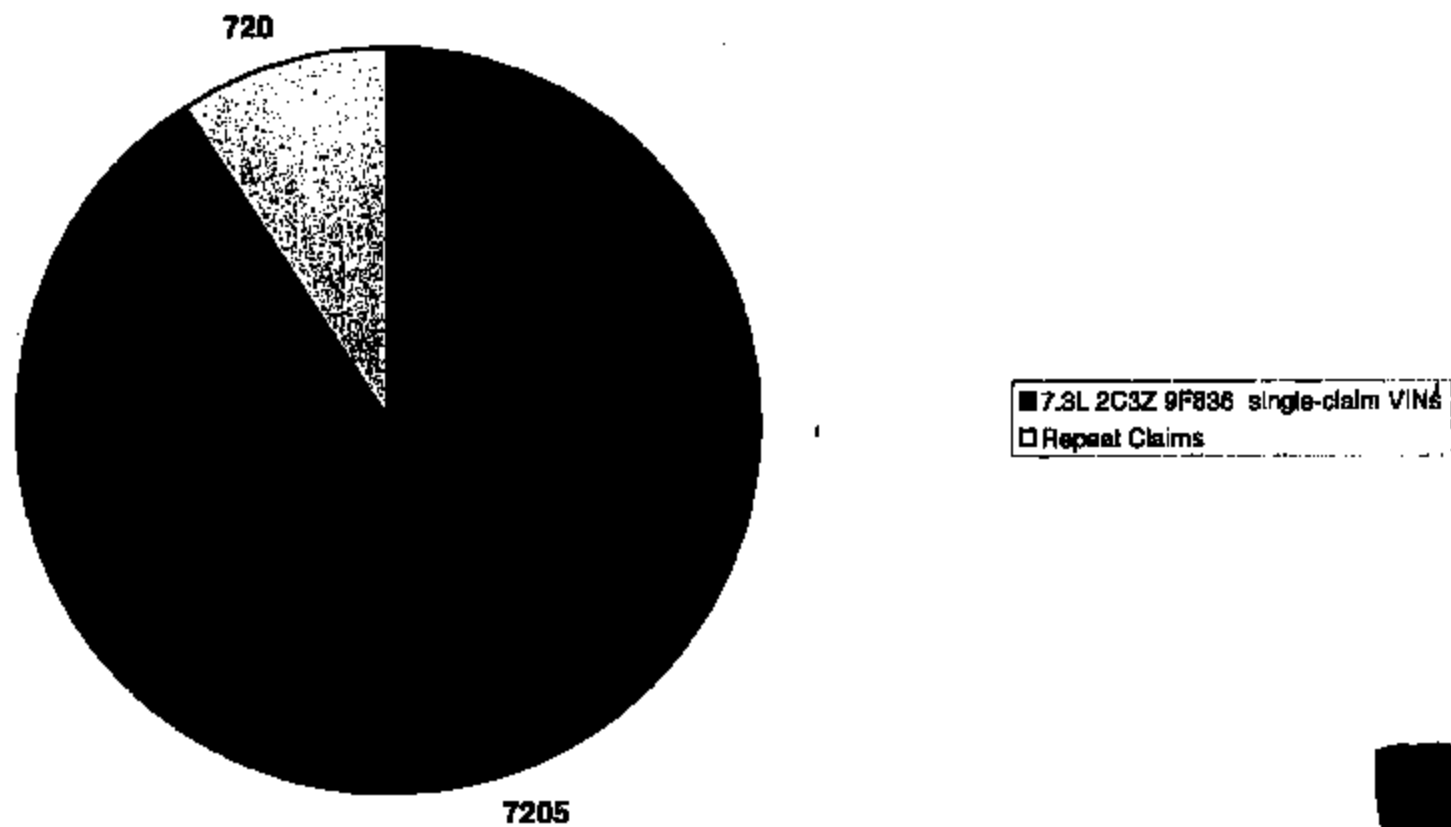


**2002 and 2003 MY 2C3Z 9F836 Claims Repeat Analysis
Single-Claim VINs by Cause**

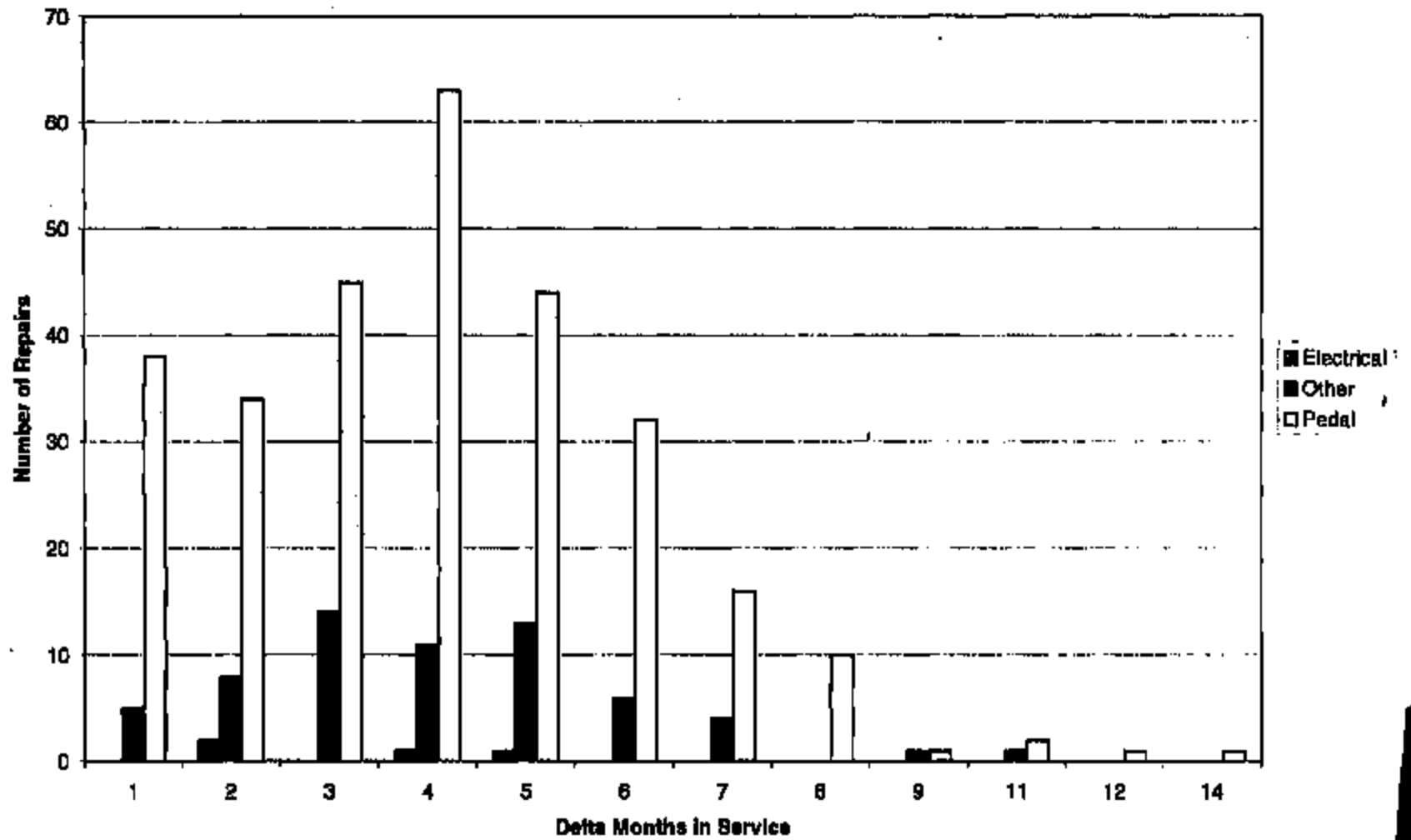


■ Electrical
■ Other
□ Pedal

2002 and 2003 MY 2C3Z 9F836 Claims Repeat Analysis



2C3Z 9F836 - Distribution of Times to "Repeat Repair"



PC93-044 0007



Case, Joseph (J.E.)



From: Abar, Robert (R.B.)
Sent: Friday, June 20, 2003 8:54 AM
To: West, Gregory (G.S.)
Cc: Abar, Robert (R.B.); Case, Joseph (J.E.); Liposky, Lawrence (L.J.)
Subject: Plots for Teleflex Presentation

Importance: High



08 9836 Teleflex
Chart 8-19...

Greg,
File above contains analysis that Joe Case performed and summarized.

Joe started with 8424 total claims and eliminated 499 as redundant claims (same date, same \$, minor description change in some field) leaving him with 7925 total claims, which is what the analysis and the summary charts are based on

Overall his cost file totalled \$1,467,436 for the 7925 claims remaining (which differs by roughly \$20K from your presentation material.

Joe is off today, but will be back on Monday to provide you with any chart revisions for the 6/26 meeting with Teleflex. Joe will also be working on the cost associated with the breakdowns provided in this package on Monday.

For the presentation package I suggest using the following slides:

- Total Claim Chart - Breaks out single (7205) vs multiple repairs (720) 772 6361
- Single Claim Chart - Breaks down the single repairs into electrical (72), other (249), & pedal (6361)
- Repeat Claim Chart - Breaks down the repeat claims into original or repeat claim plus electrical, other, & pedal
- Repeat Repairs vs Delta TIS - Shows electrical not identified beyond 5 months in service

Background Info

Repeat Claim Table - Provides matrix of the delta time-in-service (TIS) & delta mileage since previous repair so team can determine how many repeat repairs could be binned as electrical repeats even though not listed as such. I would suggest doing it on mileage as prime with time-in-service secondary. I would think 4000 or 6000 miles should show up a repeat electrical issue. Chart would indicate 88 for 4000 and 152 for 6000. These number would need to be doubled to include the original repair which would also be assumed to be an electrical issue to 176 for 4000 miles & 304 for 6000 miles respectively. (NOTE: this doubling to capture original failure overcounts a few original repairs if the deltas are from 3rd, 4th, 5th events, but probably not enough of them to worry about)

Initial Claim Table - Provide matrix of TIS & delta mileage for reference

Other - Provides a rough breakdown of the claims that were not binned as pedal or electrical from description provided

Repeat Cost vs Delta TIS - Cost reference for the Repairs plot.

Data Table - Matrix of the values used in the charts

Electrical Issue Total

72 single claim - electrical verbatim

+

11 repeat claims - electrical verbatim

+

304 repeats in 6000 miles or less (or change to other criteria)

+

8 single other - ratioed by the % (1.1) of electrical (72) to pedal+electrical (6384+72=6456) $[749 \times 0.11 = 8]$

+

2 repeat other - ratioed by the % (1.8) of electrical (11) to pedal+electrical (312+289+7+4=612) $[70+38 = 108 \times 0.18 = 2]$

=

397 total electrical (which represents about 5% of the total expended warranty (or roughly \$75K) of the \$1467K.

Robert B. Abar

Manager, Powertrain

(313) 54-54247

FAX: (313) 24-89073

rabar@ford.com

Room: 1CP20/Rotunda C: #4

Mail Drop: LM410

Model Year (All)

BIN	Keywords	Claims	Repeat Data		Count of VIN	Sum of Total Cost	Count of VIN	Sum of Total Cost	Total Count of VIN	Total Sum of Total Cost
			No	Yes						
Electrical	1265	1	6	2,338				6	2,338	
		Blare+Vibe	1	1	362			1	362	
			2	1	269			1	269	
		3			1	296	1	296		
	C 2040	1	1	280			1	280		
	Chems < 4	1	1	73			1	73		
	Wiring Co	1	63	14,454			63	14,454		
		2	5	1,165	2	1,048	7	2,211		
		3	1	120	1	342	2	462		
	Electrical Total			79	18,881	4	1,845	83	20,726	
Other	(No Tech	1	167	28,916			167	28,916		
		2	11	2,170	8	1,842	17	3,212		
		3	3	331	2	267	5	618		
	Chems < 4	1	168	27,010			168	27,010		
		2	12	2,044	1	82	13	2,726		
	Crypto TM	1	38	6,058			38	6,058		
		2	3	334			3	334		
	ENG PER	1	138	32,912			138	32,912		
		2	15	3,638	3	554	18	4,193		
		3	1	297			1	297		
	(blank)	1	266	51,017			266	51,017		
		2	19	4,413	3	388	22	4,799		
		3	3	700	1	198	4	898		
		4	1	140			1	140		
		5	1	73			1	73		
Other Total			841	181,848	18	2,507	857	184,157		
Pedal	Accelerator	1	172	31,221			172	31,221		
		2	13	2,309	2	274	15	2,584		
		3	1	313			1	313		
		4	1	170			1	170		
	Bad+Pedal	1	228	38,888			228	38,888		
		2	8	2,043	6	1,704	14	3,147		
		3	3	440	1	85	4	525		
	Chems < 4	1	324	88,584			324	88,584		
		2	19	3,113	13	1,735	32	4,848		
		3			1	72	1	72		
	Defective	1	2533	473,144			2533	473,144		
		2	141	22,244	95	16,888	236	39,109		
		3	6	861	11	2,419	17	3,300		
		4	4	832	11	2,895	15	3,347		
		5	1	122	1	100	2	222		
	Faulty Ped	1	178	31,880			178	31,880		
		2	7	1,193	3	621	10	1,814		
		3	3	892			3	892		
		4			2	178	2	178		
	IVS/Bwfc	1	121	25,232			121	25,232		
		2	7	1,261			7	1,261		
		3	2	291			2	291		
	PZZZ1 loc	1	138	24,824			138	24,824		
		2	5	1,131	4	530	9	1,661		
		3			1	168	1	168		
	PZZZ1,P0	1	284	85,044			284	85,044		
		2	21	4,111	1	291	22	4,381		
	PED(s) Int	1	848	174,748			848	174,748		
		2	36	7,045	33	8,863	74	13,808		
		3	6	818	8	805	12	1,721		
4		2	468	3	338	5	1,047			
5				1	111	1	111			
Sensor	1	433	84,421			433	84,421			
	2	30	5,430	18	2,527	48	7,957			
	3	1	147	1	235	2	383			
Throttle	1	290	42,528			290	42,528			
	2	12	1,862	5	788	17	2,770			
	3			3	324	3	324			
(blank)	1	784	135,414			784	135,414			
	2	43	7,754	21	3,540	64	11,294			
	3	2	370	3	418	5	788			
Pedal Total			8789	1,238,305	248	43,289	8983	1,282,575		
Grand Total			7689	1,420,015	266	47,421	7925	1,467,436		

Distribution of "Miles Versus TIS To Repeat Repair" (2002 and 2003 MYs, 7.3L Diesel, 2C3Z 9F836)

DM BAND	Delta TIS																		Grand Total	CUM	
	-1	1	2	3	4	5	6	7	8	9	10	11	12	13	14	15	16	17			18
0		1																		5	5
2000		4	4	5	2	3	5		1		3									43	45
4000				1	4	4	4	8	3	2	3	5	3	2	1		1	1		64	88
6000				2	3	1	4	3	6	6	10	5	6	6	4	3	3	1	1	50	152
8000			1	2	2	2	1	4	5	8	6	5	7	3	2		1		1	50	202
10000					2	2	2	5	3	8	7	4	5	6	4	1		1		53	252
12000	1					1	1	4	8	5	2	14	8	3	4	2			1	35	305
14000			1					3	3	3	4	6	3	4	2	4	1	1		31	340
16000								1	2	3	5	3	7	6		1	1	1		14	371
18000							1	1	3		1	3	3	1	3	1				10	385
20000									1	1		2	1		1					10	395
22000											1	1		2	3		1			4	405
24000									1	1				1	1					5	409
26000									2				1	2		1				3	414
28000									1								1			1	417
30000												1						1		2	418
32000									1										1	4	420
34000												1								1	424
36000						1				1	1								1	1	425
38000															1					1	426
40000																1				1	427
48000																				1	428
Grand Tot	1	5	8	10	14	14	18	32	40	42	49	50	47	40	27	15	10	8	2	428	
CUM	1	6	12	22	36	50	68	100	140	182	231	281	328	368	395	410	420	426	428		

1
FE03-044 11478

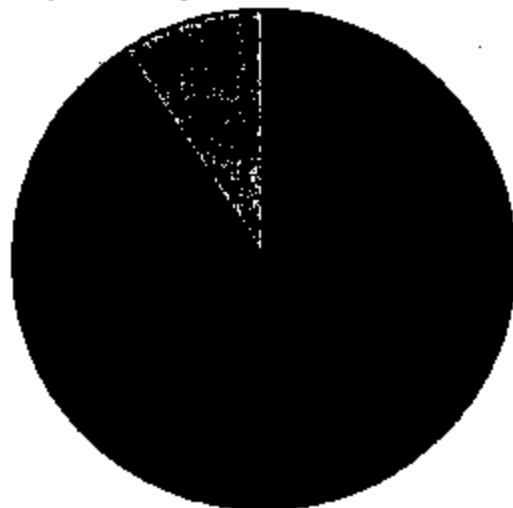
Distribution of "Miles Versus TIS to Repair" for Single Repair VINs (2003 and 2003 MY, 7.3L Diesel, 2C3Z 9F836)

Odo BAND	TIS WSD																				Grand Total	CUM	
	-1	0	1	2	3	4	5	6	7	8	9	10	11	12	13	14	15	16	17	18			25
2000	1	47	50	18	9	3	3	5	3	4	3		1	1							148	148	
4000			23	38	27	22	5	3	3	1	2	4				1					129	277	
6000		3	1	29	50	49	34	28	8	10	6	4		1	2						220	497	
8000		2	1	23	82	88	82	68	41	22	15	10	8	4	3	2	1	1	1		433	932	
10000			1	12	47	118	117	111	86	57	44	25	18	9	6	2	1				634	1606	
12000				5	41	108	131	121	101	84	61	44	39	25	10	7	7				781	2387	
14000		1	1	7	50	87	100	139	137	107	82	53	45	35	18	7	2	2	3		848	3233	
16000	1			2	12	51	85	98	115	112	87	69	55	48	19	12	6	2	1		799	4032	
18000	2			4	22	51	60	98	90	103	73	60	55	22	13	10	2	1	1		867	4899	
20000			1	5	18	34	45	71	87	87	75	64	43	34	22	7	12				576	5265	
22000	2	1		1	2	15	16	47	70	56	50	47	59	48	32	19	8	5	1		1	487	5732
24000				4	8	26	29	34	38	45	48	44	45	27	22	14	5	1				369	6121
26000				1	3	8	23	23	38	42	34	37	28	27	13	11	8	4				300	6421
28000				3	8	13	15	26	28	23	31	30	28	17	14	8	2					252	6673
30000				2	5	7	11	18	25	31	18	24	15	14	16	8	3	1				198	6871
32000			1	1	1	1	6	14	19	18	26	28	13	22	9	16	8	1				164	7055
34000	1			1	2		2	4	6	8	7	13	18	27	19	8	7	3	3	1		132	7187
36000	1			1	3	2	2	7	11	7	15	21	14	18	9	7	8	2				125	7312
38000					1			2	1	3	3		2	2	1	6	5	1				28	7338
40000					1				2	8	4	5	8	9	2	7	2	1				47	7385
42000						2		2			3	3	11	4	2	2						31	7418
44000	1					1	2		1	4	1	4	3	1	4	1	4	2				29	7445
46000								1	2	1	4	1	6	2	2	2	3					24	7469
48000							1			2	4	2	1	2	2	2	2	1				17	7486
50000						1			1	1		5	2	2	3	1	1					17	7503
52000								1			1	1		1	3	1	1					9	7512
54000							1							1	1	3	2	1				9	7521
56000														1	3	1	1				1	7	7528
58000														1	1	1						4	7532
60000			1				1	1				1	1	2				1				8	7540
62000														1			1					2	7542
64000																		1				1	7543
66000														1		1		1				3	7546
68000																		1				1	7547
70000														1								1	7548
72000																1						1	7549
74000									1									1	1			3	7552
76000								1	1										1			3	7555
78000															1							1	7556
80000															1							2	7558
82000																		1				1	7559
84000																				1		1	7560
86000																						1	7561
88000													1									1	7562
Grand Total	8	54	78	138	328	582	717	817	854	782	717	637	633	484	337	191	130	89	31	4	1	7662	
CUM	8	63	141	279	607	1189	1906	2723	3577	4369	5086	5723	6279	6758	7096	7287	7437	7526	7557	7561	7562		

PE83-014 11468

2002 and 2003 MY 2C3Z 9F836 Claims Repeat Analysis

720 (\$129,000)

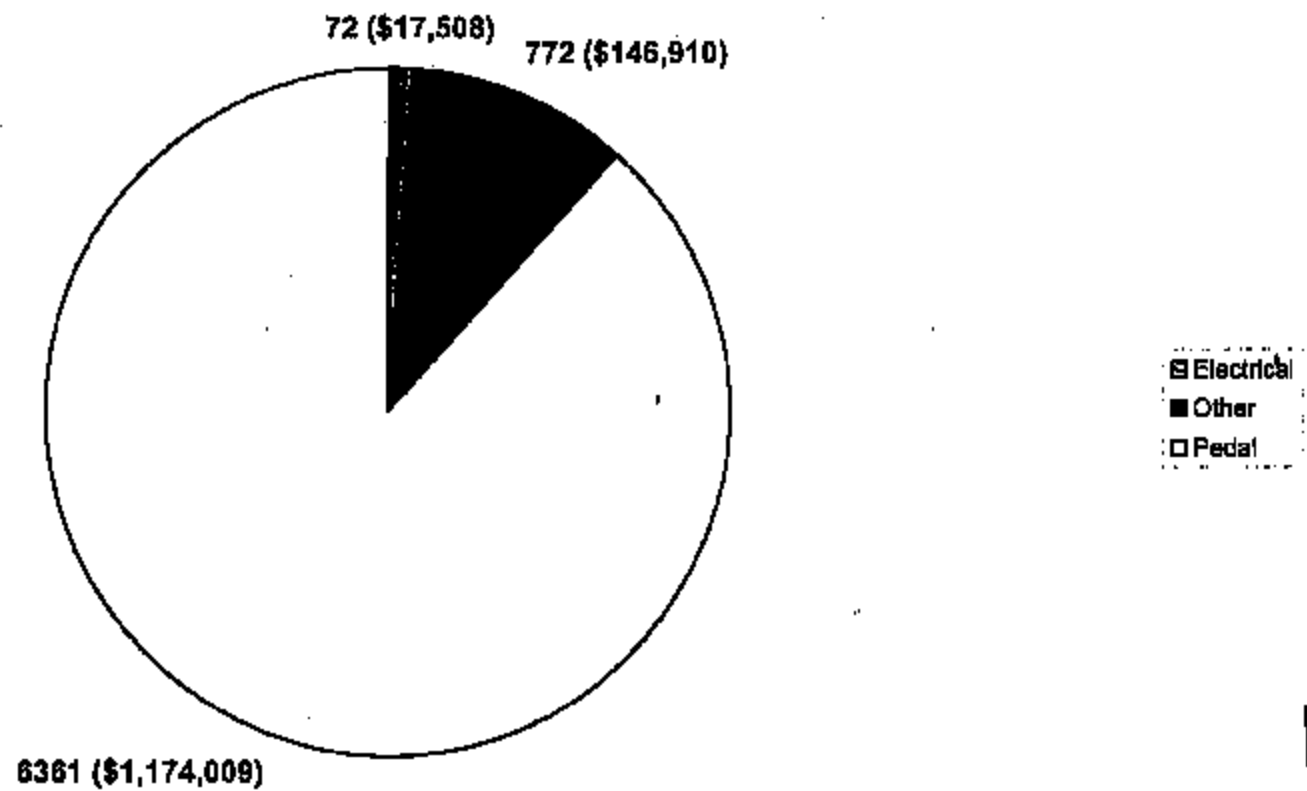


7205 (\$1,338,427)

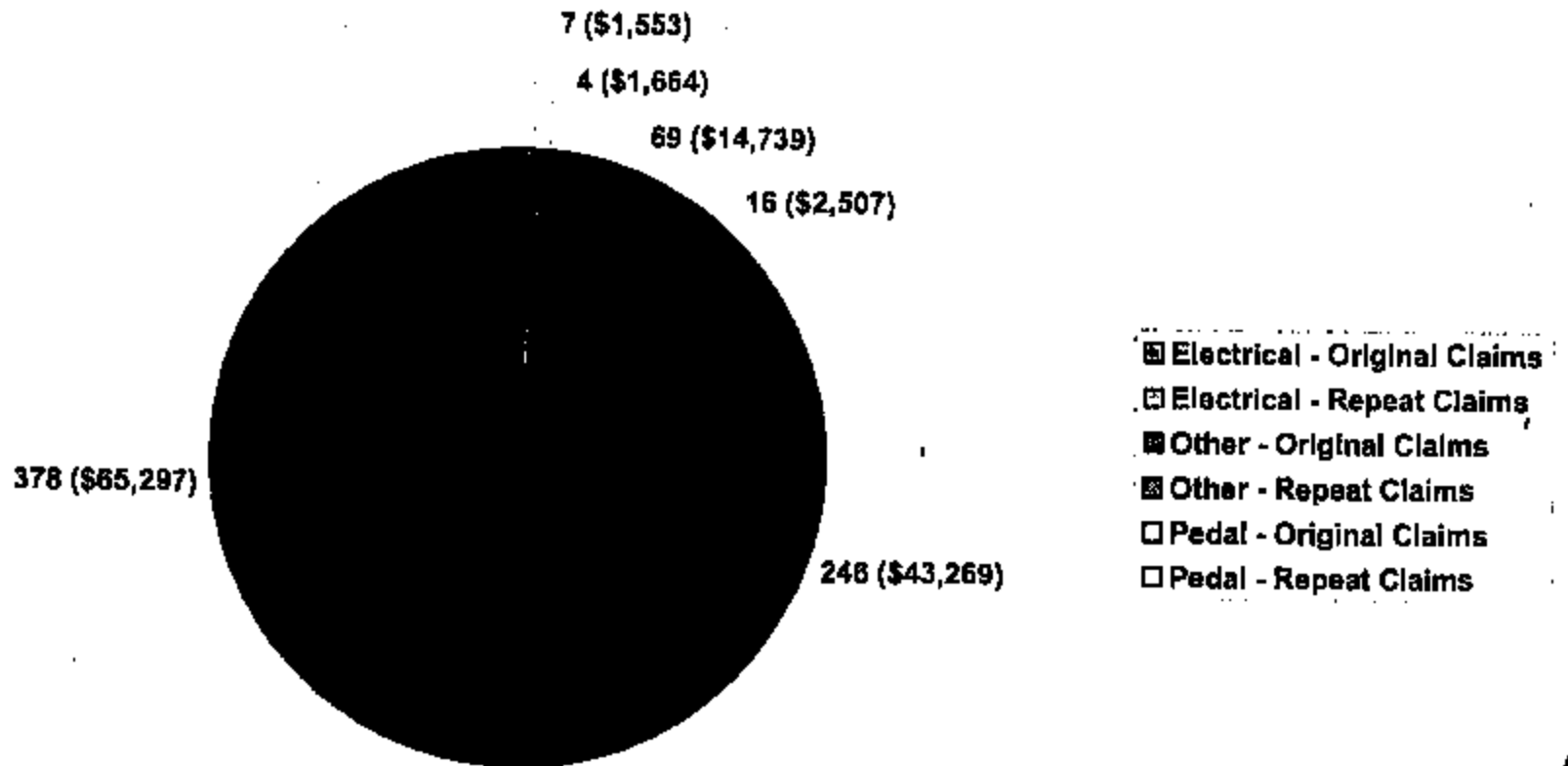
■ 7.3L 2C3Z 9F836 single-claim VINs
□ Repeat Claims

FD03-044 11491

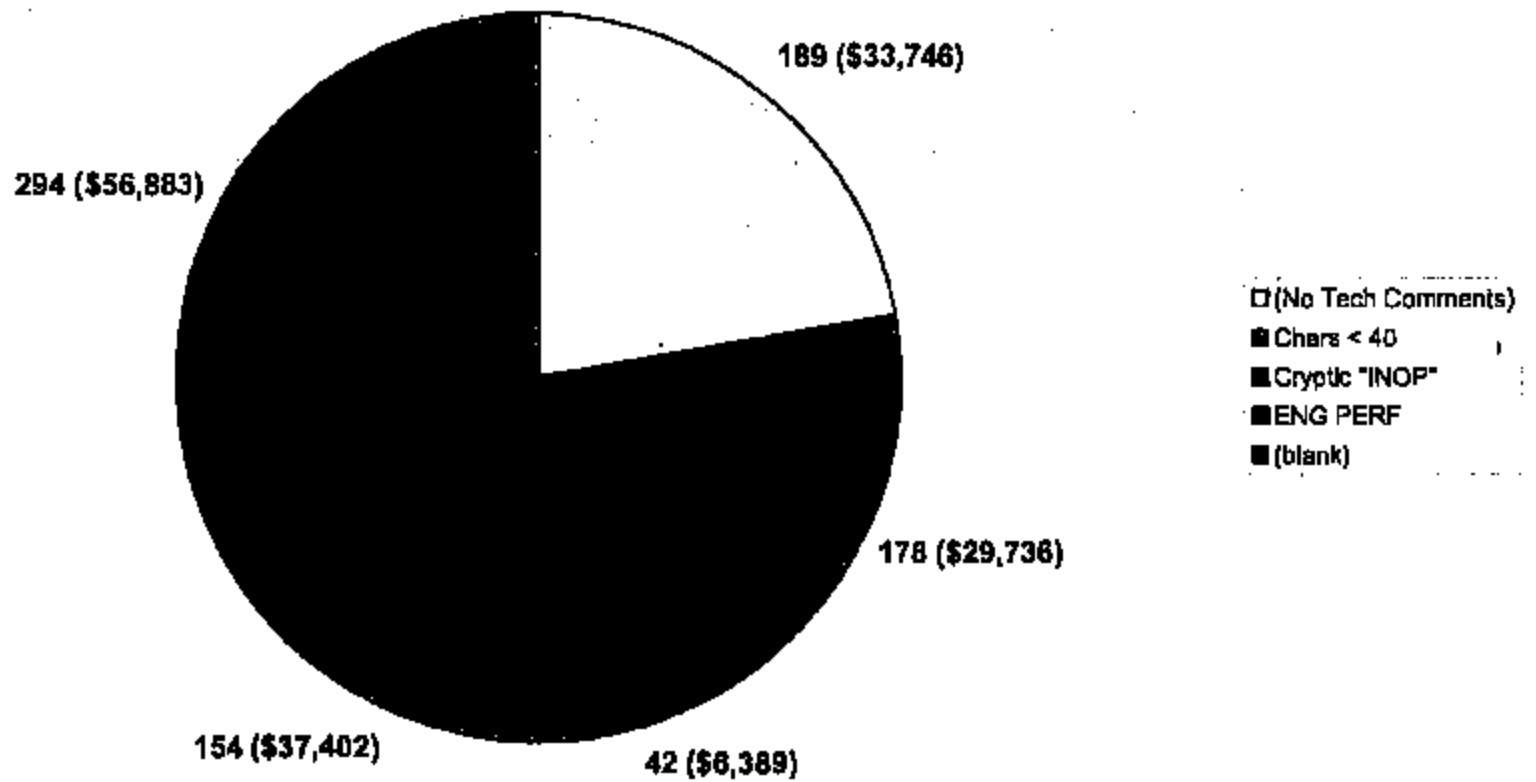
**2002 and 2003 MY 2C3Z 9F836 Claims Repeat Analysis
Single-Claim VINs by Cause**



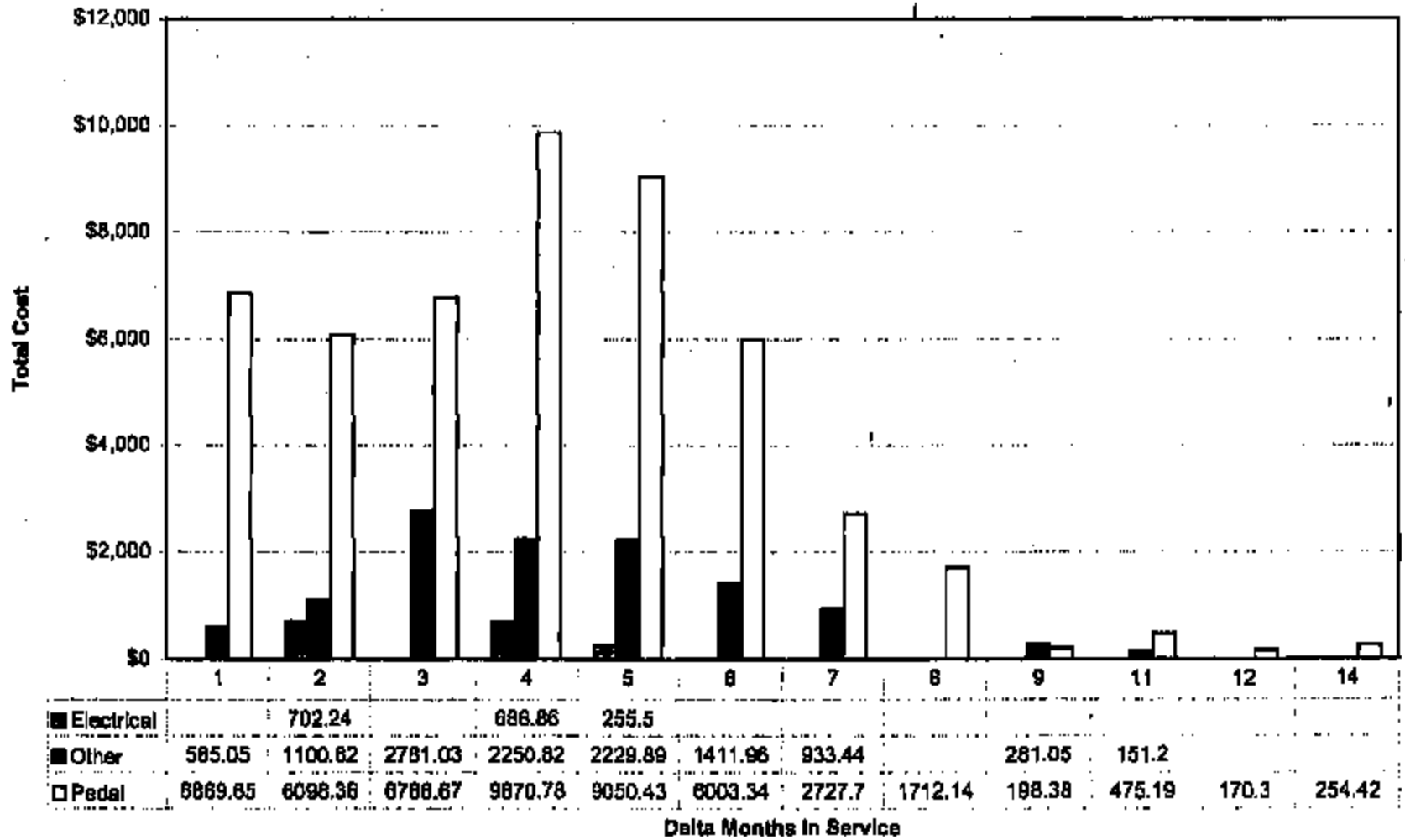
2002 and 2003 MY 2C3Z 9F836 Claims Repeat Analysis
Number of Multiple-Claim VINs by Cause



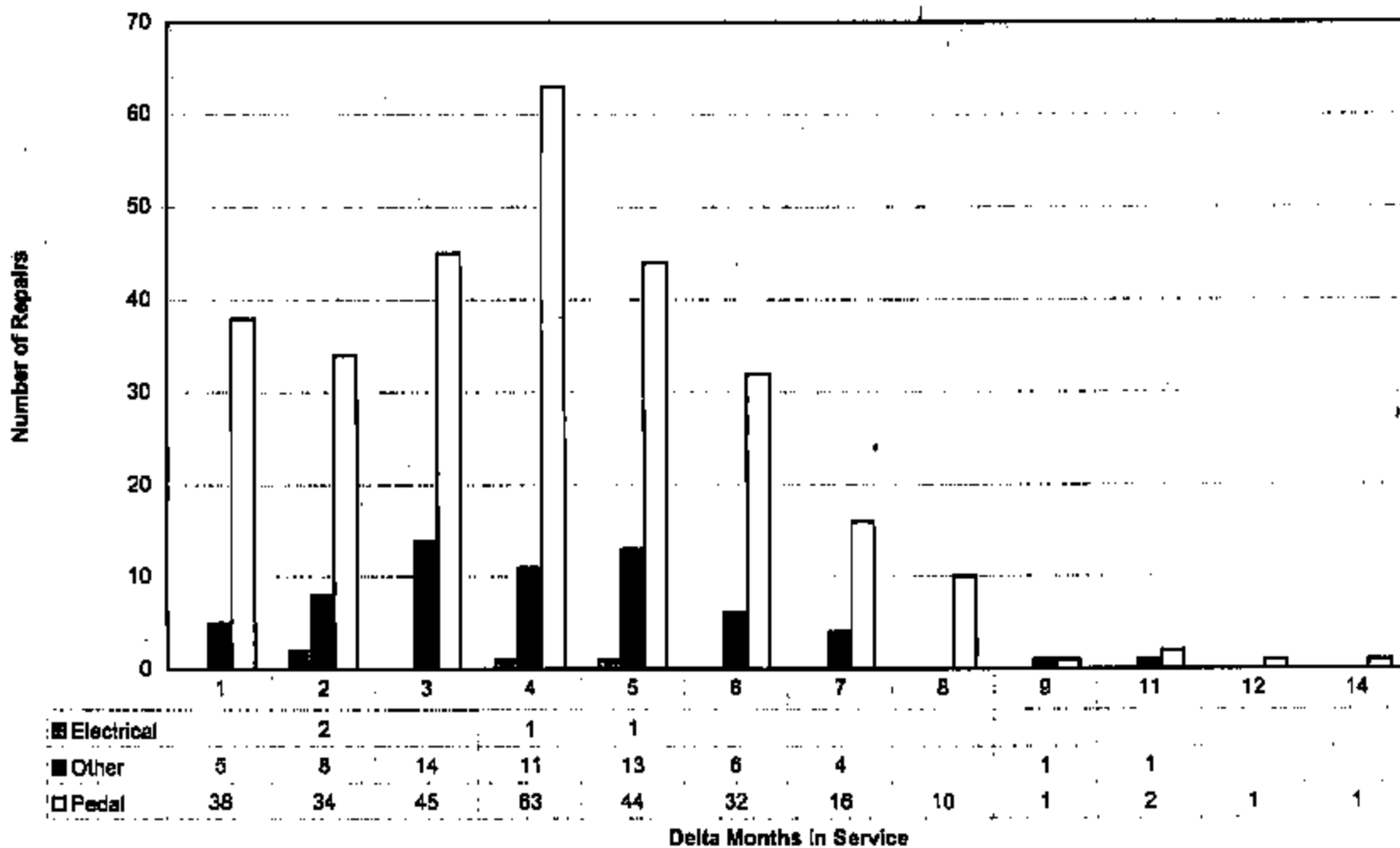
Breakdown of All "Other" (857) Verbatims by Category



2C3Z 9F836 - Distribution of Time to "Repeat Repair"



2C3Z 9F838 - Distribution of Time to "Repeat Repair"



From: Mike Foreman [mforeman@tfxauto.com]
Sent: Thursday, August 08, 2002 8:52 AM
To: Williams Jr. James (J.P.)
Cc: gwest2@ford.com; gbraniff@tfxauto.com
Subject: Re: RE: RE: Teleflex adjustable accel pedal



QA 0145

Card for

NoRubBarLube.doc:bransen@tfxauto.com

James,

The attached document shows what we have done with this change. I'll be happy to answer additional questions you may have.

Thanks,
Mike Foreman

----- Original Message -----

From: "Williams Jr., James (J.P.)" <jwillia5@ford.com>
Date: Thursday, August 8, 2002 7:02 am
Subject: RE: RE: Teleflex adjustable accel pedal

> This sounds ok. Send a picture so I know exactly what to look for
> when they arrive at RTP. Thanks.

>

> -----Original Message-----

> From: Mike Foreman [mailto:mforeman@tfxauto.com]
> Sent: Wednesday, August 07, 2002 5:17 PM
> To: West Gregory (G.S.)
> Cc: Williams Jr. James (J.P.); Liposky Lawrence (L.J.); Sherard Gail
> (G.); Avtar Kalsi (E-mail); Greg Braniff (E-mail); Kramer Michael (M.T.)
> Subject: Re: RE: Teleflex adjustable accel pedal

>

>

> Greg,
> Didn't see your email until after we started building parts this
> afternoon. I had our production identify parts without the lube
> with a BLUE dot on the ETC cover where the pivot pin is. It's
> a round raised area on the cover. We are also labeling the
> containers with sheets that say "NO RUB BAR LOBE". Let me know
> ASAP if this is unacceptable or you would like to see a picture.

>

> Thanks,
> Mike Foreman

>

> ----- Original Message -----

> From: "West, Gregory (G.S.)" <gwest2@ford.com>
> Date: Wednesday, August 7, 2002 2:49 pm
> Subject: RE: Teleflex adjustable accel pedal

> > Avtar/Greg/Mike, per Jim's request please apply a white paint dot
> to the
> > sensor once you stop applying lube to the rotor arm.

>

> > -----Original Message-----

> > > From: Williams Jr., James (J.P.)
> > > Sent: Wednesday, August 07, 2002 3:28 PM
> > > To: West, Gregory (G.S.); Liposky, Lawrence (L.J.); Sherard,
> > > Gail (G.)
> > > Cc: Kramer, Michael (M.T.)
> > > Subject: RE: Teleflex adjustable accel pedal

> >

> > > How will the new pedal s be identified so I can tell in the
> > plant

>> that we
>>> are into the greaseless pedals? I recommend a white paint dot on the
>>> sensor for the first 30 days. This way if there is a squeak
> issue
>> I can
>>> tell right away that it is a pedal without grease. Also, this
> will
>> help identify a failed pedal without the pain staking research of
>> the serial
>>> number/build date.

>>> -----Original Message-----
>>> From: West, Gregory (G.S.)
>>> Sent: Tuesday, August 06, 2002 3:55 PM
>>> To: Liposky, Lawrence (L.J.); Sherard, Gail (G.)
>>> Cc: Williams Jr., James (J.P.); Kramer, Michael (M.T.)
>>> Subject: Teleflex adjustable accel pedal

>>> I received 2 pedals from TFX today without the rotor arm lube
>>> applied. I
>>> could not hear any difference in noise at my desk or in vehicle
>>> when the
>>> pedal was rotated. TFX and I agree the best interim corrective
>>> action is
>>> to eliminate the lube until further testing can be completed so
>>> I gave
>>> them that direction. I have contacted STA because an SREA must
>>> be
>>> signed to make this request official.

>>>
>>>
>>>
>>>
>>>

Teleflex Inc. Automotive Division Kendallville, IN	Originator: Karen Etgen	QF 14.1.1.3	PAGE 1 OF 1 Alert No.: QA 0145 NoRubBarLube.doc
---	-------------------------	-------------	---

Revision Record	Revised By	Date
Initial Release	B. Franklin	08/21/01

QUALITY ALERT

TELEFLEX PART NUMBER:	026T-G0133	ISSUED BY:	M. Foreman
PROCESS:	U137 Accel OP110 & 150	IMPLEMENTATION DATE:	08/07/02
CONCERN/CCIW ISSUED:	() YES (x) NO	EXPIRATION DATE:	09/06/02
CONCERN NUMBER:	N/A	CCIW NUMBER:	N/A

(Detail)

*** CHANGE IN PROCESS ***

1. DO NOT APPLY LUBE TO RUB BAR ON ETC COVER OR INTERMEDIATE HOUSING.
2. APPLY BLUE DOT TO ETC COVER AT PIVOT AREA.
3. LABEL SHIPPING CONTAINERS ON 4 SIDES WITH "NO RUB BAR LUBE"

OPERATION 110



DO NOT APPLY LUBE
TO RUB BARS

OPERATION 150



APPLY BLUE DOT TO THIS
AREA OF ETC COVER



LABEL 4 SIDES OF THE
SHIPPING CONTAINERS

DISTRIBUTION

X	QUALITY COORDINATOR	X	MANUFACTURING MANAGER	X	ENGINEERING MANAGER
X	Q.A. MANAGER	X	PRODUCTION SUPERVISOR	X	INFORMATION BOARD
X	MAT'L. MANAGER	X	PRODUCTION SUPERVISOR		AREA INSPECTOR