

303		156002	1	USA	*	V42	F7	S11
301	USA	127043	2	USA	*	V44	F7	S11
301	USA	127043	E93	USA	*	V44	F7	S11
318	USA	123985	E84	USA	*	V42	F7	S11
417	USA	153480	1	USA	*	V44	F7	S11
849	USA	172489	2	USA	*	V44	F7	S11
281	USA	152130	1	USA	*	V42	F7	S11
810	USA	121543	1	USA	*	V44	F7	S11
303	USA	169007	1	USA	*	V44	F7	S11
803	USA	162447	2	USA	*	V44	F7	S11
512	USA	152732	1	USA	*	V40	F7	S11
819	USA	171086	1	USA	*	V41	F7	S11
808	USA	152440	1	USA	*	V44	F7	S11
470	USA	162508	1	USA	*	V44	F7	S11
261	USA	124435	2	USA	*	V41	F7	S11
872	USA	152002	1	USA	*	V44	F7	S11
812	USA	147589	2	USA	*	V44	F7	S11
214	USA	162923	E84	USA	*	V41	F7	S11
817	USA	162012	E84	USA	*	V48	F7	S11
863	USA	124475	1	USA	*	V44	F7	S11
958	USA	148224	2	USA	*	V44	F7	S11
787	USA	172417	1	USA	*	V44	F7	S11
301	USA	127004	1	USA	*	V44	F7	S11
062	USA	127429	2	USA	*	V44	F7	S11
517	USA	102008	1	USA	*	V44	F7	S11
638	USA	153347	1	USA	*	V44	F7	S11
940	USA	182408	1	USA	*	V44	F7	S11
978	USA	121615	2	USA	*	V44	F7	S11
468	USA	174045	2	USA	*	V41	F7	S11
817	USA	152012	E84	USA	*	V42	F7	S11
809	USA	121240	2	USA	*	V44	F7	S11
503	USA	198597	E84	USA	*	V41	F7	S11
772	USA	124404	1	USA	*	V44	F7	S11
859	USA	152732	2	USA	*	V44	F7	S11
010	USA	172205	2	USA	*	V48	F7	S11
490	USA	171178	1	USA	*	V41	F7	S11
281	USA	152002	1	USA	*	V44	F7	S11
878	USA	127054	2	USA	*	V44	F7	S11
201	USA	143158	2	USA	*	V83	F7	S09
809	USA	171151	E84	USA	*	V48	F7	S11
970	USA	160405	E93	USA	*	V17	F7	S08
970	USA	160405	2	USA	*	V44	F7	S11
819	USA	171086	1	USA	*	V42	F7	S11
714	USA	171064	1	USA	*	V44	F7	S11
816	USA	122224	E84	USA	*	V44	F7	S11
382	USA	147493	1	USA	*	V44	F7	S11
488	USA	158009	2	USA	*	V44	F7	S11
	USA	171171	1	USA	*	V41	F7	S11
682	USA	171065	1	USA	*	V44	F7	S11
305	USA	124013	2	USA	*	V41	F7	S11
931	USA	123449	E84	USA	*	V41	F7	S11
872	USA	152012	1	USA	*	V44	F7	S11
816	USA	171031	2	USA	*	V44	F7	S11
321	USA	124535	2	USA	*	V44	F7	S11
908	USA	152124	2	USA	*	V44	F7	S11
281	USA	152055	1	USA	*	V44	F7	S11
850	USA	124480	1	USA	*	V44	F7	S11
809	USA	171150	2	USA	*	V41	F7	S11
809	USA	171150	E93	USA	*	V44	F7	S11
818	USA	172504	E84	USA	*	V40	F7	S11
858	USA	171084	2	USA	*	V44	F7	S11
490	USA	171178	2	USA	*	V44	F7	S11
702	USA	171157	2	USA	*	V41	F7	S11
958	USA	152104	E84	USA	*	V41	F7	S11

2008	1FTNW21F13EA20439	103.64	T/F7	T/F	T/B	T/B	T/E	T/D8	T/D8	A1	8-Aug-02
2008	1FTNW21F13EA21224	270.57	T/F7	T/F	T/B	T/B	T/E	T/D8	T/D8	A1	31-Jul-02
2008	1FTNW21F13EA17020	207.49	T/F7	T/F	T/B	T/B	T/E	T/D8	T/D8	A1	31-Jul-02
2008	1FTNW21F13EA14032	293.84	T/F7	T/F	T/B	T/B	T/E	T/D8	T/D8	A1	8-Aug-02
2008	1FTNW21F13EA11731	36.88	T/F7	T/F	T/B	T/B	T/E	T/D8	T/D8	A1	28-Jul-02
2003	1FTNW21F13EA04851	80.5	T/F7	T/F	T/B	T/B	T/E	T/D8	T/D8	A1	22-Jul-02
2003	1FTNW21F03EA00373	45.01	T/F7	T/F	T/B	T/B	T/E	T/D8	T/D8	A1	13-Oct-02
2003	1FTNW21F03EA78318	251.45	T/F7	T/F	T/B	T/B	T/E	T/D8	T/D8	A1	16-Sep-02
2003	1FTNW21F03EA38578	30.28	T/F7	T/F	T/B	T/B	T/E	T/D8	T/D8	A1	14-Aug-02
2008	1FTNW21F03EA22770	82.18	T/F7	T/F	T/B	T/B	T/E	T/D8	T/D8	A1	5-Aug-02
2003	1FTNW21F03EA20498	64	T/F7	T/F	T/B	T/B	T/E	T/D8	T/D8	A1	15-Aug-02
2003	1FTNW21F03EA16388	70.18	T/F7	T/F	T/B	T/B	T/E	T/D8	T/D8	A1	31-Jul-02
2003	1FTNW21F03EA13633	84.85	T/F7	T/F	T/B	T/B	T/E	T/D8	T/D8	A1	6-Aug-02
2008	1FTNW21F03EA07010	475.7	T/F7	T/F	T/B	T/B	T/E	T/D8	T/D8	A1	28-Jul-02
2008	1FTNW21F03EA06688	35.82	T/F7	T/F	T/B	T/B	T/E	T/D8	T/D8	A1	18-Jul-02
2003	1FTNW20F03EA28051	282.36	T/F7	T/F	T/B	T/B	T/E	T/D8	T/D8	A1	11-Aug-02
2003	1FTNW20F03EA10810	128.87	T/F7	T/F	T/B	T/B	T/E	T/D8	T/D8	A1	6-Aug-02
2003	1FTNW20F03EA10847	138.31	T/F7	T/F	T/B	T/B	T/E	T/D8	T/D8	A1	2-Aug-02
2003	1FTNW20F13EA12640	62.86	T/F7	T/F	T/B	T/B	T/E	T/D8	T/D8	A1	25-Jul-02
2003	1FMSU48F03EA48788	108.41	T/L1	T/F	T/W	T/B	T/E	T/D8	T/D8	A1	22-Aug-02
2003	1FMSU48F73EA48751	44.57	T/L1	T/F	T/W	T/B	T/E	T/D8	T/D8	A1	23-Aug-02
2003	1FMSU48F73EA24688	445.28	T/L1	T/F	T/W	T/B	T/E	T/D8	T/D8	A1	8-Aug-02
2003	1FMSU48F43EA2434	21	T/L1	T/F	T/W	T/B	T/E	T/D8	T/D8	A1	28-Aug-02
2003	1FMSU48F43EA36767	116.97	T/L1	T/F	T/W	T/B	T/E	T/D8	T/D8	A1	15-Aug-02
2008	1FMSU48F33EA27458	88.12	T/L1	T/F	T/W	T/B	T/E	T/D8	T/D8	A1	8-Aug-02
2003	1FMSU48F02EA24978	290.18	T/L1	T/F	T/W	T/B	T/E	T/D8	T/D8	A1	8-Aug-02
2003	1FMSU48F03EA28348	468.81	T/L1	T/F	T/W	T/B	T/E	T/D8	T/D8	A1	18-Aug-02
2003	1FMSU48F03EA38163	382.08	T/L1	T/F	T/W	T/B	T/E	T/D8	T/D8	A1	20-Aug-02
2003	1FMSU43F03EA08698	343.91	T/L1	T/F	T/W	T/B	T/E	T/D8	T/D8	A1	31-Jul-02
2003	1FMSU43F03EA2424	295.88	T/L1	T/F	T/W	T/B	T/E	T/D8	T/D8	A1	21-Aug-02
2003	1FMSU43F03EA08747	32.85	T/L1	T/F	T/W	T/B	T/E	T/D8	T/D8	A1	31-Jul-02
2003	1FMSU43F23EA61040	45.81	T/L1	T/F	T/W	T/B	T/E	T/D8	T/D8	A1	26-Aug-02
2003	1FMSU43F13EA2135	120.85	T/L1	T/F	T/W	T/B	T/E	T/D8	T/D8	A1	18-Aug-02
2003	1FMSU43F13EA08318	241.8	T/L1	T/F	T/W	T/B	T/E	T/D8	T/D8	A1	18-Jul-02
2003	1FMSU43F03EA35487	128	T/L1	T/F	T/W	T/B	T/E	T/D8	T/D8	A1	21-Aug-02
2003	1FMSU41F53EA48676	87.04	T/L1	T/F	T/W	T/B	T/E	T/D8	T/D8	A1	21-Aug-02
2008	1FMSU44F03EA18286	281.3	T/L1	T/F	T/W	T/B	T/E	T/D8	T/D8	A1	30-Jul-02
2003	1FMSU44F23EA16400	286	T/L1	T/F	T/W	T/B	T/E	T/D8	T/D8	A1	30-Jul-02
2003	1FMSU44F13EA88715	160.85	T/L1	T/F	T/W	T/B	T/E	T/D8	T/D8	A1	18-Aug-02
2003	1FMSU42S03EB06382	62.35	T/L1	T/F	T/W	T/B	T/E	T/D8	T/D8	A1	3-Dec-02
2008	1FMSU42F33EA42300	85.44	T/L1	T/F	T/W	T/B	T/E	T/D8	T/D8	A1	22-Aug-02
2003	1FMSU42F13EA80802	72	T/L1	T/F	T/W	T/B	T/E	T/D8	T/D8	A1	10-Sep-02
2003	1FD0W47F03EA30008	28.42	T/F7	T/F	T/B	T/B	T/E	T/D8	T/D8	A1	8-Aug-02
2003	1FD0W47F03EA30008	126.09	T/F7	T/F	T/B	T/B	T/E	T/D8	T/D8	A1	8-Aug-02
2008	1FD0W47F03EA30008	154.48	T/F7	T/F	T/B	T/B	T/E	T/D8	T/D8	A1	8-Aug-02
2003	1FD0W47F03EA30008	178.62	T/F7	T/F	T/B	T/B	T/E	T/D8	T/D8	A1	8-Aug-02
2003	1FD0W47F13EA48388	78.07	T/F7	T/F	T/B	T/B	T/E	T/D8	T/D8	A1	27-Aug-02
2003	1FD0W09F03EA97078	188.34	T/F7	T/F	T/B	T/B	T/E	T/D8	T/D8	A1	12-Aug-02
2003	1FD0W03F03EA31039	27.18	T/F7	T/F	T/B	T/B	T/E	T/D8	T/D8	A1	7-Aug-02
2003	1FDAW67F13EA44103	48.38	T/F7	T/F	T/B	T/B	T/E	T/D8	T/D8	A1	18-Aug-02
2008	1FDAW68F03EA03889	88.7	T/F7	T/F	T/B	T/B	T/E	T/D8	T/D8	A1	24-Sep-02
2008	1FDAW68F23EA08011	82.89	T/F7	T/F	T/B	T/B	T/E	T/D8	T/D8	A1	23-Jul-02

18-2	22	NORTH COUNTRY FORD	8784801	4271120	5T01	2C3Z	9F838	DE	D38	42	9-Dec-02	3	321813
28-Aug-02		LONG-LEWIS FORD	27406601	9888673	5T01	2C3Z	9F838	DA	E28	28	18-Dec-02	4	305632
11-Oct-02		MIKE BROWN FORD	2015801	5731111	5T01	2C3Z	9F838	DE	E28	42	13-Jan-03	4	402028
6-Nov-02		CAL WORTHINGTON FORD	20638001	2785200	5T01	2C3Z	9F838	DE	E28	42	16-Jan-03	3	472945
22-Aug-02		PECHLER FORD MERCURY	1082818	8409104	5T01	2C3Z	9F838	DE	M58	42	3-Mar-03	7	882418
14-Aug-02		DUNN FORD COMPANY	8001851	8674321	5T01	2C3Z	9F838	DA	E28	42	19-Dec-02	5	323580
8-Dec-02		GALPIN FORD	8772291	7673800	5T01	2C3Z	9F838	DE	D42	42	29-Dec-02	1	338885
13-Dec-02		MYE FRONTIER FORD, INC.	8884501	3786658	5T01	2C3Z	9F838	DE	D38	42	7-Feb-03	2	526346
3-Sep-02		ARROW FORD, INC.	12918801	8828508	5T01	2C3Z	9F838	DE	D38	42	18-Feb-03	6	803866
23-Nov-02		CALVIN FORD	788152	2873585	5T01	2C3Z	9F838	DE	G28	42	28-Jan-03	3	486788
31-Oct-02		HALL FORD	328884A	8885708	5T01	2C3Z	9F838	DE	P68	42	8-Feb-03	4	808267
22-Aug-02		DALE BRADLEY MOTORS INC	888851	6438744	5T01	2C3Z	9F838	DA	D38	48	27-Sep-02	2	88844
24-Oct-02		PHIL LONG FORD, LLC	81278801	8538881	5T01	2C3Z	9F838	DE	D42	42	13-Jan-03	3	344488
31-Aug-02		HARRISON FORD, INC.	7880051	8882788	5T01	2C3Z	9F838	DE	C37	84	10-Jan-03	5	406738
25-Aug-02		FORD WEST	8674151	7883873	5T01	2C3Z	9F838	DA	E28	42	8-Nov-02	3	205488
16-Dec-02		LANDERS FORD	84182801	8843873	5T01	2C3Z	9F838	DE	D42	42	14-Jan-03	1	384878
14-Sep-02		GOLDING MOTORS INC	8878851	3725787	5T01	2C3Z	9F838	DE	E88	28	8-Feb-03	5	325473
10-Aug-02		COASTAL FORD	4884761	3444088	5T01	2C3Z	9F838	DE	D60	42	30-Jan-03	8	477854
5-Sep-02		HUBISH MOTOR CO	7421801	8883121	5T01	2C3Z	9F838	DA	D42	42	28-Oct-02	2	176228
18-Sep-02		DAN WIEBOLD FORD	8827151	4884815	5T01	2C3Z	9F838	DE	D38	42	2-Jan-03	4	382018
1-Nov-02		BOVD COUNTY FORD, INC.	1154771A	3282128	5T01	2C3Z	9F838	DE	D60	42	4-Mar-03	5	881473
3-Oct-02		BEACH FORD, INC.	808864C	4882717	5T01	2C3Z	9F838	DE	E28	42	8-Jan-03	4	380000
18-Sep-02		BILL UTTER FORD, INC.	1717851	3217488	5T01	2C3Z	9F838	DE	M58	42	14-Dec-02	3	388887
1-Oct-02		COVERT FORD, INC.	5881481	3484343	5T01	2C3Z	9F838	DE	D50	28	15-Nov-02	2	218887
14-Oct-02		SAM SCAM MOTORS, INC.	8531851	4315177	5T01	2C3Z	9F838	DE	D21	48	28-Dec-02	3	348344
13-Sep-02		FIVE STAR FORD	20078802	8483800	5T01	2C3Z	9F838	DA	E28	28	23-Oct-02	2	158387
28-Aug-02		BERGEYS FORD, INC.	228881	8438038	5T01	2C3Z	9F838	DA	E28	12	1-Nov-02	3	172580
5-Jan-03		MADERA FORD-MERCURY	148828A	6748771	5T01	2C3Z	9F838	DE	D21	42	14-Jan-03	1	433044
31-Aug-02		MAXWELL FORD	834888A	4488000	5T01	2C3Z	9F838	DE	E28	28	17-Dec-02	4	338818
1-Oct-02		PARK CITIES FORD	20881201	3888800	5T01	2C3Z	9F838	DE	D41	42	21-Jan-03	4	438878
13-Aug-02		RON-CARTER FORD, INC.	8444588	3318111	5T01	2C3Z	9F838	DA	L88	42	25-Oct-02	3	188881
16-Sep-02		FORTUNA MOTORS INC	888207A	7258821	5T01	2C3Z	9F838	DE	D42	42	21-Jan-03	5	458348
23-Sep-02		PADRE FORD	383482A	8848200	5T01	2C3Z	9F838	DE	D38	42	11-Nov-02	2	285128
28-Sep-02		RANDALL NOE FORD MERCURY, INC.	168180A	6283775	5T01	2C3Z	9F838	DE	D88	42	27-Jan-03	5	482801
9-Oct-02		HORNE FORD, INC.	2881851	8882121	5T01	2C3Z	9F838	DE	D38	42	28-Feb-03	5	588880
13-Sep-02		DREW FORD	8848281	4847777	5T01	2C3Z	9F838	DE	E28	42	8-Jan-03	4	372886
5-Oct-02		GULLO FORD-MERCURY OF DOMROE	418888A	7588300	5T01	2C3Z	9F838	DE	E28	42	9-Jan-03	4	388817
30-Sep-02		WESTWAY FORD	80283701	8880333	5T01	2C3Z	9F838	DA	D50	41	12-Dec-02	0	362830
8-Oct-02		BOGGUS FORD	8882852	4282888	5T01	2C3Z	9F838	DE	E28	42	21-Jan-03	4	488148
3-Mar-03		BOB PAGAN FORD, INC.	131127A	7440481	5T01	2C3Z	9F838	DE	S15	28	7-Jan-03	1	888825
10-Sep-02		DON REID FORD, INC.	3328731	8447111	5T01	2C3Z	9F838	DE	E28	42	21-Dec-02	4	288877
17-Dec-02		PRESTIGE FORD	28348802	8848873	5T01	2C3Z	9F838	DE	L88	42	21-Feb-03	3	828488
10-Sep-02		FRITTS FORD	3472850	8872121	5T01	2C3Z	9F838	DE	J88	42	12-Feb-03	8	881835
10-Sep-02		FRITTS FORD	2310161	8872121	5T01	2C3Z	9F838	DA	D10	28	18-Oct-02	2	138888
10-Sep-02		FRITTS FORD	2888881	8872121	5T01	2C3Z	9F838	DE	D42	28	12-Dec-02	4	288888
10-Sep-02		FRITTS FORD	3280252	8872121	5T01	2C3Z	9F838	DE	D38	42	27-Jan-03	5	488875
2-Oct-02		EL CAJON FORD	2483482	5788888	5T01	2C3Z	9F838	DE	P68	28	14-Jan-03	4	432148
28-Aug-02		LONG FORD SALES, INC.	8438481	9388278	5T01	2C3Z	9F838	DA	D11	42	28-Oct-02	3	181513
24-Jan-03		CUMBERLAND FORD MOTORS INC	17114101	2488360	5T01	2C3Z	9F838	DE	E28	42	4-Mar-03	2	863884
4-Sep-02		MANTECA FORD-MERCURY, INC.	347801	2888881	5T01	2C3Z	9F838	DE	D21	42	10-Jan-03	5	288888
8-Oct-02		ELENN JONES FORD LINCOLN MERCU	8358801	8388100	5T01	2C3Z	9F838	DE	D42	42	14-Jan-03	4	422888
28-Oct-02		COVERT FORD, INC.	8238781	3484848	5T01	2C3Z	9F838	DE	D50	42	21-Jan-03	3	437853

4868	49	180.84	1.3	2733	NA	MN	31801
6030	49	329.57	4.2	225	NA	AL	31801
7169	49	266.48	3.1	8338	NA	TX	31801
18365	49	342.64	3.8	8810	NA	AK	31801
3205	49	84.58	0.7	2878	NA	NC	31801
12782	49	109.5	1.1	8882	NA	OK	31801
880	49	134.91	1.1	5338	NA	CA	31801
4280	49	300.45	3.1	8711	NA	AK	31801
12387	49	78.28	0.5	2404	NA	TX	31801
7059	49	131.13	1.4	323	NA	TX	31801
7847	49	138	1.2	8842	NA	VA	31801
4315	49	128.18	1.2	11050	NA	CO	31801
8030	49	113.65	0.8	3140	NA	CO	31801
16000	52.47	628.17	7.1	1071	NA	NC	31801
8247	49	104.52	0.7	8440	NA	CA	31801
2379	49	321.38	4.1	2820	NA	TN	31801
15354	49	175.87	2.3	2588	NA	TX	31801
13243	49	180.81	2.2	2838	NA	AL	31801
6347	49	111.35	1	888	NA	NC	31801
8442	49	154.41	1.5	8325	NA	ID	31801
14488	49	137.57	1.8	7840	NA	KY	31801
5851	49	232.28	2	4727	NA	VA	31801
4884	49	70	0.3	2483	NA	TX	31801
4227	49	187.97	1.7	4437	NA	TX	31801
90298	49	118.12	1.1	8089	NA	MO	31801
2889	49	328.18	4.1	28411	NA	AZ	31801
8404	49	257.81	2.8	3600	NA	PA	31801
485	49	431.08	5.3	7801	NA	CA	31801
5882	49	381.91	4.0	2823	NA	TX	31801
19487	49	382.88	4	2405	NA	TX	31801
2282	49	101.35	0.8	4418	NA	TX	31801
8429	49	134.31	1.5	7754	NA	CA	31801
8333	49	188.85	1.8	4584	NA	TX	31801
8885	49	200.8	3.8	2524	NA	TX	31801
18288	49	175	2	883	NA	SC	31801
4277	49	128.04	1.2	5488	NA	CA	31801
8438	49	310.3	3.8	1472	NA	TX	31801
5888	49	337	4	2588	NA	TX	31801
7227	49	188.95	2.3	4488	NA	TX	31801
404	235.02	287.37	0.8	4458	NA	TX	31801
11801	49	114.44	1	4882	NA	FL	31801
7856	13.65	86.65	1	2415	NA	TX	31801
17858	49	78.42	0.4	5557	NA	CA	31801
4248	49	174.08	1.7	8557	NA	CA	31801
12241	49	203.48	2.1	9557	NA	CA	31801
16888	49	225.52	2.4	8557	NA	CA	31801
3888	49	122.07	1	6458	NA	CA	31801
90148	49	182.34	1.8	8278	NA	MO	31801
2804	49	78.18	0.6	2080	NA	KY	31801
15229	49	95.38	0.6	1412	NA	CA	31801
4487	49	147.7	1.4	20380	NA	AZ	31801
3732	49	111.88	0.8	4437	NA	TX	31801

318 PERFORM DIESEL DIAGNOSIS, KOEO PASS KOED RETRIEVE P0221 FAILED ACCELERATOR PEDAL ASSEMBLY, REPLACED PEDAL ASSY.
RAN PERFORMANCE SHEET 1 & A,B,C,D 9 10 A,B 11 14 FOUND CODES P0221, ACCELERATOR PEDAL HAS SHORT IN IT, REPLACED PEDAL ASSEMBLY RETEST OK TEST DROVE OK, 8844.
CHECKED OUT AND ROAD TEST TO VERIFY CONCERN, PIN POINT TEST CODE P0221 RUN DIESEL PERFORMANCE DIAG REPLACE ACCEL. PEDAL ASSEMBLY AND RETEST AND ROAD TEST OK.
TECH CHECKED THE ENGINE PERFORMANCE WILL NOT MOVE, SELF TESTED, PERFORMED AN EEC TEST, PIN POINT TEST, CHECKED FOR THE PIN POINT TEST, GOOD, REPLACED THE THROTTLE PEDAL AND TEST DROVE OK.
CHECKED AND FOUND DRIED OUT BUSHINGS FOR STEERING COLUMN GOING THROUGH FIREWALL, REMOVED BUSHINGS IN FIREWALL, CLEANED BUSHING LUBED BUSHING AND REINSTALLED BUSHING AND RETESTED.
TP NOT WORKING PROPERLY EEC (QUICK TEST) DIAGNOSIS
DOD30 DIAGNOSIS AND REPLACED ACCELERATOR CABLE
CONFIRMED CUSTOMER CONCERN PERFORMED DIESEL DIAGNOSIS SHEET CHECKING FUEL PRESSURE R/P PERFORMING EEC SYSTEM TESTS
REASSEMBLE GAGE APART INSIDE, RAN TEST ON SYSTEM AND RAN PIN POINT TEST ON SYSTEM AND INSTALL NEW PEDAL ASSEMBLY AND TEST DRIVE
RAN NGS, KOEO, KOER, PINPOINT TEST, MONITOR PIDS, AND REPLACED PEDAL ASSY
7647 VEH WILL NOT MOVE BUT WILL GO INTO GEAR PLACED ACCEL PEDAL ON ORDER, PLACED ACCEL PEDAL ON ORDER, VERIFY CONCERN, PERF QUICK TEST WITH NGS FOUND CODE FOR APP SENSOR, MONITORED PERFORMANCE DIAG POOR ACCEL ENGINE PERFORMANCE DIAGNOSTICS 7.3L DI TURBO ENGINE DIAG
EEC TEST & PINPOINT TEST, P0123, REPLACED ACCELERATOR PEDAL ASSEMBLY & CLEARED CODE, OK ON ROAD TEST.
WIRE HARNESS SHORTED BEHIND DASH WIRING ASSEMBLY REPAIR
EEC DIAG ENGINE PERFORMANCE DIAGNOSTICS 7.3L DI TURBO ENGINE DIAG
ACCEL PEDAL SENSOR ASSY OUT OF RANGE DIESEL PERFORMANCE 1 THRU 14 PINPOINT TEST P0221 REPLACED ACCEL PEDAL ASSY RERUN Q TEST OK CC 42
VERIFIED CONCERN CHECK ENGINE LIGHT ON INTERN NO ACCEL RAN ENGINE PERFORMANCE TEST 1 7 @ 14 KOEOCT P0221 MONITORED AP SENSOR WITH NGS SPEC .04 4.01V OPEN REPLACED AP ASSY CLEARED CODE TEST RAN PERFORMANCE TEST 1 14 CODES P0221 REPLACE THROTTLE PEDAL PART PICKED UP FROM ANOTHER DEALER
OK CODES REPLACED GAS PEDAL ASSY TEST DRIVE
THROTTLE PEDAL ASSEMBLY INOP ENGINE PERFORMANCE DIAGNOSTICS 7.3L DI TURBO ENGINE DIAG, KOED CHECK, KOED INJECTOR ELECTRICAL SELF TEST, KOER CHECK, INJECTION CONTROL PRESSURE TEST, PERFORMED NGS TESTS VEHICLE DLC SELECT PCM RUN KOEO ON DEMAND SELF TEST SYSTEM PASS, KOEC RETR. IVE DTC P0221 TP RANGE PERF SELF TEST SYSTEM PASS, KOED INJECTOR SYSTEM PASS, RETRIEVED IN ROAD TEST PERFORM DIESEL DIAG CODE P0221 PINPOINT TEST FOUND THE AP SENSOR TO BE OUT OF RANGE REPLACED THE AP SENSOR CLEAR CODE ROAD TEST RETEST TO VERIFY
SQUEAKS ACCELERATOR PEDAL ASSEMBLY ADJUSTABLE REPLACE
OPEN CIRCUIT ON PEDAL P0221 DIAGNOSIS PIN POINT REPLACED PEDAL WITH ADJUSTABLE PEDALS
PEDAL ASSY, CODE P0221 SERVICE BAY DIAGNOSTIC SYSTEM (SBS) START UP TEST
CHECK CAUSE OF SERVICE LIGHT ON, TP SENSOR FAILED, PERFORMANCE DIAGNOSIS, PINPOINT TEST, ERRATIC OPERATION, ROAD TEST REPLACED TP SENSOR.
VERIFIED CONCERN, WDS DIAG FOUND ACCELERATOR POSITION SENSOR BAD, REPLACE SENSOR, CLEAR CODES AND RETEST.
TEST INTERMITTENT CODE P0220, CALL HOTLINE, TIME FOR ABNORMAL DIAG WITH UPSCAN TOOL AND TIME TO REPLACE ACCELERATOR PEDAL ASSY.
PEDAL ASSY OPEN CIRCUIT
1 PERFORMED DIESEL DIAG ALL TEST PASS TO KOER CODE P0122 MONITORED PIDS NO A/P SIGNAL PERFORMED PINPOINT TEST REPLACED
2262 POSS EXCESS LUBE DURING ASSY LUBE NOT ON BRAKE PEDAL IT IS ON THROTTLE ACTUATOR FOR ADJUSTABLE PEDAL CHECK GAGES NO CONCERNS CONTACT # 100 353 366 REPLACE ADJUSTABLE THROTTLE
6333 C242 12650D, 10X1, D45, D40, D81, 8 MT FOR BP888 CK & DIAG, MIL ON, HOOK UP TO WDS, TEST EEC SYS, KOEO P0122, KOEC P0122, KOER P0122, SELECT PIDS, MONITOR & MAKE RECORDINGS, CK & P.P., REPLACE ACCEL
8892 8006F 2 F1 1 F1X1 1 F2 1 F3 1 F7 2 F8 1 F9 3 F10 1 F11 2 F12 3 F13 1 F16 8 F17 5 2450F 3 12680D43 3 D84 2 (3.8) FC 26 (8700) AP SENSOR INTERMITTANT OPEN, (RECALL) REVISED PCM CA
ENGINE PERFORMANCE DIAGNOSTICS 7.3L DI TURBO ENGINE DIAG
VERIFY ENG ONLY IDLES AT TIMES ENG LIGHT ON REF TO P0221 PINPOINT TEST DIAG ADI INSPECT ACCEL PEDAL REFER TO FE1 KOEO P0221 MONITOR IVS PID (FAR) REPLACE (FAULTY) ACCEL PEDAL RECK (OK) KOED
8444 FAULTY ACCEL PEDAL 8006F 2F1, 1F1X1, 1F2, 1F7, 2F8, 1F9, 3F10, 1F11, 2F12, 2F13, 1F14, 1F16, 8F17, 5F18, 5F19, 2 2450F 30 VERIFIED CONCERN DIAG PID TEST CODE 0221 PERF, PIN POINT TEST FE1 3 FOUND FAULTY AC
VERIFIED CONCERN PERF DIESEL DIAG RETRIEVED CODE P0221 IDLE VALIDATION SWITCH 8 MALFUNCTION INSPECTED WIRING AND TESTED
REPLACE AP ASSY ENGINE PERFORMANCE DIAGNOSTICS 7.3L DI TURBO ENGINE DIAG
TESTED AND SHORT AT MODULE, REPLACED AND RETESTED OK
TRUCK RUNS ROUGH EEC TEST REP ACCELERATOR POSITION SENSOR
DYE TEST, ACCESS CAC TUBE REPLACED OIL GALLEY PLUG DUE TO MISSING O RING
REPLACED ACCEL PEDAL TO CORRECT CONCERN
QUICK TEST CODE P0221 MONITOR TEST PID DATA DISPLAY MONITOR AND RECORD AND PLAYBACK RECORDINGS FOUND ERRATIC PEDAL ASSEMBLY REPLACED PEDAL RETEST CODE P1000 ROAD TEST 2 MILES
NGS TESTED AND QUICK TEST AND CODE P0221 PINPOINT TESTED AND MONITOR PIDS AND INJECTOR FLOW POWER BALANCE AND FOUND ERRATIC THROTTLE PEDAL AND CHECK FUEL PRESSURE AND REMOVED AND
WDS TESTED CODE P0221 PINPOINT TESTED AND MONITOR PIDS AND CHECK FUEL PRESSURE TESTED AND POWER BALANCE AND FOUND IDLE AND FOUND IDLE VALIDATION PEDAL ASSEMBLY INOP REPLACE AND RETEST
DIAGNOSE EEC, CODE P0221, PINPOINT TEST AND MONITOR PID DATA, FOUND AP IVS OPEN, REPLACE AP SWITCH, CHECK SYSTEM, PASS
CHECKED EEC, PID MONITORED, RAN THROUGH DIESEL DIAGNOSIS, PINPOINT TESTED REPLACED GAS PEDAL ASSY, RETESTED CALLED HOTLINE
ENGINE LIGHT ON HESITATED WAIT ACCELERATE TEST RUN EEC TEST P0221 TPS SENSOR OUT OF RANGE INSTALL NEW TPS SENSOR AND RETEST
RAN EEC CHECK HAD CODES P0733 732 221 ALL RELATED TO ACCELERATOR PEDAL ASSY REPLACE ACCELERATOR CHECKS OK
NO POOR WHEN ACCELERATE, SCAN EEC, CODE P0122 (TP OUT OF RANGE) PERFORMED PPT, MONITOR PIDS, ILS ERRATIC WHEN ACCEL PEDAL PRESSED, REPLACED ACCEL, RETESTED OK
FAULTY AP SWITCH DIESEL ENGINE PERFORMANCE STEPS 1 & 8, REPLACE AP SWITCH

LIGHT ON.

VOLTAGE SWING AT APP SENSOR. PINPOINT TEST FOUND INTERNAL OPEN IN APP SENSOR. R AND R APP SENSOR WITH ADJUSTABLE FOOT PEDALS. CLEAR CODE, FINAL QUICK TEST. OK AT THIS TIME

SOLVED

PERFORMED COMPLETION TEST, CRANKCASE PRESSURE TEST, CYLINDER CONTRIBUTION TEST, REPLACE THROTTLE PEDAL ASSEMBLY
THROTTLE SWITCH, PERFORMED DIAGNOSTICS AND TESTING NECESSARY TO REPLACE THE THROTTLE ACCELERATOR PEDAL CLEAR DTC.

REPLACE PEDAL ASSY

REPLACE PEDAL ASSEMBLY, RESET PCM R/T
CALIBRATION LEVEL, DIESEL PERFORMANCE DIAG PINPOINT & REPLACE ACCEL PEDAL REPROGRAM PCM TO LATEST CALIBRATION LEVEL RETEST ROAD TEST AFTER REPAIR

AT THIS TIME NO OPERATION REPLACE ACCEL PEDAL W/ AUTO PEDAL ADJUST
CEL PEDAL R&R AND REPLACE PEDAL RETEST AND ROAD TEST.

FINAL TEST AND RETESTED OK.
TESTED OK

CUST STATES THROTTLE INOP. CHECK ENG LIGHT IS COMING ON. AT TIMES YOU CAN STEP ON GAS AND NOTHING HAPPENS.
CHECK ENGINE LIGHT COMES ON AND WHEN IT DOES THE ACCELERATOR PEDAL WILL NOT RESPOND
CK ENGINE LIGHT COMES ON AND THE VEH DOES NOT HAVE ANY THROTTLE RESPONSE
REPAIR FOR THE CHECK ENGINE LIGHT IS ON WHEN ON THERE IS A LACK OF POWER WHEN COMING TO A STOP, THERE'S NOTHING.
CUSTOMER STATES THERE IS AN AUDIBLE SQUEEK FROM UNDER DASH AREA WHEN STEERING IS TURNED
CHECK ENGINE LIGHT ON AND NO THROTTLE RESPONSE AT TIMES
CUST STATES WILL NOT MOVE WHEN ACCELERATING WITH GAS PEDAL. INTERMIT
CUST CONCERN VEHICLE INTERMITTANTLY HESITATES AFTER COMING TO A STOP AND THEN STARTING OUT HAPPENS 3-4 TIMES A
ENGINE HESITATES SURGES WHEN ACCELERATING (D88) C8 VEH WILL NOT ACCEL WHEN GAS PEDAL IS PRESSED
CUST STATES EMISSION LIGHT IS ON
CUST. STATES. VEH. WILL GO INTO GEAR AND REVERSE BUT WILL NOT SPEED UP
CUSTOMER STATES THAT VEHICLE HAS NO POWER UNDER ACCELERATION (IDLE ONLY)
TOW IN, CUSTOMER STATES AS SOON AS YOU TOUCH THE THROTTLE IT TAKES OFF VERY QUICKLY. REVS HIGH, THEN DROPS WAY DOWN.
C 8 VEHICLE WILL NOT START...HAS NO ELECTRICAL POWER
CUST SAYS CHECK ENG LIGHT ON WHEN HAPPENS EXCELLERATOR DOES NOTHING
C 8 VEHICLE LOSES POWER W DRIVING GOES TO IDLE RELEASING GAS PEDAL AND REAPPLYING WILL MAKE GO AGAIN CK AND ADVISE
C 8 CHECK ENGINE LIGHT COMES ON INTERMITTENTLY
CUSTOMER STATES AT IDLE WILL NOT ACCELERATE, THEN CUTS OFF, CHECK ENGINE LIGHT IS ON
CHECK THROTTLE, C 8 THE THROTTLE NOT OPERATING CORRECTLY
CHECK NO ACCELERATION FROM GAS PEDAL, STEP ON GAS AND WONT GO
CUST STATES WHEN DRIVING TRIED TO GIVE GAS AND HAD NO ADDITIONAL POWER
*** CEL CAME ON & THEN WENT OFF *** "DRIVEABILITY" CHECK ENGINE LIGHT IS ON INTERMITTENTLY OTHER E20 CHECK ENGINE LIGHT TROUBLES:
CK ACCELL PEDAL SQUEAKS
D60 CHECK ENG NO ACCL UNDER LOAD ADVISE.
ENGINE STILL STALLING
CHECK CAUSE OF SERVICE ENG LIGHT ON. VEH IS SHIFTING HARSH BETWEEN 2 AND 3. ADVISE
CHECK ENGINE LIGHT ON, NO POWER
VEH STALLED THREE TIMES WHILE DRIVING.
CK ENGINE LIGHT ON AND SLUGGISH TO ACCELL
D41 ENGINE WOULD NO ACCEL... AND CHECK ENGINE LIGHT COMES ON
CK OIL LEAK LEAKING DOWN BRAKE PEDAL

CUST. STATES HESITATION ON ACCELERATION INT.
CUST STATES WHILE DRIVING DOWN HWY HAD NO EXCELLERATION, MOTOR WAS RUNNING JUST NO FORWARD MOTION.
CHECK ENGINE LIGHT IS ON SLOW ON ACCELERATION
THE CHECK ENGINE LIGHT IS ON, 338 WHEN ACCEL. THERE IS NO RESPONSE SOMETIMES.
CK ENGINE LITE IS ON
CUSTOMER STATES WAS DRIVING AT HWY SPEEDS AND VEHICLE CUT OUT AND WOULD NOT ACCEL. SPEED DROPED TO
LOSES POWER, CK ENGINE LIGHT ON
SEATS WONT PROGRAM FOR REMOTE
CUST STATES TRUCK STARTED TO RUN ROUGH AND THEN THE CK ENGINE LAMP CAME ON, DIESEL
CUSTOMER STATES THE ENGINE LEAKS OIL
ACCEL PEDAL IS INOP AT TIMES
CUST STATES ACCELERATOR PEDAL IS INOP AT TIMES ENGINE JUST IDLES WHEN ACCELERATOR IS PRESSED.
CHECK AND ADVISE CUSTOMER STATES WAS DRIVING 80MPH WITH CRUISE CONTROL ON LOST ALL ACCEL. HAD TO TAP ON BRAKE PEDAL TO REGAIN SPEED AND POWER
CHECK AND ADVISE VEHICLE WONT ACCELERATE
CUST STATES THROTTLE INOP PUSH ON THE GAS PEDAL TRUCK WILL NOT MOVE
ENGINE RPM WILL GO HI LOW
ENGINE LIGHT ON
CUST STATES HE LOSES THROTTLE INTERMITTENTLY

A88 VEHICLE WOULD NOT RESPOND TO ACCEL PEDAL. NO ACCEL. TOW IN.

783	L	168012	2	USA	*	V41	F7	S11	
885	USA	123016	1	USA	*	V44	F7	S11	
817	USA	152412	2	USA	*	V44	F7	S11	
887	USA	171172	E84	USA	*	V44	F7	S11	
292	USA	127443	2	USA	*	V87	F7	S10	
018	USA	152587	E84	USA	*	V44	F7	S11	
818	USA	173040	1	USA	*	V41	F7	S11	
887	USA	174548	1	USA	*	V41	F7	S11	
815	USA	182881	E84	USA	*	V41	F7	S11	
488	USA	182188	2	USA	*	V83	F7	S08	
757	USA	187081	2	USA	*	V48	F7	S11	
748	USA	188208	2	USA	*	V41	F7	S11	
719	USA	198443	2	USA	*	V41	F7	S11	
784	USA	124218	E84	USA	*	V18	F7	S08	
582	USA	177047	1	USA	*	V44	F7	S11	
801	USA	123008	2	USA	*	V41	F7	S11	
815	USA	188488	E84	USA	*	V44	F7	S11	
251	USA	184522	E84	USA	*	V44	F7	S11	
784	USA	123883	2	USA	*	V41	F7	S11	
288	USA	198588	1	USA	*	V41	L1	S11	
808	USA	167406	E84	USA	*	V44	L1	S11	
757	USA	127064	2	USA	*	V44	L1	S11	
840	USA	152408	1	USA	*	V38	L1	S05	
812	USA	182883	1	USA	*	V44	L1	S11	
573	USA	183784	1	USA	*	V42	L1	S11	
480	USA	171174	2	USA	*	V44	L1	S11	
216	USA	118837	1	USA	*	V44	L1	S11	
558	USA	172432	2	USA	*	V42	L1	S11	
812	USA	182888	1	USA	*	V44	L1	S11	
214	USA	162012	E84	USA	*	V41	L1	S11	
281	USA	182130	1	USA	*	V44	L1	S11	
787	USA	172458	1	USA	*	V41	L1	S11	
281	USA	152088	2	USA	*	V41	L1	S11	
872	USA	158488	1	USA	*	V41	L1	S11	
843	USA	121727	E84	USA	*	V41	L1	S11	
818	USA	171880	1	USA	*	V44	L1	S11	
808	USA	182885	2	USA	*	V44	L1	S11	
872	USA	182013	1	USA	*	V44	L1	S11	
866	USA	182884	1	USA	*	V44	L1	S11	
488	USA	182753	1	USA	*	V05	L1	S08	
487	USA	182214	1	USA	*	V44	L1	S11	
872	USA	182812	2	USA	*	V44	L1	S11	
888	USA	172482	E84	USA	*	V17	F7	S08	
888	USA	172482	2	USA	*	V40	F7	S11	
888	USA	172482	E84	USA	*	V41	F7	S11	
888	USA	172482	E84	USA	*	V41	F7	S11	
818	USA	171078	1	USA	*	V48	F7	S11	
838	USA	182333	1	USA	*	V40	F7	S11	
888	USA	121780	1	USA	*	V44	F7	S11	
288	USA	172436	E84	USA	*	V42	F7	S11	
882	USA	152880	2	USA	*	V41	F7	S11	
812	USA	124488	2	USA	*	V44	F7	S11	

From: Hawkins, Fred (F.W.)
Sent: Tuesday, January 21, 2003 8:47 PM
To: Wruk, John (J.G.)
CC: Ryan, Emmett (E.C.); Patel, Mona (M.S.); West, Gregory (G.S.)
Subject: Teleflex Lube Migration issue meeting

John, I will be visiting Williams Controls 1/22 returning 1/23 by 12:00noon - so I plan on being back at VPO in time for 1:00 p.m. with Teleflex on Lube Migration issue in case you schedule the meeting for that time.

Please copy myself, Emmett Ryan, Mona Patel, and Greg West on the meeting notice as I will not be back in time to do so if the meeting is Thursday, 1/23. Thanks.

Regards,

Fred Hawkins

Chassis Site Manager

Supplier Technical Assistance

Phone: 313-38-05740; fhawkin2@ford.com

Text Page: 313-786-1437; Fax: 313-390-0783; VPO 1E401

"The information contained herein is FORD PROPRIETARY information and may include FORD CONFIDENTIAL information as defined in Ford's Global Information Standard II. Reproduction of this document, disclosure of the information, and use for any purpose other than the conduct of business with Ford is expressly prohibited"

From: Burrows, Jim (J.A.)
Sent: Thursday, October 17, 2002 4:56 PM
To: West, Gregory (G.S.); Lipoesky, Lawrence (L.J.); Kronenberg, Audrey (A.R.)
Cc: Slachta, Joseph (J.F.); Whuk, John (J.G.)
Subject: Teleflex P131 ETC pedal - Potential field action

Please be sure to invite us to the next CCRG technical review meeting. We need to understand the issues from the beginning.

I don't think the new meeting got on my calendar. I need to transfer to Joe or John since I'm moving to my new assignment.

Jim Burrows

Buyer - Cables, Pedals, & Parking Brakes
Global Chassis Commodity Management
jburrow3@ford.com
Phone: (313) 337-2505; Fax: (313) 323-2317

From: Burrows, Jim (J.A.)
Sent: Thursday, October 17, 2002 2:53 PM
To: Kevin McMahon (E-mail); Donna Polzin (E-mail); Mike Carr (E-mail)
Cc: Wnuk, John (J.G.); Slachta, Joseph (J.F.); Sheffield, Drew (D.L.)
Subject: NED1-E-11400245-004 is approved

Orest said that he wanted a PO. We have received authorization direct from the program.

Program management has spoken with John Major the launch supervisor at KTP. This is authorized. Teleflex is to ship the fixed pedals using a deactivated adjustable pedal (volumes previously supplied) through the end of November. This concern increases the releases for the adjustable pedal.

Does this do it from your end? Please contact Joe Slachta if you need anything further.

Jim Burrows

Buyer - Cables, Pedals, & Parking Brakes
Global Chassis Commodity Management
jburrow3@ford.com
Phone: (313) 337-2505; Fax: (313) 323-2317

From: Wnuk, John (J.G.)
Sent: Monday, October 14, 2002 4:08 PM
To: Burrows, Jim (J.A.)
Subject: RE: What's the concern number. Williams and Teleflex P131

C11400245-004. x29169.

John Wnuk
Buyer - Cables, Pedals, & Parking Brakes
Global Chassis Commodity Management
Phone: (313) 322-8189 Fax: (313) 323-0221
EMAIL: jwnuk@ford.com
Office: QMP 111-3

-----Original Message-----

From: Burrows, Jim (J.A.)
Sent: Monday, October 14, 2002 4:06 PM
To: Wnuk, John (J.G.)
Subject: What's the concern number. Williams and Teleflex P131

I was going to ask Marcella to help us with the concern approval. What's the number? What's your phone number? Profs is already updated.

Jim Burrows

Buyer - Cables, Pedals, & Parking Brakes
Global Chassis Commodity Management
jburrow3@ford.com
Phone: (313) 337-2505; Fax: (313) 323-2317

AP60

T
E
L
E
T
E
R

FD-302 (Rev. 11-29-60)

~~SECRET~~

PERS-044-A 0003

ISSUES

Number	Characteristic	Subcomponent feature inputs	
1	Accelerator Puck to Extension Plate	weld	
2	Accelerator Rod Tube to Arm Weld Strength	weld	
3	Accelerator Pedal Pad Pin Presence	n/a	
4	Accelerator Nose Cap Presence	n/a	
5	Accelerator Roll Pin Presence	n/a	
6	Accelerator Pedal Permanent Set	weld	
7	Accelerator Pedal Free Swing	n/a	
8	Accelerator Lateral Deflection (Pedal Lash)	Bronched Tang Width	
		Rod Slot Width	
		Bronched Hub Diameter	
		Rod Diameter	
		Bushing Thickness	
9	Acce Pedal Pad Profile	TP of Acce Weldment Pad Mig Holes	
		Acce Pedal Pad Profile to Mig Holes	
		Acce Pivot Holes Location	
10	Acce Pedal Lateral Position	Weldment Profile of Pedal Mig Surfaces	
		Pedal Pad Side profile	
11	Accelerator Guide Rod Joint Deflection	supplier	
12	Accelerator Guide Rod Joint Strength	supplier	
13	Accelerator Guide Rod Joint Torque Deflection	supplier	
14	Accelerator Guide Rod Joint Torque	supplier	
15	Accelerator Throttle Cable Hole Size	supplier	
16	ETC Sensor Output v. Pedal Rotation		
17	ETC Pedal Force v. Rotation	ETC Spring Forces	

1) Acc. Pedal Brake ...

Present design will not survive drop test. KTP will not be able to assure that a damaged pedal will not end up in a vehicle. Even if the process dictates that a pedal is scrapped when it is dropped by an operator there is no way to ensure realistically that the pedal will not be decked anyway. If this pedal can be damaged in the decking process how can we be sure that it will not be damaged during material handling.

Tests already show a high rate of failure when dropped and FEMA indicate unanticipated acceleration for a potential Failure Mode. VO can not waive drop test.

2 - 7) are design issues

8) IP decking tool catching on shift cable. I will follow up with Steve Buss to find out the status of this issue.

Richard Stanton

P131 U137 Int. & ext. trim VO Final Assy.

Phone: 313-845-4791 building: VOGO

Fax: 313-845-3243 cube: f3015

Text pager: 313-813-6894

e-mail: rstanto5@ford.com

FOR SERVICE

- PEDAL ASSY - w/o MOTOR.
- MOTOR - WITH CABLES
- MOTOR WITH SENSOR AND CABLES
- CABLES
- SENSOR

Lisa



Division Assessment

2002
P131 U137

MP&L- Change Control (continued)

8 CRs have aged over 4+ weeks:

- get Dan Randolph

Subsystem

- Chassis
- Chassis
- Chassis
- Chassis
- Chassis
- Chassis
- Chassis
- Powertrain

*Get clutch
APG
Bill Kelly*

Comments

Hanger bracket loose, added invest.

Fire blew out at APG.

Revise sway bar installation.

Fuel Bundle interferes with air suspension

~~Adjustable pedal; accel pedal mt. w/carpet~~

~~Adjustable pedal; accel pedal issue~~

~~Adjustable pedal; accel pedal~~

Noise coming from clutch

Expected Closure

12/5/00E

? E

12/5/00E

? E

12/7/00E

12/7/00E

12/7/00E

? E

Plan to Review w/ Scott, need closure date

Cory



The World Leader in Synthetic Lubricants

Monday, August 06, 2001

Jack Mango
Teleflex Automotive Group
3500 Springburn Commons Dr.
Louisville, KY 40241

Dear Jack:

As we had discussed on Friday, I have run an FT-IR on the lubricant sample you had provided to attempt to identify the material. The analysis indicates that this sample is closest to the original lubricant used in the adjustable pedal assemblies, the Dow Corning Molykote MI-60, rather than the current lubricant, Nye Rheolube 365FT. In particular, the FT-IR scan shows that the peak around 2950 cm^{-1} is closest in intensity to that of the Molykote, and the peak around 1700 cm^{-1} is present in the Molykote sample and the sample from you, but not in the 365F, the base grease for 365FT. I have enclosed those graphs for your review.

Please feel free to contact me if you have any further questions. You may also contact Rick Trecepelli, Regional Engineering Manager, in our Troy, MI office at 248-597-0077.

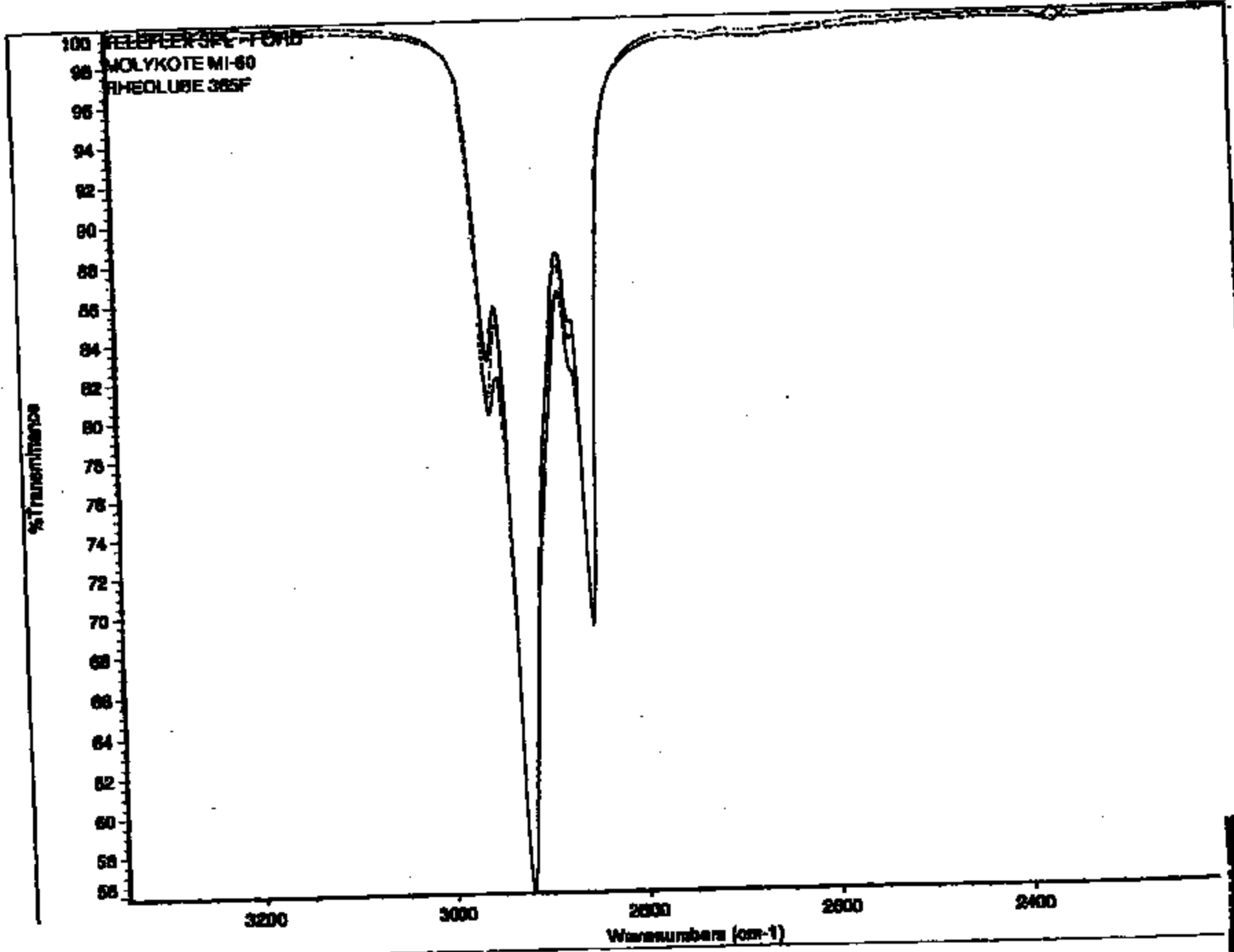
Sincerely,

Tracy E. Montour
Applications Engineer

Cc: Ben Franklin, Teleflex Kendallville

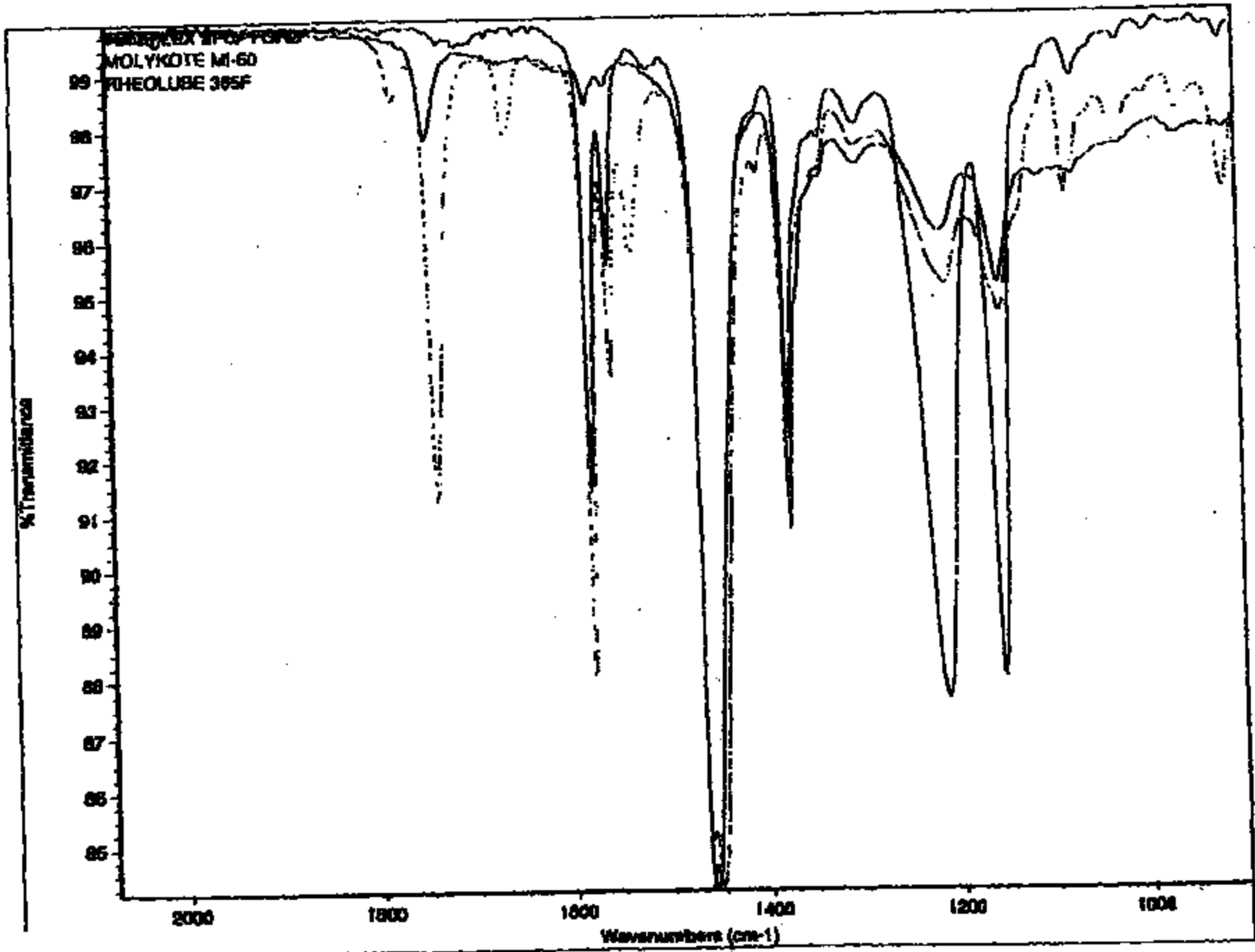


01-07-01 01:10pm From-TELEPLEX PEDALS DIV 210401000 T-770 P.08/04 F-000



PE83-844-A 3361

2150491963 PAGE. 03 AUG 07 2001 14:25



(INCOMING STOLK)

2034 2950-FC 72 PCS GOOD

2039 9F836-DC 19 PCS GOOD

2034 2950-FC 49 PCS GOOD

2039 9726-CE 43 PCS GOOD

2034 9F836-DC 36 PCS GOOD

2034 -9G662-AB 5x18x13=103

2034 9G662-BC

Adjustable Pedal
Part Numbers

Quantity

P131 TOTAL U137

Accel. 2C34-9726-CE (Gas) 43

2C34-9F836-DC (Diesel) 55

Brake 2C34-2450-EC (Gas) 44

2C34-2450-FC (Diesel) 72

Motors 2C34-9G662-BC (Memory)

2C34-9G662-AB (Non-memory) 103

1-517-403-3151 X 318 MARY BRITTON

ROLF - X3856

SBRASSI@ford.com

* SYSTEM FIX PROBLEMS

✓ 8022

✓ 7960

✓ 7991 — STOPPER ISSUE — FIXED

✓ 8016

✓ 7956

✓ 7999

✓ 5329

✓ 7929

NONE OF ABOVE VEHICLES WERE KINKED @ BRAKE
DRIVE CABLE LOCATION. CABLES WILL MOVE IF @ END
OF STOP THE SWITCH IS DEPRESSED IN WRONG DIRECTION.

West Park Center
126

341 Auto Club
P 48126

Need to measure Adj Rnd P/U
- measurements

- Go/No Go Wood slits
sp into carpet

6.8L 345

□□

*** REPAIR STD ***

PLANT/PROCESSOR CODE : AGO 453
NAME : RICHARD STANTON
PHONE : 3138454791

KEY PROCESS :
KEY ELEMENT : -
KEY TOOL : -
REQUEST LANG : E
STANDARD LANG :

REPEAT OPPOSITE SIDE: N
PSO/ADI :
LINE/SUB-ASSEMBLY : L
CER AUTHORITY : NB00 11175458000

HEADER CHANGE : ADD
DATE : 07/22/2001

EFFECTIVE DATE PLANT: AGO
IN DATE :
IN POINT : 06/25/1999
OUT DATE :
OUT POINT :

ISSUE DATE ORIGINAL:
LATEST :

ELEMENT CHANGE : Y
PART CHANGE : Y
TOOL CHANGE : Y
USAGE CHANGE : Y

REPLACES PROCESS :
REPLACED BY PROCESS :
ILLUSTRATION DATE : ** N/A **
NO. OF ILLUSTRATIONS: 00

----- CPXCS ----- VEHICLES ----- PLANTS -----
110200 TF7 1P1 K7P MEX

REVISIONS

REVISION-DATE	REVISION-ID	REVISION-CER-NUMBER	REVISION DESCRIPTION
07/22/2001	453	NB00 11175458000	NEW REPAIR PROCEDURE FOR ADJUSTABLE PEDALS
07/22/2001	453	NB00 11175458000	COPY -TF7-BC0037-00000-AG0-1

PROCESS-44-A 3036

*****MANDATORY COMPLIANCE*****MANDATORY COMPLIANCE*****MANDATORY COMPLIANCE*****MANDATORY COMPLIANCE***
PROCESS TITLE ----- * MAND * FAN PROCESS ECVL/SFX PLY CPY -- STUDY -- ALT C/W
REPAIR STANDARD FOR REPLACING ADJUSTABLE ACCELERATOR PEDAL. * * TF7 RC0037 000 00 AGD 1
***** NON-RELEASED PROCESS ***** NON-RELEASED PROCESS ***** NON-RELEASED PROCESS ***** NON-RELEASED PROCESS ***
PAGE 001 CONT ON 002

ELEMENTS

ELEMENT	TEXT	PART REFS:	ADD
ELEMENT: 000	WHEN REPLACING ADJUSTABLE ACCELERATOR PEDAL CARE MUST BE TAKEN TO ENSURE PROPER STEP OVER THROUGHOUT TRAVEL. PROPER STEPOVER IS DESIGNED WITH BOTH PEDALS AT FULL REARWARD POSITION SO CARE MUST BE TAKEN TO VERIFY THAT BOTH PEDALS COME TO FULL REARWARD POSITION SIMULTANEOUSLY.	R01 R02 R03 R04 R05	07/22/2001
	CONTROL USAGE=> F250HD/350/450/550		07/22/2001
ELEMENT: 010	DISCONNECT ACCELERATOR PEDAL DRIVE CABLE.	E01	07/22/2001
	CONTROL USAGE=> F250HD/350/450/550		07/22/2001
ELEMENT: 020	CYCLE BRAKE PEDAL TO FULL REARWARD POSITION BY DEPRESSING ROCKER SWITCH ON INSTRUMENT PANEL.	E01 E02	07/22/2001
	CONTROL USAGE=> F250HD/350/450/550		07/22/2001
ELEMENT: 030 *MANDATORY*	VERIFY THAT BRAKE PEDAL IS IN FULL REARWARD POSITION.	E01	07/22/2001
	CONTROL USAGE=> F250HD/350/450/550		07/22/2001
ELEMENT: 040	REMOVE ADJUSTABLE ACCELERATOR PEDAL.	E01	07/22/2001
	CONTROL USAGE=> F250HD/350/450/550		07/22/2001
ELEMENT: 050	INSTALL NEW ACCELERATOR PEDAL FROM STOCK.	E01	07/22/2001
	CONTROL USAGE=> F250HD/350/450/550		07/22/2001
ELEMENT: 060 *MANDATORY*	VERIFY NEW ACCELERATOR PEDAL IS IN FULL REARWARD POSITION.	E01	07/22/2001
	CONTROL USAGE=> F250HD/350/450/550		07/22/2001
ELEMENT: 062	GRASP FREE END OF ACCELERATOR DRIVE CABLE.	E01	07/22/2001

*****MANDATORY COMPLIANCE*****MANDATORY COMPLIANCE*****MANDATORY COMPLIANCE*****MANDATORY COMPLIANCE*****
 PROCESS TITLE ----- * MAND * FAM PROCESS ELVL/SFX PLT CPY -- STUDY -- ALT C/M
 REPAIR STANDARD FOR REPLACING ADJUSTABLE ACCELERATOR PEDAL. * * TF7 RCD038 000 00 AGO 1
 ***** NON-RELEASED PROCESS ***** NON-RELEASED PROCESS ***** NON-RELEASED PROCESS ***** NON-RELEASED PROCESS *****
 ** PAGE 002 CONT ON 003

PC93-044-R 2857

ELEMENTS

ELEMENT: 062

CONTROL USAGE=> F250HD/350/450/550

PART REFS:

ADD 07/22/2001

ADD 07/22/2001

ELEMENT: 070 *MANDATORY*

TEXT=> ALIGN-AND-SEAT ACCELERATOR PEDAL DRIVE CABLE TO ACCELERATOR PEDAL.

PART REFS:

ADD 07/22/2001

E01
E02

CONTROL USAGE=> F250HD/350/450/550

ADD 07/22/2001

ELEMENT: 080

TEXT=> CYCLE PEDALS FORWARD TO STOP.

NOTE: ADJUSTABLE BRAKE AND ACCELERATOR PEDALS MUST BE INSTALLED IN THEIR FULL REARWARD POSITION TO ENSURE PROPER DESIGN STEPOVER.

PART REFS:

ADD 07/22/2001

E01
R01
R02
R03

TOOLS=> CTL: DESC: POWER STEERING FILL EQUIPMENT EFP-101
TOOL NUMBER: COMM

TYP: C
QTY: 001

ADD 07/22/2001

CONTROL USAGE=> F250HD/350/450/550

ADD 07/22/2001

*****MANDATORY COMPLIANCE*****MANDATORY COMPLIANCE*****MANDATORY COMPLIANCE*****MANDATORY COMPLIANCE***
REPAIR STANDARD FOR REPLACING ADJUSTABLE ACCELERATOR PEDAL. * MAND * PAM PROCESS ELVL/SFX PLY CPV -- STUDY -- ALT C/M
***** NON-RELEASED PROCESS ***** NON-RELEASED PROCESS ***** NON-RELEASED PROCESS ***** NON-RELEASED PROCESS ***
***** TF7 RC0038 D00 00 AGO 1 *****
**
PAGE 003 CONT ON END

REQUESTOR INFORMATION:

USER PLANT-PROGR PROCESSOR NAME
AA74833 AGO 933 RICHARD STANTON

REQ DATE
07/23/2001

REQ TIME
08:00:35

*Repair Standard. Replace Adjustable Pedal Motor
RC 39
TF7*

*** REPAIR STD ***

PLANT/PROCESSOR CODE : AGO 833
 NAME : RICHARD STANTON
 PHONE : 3138454791

KEY PROCESS : *
 KEY ELEMENT : -
 KEY TOOL : -
 REQUEST LANG : E
 STANDARD LANG : M

REPEAT OPPOSITE SIDE: N
 P80/ADJ :
 LINE/SUB-ASSEMBLY : L
 CER AUTHORITY : MB00 11175458000

HEADER CHANGE : ADD
 DATE : 07/22/2001

EFFECTIVE DATE PLANT: AGO
 IN DATE :
 IN POINT : 06/25/1999
 OUT DATE :
 OUT POINT :

ISSUE DATE ORIGINAL:
 LATEST :

ELEMENT CHANGE : Y
 PART CHANGE : Y
 TOOL CHANGE : Y
 USAGE CHANGE : Y

REPLACES PROCESS :
 REPLACED BY PROCESS :
 ILLUSTRATION DATE : ** R/A **
 NO. OF ILLUSTRATIONS: 00

----- CPSCS ----- VEHICLES ----- PLANTS -----
 110200 TF7 IPI KTP MEX

REVISIONS

REVISION-DATE	REVISION-ID	REVISION-CER-NUMBER	REVISION DESCRIPTION
07/22/2001	S33	MB00 11175458000	ELEMENTS RESEQUENCED
07/22/2001	S33	MB00 11175458000	ELEMENTS RESEQUENCED
07/22/2001	S33	MB00 11175458000	ELEMENTS RESEQUENCED
07/22/2001	S33	MB00 11175458000	NEW REPAIR PROCEEDURE FOR ADJ. PEDAL MOTORS
07/22/2001	S33	MB00 11175458000	COPY -TF7-RC0039-D00 00 AGO 1

*****MANDATORY COMPLIANCE*****MANDATORY COMPLIANCE*****MANDATORY COMPLIANCE*****MANDATORY COMPLIANCE***
 ----- PROCESS TITLE ----- * MAND * FAM PROCESS ELVL/SFX PLT CPY -- STUDY -- ALT C/M
 REPAIR STANDARD FOR REPLACING ADJUSTABLE PEDAL MOTOR. * * TF7 RC0039 D00 00 AGO 1
 ***** NON-RELEASED PROCESS ***** NON-RELEASED PROCESS ***** NON-RELEASED PROCESS ***** NON-RELEASED PROCESS ***
 ** PAGE 001 CONT ON 002

ELEMENTS

ELEMENT: 000			
TEXT====>	WHEN REPLACING ADJUSTABLE PEDAL DRIVE MOTOR CARE MUST BE TAKEN TO ENSURE PROPER STEP OVER THROUGHOUT TRAVEL. PROPER STEPOVER IS DESIGNED AT FULL REARWARD POSITION SO CARE MUST BE TAKEN TO VERIFY THAT BOTH PEDALS COME TO FULL REARWARD POSITION SIMULTANEOUSLY.	PART REFS:	ADD 07/22/2001
		R01	
		R02	
		R03	
		R04	
		R05	
CONTROL USAGE==>	F250HD/350/450/550		ADD 07/22/2001
ELEMENT: 010			
TEXT====>	DISCONNECT DRIVE MOTOR ELECTRICAL CONNECTOR.	PART REFS:	ADD 07/22/2001
		E01	
CONTROL USAGE==>	F250HD/350/450/550		ADD 07/22/2001
ELEMENT: 020			
TEXT====>	DISCONNECT ACCELERATOR PEDAL DRIVE CABLE.	PART REFS:	ADD 07/22/2001
		E01	
CONTROL USAGE==>	F250HD/350/450/550		ADD 07/22/2001
ELEMENT: 030			
TEXT====>	DISCONNECT BRAKE PEDAL DRIVE CABLE.	PART REFS:	ADD 07/22/2001
		E01	
CONTROL USAGE==>	F250HD/350/450/550		ADD 07/22/2001
ELEMENT: 040			
TEXT====>	REMOVE (2) SCREWS FROM MOTOR MOUNTING BRACKET.	PART REFS:	ADD 07/22/2001
		E01	
CONTROL USAGE==>	F250HD/350/450/550		ADD 07/22/2001
ELEMENT: 050			
TEXT====>	REMOVE PEDAL DRIVE MOTOR.	PART REFS:	ADD 07/22/2001
		E01	
CONTROL USAGE==>	F250HD/350/450/550		ADD 07/22/2001
ELEMENT: 060			
TEXT====>	ALIGN-AND-SECURE (2) MOTOR SCREWS OF NEW MOTOR. NOTE: TORQUE CONTROL: 4.1 +/- 0.7 MM.	PART REFS:	ADD 07/22/2001
		E01	
		R01	
CONTROL USAGE==>	F250HD/350/450/550		ADD 07/22/2001
ELEMENT: 070			
TEXT====>	GRASP FREE END OF ACCELERATOR DRIVE CABLE.	PART REFS:	ADD 07/22/2001
		E01	

*****MANDATORY COMPLIANCE*****MANDATORY COMPLIANCE*****MANDATORY COMPLIANCE*****MANDATORY COMPLIANCE*****
 ----- PROCESS TITLE ----- * HAND * FAN PROCESS ELVL/SFX PLY CPT -- STUDY -- ALT C/M
 REPAIR STANDARD FOR REPLACING ADJUSTABLE PEDAL MOTOR. * * TF7 R0039 000 DO ADD 1
 ***** NON-RELEASED PROCESS ***** NON-RELEASED PROCESS ***** NON-RELEASED PROCESS ***** NON-RELEASED PROCESS *****
 PAGE 002 CONT ON 003

ELEMENTS

ELEMENT:	TEXT:	CONTROL USAGE:	PART REFS:	ADD
070		F250HD/350/450/550		07/22/2001
080	*MANDATORY* ALIGN-AND-SEAT ACCELERATOR PEDAL DRIVE CABLE TO ACCELERATOR PEDAL.	F250HD/350/450/550	E01 E02	07/22/2001
090	SECURE 14401 CONNECTOR TO MOTOR TAKE OUT.	F250HD/350/450/550	E01	07/22/2001
100	*MANDATORY* CYCLE ACCELERATOR PEDAL TO FULL REARWARD POSITION USING ROCKER SWITCH LOCATED ON INSTRUMENT PANEL.	F250HD/350/450/550	E01 E02	07/22/2001
110	*MANDATORY* VERIFY THAT ACCELERATOR PEDAL IS IN FULL REARWARD POSITION.	F250HD/350/450/550	E01	07/22/2001
120	REMOVE ACCELERATOR PEDAL DRIVE CABLE.	F250HD/350/450/550	E01	07/22/2001
130	GRASP FREE END OF BRAKE PEDAL DRIVE CABLE.	F250HD/350/450/550	E01	07/22/2001
132	*MANDATORY* ROUTE BRAKE PEDAL DRIVE CABLE AROUND 14401 THAT RUNS THROUGH THE DASH PANEL.	F250HD/350/450/550	E01 E02	07/22/2001

*****MANDATORY COMPLIANCE*****MANDATORY COMPLIANCE*****MANDATORY COMPLIANCE*****MANDATORY COMPLIANCE*****
 ----- PROCESS TITLE ----- * MAND * FAB PROCESS ELVL/SFX PLT CPY -- STUDY -- ALT C/M
 REPAIR STANDARD FOR REPLACING ADJUSTABLE PEDAL MOTOR. * * T17 R00839 000 00 AGO 1
 ***** NON-RELEASED PROCESS ***** NON-RELEASED PROCESS ***** NON-RELEASED PROCESS ***** NON-RELEASED PROCESS *****
 ** PAGE 003 CONT ON 004

PE83-944-A 3842

ELEMENTS

ELEMENT: 132 *MANDATORY* PART REFS: ADD 07/22/2001
 CONTROL USAGE=> F250HD/350/450/550 ADD 07/22/2001

ELEMENT: 134 *MANDATORY* PART REFS: ADD 07/22/2001
 TEXT=> ALIGN-AND-SEAT BRAKE PEDAL DRIVE CABLE TO BRAKE PEDAL. E01
 CONTROL USAGE=> F250HD/350/450/550 ADD 07/22/2001

ELEMENT: 136 PART REFS: ADD 07/22/2001
 TEXT=> CYCLE BRAKE PEDAL TO FULL REARWARD POSITION. E01
 CONTROL USAGE=> F250HD/350/450/550 ADD 07/22/2001

ELEMENT: 140 *MANDATORY* PART REFS: ADD 07/22/2001
 TEXT=> VERIFY BRAKE PEDAL IS IN FULL REARWARD POSITION. E01
 CONTROL USAGE=> F250HD/350/450/550 ADD 07/22/2001

ELEMENT: 150 PART REFS: ADD 07/22/2001
 TEXT=> GRASP FREE END OF ACCELERATOR DRIVE CABLE. E01
 CONTROL USAGE=> F250HD/350/450/550 ADD 07/22/2001

ELEMENT: 160 *MANDATORY* PART REFS: ADD 07/22/2001
 TEXT=> ALIGN-AND-SEAT ACCELERATOR PEDAL DRIVE CABLE TO ACCELERATOR E01
 PEDAL. E02
 CONTROL USAGE=> F250HD/350/450/550 ADD 07/22/2001

ELEMENT: 170 PART REFS: ADD 07/22/2001
 TEXT=> CYCLE PEDALS SEVERAL TIMES TO VERIFY THAT BOTH MOVE TOGETHER E01
 TO BOTH ENDS OF TRAVEL. E02
 NOTE: ADJUSTABLE BRAKE AND ACCELERATOR PEDALS ARE DESIGNED E01
 WITH PROPER STEPOVER IN FULL REARWARD POSITION. E02

TOOLS=> CYL: DESC: POWER STEERING FILL EQUIPMENT EFP-101 TYP: C ADD 07/22/2001
 TOOL NUMBER: COMM QTY: 001

CONTROL USAGE=> F250HD/350/450/550 ADD 07/22/2001

*****MANDATORY COMPLIANCE*****MANDATORY COMPLIANCE*****MANDATORY COMPLIANCE*****MANDATORY COMPLIANCE**
 ----- PROCESS TITLE ----- * RAND * FAN PROCESS ELVL/SFX PLT CNY -- STUDY -- ALT C/N
 REPAIR STANDARD FOR REPLACING ADJUSTABLE PEDAL MOTOR. * * TY7 BC0039 000 00 ADD 1
 ***** NON-RELEASED PROCESS ***** NON-RELEASED PROCESS ***** NON-RELEASED PROCESS ***** NON-RELEASED PROCESS **
 ** PAGE 004 CONT ON END

REQUESTOR INFORMATION:

USER PLANT-PROCE PROCESSOR NAME
AA74633 AGO 633 RICHARD STANTON

REQ DATE REQ TIME
07/23/2001 07:59:36

Process — Adjustable Pedal Motor Install

CJ 4147

TF7

PLANT/PROCESSOR CODE : AGO 833
 NAME : RICHARD STANTON
 PHONE : 3158434791

REPEAT OPPOSITE SIDE: N
 PSO/AOI :
 LINE/SUB-ASSEMBLY : L
 CER AUTHORITY : NB00 11253835000

KEY PROCESS :
 KEY ELEMENT :
 KEY TOOL :
 REQUEST LANG : E
 STANDARD LANG : Y

EFFECTIVE DATE PLANT: AGO
 IN DATE : 07/16/2001
 IN POINT : S4P2CN TF7
 OUT DATE :
 OUT POINT :
 ISSUE DATE ORIGINAL: 06/20/2001
 LATEST : 07/21/2001

SENDER CHANGE : CHG
 DATE : 06/20/2001

ELEMENT CHANGE : Y
 PART CHANGE : N
 TOOL CHANGE : N
 USAGE CHANGE : N

REPLACES PROCESS : CJ4147 D0102 AGO ILLUSTRATION DATE : ** N/A **
 REPLACED BY PROCESS : NO. OF ILLUSTRATIONS: 00

----- CPSCS ----- VEHICLES ----- PLANTS -----
 060602 060600 080201 020201 TF7 KTP MEX

INSTALLATION MANUAL REFERENCES

IL-F81A-D60600-L01 IL-2C34-D60600-L01

REVISIONS

REVISION-DATE	REVISION-ID	REVISION-CER-NUMBER	REVISION DESCRIPTION
07/21/2001	833		REPLACES TF7CJ4147D0102AG0
07/21/2001	833	NB00 11253835000	MANUAL PAGE IL-2C34-060600-L01 ADDED.
07/21/2001	833	NB00 11253835000	ELEMENT 150 REVISED
07/21/2001	833	NB00 11253835000	ELEMENT 150 MAIN ITEM CHANGED FROM N TO Y
07/21/2001	833	NB00 11253835000	REVISED PROCESS TO ANSWER CONCERN
07/21/2001	833	NB00 11253835000	COPY -TF7-CJ4147-D0102-AG0-

*****MANDATORY COMPLIANCE*****MANDATORY COMPLIANCE*****MANDATORY COMPLIANCE*****MANDATORY COMPLIANCE*****

PROCESS TITLE : ADJUSTABLE PEDAL HOYDR TO BRAKE PEDAL ASSEMBLY * HAND * FAM PROCESS ELVL/SFX PLT CPY -- STUDY -- ALT C/W
 * * * TF7 CJ4147 D01 03 AGO

ELEMENTS

ELEMENT: 010
 TEXT=> READ TELETYPE FOR VEHICLE USAGE. PART REFS: VALIDATED / /
 E01
 CONTROL USAGE=> F250HD/350/450/550 ALL AUTOMATIC TRANSMISSIONS ADJUSTBLE ACCL/BRK FOOT PEDALS / /

ELEMENT: 020
 TEXT=> OBTAIN (1) ADJUSTABLE PEDAL MOTOR. PART REFS: A / /
 E01 STANDARD LANGUAGE: VALIDATED
 PARTS=> CTL: Y DESC: CA ACEL PDL TO MTRM REF: A STAT: P EFFECTIVE IN : 01/01/2001 / /
 PART NUMBER: 2C34 98662 AB TYPE: EFFECTIVE OUT: X84P02A TF7
 PARTS=> CTL: H DESC: CA ACEL PDL TO MTRM REF: A STAT: P EFFECTIVE IN : 01/01/2001 / /
 PART NUMBER: PW2C34 98662 AB TYPE: EFFECTIVE OUT: X84P02A TF7
 CONTROL USAGE=> F250HD/350/450/550 ALL AUTOMATIC TRANSMISSIONS ADJUSTBLE ACCL/BRK FOOT PEDALS / /

ELEMENT: 030
 TEXT=> ALIGN (2) SCREWS TO ADJUSTABLE BRAKE PEDAL MOTOR BRACKET PART REFS: / /
 NOTE: SCREWS ARE PIA TO THE MOTOR ASSY. E01 STANDARD LANGUAGE: VALIDATED
 R01
 CONTROL USAGE=> F250HD/350/450/550 ALL AUTOMATIC TRANSMISSIONS ADJUSTBLE ACCL/BRK FOOT PEDALS / /

ELEMENT: 040
 TEXT=> SECURE (2) SCREWS TO ADJUSTABLE BRAKE PEDAL MOTOR BRACKET PART REFS: / /
 E01 STANDARD LANGUAGE: VALIDATED
 TOOLS=> CTL: DESC: PIST BRIP NUTRUNNER AIR, TORQUE SHUT OFF TYP: P TORQ-MEAN-INSTAL: 4.1 MINIMUM / /
 TOOL NUMBER: AAPTC H 2T QTY: 001 TORQ-VAR-INSTAL: .7
 TOOLS=> CTL: DESC: SKT, 1/4SNDR, 6MM 6PT, 22.2MM OAL TYP: S / /
 TOOL NUMBER: 2806K10H12A22 QTY: 001
 CONTROL USAGE=> F250HD/350/450/550 ALL AUTOMATIC TRANSMISSIONS ADJUSTBLE ACCL/BRK FOOT PEDALS / /

ELEMENT: 050
 TEXT=> GRASP ADJUSTABLE ACCELERATOR DRIVE CABLE END PART REFS: / /
 NOTE: ADJUSTABLE ACCELERATOR PEDAL DRIVE CABLE IS THE E01 STANDARD LANGUAGE: VALIDATED
 SHORTER CABLE THAT IS AT INBOARD END OF INSTALLED MOTOR R01
 R02
 CONTROL USAGE=> F250HD/350/450/550 ALL AUTOMATIC TRANSMISSIONS ADJUSTBLE ACCL/BRK FOOT PEDALS / /

ELEMENT: 060 *MANDATORY*
 TEXT=> ALIGN-AND-SEAT ADJUSTABLE ACCELERATOR DRIVE CABLE INTO PART REFS: / /
 PEDAL CABLE INLET. E01 STANDARD LANGUAGE: VALIDATED
 ENSURE THAT CABLE END SNAPS INTO INLET. E02
 R01

*****MANDATORY COMPLIANCE*****MANDATORY COMPLIANCE*****MANDATORY COMPLIANCE*****MANDATORY COMPLIANCE***
 ADJUSTABLE PEDAL MOTOR TO BRAKE PEDAL ASSEMBLY * HAND * FAN PROCESS ELVL/SFX PLT CPT -- STUDY -- ALT C/N
 * * TF7 CJ6167 001 03 ADD

1203-044-9 3049

ELEMENTS

NOTE: ACCELERATOR CABLE MUST BE SECURELY LOCKED INTO CONNECTOR ON BRAKE AND ACCELERATOR PEDALS. R02
R03

CONTROL USAGE=> F250HD/350/450/550 ALL AUTOMATIC TRANSMISSIONS ADJUSTBLE ACCL/BRK FOOT PEDALS / /

ELEMENT: 070
TEXT=> GRASP ADJUSTABLE BRAKE PEDAL DRIVE CABLE END PART REFS: / /
NOTE: ADJUSTABLE BRAKE PEDAL DRIVE CABLE IS THE E01 STANDARD LANGUAGE: VALIDATED
LONGER CABLE THAT IS AT OUTBOARD END OF INSTALLED MOTOR R01
R02

CONTROL USAGE=> F250HD/350/450/550 ALL AUTOMATIC TRANSMISSIONS ADJUSTBLE ACCL/BRK FOOT PEDALS / /

ELEMENT: 080 *MANDATORY*
TEXT=> ALIGN-AND-BEAT ADJUSTABLE BRAKE PEDAL DRIVE CABLE INTO PART REFS: / /
PEDAL CABLE INLET. E01 STANDARD LANGUAGE: VALIDATED
NOTE: ENSURE THAT CABLE END SNAPS INTO INLET. E02
NOTE: BRAKE CABLE MUST BE SECURELY LOCKED INTO CONNECTORS R01
ON BRAKE AND ACCELERATOR PEDALS. R02
R03

CONTROL USAGE=> F250HD/350/450/550 ALL AUTOMATIC TRANSMISSIONS ADJUSTBLE ACCL/BRK FOOT PEDALS / /

ELEMENT: 090
TEXT=> OBTAIN 12 VOLT POWER SUPPLY. PART REFS: / /
E01 STANDARD LANGUAGE: VALIDATED

CONTROL USAGE=> F250HD/350/450/550 ALL AUTOMATIC TRANSMISSIONS ADJUSTBLE ACCL/BRK FOOT PEDALS / /

ELEMENT: 100
TEXT=> CONNECT 12 VOLT POWER TO MOTOR LEAD. PART REFS: / /
E01 STANDARD LANGUAGE: VALIDATED

CONTROL USAGE=> F250HD/350/450/550 ALL AUTOMATIC TRANSMISSIONS ADJUSTBLE ACCL/BRK FOOT PEDALS / /

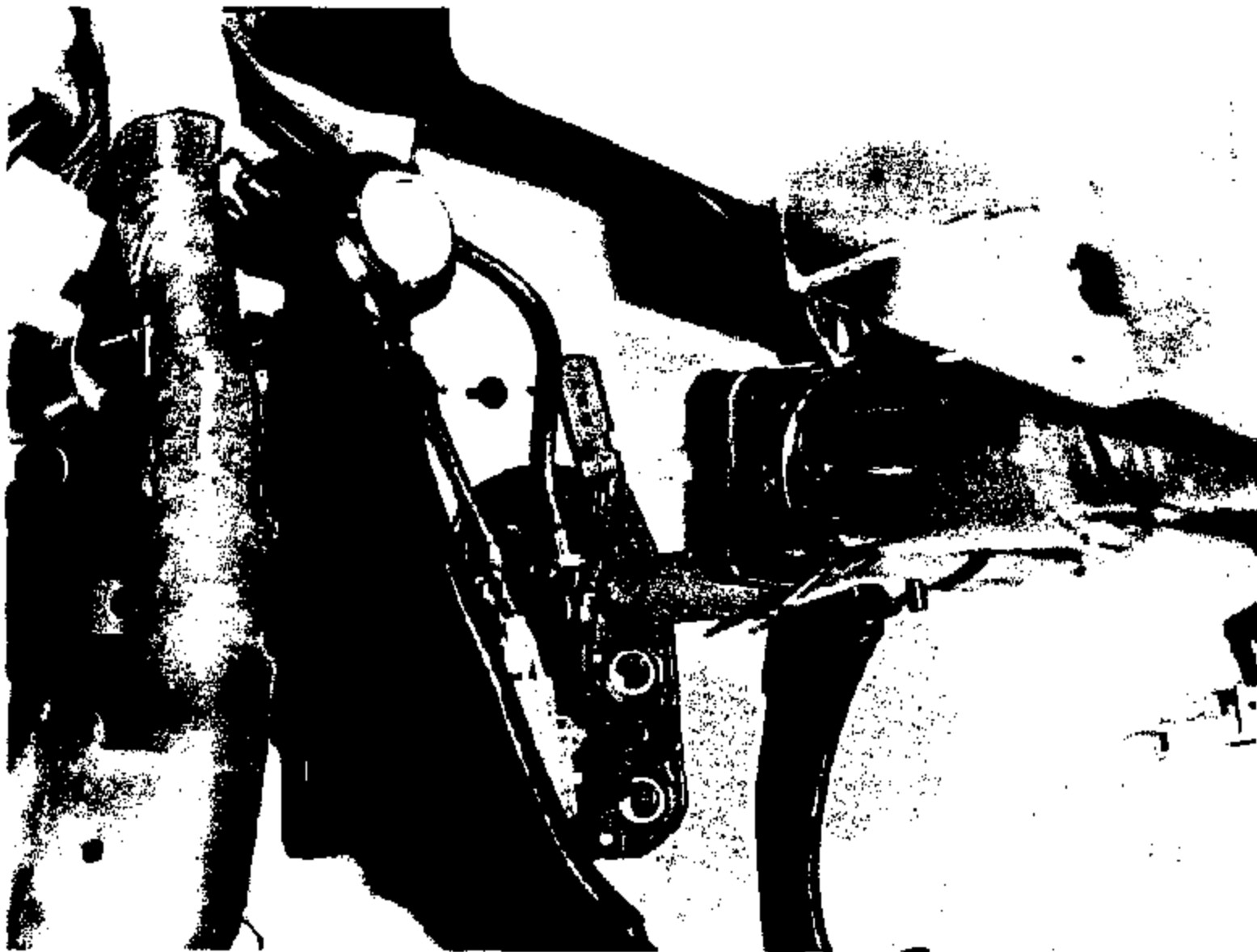
ELEMENT: 110 *MANDATORY*
TEXT=> CYCLE PEDALS FOR APPROXIMATELY (13) SECONDS. PART REFS: / /
VERIFY THAT BOTH ACCELERATOR AND BRAKE PEDALS MOVE FORWARD E01 STANDARD LANGUAGE: VALIDATED
TOGETHER AND STOP AT FIXED PEDAL POSITION. R01
R02

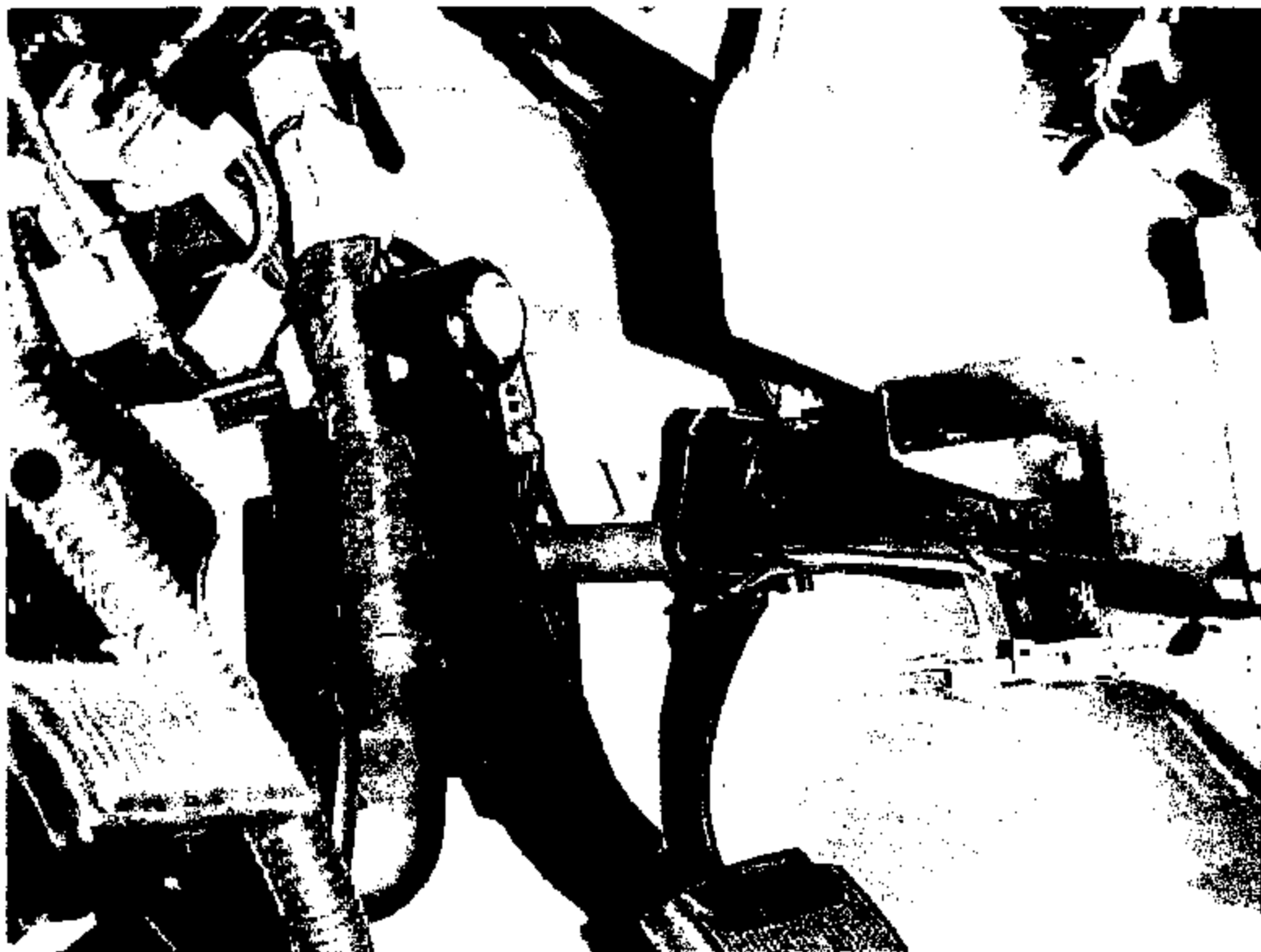
CONTROL USAGE=> F250HD/350/450/550 ALL AUTOMATIC TRANSMISSIONS ADJUSTBLE ACCL/BRK FOOT PEDALS / /

ELEMENT: 120
TEXT=> DISCONNECT 12 VOLT POWER FROM MOTOR LEAD. PART REFS: / /
E01 STANDARD LANGUAGE: VALIDATED

*****MANDATORY COMPLIANCE*****MANDATORY COMPLIANCE*****MANDATORY COMPLIANCE*****MANDATORY COMPLIANCE***
PROCESS TITLE ----- *MAND * FAN PROCESS ELVL/SFX PLY CPY -- STUDY -- ALT C/W
ADJUSTABLE PEDAL MOTOR TO BRAKE PEDAL ASSEMBLY * * TF7 C4147 001 03 Add
* *

FE03-044-R 3047







Complexity Matrix

Petrauskas, Lisa (L.E.)

From: Buss, Stephen (S.D.)
Sent: Saturday, October 21, 2000 9:18 PM
To: Petrauskas, Lisa (L.E.); Beuckelaers, Phillip (P.R.); Reed, Bill (B.P.); Patel, Tej (J.); Patel, Bharat (B.C.); Ickes, Bill (B.K.); McCreary, Buster (B.C.); Wagner, Jesse (J.E.); Roberts, George (G.); Coates, Sharon (S.A.); Stanton, Richard (R.A.); Shaw, Richard (R.F.); Stahley, Steve (S.T.); Wendel, Rod (R.H.); Pettus, Terence (T.E.); Charland, Alex (A.J.); Walsh, Thomas (T.J.); Rank, John (J.A.); Kobus, Jack (J.M.)
Subject: Adjustable Pedal Trials

On Tuesday and Wednesday 10/17-10/18 an adjustable pedal trial was conducted at KTP. The trial consisted of four vehicles, two P131s and two Excursions. Each vehicle was built on line and sent through the plant system.

Several issues were observed and captured, here is a brief summary of what issues were found: (note P=Process and D=design)

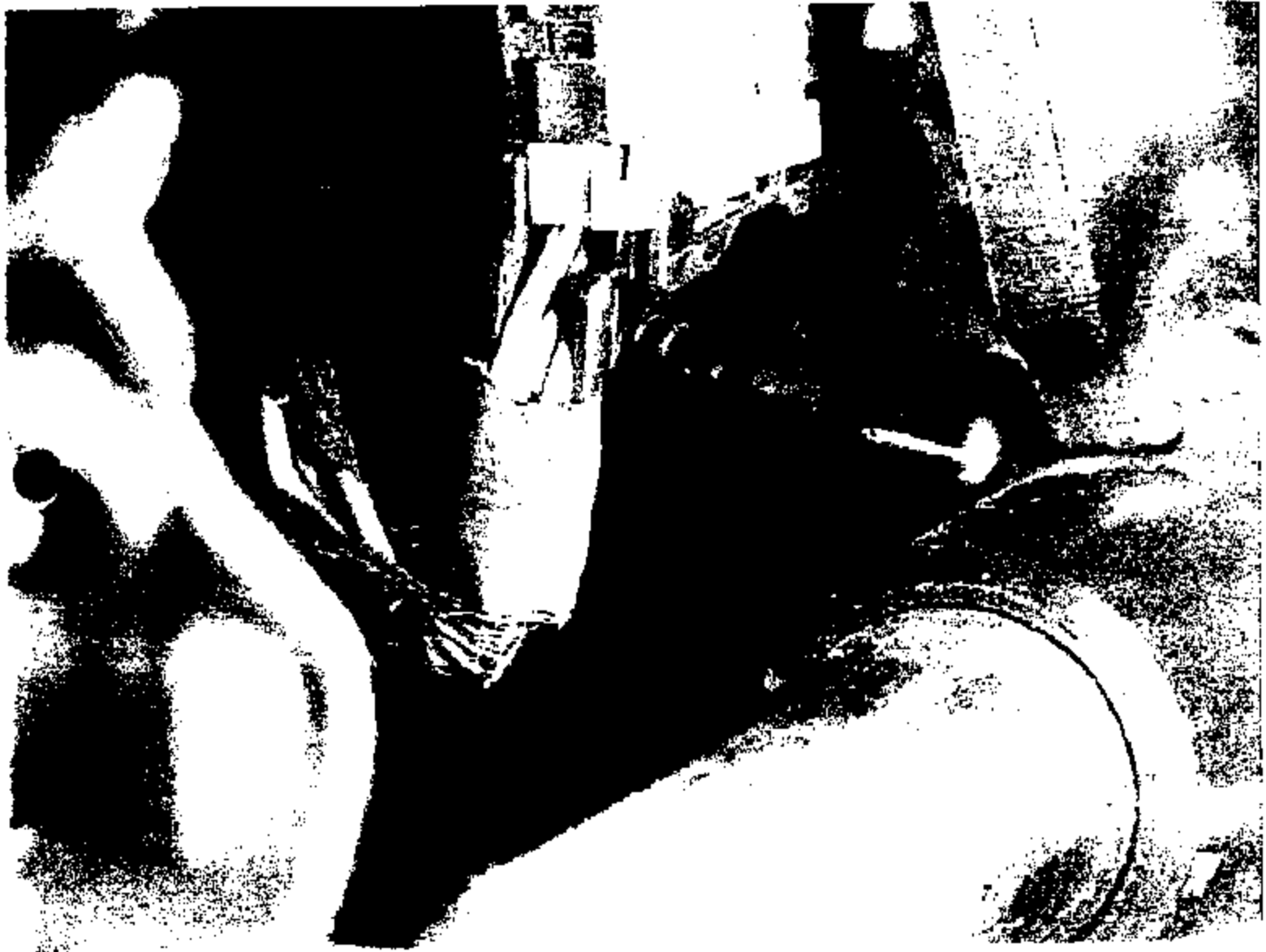
1. (P/D) Difficult to hand start accelerator screw. Team felt this could be solved with the use of a yankee. An alternative solution would be to have the top inboard bolt come pia to the assembly.
2. (D) CR C11157559 Accelerator pedal broke when dropped from a height of under 3 feet. The outboard most attachment was snapped when the accelerator was dropped. This would be the source of production scrap in the plant.
3. (P) The new end affector detail caught the shift cable upon agress from the vehicle and hit accelerator pedal. A trial on current IP decking process to determine an alternative stow position for the shift cable will be performed.
4. (P) Shooting IP pencil brace becomes more difficult with adjustable pedals. The team felt that this issue could be resolved with the proper extension on the socket.
5. (D) CR C11157564 Foot warmer difficult to install on diesel units. Foot warmer broken during assembly.
6. (D) CR C11157562 Assembly access to connect 2-pin motor takes out difficult. AFL reviewing alternative routing.
7. (D) CR C11157567 Accelerator pedal on diesel units bottoms out on dash insulator, not reaching its full range of travel.
8. (D) CR C11157558 Boo lp wire is in hard contact with adjustable brake pedal shaft.

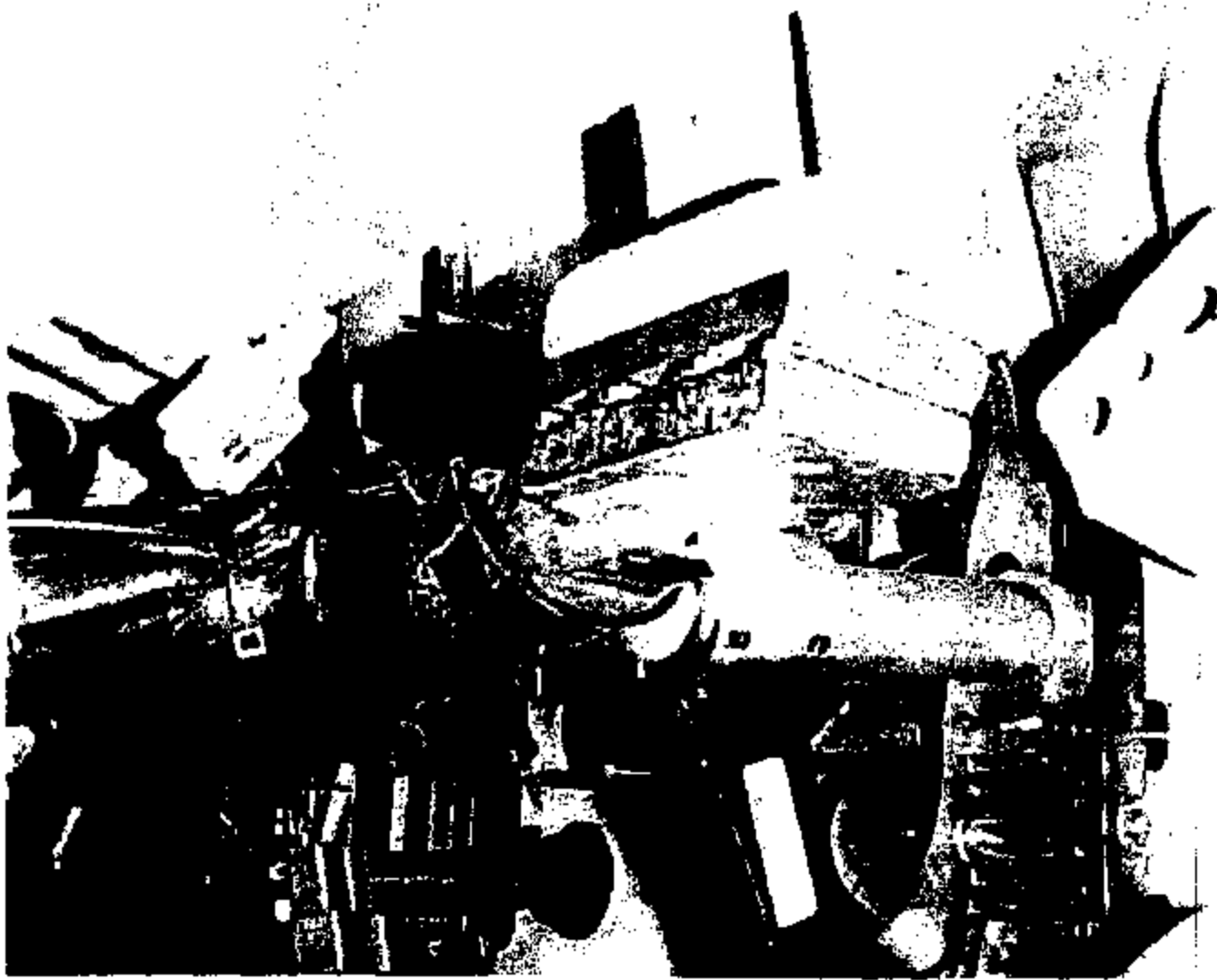
4P for the adjustable pedal program was scheduled for 12/12. In light of the issues brought forward this date is in serious jeopardy. The next step is to resolve the above CRs and then reevaluate the program timing.

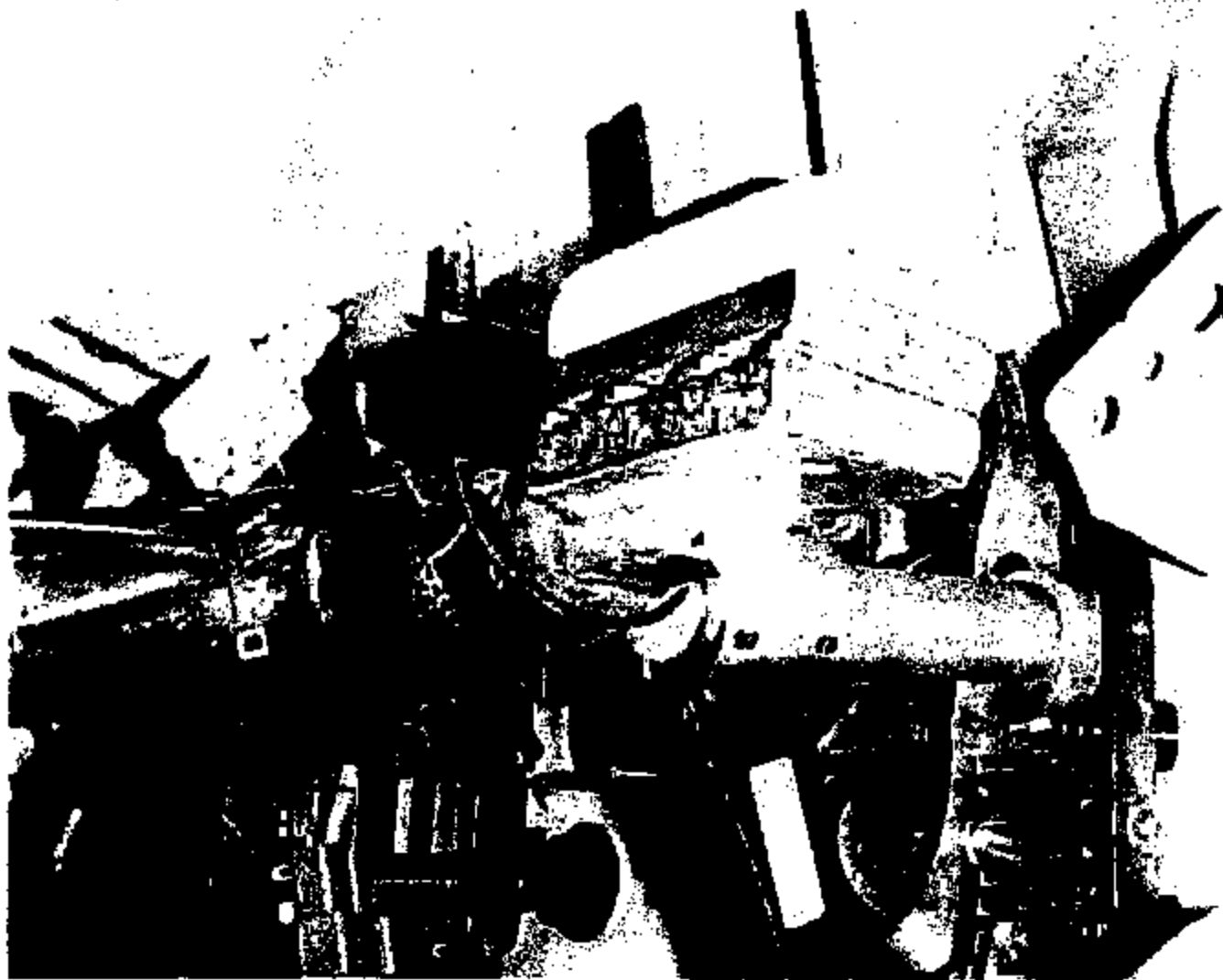
Thanks to all that participated in this trial.

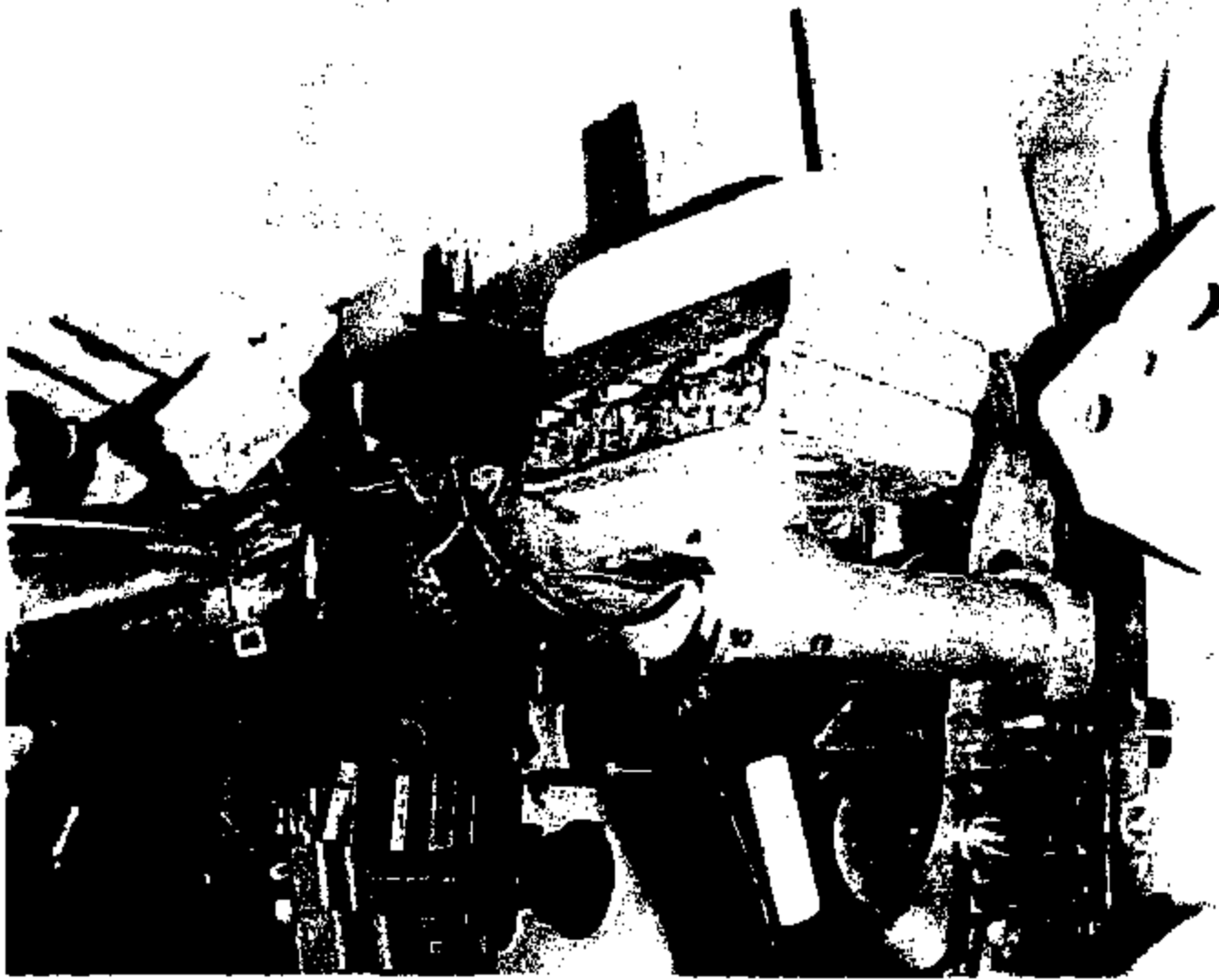
Stephen Buss

Kentucky Truck Plant PVT
Manufacturing Chassis Engineer
Phone: 502-429-2290
Fax: 502-429-2941









Concerns 2001

1482900A

CONCERN DETAIL

PRINT DATE/TIME: 06/06/31 19:01

PAGE: 1

CONCERN NUMBER

C11130615

ORIGIN ACTIVITY
ORIGINATOR:

BLOG TRUCK COMMODITY FAO
PETRAUSKAS, LISA E.

DATE:
PHONE:

06/06/31
313-390-8070

P NOT AUTH:
STATUS: W

CONCERN DESC:

REVISE ADJ. BRAKE PEDAL WITH NEW BRKT & INCREASED MOTOR CABLE

LOCAL: N

DESCRIPTION:

*

CO#ID:

SOLUTION:

PRODUCTS AFFECTED:

MODEL CODES: ORIG **

MCC:

ECC:

PLANTS AFFECTED:

PRIMARY ENG ACTY:

HAULD EVENT:

CPSC:

OTHER ENG ACTY:

PACK:

MODEL YEAR:

ECC MODEL YEAR:

MCC:

ECC:

CONCERN:

CAUSAL FACTORS:

%:

NOTICE NO:

OVERALL AGE DATE:

REJECTED DATE: 06/06/00

SUPPORTING DOCUMENTS:

AUTHORIZED DATE: 06/06/00

CONCURRED DATE:

06/06/00

AFFECTED PARTS

--NO PARTS AFFECTED BY THIS CONCERN--

FURTHER DESCRIPTION/CONCERN RESOLUTION/REASON FOR REJECTION ETC.

REVISE ADJ. BRAKE PEDAL WITH NEW BRKT & INCREASED MOTOR CABLE

INCORPORATE CHANGES ON ADJUSTABLE BRAKE PEDAL FOR GAS & DIESEL VEHICLES. CHANGES CONSIST OF MODIFYING MOTOR MOUNT BRACKET TO CHANGE POSITION OF MOTOR DIRECTION & INCREASING THE MOTOR CABLE THAT CONNECTS TO THE ADJ. ACCELERATOR PEDAL. THIS CHANGE WILL REDUCE PULL ON THE DRIVE CABLE WHEN THE ACCELERATOR PEDAL IS ACTUATED.

PETRAUSKAS, LIS 313-390-8070 M K7900 LPETRAUS WL00 06/06/31

RESOLUTION OF CONCERN

ACTIVITY:

AGE DATE:

REMARKS:

MODEL CODES:

NOTICE:

RESPONSE CODE:

MODULE LEADER NAME:

SCHEDULED DATES- APPROVED:
COMPLETE:
DISTRIBUTED:

ACTUAL DATES- APPROVED:
COMPLETE:
DISTRIBUTED:
REJECTED:

PROPOSED RESOLUTION

ACTIVITY

DATE

RESOLUTION

APPROVALS

-NONE-

WNR0900A

CONCERN DETAIL

PRINT DATE/TIME: 00/08/31 19:01
PAGE: 2

CONCERN NUMBER
C11130415

ORIGIN ACTIVITY: NLBO TRUCK COMMUNITY FAD
ORIGINATOR: PETRAUSKAS, LISA E.

DATE: 00/08/31
PHONE: 313-390-8070

P NOT AUTH:
STATUS: N

PROPOSED RESOLUTION

ACTIVITY	DATE	RESOLUTION				
REGION	DEPARTMENT	USERID	ACTIVITY	APPROVER'S NAME	DATE APPROVED	APPROVAL STATUS
N	K7900	LPETRAUS	NLBO	PETRAUSKAS, LISA E.	00/08/31	N

-END-

WMS900A

CONCERN DETAIL

PRINT DATE/TIME: 00/07/00 11:10
PAGE: 1

CONCERN NUMBER
C11103510

ORIGIN ACTIVITY: MLOO TRUCK COMMODITY FAD
ORIGINATOR: PETRAUSKAS, LISA E.

DATE: 00/05/23
PHONE: 313-390-8070

P MAT AUTHX
STATUS: X

CONCERN DESC: INCORPORATE TORQUE FIXES
DESCRIPTION: BRAKE ENGINEERING REQUESTS THE FOLLOWING DESIGN CHANGE TO
SOLUTION: F250/F350 & EXC ADJ ACCELERAT PEDALS. TORQUE ADJUST TO 25NM

LOCAL: N
COSID:
FIX PPM: N
PIN #:

PRODUCTS AFFECTED: P131
MODEL CODES: 0R10 01L TVF7 01L TVL1 02 TVL1
NCC:
ECC:

MODEL YEAR:
ECC MODEL YEAR:
NCC:
ECC: MNA5

PLANTS AFFECTED:
PRIMARY ENG ACTY: MLOO
BUILD EVENT: CP
CPSC:

OTHER ENG ACTY: MNB1 MLOO

CONCUR:
CAUSAL FACTORS:
N:

SUPPORTING DOCUMENTS: LISA PETRAUSKAS
AUTHORIZED DATE: 00/00/00

CONCURRED DATE: 00/00/00

NOTICE NO:
OVERALL AGE DATE:
REJECTED DATE: 00/06/12

AFFECTED PARTS

CPSC:
MLOO

NOTICE:

1C35	9726 A	RP F	0.00	0	0.100 LB CP	U 00/06/05	SHFT ASY-ACEL PDL
1C35	9F836 A	RP F	0.00	0	0.100 LB CP	U 00/06/05	PDL & SMS ASY - ACEL

FURTHER DESCRIPTION/CONCERN RESOLUTION/REASON FOR REJECTION ETC.

DESCRIPTION:

INCORPORATE TORQUE FIXES
BRAKE ENGINEERING REQUESTS THE FOLLOWING DESIGN CHANGE TO
F250/F350 & EXC ADJ ACCELERAT PEDALS. TORQUE ADJUST TO 25NM
PETRAUSKAS, LIE 313-390-8070 N K7900 LPETRAUS MLOO 06/05/23
METAL SLIPPERS INTO PLASTIC HOLES TO INSURE PETAL WILL WITHSTAND A TORQUE
ON 25 NEWTON-METERS UPON INSTALLATION AT THE PLANT.
PETRAUSKAS, LIE 313-390-8070 N K7900 LPETRAUS MLOO 06/06/01
2002 MY CP BUILD AIMS ISSUE 00315506. ORIGINATOR McLANTON,
ADJUSTABLE PEDALS NOT AVAILABLE FOR BUILD DUE TO CRACKING.
ENGINEER LISA PETRAUSKAS INFORMED OF AIMS CONCERN.
FREEMAN, SCOTT (313)31-72305 N K7900 BTF5759 MLOO 00/06/01
CONCERN ADDED TO THE 2002 JOB #1 P131 CHANGE MANAGEMENT REPORT FOR REVIEW.
REDON, LORI N PRNECC LCB4998 MHPH 00/06/05
RHD P131 FOR AUSTRALIA UNAFFECTED. ADJUSTABLE PEDALS NOT AVAILABLE ON RHD, THER
EFOR RHD UNAFFECTED.
WHITE, MATT 313-33-71638 N K2ND0 MSMITHSD MDRE 00/06/06
CONCERN MOVED TO THE 2001 R/C DECK PER DIRECTION FROM LISA PETRAUSKAS. THE
CHANGE WILL IN FOR FEB.
NEADY, MARY JAN 313-32-29423 N PRNECC MJR1712 MHPH 00/06/08
CONCERN CLOSED TO C11009662
PETRAUSKAS, LIE 313-390-8070 N K7900 LPETRAUS MLOO 00/06/10

-MORE-

2001
Torque
Accel
pedal

MM8980A

CONCERN DETAIL

PRINT DATE/TIME: 00/07/08 11:18
PAGE: 2

CONCERN NUMBER
C1103519

ORIGIN ACTIVITY: BLOO TRUCK COMMODITY FAD DATE: 08/05/23 P MGT AUTH: X
ORIGINATOR: PETRAUSKAS, LISA E. PHONE: 313-390-8070 STATUS: X

FURTHER DESCRIPTION/CONCERN RESOLUTION/REASON FOR REJECTION ETC.

DESCRIPTION: **THIS CONCERN IS CLOSED TO C11089662 PER ENGINEERING DIRECTION STATED ABOVE.
JESSIE, JORAM 342-339-3813 M K7980 JAN8966 MHC1 08/06/12

RESOLUTION OF CONCERN

ACTIVITY: BHO1 RESPONSE CODE: RC
AGE DATE: 00/06/05 MODULE LEADER NAME: NOT AFFECTED
REMARKS: MHC 6/5 LISA PETRAUSKAS
MODEL CODE: REJECTED:
NOTICE: SCHEDULED DATES- APPROVED: ACTUAL DATES- APPROVED:
COMPLETE: COMPLETE:
DISTRIBUTED: DISTRIBUTED:
MFG ACTY: REQUEST: FEAS: LEAD: VEN COST: TOOLING COST:
ASSEMBLY COST: FAC COST: VEN WGT: UNIT OF MEASURE:

ACTIVITY: BLOO RESPONSE CODE: RC
AGE DATE: 00/06/02 MODULE LEADER NAME:
REMARKS: CLOSED TO C11089662
MODEL CODE: REJECTED:
NOTICE: SCHEDULED DATES- APPROVED: ACTUAL DATES- APPROVED:
COMPLETE: COMPLETE:
DISTRIBUTED: DISTRIBUTED:
MFG ACTY: REQUEST: FEAS: LEAD: VEN COST: TOOLING COST:
ASSEMBLY COST: FAC COST: VEN WGT: UNIT OF MEASURE:

ENGINEERING ACTIVITY'S ESTIMATES:

VEHICLE COST: TOOLING COST: ASSEMBLY LABOR: FACILITY COST:
WARRANTY COST: VEN WGT: UNIT OF MEASURE: R/1000:
TON: ASSEMBLY MIN:

ENGINEERING ACTIVITY'S TARGETS:

VEHICLE COST: TOOLING COST: ASSEMBLY LABOR: FACILITY COST:
WARRANTY COST: VEN WGT: UNIT OF MEASURE: R/1000:
TMM: ASSEMBLY MIN:

-NONE-

WNR990A

CONCERN DETAIL

PRINT DATE/TIME: 00/07/00 11:10
PAGE: 3

CONCERN NUMBER
C11103519

ORIGIN ACTIVITY: RLOO TRUCK COMMODITY PAD
ORIGINATOR: PETRAUSKAS, LISA E.

DATE: 00/05/23
PHONE: 313-390-8070

P WGT AUTH: X
STATUS: X

-----RESOLUTION OF CONCERN-----

ENGINEERING ACTIVITY'S STATUS OF NOTICES (CALCULATED FROM NOTICES):

VEHICLE COST: TOOLING COST: ASSEMBLY LABOR: FACILITY COST:
WARRANTY COST: VEN MGT: UNIT OF MEASURE:
TQM:

-----PROPOSED RESOLUTION-----

ACTIVITY	DATE	RESOLUTION
----------	------	------------

-----TOTAL INCREMENTAL VEHICLE COST/WEIGHT/QUALITY-----

TOTAL ENGINEERING ACTIVITY ESTIMATES:

VEHICLE COST: TOOLING COST: ASSEMBLY LABOR: FACILITY COST:
WARRANTY COST: VEN MGT: UNIT OF MEASURE:

TOTAL CONCERN TARGETS:

VEHICLE COST: TOOLING COST: ASSEMBLY LABOR: FACILITY COST:
WARRANTY COST: VEN MGT: UNIT OF MEASURE:

TOTAL STATUS OF NOTICES (CALCULATED FROM NOTICES):

VEHICLE COST: TOOLING COST: ASSEMBLY LABOR: FACILITY COST:
WARRANTY COST: VEN MGT: UNIT OF MEASURE:

-----APPROVALS-----

REGION	DEPARTMENT	USERID	ACTIVITY	APPROVER'S NAME	DATE APPROVED	APPROVAL	STATUS
N	K7900	LPETRAID	NLOO	PETRAUSKAS, LISA E.	00/05/23		W
N	K7900	RYCOURU1	NLOO	YOUNG, MOHAMMAD	00/06/02		A
N	PMBECC	NJE1712	BNPH	NEARY, MARY JANE	00/06/19	U	
N	K7900	PRB4312		BEUCKELAERE, PHIL R.	00/00/00		
N	PURCHADM	POB2704		FOX, GEORGE	00/00/00		
N	K2800	LCASHMEL		CANNELL, LAURIE	00/00/00		
N	VORFBCEN	ADARRIGO		D'ARRIGO, BINO	00/00/00		
N	K7900	PRB4312		BEUCKELAERE, PHIL R.	00/00/00		
N	PURCHADM	POB2704		FOX, GEORGE	00/00/00		
N	K7900	JAN8944	NLOO	JESSIE, JOANN	00/06/12		X

-END-

U485980A

CONCERN DETAIL

PRINT DATE/TIME: 00/06/27 12:50
PAGE: 1

| CONCERN NUMBER |
C11106777

ORIGIN ACTIVITY: NLD0 TRUCK COMMODITY FAO
ORIGINATOR: FREEMAN, SCOTT T.

DATE: 00/06/01
PHONE: (313)31-72305

P NOT AUTH: 1
STATUS: A

CONCERN DESC: ADJUSTABLE PEDAL TAKEOUT P1A TO THE PEDAL IS NOT LONG ENOUGH
TO MATE WITH WIRING AND RETAIN THE WIRING CONNECTOR. THE
DESCRIPTION: CONNECTION MATES, BUT THE INTERCONNECT RESTS SOMEWHERE, AND
SOLUTION: HANGS NEAR THE INTERMEDIATE SHAFT. AFL HAS RESOLUTION TO RETAIN THE CONNECTION

LOCAL: N
COSID: 11
FIX PPH: N
PIN #:

PRODUCTS AFFECTED: F250/F350 & EXCURSION
MODEL CODES: ORIG 0%L TVF7 01 TVL1 0%L TVL1

MODEL YEAR:
ECC MODEL YEAR:
ECC: MMAS
ECC:

PLANTS AFFECTED:
PRIMARY ENG ACTY: NLD0
BUILD EVENT:
CPSC:

OTHER ENG ACTY: MHD1 M67 NLD0

PACK:

CONCUR:
CAUSAL FACTORS:
Z:

SUPPORTING DOCUMENTS: ORIG. SCOTT FREEMAN
AUTHORIZED DATE: 00/00/00

ADDED STARTER # 037
CONCURRED DATE: 00/00/00

NOTICE NO:
OVERALL AGE DATE:
REJECTED DATE: 00/00/00

*****AFFECTED PARTS*****

CPSC:
NLD0

NOTICE:

1C35	2450 A	RP	F	0.00	0	0.300	LB	PJ1	Y	PDL & BRKT ASY-BRK
1C35	2450 B	RP	F	0.00	0	0.400	LB	PJ1	Y	PDL & BRKT ASY-BRK

*****FURTHER DESCRIPTION/CONCERN RESOLUTION/REASON FOR REJECTION ETC.*****

DESCRIPTION: ADJUSTABLE PEDAL TAKEOUT P1A TO THE PEDAL IS NOT LONG ENOUGH
TO MATE WITH WIRING AND RETAIN THE WIRING CONNECTOR. THE
CONNECTION MATES, BUT THE INTERCONNECT RESTS SOMEWHERE, AND
HANGS NEAR THE INTERMEDIATE SHAFT. AFL HAS RESOLUTION TO RETAIN THE CONNECTION
, BUT NEEDS THE BRAKE PEDAL MOTOR WIRING PIGTAIL LENGTHENED BY APPROXIMATELY
6 INCHES. THIS SOLUTION SHOULD ELIMINATE POTENTIAL SVS ISSUES, AND
A WIRING SDS VIOLATION ISSUE, AND POTENTIAL QUALITY ISSUES WITH INTERFERENCE
ON THE INTERMEDIATE SHAFT. (PER AFL).
CP BUILD AINS ISSUE 319277. ORIGINATOR KSHERRA(1 (AFL)
ENGINEER LISA PETRAUSKAS INFORMED.

FREEMAN, SCOTT (313)31-72305 N K7900 STF5759 NLD0 00/06/01
ADD HOLE TO BRAKE PEDAL TO SUPPORT BRACKET FOR WIRE RETENTION TO INSURE CLEARAN
CE OF WIRE BUNDLE FROM CLUTCH PEDAL AND MAINTAIN PROPER WIRE ROUTING TO PAGE-
THROUGH GROMMET. C11059506

PETRAUSKAS, LIS 313-390-8070 R K7900 LPETRAUS NLD0 00/06/05
BRAKE ENGINEERING TO WORK WITH TELEFLEX TO REVISE THEIR MOTOR WIRING PIGTAIL
LENGTH BY 6 INCHES. THIS SHOULD RESOLVE ANY SVS ISSUES.

PETRAUSKAS, LIS 313-390-8070 R K7900 LPETRAUS NLD0 00/06/10
PLEASE MOVE TO THE 2001 RUNNING CHANGE PINK REPORT. THIS MUST BE INCORPORATED
IN CONJUNCTION WITH THE ADJUSTABLE PEDALS ADDED STARTER CURRENTLY TARGETTED FOR

(CONTINUED)

-MORE-

2001
Extra
6 inch

Brake
pedal

& Bracket w/
new hole

MMR8980A

CONCERN DETAIL

PRINT DATE/TIME: 00/06/27 12:50
PAGE: 2

CONCERN NUMBER
C11106777

ORIGIN ACTIVITY: NL00 TRUCK COMMODITY FAO DATE: 00/06/81 P MGT AUTH: I
ORIGINATOR: FREEMAN, SCOTT T. PHONE: (313)31-72305 STATUS: A

*****FURTHER DESCRIPTION/CONCERN RESOLUTION/REASON FOR REJECTION ETC.*****

DESCRIPTION: 2/1/2001 INCORPORATION.
BARKER, PAUL CE (313) 32-23498 M LYCRAS PWB6558 NL00 00/06/15
**CONCERN ADDED TO 2001 R/C P131/U137 AND ROUTED TO ENGINEERING FOR REVIEW &
INVESTIGATION.
JESSIE, JOANN 502-339-3813 M K7900 JAMS964 MHE1 00/06/15
ADDED STARTER NUMBER: 037
PETRAUSKAS, LIS 313-390-8070 M K7900 L.PETRAUS NL00 00/06/17
2001 R/C MOVED TO LEAD.
READY, MARY JAN 313-32-29423 M PHNECC RJN1712 MHPH 00/06/27

*****RESOLUTION OF CONCERN*****

ACTIVITY: NH61 RESPONSE CODE:
AGE DATE: 00/06/12 MODULE LEADER NAME: INVESTIGATE-CHASSIS
REMARKS: NEW 6/12
MODEL CODES: REJECTED:
NOTICE: SCHEDULED DATES- APPROVED: ACTUAL DATES- APPROVED:
COMPLETE: COMPLETE:
DISTRIBUTED: DISTRIBUTED:
MFG ACTY: REQUEST: FEAS: LEAD: VEN COST: TOOLING COST:
ASSEMBLY COST: FAC COST: VEN WGT: UNIT OF MEASURE:

*****RESOLUTION OF CONCERN*****

ACTIVITY: NH67 RESPONSE CODE:
AGE DATE: 00/06/15 MODULE LEADER NAME: J.JESSIE/UNRESOLVED/BRAKES
REMARKS: L.P./T.P.*REVIEW 6/22/00
MODEL CODES: REJECTED:
NOTICE: SCHEDULED DATES- APPROVED: ACTUAL DATES- APPROVED:
COMPLETE: COMPLETE:
DISTRIBUTED: DISTRIBUTED:
MFG ACTY: REQUEST: FEAS: LEAD: VEN COST: TOOLING COST:
ASSEMBLY COST: FAC COST: VEN WGT: UNIT OF MEASURE:

*****RESOLUTION OF CONCERN*****

ACTIVITY: NL00 RESPONSE CODE:
AGE DATE: 00/06/10 MODULE LEADER NAME:
REMARKS:
MODEL CODES: REJECTED:

-NONE-

UNR5900A

CONCERN DETAIL

PRINT DATE/TIME: 00/06/27 12:50

PAGE: 3

CONCERN NUMBER
C11106777

ORIGIN ACTIVITY: N100 TRUCK COMMODITY FAC
ORIGINATOR: FREEMAN, SCOTT T.

DATE: 00/06/01
PHONE: (313)51-72305

P MGT AUTH: I
STATUS: A

RESOLUTION OF CONCERN

ACTIVITY: #100
 NOTICE: SCHEDULED DATE- APPROVED: RESPONSE CODE: ACTUAL DATE- APPROVED:
 COMPLETE: COMPLETE:
 DISTRIBUTED: DISTRIBUTED:
 MFG ACTY: REQUEST: FEAS: LEAD: VEN COST: TOOLING COST:
 ASSEMBLY COST: FAC COST: VEN MGT: UNIT OF MEASURE:

PROPOSED RESOLUTION

ACTIVITY	DATE	RESOLUTION				
APPROVALS						
REGION	DEPARTMENT	USERID	ACTIVITY	APPROVER'S NAME	DATE APPROVED	APPROVAL STATUS
N	K7900	STP5759	N100	FREEMAN, SCOTT T.	00/06/01	M
N	K7900	LPETRAUS	N100	PETRAUSKAS, LISA E.	00/00/00	
N	K7900	APALLELA	N100	PALLELA, ANANTH	00/00/00	
N	K7900	LPETRAUS	N100	PETRAUSKAS, LISA E.	00/06/10	A
N	K7900	PH84312		BEUCKELAERE, PHIL R.	00/00/00	
N	PURCHADM	P002706		FOX, BEVERE	00/00/00	
N	K2800	LCARWEL		CARWELL, LAURIE	00/00/00	
N	V0WFCE00	ADARRIGO		D'ARRIGO, NINO	00/00/00	
N	K2860	KSHERSKO	N100	SHERSKOWSKI, KEVIN	00/00/00	
N	V0WFCE00	BPATEL1	VPLY	PATEL, BHARAT	00/00/00	
N	K7900	LDP2315	N100	PERRY, LINDA D.	00/00/00	
N	V0WFCE00	SBURS1	VPLY	BURS, STEPHEN	00/00/00	
N	KTPPV7	BRED1	N100	REED, BILL	00/00/00	
N	KTPPV7	TPATEL2	N100	PATEL, TEJ	00/00/00	

-END-

From: Jaeger, Sharon (S.A.)
Sent: Monday, February 03, 2003 3:50 PM
To: Hirtzel, Rich (R.J.)
Cc: Jaeger, Sharon (S.A.); Shore, John (J.); Ballnt, Gary (G.S.)
Subject: B Template

Rich, the date of April 15 is my best guess date for 60 days after publication.



DZX50AdjPedalLett
ers.doc

Ford Motor Company

Frank M. Ligon
Director
Vehicle Service and Programs
Ford Customer Service Division

Ford Motor Company
P. O. Box 1904
Dearborn, Michigan 48121

February 2003

TO: All Ford and Lincoln Mercury Dealers

SUBJECT: Customer Satisfaction Program 03B03: Certain MY 2002/2003 F-SuperDuty and Excursion vehicles built with 7.3L Diesel Engines, - Adjustable Pedal Replacement

OASIS: Yes
OWNER LIST: Yes
PROGRAM TERMS: This program will be in effect until March 31, 2004, regardless of mileage.

AFFECTED VEHICLES

Certain 2002/2003 F-SuperDuty and Excursion vehicles equipped with 7.3L Diesel Engines and Adjustable Pedals built at the Kentucky Truck Assembly Plant from March 20, 2001 through October 17, 2002.

REASON FOR PROGRAM

On certain vehicles, an electronic sensor that is part of the adjustable pedal assembly may not always perform to design intent. Vehicles experiencing a problem with the Adjustable Accelerator Pedal may exhibit a Malfunction Indicator Light (MIL) along with one or both of the following Diagnostic Trouble Codes (DTC) P0221 or P0122. As a result, the customer may experience an intermittent loss of acceleration, or the inability to increase engine RPM past idle when depressing the accelerator pedal.

SERVICE ACTION

The dealer will replace the Adjustable Pedal Assembly on all affected 7.3L diesel equipped vehicles, and clear continuous DTC codes P0221 and/or P0122. This program will not cover any other continuous Diagnostic Trouble Codes present.

ATTACHMENTS

Attachment I: Administrative Information
Attachment II: Labor Allowances and Parts Ordering Information
Attachment III: Technical Information
Customer Letter(s)

QUESTIONS?

Claims Information:..... 1-800-423-8851
FSA VIN Lists Support:..... 1-800-555-9801
Other Program Questions:..... 1-800-325-5621

Sincerely,

Frank M. Ligon

Customer Satisfaction Program 03B03
Certain 2002/2003 MY F-SuperDuty and Excursion vehicles built with 7.3L Diesel Engines,
Adjustable Pedal Replacement

OASIS

You must use OASIS to determine if a vehicle is eligible for this program.

PLEASE NOTE

- Customer letters for 03B03 will not be mailed until late March 2003.
- Correct all vehicles in stock before delivery.

DEALER-OWNER CONTACT

Promptly correct all affected vehicles on your FSA VIN Lists available through FMCDDealer.com or at <https://web.fsa.vinlists.dealerconnection.com>. Also, correct other affected vehicles identified in OASIS which are brought to your dealership.

Note: These dealer listings may contain customer names and addresses obtained from Motor Vehicle Registration Records. The use of such motor vehicle registration data for any purpose other than in connection with this customer satisfaction program is a violation of law in several states/provinces/countries. Accordingly, limit the use of this listing to the follow-up necessary to complete this action.

CLAIMS PREPARATION AND SUBMISSION

- Enter claims using DWE.
- Refer to ACESII manual for claims preparation and submission information.

OWNER REFUNDS

Ford Motor Company will only refund owner-paid repairs made before the date of the Owner Letter (or after the date of the Owner Letter if an emergency repair was made away from the servicing dealer.) Refer to ACESII manual for refund information.

Program Code:	03B03
Misc. Expense:	REFUND
Misc. Expense:	ADMIN
Misc. Expense:	0.2 Hrs.

RENTAL CARS

The use of rental vehicles is not authorized for this program.

Customer Satisfaction Program 03B03
Certain 2002/2003 MY F-SuperDuty and Excursion vehicles built with 7.3L Diesel Engines,
Adjustable Pedal Replacement

LABOR ALLOWANCES

Description	Labor Operation	Labor Time
Replace Adjustable Accelerator Pedal and clear one or both of the following Continuous DTC's, P0221 or P0122.	03B03B	0.4 Hours

Special Notes:

- Diagnostics performed beyond retrieving and clearing continuous DTC's P0221 and/or P0122, will not be paid for under this program.
- Pinpoint Diagnosis are not required to replace the Adjustable Accelerator Pedal, therefore labor time has been adjusted accordingly.
- Due to the specific DTC's to identify a failed Adjustable Accelerator Pedal, this program will not cover any other continuous DTC. Normal vehicle warranty would apply for any other DTC.
- There will be no related damage claims allowed for this program.

PARTS REQUIREMENTS / ORDERING INFORMATION

Parts will be direct shipped to dealers by seed stock orders for this Customer Satisfaction program to all dealers that have sold more than 10 involved vehicles. Dealers should begin receiving their individual seed stock allocation starting the week of February 10.

Dealers are advised to order a replacement part after a vehicle repair is completed at their dealership. The Call Center will need a VIN number, owner name and address of the repaired vehicle prior to placing a replenishment order for stock.

Dealers that sold less than 10 involved vehicles, that wish to stock one part, can call the Special Support Center and make a request.

Owner letters will be delayed until sufficient service parts become available.

All Order Types 325-5621	First 60 days after launch	Call 1-800-
All Order Types	61 days after launch	Normal order process

All order types will be restricted until April 15. To order parts, call 1-800-325-5621. Dealers will be required to provide the VIN number, and owner name and address of the vehicle involved.

Part Number (s)	Description	Quantity
-----------------	-------------	----------

2C3Z-9F836-DE	Pedal Assembly Adjustable Accelerator	1
---------------	---------------------------------------	---

ORDER INFORMATION

The DOR/COR for this program is 50294. This number identifies parts ordered for this Customer Satisfaction Program through the Special Service Support Center (1-800-325-5821).

DEALER PRICE

For latest prices, check DOES II or updated price book.

PARTS RETENTION

Follow the provisions of the Warranty and Policy Manual for "Parts Retention and Return Procedures".

ATTACHMENT II

Page 2 of 2

Customer Satisfaction Program 03B03

Certain 2002/2003 MY F-SuperDuty and Excursion vehicles built with 7.3L Diesel Engines,
Adjustable Pedal Replacement

EXCESS STOCK RETURN

Excess stock returned for credit must have been purchased from Ford Customer Service Division in accordance with Policy Procedure Bulletin 4000.

Customer Satisfaction Program 03B03
Certain 2002/2003 MY F-SuperDuty and Excursion vehicles built with 7.3L Diesel Engines,
Adjustable Pedal Replacement

TECHNICAL INSTRUCTIONS

Follow the removal and installation instructions found in Section 310-02 Acceleration Control, of the 2003 F-Super Duty/Excursion Workshop Manual.

NOTE: Pinpoint Diagnosis are not required to replace the Adjustable Accelerator Pedal, therefore labor time has been adjusted accordingly.

From: Hirtzel, Rich (R.J.)
Sent: Wednesday, January 29, 2003 3:40 PM
To: Jaeger, Sharon (S.A.)
Cc: Ballnt, Gary (G.S.)
Subject: 03B03 Adjustable Pedal Parts Info

Hi Sharon,
Here is the draft of the parts info page.
Make your changes/additions and forward back to me when its convenient.
You WILL get at least one more opportunity to review.



03B03PartsInfo.doc

Thanks Sharon!
Richard J. Hirtzel
rhirtzel@ford.com
313-317-4987
Knowledge is Power!

**DEMONSTRATION / DELIVERY HOLD:
Customer Satisfaction Program 03B03**
Certain 2002/2003 F-SuperDuty and Excursion vehicles built with 7.3L Diesel Engines,
Adjustable Pedal Replacement

LABOR ALLOWANCES [a1]

Description	Labor Operation	Labor Time
Repair	03B03B	0.3 Hours

PARTS REQUIREMENTS / ORDERING INFORMATION [a2]

Parts will not be direct shipped for this program. Order your parts requirement through normal order processing channels as noted below:

Stock Orders	Effective immediately	Normal order process
Interim Orders	Effective immediately	Normal order process
Emergency Orders	First 30 days after launch	Call 1-800-325-5621
Emergency Orders	31 days after launch	Normal order process

Part Number [a3]	Description	Quantity
2C3Z-9F835-DE	Pedal Assy, Adjustable Accelerator	1

ORDER INFORMATION

The DOR/COR for this program is 50250. This number identifies parts ordered for this Customer Satisfaction Program through the Special Service Support Center (1-800-325-5621).

DEALER PRICE [a4]

For latest prices, check DOES II or updated price book.

PARTS RETENTION

Follow the provisions of the Warranty and Policy Manual for "Parts Retention and Return Procedures".

EXCESS STOCK RETURN [a5]

Excess stock returned for credit must have been purchased from Ford Customer Service Division in accordance with Policy Procedure Bulletin 4000.

**DEMONSTRATION / DELIVERY HOLD:
Customer Satisfaction Program 03B03**
Certain 2002/2003 F-SuperDuty and Excursion vehicles built with 7.3L Diesel Engines,
Adjustable Pedal Replacement

LABOR ALLOWANCES [a1]

Description	Labor Operation	Labor Time
Repair	03B03B	0.3 Hours

PARTS REQUIREMENTS / ORDERING INFORMATION [a2]

Parts will not be direct shipped for this program. Order your parts requirement through normal order processing channels as noted below:

Stock Orders	Effective immediately	Normal order process
Interim Orders	Effective immediately	Normal order process
Emergency Orders	First 30 days after launch	Call 1-800-325-5821
Emergency Orders	31 days after launch	Normal order process

Part Number [a3]	Description	Quantity
2C3Z-9F838-DE	Pedal Asy, Adjustable Accelerator	1

ORDER INFORMATION

The DOR/COR for this program is 50250. This number identifies parts ordered for this Customer Satisfaction Program through the Special Service Support Center (1-800-325-5821).

DEALER PRICE [a4]

For latest prices, check DOES II or updated price book.

PARTS RETENTION

Follow the provisions of the Warranty and Policy Manual for "Parts Retention and Return Procedures".

EXCESS STOCK RETURN [a5]

Excess stock returned for credit must have been purchased from Ford Customer Service Division in accordance with Policy Procedure Bulletin 4000.

From: Burrows, Jim (J.A.)
Sent: Sunday, February 17, 2002 9:23 PM
To: Slachta, Joseph (J.F.)
Subject: FW: NHTSA Report on ETC Pedals

Joe, Williams has a small recall for their truck business. FYI

Jim Burrows

James A. Burrows, Buyer
Pedals, Cables, and Parking Brakes
Chassis & Electrical Commodity Management
MD665/Rm. 282/QMP
Phone: (313) 33-72505
Fax: (313) 31-74280
E-mail: jburrow3@ford.com

-----Original Message-----

From: West, Gregory (G.S.)
Sent: Wednesday, February 13, 2002 3:20 PM
To: Liposky, Lawrence (L.J.); Burrows, Jim (J.A.)
Subject: FW: NHTSA Report on ETC Pedals

FYI

-----Original Message-----

From: Gaw, Ron (R.M.)
Sent: Wednesday, February 13, 2002 2:28 PM
To: West, Gregory (G.S.)
Subject: FW: NHTSA Report on ETC Pedals

Greg, have you seen this?

-----Original Message-----

From: Shipp, Terri (T.L.)
Sent: Saturday, February 09, 2002 9:37 AM
To: Conrad, James (J.A.); Halper, Rachel (R.E.); White, Douglas (D.B.); Nowka, Erich (E.J.); Raquepau, Alden (A.P.); Childress, Terry (T.W.); McCormick, Lynn (L.T.); Gaw, Ron (R.M.); Dalton, Joel (J.D.); Friszsmuth, Florian (F.)
Subject: NHTSA Report on ETC Pedals

FYI - Below is the first NHTSA related issue that I have found related to electronic throttle control. It will be added to the Accelerator Control Campaign Prevention Matrix.

Freightliner Corporation
Models: Freightliner XCS Year: 2001
Freightliner XB Year: 2001
Freightliner XC Year: 2001
Freightliner VCL Year: 2001
Freightliner Business Class Year: 2001
American LaFrance Eagle Year: 2001
American LaFrance Metropolitan Year: 2001
Orion V Year: 2001
Thomas MVP ER Year: 2001
Thomas ER Transit Year: 2001

Number Involved: 2,700

Dates of Manufacture:

Effect: On certain medium duty trucks, fire trucks, transit buses, and school buses equipped with electronic throttle control/accelerator pedals supplied by Williams Controls Industries, the weld attaching the clevis to the plate has insufficient penetration and could allow the clevis to separate from the plate. If the clevis separated from the plate while the vehicle was in use, the vehicle would return to Idle, increasing the risk of a crash.

Remedy: Dealers will replace these pedals. The manufacturer has reported that owner notification will begin during January 2002. Owners who do not receive the free remedy within a reasonable time should contact Freightliner at 1-800-547-0712.

[NHTSA Recall No. 01V322002/Freightliner Recall No. FL-389A]

Terri Shipp

Ford Motor Company

P/T Subsystems Engineering Technology

GCE Campaign Prevention Specialist

(Phone) 313-33-73831 / (Fax) 313-62-16020

Cube 1AF12, MD #3, FPC-A

tshipp@ford.com <mailto:tshipp@ford.com>

www.ford.com <http://www.ford.com>

From: Tarquinto, Jody (JAT.)
Sent: Friday, July 18, 2003 9:30 AM
To: West, Gregory (G.S.); Hilding, Robert (R.J.); DeLisle, Bobbi (R.)
Cc: Lott, Brian (B.T.); Oswald, Greg (G.G.); Fodera, Susan (S.)
Subject: 03B03: Campaign 03B03 - move from Closed Pending to Closed

I have review the ES on the web. All other items were closed prior to the PAC closure meeting. Bobbi, please move this issue from Closed Pending to Closed.
Thanks.

Jody Tarquinto

Global Core Quality, Campaign Prevention
Telephone / Fax 313.24.81252
Alpha Pager 313.754.1043
mailto: 3137541043@myaimail.com
mailto: jtarquin@ford.com

-----Original Message-----

From: West, Gregory (G.S.)
Sent: Thursday, July 17, 2003 7:38 AM
To: Tarquinto, Jody (JAT.); Hilding, Robert (R.J.); DeLisle, Bobbi (R.)
Cc: Lott, Brian (B.T.); Oswald, Greg (G.G.)
Subject: RE: Campaign 03B03 - move from Closed Pending to Closed

Part # should read ES5C34-9F836-AA

-----Original Message-----

From: Tarquinto, Jody (JAT.)
Sent: Wednesday, July 16, 2003 4:33 PM
To: Hilding, Robert (R.J.); DeLisle, Bobbi (R.)
Cc: Lott, Brian (B.T.); West, Gregory (G.S.); Oswald, Greg (G.G.)
Subject: RE: Campaign 03B03 - move from Closed Pending to Closed

Please provide better instruction, I am not able to view this document. Thanks in advance.

Jody Tarquinto

Global Core Quality, Campaign Prevention
Telephone / Fax 313.24.81252
Alpha Pager 313.754.1043
mailto: 3137541043@myaimail.com
mailto: jtarquin@ford.com

-----Original Message-----

From: Hilding, Robert (R.J.)
Sent: Wednesday, July 16, 2003 2:32 PM
To: DeLisle, Bobbi (R.)
Cc: Tarquinto, Jody (JAT.); Lott, Brian (B.T.); West, Gregory (G.S.); Oswald, Greg (G.G.)
Subject: Campaign 03B03 - move from Closed Pending to Closed

Hi Bobbi,

Please move 03B03 to closed. The remaining item was to put the ES on the web, and it can be found in DocMan, (search, part number) www.msxi.ford.com for part# ES53 9F836 AA.

CQIS Report Number: 3HSL4001 Program Type: CQD
Report Source: CQ - CD&A - CQD - FQE

Orig Rpt #:
Report Date: 08/19/2003

----- R E P O R T S U M M A R Y -----

Vehicle: 2003 F250 4X4,CRW CAB,PICKUP VIN: 1FTNW21P73ED78139
Engine: 6.0L DIESEL DI V8 Odometer: 27 MILES
Operating Environ: WCC: STG1
Vehicle Use: Rsp. Act:

Symp: 6 12 0 00 DRIVEABILITY SURGE
OTHER (CODE NOT AVAILABLE) OTHER (CODE NOT AVAILABLE)

Addl Symptom:
Other Veh. with Concern: Severity Rating - Customer: Engineering:

Causal Component: 3C3Z 9F836 BA PEDAL & SENSOR ASY
Causal Factor: Feature: Loc:
Causal Condition: INOPERATIVE Photo: Attachments: 4
Component Test Status: TO BE RTND-NOT ---- Return Loc:
Vehicle Fixed?: YES Customer Satisfied?: Repair Effectiveness (%):

----- C O M M E N T S -----

Type	Comments
CONCERN	CHECK ENGINE LIGHT IS ON AND ENGINE SURGES
REPAIR	TECHNICIAN VERIFIED CONCERN. ENGINE SURGES SHARPLY AT IDLE. RETRIEVED CODES P1239 AND P1240. RAN PINPOINT TEST AND DETERMINED THAT THERE WAS AN INTERNAL SHORT IN THE ACCELERATOR PEDAL. REPLACED PEDAL ASSEMBLY AND RETESTED WITH NO ADDITIONAL CONCERNS. PICTURE OF PART IS IN CQIS IMAGING FOR REFERENCE. PARTS WILL BE HELD BY DALLAS FQE FOR 30 DAYS AND ARE AVAILABLE UPON REQUEST. DAVE COX(DCOX14)-DALLAS FQE-2143940489

----- C O N C E R N D E T A I L S -----

Intermittant?: NO Come Back?: Air Temp.: Grid Location:
Towed In?: Quits on Road?: Restarts?: Verification:
----- D I A G N O S T I C I N F O R M A T I O N -----
Symp. Verif?: Ease of Diagnosis: Assistance Level:
Comp. Timing: Base Timing: MIL Light on?: YES
Test Stand: Road Test: SD Number:
Prior Repair Attempts: Repair Prior to Call: NO
DTCs KOEO: KOEC:
KOER: CB:

----- S E R V I C E A C T I O N S -----

Returned Date: Analysis Date: Analyst: DCOX14

Repair Type	Component Number	Number Type	Description	Causal Comp.
RPL	3C3Z 9F836 BA	SERVICE	PEDAL & SENSOR ASY	YES

----- V E H I C L E D E T A I L S -----

Vehicle Build Date: 05/12/2003 Warranty Start Date: 09/01/2003
Date of Sale: 09/01/2003 Selling Dlr (Mkt, Dlr, Sub):
Dealer Special Order: Gross Vehicle Weight: 8 800
LH/RH Drive: LBS

CQIS Report Number: 3HSL4001 Program Type: CQD
Report Source: CQ - CD&A - CQD - PQE

Orig Rpt #:
Report Date: 08/19/2003

----- V E H I C L E D E T A I L S -----

----- E N G I N E -----

Engine: 6.0L DIESEL DI V8 Tag: DG 042 AE
Bld Dt: Serial #: 80076153 Plt:

----- T R A N S M I S S I O N -----

Trans: 5R110W 5SP-A HI/TORQ Part #:
Bld Dt: Serial #:
Model: Plt: Shift:

----- A X L E -----

Axle: 6084# FORD 3.73 LOCK Id Tag Code: Bld Dt:
Serial #: Plt:

----- A D D I T I O N A L -----

Tire: LT265/75R-16E OWL A-T Brand:
Radio: AM/FM STRO/CD CHANGER/CLK A/C: AC B-????????????????????
Paint: GREEN EXTERIOR PAINT FAMILY ----- DARK SHADOW GREY CC

----- R E P O R T O R I G I N A T O R - R E P A I R F A C I L I T Y - C U S T O M E R I N F O R M A T I O N -----

Orig/Caller: DAVID COX Title: FIELD QUALITY ENGINEER
Phone:

Rpair Dlr: USA 02413 - Payton-Wright Ford Sales, I Ph#: nc.(817) 481-3531
City: Grapevine State: Texas
Country: United States Regio: n Southwest - 52
Claim #/Date: 362524 08/15/2003
Customer Name: [REDACTED] City:

Specialist's
Name: DAVID COX

----- C Q I S V I N H I S T O R Y -----

NO VIN HISTORY AVAILABLE

--- S U P P L E M E N T A L S U R V E Y : *** NO SURVEY DESCRIPTION *** ---
NO SURVEY AVAILABLE

----- V E H I C L E ' S W A R R A N T Y H I S T O R Y (365 days only) -----

Repair Dealer Id	Repair Date	Order	Odometer (Miles)	Rpr Nbr	Causl Cond.	Service Pfx	Part Base	Number Sfx	Labor Operation
USA02413	06/23/03	356665	6	1	B2		TDRIVE		TDRIVE
USA02413	06/30/03	357553	9	1	D8		W300012		6007D
USA02413	06/30/03	357553	9	1	D8		6007		MT18402C2
USA02413	08/13/03	362524	27	1	42	3C3Z	9F836 BA		6005F
USA02413	08/13/03	362524	27	1	42				6005F1
USA02413	08/13/03	362524	27	1	42				6005F2
USA02413	08/13/03	362524	27	1	42				6005F6
USA02413	08/13/03	362524	27	1	42				MT9F836
USA02413	08/13/03	362524	27	2	B4		14401		19700A
USA02413	08/13/03	362524	27	2	B4				14200A
USA02413	08/13/03	362524	27	2	B4				14200A1
USA02413	08/13/03	362524	27	2	B4				04320B

From: Heaton, Christopher (C.E.)
Sent: Tuesday, August 27, 2002 11:02 AM
To: West, Gregory (G.S.)
CC: Nicasri, Paul (P.R.)
Subject: ETC

Greg,

Can you provide us with a couple of new samples of the ETC. Also, I was wondering if you could get some new samples that do not have the greases applied. If you could get the samples by tomorrow then we can get them at the meeting at SRL tomorrow.

Christopher E. Heaton

cheaton@ford.com
Research Engineer
Vehicle Electronics and Systems Dept.
Ford Research Laboratory
Phone: (313)845-4214 Fax: (313)325-8239

From: Heaton, Christopher (C.E.)
Sent: Tuesday, August 27, 2002 9:05 AM
To: Nicasri, Paul (P.R.)
Subject: ETC

I put the pictures of the second ETC on our share drive—can you make a copy of the pictures for Roo and I to look at from the folder ETC#2 (combine images). Thanks

Christopher E. Heaton
cheaton@ford.com
Research Engineer
Vehicle Electronics and Systems Dept.
Ford Research Laboratory
Phone: (313)645-4214 Fax: (313)323-8239

From: Heaton, Christopher (C.E.)
Sent: Monday, August 26, 2002 5:55 PM
To: Simko, Steven (S.J.)
cc: Nicasri, Paul (P.R.)
Subject: ETC

Steve,

I'm not sure what we would be able to see from more pictures of the ETC, but you never know until you try. I plan on being in at 8:30 on Tuesday and I will take another look before you perform the SEM.

Christopher E. Heaton

cheaton@ford.com

Research Engineer

Vehicle Electronics and Systems Dept.

Ford Research Laboratory

Phone: (313)645-4214 Fax: (313)323-8239

From: McDonagh, Scot (S.M.)
Sent: Friday, July 26, 2002 12:16 PM
To: West, Gregory (G.S.)
Cc: Kramer, Michael (M.T.); Smith, Ryan (R.E.); Williams Jr., James (J.P.)
Subject: ETC Pedals

FYI- Can you retrieve this pedal assembly for analysis ??

V44 MECHANICAL MALFUNCTION INDICATION PEDAL & SENSOR ASY 6/28/02 7/18/02 3 TEXAN FORD, INC. SUPER SINGLE CAB (SUPER CAB) KATY TX 281-5799100 4617 368222A KENTUCKY TRUCK PLANT BUILD 1P1NX20F82ED59264 \$342.79 CCC Desc: OTHER ENGINE TROUBLES Cust.Comments: ACCEL PEDAL DOES NOT WORK. IE WHEN YOU PRESS ON THE PEDAL W YOUR FOOT THE ENGINE DOES NOT IN Mech.Comments: 3 UNSOLD UNIT CC:42 FP:TP PERFORMED DIESEL DIAG. STEPS 1 5 RETRIVED CODES P0122 AND P0123 PERFORMED PIN POINT TEST STEPS 1 6 FOUND THROTTLE PEDAL TO BE BE FAULTY. REPLACED THROTTLE PEDAL. ROAD TESTED OK.

Scot G. McDonagh
Super-Duty/Excursion
Powertrain Quality Leader
Phone- (313) 337-8091
Pager- (734) 670-5742
Fax- (313) 621-8083
E-Mail: smcdonag@ford.com

From: McDonagh, Scot (S.M.)
Sent: Friday, August 02, 2002 11:36 AM
To: Howe, Brian (B.T.)
Cc: West, Gregory (G.S.); Kramer, Michael (M.T.); Williams Jr., James (J.P.); Smith, Ryan (R.E.); Hale, Curt (B.C.)
Subject: ETC Pedals
Importance: High

Brian- Per our conversation please box up and ship me any and all of the 2C3Z Teleflex ETC Pedals you can get a hold of to the enclosed shipping address: I would like to have them for next Tuesdays meeting with Teleflex.

Scot McDonagh
North American Truck Group
Product Development Center
20901 Oakwood Boulevard
Mail Drop 369, Cube 2G-C21
Dearborn, MI 48121-2030 USA

Thank you,

Scot G. McDonagh
Super-Duty/Excursion
Powertrain Quality Leader
Phone- (313) 337-8091
Pager- (734) 670-5742
Fax- (313) 621-8083
E-Mail: smcdonag@ford.com

From: McDonagh, Scot (S.M.)
Sent: Friday, August 02, 2002 11:47 AM
To: West, Gregory (G.S.); Kramer, Michael (M.T.); Williams Jr., James (J.P.); Smith, Ryan (R.E.); Hale, Curt (B.C.); Lipsky, Lawrence (L.J.); Flynn, Pat (J.P.); Williams, Brent (B.A.)
Subject: FW: ETC Pedals

FYI- 47 Teleflex pedals sold yesterday. Brian is shipping me (Next day air) 2C3Z pedals for Tuesday's meeting with Teleflex. Thank you

Scot G. McDonagh
Super-Duty/Excursion
Powertrain Quality Leader
Phone- (313) 337-8091
Pager- (734) 670-5742
Fax- (313) 621-8083
E-Mail: smcdonag@ford.com

-----Original Message-----

From: Howe, Brian (B.T.)
Sent: Friday, August 02, 2002 11:42 AM
To: McDonagh, Scot (S.M.)
Subject: RE: ETC Pedals

Scot, Here is the sales data that you can use in the meeting. The first day of August we sold 47.

SERVICE PART: 2C3Z- 9F836-DA__ PEDAL
RECEIVING LOCATION: _____ DEMAND GROUP: ___
CUSTOMER TYPE: _____ BACKCAST: Y
SDI Code:

A
C MONTH YEAR Quantity Replaced Part Number Message

08	2002	47		
07	2002	1105		
06	2002	895		
05	2002	445		
04	2002	186		
03	2002	94		
02	2002	52		
01	2002	43		
12	2001	27		
11	2001	22		
10	2001	15		

F1=Help F4=FirstRecLoc F5=FirstCustType F6=FirstYear
MORE RECORDS AVAILABLE

LPCVO45

Brian Howe
Field Quality Engineer
Enhanced Concern Identification
Ford Customer Service Division
T02 205-3634 bhowe2@ford.com

-----Original Message-----

PE03-844 10183

From: McDonagh, Scot (S.M.)
Sent: Friday, August 02, 2002 8:36 AM
To: Howe, Brian (B.T.)
Cc: West, Gregory (G.S.); Kramer, Michael (M.T.); Williams Jr., James (J.P.); Smith, Ryan (R.E.); Hata, Curt (B.C.)
Subject: ETC Pedals
Importance: High

Brian- Per our conversation please box up and ship me any and all of the 2C3Z Teleflex ETC Pedals you can get a hold of to the enclosed shipping address: I would like to have them for next Tuesdays meeting with Teleflex.

Scot McDonagh
North American Truck Group
Product Development Center
20901 Oakwood Boulevard
Mail Drop 389, Cube 2G-C21
Dearborn, MI 48121-2030 USA

Thank you,

Scot G. McDonagh
Super-Duty/Excursion
Powertrain Quality Leader
Phone- (313) 337-8091
Pager- (734) 670-5742
Fax- (313) 621-8083
E-Mail: smcdonag@ford.com

Subject: FW: 7.3L ETC pedal upper voltage limit
Location: PDC 2BD49
Start: Tue 8/6/2002 12:00 PM
End: Tue 8/6/2002 12:30 PM
Show Time As: Tentative
Recurrence: (none)
Meeting Status: Not yet responded
Required Attendees: West, Gregory (G.S.); Smith, Ryan (R.E.)

FYI if you would like to join us.

---Original Appointment---

From: West, Gregory (G.S.)
Sent: Monday, August 05, 2002 7:56 AM
To: West, Gregory (G.S.); 'scortev@visteon.com'; Kromberg, Arnold (A.W.); PDC Conf Rm 2B-D49 (10)
Subject: 7.3L ETC pedal upper voltage limit
Where: Tuesday, August 06, 2002 12:00 PM-12:30 PM (GMT-05:00) Eastern Time (US & Canada).
PDC 2BD49

Please invite anyone else that would have input.

From: McDonagh, Scot (S.M.)
Sent: Wednesday, July 31, 2002 7:59 AM
To: West, Gregory (G.S.)
Co: Kramer, Michael (M.T.); Smith, Ryan (R.E.); Williams Jr., James (J.P.)
Subject: ETC Pedal Warranty Claims

ETC Warranty/FYI

V41 SMOOTH RESPONSE PEDAL & SENSOR ASY 5/6/02 7/5/02 6125 TEXAS MOTORS FORD SUPER SINGLE CAB (SUPER CAB)
FORT WORTH TX 817-2464921 2584 20824101 KENTUCKY TRUCK PLANT BUILD 1FTNX20P6ZED11696 \$364.52 CCC Desc: POOR
PERFORMANCE/LACKS POWER Cmt.Comments: CUST REPORTS TRUCK WILL NOT ACCELERATE WHEN PEDAL IS DEPRESSED.
Mech.Comments: KOBO PASS,KOER PASS,KOHC P0123,INJ EL PASS,CCT PASS,PINPOINT TEST DD, ADDITIONAL PINPOINT TEST
CIRCUIT 20,355,357 FOR+ SHORT TO POWER IN HARNESS FROM AP TO PCM, REPLACED ACCEL PEDAL, CLEARED, ROAD
TESTED, RETESTED

V44 MECHANICAL MALFUNCTION INDICATION CABLE-ADJ PETAL 6/14/02 7/24/02 13 LAVONIA FORD, INC. DOUBLE CAB (CREW
CAB) LAVONIA GA 706-3561933 4101 1476701 KENTUCKY TRUCK PLANT BUILD 1FTNW20F42ED54615 \$90.46 CCC Desc: OTHER
ENGINE TROUBLES Cmt.Comments: CUSTOMER STATE S ADJUSTASBLE PEDAL INOP. D50 Mech.Comments: OPEN IN MOTOR
REPLACE PEDAL ADJ MOTOR

Scot G. McDonagh
Super-Duty/Excursion
Powertrain Quality Leader
Phone - (313) 337-8091
Pager - (734) 670-5742
Fax - (313) 621-8083
E-Mail: smcdonag@ford.com

CQIS Report Number: 3HGMZ004 Program Type: CQD
Report Source: CQ - CD&A - CQD - PQE

Orig Rpt #:
Report Date: 08/07/2003

----- R E P O R T S U M M A R Y -----

Vehicle: 2003 F350 4X4,CRWCAB ,PICKUP VIN: 1PTWV33F13BA15351
 Engine: 7.3L DI NAVISTAR T/C DIESEL Odometer: 34,463 MILES
 Operating Environ: WCC: ST01
 Vehicle Use: Rep. Act:

Symp: 6 24 0 00 DRIVEABILITY ACCELERATOR PEDAL
 OTHER (CODE NOT AVAILABLE) OTHER (CODE NOT AVAILABLE)

Add Symptom:
 Other Veh. with Concern: Severity Rating - Customer: Engineering:

Causal Component: 2C3Z 9F836 DE PEDAL & SENSOR ASY
 Causal Factor: Feature: Loc:
 Causal Condition: INOPERATIVE Photo: Attachments: 0
 Component Test Status: TO BE RTND-NOT ---- Return Loc:
 Vehicle Fixed?: YES Customer Satisfied?: Repair Effectiveness (%):

----- C O M M E N T S -----

Type	Comments
CONCERN	CHECK ENGINE LIGHT ON AND LACK OF ACCELERATION WHILE DRIVING
REPAIR	TECHNICIAN VERIFIED CONCERN. RAN NGE KOEO TEST AND FOUND CODES P0222 AND P0220. RAN PINPOINT TEST AND FOUND THE TP SENSOR INOP. REPLACED THE ACCELERATOR PEDAL ASSEMBLY AND RETESTED WITH NO ADDITIONAL CONCERNS. PICTURE OF PART IS IN CQIS IMAGING FOR REFERENCE. PARTS WILL BE HELD BY DALLAS FQE FOR 30 DAYS AND ARE AVAILABLE UPON REQUEST. DAVE COX(DCOX14)-DALLAS FQE-2143940489

----- C O N C E R N D E T A I L S -----

Intermittent?: NO Come Back?: Air Temp.: Grid Location:
 Towed In?: Quits on Road?: Restarts?: Verification:
 ----- D I A G N O S T I C I N F O R M A T I O N -----
 Symp. Verif?: Ease of Diagnosis: Assistance Level:
 Comp. Timing: Base Timing: MIL Light on?: YES
 Test Stand: Road Test: SD Number:
 Prior Repair Attempts: Repair Prior to Call: NO
 DTCs KOEO: KOEC:
 KOER: CB:

----- S E R V I C E A C T I O N S -----

Returned Date: Analysis Date: Analyst: DCOX14

Repair Type	Component Number	Number Type	Description	Causal Comp.
RPL	2C3Z 9F836 DE	SERVICE	PEDAL & SENSOR ASY	YES

----- V E H I C L E D E T A I L S -----

Vehicle Build Date: 08/05/2002 Warranty Start Date: 08/24/2002
 Date of Sale: 08/24/2002 Selling Dlr (Mkt,Plr,Sub):
 Dealer Special Order: Gross Vehicle Weight: 500
 LH/RH Drive: LBS

CQIS Report Number: 3EGMZ004 Program Type: CQD
Report Source: CQ - CD&A - CQD - FQE

Orig Rpt #:
Report Date: 08/07/2003

----- V E H I C L E D E T A I L S -----

----- E N G I N E -----

Engine: 7.3L DI NAVISTAR T/C DIESEL Tag: CE 002 AH
Bld Dt: Serial #: 1964479 Plt:

----- T R A N S M I S S I O N -----

Trans: 4R100 AUTO/DIESEL Part #:
Bld Dt: Serial #: 2
Model: Plt: Shift:

----- A D D I T I O N A L -----

Tire: LT235/85R-16E OWL A-T Brand:
Radio: AM/FM STRO/CD CHANGER/CLK A/C: AC B-????????????????????
Paint: GREEN EXTERIOR PAINT FAMILY ----- DARK SHADOW GREY CC

----- R E P O R T O R I G I N A T O R - R E P A I R F A C I L I T Y - C U S T O M E R I N F O R M A T I O N -----

Orig/Caller: DAVID COX Title: FIELD QUALITY ENGINEER
Phone: - -

Repair Dlr: USA 06192 - Town East Ford Ph#: (972) 270-6441
City: Mesquite State: Texas
Country: United States Regio: n Southwest - 52
Claim #/Date: 845993 08/07/2003
Customer Name: [REDACTED] City:

Specialist's
Name: DAVID COX

----- C Q I S V I N H I S T O R Y -----

NO VIN HISTORY AVAILABLE

--- S U P P L E M E N T A L S U R V E Y : *** NO SURVEY DESCRIPTION *** ---
NO SURVEY AVAILABLE

----- V E H I C L E ' S W A R R A N T Y H I S T O R Y (365 days only) -----

Repair Dealer Id	Date	Repair Order	Odometer (Miles)	Rpr Mbr	Causl Cond.	Service Pfx	Part Base	Number Sfx	Labor Operation
USA06192	12/18/02	823526	10819	1	82	F4TZ	6731 A		MB10
USA06192	12/18/02	823526	10819	1	82	XO	15W40 QSD		
USA06192	12/18/02	823526	10819	1	82		MAINT		
USA06192	02/05/03	828652	15682	1	82	XO	15W40 QSD		MB15
USA06192	02/05/03	828652	15682	1	82	F4TZ	6731 A		
USA06192	02/05/03	828652	15682	1	82	FW	16		
USA06192	02/05/03	828652	15682	1	82		MAINT		
USA06192	03/29/03	833369	20070	1	82	XO	15W40 QSD		MB20
USA06192	03/29/03	833369	20070	1	82	F4TZ	6731 A		
USA06192	03/29/03	833369	20070	1	82		MAINT		
USA06192	05/01/03	836896	24621	1	82	XO	15W40 QSD		MB25
USA06192	05/01/03	836896	24621	1	82	F4TZ	6731 A		MULTI
USA06192	05/01/03	836896	24621	1	82		MAINT		
USA06192	08/06/03	846993	34463	1		2C3Z	9P836 DE		03B03B
USA06192	08/18/03	848176	35589	1	46	F65Z	17B676 AB		12651D
USA06192	08/18/03	848176	35589	1	46				17676A

From: Petrauskas, Lisa (L.E.)
Sent: Friday, June 02, 2000 8:05 AM
To: Alan Farrah (E-mail); Elio G. Evangelista (E-mail); William Teller (E-mail)
cc: Beuckelaere, Phillip (P.R.); Petrauskas, Lisa (L.E.); Clanton, Mozell (M.J.)
Subject: FW: DVP for adjustable pedal

Alan - Elio,

Could you e-mail the latest FMEA & DVP to Mozell Clanton or leave me extra copies on my desk.

thanks,
Lisa

-----Original Message-----

From: Clanton, Mozell (M.J.)
Sent: Friday, June 02, 2000 7:47 AM
To: Beuckelaere, Phillip (P.R.); Petrauskas, Lisa (L.E.)
Subject: DVP for adjustable pedal

I am preparing a summary for Monday's Design Review. I need a DVP & fema for the adjustable pedal ASAP!

Mozell Clanton
P131/U137 OPD
2G - J12 PDC MD139
phone: 313 - 337-1675
fax: 313 - 621-6082
telex: 313 - 795-0341

From: Stanton, Richard (R.A.)
Sent: Wednesday, September 08, 2000 1:30 PM
To: Buss, Stephen (S.D.)
Cc: Petrauskas, Lisa (L.E.)
Subject: adj. pedal

We adjusted the accelerator pedal to the "full in" position. The pedal lever over shadows both the upper and lower inboard fasteners. We did not attempt to put a socket on because the problem was obvious once the pedal was adjusted to this extreme.

Richard Stanton

P131 U137 Int. & ext. trim VO Final Assy.
Phone: 313-845-4791 building: VOGO
Fax: 313-845-3243 cube: f3015
Text pager: 313-813-6894
e-mail: rstanto5@ford.com

From: Evangelista, Elio - Troy [eevangelist@TFXAuto.com]
Sent: Thursday, September 21, 2000 10:40 AM
To: Lisa Petrauskas (E-mail)
Subject: Teller, Bill - Troy; Hudson, Lou - Troy
2001 & 2003 ETC part delivery

Hi Lisa,

- 1) Part delivery for the 2001 & 2003 ETC adjustable pedals were red boarded to 9/27/00. I am working on moving this date up a few days.
- 2) We have redesigned the motor bracket (again) and should have samples early next week to put on a vehicle. Can you arrange for a vehicle for this tryout? We have been unable to rent one.
- 3) Trip to Kentsville - let me know what your schedule is like and what days you prefer and I will verify those days with the plant. Later in the month would be best since by then most of the U137 equipment will be shipping in.

Talk to you soon.
Elio Evangelista
Program Manager
Pedal Systems
Teleflex Automotive

From: Buss, Stephen (S.D.)
Sent: Friday, September 22, 2000 10:46 AM
To: Stanton, Richard (R.A.); Spencer, Jeff (J.); Petrauskas, Lias (L.E.)
cc: Patel, Bharat (B.C.)
Subject: IP End Affecter

Oxbow will be at KTP to review IP end affecter for detail modification. Jim Broad committed to meeting the 10/17 functional build date if all that is needed is a detail change. IF an entire end affecter change is required we will have trouble making the 12/12 4p build. If this is the case we will not build 4p units without the intended assembly process: bottom line: No tool no build. I will keep you posted.

He has the PDGS files plus adjustable pedal parts.

Stephen Buss

Kentucky Truck Plant PVT
Manufacturing Chassis Engineer
Phone: 502-429-2290
Fax: 502-429-2941

From: Teller, Bill - Troy [bteller@txauto.com]
Sent: Tuesday, August 22, 2000 5:17 PM
To: 'petraus@ford.com'
Subject: FW: Memory

Importance: High

See below

William Teller
Engineering Manager
Adjustable Pedal and Pedal Box Engineering
Teleflex Automotive
(248) 616-3843

-----Original Message-----

From: Teller, Bill - Troy
Sent: Tuesday, August 22, 2000 5:13 PM
To: 'petraus@ford.com'
Cc: Evangelista, Ello - Troy
Subject: Memory
Importance: High

Please confirm with the appropriate electrical contact at Ford:

For the memory feature on the adjustable pedal, the control module is looking for an increase in voltage from the pedal position sensor as the pedals adjust rearward in vehicle.

Thanks

William Teller
Engineering Manager
Adjustable Pedal and Pedal Box Engineering
Teleflex Automotive
(248) 616-3843

From: Petrauskas, Lisa (L.E.)
Sent: Thursday, August 24, 2000 11:07 AM
To: 'Teller, Bill - Troy'
Subject: RE: Memory

Bill, I checked with Jerry McDanials, he said that 5V was full reverse & Gnd was full forward according to ESS spec.

Hope this helps.

-----Original Message-----

From: Teller, Bill - Troy [mailto:bteller@tfxauto.com]
Sent: Tuesday, August 22, 2000 5:17 PM
To: 'lpetraus@ford.com'
Subject: FW: Memory
Importance: High

See below

William Teller
Engineering Manager
Adjustable Pedal and Pedal Box Engineering
Teleflex Automotive
(248) 616-3843

-----Original Message-----

From: Teller, Bill - Troy
Sent: Tuesday, August 22, 2000 5:13 PM
To: 'lpetraus@ford.com'
Cc: Evangelista, Elio - Troy
Subject: Memory
Importance: High

Please confirm with the appropriate electrical contact at Ford:

For the memory feature on the adjustable pedal, the control module is looking for an increase in voltage from the pedal position sensor as the pedals adjust rearward in vehicle.

Thanks

William Teller
Engineering Manager
Adjustable Pedal and Pedal Box Engineering
Teleflex Automotive
(248) 616-3843

From: Evangelista, Elio - Troy [eevangelist@tfxauto.com]
Sent: Monday, August 28, 2000 9:01 AM
To: Lisa Petrauskas (E-mail); Douglas Velt (E-mail)
Cc: Phil Beuckelaere (E-mail)
Subject: 2002 U137 Adjustable pedal timeline

Lisa and Doug,

Based on all the recent meeting at Ford and the need to move PPAP to 2/12/01 we have reviewed program timing and have made adjustments so that we can meet this PPAP requirement.

To accomplish this, we will begin PV testing using parts built for the HTFB tryouts (I have added a section in the timeline showing how we plan to meet HTFB MRD) instead of waiting for full PPAP parts. This will allow us to start PV testing at an earlier date thus moving up the PPAP date.

Attached is the latest timeline for your review. If you have any questions, give me a call.

thanks

<<U137_P131_APS_2002_Program_Timeline.mpp>>

Elio Evangelista
Program Manager
Pedal Systems
Teleflex Automotive

From: Evangelista, Elio - Troy [eevangelist@TFXAuto.com]
Sent: Wednesday, October 25, 2000 5:55 PM
To: Lisa Petrauskas (E-mail); Douglas Velt (E-mail); 'mwalsh4@ford.com'
Subject: Adjustable Pedals - U137/P131

Mike,
The guide rod issue on the adjustable pedals has been resolved and arrangements have been agreed upon to ensure that the sub supplier will support this program until the new design can be validated at Ford.

If you have any questions, please give me a call at (248) 818 - 3104

Elio Evangelista
Program Manager
Pedal Systems
Teleflex Automotive

From: Schaefer, Andrew (A.F.)
Sent: Thursday, October 26, 2000 8:42 AM
To: Petrauskas, Lisa (L.E.)
Subject: RE:

Sorry, I was out the last couple days due to a death in the family.
There is definitely a key way to prevent upside down insertion of the switch. If they scratched the I/P by trying to insert the switch upside down...it is a process issue and the ownership of the issue falls with VO. Hope this helps.

-----Original Appointment-----

From: Rahman, Nayeema (N.) On Behalf OF Petrauskas, Lisa (L.E.)
Sent: Tuesday, October 24, 2000 4:06 PM
To: Schaefer, Andrew (A.F.); Petrauskas, Lisa (L.E.)
Subject: FW:
When: Wednesday, October 25, 2000 11:00 AM-12:00 PM (GMT-05:00) Eastern Time (US & Canada).
Where: Adj. pedal meeting

Andrew:

Please attend this meeting tomorrow from 11:00am to 12:00pm @ PDC 2J-L59. We had a trial @ KTP on 10/17/00 where one of the issues was scratched IP when operator tried to install adj. pedal switch upside-down. Is it related to keyway?

-----Original Appointment-----

From: Petrauskas, Lisa (L.E.)
Sent: Tuesday, October 24, 2000 2:00 PM
To: Petrauskas, Lisa (L.E.); PDC Conf Rm 2J-L59 (17); Avtar Kaler (E-mail); Bauckobiers, Philip (P.A.); Bosko, James (J.G.); Busa, Stephen (S.D.); Chevis, Cory (C.J.); Clanton, Mozell (M.J.); Davis, Chris (C.); Elo G. Evangelista (E-mail); Gilpin, Leary (L.W.); Hoes, Jerry (G.E.); Janience Mays (E-mail); Joe Ravencroft (E-mail); Kobus, Jack (J.M.); Lillian McLean (E-mail); Lou F. Hudson (E-mail); McLaughlin, Pat (P.L.); Montes, Jhannel (J.); Nation II, David (D.G.); Osborn, Mark (M.A.); Patel, Tej (.); Rahman, Nayeema (N.); Rank, John (J.A.); Reed, Bill (B.P.); Roberts, George (G.); Schaefer, Andrew (A.F.); Stanton, Richard (R.A.); Velt, Douglas (D.W.); Walsh, Michael (M.D.); Weathers, Ryan (R.M.); William Taylor (E-mail); Willer, Kevin (K.D.)
Subject: Updated:
When: Wednesday, October 25, 2000 11:00 AM-12:00 PM (GMT-05:00) Eastern Time (US & Canada).
Where: Adj. pedal meeting

Note time & room change.

Discuss issues from mini-trial at KTP.

From: Hudson, Lou - Troy [ludson@TFXAuto.com]
Sent: Tuesday, October 31, 2000 2:28 PM
To: 'Lisa Petrauskas (E-mail)'; 'Phil Beuckelaere (E-mail)'
Cc: Teller, Bill - Troy; Evangelista, Ello - Troy
Subject: Dropped Parts

Lisa and Phil,

When I left PDC this morning I placed a call to Bill Kirkland, Kendallville's quality manager, requesting any info he had on complaints, rejects, etc., on adjustable pedals dropped at various Ford assembly plants.

He told me that while he can't say plants "aren't" dropping parts, he had no knowledge of any such problems. Kendallville has not received any parts rejected because they were dropped.

Regards,
Lou

From: Tetlow, Nicholas (N.)
Sent: Tuesday, November 28, 2000 8:35 AM
To: Petrauskas, Lisa (L.E.)
Subject: Throttle return

Lisa,

I am working on the final report and need the following information for both vehicles:

ACCELERATOR CONTROLS PARTS LIST: [REDACTED]

For gas truck

[REDACTED]

ACCELERATOR CONTROLS PARTS LIST: [REDACTED]

For Diesel Truck

[REDACTED]

Both vehicles passed the test and can be certified.

Nicholas Tetlow
JPG
Phone (313)322-9860

From: Howell, Joseph (.)
Sent: Wednesday, December 06, 2000 3:02 PM
To: Petrauskas, Lisa (L.E.); Stockman, Michael (M.G.)
Co: Mosakoski, Brian (B.W.)
Subject: Adj. Pedals on Excursion @ Carron

Importance: High

All,

Due to the Management Drive occurring next week and the lack of time to support the wiring changes with the Excursion at Carron I instructed Brian Mosakoski to install manual adjustable pedals on this vehicle. Again, as discussed with Lisa on the morning of 12/6/00 the memory adjustable system was not available at this time, but had been ordered. Due to the drive occurring next week I felt it would be too big of a risk to await for the memory system to be delivered, and would also be too big of a risk for AFL to support wiring changes on such a tight time frame. These are the reasons the manual system was supported. As of 2:00 pm on 12/6/00 the manual adjustable system had been installed and completed. I personally checked the system and it DOES function correctly.

Thanks,

Joe Howell

*World's biggest Earnhardt Fan
2002 P131/U137 Program
313-323-2759*

From: Tetlow, Nicholas (N.)
Sent: Tuesday, December 12, 2000 2:30 PM
To: Petrauskas, Lisa (L.E.)
Subject: RE: Throttle return

Lisa,

I all need is your signature to finish the report. Can you send me a meeting notice, or stop by my office when we can meet?

—Original Message—

From: Petrauskas, Lisa (L.E.)
Sent: Monday, December 11, 2000 8:57 AM
To: Tetlow, Nicholas (N.)
Subject: RE: Throttle return

Nick,
Here are the part numbers. The engineer for speed control cable is not in work yet.

—Original Message—

From: Tetlow, Nicholas (N.)
Sent: Tuesday, November 28, 2000 8:35 AM
To: Petrauskas, Lisa (L.E.)
Subject: Throttle return

Lisa,

I am working on the final report and need the following information for both vehicles:

ACCELERATOR CONTROLS PARTS LIST: [REDACTED]

For gas truck

[REDACTED]

ACCELERATOR CONTROLS PARTS LIST: [REDACTED]

For Diesel Truck

[REDACTED]

Both vehicles passed the test and can be certified.

Nicholas Tetlow
DPG
Phone (313)322-9869

From: Mundroff, Robert - Kendallville (RMundroff@TFXAuto.com)
Sent: Tuesday, March 13, 2001 8:08 AM
To: 'petrus@ford.com'
Subject: RE: Terms of Adjustable pedal parts

Sorry the picture was embedded & not attached, I forgot the Ford virus scan strips these off

Try this:

<<Pic of parts.doc>>

Sorry.

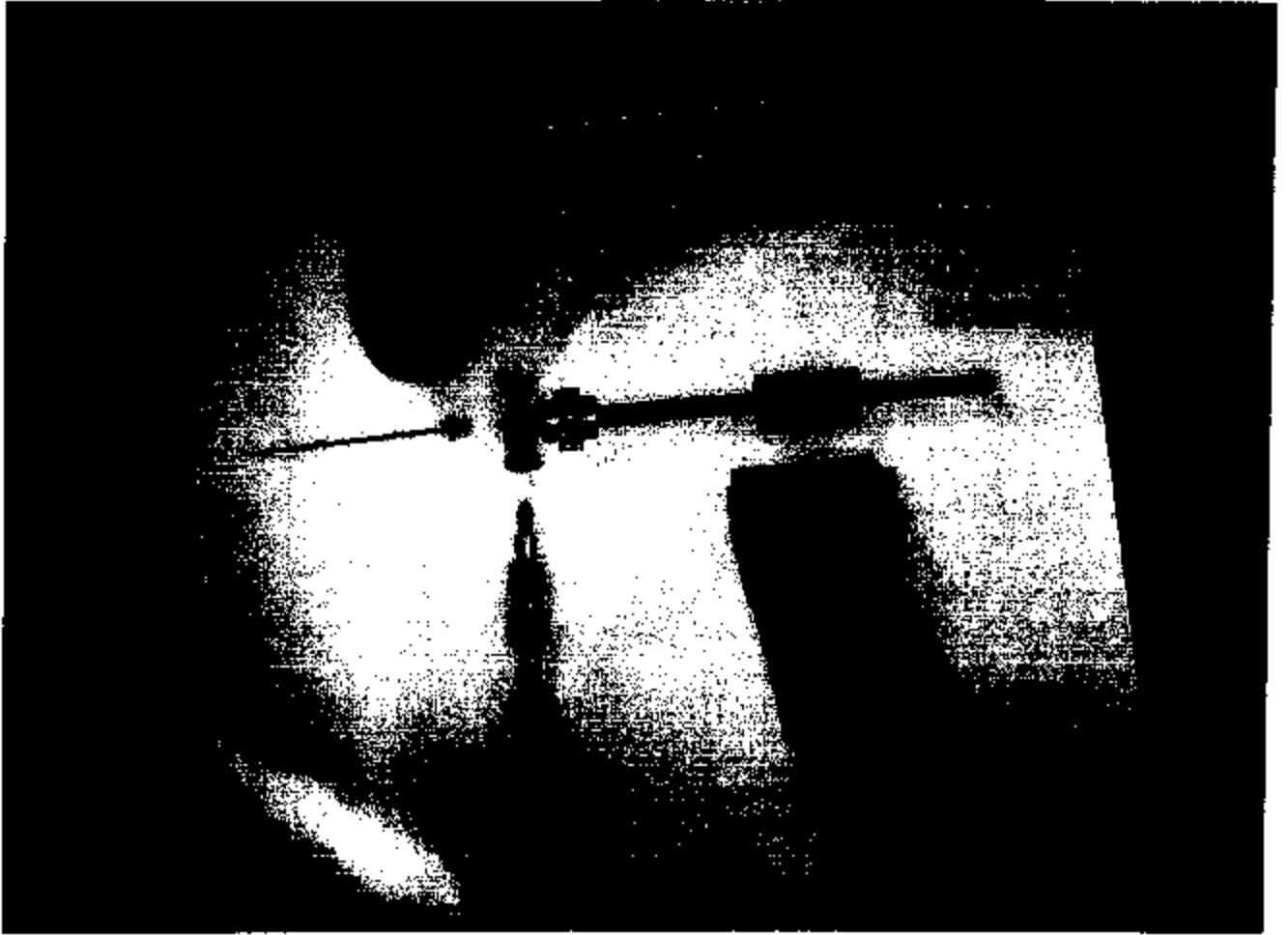
If you need any thing else let me know

Rob

—Original Message—

From: Mundroff, Robert - Kendallville
Sent: Monday, March 12, 2001 2:54 PM
To: 'petrus@ford.com'
Subject: Terms of Adjustable pedal parts

<<OLE Object: Picture (Metafile) >>



From: Beuckelaere, Phillip (P.R.)
Sent: Monday, April 02, 2001 1:37 PM
To: Pullala, Ananth (A.)
cc: Walsh, Thomas (T.J.); Johnson, David (D.M.); Weems, Joe (J.J.); Chavis, Cory (C.J.); Petruskas, Lisa (L.E.)
Subject: RE: Adjustable Pedal Eng. support at KTP the week of 4/2/01...

Lisa will be back at KTP Wednesday thru Fri this week.

Phillip R. Beuckelaere
Super Duty/Excursion OPD
(313) 317-2345
pbeuckel@ford.com

-----Original Message-----

From: Pullala, Ananth (A.)
Sent: Monday, April 02, 2001 10:32 AM
To: Beuckelaere, Phillip (P.R.)
Cc: Walsh, Thomas (T.J.); Johnson, David (D.M.); Weems, Joe (J.J.); Chavis, Cory (C.J.)
Subject: Adjustable Pedal Eng. support at KTP the week of 4/2/01...
Importance: High

Phil,
Lisa said she will not be at KTP this week. I am certain that you realize we have several outstanding issues with adjustable pedals and we need engineer's presence to have those resolved. AIMS issues on pedals have been open and we have not been making much progress with them. Please help us and send engineer to KTP to work with VO Final engineer and put these issues to bed. Please confirm that she is going to be at KTP from Tuesday since a trial has been planned tomorrow by VO Final engineer.

Regards,
Ananth Pullala
Super Duty F-Series
OPD Launch and Vehicle Engineering
313-24-81605

From: Beuckelaere, Phillip (P.R.)
Sent: Thursday, April 26, 2001 10:43 AM
To: Bill Teller (E-mail); Carlos Da Silva (E-mail); Elio Evangelista (E-mail)
Cc: Petrauskas, Lisa (L.E.); Skwirsk, Tom (T.V.)
Subject: FW: Teleflex FEU support

The Teleflex representative needs to be one who is knowledgeable of the pedal design and program status and must be on site continuously until the build is complete and all issues are resolved. Please respond to Lisa by noon tomorrow.

Phillip R. Beuckelaere
Super Duty/Excursion OPD
(313) 317-2345
pbeuckel@ford.com

-----Original Message-----

From: Petrauskas, Lisa (L.E.)
Sent: Thursday, April 26, 2001 8:52 AM
To: Elio G. Evangelista (E-mail); William Teller (E-mail); Gregory M. Braniff (E-mail)
Cc: Skwirsk, Tom (T.V.); Beuckelaere, Phillip (P.R.)
Subject: Teleflex FEU support

Elio -
Who, from Teleflex, will be supporting the FEU build at KTP.
Please let me know ASAP.
Build starts at KTP Monday evening at 4:00pm.

Thanks

Lisa Petrauskas
Heavy F-Series Chassis Design
PDC 2B-A60
313-39-08070
(fax) 313-317-2349
lpetraus@ford.com