

Ferrari North America, Inc.

01-022-N11B-10628

3 pgs.

April 25, 2005



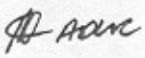
Dr. Jeffrey W. Runge, Administrator
National Highway Traffic Safety Administration
400 Seventh Street, SW.
Washington, DC 20590

Attention: VIN Coordinator.

Subject: Ferrari MY 2005 612 Scaglietti Updated VIN Decoder

Pursuant to Part 565, Section 565.7(c) Ferrari North America, Inc. is submitting the updated MY 2005 VIN identifier to NHTSA. If you have any question, I can be reached at (201) 816-3232 or e-mail: adelarosa@ferrariusa.com. Please see enclosed documents.

Best regards,

Arthur DeLaRosa 

Arthur DeLaRosa
Ferrari North America, Inc.
Certification & Compliance Engineer

GRUPPO
FERRARI
MASERATI

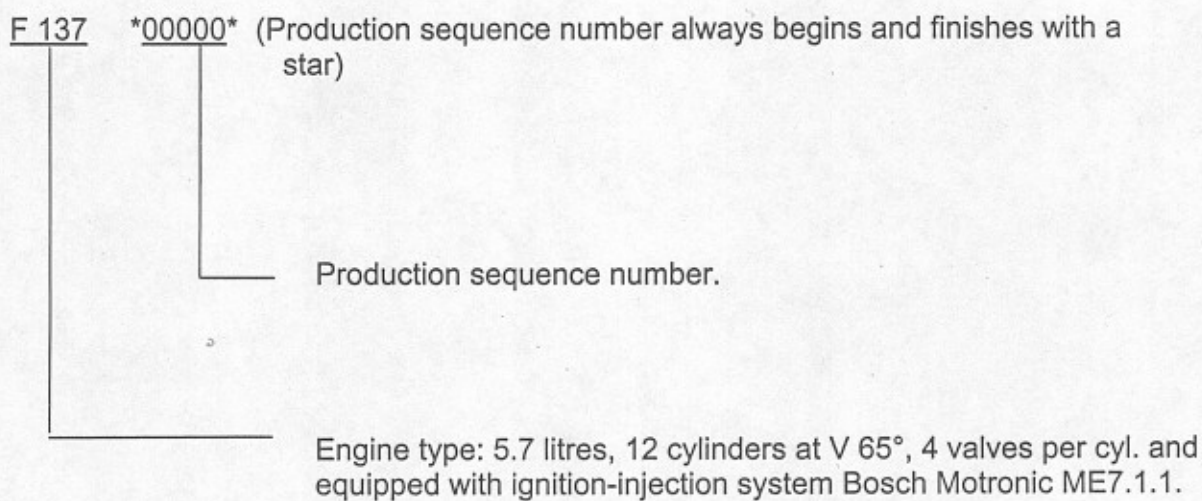
Ferrari North America, Inc.
250 Sylvan Avenue
Englewood Cliffs, NJ 07632
tel 201 816 2600
fax 201 816 2626



Ferrari



FERRARI Engine Type Explanation For Model 612 Scaglietti



Ferrari spa
Direzione e stabilimento
via Abetone Inf. 4
I-41053 Maranello (MO)
tel +39 0536.949111
www.ferrariworld.com

Sede sociale
via Emilia est 1163
P.O. Box 589
I-41100 Modena

Capitale sociale
€ 20.000.000
Tribunale di Modena
n. 3658

Cod. fisc. e part. iva
00159560366
CCIAA n. 88683



FERRARI V.I.N. Coding System Explanation For Model 612 Scaglietti for 2005 model year

* Z F F A A 54 A * 5 0 000000 * (V.I.N. always begins and finishes with a star)
1 2 3 4 5 6 7 8 9

1. Manufacturer Identification assigned by CUNA (FERRARI)
2. Engine Type (A = F 137)
3. Restraint System (A = three point seat belts with pretensioners for front and rear seats, air bag for driver and passenger and Lower Anchorage and Tether for Children (LATCH) system for rear seats).
4. Model Type (54 = 612 Scaglietti)
5. Designation (A = USA and Canada versions)
6. Check digit (only for USA and Canada; 0 for other versions)
7. Model Year (only for USA, Canada and related versions; 5 for 2005 Model Year)
8. Plant of Manufacture (Maranello)
9. Production sequence number