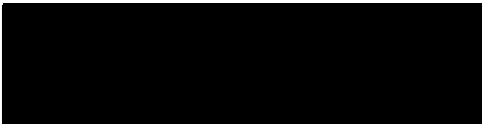


CL-103964(12-4483) NVS-200



APR 1 2 2011

BREWSTER, MA



201 APR 11 A 10:36

RECEIVED - NHTSA

April 4, 2011

Administrator NHTSA
1200 New Jersey Ave SE
Washington, DC 20590

Gentlemen,

I wish to bring a safety hazard to your attention on the 2011 Toyota Avalon. I have the model with a sunshade and the switch is next to the trunk opener switch. See enclosed page from manual. I was driving a couple of weeks ago as the sun was setting and wished to lower the sunshade but by accident I hit the trunk opener while going about 60 miles an hour. The lid of the trunk opened and I had to go over to the shoulder immediately to close it. Why is the trunk opener active when the car is in gear or moving?

If I had loose or lightweight items in the trunk, they would have fallen out and been a danger to the cars behind me.



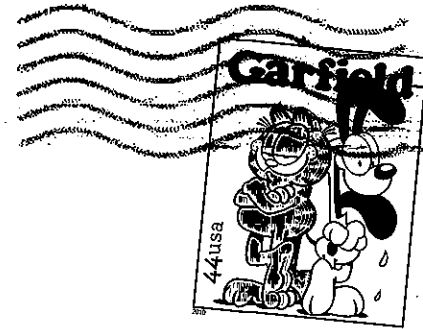
CC: Toyota Motor Sales, USA, Inc.
19001 S. Western Avenue
Torrance, CA 90501

NAM
04134
TW

[Redacted]
Brewster, MA

BROCKTON MA 023

05 APR 2011 PM 1 T



ADMINISTRATOR NHTSA
1200 NEW JERSEY AVE SE
WASHINGTON, DC 20590

